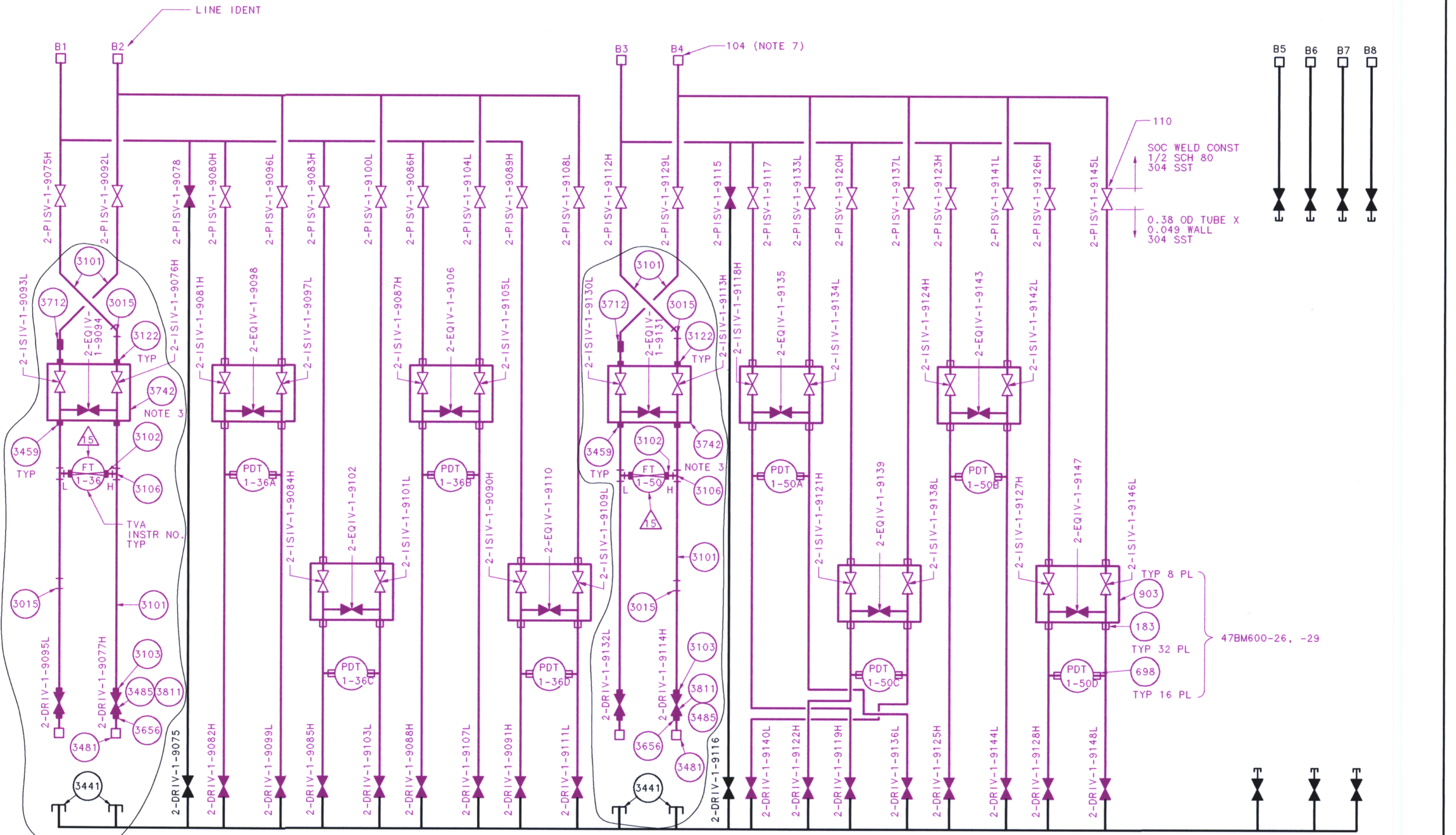


TITLE:ARRGT
RACK 25-56B
 FIRST MADE FOR BROWNS FERRY UNIT 2 (MAIN STM FLOW)
 PURCHASED PART DRAWING



PIPING DIAGRAM-SECTION B

- NOTES:
1. ISI SUFFIX FROM REFERENCE CONTINUATION DRAWING HAS BEEN OMITTED, AS APPLICABLE.
 2. THE ISI CODE CLASS DRAWING DOES NOT NECESSARILY REPRESENT THE ACTUAL CONFIGURATION.
 3. THE VALVE MANIFOLD IS LOCATED ABOVE OR BELOW TRANSMITTER AS CLOSE AS POSSIBLE (NOT MORE THAN 8" FROM CENTERLINE OF VALVE TO BOTTOM OF TRANSMITTER).

FOR ASME SECTION XI
 USE ONLY

■ -ASME CODE CLASS 1 EQUIVALENT
 ■ -NON NUCLEAR CODE CLASS

ISI DRAWING WAS ISSUED FOR
 BASELINE DWG: 2-164C5984-5
 REV: 001

PROJECT BFNP DISCIPLINE ELEC
 CONTRACT 90744 UNIT 2
 DESC. RACK 25-56B
 DWG/DOC NO. 2-164C5984-5-ISI
 SHEET OF REV 001
 DATE ECN/FCR FILE

SYS NO.	001	DCN W25841	KED	N/A	N/A	N/A	N/A	N/A	N/A		
	000	REVISED LINES B1, B2, B3, B4 AND ADDED NOTE 3 PER DCN W25841 (REFERENCE DCA W25841-052-002); DOCUMENTED DCA W25841-053-000, DCN W25841									
REV NO.	000	ISI	10-30-94	MPT	JK	N/A	JTL	FWF	RDC	AEC	HLW/C
REV NO.	000	REVISED TO UPDATE ISI BOUNDARY TO MATCH CURRENT CONFIGURATION, SUPERSEDES 164C5984-ISI R001									
REV NO.	000	CHANGE REF	DATE	DFTR	CHKR	DSGN	RVWR	APPD	APPD	APPD	ISSD
REVISIONS BY TVA											
MADE BY	JJM DAVALLE	APPROVALS	W.F. HOOVER	DESIGN	SAN JOSE, CALIF.	LOCATION	2-164C5984-5-ISI				
ISSUED	W. DOMINGO	THIS DRAWING IS UNDER CONFIGURATION CONTROL									
											CCD

D-6