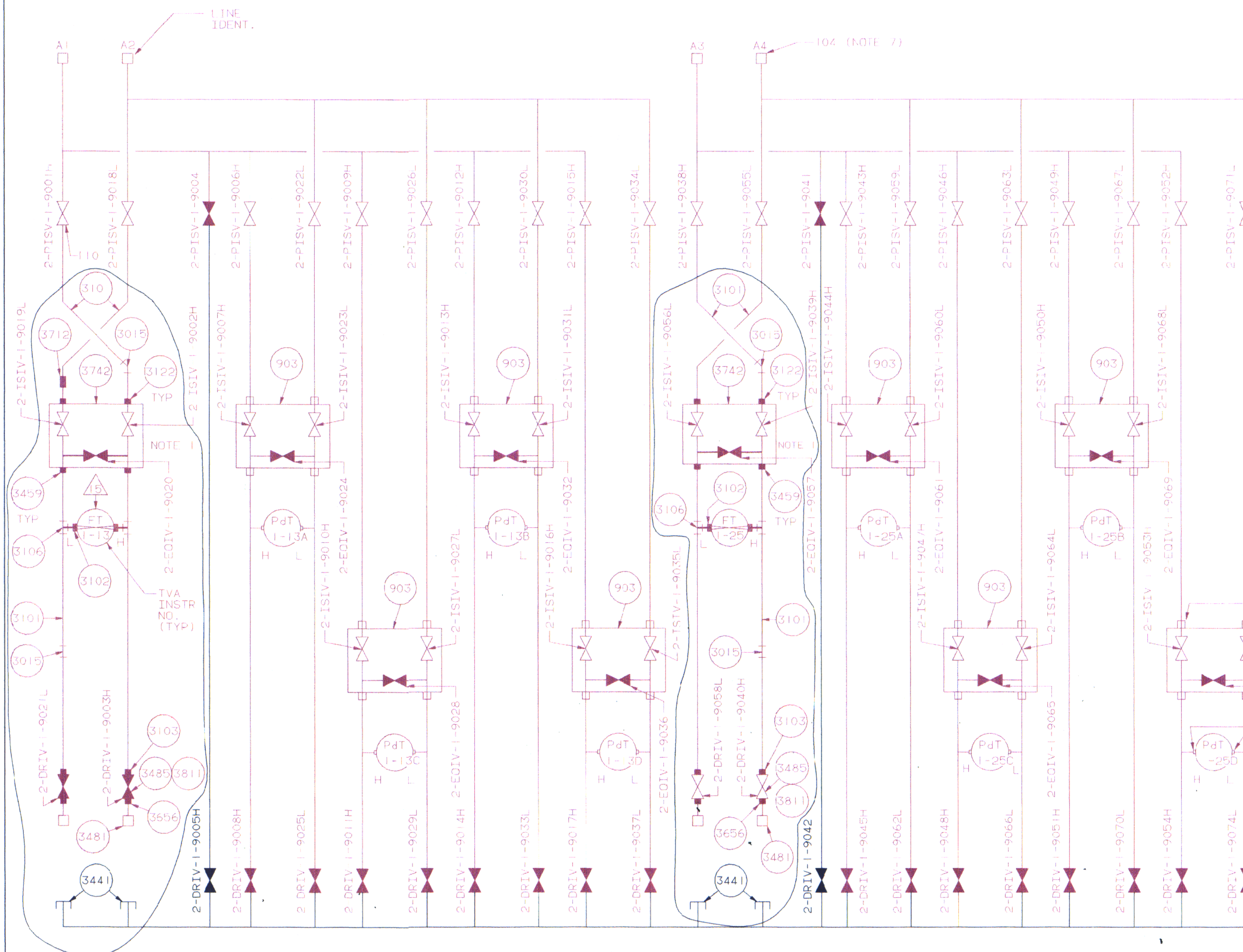


TITLE ARRG
RACK 25-56A
FIRST MADE FOR BROWNS FERRY UNIT 2 (MAIN STEAM FLOW)
PURCHASED PART DWG



1/2 SCH 80, 304
SIN ST, 304
WELD CONST
0.38 OJ TUBE
X .049 WALL
304 STN ST

NOTE:
1. THE VALVE MANIFOLD IS LOCATED ABOVE
OR BELOW TRANSMITTER AS CLOSE AS
POSSIBLE (NOT MORE THAN 8" FROM
CENTERLINE OF VALVE) TO BOTTOM OF
TRANSMITTER.

PIPING DIAGRAM-SECTION A

FOR ASME SECTION XI
USE ONLY



1445644612
BFPD DRAWINGS
CC 2-164C5984-4
ISI 090744
090396 001

■ -ASME CODE CLASS I EQUIVALENT
■ -NON NUCLEAR CODE CLASS

ISI DRAWING WAS ISSUED FOR
BASELINE DWG 2-164C5984-4
REV 002
PROJECT BFPD DISCIPLINE ELEC
CONTRACT 99744 UNIT 2
DESC ARRG-RACK 25-56A
DWG/DOC NO 2-164C5984-4-ISI

DCN W25841	7-3-94	KED	JK	N/A	RCD	N/A	N/A	N/A	HLB	
001	REVISED PIPING FOR FT-1-13, -25 AND ADDED NOTE 1 TO MEET THE INTENT OF DCA W25841-050-002, DCA F38424, F39631, DCA W25841, DOCUMENTED DCA W25841-051-C00 DCA W25841									
000	ISI	10-30-94	BDB	JK	N/A	JTL	FWF	RDC/R	HEC	JRR/C
000	REVISED TO UPDATE ISI BOUNDARY TO MATCH CURRENT CONFIGURATION									
REV NO	CHANGE REF	DATE	DFTR	CHKR	DSGN	RYMR	APPD	APPD	APPD	ISSD
MADE BY		APPROVALS		DIV OR DEPT		REVISONS BY TVA				
ISSUED		W W HOOPER		SAN JOSE, CALIF LOCATION		2-164C5984-4-ISI				

D-5