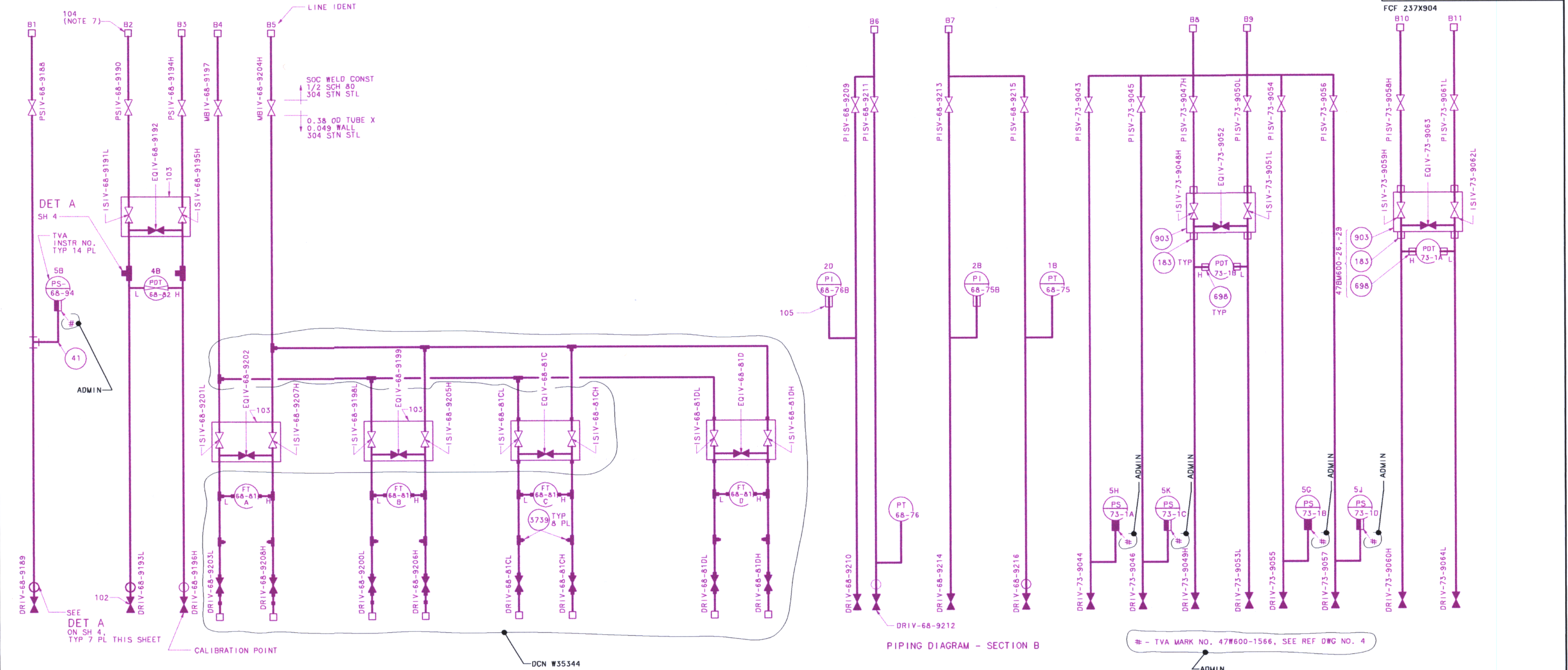


TITLE: ARRCT RACK 25-7
FIRST MADE FOR BROWN FERRY UNIT 2, (REC'D 5/53)
PURCHASED PART DRAWING
FCF 237X904



NOTE:
 1. UNITS ON DRAWINGS ARE FOR REFERENCE ONLY AND ARE ABBREVIATED AS SHOWN IN THE EXAMPLE TO MEET SPACE CONSTRAINTS. REFER TO EMS FOR COMPLETE UNITS. ALL UNITS ARE IN UNIT 2 UNLESS OTHERWISE NOTED. LEADING ZEROS SHOWN IN EMS AS PART OF THE UNIT ARE NOT DEPICTED. FOR ADDITIONAL GUIDANCE, REFER TO BFEF PI 86-28.
 EXAMPLE: EMS UNIT BFN-0-SHV-018-0502 DRAWING UNIT SHV-18-502
 BFN-1-HS-031-0160A HS-31-160A
 BFN-2-PT-003-0204C PT-3-204C
 2. ISI SUFFIX FROM REFERENCE CONTINUATION DWG HAS BEEN OMITTED, AS APPLICABLE.
 3. THE ISI CODE CLASS DRAWING DOES NOT NECESSARILY REPRESENT THE ACTUAL CONFIGURATION.

FOR ASME SECTION XI USE ONLY

-ASME CODE CLASS 1 EQUIVALENT
 -NON NUCLEAR CODE CLASS

ISI DRAWING WAS ISSUED FOR BASELINE DWG: 2-164C5981-5 REV: 005		STS NO: 68,73	001 ADMIN/DCN W35344	VEM			
PROJECT: BFN-018-0502		CONTRACT: 80744		DISC: ARRCT RACK 25-7		DWG/DOC NO: 2-164C5981-5	
SHEET: ISI OF: REV: 001		DATE: CON/FOR: FILE:		REV: CHANGE REF: PREPARER: CHECKER: APPROVED: DATE:		REVISIONS BY TVA: MAKE BY: G. SANCZUK APPROVALS: P.A. HOWER	
				THIS DRAWING IS UNDER CONFIGURATION CONTROL		2-164C5981-5-IS1 CCD	

D-4