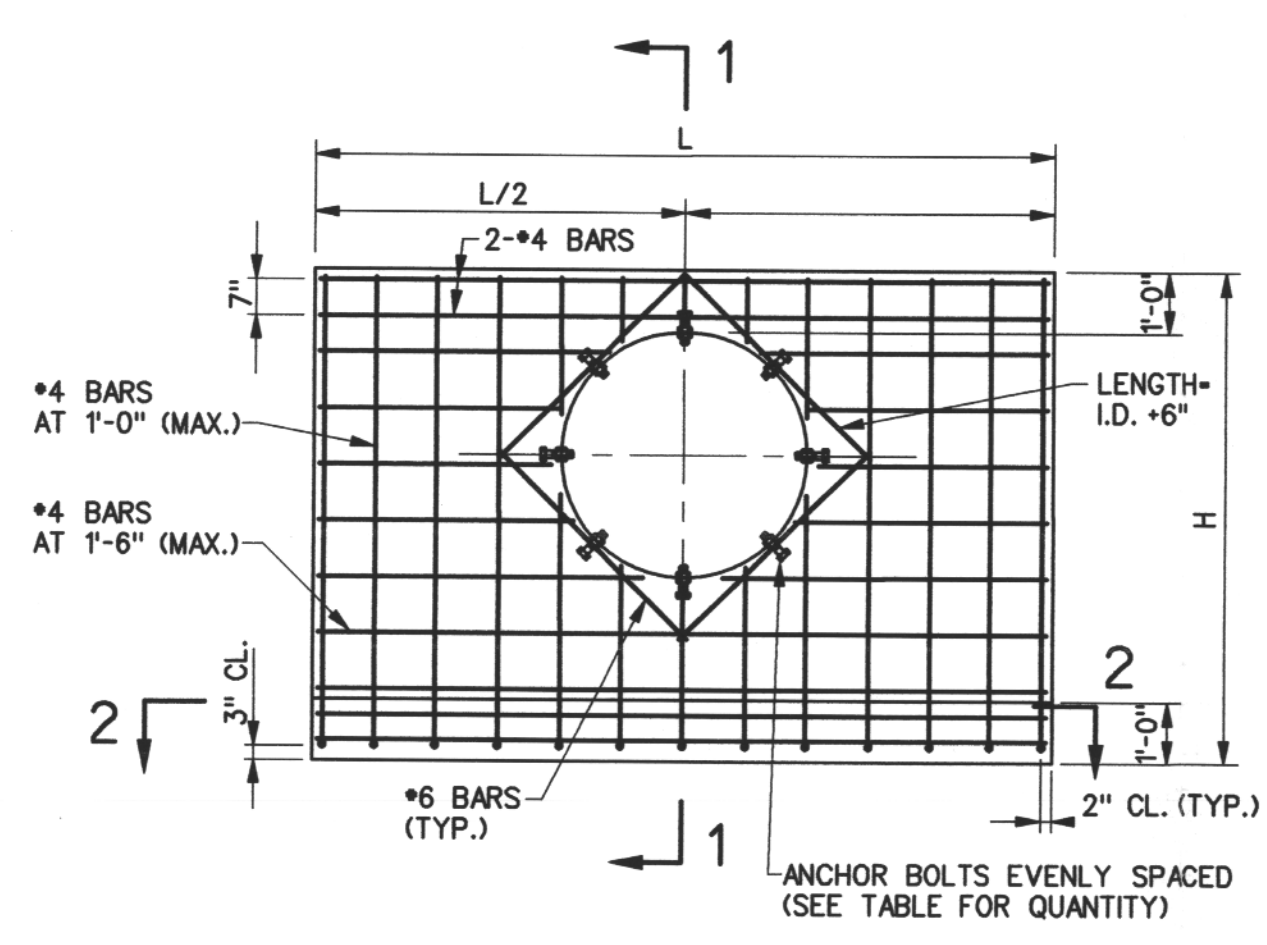
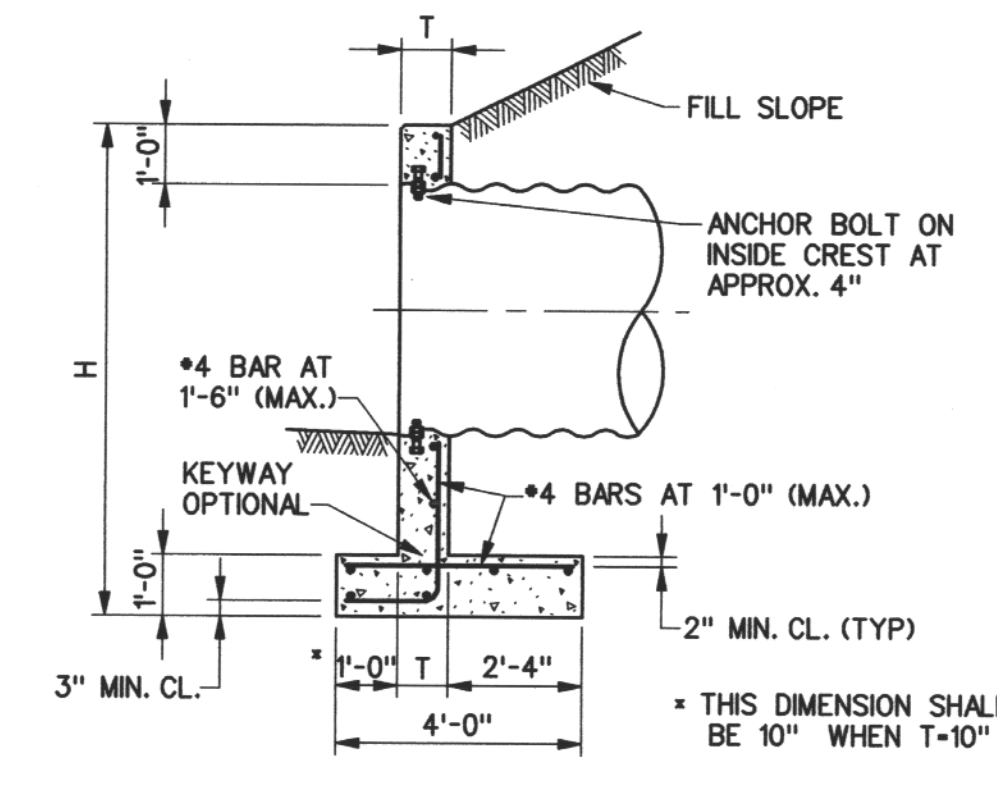


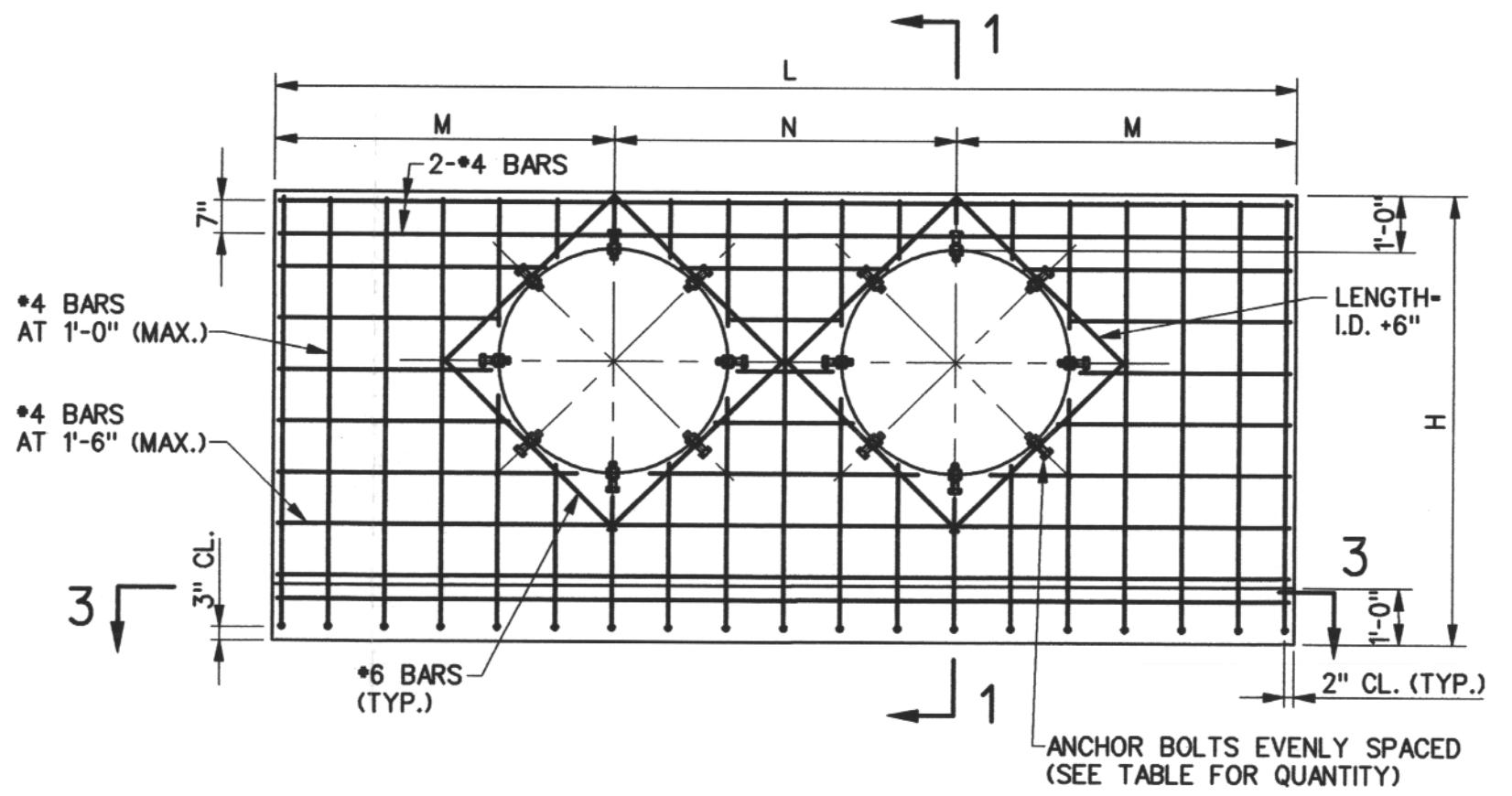
05996-DY-50



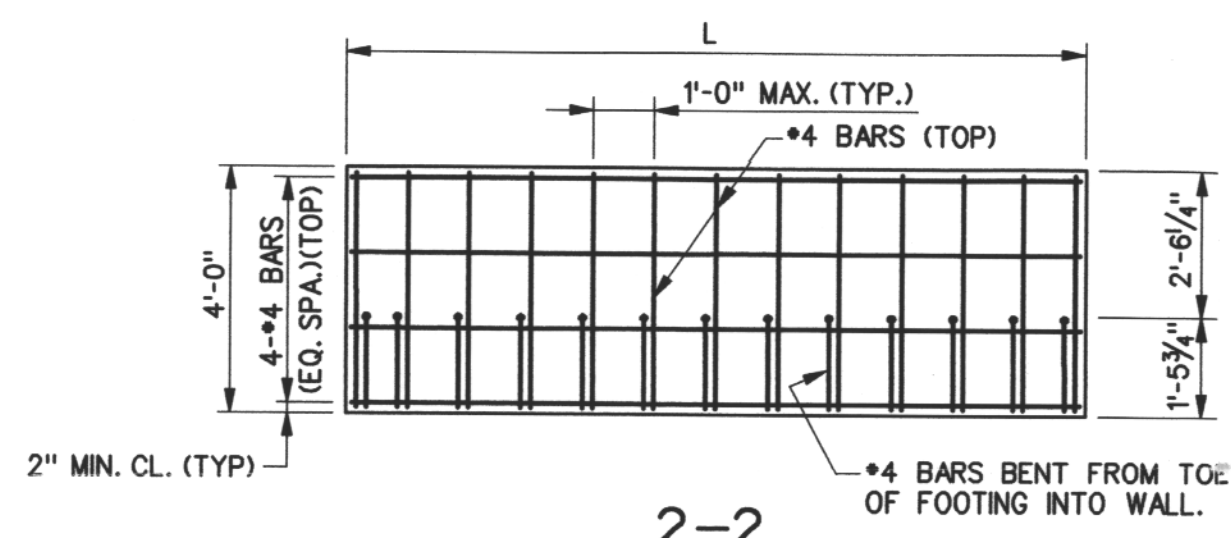
SINGLE INSTALLATION
END SECTION TYPE II



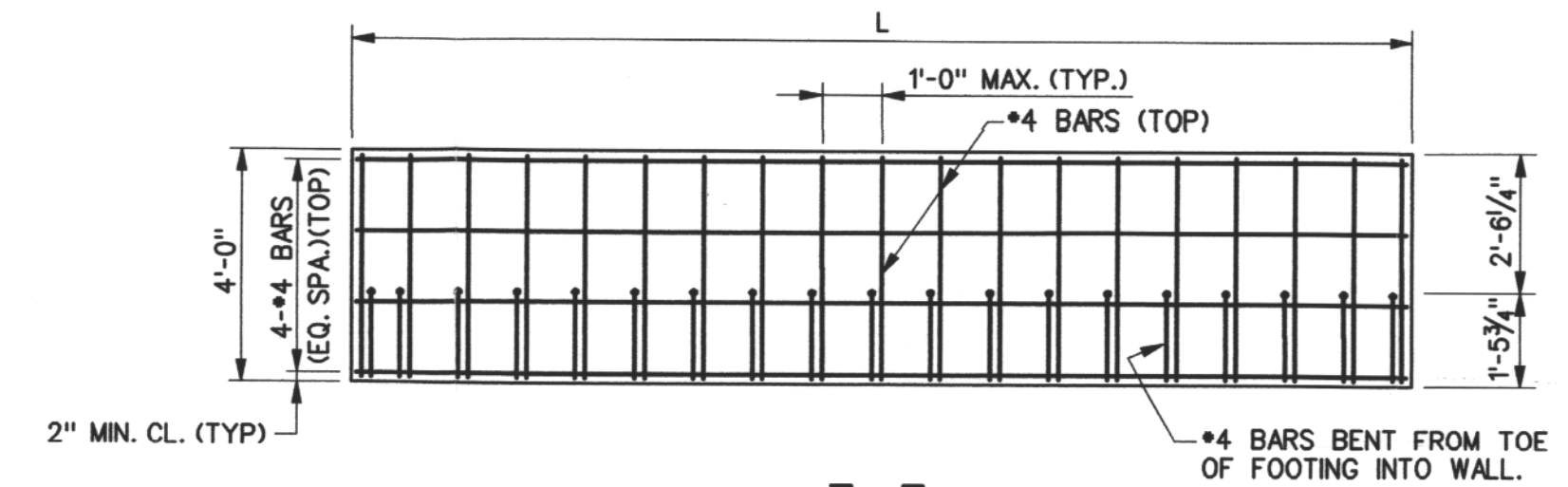
1-1



MULTIPLE INSTALLATION
END SECTION TYPE III



2-2
(FOOTING DETAIL)



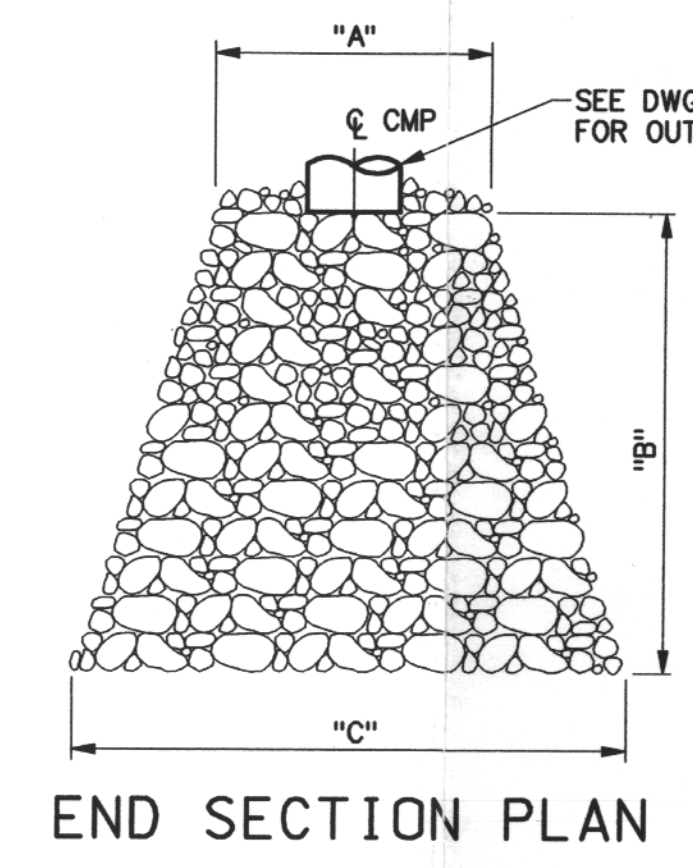
3-3
(FOOTING DETAIL)

SINGLE INSTALLATION

INSIDE DIA. (INCHES)	H (FEET)	L (FEET)	NUMBER ANCHOR BOLTS	T (INCHES)
36	6.5	9.0	5	8
48	8.0	12.0	8	10

MULTIPLE INSTALLATION

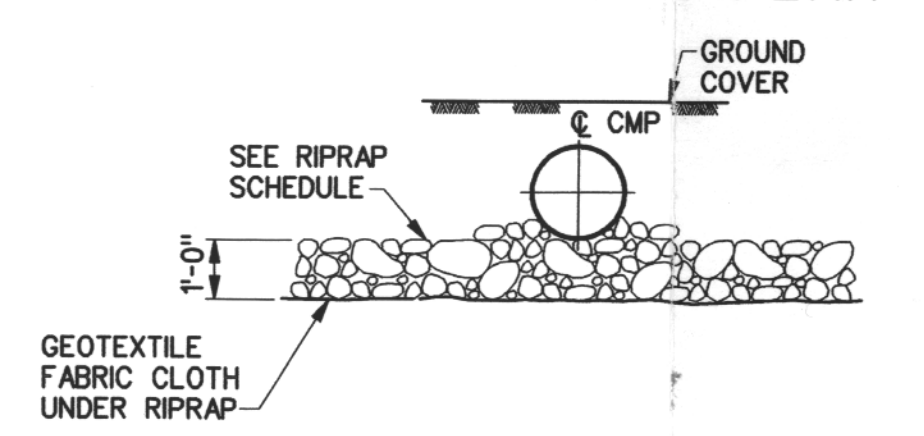
INSIDE DIA. (INCHES)	H (FEET)	L (FEET)	M (FEET)	N (FEET)	NUMBER ANCHOR BOLTS	T (INCHES)
36	6.5	14.0	4.5	5.0	10	8
48	8.0	18.0	6.0	6.0	16	10



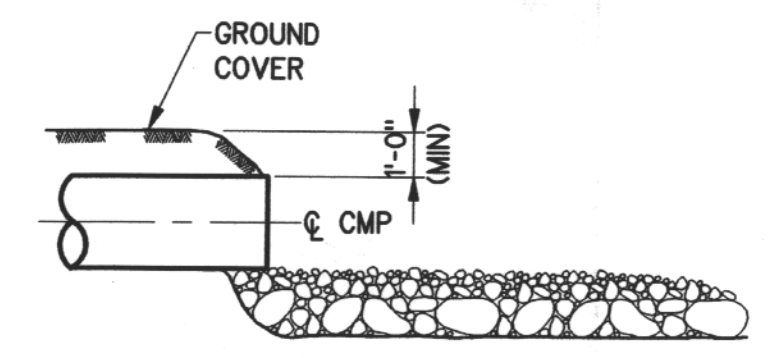
END SECTION PLAN

RIPRAP SCHEDULE

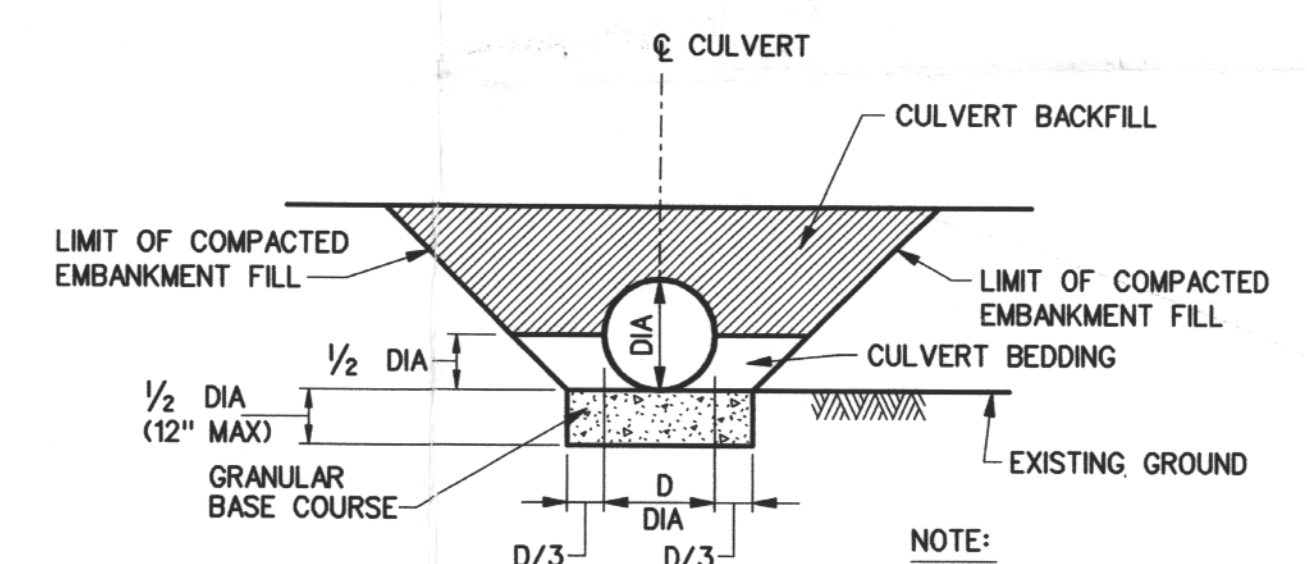
CULVERT STA.	RIPRAP SIZE	A	B	C	D
TO BE DETERMINED UPON FINAL DESIGN					



END SECTION ELEVATION

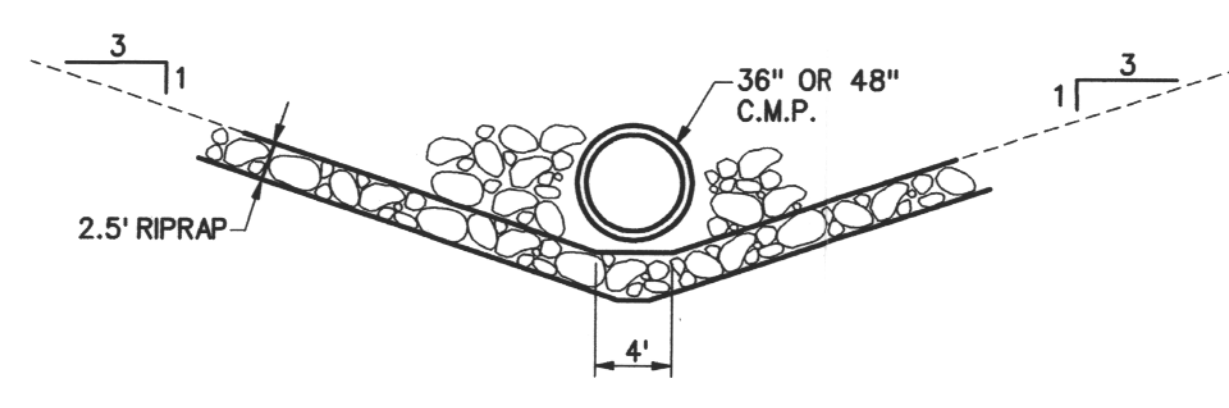


END SECTION

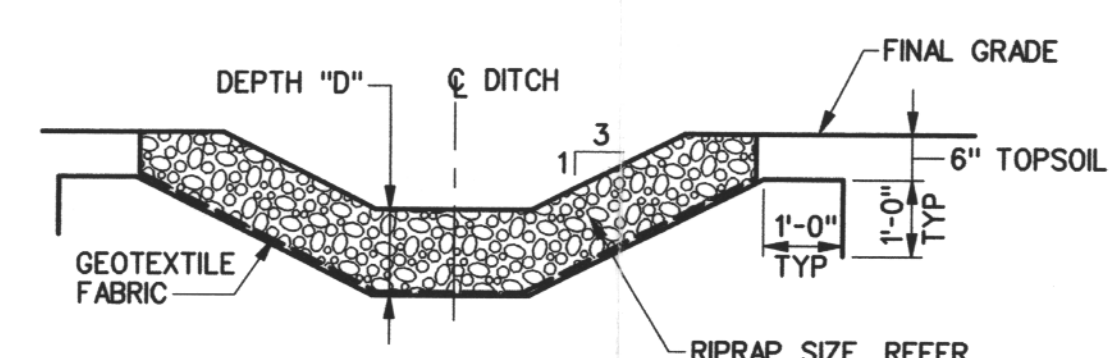


CIRCULAR CULVERT BEDDING DETAIL

NOTE:
DISTANCE FOR MULTIPLE PIPES:
MINIMUM 2.0' BETWEEN PIPES



INLET & OUTLET SECTION CULVERT
N.T.S.



CULVERT OUTLET SECTION
N.T.S.

9909230173

APERTURE CARD

- NOTES:
- EMBANKMENT FILL IN THIS AREA SHALL CONSIST OF SOIL TYPES: GW-GC, GP-GC, GC, SW-SG, SP-SC, SC AND CL.
 - TOP 3'-0" OF EMBANKMENT FILL SHALL BE COMPACTED TO 100% STD PROCTOR. FILL MATERIAL SHALL BE CLAYEY SOILS WITH A PLASTICITY INDEX BETWEEN 5 AND 20.
 - EMBANKMENT FILL IN THIS AREA SHALL CONSIST OF SOIL TYPES: GW, GP, GW-GM, GW-GC, GP-GC, GM, GC, SW, SP, SP-SM, SW-SC, SP-SM, SP-SC, SM, SC, CL, ML AND CH; COMPACTED TO AT LEAST 95% OF MAX. DENSITY BASED ON ASTM D 698.

Docket # 72-22
Accession # 8009230173
Date 5/21/99 of 13
Regulatory Docket File

PFSF RAILROAD LINE
CULVERT SECTIONS
AND DETAILS SHEET 2
PRIVATE FUEL STORAGE FACILITY
PRIVATE FUEL STORAGE, LLC
STONE & WEBSTER ENGINEERING CORPORATION
DENVER, COLORADO
DRAWING NUMBER 05996-DY-50-A

REVISION	DESCRIPTION	BY	CHKD	DATE	REVISION	DESCRIPTION	BY	CHKD	DATE	REVISION	DESCRIPTION	BY	CHKD	DATE	REVISION	DESCRIPTION	BY	CHKD	DATE	REVISION	DESCRIPTION	BY	CHKD	DATE	

9909230173

D-21