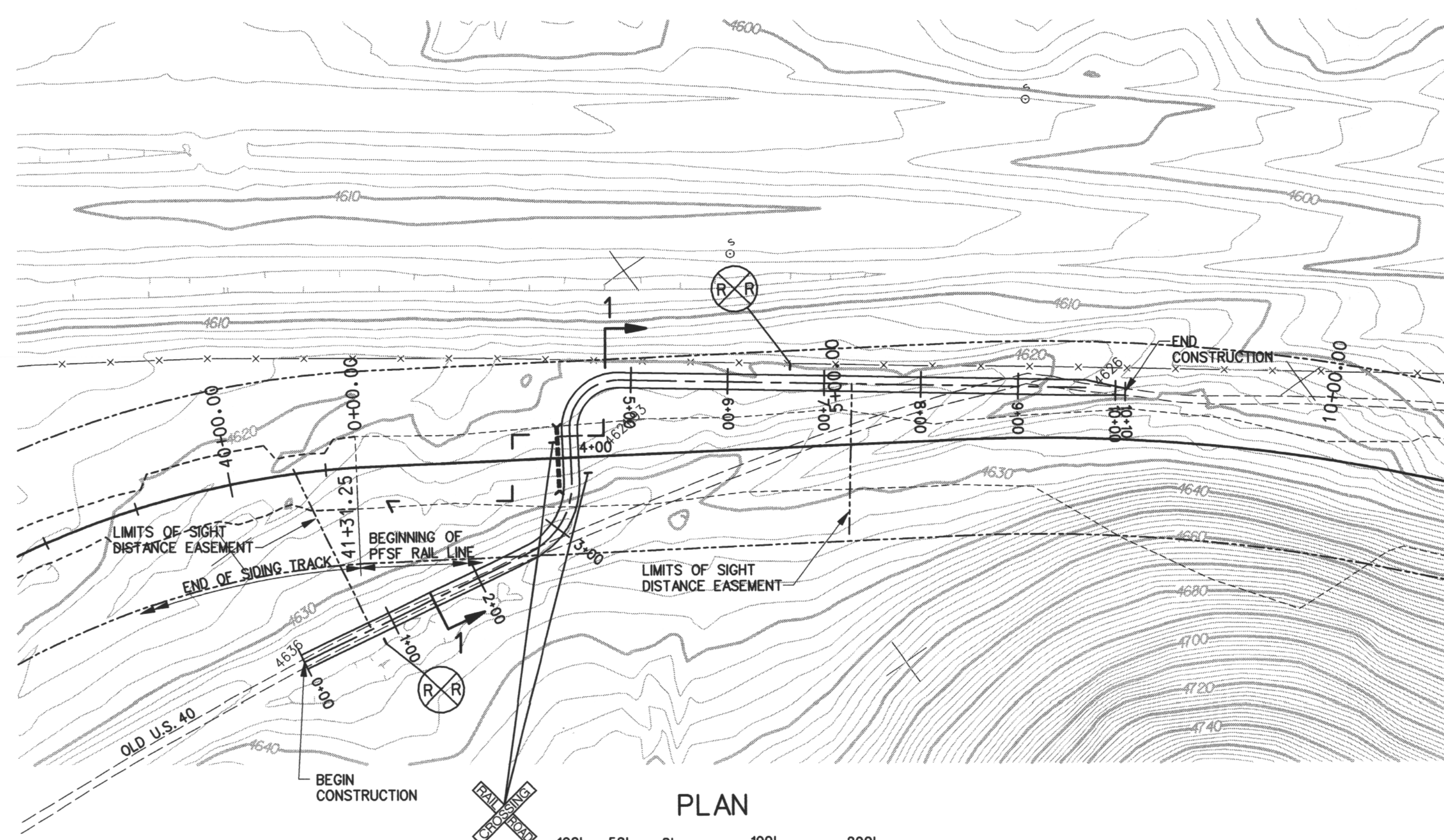
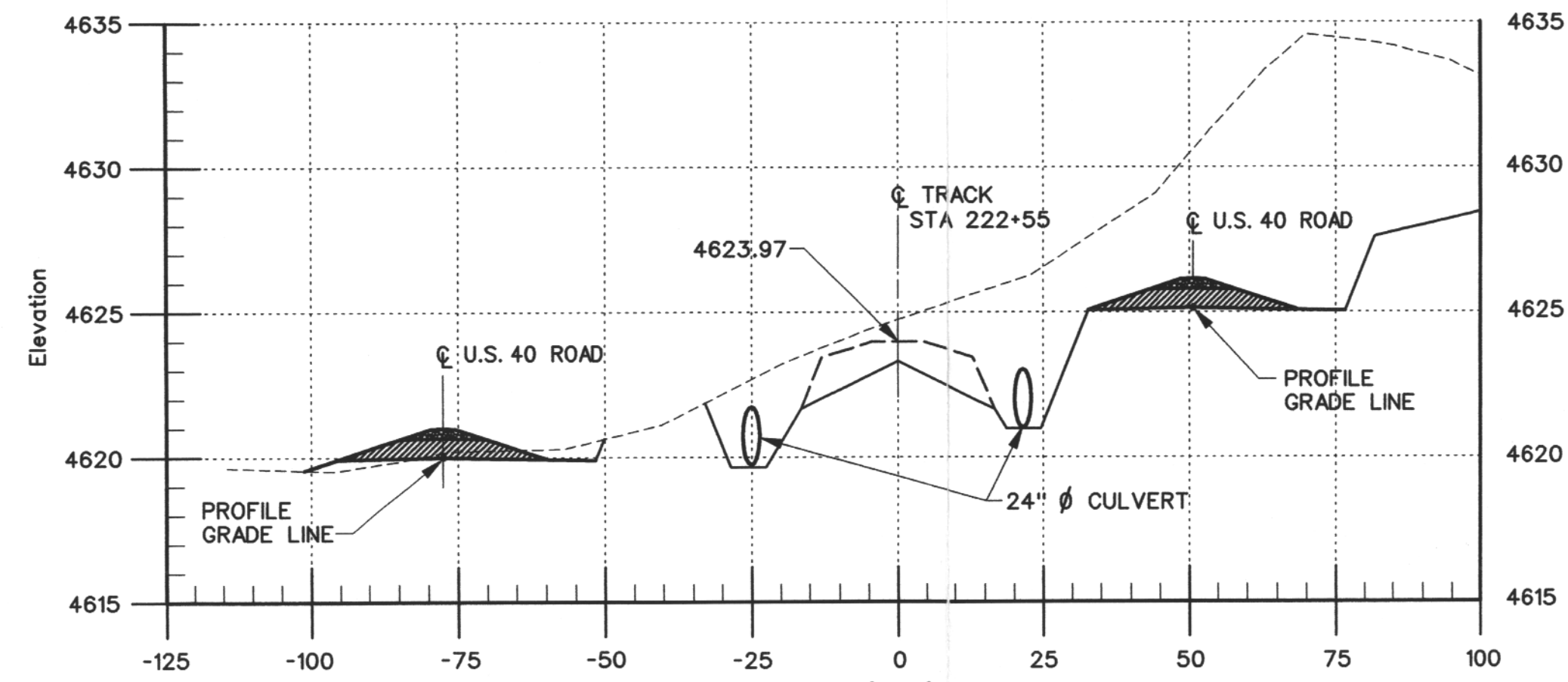
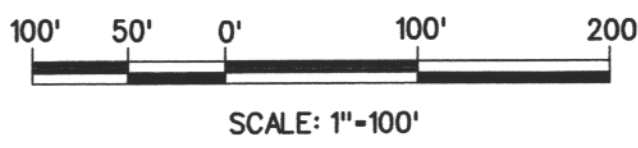


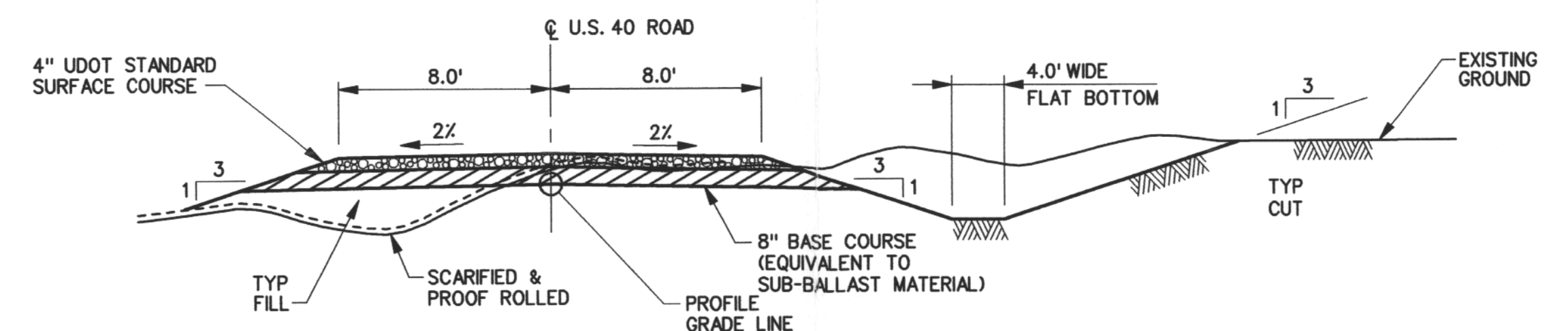
05996-DY-47



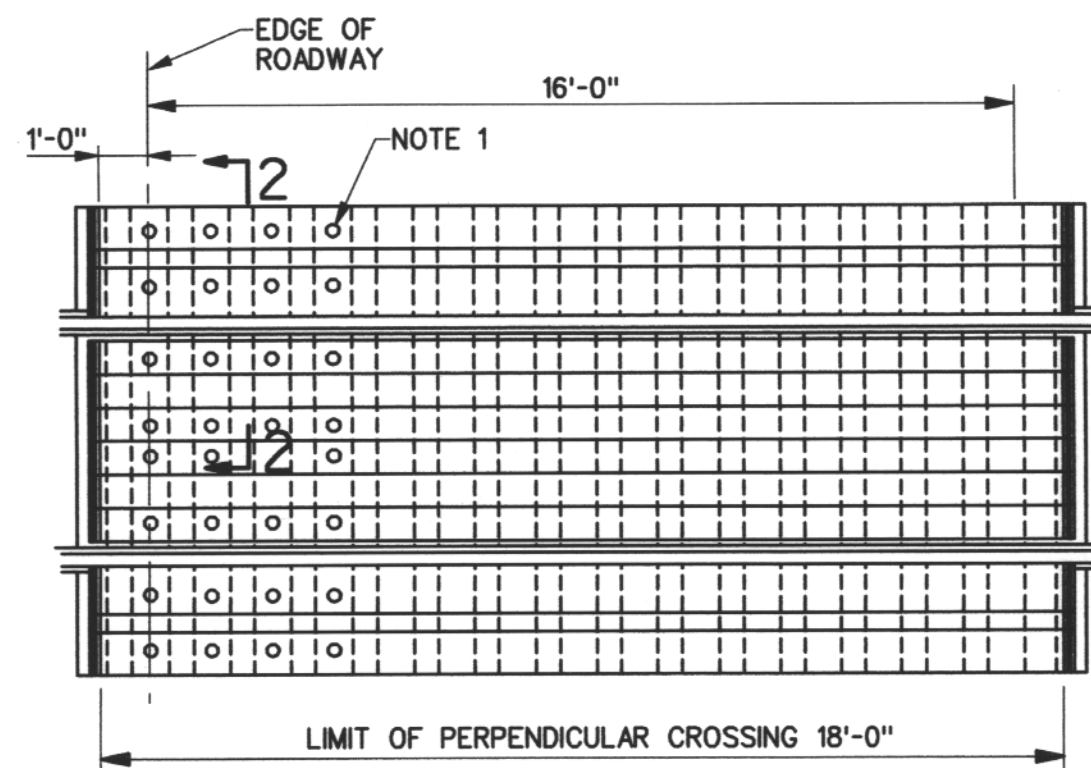
PLAN



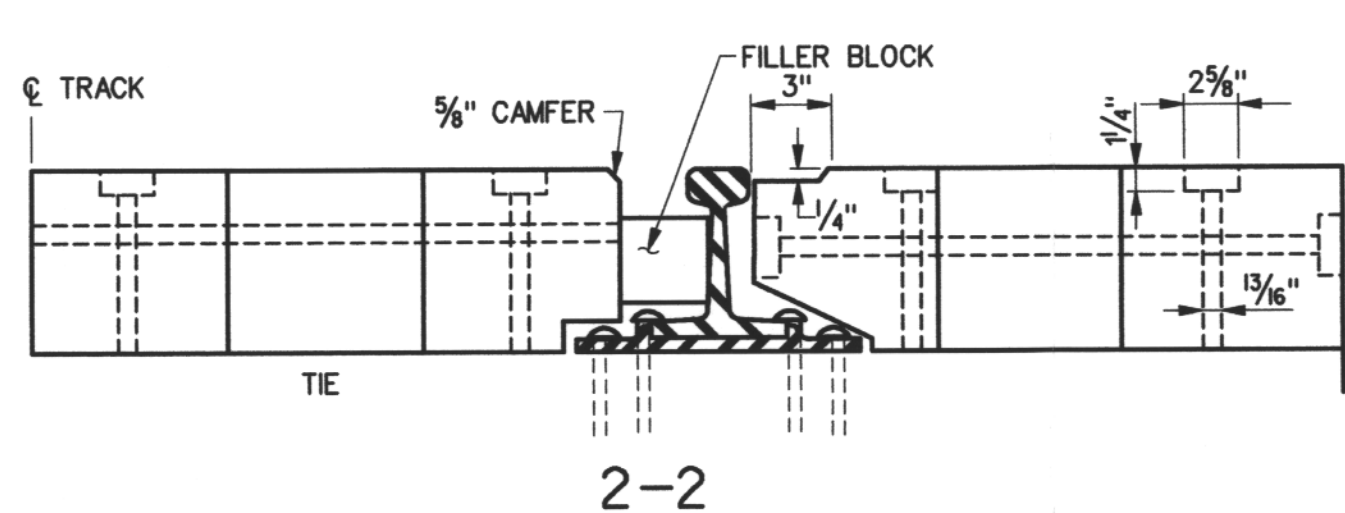
1-1 ELEVATION



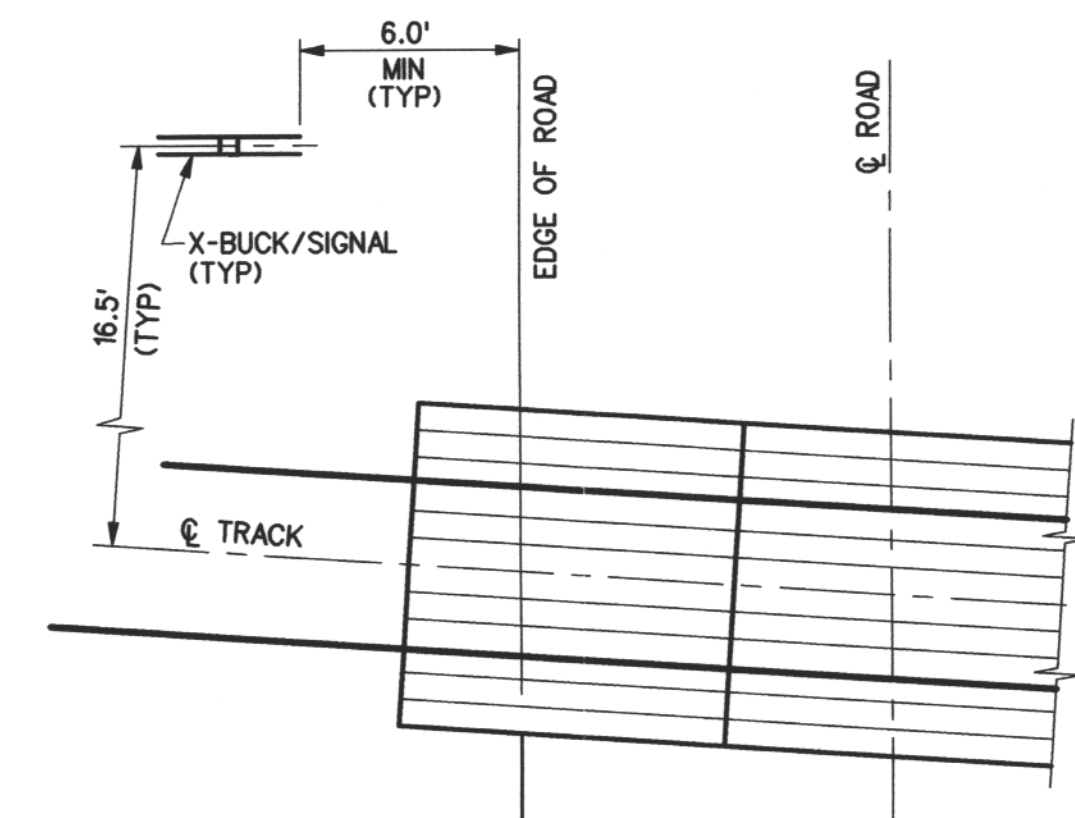
TYPICAL ROAD SECTION N.T.S.



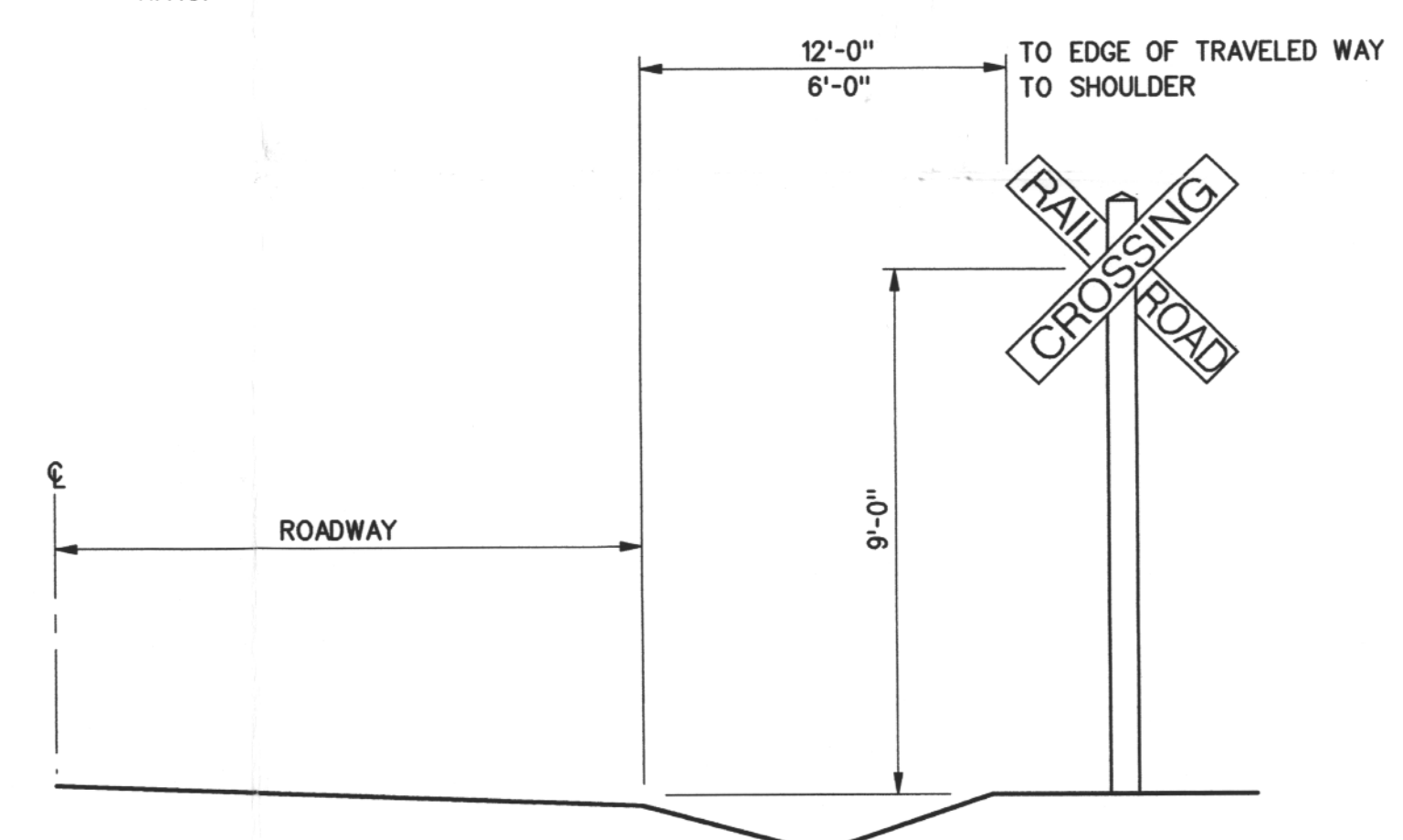
PREFABRICATED SECTIONAL TREATED TIMBER CROSSING



2-2

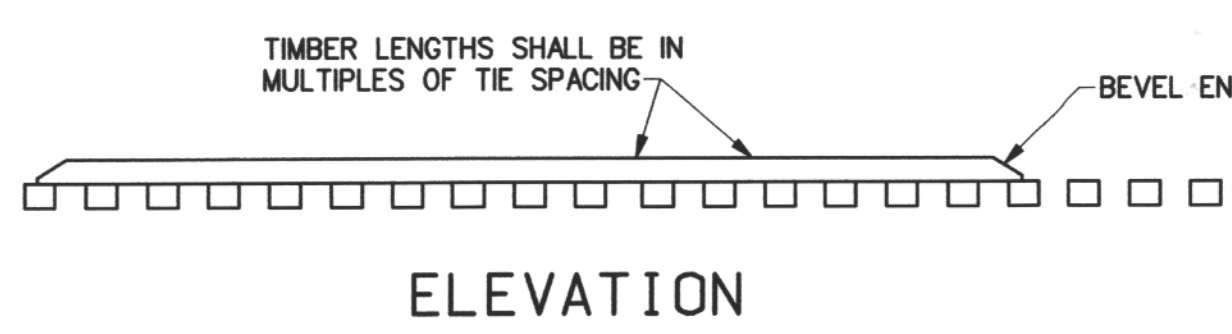


X-BUCK/SIGNAL LOCATION PLAN VIEW N.T.S.

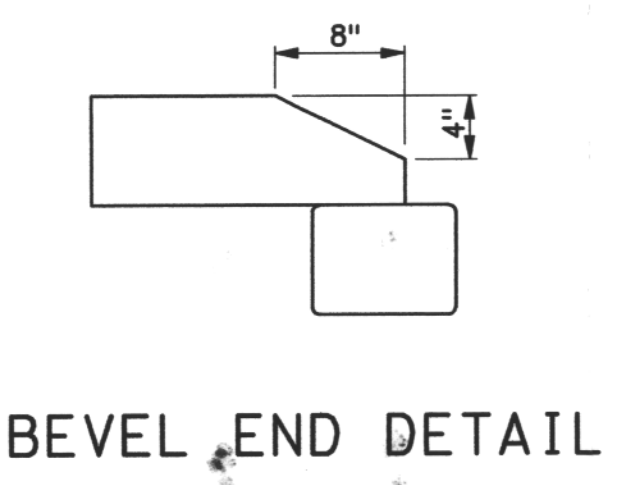


X-BUCK LOCATION FRONT VIEW N.T.S.

- NOTES:
1. EACH SECTION SHALL BE ANCHORED TO THE TIES WITH (8) 3/4" ϕ LAG BOLTS.
 2. THE INDIVIDUAL TIMBERS OF EACH SECTION SHALL BE PERMANENTLY HELD TOGETHER WITH A MINIMUM OF 3 STEEL BOLTS OR TWISTED DOWELS 3/4" ϕ MINIMUM.



ELEVATION



BEVEL END DETAIL

9909230170

APERTURE CARD

Docket # 72-22
 Accession # 20010301822
 Date 8/2/89 of LR
 Regulatory Docket File

**PFSF RAILROAD LINE
 OLD U.S. 40
 INTERSECTION PLAN**

PRIVATE FUEL STORAGE FACILITY
 PRIVATE FUEL STORAGE, LLC
 STONE & WEBSTER ENGINEERING CORPORATION
 DENVER, COLORADO

DRAWING NUMBER **05996-DY-47-A**

DESIGN BY: R.A. FELT
 DRAWN BY: R.A. FELT
 CHECKED BY: W.B. SWIGERT
 FILE NO. 0599602
 PFS0Y47.DGN

REVISION	DESCRIPTION	BY	DATE	REVISION	DESCRIPTION	BY	DATE	REVISION	DESCRIPTION	BY	DATE	REVISION	DESCRIPTION	BY	DATE	REVISION	DESCRIPTION	BY	DATE