

05996-DY-39

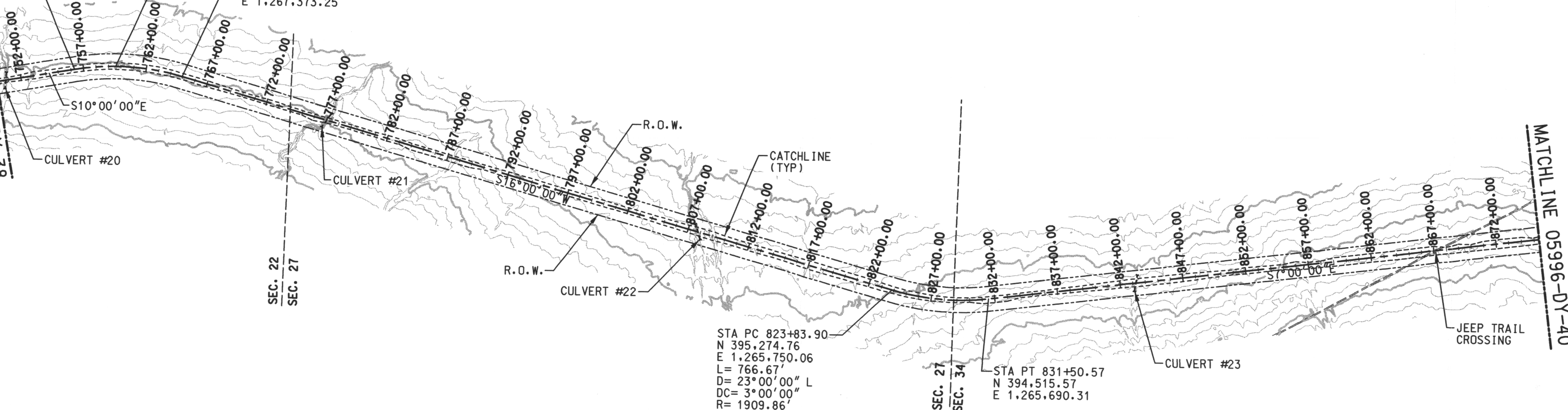


STA PC 756+28.35  
 N 401,793.58  
 E 1,267,418.22  
 L = 866.67'  
 D = 26°00'00" R  
 DC = 3°00'00"  
 R = 1909.86'

STA POL 759+50.00  
 HASTING'S CUT-OFF

STA PT 764+95.02  
 N 400,935.51  
 E 1,267,373.25

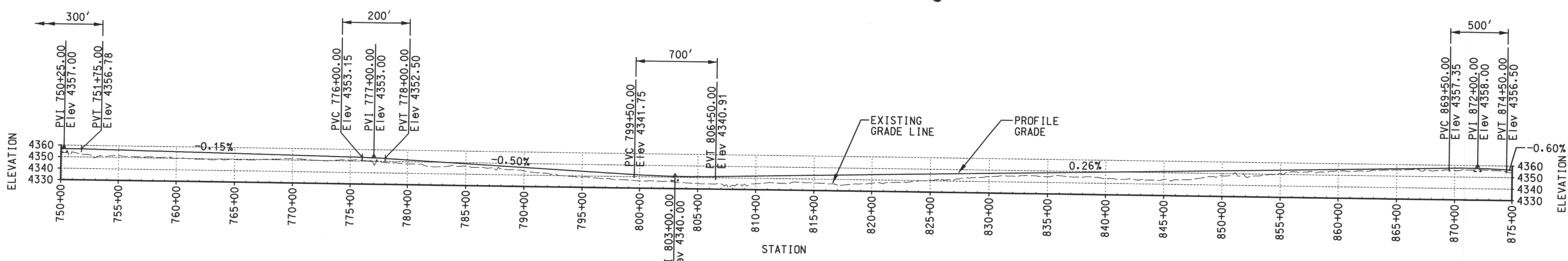
MATCHLINE 05996-DY-38



PLAN  
SCALE: 1"=500'

# 9909230160

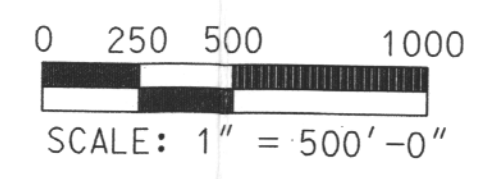
APERTURE CARD



PROFILE  
SCALE: 1"=500' (HOR)  
1"=50' (VERT)

Docket # 72-22  
 Accession # 9909230160  
 Date 8/31/99 of 1  
 Regulatory Docket File

- NOTES:**
- FOR GENERAL NOTES, LEGEND AND REFERENCE DRAWINGS, SEE DRAWING 05996-DY-30.
  - COMPUTATIONS BASED ON ARC DEFINITION.
  - FOR CULVERT LOCATIONS AND SIZES, SEE CULVERT SCHEDULE ON DRAWING 05996-DY-49.
  - FOR TRACK SECTION, SEE TYPICAL TRACK SECTION ON DRAWING 05996-DY-32.
  - FOR TYPICAL JEEP TRAIL CROSSING, SEE DRAWING 05996-DY-48.



REVISION	DESCRIPTION	BY	CHK	DATE	REVISION	DESCRIPTION	BY	CHK	DATE	REVISION	DESCRIPTION	BY	CHK	DATE	REVISION	DESCRIPTION	BY	CHK	DATE	REVISION	DESCRIPTION	BY	CHK	DATE

**PFSF RAILROAD LINE  
 PLAN & PROFILE- SHEET 7**

PRIVATE FUEL STORAGE FACILITY  
 PRIVATE FUEL STORAGE, LLC  
 STONE & WEBSTER ENGINEERING CORPORATION  
 DENVER, COLORADO

**DRAWING NUMBER 05996-DY-39-A**

DESIGN BY R. COLE     DRAWN BY R. COLE  
 CHECKED BY D. W. HAYES     CHECKED BY W. B. SWIGERT

SHEET NO. 0599602     FILE NO. PFS039.DGN