



UNITED STATES
NUCLEAR REGULATORY COMMISSION
WASHINGTON, D. C. 20555

March 9, 1982

Docket No. 50-317
50-318

~~LICENSE AUTHORITY NOT TO BE USED~~

~~DO NOT REMOVE~~

Posted
Amdt 68
to DPR-53

Mr. A. E. Lundvall, Jr.
Vice President-Supply
Baltimore Gas & Electric Company
P. O. Box 1475
Baltimore, Maryland 21203

Dear Mr. Lundvall:

The Commission has issued the enclosed Amendment Nos. 68 and 50 to Facility Operating License Nos. DPR-53 and DPR-69 For Calvert Cliffs Nuclear Power Plant, Unit Nos. 1 and 2. These amendments consist of changes to the Technical Specifications in response to your application dated January 22, 1982.

The amendments revise the Appendix A and Appendix B Technical Specifications (TS) to reflect the recent management reorganization at Baltimore Gas and Electric Company (BG&E.) In addition, the Appendix A TS are revised to incorporate shift staffing requirements which conform to NUREG-0737, Item I.A.1.3.2, "Shift manning, minimum shift crew," and reporting requirements relating to pressurizer safety and relief valve failures and challenges in accordance with NUREG-0737, Item II.K.3.3, "Reporting Safety Valve and Relief Valve failures and challenges."

Copies of the Safety Evaluation and the Notice of Issuance are also enclosed.

Sincerely,

David Jaffe, Project Manager
Operating Reactors Branch #3
Division of Licensing

Enclosures:

1. Amendment No. 68 to DPR-53
2. Amendment No. 50 to DPR-69
3. Safety Evaluation
4. Notice of Issuance

cc: w/enclosures
See next page

Baltimore Gas and Electric Company

James A. Biddison, Jr.
General Counsel
Baltimore Gas and Electric Company
P. O. Box 1475
Baltimore, MD 21203

George F. Trowbridge, Esquire
Shaw, Pittman, Potts and Trowbridge
1800 M Street, N. W.
Washington, D. C. 20036

Mr. R. C. L. Olson, Principal Engineer
Nuclear Licensing Analysis Unit
Baltimore Gas and Electric Company
Room 922 - G&E Building
P. O. Box 1475
Baltimore, MD 21203

Mr. Leon B. Russell
Plant Superintendent
Calvert Cliffs Nuclear Power Plant
Maryland Routes 2 & 4
Lusby, MD 20657

Bechtel Power Corporation
Attn: Mr. J. C. Judd
Chief Nuclear Engineer
15740 Shady Grove Road
Gaithersburg, MD 20760

Combustion Engineering, Inc.
Attn: Mr. P. W. Kruse, Manager
Engineering Services
P. O. Box 500
Windsor, CT 06095

Public Document Room
Calvert County Library
Prince Frederick, MD 20678

Director, Department of State Planning
301 West Preston Street
Baltimore, MD 21201

Mr. R. M. Douglass, Manager
Quality Assurance Department
Fort Smallwood Road Complex
P. O. Box 1475
Baltimore, MD 21203

Mr. T. L. Syndor, General Supervisor
Operations Quality Assurance
Calvert Cliffs Nuclear Power Plant
Maryland Routes 2 & 4
Lusby, MD 20657

Ms. Mary Harrison, President
Calvert County Board of County Commissioners
Prince Frederick, MD 20768

U. S. Environmental Protection Agency
Region III Office
Attn: Regional Radiation Representative
Curtis Building (Sixth Floor)
Sixth and Walnut Streets
Philadelphia, PA 19106

Mr. Ralph E. Architzel
Resident Reactor Inspector
NRC Inspection and Enforcement
P. O. Box 437
Lusby, MD 20657

Mr. Charles B. Brinkman
Manager - Washington Nuclear Operations
Combustion Engineering, Inc.
4853 Cordell Avenue, Suite A-1
Bethesda, MD 20014

Mr. J. A. Tierman, Manager
Nuclear Power Department
Calvert Cliffs Nuclear Power Plant
Maryland Routes 2 & 4
Lusby, MD 20657

Mr. W. J. Lippold, Supervisor
Nuclear Fuel Management
Baltimore Gas and Electric Company
Calvert Cliffs Nuclear Power Plant
P. O. Box 1475
Baltimore, Maryland 21203

Mr. R. E. Denton, General Supervisor
Training & Technical Services
Calvert Cliffs Nuclear Power Plant
Maryland Routes 2 & 4
Lusby, MD 20657

cc w/enclosure(s) and incoming
dated:

Administrator, Power Plant Siting Program
Energy and Coastal Zone Administration
Department of Natural Resources
Tawes State Office Building
Annapolis, MD 21204

Regional Administrator
Nuclear Regulatory Commission, Region I
Office of Inspection and Enforcement
631 Park Avenue
King of Prussia, Pennsylvania 19406



UNITED STATES
NUCLEAR REGULATORY COMMISSION
WASHINGTON, D. C. 20555

BALTIMORE GAS AND ELECTRIC COMPANY

DOCKET NO. 50-317

CALVERT CLIFFS NUCLEAR POWER PLANT UNIT NO. 1

AMENDMENT TO FACILITY OPERATING LICENSE

Amendment No. 68
License No. DPR-53

1. The Nuclear Regulatory Commission (the Commission) has found that:
 - A. The application for amendment by Baltimore Gas & Electric Company (the licensee) dated January 22, 1982, complies with the standards and requirements of the Atomic Energy Act of 1954, as amended (the Act) and the Commission's rules and regulations set forth in 10 CFR Chapter I;
 - B. The facility will operate in conformity with the application, the provisions of the Act, and the rules and regulations of the Commission;
 - C. There is reasonable assurance (i) that the activities authorized by this amendment can be conducted without endangering the health and safety of the public, and (ii) that such activities will be conducted in compliance with the Commission's regulations;
 - D. The issuance of this amendment will not be inimical to the common defense and security or to the health and safety of the public; and
 - E. The issuance of this amendment is in accordance with 10 CFR Part 51 of the Commission's regulations and all applicable requirements have been satisfied.


2. Accordingly, the license is amended by changes to the Technical Specifications as indicated in the attachment to this license amendment, and paragraph 2.C.(2) of Facility Operating License No. DPR-53 is hereby amended to read as follows:

(2) Technical Specifications

The Technical Specifications contained in Appendices A and B, as revised through Amendment No. 68 are hereby incorporated in the license. The licensee shall operate the facility in accordance with the Technical Specifications.

3. This license amendment is effective as of the date of issuance

FOR THE NUCLEAR REGULATORY COMMISSION



Robert A. Clark, Chief
Operating Reactors Branch #3
Division of Licensing

Attachment:
Changes to the
Technical Specifications

Date of Issuance: March 9, 1982

ATTACHMENT TO LICENSE AMENDMENT NO. 68

FACILITY OPERATING LICENSE NO. DPR-53

DOCKET NO. 50-317

Replace the following pages of the Appendix A and B Technical Specifications with the enclosed pages as indicated. The revised pages are identified by Amendment number and contain vertical lines indicating the area of change. The corresponding overleaf pages are provided to maintain document completeness.

Appendix A

Page

6-2
6-4
6-15

Appendix B

Figure 5.2-1

6.0 ADMINISTRATIVE CONTROLS

6.1 RESPONSIBILITY

6.1.1 The Plant Superintendent shall be responsible for overall facility operation and shall delegate in writing the succession to this responsibility during his absence.

6.2 ORGANIZATION

OFFSITE

6.2.1 The offsite organization for facility management and technical support shall be as shown on Figure 6.2-1.

FACILITY STAFF

6.2.2 The Facility organization shall be as shown on Figure 6.2-2 and:

- a. Each on duty shift shall be composed of at least the minimum shift crew composition shown in Table 6.2-1.
- b. At least one licensed Operator shall be in the control room when fuel is in the reactor.
- c. At least two licensed Operators shall be present in the control room during reactor start-up, scheduled reactor shutdown and during recovery from reactor trips.
- d. An individual qualified in radiation protection procedures shall be on site when fuel is in the reactor.
- e. All CORE ALTERATIONS after the initial fuel loading shall be directly supervised by either a licensed Senior Reactor Operator or Senior Reactor Operator Limited to Fuel Handling who has no other concurrent responsibilities during this operation.
- f. A site Fire Brigade of at least 5 members shall be maintained onsite at all times. The Fire Brigade shall not include the minimum shift crew necessary for safe shutdown of both units (4 members) or any personnel required for other essential functions during a fire emergency.

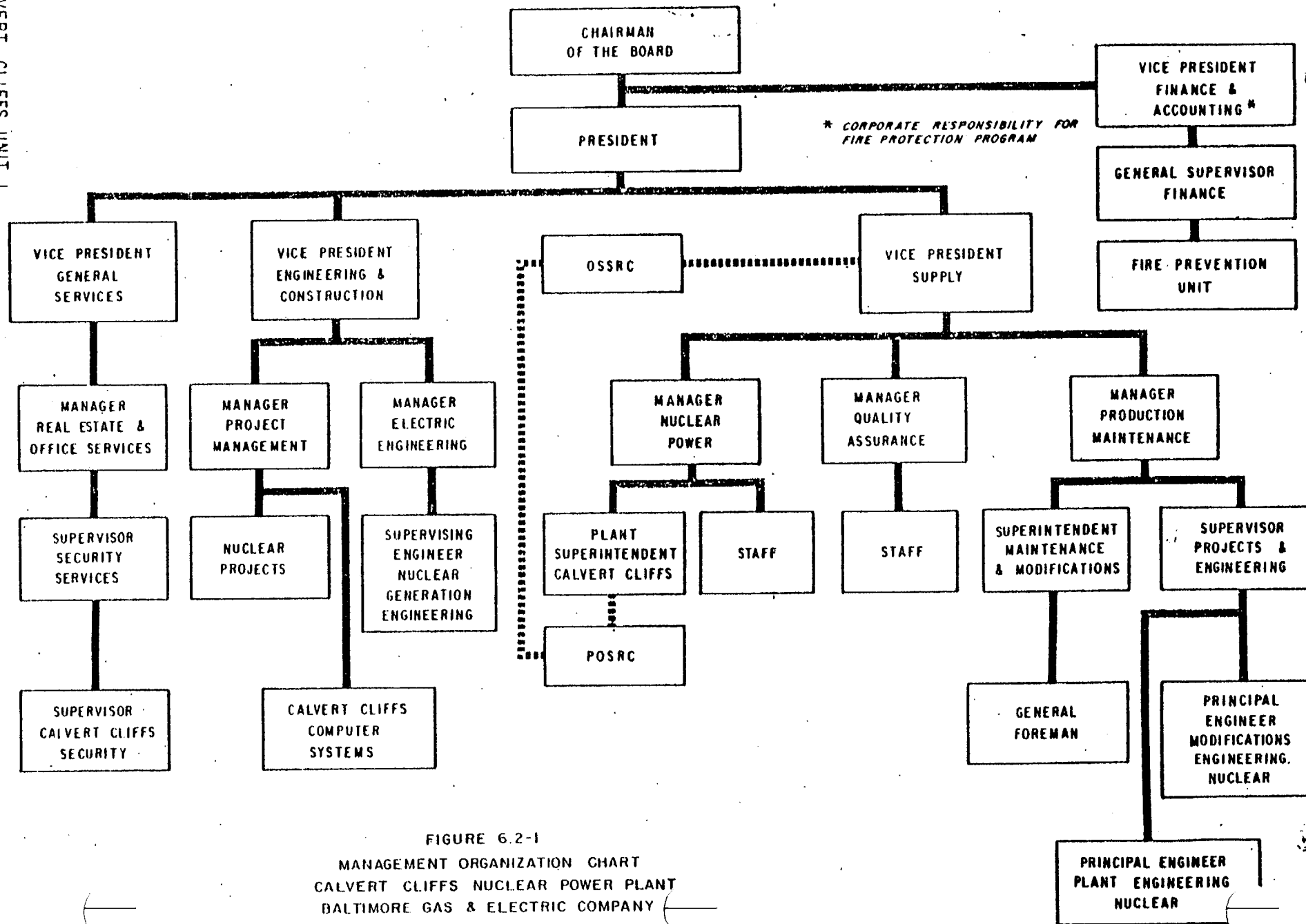
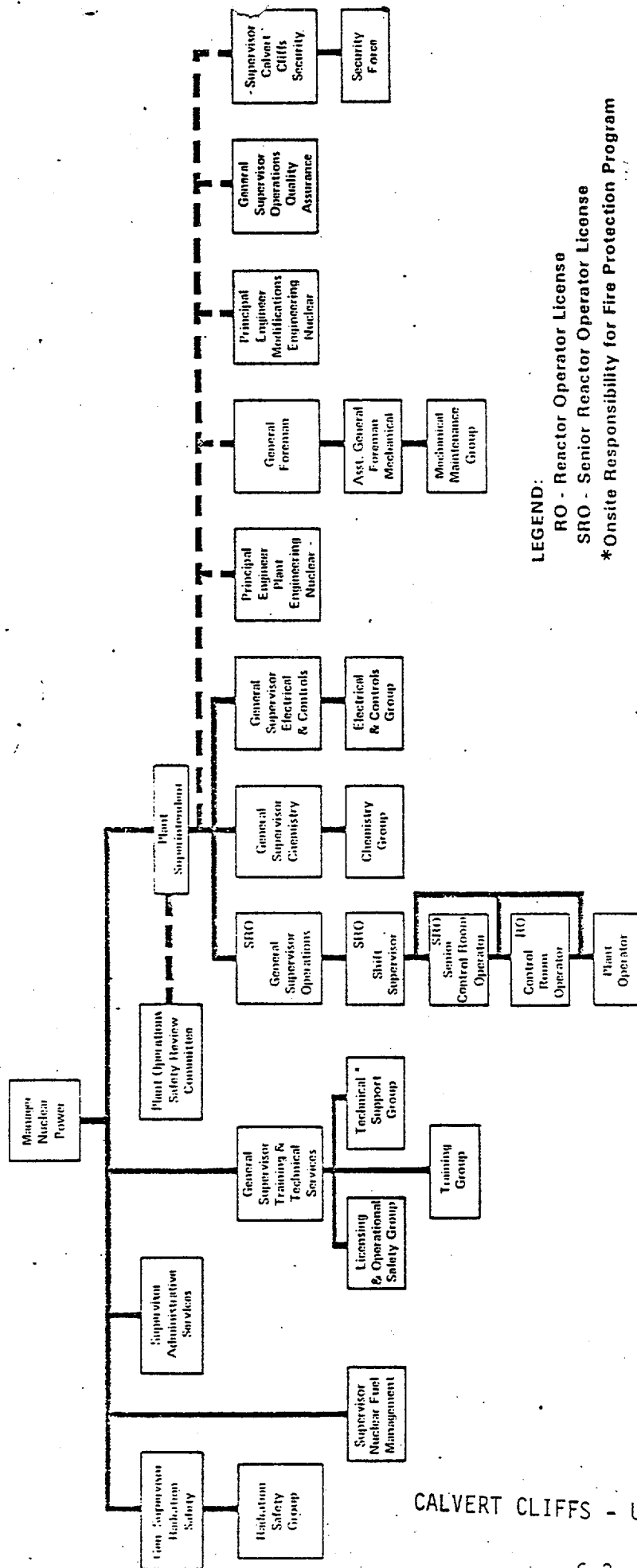


FIGURE 6.2-1
MANAGEMENT ORGANIZATION CHART
CALVERT CLIFFS NUCLEAR POWER PLANT
BALTIMORE GAS & ELECTRIC COMPANY



LEGEND:
 RO - Reactor Operator License
 SRO - Senior Reactor Operator License
 * Onsite Responsibility for Fire Protection Program

FIGURE 6.2.2 Organization Chart (Two Unit Operation) - Calvert Cliffs Nuclear Power Plant
 Baltimore Gas and Electric Company

TABLE 6.2-1

MINIMUM SHIFT CREW COMPOSITION #

Condition of Unit 1 - Unit 2 in MODES 1, 2, 3 or 4

LICENSE. CATEGORY	APPLICABLE MODES	
	1, 2, 3 & 4	5 & 6
SOL**	2	2*
OL**	3	3
Non-Licensed	3	3
Shift Technical Advisor	1##	1##

Condition of Unit 1 - Unit 2 in MODES 5 or 6

LICENSE CATEGORY	APPLICABLE MODES	
	1, 2, 3 & 4	5 & 6
SOL**	2	1*
OL**	3	2
Non-Licensed	3	3
Shift Technical Advisor	1##	0

ADMINISTRATIVE CONTROLS

6.9.1.3 Startup reports shall be submitted within (1) 90 days following completion of the startup test program, (2) 90 days following resumption or commencement of commercial power operation, or (3) 9 months following initial criticality, whichever is earliest. If the Startup Report does not cover all three events (i.e., initial criticality, completion of startup test program, and resumption or commencement of commercial power operation), supplementary reports shall be submitted at least every three months until all three events have been completed.

ANNUAL REPORTS ^{1/}

6.9.1.4 Annual reports covering the activities of the unit as described below for the previous calendar year shall be submitted prior to March 1 of each year. The initial report shall be submitted prior to March 1 of the year following initial criticality.

6.9.1.5 Reports required on an annual basis shall include:

- a. A tabulation on an annual basis of the number of station, utility, and other personnel (including contractors) receiving exposures greater than 100 mrem/yr and their associated man rem exposure according to work and job functions, ^{2/} e.g., reactor operations and surveillance, inservice inspection, routine maintenance, special maintenance (describe maintenance), waste processing, and refueling. The dose assignment to various duty functions may be estimates based on pocket dosimeter, TLD, or film badge measurements. Small exposures totalling less than 20% of the individual total dose need not be accounted for. In the aggregate, at least 80% of the total whole body dose received from external sources shall be assigned to specific major work functions.
- b. The complete results of steam generator tube inservice inspections performed during the report period (reference Specification 4.4.5.5.b).
- c. Documentation of all failures and challenges to the pressurizer PORVs or safety valves.

^{1/} A single submittal may be made for a multiple unit station. The submittal should combine those sections that are common to all units at the station.

^{2/} This tabulation supplements the requirements of §20.407 of 10 CFR Part 20.

ADMINISTRATIVE CONTROLS

MONTHLY OPERATING REPORT

6.9.1.6 Routine reports of operating statistics and shutdown experience shall be submitted on a monthly basis to the Director, Office of Inspection and Enforcement, U. S. Nuclear Regulatory Commission, Washington, D. C. 20555, ATTN: Document Control Desk, with a copy to the Regional Administrator and to the NRC Resident Inspector, no later than the 15th of each month following the calendar month covered by the report.

REPORTABLE OCCURRENCES

6.9.1.7 The REPORTABLE OCCURRENCES of Specifications 6.9.1.8 and 6.9.1.9 below, including corrective actions and measures to prevent recurrence, shall be reported to the NRC. Supplemental reports may be required to fully describe final resolution of occurrence. In case of corrected or supplemental reports, a licensee event report shall be completed and reference shall be made to the original report date.

PROMPT NOTIFICATION WITH WRITTEN FOLLOWUP

6.9.1.8 The types of events listed below shall be reported within 24 hours by telephone and confirmed by telegraph, mailgram, or facsimile transmission to the Director of the Regional Office, or his designate no later than the first working day following the event, with a written followup report within 14 days. The written followup report shall include, as a minimum, a completed copy of a licensee event report form. Information provided on the licensee event report form shall be supplemented, as needed, by additional narrative material to provide complete explanation of the circumstances surrounding the event.

- a. Failure of the reactor protection system or other systems subject to limiting safety system settings to initiate the required protective function by the time a monitored parameter reaches the setpoint specified as the limiting safety system setting in the technical specifications or failure to complete the required protective function.
- b. Operation of the unit or affected systems when any parameter or operation subject to a limiting condition for operation is less conservative than the least conservative aspect of the limiting condition for operation established in the technical specifications.
- c. Abnormal degradation discovered in fuel cladding, reactor coolant pressure boundary, or primary containment.

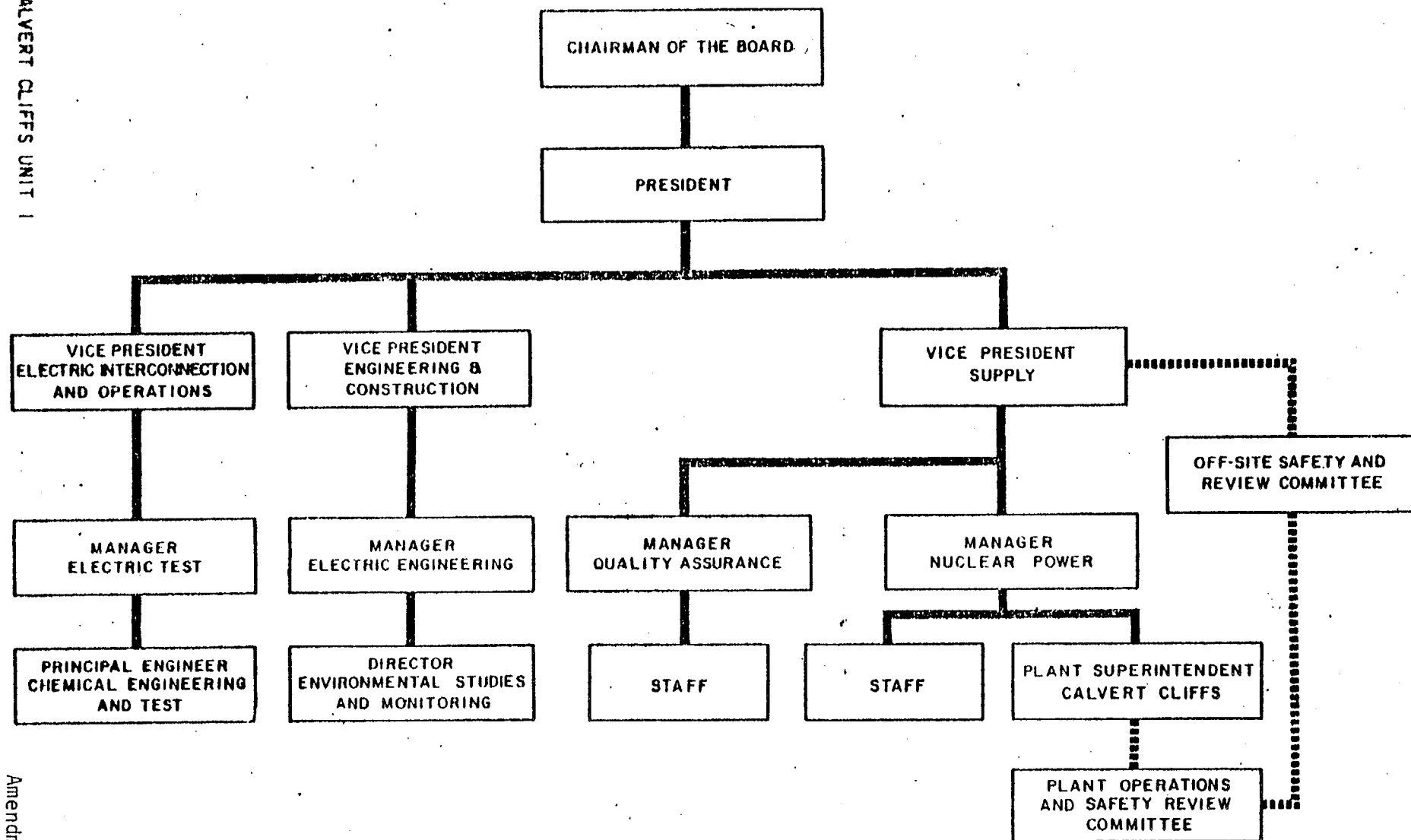


FIGURE 5.2-1
MANAGEMENT ORGANIZATION CHART RELATING TO
ENVIRONMENTAL MATTERS
CALVERT CLIFFS NUCLEAR POWER PLANT
BALTIMORE GAS & ELECTRIC COMPANY



UNITED STATES
NUCLEAR REGULATORY COMMISSION
WASHINGTON, D. C. 20555

BALTIMORE GAS AND ELECTRIC COMPANY

DOCKET NO. 50-318

CALVERT CLIFFS NUCLEAR POWER PLANT UNIT NO. 2

AMENDMENT TO FACILITY OPERATING LICENSE

Amendment No. 50
License No. DPR 69

1. The Nuclear Regulatory Commission (the Commission) has found that:
 - A. The application for amendment by Baltimore Gas & Electric Company (the licensee) dated January 22, 1982, complies with the standards and requirements of the Atomic Energy Act of 1954, as amended (the Act) and the Commission's rules and regulations set forth in 10 CFR Chapter I;
 - B. The facility will operate in conformity with the application, the provisions of the Act, and the rules and regulations of the Commission;
 - C. There is reasonable assurance (i) that the activities authorized by this amendment can be conducted without endangering the health and safety of the public and (ii) that such activities will be conducted in compliance with the Commission's regulations;
 - D. The issuance of this amendment will not be inimical to the common defense and security or to the health and safety of the public; and
 - E. The issuance of this amendment is in accordance with 10 CFR Part 51 of the Commission's regulations and all applicable requirements have been satisfied.


2. Accordingly, the license is amended by changes to the Technical Specifications as indicated in the attachment to this license amendment, and paragraph 2.C.2 of Facility Operating License No. DPR-69 is hereby amended to read as follows:

2. Technical Specifications

The Technical Specifications contained in Appendices A and B, as revised through Amendment No. 50 are hereby incorporated in the license. The licensee shall operate the facility in accordance with the Technical Specifications.

3. This license amendment is effective as of the date of issuance.

FOR THE NUCLEAR REGULATORY COMMISSION


Robert A. Clark, Chief
Operating Reactors Branch #3
Division of Licensing

Attachment:
Changes to the
Technical Specifications

Date of Issuance: March 9, 1982

ATTACHMENT TO LICENSE AMENDMENT NO. 50

FACILITY OPERATING LICENSE NO. DPR- 69

DOCKET NO. 50-318

Replace the following pages of the Appendix A and B Technical Specifications with the enclosed pages as indicated. The revised pages are identified by Amendment number and contain vertical lines indicating the area of change. The corresponding overleaf pages are provided to maintain document completeness.

Appendix A

Page

6-2

6-4

6-15

Appendix B

Figure 5.2-1

6.0 ADMINISTRATIVE CONTROLS

6.1 RESPONSIBILITY

6.1.1 The Plant Superintendent shall be responsible for overall facility operation and shall delegate in writing the succession to this responsibility during his absence.

6.2 ORGANIZATION

OFFSITE

6.2.1 The offsite organization for facility management and technical support shall be as shown on Figure 6.2-1.

FACILITY STAFF

6.2.2 The Facility organization shall be as shown on Figure 6.2-2 and:

- a. Each on duty shift shall be composed of at least the minimum shift crew composition shown in Table 6.2-1.
- b. At least one licensed Operator shall be in the control room when fuel is in the reactor.
- c. At least two licensed Operators shall be present in the control room during reactor start-up, scheduled reactor shutdown and during recovery from reactor trips.
- d. An individual qualified in radiation protection procedures shall be on site when fuel is in the reactor.
- e. All CORE ALTERATIONS after the initial fuel loading shall be directly supervised by either a licensed Senior Reactor Operator or Senior Reactor Operator Limited to Fuel Handling who has no other concurrent responsibilities during this operation.
- f. A site Fire Brigade of at least 5 members shall be maintained onsite at all times. The Fire Brigade shall not include the minimum shift crew necessary for safe shutdown of both units (4 members) or any personnel required for other essential functions during a fire emergency.

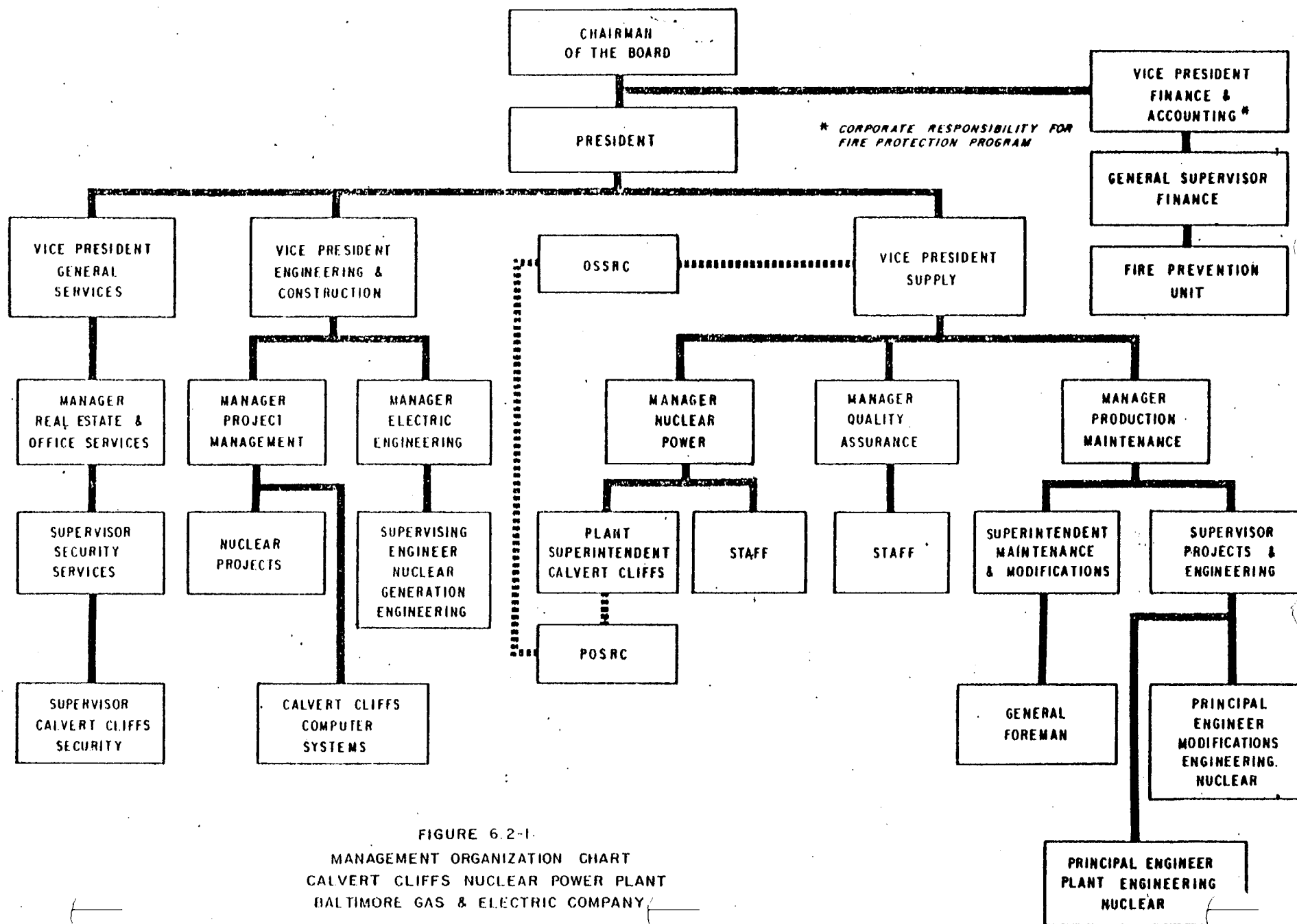
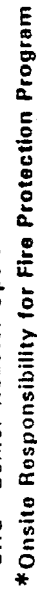


FIGURE 6.2-1
 MANAGEMENT ORGANIZATION CHART
 CALVERT CLIFFS NUCLEAR POWER PLANT
 BALTIMORE GAS & ELECTRIC COMPANY



Baltimore Gas and Electric Company

TABLE 6.2-1

MINIMUM SHIFT CREW COMPOSITION #

Condition of Unit 2 - Unit 1 in MODES 1, 2, 3 or 4

LICENSE CATEGORY	APPLICABLE MODES	
	1, 2, 3 & 4	5 & 6
SOL**	2	2*
OL**	3	3
Non-Licensed	3	3
Shift Technical Advisor	1##	1##

Condition of Unit 2 - Unit 1 in MODES 5 or 6

LICENSE CATEGORY	APPLICABLE MODES	
	1, 2, 3 & 4	5 & 6
SOL**	2	1*
OL**	3	2
Non-Licensed	3	3
Shift Technical Advisor	1##	0

ADMINISTRATIVE CONTROLS

6.9.1.3 Startup reports shall be submitted within (1) 90 days following completion of the startup test program, (2) 90 days following resumption or commencement of commercial power operation, or (3) 9 months following initial criticality, whichever is earliest. If the Startup Report does not cover all three events (i.e., initial criticality, completion of startup test program, and resumption or commencement of commercial power operation), supplementary reports shall be submitted at least every three months until all three events have been completed.

ANNUAL REPORTS ^{1/}

6.9.1.4 Annual reports covering the activities of the unit as described below for the previous calendar year shall be submitted prior to March 1 of each year. The initial report shall be submitted prior to March 1 of the year following initial criticality.

6.9.1.5 Reports required on an annual basis shall include:

- a. A tabulation on an annual basis of the number of station, utility, and other personnel (including contractors) receiving exposures greater than 100 mrem/yr and their associated man rem exposure according to work and job functions,^{2/} e.g., reactor operations and surveillance, inservice inspection, routine maintenance, special maintenance (describe maintenance), waste processing, and refueling. The dose assignment to various duty functions may be estimates based on pocket dosimeter, TLD, or film badge measurements. Small exposures totalling less than 20% of the individual total dose need not be accounted for. In the aggregate, at least 80% of the total whole body dose received from external sources shall be assigned to specific major work functions.
- b. The complete results of steam generator tube inservice inspections performed during the report period (reference Specification 4.4.5.5.b).
- c. Documentation of all failures and challenges to the pressurizer PORVs or safety valves.

^{1/} A single submittal may be made for a multiple unit station. The submittal should combine those sections that are common to all units at the station.

^{2/} This tabulation supplements the requirements of §20.407 of 10 CFR Part 20.

ADMINISTRATIVE CONTROLS

MONTHLY OPERATING REPORT

6.9.1.6 Routine reports of operating statistics and shutdown experience shall be submitted on a monthly basis to the Director, Office of Inspection and Enforcement, U. S. Nuclear Regulatory Commission, Washington, D. C. 20555, ATTN: Document Control Desk, with a copy to the Regional Administrator and to the NRC Resident Inspector, no later than the 15th of each month following the calendar month covered by the report.

REPORTABLE OCCURRENCES

6.9.1.7 The REPORTABLE OCCURRENCES of Specifications 6.9.1.8 and 6.9.1.9 below, including corrective actions and measures to prevent recurrence, shall be reported to the NRC. Supplemental reports may be required to fully describe final resolution of occurrence. In case of corrected or supplemental reports, a licensee event report shall be completed and reference shall be made to the original report date.

PROMPT NOTIFICATION WITH WRITTEN FOLLOWUP

6.9.1.8 The types of events listed below shall be reported within 24 hours by telephone and confirmed by telegraph, mailgram, or facsimile transmission to the Director of the Regional Office, or his designate no later than the first working day following the event, with a written followup report within 14 days. The written followup report shall include, as a minimum, a completed copy of a licensee event report form. Information provided on the licensee event report form shall be supplemented, as needed, by additional narrative material to provide complete explanation of the circumstances surrounding the event.

- a. Failure of the reactor protection system or other systems subject to limiting safety system settings to initiate the required protective function by the time a monitored parameter reaches the setpoint specified as the limiting safety system setting in the technical specifications or failure to complete the required protective function.
- b. Operation of the unit or affected systems when any parameter or operation subject to a limiting condition for operation is less conservative than the least conservative aspect of the limiting condition for operation established in the technical specifications.
- c. Abnormal degradation discovered in fuel cladding, reactor coolant pressure boundary, or primary containment.

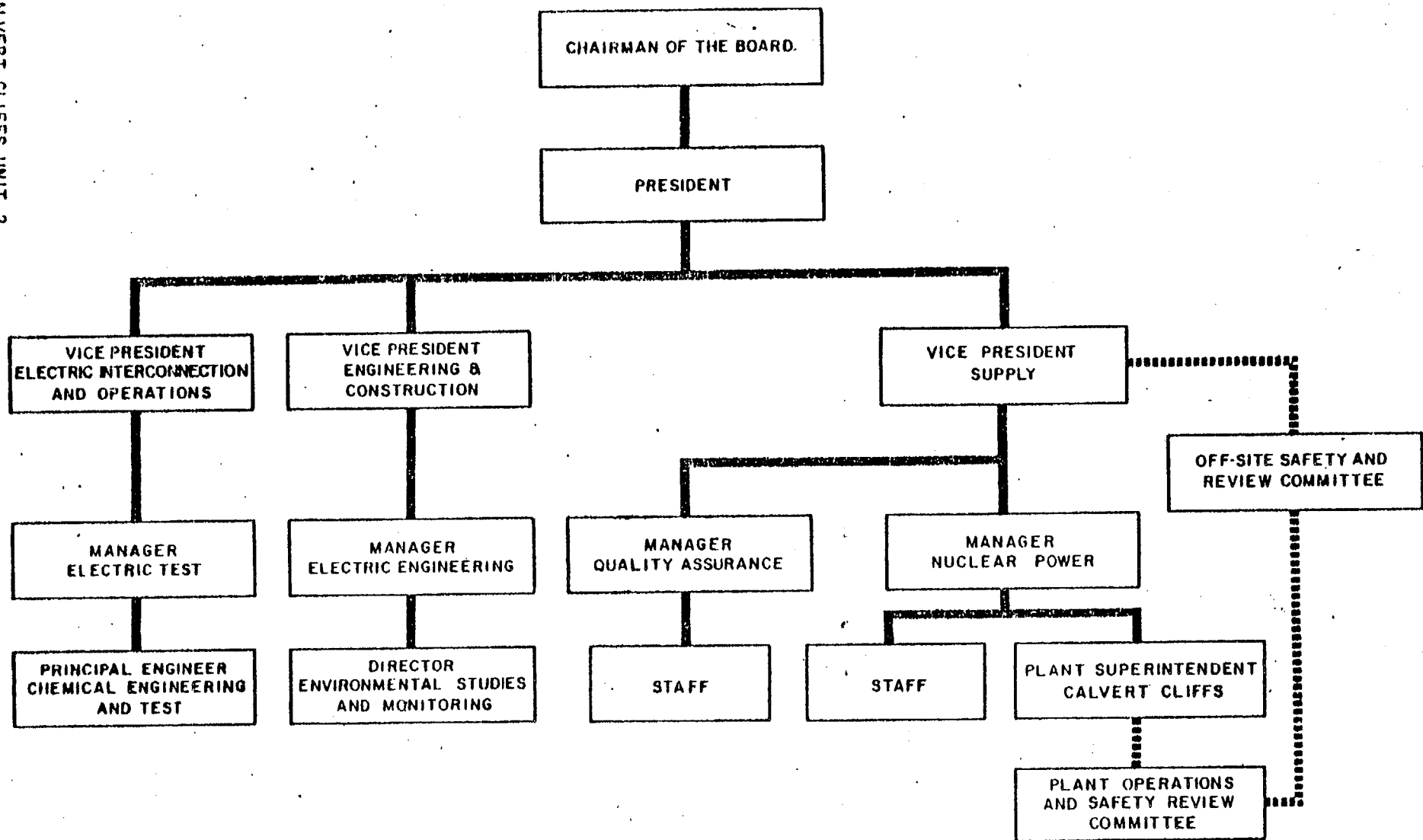


FIGURE 5.2-1
MANAGEMENT ORGANIZATION CHART RELATING TO
ENVIRONMENTAL MATTERS
CALVERT CLIFFS NUCLEAR POWER PLANT
BALTIMORE GAS & ELECTRIC COMPANY



UNITED STATES
NUCLEAR REGULATORY COMMISSION
WASHINGTON, D. C. 20555

SAFETY EVALUATION BY THE OFFICE OF NUCLEAR REACTOR REGULATION

SUPPORTING AMENDMENT NOS. 68 AND 50 TO

FACILITY OPERATING LICENSE NOS. DPR-53 AND DPR-69

BALTIMORE GAS AND ELECTRIC COMPANY

CALVERT CLIFFS NUCLEAR POWER PLANT, UNIT NOS. 1 AND 2

DOCKET NOS. 50-317 AND 50-318

Introduction

By application dated January 22, 1982, the Baltimore Gas and Electric Company requested changes to the Technical Specifications (TS) for Calvert Cliffs. The proposed changes in the TS reflect the recent management reorganization at Baltimore Gas and Electric Company (BG&E). In addition, Appendix A TS are revised to incorporate shift staffing requirements which conform to NUREG-0737, Item I.A.1.3.2. "Shift manning, minimum shift crew" and reporting requirements relating to pressurizer safety and relief valve failures and challenges in accordance with NUREG-0737, Item II.K.3.3, "Reporting Safety Valve and Relief Valve failures and challenges." In the course of reviewing the above changes to the TS, we have found it necessary to make certain changes in order to meet our requirements. The licensee has reviewed and concurred in these changes.

Discussion and Evaluation

The requirements of Appendix A TS 6.2.1 specify the Calvert Cliffs off-site organization for facility management and technical support. In a similar manner, Appendix B TS 5.2 specifies the plant and corporate organization relative to environmental matters at Calvert Cliffs. As a result of a recent reorganization at BG&E, Appendix A TS 6.2.1 and Appendix B TS 5.2 are amended by providing updated organization charts which reflect these recent changes. In addition, the shift staffing requirements of Appendix A TS 6.2.2a are amended to be consistent with the requirements of NUREG-0737, Item I.A.1.3.2. The change results in the requirement for an additional licensed (OL) operator, resulting in a total of three operators on shift duty, when one unit is in operation while the other unit is shut down. It is our intent that only two of the three OLs be required to be in the control room at any given time under the above referenced conditions. The shift staffing requirements, specified when one unit is in operation with the second unit defueled are deleted consistent with NUREG-0737, Item I.A.3.2. Accordingly, we conclude that the shift staffing requirements for Calvert Cliffs are consistent with NUREG-0737 Item I.A.3.2. Since the remaining part of Item I.A.1.3, "Limiting Overtime" (Item I.A.1.3.1) was approved for Calvert Cliffs via NRC letter dated November 3, 1981, our review of Item I.A.1.3 is complete for Calvert Cliffs Units 1 and 2.

With regard to reporting requirements, the licensee has agreed to report challenges to the pressurizer safety and relief valves, as part of their annual report. This requirement is incorporated in TS 6.9.1.5.c. This change satisfies our requirements concerning NUREG-0737 Item II.K.3.3.

Environmental Consideration

We have determined that the amendments do not authorize a change in effluent types or total amounts nor an increase in power level and will not result in any significant environmental impact. Having made this determination, we have further concluded that the amendments involve an action which is insignificant from the standpoint of environmental impact and, pursuant to 10 CFR §51.5(d)(4), that an environmental impact statement or negative declaration and environmental impact appraisal need not be prepared in connection with the issuance of these amendments.

Conclusion

We have concluded, based on the considerations discussed above, that: (1) because the amendments do not involve a significant increase in the probability or consequences of accidents previously considered and do not involve a significant decrease in a safety margin, the amendments do not involve a significant hazards consideration, (2) there is reasonable assurance that the health and safety of the public will not be endangered by operation in the proposed manner, and (3) such activities will be conducted in compliance with the Commission's regulations and the issuance of these amendments will not be inimical to the common defense and security or to the health and safety of the public.

Date: March 9, 1982

Principal Contributor:

Dave Jaffe

UNITED STATES NUCLEAR REGULATORY COMMISSIONDOCKET NOS. 50-317 AND 50-318BALTIMORE GAS AND ELECTRIC COMPANYNOTICE OF ISSUANCE OF AMENDMENTS TO FACILITYOPERATING LICENSES

The U. S. Nuclear Regulatory Commission (the Commission) has issued Amendment Nos. 68 and 50 to Facility Operating License Nos. DPR-53 and DPR-69 issued to Baltimore Gas and Electric Company, which revised Technical Specifications for operation of the Calvert Cliffs Nuclear Power Plant, Unit Nos. 1 and 2 located in Calvert County, Maryland. The amendments were effective on the date of issuance.

The amendments revise the Appendix A and Appendix B Technical Specifications to reflect the recent management reorganization, incorporate shift staffing requirements, and add a monthly reporting requirement concerning pressurizer safety and relief valve failures and challenges.

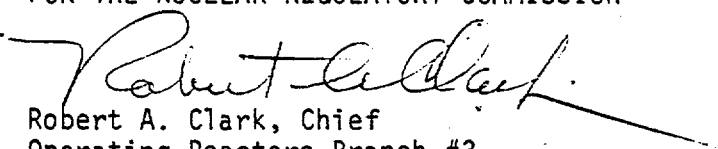
The application for the amendments complies with the standards and requirements of the Atomic Energy Act of 1954, as amended (the Act), and the Commission's rules and regulations. The Commission has made appropriate findings as required by the Act and the Commission's rules and regulations in 10 CFR Chapter I, which are set forth in the license amendments. Prior public notice of the amendments was not required since the amendments do not involve a significant hazards consideration.

The Commission has determined that the issuance of the amendments will not result in any significant environmental impact and that pursuant to 10 CFR §51.5(d)(4) an environmental impact statement, or negative declaration and environmental impact appraisal need not be prepared in connection with issuance of the amendments.

For further details with respect to this action, see (1) the application for amendments dated January 22, 1982, (2) Amendment Nos. 68 and 50 to License Nos. DPR-53 and DPR-69, and (3) the Commission's related Safety Evaluation. All of these items are available for public inspection at the Commission's Public Document Room, 1717 H Street, N.W., Washington, D. C. and at the Calvert County Library, Prince Frederick, Maryland. A copy of items (2) and (3) may be obtained upon request addressed to the U.S. Nuclear Regulatory Commission, Washington, D.C. 20555, Attention: Director, Division of Licensing.

Dated at Bethesda, Maryland, this 9th day of March, 1982,

FOR THE NUCLEAR REGULATORY COMMISSION



Robert A. Clark, Chief
Operating Reactors Branch #3
Division of Licensing