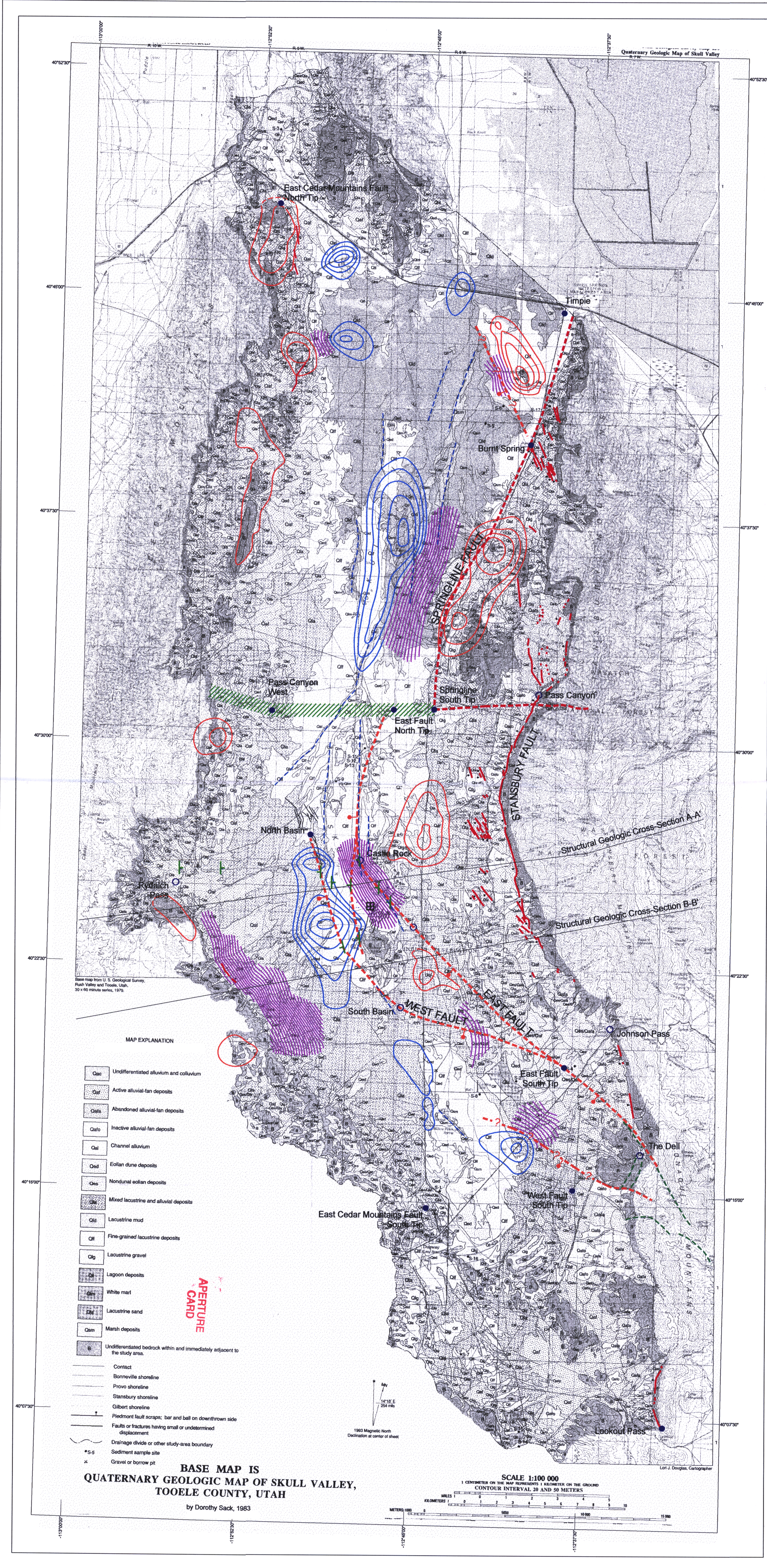


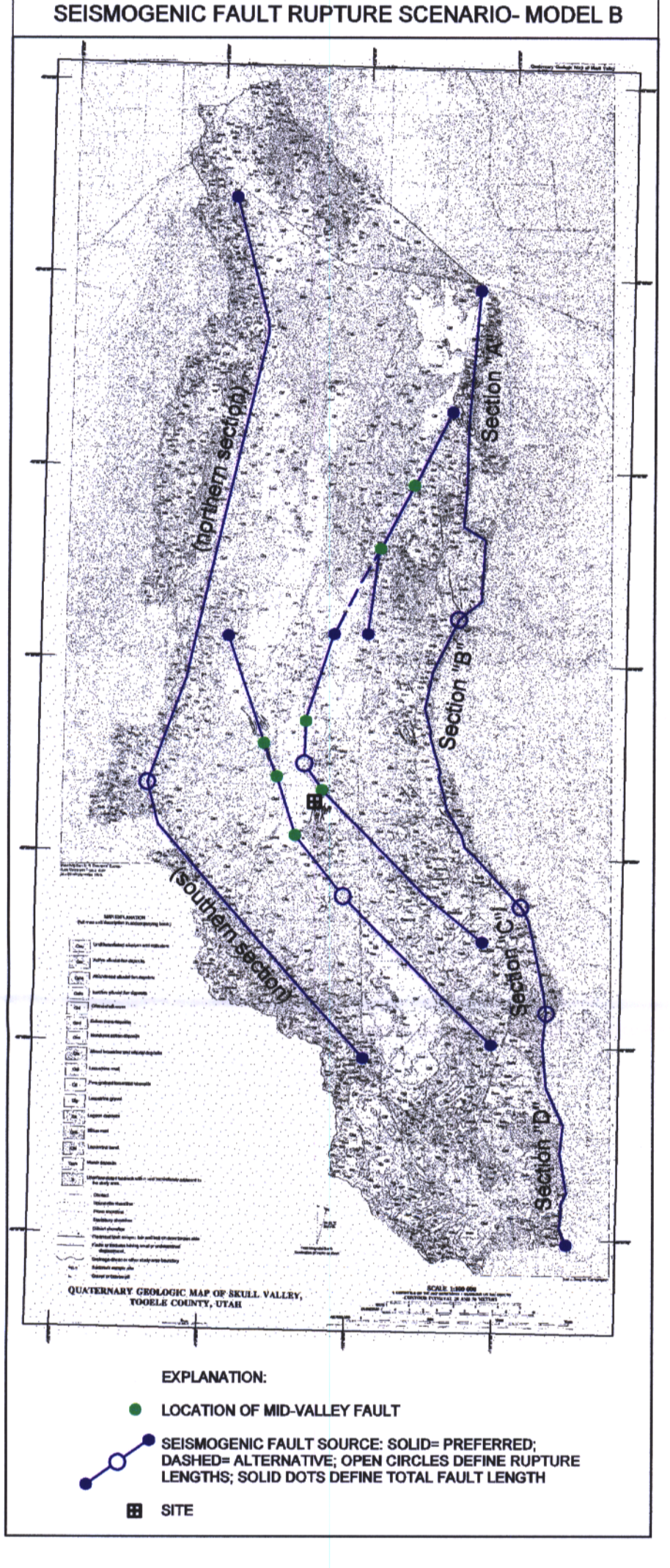
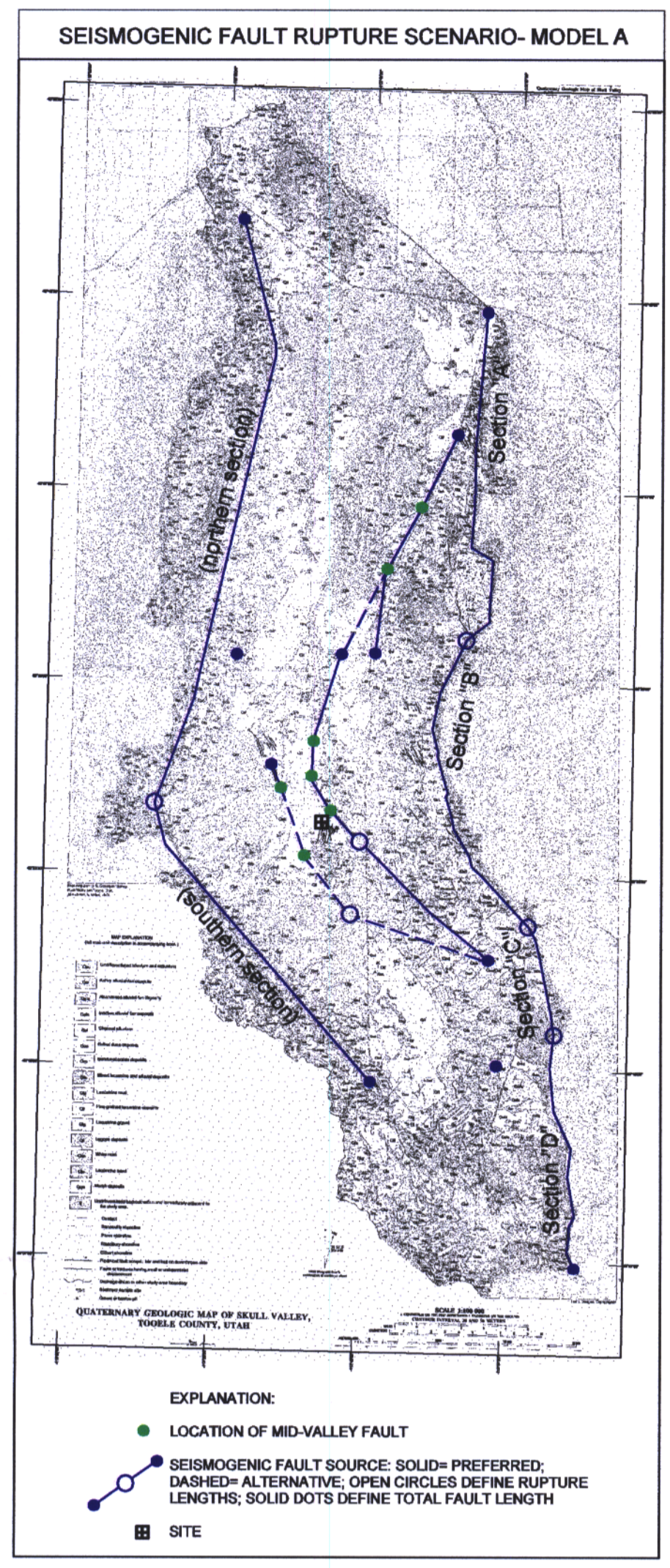
9903020123



- MAP EXPLANATION**
- Quc Undifferentiated alluvium and colluvium
 - Qaf Active alluvial-fan deposits
 - Qab Abandoned alluvial-fan deposits
 - Qai Inactive alluvial-fan deposits
 - Qal Channel alluvium
 - Qed Eolian dune deposits
 - Qes Nondunal eolian deposits
 - Qm Mixed lacustrine and alluvial deposits
 - Qls Lacustrine mud
 - Qlf Fine-grained lacustrine deposits
 - Qlg Lacustrine gravel
 - Qld Lagoon deposits
 - Qlw White marl
 - Qls Lacustrine sand
 - Qsm Marsh deposits
 - U Undifferentiated bedrock within and immediately adjacent to the study area.
 - Contact
 - Bonneville shoreline
 - Provo shoreline
 - Stansbury shoreline
 - Gilbert shoreline
 - Piedmont fault scarp: bar and ball on downthrown side
 - Faults or fractures having small or undetermined displacement
 - Drainage divide or other study-area boundary
 - *S-S Sediment sample site
 - x Gravel or borrow pit

**BASE MAP IS
QUATERNARY GEOLOGIC MAP OF SKULL VALLEY,
TOOELE COUNTY, UTAH**
by Dorothy Sack, 1983

SCALE 1:100 000
1 CENTIMETER ON THE MAP REPRESENTS 1 KILOMETER ON THE GROUND
CONTOUR INTERVAL 20 AND 50 METERS



- EXPLANATION:**
- QUATERNARY FAULT BASED ON PREVIOUS GEOLOGIC MAPPING; DASHED WHERE INFERRED
 - QUATERNARY FAULT BASED ON INTERPRETATIONS MADE DURING THIS STUDY; QUERIED WHERE UNCERTAIN
 - + LOCATION OF BEDROCK FAULT PICK FROM SEISMIC REFLECTION AND/OR GEOLOGIC DATA
 - BEDROCK FAULT BASED ON PREVIOUS GEOLOGIC MAPPING
 - PASS CANYON STRUCTURE: EXTENSION TO WEST FROM PASS CANYON FAULT (HELM, 1995) BASED ON GRAVITY DATA
 - LINEAR DRAINAGE
 - ANOMALOUS GRAVITY HIGH
 - ANOMALOUS GRAVITY LOW
 - GRAVITY GRADIENT EXCEEDS 6.0 mgal/km
 - LOCATION OF FAULT SOURCE SEGMENT BOUNDARY (DEFINES RUPTURE LENGTH)
 - LOCATION OF FAULT SOURCE TIP (DEFINES TOTAL FAULT LENGTH)

APERTURE CARD

9903020123

QUATERNARY FAULTS AND SUPPORTING DATA
SKULL VALLEY, UTAH
Private Fuel Storage Facility
Skull Valley, Utah

2/1/99
990220032

P-6

GEOMATRIX	Project No. 4790	Plate 6
-----------	------------------	---------

9903020123