

56-302

Document Transmittal #: 143511

Date: 01/22/2001

Page 1

To: DC DESK

MAC: N/A

Holder #: 1242

Destination:

Description: NRC

Document:	Revision:	II	IC#	Comment:	Copy Totals	
					Control	Master
REP02	73			REMOVE AND REPLACE	2	0
REINDEX	117			REMOVE AND REPLACE	2	0

**Instructions to the Addressee: Please verify the document(s) received agrees with the above information. Notify Document Control if changes are required to addressee information, or mark the transmittal and return as indicated below.**

Engineering managers are required by NEP-121 to determine if new, revised, or temporary changes to procedures affect job functions of their personnel. Managers will communicate change information appropriately and provide documentation of any training conducted to the Engineering Training Coordinator.

The signature indicates acknowledgment of receipt of the above document(s) and that documents have been updated. Return signed and dated transmittal to Document Control within 10 working days of transmittal date to mail code:

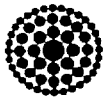
\_\_\_\_ SA2A

\_\_\_\_ Florida Power Corporation  
Document Control, SA2A  
Crystal River Energy Complex  
15760 W. Power Line St.  
Crystal River, FL 34428-6708

Signature of Addressee: \_\_\_\_\_ Date: \_\_\_\_\_

(End of Page)

A045



Florida  
Power  
CORPORATION

# RADIOLOGICAL EMERGENCY PLANNING DEPARTMENT PROCEDURE

REP Rev. 117  
DATE 01/22/01  
PAGE 1 of 1

TITLE: REP INDEX

<u>PROCEDURE NO.</u>	<u>TITLE</u>	<u>REVISION</u>	<u>DATE</u>
REP-01	Cancelled (Refer to REP-03.)		
REP-02	Activation and Notification of the Emergency Operations Facility Organization	73	01/22/01
REP-03	Operation of the Emergency Operations Facility	29	10/11/00
REP-03A	Setup of the Emergency Operations Facility	1	02/22/00
REP-04	Off-Site Radiological Dose Assessment Methods for the Emergency Operations Facility	9	02/16/96
REP-05	Cancelled (Refer to REP-03.)		
REP-06	Schedule for Radiological Emergency Response Plan Maintenance (limited distribution)	21	10/09/00
REP-07	Cancelled		
REP-08	Dissemination of Information Following an Emergency at Crystal River Unit 3	7	10/09/00
REP-09	Dose Assessment Software Control Program (issued only to REP Dept. personnel)	1	02/16/96
REP-10	Radiological Emergency Planning Administrative Instructions (issued only to REP Dept. personnel)	10	12/12/00
REP-11	Conduct of Drills and Exercises Supporting the Radiological Emergency Response Plan (issued only to REP Dept. personnel)	2	01/26/99
REP-12	Emergency Operations Facility Accident Assessment Procedure (limited distribution)	1	10/09/00

CONTINUED COPY  
NUCLEAR REGULATIONS  
H. 1111



# RADIOLOGICAL EMERGENCY PLANNING DEPARTMENT PROCEDURE

REP-02 Rev. 73

Date 01/22/01

Page 1 of 34

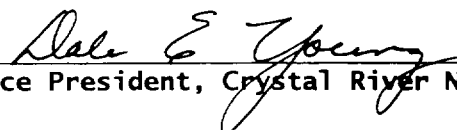
## ACTIVATION AND NOTIFICATION OF THE EMERGENCY OPERATIONS FACILITY ORGANIZATION

---

### REQUIRED APPROVALS

  
\_\_\_\_\_  
Supervisor, Emergency Preparedness

1/17/01  
Date

  
\_\_\_\_\_  
Vice President, Crystal River Nuclear Plant

1/17/01  
Date



# RADIOLOGICAL EMERGENCY PLANNING DEPARTMENT PROCEDURE

REP-02 Rev. 73

Date 01/22/01

Page 2 of 34

**TITLE:**

**ACTIVATION AND NOTIFICATION OF THE  
EMERGENCY OPERATIONS FACILITY ORGANIZATION**

## 1.0 PURPOSE

This procedure provides instructions for the activation of the EOF Organization in response to an emergency at CR-3.

## 2.0 SCOPE

- 2.1 This procedure describes the activation of the EOF Organization and provides initial directions for assembly of emergency response personnel. It contains telephone directories for the emergency response personnel and facilities necessary for effective implementation of the RERP, and provides instructions for notifying response personnel of changes in emergency classification or of the need for a shift change.
- 2.2 A Safety Assessment was performed for this procedure. A determination was made that this procedure is outside the scope of 10 CFR 50.59.

## 3.0 APPLICABLE REFERENCE DOCUMENTS

FPC CR-3 "Radiological Emergency Response Plan"

## 4.0 DEFINITIONS AND ABBREVIATIONS

Terms used in this procedure are consistent with the definitions and abbreviations provided in the RERP.

### 4.1 DEFINITIONS

#### **4.1.1 Activation:**

To provide notification to emergency response personnel of the need to respond to the EOF for staffing and operation.

#### **4.1.2 Operational:**

The minimum functions and communication links are established and required equipment is in proper working order per the EOF checklist in REP-03.



# **RADIOLOGICAL EMERGENCY PLANNING DEPARTMENT PROCEDURE**

REP-02 Rev. 73

Date 01/22/01

Page 3 of 34

**TITLE: ACTIVATION AND NOTIFICATION OF THE  
EMERGENCY OPERATIONS FACILITY ORGANIZATION**

## **4.2 ABBREVIATIONS**

CR-3 - Crystal River Unit 3  
ENC - Emergency News Center  
EOF - Emergency Operations Facility  
EOC - Emergency Operations Center  
EPC - Emergency Planning Coordinator  
FPC - Florida Power Corporation  
OSC - Operational Support Center  
REP - Radiological Emergency Planning  
RERP - Radiological Emergency Response Plan  
TSC - Technical Support Center

## **5.0 RESPONSIBILITIES AND ACTIONS**

### **5.1 INITIAL ACTIVATION**

The EOF Director is notified of any emergency that results in implementation of the RERP. In the event that the emergency is classified as a SITE AREA EMERGENCY or GENERAL EMERGENCY, the EOF Director will activate the EOF Organization. Based on assessments between the EOF Director and the Emergency Coordinator, the initial level of support required will be determined. The EOF Director will then notify those EOF members necessary for further assessment and response.

### **5.2 LEVEL OF ACTIVATION**

The level of involvement of the various members of the EOF Organization will depend strongly on the nature of the emergency and the actions required to respond and recover. Assessment by the EOF Director, therefore, is appropriate before notifying and assembling the complete EOF Organization. The following describes the levels of involvement associated with each of the emergency classes:

#### **a. Unusual Event**

The EOF Director is notified and will notify EOF Staff as the event warrants.

#### **b. Alert**

The Emergency Coordinator will notify the EOF Director, who will notify the EOF Facility Manager; the Assistant EOF Director; the EOF Technical Support Director; the Communications Director; the



# **RADIOLOGICAL EMERGENCY PLANNING DEPARTMENT PROCEDURE**

REP-02 Rev. 73

Date 01/22/01

Page 4 of 34

**TITLE: ACTIVATION AND NOTIFICATION OF THE  
EMERGENCY OPERATIONS FACILITY ORGANIZATION**

Director, Site Operations; and the Vice President, Crystal River Nuclear Plant. This notification will alert these individuals to stand by for further information, or may include a request for specific support.

The EOF Technical Support Director will notify the Corporate Health Physicist. The Corporate Health Physicist will call the EOF Dose Assessment Team members and activate at an ALERT.

The Vice President, Crystal River Nuclear Plant will notify the Senior Vice President and Chief Nuclear Officer.

The EOF Director may also activate, at his discretion, other portions of the EOF Organization deemed necessary. Nuclear Security should be called to activate the EOF group pagers.

An REP Staff member will request that an FPC representative respond to the Citrus EOC and Levy EOC, when applicable.

## **c. Site Area Emergency**

EOF members will be notified by telephone and/or pager of the emergency, and are required to report to their functional locations as specified in this procedure.

## **d. General Emergency**

EOF members will be notified by telephone and/or pager of the emergency, and are required to report to their functional locations as specified in this procedure.

## **5.3 EOF NOTIFICATIONS**

### **5.3.1 Notification Network**

In order to expedite notifications, the EOF Organization functions as a notification network. The notification network is designed to provide notification of RERP activation, instructions for staffing the emergency facilities, notification of changes in emergency classification, and relay of shift change instructions. Figure 1 illustrates this network. Attachment 1 provides a directory of emergency response personnel, including the emergency positions, primary and alternate designees, and their respective telephone numbers with information arranged for use as the notification network. Each emergency position/individual responsible for implementing the network is listed at the top of a page, followed by the emergency positions/individuals he/she is responsible for contacting. If neither the primary nor the alternate(s) can be reached, the EOF Director is to be notified to designate an individual to fill the position until the primary or alternate can be located.



**Florida  
Power**  
CORPORATION

# RADIOLOGICAL EMERGENCY PLANNING DEPARTMENT PROCEDURE

REP-02      Rev. 73

Date 01/22/01

Page 5 of 34

**TITLE:**

## ACTIVATION AND NOTIFICATION OF THE EMERGENCY OPERATIONS FACILITY ORGANIZATION

During normal working hours, notification of EOF members located at CR-3 may be via pagers and/or the plant public address system. If a SITE AREA EMERGENCY is declared, EOF members should report to the EOF immediately, regardless of whether he/she is the primary or alternate for that position. Before departing for the EOF, an individual in the EOF member's department should be notified in the event he/she is called while enroute. The EOF Director will determine final staffing as needed.

### 5.3.2 Special Considerations

The Corporate Security Specialist is not required to report directly to the EOF since he/she must maintain the mobility necessary for fulfillment of responsibilities. However, the Corporate Security Specialist must notify the EOF Director upon assuming his/her emergency role.

#### 5.4 NOTIFICATION OF CHANGE IN EMERGENCY CLASSIFICATION

After initially notifying EOF members that an emergency situation exists at CR-3, subsequent events may result in a reclassification of the emergency. Depending on the initial classification of the emergency and whether the change indicates a more or less serious emergency situation, varying changes in support may be appropriate. To assure EOF members are informed of changes in emergency classification in an expeditious manner, the network utilized for notification described above shall also provide the basis for notification of changes in emergency class.

Upon notification by the Emergency Coordinator that a change in emergency classification has occurred, the EOF Director shall initiate notification of the EOF Organization. This may be accomplished by announcement at the EOF, supplemented by telephone contacts; however, each individual position responsible for initial notifications per the network described in Section 5.3 above shall assure that each designated contact of the network is informed of the classification change. Each EOF member shall then respond as appropriate to the new classification or per directions provided through the EOF Director.

## 5.5 SHIFT CHANGE

Should the emergency situation appear to require long-term response and support, the EOF Director shall assess the need for providing personnel assignments for continuing support. If a shift change is required, the EOF Director should identify the emergency response positions necessary to maintain adequate response. Each individual filling those positions should contact their alternate to report to the emergency response facility. In the event a suitable alternate cannot be located in a timely manner, then that member should immediately inform his respective director to locate or identify a suitable replacement.



# RADIOLOGICAL EMERGENCY PLANNING DEPARTMENT PROCEDURE

REP-02      Rev. 73

Date 01/22/01

Page 6 of 34

**TITLE:**

## ACTIVATION AND NOTIFICATION OF THE EMERGENCY OPERATIONS FACILITY ORGANIZATION

Once the relief alternate arrives at the designated location, there shall be a briefing by the individual that has filled the position prior to the transferring of responsibilities. The briefing is to be as complete as possible and should entail, as a minimum, the scenario of the emergency, the impact on the emergency position, the contacts made, the response anticipated from inquiries made, the actions exercised, the justification for these actions, and conveyance of all forms and logs generated.

## 5.6 NOTIFICATION DIRECTORIES

5.6.1 As an integral part of this procedure, directories are provided for EOF personnel, support facilities, support organizations, and off-site organizations:

- a. Attachment 1 provides a directory of EOF personnel and office and home telephone numbers for notification purposes.
- b. Attachment 2 provides a directory of emergency response facilities and telephone numbers.
- c. Attachment 3 provides a directory of off-site technical organizations. The designated FPC contact is also provided.

5.6.2 Each EOF member should inform the EPC within one week of known changes in personnel when such changes affect the EOF personnel and/or telephone numbers.

5.6.3 The EPC shall be informed of changes to the listings for off-site organizations or miscellaneous support contacts.

5.6.4 These changes will be made and distributed by the EPC to holders of this procedure.

5.6.5 There shall be a quarterly review and update of the telephone numbers listed in the attachments of this procedure.

## 6.0 INTERPRETATION CONTACT

The responsibility for the development and maintenance of this procedure rests with the EPC. The EPC shall be contacted regarding any clarification or interpretation of requirements of this procedure.





# RADIOLOGICAL EMERGENCY PLANNING DEPARTMENT PROCEDURE

REP-02 Rev. 73

Date 01/22/01

Page 7 of 34

TITLE:

ACTIVATION AND NOTIFICATION OF THE  
EMERGENCY OPERATIONS FACILITY ORGANIZATION

## 7.0 REVISION HISTORY

Rev. 0	Date: <u>07/31/81</u>	Original Release (NSSD-24)
Rev. 0	Date: <u>10/30/81</u>	General revisions and change of designation to NL-18.
Rev. 1	Date: <u>02/10/82</u>	General Revisions
Rev. 0	Date: <u>08/30/82</u>	General revisions and change of designation to REP-02.
Rev. 1	Date: <u>12/31/82</u>	General Revisions
Rev. 2	Date: <u>05/11/83</u>	General Revisions
Rev. 3	Date: <u>09/30/83</u>	General Revisions
Rev. 4	Date: <u>02/29/84</u>	Completeness
Rev. 5	Date: <u>06/04/84</u>	Attachment 1 formatted for clarity and to reflect changes to CESO.
Rev. 6	Date: <u>08/06/84</u>	General Revisions
Rev. 7	Date: <u>10/22/84</u>	General Revisions
Rev. 8	Date: <u>01/18/85</u>	General Revisions
Rev. 9	Date: <u>04/15/85</u>	General revisions and change to notification network.
Rev. 10	Date: <u>07/15/85</u>	General Revisions
Rev. 11	Date: <u>10/15/85</u>	General Revisions
Rev. 12	Date: <u>01/31/86</u>	General Revisions
Rev. 13	Date: <u>05/16/86</u>	General Revisions
Rev. 14	Date: <u>08/11/86</u>	General Revisions
Rev. 15	Date: <u>10/15/86</u>	General Revisions
Rev. 16	Date: <u>01/16/87</u>	General Revisions
Rev. 17	Date: <u>04/16/87</u>	General Revisions
Rev. 18	Date: <u>07/20/87</u>	General Revisions
Rev. 19	Date: <u>10/23/87</u>	General Revisions
Rev. 20	Date: <u>11/30/87</u>	Corporate Command Center (CCC) Reorganization
Rev. 21	Date: <u>01/29/88</u>	General Revisions
Rev. 22	Date: <u>04/29/88</u>	General Revisions
Rev. 23	Date: <u>07/22/88</u>	General Revisions
Rev. 24	Date: <u>10/21/88</u>	General Revisions
Rev. 25	Date: <u>01/30/89</u>	General Revisions
Rev. 26	Date: <u>04/28/89</u>	General Revisions
Rev. 27	Date: <u>07/28/89</u>	General Revisions
Rev. 28	Date: <u>10/27/89</u>	General Revisions
Rev. 29	Date: <u>02/28/90</u>	General Revisions
Rev. 30	Date: <u>05/11/90</u>	General Revisions
Rev. 31	Date: <u>08/08/90</u>	General Revisions
Rev. 32	Date: <u>10/31/90</u>	General Revisions
Rev. 33	Date: <u>01/31/91</u>	General Revisions
Rev. 34	Date: <u>04/30/91</u>	General Revisions
Rev. 35	Date: <u>07/19/91</u>	General Revisions
Rev. 36	Date: <u>11/13/91</u>	General Revisions
Rev. 37	Date: <u>02/06/92</u>	General Revisions
Rev. 38	Date: <u>04/30/92</u>	General Revisions
Rev. 39	Date: <u>07/28/92</u>	CCC Deletion
Rev. 40	Date: <u>10/22/92</u>	General Revisions
Rev. 41	Date: <u>01/29/93</u>	General Revisions
Rev. 42	Date: <u>04/16/93</u>	General Revisions
Rev. 43	Date: <u>07/23/93</u>	General Revisions



# RADIOLOGICAL EMERGENCY PLANNING DEPARTMENT PROCEDURE

REP-02 Rev. 73

Date 01/22/01

Page 8 of 34

TITLE:

## ACTIVATION AND NOTIFICATION OF THE EMERGENCY OPERATIONS FACILITY ORGANIZATION

Rev. 44	Date: <u>10/26/93</u>	General Revisions
Rev. 45	Date: <u>01/14/94</u>	General Revisions
Rev. 46	Date: <u>04/15/94</u>	General Revisions
Rev. 47	Date: <u>07/22/94</u>	General Revisions
Rev. 48	Date: <u>10/18/94</u>	General Revisions
Rev. 49	Date: <u>01/27/95</u>	General Revisions
Rev. 50	Date: <u>05/05/95</u>	Editorial Revisions
Rev. 51	Date: <u>07/21/95</u>	Editorial Revisions
Rev. 52	Date: <u>10/24/95</u>	Editorial revisions resulting from Fourth Quarter 1995 review of notification rosters.
Rev. 53	Date: <u>02/16/96</u>	Editorial revisions for First Quarter 1996.
Rev. 54	Date: <u>04/19/96</u>	Editorial revisions for Second Quarter 1996.
Rev. 55	Date: <u>07/19/96</u>	Editorial revisions for Third Quarter 1996.
Rev. 56	Date: <u>10/07/96</u>	Editorial revisions for Fourth Quarter 1996. Added EOF Accident Assessment Team.
Rev. 57	Date: <u>02/28/97</u>	Editorial revisions for First Quarter 1997. Added EOF State and Local Government Liaison Call List and Attachment 4, "EOF Accountability/Fitness-for-Duty (FFD) Log for FPC Personnel."
Rev. 58	Date: <u>05/29/97</u>	Editorial revisions for Second Quarter 1997.
Rev. 59	Date: <u>08/19/97</u>	Editorial revisions for Third Quarter 1997. Added statement that Safety Assessment was performed.
Rev. 60	Date: <u>11/03/97</u>	Editorial revisions for Fourth Quarter 1997.
Rev. 61	Date: <u>02/12/98</u>	First Quarter 1998 Update
Rev. 62	Date: <u>04/27/98</u>	Second Quarter 1998 Update
Rev. 63	Date: <u>07/28/98</u>	Third Quarter 1998 Update
Rev. 64	Date: <u>10/08/98</u>	Fourth Quarter 1998 Update
Rev. 65	Date: <u>01/26/99</u>	First Quarter 1999 Update
Rev. 66	Date: <u>04/27/99</u>	Second Quarter 1999 Update
Rev. 67	Date: <u>07/09/99</u>	Third Quarter 1999 Update
Rev. 68	Date: <u>09/15/99</u>	Fourth Quarter 1999 Update
Rev. 69	Date: <u>01/17/00</u>	First Quarter 2000 Update
Rev. 70	Date: <u>04/18/00</u>	Second Quarter 2000 Update
Rev. 71	Date: <u>07/18/00</u>	Third Quarter 2000 Update
Rev. 72	Date: <u>10/10/00</u>	Fourth Quarter 2000 Update
Rev. 73	Date: <u>01/22/01</u>	First Quarter 2001 Update



# RADIOLOGICAL EMERGENCY PLANNING DEPARTMENT PROCEDURE

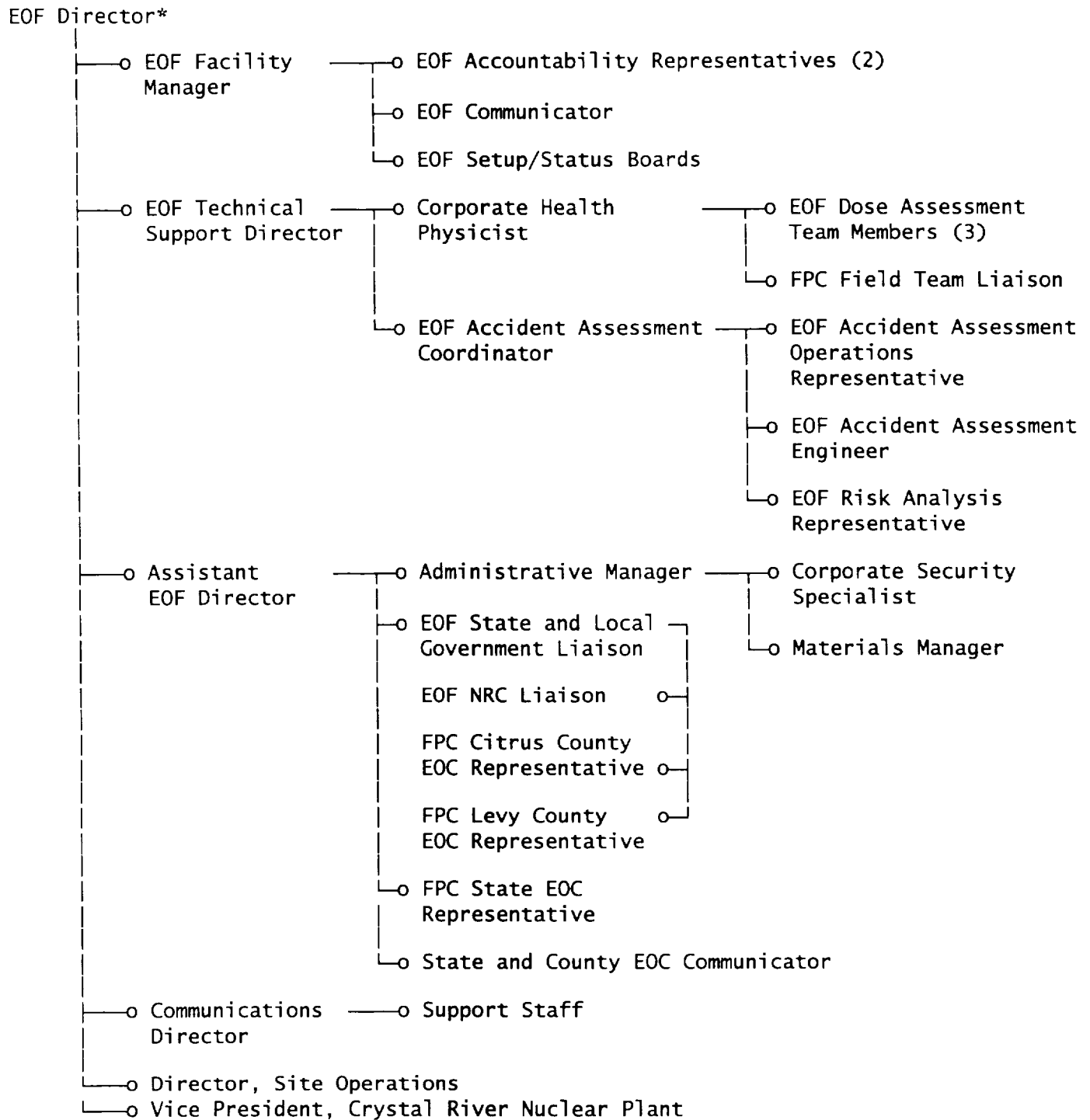
REP-02 Rev. 73

Date 01/22/01

Page 9 of 34

TITLE: ACTIVATION AND NOTIFICATION OF THE  
EMERGENCY OPERATIONS FACILITY ORGANIZATION

- FIGURE 1 -  
EOF NOTIFICATION NETWORK



\* Nuclear Security must be called to activate the EOF group pagers.



# RADIOLOGICAL EMERGENCY PLANNING DEPARTMENT PROCEDURE

REP-02 Rev. 73

Date 01/22/01

Page 10 of 34

TITLE:

ACTIVATION AND NOTIFICATION OF THE  
EMERGENCY OPERATIONS FACILITY ORGANIZATION

- ATTACHMENT 1 -  
EOF PERSONNEL DIRECTORY AND NOTIFICATION NETWORK

(Page 1 of 9)

EOF DIRECTOR CALL LIST

	<u>Name</u>	<u>Office Number</u>	<u>Home Number</u>
Primary:	R. W. Davis	352/563-4529 M/W 240-6050	352/746-9347 276-0168 (P)* 352/422-8403 (C)
Alternate:	S. L. Bernhoft	352/563-4566 M/W 240-3300	352/341-0003 276-0705 (P)* 352/422-8416 (C)
Alternate:	S. G. Johnson	352/563-4384 M/W 240-3200	352/489-0499 276-0172 (P)* 352/422-8445 (C)
Alternate:	J. H. Terry	352/563-4321 M/W 240-3247	352/489-1041 276-0183 (P)* 352/422-8425 (C)

P = Pager  
C = Cellular Phone

Positions enclosed by a box are required to declare the EOF operational.  
Contact only one individual per emergency position. Check appropriate box for individual contacted.

<u>Priority</u>	<u>Emergency Title</u>	<u>Contacted</u>	<u>Name</u>	<u>Office Number</u>	<u>Home Number</u>
1	EOF Facility Manager	<input type="checkbox"/> Primary	J. G. Austin	352/795-0504 M/W 240-6317	352/382-5413 276-0163 (P)* 352/422-8473 (C)
		<input type="checkbox"/> Alternate	W. E. Gwaltney	352/795-0504 M/W 240-6166	352/746-0359
		<input type="checkbox"/> Alternate	G. J. Sweeney	352/795-0504 M/W 240-6267	352/527-2380
		<input type="checkbox"/> Alternate	Vacant		
2	Assistant EOF Director	<input type="checkbox"/> Primary	K. F. Lancaster	352/563-2943 M/W 240-4040	352/344-0855 276-0691 (P)* 352/422-8931 (C)
		<input type="checkbox"/> Alternate	R. C. Widell	352/795-6486 M/W 240-4630	352/746-0646 276-0185 (P)* 352/422-8856 (C)
		<input type="checkbox"/> Alternate	W. J. Pike	352/563-4970 M/W 240-3642	352/527-8853 276-0673 (P)* 352/422-8409 (C)
		<input type="checkbox"/> Alternate	Vacant		

\* Access pager by dialing 1-800-280-6493, then follow instructions.



**Florida  
Power**  
CORPORATION

# RADIOLOGICAL EMERGENCY PLANNING DEPARTMENT PROCEDURE

REP-02 Rev. 73

Date 01/22/01

Page 11 of 34

**TITLE:**

**ACTIVATION AND NOTIFICATION OF THE  
EMERGENCY OPERATIONS FACILITY ORGANIZATION**

- ATTACHMENT 1 -  
EOF PERSONNEL DIRECTORY AND NOTIFICATION NETWORK

(Page 2 of 9)

## EOF DIRECTOR CALL LIST (Continued)

	<u>Name</u>	<u>Office Number</u>	<u>Home Number</u>
Primary:	R. W. Davis	352/563-4529 M/W 240-6050	352/746-9347 276-0168 (P)* 352/422-8403 (C)
Alternate:	S. L. Bernhoft	352/563-4566 M/W 240-3300	352/341-0003 276-0705 (P)* 352/422-8416 (C)
Alternate:	S. G. Johnson	352/563-4384 M/W 240-3200	352/489-0499 276-0172 (P)* 352/422-8445 (C)
Alternate:	J. H. Terry	352/563-4321 M/W 240-3247	352/489-1041 276-0183 (P)* 352/422-8425 (C)

P = Pager  
C = Cellular Phone

Positions enclosed by a box are required to declare the EOF operational.  
Contact only one individual per emergency position. Check appropriate box for individual contacted.

<u>Priority</u>	<u>Emergency Title</u>	<u>Contacted</u>	<u>Name</u>	<u>Office Number</u>	<u>Home Number</u>
3	EOF Technical Support Director	<input type="checkbox"/> Primary	J. A. Ranalli	352/563-4984 M/W 240-3284	352/597-7610 276-0490 (P)* 352/422-8893 (C)
		<input type="checkbox"/> Alternate	Vacant		
		<input type="checkbox"/> Alternate	T. E. Williams	352/563-4356 M/W 240-3886	352/795-9097 276-0478 (P)* 352/422-8513 (C)
		<input type="checkbox"/> Alternate	H. B. Oates	352/563-4789 M/W 240-3777	352/382-4652 276-0174 (P)* 352/422-8414 (C)
4	Communications Director	<input type="checkbox"/> Primary	M. S. Harris	352/563-4489 M/W 240-4489	352/527-9372 276-0640 (P)* 888/760-7104 (P) 352/422-8602 (C)
		<input type="checkbox"/> Alternate	S. C. Powell	352/563-4883 M/W 240-3172	352/795-1875 276-0678 (P)* 352/422-8936 (C)
		<input type="checkbox"/> Alternate	R. A. Janka	407/475-2400 M/W 280-2400	407/659-3784 or 727/866-6641 888/939-3410 (P) 407/257-3724 (C)
5	Director, Site Operations	<input type="checkbox"/>	J. J. Holden	352/563-4477 M/W 240-3605	352/382-0280 276-0643 (P)* 352/422-8411 (C)
6	Vice President, Crystal River Nuclear Plant	<input type="checkbox"/>	D. E. Young	352/563-4331 M/W 240-3331	352/564-0162 352/422-8605 (C)

\* Access pager by dialing 1-800-280-6493, then follow instructions.



# RADIOLOGICAL EMERGENCY PLANNING DEPARTMENT PROCEDURE

REP-02 Rev. 73

Date 01/22/01

Page 12 of 34

TITLE:

## ACTIVATION AND NOTIFICATION OF THE EMERGENCY OPERATIONS FACILITY ORGANIZATION

### - ATTACHMENT 1 - EOF PERSONNEL DIRECTORY AND NOTIFICATION NETWORK

(Page 3 of 9)

#### EOF FACILITY MANAGER CALL LIST

	<u>Name</u>	<u>Office Number</u>	<u>Home Number</u>
Primary:	J. G. Austin	352/795-0504 M/W 240-6317	352/382-5413 276-0163 (P)* 352/422-8473 (C)
Alternate:	W. E. Gwaltney	352/795-0504 M/W 240-6166	352/746-0359
Alternate:	G. J. Sweeney	352/795-0504 M/W 240-6267	352/527-2380
Alternate:	Vacant		

P = Pager  
C = Cellular Phone

Contact only one individual per emergency position. Check appropriate box for individual contacted.

<u>Priority</u>	<u>Emergency Title</u>	<u>Contacted</u>	<u>Name</u>	<u>Office Number</u>	<u>Home Number</u>
1	EOF Accountability Representative  (Contact a minimum of two individuals.)	<input type="checkbox"/> Primary	F. A. Plummer	352/795-0504 M/W 240-6363	352/521-9925
		<input type="checkbox"/> Alternate	C. R. Dearing	352/795-0504 M/W 240-6174	352/746-0151
		<input type="checkbox"/> Alternate	C. L. Walters	352/795-0504 M/W 240-6109	352/489-1235
		<input type="checkbox"/> Alternate	B. R. Bagwell	352/795-0504 M/W 240-6222	352/563-2598
2	EOF Communicator	<input type="checkbox"/> Primary	J. P. Owen	352/795-0504 M/W 240-6190	352/795-2539 or 795-0344
		<input type="checkbox"/> Alternate	K. E. Hampton	352/795-0504 M/W 240-6282	352/382-5034
		<input type="checkbox"/> Alternate	H. D. Roberts	352/795-0504 M/W 240-6128	352/628-4042
3	EOF Setup/Status Boards**  (Notify all positions for initial setup.)	<input type="checkbox"/> Primary	R. G. Cardinali	352/795-0504 M/W 240-6185	352/726-5267
		<input type="checkbox"/> Alternate	J. C. Elam	352/795-0504 M/W 240-6134	352/795-4784
		<input type="checkbox"/> Alternate	D. W. Savage	352/795-0504 M/W 240-6289	352/489-5043
		<input type="checkbox"/> Alternate	R. L. Rogers	352/795-0504 M/W 240-6342	352/563-5563 276-0493 (P)*
		<input type="checkbox"/> Alternate	L. W. Hensley	352/795-0504 M/W 240-6186	352/726-2302
		<input type="checkbox"/> Alternate	M. A. Grider	352/795-0504 M/W 240-6119	352/795-1254
		<input type="checkbox"/> Alternate	R. W. Armstrong	352/795-0504 M/W 240-6118	352/726-9073 276-0696 (P)*

\*Access pager by dialing 1-800-280-6493, then follow instructions.

\*\*First responsibility is the setup of the EOF. After setup is complete, the EOF Facility Manager will assign personnel for updating the status boards.



# RADIOLOGICAL EMERGENCY PLANNING DEPARTMENT PROCEDURE

REP-02 Rev. 73

Date 01/22/01

Page 13 of 34

TITLE:

ACTIVATION AND NOTIFICATION OF THE  
EMERGENCY OPERATIONS FACILITY ORGANIZATION

- ATTACHMENT 1 -

(Page 4 of 9)

EOF PERSONNEL DIRECTORY AND NOTIFICATION NETWORKASSISTANT EOF DIRECTOR CALL LIST

	<u>Name</u>	<u>Office Number</u>	<u>Home Number</u>
Primary:	K. F. Lancaster	352/563-2943 M/W 240-4040	352/344-0855 276-0691 (P)* 352/422-8931 (C)
Alternate:	R. C. Widell	352/795-6486 M/W 240-4630	352/746-0646 276-0185 (P)* 352/422-8856 (C)
Alternate:	W. J. Pike	352/563-4970 M/W 240-3642	352/527-8853 276-0673 (P)* 352/422-8409 (C)
Alternate:	Vacant		

P = Pager

C = Cellular Phone

Contact only one individual per emergency position unless otherwise indicated. Check appropriate box for individual contacted.

<u>Priority</u>	<u>Emergency Title</u>	<u>Contacted</u>	<u>Name</u>	<u>Office Number</u>	<u>Home Number</u>
1	Administrative Manager	<input type="checkbox"/> Primary	J. M. Anna	352/563-4480 M/W 240-4480	352/795-0067
		<input type="checkbox"/> Alternate	N. J. Hooper	352/422-8431 M/W 240-8431	352/795-9568 276-0627 (P)*
		<input type="checkbox"/> Alternate	M. A. Riley	352/563-4848 M/W 240-4848	352/489-5875
2	EOF State and Local Government Liaison	<input type="checkbox"/> Primary	F. Frando	352/563-4795 M/W 240-3045	352/465-7343
		<input type="checkbox"/> Alternate	L. V. Cecilia	352/563-4546 M/W 240-3190	352/563-0046 276-0714 (P)*
		<input type="checkbox"/> Alternate	P. E. Infanger	352/563-4796 M/W 240-3166	352/873-4863 276-0626 (P)*
3	FPC State EOC Representative	<input type="checkbox"/> Primary	R. M. Bright	352/563-4771 M/W 240-3319	352/447-4708 276-0708 (P)*
		<input type="checkbox"/> Alternate	K. R. Wilson	352/795-6486 M/W 240-3413	352/332-8709 352/422-8933 (C)
4	State and County EOC Communicator	<input type="checkbox"/> Primary	R. G. Surber	352/795-0504 M/W 240-6326	352/795-8014 276-0181 (P)*
		<input type="checkbox"/> Alternate	B. P. Komara	352/563-4679 M/W 240-6140	352/795-3959 276-0682 (P)*
		<input type="checkbox"/> Alternate	Vacant		
5	INPO Duty Officer			800/321-0614	

\* Access pager by dialing 1-800-280-6493, then follow instructions.



# RADIOLOGICAL EMERGENCY PLANNING DEPARTMENT PROCEDURE

REP-02 Rev. 73

Date 01/22/01

Page 14 of 34

TITLE:

ACTIVATION AND NOTIFICATION OF THE  
EMERGENCY OPERATIONS FACILITY ORGANIZATION

- ATTACHMENT 1 -  
EOF PERSONNEL DIRECTORY AND NOTIFICATION NETWORK

(Page 5 of 9)

## EOF TECHNICAL SUPPORT DIRECTOR CALL LIST

	Name	Office Number	Home Number
Primary:	J. A. Ranalli	352/563-4984 M/W 240-3284	352/597-7610 276-0490 (P)* 352/422-8893 (C)
Alternate:	Vacant		
Alternate:	T. E. Williams	352/563-4356 M/W 240-3886	352/795-9097 276-0478 (P)* 352/422-8513 (C)
Alternate:	H. B. Oates	352/563-4789 M/W 240-3777	352/382-4652 276-0174 (P)* 352/422-8414 (C)

P = Pager  
C = Cellular Phone

Positions enclosed by a box are required to declare the EOF operational.  
Contact only one individual per emergency position unless otherwise indicated. Check appropriate box for individual contacted.

Priority	Emergency Title	Contacted	Name	Office Number	Home Number
1	Corporate Health Physicist	<input type="checkbox"/> Primary	S. M. Garry	352/563-4777 M/W 240-3281	352/746-9625 276-0630 (P)* 352/422-8457 (C)
		<input type="checkbox"/> Alternate	A. Kazemfar	352/563-4874 M/W 240-3333	352/795-7988 276-0675 (P)* 352/422-8825 (C)
		<input type="checkbox"/> Alternate	D. A. McCollough	352/563-4386 M/W 240-4386	352/564-9288 276-0690 (P)*
2	EOF Accident Assessment Coordinator	<input type="checkbox"/> Primary	J. G. Smith	352/795-0504 M/W 240-6042	352/795-3827 276-0179 (P)*
		<input type="checkbox"/> Alternate	J. L. Springer	352/795-6486 M/W 240-3452	352/795-7508 276-0479 (P)*
		<input type="checkbox"/> Alternate	C. M. Crosten	352/795-0504 M/W 240-6191	352/795-8020

\* Access pager by dialing 1-800-280-6493, then follow instructions.





# RADIOLOGICAL EMERGENCY PLANNING DEPARTMENT PROCEDURE

REP-02 Rev. 73

Date 01/22/01

Page 15 of 34

TITLE:

ACTIVATION AND NOTIFICATION OF THE  
EMERGENCY OPERATIONS FACILITY ORGANIZATION- ATTACHMENT 1 -  
EOF PERSONNEL DIRECTORY AND NOTIFICATION NETWORK

(Page 6 of 9)

CORPORATE HEALTH PHYSICIST CALL LIST

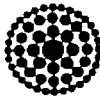
	<u>Name</u>	<u>Office Number</u>	<u>Home Number</u>
Primary:	S. M. Garry	352/563-4777 M/W 240-3281	352/746-9625 276-0630 (P)* 352/422-8457 (C)
Alternate:	A. Kazemfar	352/563-4874 M/W 240-3333	352/795-7988 276-0675 (P)* 352/422-8825 (C)
Alternate:	D. A. McCollough	352/563-4386 M/W 240-4386	352/564-9288 276-0690 (P)*

P = Pager  
C = Cellular Phone

Contact only one individual per emergency position unless otherwise indicated. Check appropriate box for individual contacted.

<u>Priority</u>	<u>Emergency Title</u>	<u>Contacted</u>	<u>Name</u>	<u>Office Number</u>	<u>Home Number</u>
1	EOF Dose Assessment Member  (Contact a minimum of three individuals for this position.)	<input type="checkbox"/> Primary	P. F. Ezzell	352/563-4778 M/W 240-3624	352/795-6114 276-0620 (P)*
		<input type="checkbox"/> Alternate	Vacant		
		<input type="checkbox"/> Alternate	Vacant		
		<input type="checkbox"/> Alternate	J. D. Gilbert	352/563-2943 M/W 240-3173	352/382-4331 276-0631 (P)* 352/422-8469 (C)
		<input type="checkbox"/> Alternate	S. D. Brown	352/795-0504 M/W 240-6327	352/527-9374 276-0165 (P)*
		<input type="checkbox"/> Alternate	M. Y. Adams	352/795-0504 M/W 240-6162	352/746-3063
2	FPC Field Team Liaison	<input type="checkbox"/> Primary	D. J. Bourscheid	352/795-0504 M/W 240-6135	352/795-3996
		<input type="checkbox"/> Alternate	S. D. Mansfield	352/795-0504 M/W 240-6172	352/795-0532 276-0677 (P)*
		<input type="checkbox"/> Alternate	Member of TSC Radiation Monitoring Team		

\* Access pager by dialing 1-800-280-6493, then follow instructions.



**Florida  
Power  
CORPORATION**

# RADIOLOGICAL EMERGENCY PLANNING DEPARTMENT PROCEDURE

REP-02 Rev. 73

Date 01/22/01

Page 16 of 34

**TITLE:**

**ACTIVATION AND NOTIFICATION OF THE  
EMERGENCY OPERATIONS FACILITY ORGANIZATION**

**- ATTACHMENT 1 -  
EOF PERSONNEL DIRECTORY AND NOTIFICATION NETWORK**

(Page 7 of 9)

**EOF ACCIDENT ASSESSMENT COORDINATOR CALL LIST**

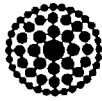
	<u>Name</u>	<u>Office Number</u>	<u>Home Number</u>
Primary:	J. G. Smith	352/795-0504 M/W 240-6042	352/795-3827 276-0179 (P)*
Alternate:	J. L. Springer	352/795-6486 M/W 240-3452	352/795-7508 276-0479 (P)*
Alternate:	C. M. Crosten	352/795-0504 M/W 240-6191	352/795-8020

P = Pager  
C = Cellular Phone

Contact only one individual per emergency position. Check appropriate box for individual contacted.

<u>Priority</u>	<u>Emergency Title</u>	<u>Contacted</u>	<u>Name</u>	<u>Office Number</u>	<u>Home Number</u>
1	EOF Accident Assessment Operations Representative	<input type="checkbox"/> Primary	M. P. Holmes	352/795-0504 M/W 240-6254	352/795-1713 276-0184 (P)*
		<input type="checkbox"/> Alternate	A. T. Kennedy	352/795-0504 M/W 240-6129	352/563-1739 276-0184 (P)*
		<input type="checkbox"/> Alternate	M. Gallian	352/795-0504 M/W 240-6290	352/795-9044 276-0184 (P)*
		<input type="checkbox"/> Alternate	Vacant		
		<input type="checkbox"/> Alternate	D. E. Smith	352/795-0504 M/W 240-6253	352/795-8009 276-0184 (P)*
2	EOF Accident Assessment Engineer	<input type="checkbox"/> Primary	T. V. Austin	352/563-4515 M/W 240-3046	352/795-7265 276-0718 (P)* 352/422-8783 (C)
		<input type="checkbox"/> Alternate	J. L. O'Brian	352/795-6486 M/W 240-3832	352/344-4003 276-0686 (P)* 352/422-8813 (C)
		<input type="checkbox"/> Alternate	Vacant		
		<input type="checkbox"/> Alternate	S. K. Balliet	352/563-4508 M/W 240-3394	352/564-1795 276-0699 (P)*
		<input type="checkbox"/> Alternate	J. S. Endsley	352/563-4866 M/W 240-3070	352/795-5382 276-0636 (P)*
		<input type="checkbox"/> Alternate	R. Iwachow	352/795-6486 M/W 240-3562	352/746-4865 276-0624 (P)* 352/422-8471 (C)
3	EOF Risk Analysis Representative	<input type="checkbox"/> Primary	D. N. Miskiewicz	352/795-6486 M/W 240-3019	352/746-0685 276-0517 (P)*
		<input type="checkbox"/> Alternate	J. R. Weaver	352/795-6486 M/W 240-3315	352/795-8924
		<input type="checkbox"/> Alternate	L. W. Harris	352/795-6486 M/W 240-3705	352/489-3197 276-0621 (P)*

\* Access pager by dialing 1-800-280-6493, then follow instructions.



**Florida  
Power**  
CORPORATION

# RADIOLOGICAL EMERGENCY PLANNING DEPARTMENT PROCEDURE

REP-02 Rev. 73

Date 01/22/01

Page 17 of 34

**TITLE:**

**ACTIVATION AND NOTIFICATION OF THE  
EMERGENCY OPERATIONS FACILITY ORGANIZATION**

- ATTACHMENT 1 -  
EOF PERSONNEL DIRECTORY AND NOTIFICATION NETWORK

(Page 8 of 9)

## ADMINISTRATIVE MANAGER CALL LIST

	<u>Name</u>	<u>Office Number</u>	<u>Home Number</u>
Primary:	J. M. Anna	352/563-4480 M/W 240-4480	352/795-0067
Alternate:	N. J. Hooper	352/422-8431 M/W 240-8431	352/795-9568 276-0627 (P)*
Alternate:	M. A. Riley	352/563-4848 M/W 240-4848	352/489-5875

P = Pager  
C = Cellular Phone

Contact only one individual per emergency position. Check appropriate box for individual contacted.

<u>Priority</u>	<u>Emergency Title</u>	<u>Contacted</u>	<u>Name</u>	<u>Office Number</u>	<u>Home Number</u>
1	Corporate Security Specialist	<input type="checkbox"/> Primary	D. H. Harrelson	352/563-4376 M/W 240-4376	352/637-1061 276-1739 (P)* 352/422-3475 (C)
		<input type="checkbox"/> Alternate	Vacant		
		<input type="checkbox"/> Alternate	On-Duty Captain	M/W 240-4307	
2	Materials Manager	<input type="checkbox"/> Primary	R. J. Slotke	352/563-4715 M/W 240-4715	352/795-6346 276-0488 (P)* 352/422-8421 (C)
		<input type="checkbox"/> Alternate	G. A. Christie	352/563-4329 M/W 240-4329	352/795-2414 276-0707 (P)*
		<input type="checkbox"/> Alternate	M. I. Ruether	352/563-4342 M/W 240-4342	352/382-4341

\* Access pager by dialing 1-800-280-6493, then follow instructions.



# RADIOLOGICAL EMERGENCY PLANNING DEPARTMENT PROCEDURE

REP-02 Rev. 73

Date 01/22/01

Page 18 of 34

TITLE:

ACTIVATION AND NOTIFICATION OF THE  
EMERGENCY OPERATIONS FACILITY ORGANIZATION

- ATTACHMENT 1 -  
EOF PERSONNEL DIRECTORY AND NOTIFICATION NETWORK

(Page 9 of 9)

## EOF STATE AND LOCAL GOVERNMENT LIAISON CALL LIST

	Name	Office Number	Home Number
Primary:	F. Frando	352/563-4795 M/W 240-3045	352/465-7343
Alternate:	L. V. Cecilia	352/563-4546 M/W 240-3190	352/563-0046 276-0714 (P)*
Alternate:	P. E. Infanger	352/563-4796 M/W 240-3166	352/873-4863 276-0626 (P)*

P = Pager  
C = Cellular Phone

Contact only one individual per emergency position. Check appropriate box for individual contacted.

Priority	Emergency Title	Contacted	Name	Office Number	Home Number
1	EOF NRC Liaison	<input type="checkbox"/> Primary	P. M. Peterson	352/795-6486 M/W 240-3602	352/382-0342 276-0671 (P)*
		<input type="checkbox"/> Alternate	J. L. Lind	352/795-6486 M/W 240-3328	352/795-2865 276-0471 (P)*
		<input type="checkbox"/> Alternate	Vacant		
2	FPC Citrus County EOC Representative	<input type="checkbox"/> Primary	M. R. Casada	352/795-6486 M/W 240-3354	352/726-2317
		<input type="checkbox"/> Alternate	G. W. Wilson	352/795-6486 M/W 240-3850	352/746-3174 276-0469 (P)*
3	FPC Levy County EOC Representative	<input type="checkbox"/> Primary	M. E. Collins	352/795-6486 M/W 240-3648	352/331-6559
		<input type="checkbox"/> Alternate	L. R. McDougal	352/563-4988 M/W 240-3988	352/375-7033 276-0670 (P)* 352/422-8598 (C)

\* Access pager by dialing 1-800-280-6493, then follow instructions.



# RADIOLOGICAL EMERGENCY PLANNING DEPARTMENT PROCEDURE

REP-02 Rev. 73

Date 01/22/01

Page 19 of 34

TITLE:

ACTIVATION AND NOTIFICATION OF THE  
EMERGENCY OPERATIONS FACILITY ORGANIZATION

- ATTACHMENT 2 -

## FACILITY DIRECTORY

### Facility

### Location

### Telephone

EOF and ENC

Nuclear Operations  
Training Facility  
Crystal River, FL

352/795-0504

### **FPC Business Offices:**

Dunnellon, FL

352/465-2334  
M/W 220-6550

Inverness, FL

M/W 220-6604  
(no outside line)

Crystal River, FL

352/795-9791  
M/W 240-6307

TSC/OSC

CR-3 Nuclear Plant  
Crystal River, FL

Refer to Emergency  
Facility Telephone  
Book.



# RADIOLOGICAL EMERGENCY PLANNING DEPARTMENT PROCEDURE

REP-02 Rev. 73

Date 01/22/01

Page 20 of 34

TITLE:

ACTIVATION AND NOTIFICATION OF THE  
EMERGENCY OPERATIONS FACILITY ORGANIZATION

- ATTACHMENT 3 -

(Page 1 of 10)

OFF-SITE ORGANIZATIONS COMMUNICATIONS CONTACTS

SERVICE	NAME/CONTACT	TELEPHONE	FPC CONTACT(S)
AMBULANCE SERVICE (Non-Radiological and Radiological)	Florida Regional Emergency Medical Services 110 N. Apopka Ave. Inverness, FL	9-1-1	
BABCOCK & WILCOX (B&W) (See FRAMATOME TECHNOLOGIES.)			
COUNTY EMERGENCY MANAGEMENT/DISASTER PREPAREDNESS			
CITRUS COUNTY	James T. Soukup  FPC Representative at Citrus EOC	352/726-4488, X277 352/746-6555 (24 hrs.) 352/344-8779 (H) 352/898-5926 (P) 352/422-4392 (C)  352/527-2407	EOF State and Local Government Liaison
LEVY COUNTY	Paula E. Lane  FPC Representative at Levy EOC	352/486-5213 352/493-9593 (H) 352/215-0085 (C) 800/241-4653 (P) (274-5552)  352/486-5428	EOF State and Local Government Liaison



**Florida  
Power  
CORPORATION**

# **RADIOLOGICAL EMERGENCY PLANNING DEPARTMENT PROCEDURE**

REP-02 Rev. 73

Date 01/22/01

Page 21 of 34

**TITLE:**

**ACTIVATION AND NOTIFICATION OF THE  
EMERGENCY OPERATIONS FACILITY ORGANIZATION**

**- ATTACHMENT 3 -**

**(Page 2 of 10)**

## **OFF-SITE ORGANIZATIONS COMMUNICATIONS CONTACTS**

<b>SERVICE</b>	<b>NAME/CONTACT</b>	<b>TELEPHONE</b>	<b>FPC CONTACT(S)</b>
<b>DOE (U.S. DEPARTMENT OF ENERGY)</b>			
<b>REAC/TS, OAK RIDGE ASSOCIATED UNIVERSITIES (ORAU)</b>	<b>Dr. Robert C. Ricks</b>	<b>865/576-3131 (8 a.m. - 4:30 p.m.) 865/576-1005 (24 hr./emergency)</b>	
<b>OAK RIDGE NATIONAL LABORATORIES (ORNL)</b>	<b>Dr. Lee R. Riciputi</b>	<b>865/574-2449</b>	
<b>DOE RADIOLOGICAL ASSISTANCE PROGRAM (RAP)</b>		<b>865/576-1005 865/525-7885</b>	
<b>E</b>			
<b>ELECTRIC POWER RESEARCH INSTITUTE (EPRI) (California)</b>	<b>Theodore Marston</b>	<b>650/855-2000 650/855-2321 (EPRI Security)</b>	
<b>NUCLEAR SAFETY DEPT. OF NUCLEAR POWER DIVISION OF EPRI</b>		<b>650/855-2997</b>	
<b>U.S. ENVIRONMENTAL PROTECTION AGENCY, REGION IV (EPA)</b>		<b>404/562-8700 (24 hr. emergency response)</b>	<b>Assistant EOF Director</b>
<b>EMERGENCY EQUIPMENT REPAIR</b>			
<b>RADIOLOGICAL MONITORING EQUIPMENT</b>	<b>Don G. Price, Jr. Southeastern Atomic Labs (Gainesville, FL)</b>	<b>352/372-9716 (W)</b>	
<b>F</b>			
<b>FEDERAL EMERGENCY MANAGEMENT AGENCY, REGION IV (FEMA) (Atlanta, GA)</b>		<b>770/220-5200 (24 hr. service)</b>	<b>EOF Director</b>



# RADIOLOGICAL EMERGENCY PLANNING DEPARTMENT PROCEDURE

REP-02 Rev. 73

Date 01/22/01

Page 22 of 34

TITLE:

ACTIVATION AND NOTIFICATION OF THE  
EMERGENCY OPERATIONS FACILITY ORGANIZATION

- ATTACHMENT 3 -

(Page 3 of 10)

OFF-SITE ORGANIZATIONS COMMUNICATIONS CONTACTS

SERVICE	NAME/CONTACT	TELEPHONE	EOF CONTACT(S)
FPC SUPPORT**			
CLAIMS	Richard L. Anderson	Office: 727/826-4392 M/W 230-4392  Pager: 276-2491*  Home: 727/391-8969	
	Tom E. Moorhouse	Office: 727/826-4300 M/W 230-4300  Home: 727/443-5500	
COMPUTER SERVICES SUPPORT (Information Technology)	Karen E. Kirkland	Office: 352/563-4628 M/W 240-4628  Pager: 276-1429*  Cell: 352/422-8435  Home: 352/621-0462	
	Jack R. Wagner	Office: 352/563-4322 M/W 240-4322  Pager: 276-0293*  Cell: 352/422-8437  Home: 352/382-0523	
EMPLOYEE INFORMATION (FPC) (Human Resources Systems Request)	Marilyn C. Marra	Office: 727/820-5795 M/W 230-5795  Home: 727/319-4161	
	Ray A. Edmonds, Jr.	Office: 352/795-0504 M/W 240-6376  Pager: 276-2125*  Home: 352/795-0380	

\* Access pager by dialing 1-800-280-6493, then follow instructions.

\*\* The individuals in this category are contact points for support and do not necessarily respond to the EOF.





# RADIOLOGICAL EMERGENCY PLANNING DEPARTMENT PROCEDURE

REP-02 Rev. 73

Date 01/22/01

Page 23 of 34

TITLE:

ACTIVATION AND NOTIFICATION OF THE  
EMERGENCY OPERATIONS FACILITY ORGANIZATION

- ATTACHMENT 3 -

(Page 4 of 10)

OFF-SITE ORGANIZATIONS COMMUNICATIONS CONTACTS

SERVICE	NAME/CONTACT	TELEPHONE	EOF CONTACT(S)
FPC SUPPORT** (Cont'd)			
FINANCE/ ACCOUNTING	Phil Yee	Office: 727/820-5331 M/W 230-5331  Home: 727/578-0862	
LABOR (Supplemental Labor Resources)	Susan I. McDonald	Office: 352/563-4702 M/W 240-5202  Home: 352/344-9126	
LEGAL	Rodney E. Gaddy	Office: 727/820-5098 M/W 230-5098  Home: 813/855-8438	
RISK MANAGEMENT (Raleigh, NC)	Gary Y. Little	Office: 919/546-6802 M/W 7-770-6802  Home: 919/266-4906	
	Barbara K. Hart	Office: 919/546-6807 M/W 7-770-6807  Home: 919/571-9036	

\* Access pager by dialing 1-800-280-6493, then follow instructions.

\*\* The individuals in this category are contact points for support and do not necessarily respond to the EOF.



# RADIOLOGICAL EMERGENCY PLANNING DEPARTMENT PROCEDURE

REP-02 Rev. 73

Date 01/22/01

Page 24 of 34

TITLE:

ACTIVATION AND NOTIFICATION OF THE  
EMERGENCY OPERATIONS FACILITY ORGANIZATION

- ATTACHMENT 3 -  
OFF-SITE ORGANIZATIONS COMMUNICATIONS CONTACTS

(Page 5 of 10)

SERVICE	NAME/CONTACT	TELEPHONE	EOF CONTACT(S)
FPC SUPPORT** (Cont'd)			
SIMULATOR SUPPORT	R. Dave deMontfort	Office: 352/563-4948 M/W 240-6248 Pager: 276-0642* Cell: 352/563-8220  Home: 352/795-9693	
	Don E. Smith	Office: 352/795-0504 M/W 240-6253  Home: 352/795-8009	
TELECOMMUNICATIONS (Information Technology Support)	F. Jon Cembruch	Office: 352/795-6844 M/W 240-6207 Pager: 276-2999* Cell: 352/422-8406  Home: 904/454-1226	
	Donna L. Davis	Office: 352/563-4997 M/W 240-6879 Pager: 276-2376*  Home: 352/621-9737	
TRANSPORTATION	F. Jay Wooldridge	Office: 727/893-9721 M/W 220-3721 Pager: 276-1238*  Home: 727/544-4182	
	Gail F. Phifer (Mr.)	Office: 727/893-9382 M/W 220-3382 Pager: 276-1248*  Home: 727/381-4126	

\* Access pager by dialing 1-800-280-6493, then follow instructions.

\*\* The individuals in this category are contact points for support and do not necessarily respond to the EOF.



**Florida  
Power  
CORPORATION**

# **RADIOLOGICAL EMERGENCY PLANNING DEPARTMENT PROCEDURE**

REP-02 Rev. 73

Date 01/22/01

Page 25 of 34

**TITLE: ACTIVATION AND NOTIFICATION OF THE  
EMERGENCY OPERATIONS FACILITY ORGANIZATION**

**- ATTACHMENT 3 -  
OFF-SITE ORGANIZATIONS COMMUNICATIONS CONTACTS**

**(Page 6 of 10)**

SERVICE	NAME/CONTACT	TELEPHONE	EOF CONTACT(S)
<b>FRAMATOME TECHNOLOGIES (formerly Babcock &amp; Wilcox)</b>			
<b>FRAMATOME TECHNOLOGIES</b>	Framatome Technologies	804/832-3000 or -3001 (switchboard - 24 hrs.)	EOF Accident Assessment Coordinator
<b>FRAMATOME TECHNOLOGIES CUSTOMER SERVICE MANAGER</b>	John M. Helmey	804/832-3359 (W) 804/525-0583 (H)	
<b>GILBERT ASSOCIATES, INC. (See Parsons Power.)</b>			
<b>HOSPITALS NON-RADIOLOGICAL OR RADIOLOGICAL INJURIES:</b>			
<b>SEVEN RIVERS COMMUNITY HOSPITAL</b>		352/795-6560 352/795-8335 (Emergency Room)	
<b>CITRUS MEMORIAL HOSPITAL</b>		352/726-1551 352/344-6569 (Emergency Room)	
<b>I</b>			
<b>AMERICAN NUCLEAR INSURERS (ANI) (Property Damage and Fire Protection Impairments)</b>		860/561-3433	
<b>NUCLEAR ELECTRIC INSURANCE LIMITED (NEIL)</b>		302/888-3000 FAX: 302/888-3095	
<b>INSTITUTE OF NUCLEAR POWER OPERATIONS (INPO)</b>	INPO Duty Officer Emergency Response Center	800/321-0614  770/644-8000 (switchboard)  <b>TELECOPY:</b> (PRI) 770/644-8549 (ALT) 770/644-8567	EOF Director/ Communications Director

\* Access pager by dialing 1-800-280-6493, then follow instructions.



# RADIOLOGICAL EMERGENCY PLANNING DEPARTMENT PROCEDURE

REP-02 Rev. 73

Date 01/22/01

Page 26 of 34

TITLE:

ACTIVATION AND NOTIFICATION OF THE  
EMERGENCY OPERATIONS FACILITY ORGANIZATION

- ATTACHMENT 3 -

(Page 7 of 10)

OFF-SITE ORGANIZATIONS COMMUNICATIONS CONTACTS

SERVICE	NAME/CONTACT	TELEPHONE	FPC CONTACT(S)
LAW ENFORCEMENT AGENCIES			
CITRUS COUNTY SHERIFF	Sheriff Jeffrey J. Dawsy	352/726-4488 9-1-1	EOF Security Representative
FLORIDA HIGHWAY PATROL	Brooksville, FL	352/754-6767 (800/500-1240)	
	Gainesville, FL	352/955-2150	
FLORIDA MARINE PATROL		352/447-1633 (8 a.m. - 5 p.m.)  800/342-5367 (Tampa/after hours)	
LEVY COUNTY SHERIFF	Sheriff Johnny Smith	352/486-5111 800/538-9767	
NGRC (NUCLEAR GENERAL REVIEW COMMITTEE) (discontinued due to CPL/FPC merger)			
NRC (U.S. NUCLEAR REGULATORY COMMISSION)			
OFFICE OF NUCLEAR REACTOR REGULATION (NRR)	Project Manager John M. Goshen	301/415-1437 (W)	EOF Director
REGION II OFFICE OF INSPECTION AND ENFORCEMENT	Luis A. Reyes	404/562-4410 (W)	EOF Director



# RADIOLOGICAL EMERGENCY PLANNING DEPARTMENT PROCEDURE

REP-02 Rev. 73

Date 01/22/01

Page 27 of 34

TITLE:

ACTIVATION AND NOTIFICATION OF THE  
EMERGENCY OPERATIONS FACILITY ORGANIZATION

- ATTACHMENT 3 -

(Page 8 of 10)

OFF-SITE ORGANIZATIONS COMMUNICATIONS CONTACTS

SERVICE	NAME/CONTACT	TELEPHONE	FPC CONTACT(S)
NRC (U.S. NUCLEAR REGULATORY COMMISSION) (Cont'd)			
CR-3 RESIDENT INSPECTOR	J. "Scott" Stewart  Steven P. Sanchez	352/795-7677 (W) 352/795-7678 (W)  352/527-9474 (H) 276-0681 (P)*  352/338-7571 (H) 276-0486 (P)*	EOF Director
OPERATIONS RESPONSE CENTER (Rockville, MD)		301/816-5100 301/951-0550	EOF Director
REACTOR PROJECTS (REGION II) (Atlanta, GA)	Loren R. Plisco	404/562-4501 770/780-4164 (P)	EOF Director
NRC REGION II HEADQUARTERS (Atlanta, GA)		404/562-4400	EOF Director
NRC REGION II FACSIMILE (Atlanta, GA)		404/562-4900 404/562-4901	
NRC OPERATIONS CENTER FACSIMILE (Rockville, MD)		301/816-5151	
PUBLIC INFORMATION OFFICE (Atlanta, GA)	Ken M. Clark  Roger D. Hannah	404/562-4416 404/562-4980 (FAX)  404/562-4417	Corporate Communications Director
NRC OPERATIONS CENTER (Rockville, MD)	Emergency Notification System (ENS)	(1) 301/816-5100 (2) 301/951-0550 (3) 301/415-0553	EOF Director
NRC OPERATIONS CENTER (Rockville, MD)	Health Physics Network (HPN)	(1) 301/816-5100 (2) 301/951-0550	EOF Director
NRC OPERATIONS CENTER (Rockville, MD)	NRC Operator	301/415-7000	EOF Director

\* Access pager by dialing 1-800-280-6493, then follow instructions.



**Florida  
Power**  
CORPORATION

# RADIOLOGICAL EMERGENCY PLANNING DEPARTMENT PROCEDURE

REP-02 Rev. 73

Date 01/22/01

Page 28 of 34

**TITLE:**

**ACTIVATION AND NOTIFICATION OF THE  
EMERGENCY OPERATIONS FACILITY ORGANIZATION**

- ATTACHMENT 3 -

(Page 9 of 10)

## OFF-SITE ORGANIZATIONS COMMUNICATIONS CONTACTS

SERVICE	NAME/CONTACT	TELEPHONE	FPG CONTACT(S)
<b>OFF-SITE MONITORING</b>			
<b>HYDROLOGIC:</b>  SOUTHWEST FLORIDA WATER MANAGEMENT DISTRICT (Brooksville, FL)		352/796-7211 352/796-1211 (after hours)	
<b>METEOROLOGICAL:</b>  FAA FLIGHT SERVICE STATION (Gainesville, FL)  (St. Petersburg, FL)  TAMPA WEATHER SERVICE (Ruskin, FL)	Flight Service Station  Flight Service Station  Meteorologist Recorded Info. Emergency Only	800/992-7433 352/371-9702  727/536-6290 — Shift Supv. 727/536-6980 — 727/539-7491 (M-F only)  813/645-2323 813/645-2506 813/645-4111 (24 hrs.)	
<b>SEISMIC:</b>  U.S. GEOLOGICAL SURVEY (Menlo Park, CA) (Golden, CO)  UNIVERSITY OF FLORIDA DEPT. OF GEOLOGY	Dr. Douglas Smith	650/853-8300 303/273-8500  352/392-6766 (Office) 352/392-2231 (Dept.)	
<b>PARSONS POWER (formerly Gilbert Associates, Inc.)</b>			
PARSONS POWER	Robert E. Vaughn	610/855-2000, X2061 or 610/855-2061 (direct)	EOF Accident Assessment Coordinator



# RADIOLOGICAL EMERGENCY PLANNING DEPARTMENT PROCEDURE

REP-02 Rev. 73

Date 01/22/01

Page 29 of 34

TITLE:

ACTIVATION AND NOTIFICATION OF THE  
EMERGENCY OPERATIONS FACILITY ORGANIZATION

- ATTACHMENT 3 -  
OFF-SITE ORGANIZATIONS COMMUNICATIONS CONTACTS

(Page 10 of 10)

SERVICE	NAME/CONTACT	TELEPHONE	FPC CONTACT(S)
STATE AGENCIES			
DEPT. OF HEALTH (DOH), BUREAU OF RADIATION CONTROL (Orlando, FL)	Harlan W. Keaton	407/297-2095 (W) 863/439-2686 (H)	Assistant EOF Director
	Jearold C. Eakins	407/297-2095 (W) 407/880-2697 (H)	
	John A. Williamson	407/297-2095 (W) 407/389-0213 (H)	
DEPT. OF HEALTH (DOH), BUREAU OF RADIATION CONTROL (Cont'd) (Orlando, FL)	DOH Mobile Lab (MERL) at EOF  DOH Mobile Lab (MERL) at FPC Substation	352/795-9509  352/795-1716	EOF Director
STATE WARNING POINT (Tallahassee, FL)	State Duty Warning Officer	850/413-9911 800/320-0519 850/413-9910 850/488-7841 (FAX)	
UTILITIES			
FLORIDA POWER & LIGHT CO. (System Power Coordinator)	System Operator	305/442-5744 (24 hr. service)  305/442-5742 (interchange desk)  305/442-5743 (generation desk)	Assistant EOF Director
FLORIDA POWER CORPORATION (CR-3 Control Room)	Nuclear Shift Manager (NSM)	352/795-6958 877/563-4940 352/422-8898 (C)	
NUCLEAR ENERGY INSTITUTE (NEI)		202/739-8000 202/785-4019 (FAX)	Corporate Communications Director
UNITED TELEPHONE OF FLORIDA	Bonnie K. Stout	352/368-8706  For emergencies, after 5 p.m., weekends, and holidays, dial 611 (repair service).	Assistant EOF Director

Date: \_\_\_\_\_

- ATTACHMENT 4 -

(Page 1 of 5)

EOF ACCOUNTABILITY/FITNESS-FOR-DUTY (FFD) LOG FOR FPC PERSONNEL								
PRINTED NAME	EMERGENCY TITLE	BADGE NO.	TIME IN	TIME OUT	FFD*		SIGNATURE	AUTH.**
					YES	NO		
Adams, M. Y.	EOF Dose Assessment Member							
Anna, J. M.	Administrative Manager							
Armstrong, R. W.	EOF Setup/Status Boards							
Austin, J. G.	EOF Facility Manager							
Austin, T. V.	EOF Accident Assess. Engr.							
Bagwell, B. R.	EOF Accountability Rep.							
Balliet, S. K.	EOF Accident Assess. Engr.							
Bernhoft, S. L.	EOF Director							
Bourscheid, D. J.	FPC Field Team Liaison							
Bright, R. M.	FPC State EOC Rep.							
Brown, S. D.	EOF Dose Assessment Member							
Cardinali, R. G.	EOF Setup/Status Boards							
Casada, M. R.	FPC Citrus Co. EOC Rep.							
Cecilia, L. V.	EOF State & Local Govt. Liaison							
Christie, G. A.	Materials Manager							
Collins, M. E.	FPC Levy Co. EOC Rep.							

\* An emergency responder is considered "fit-for-duty" if they have not consumed any alcohol during the pre-duty 5 hour abstinence period. If YES (fit-for-duty), access may be granted. If NO (not fit-for-duty), the EOF Accountability Representative should notify the EOF Director and instruct the individual to report to the area designated by the EOF Director and stand by for further instructions.

\*\* The EOF Director may approve an individual who has not met the 5 hour abstinence period requirement to staff an emergency position provided a determination of fitness-for-duty is made. This may be accomplished by breath analysis. In addition, a responsible supervisor shall interview the employee to further ascertain fitness-for-duty. If the individual is fit-for-duty, no further authorization is required.



Date: \_\_\_\_\_

- ATTACHMENT 4 (Cont'd) -

(Page 2 of 5)

EOF ACCOUNTABILITY/FITNESS-FOR-DUTY (FFD) LOG FOR FPC PERSONNEL								
PRINTED NAME	EMERGENCY TITLE	BADGE NO.	TIME IN	TIME OUT	FFD*		SIGNATURE	AUTH.**
					YES	NO		
Crosten, C. M.	EOF Acc. Assess. Coord.							
Davis, R. W.	EOF Director							
Dearing, C. R.	EOF Accountability Rep.							
Elam, J. C.	EOF Setup/Status Boards							
Endsley, J. S.	EOF Accident Assess. Engr.							
Ezzell, P. F.	EOF Dose Assessment Member							
Frando, F.	EOF State & Local Govt. Liaison							
Gallian, M.	EOF Acc. Assess. Ops. Rep.							
Garry, S. M.	Corporate Health Physicist							
Gilbert, J. D.	EOF Dose Assessment Member							
Grider, M. A.	EOF Setup/Status Boards							
Gwaltney, W. E.	EOF Facility Manager							
Hampton, K. E.	EOF Communicator							
Harrelson, D. H.	Corporate Security Spec.							
Harris, L. W.	EOF Risk Analysis Rep.							
Harris, M. S.	Communications Director							
Hensley, L. W.	EOF Setup/Status Boards							
Holden, J. J.	Director, Site Operations							
Holmes, M. P.	EOF Acc. Assess. Ops. Rep.							

Date: \_\_\_\_\_

- ATTACHMENT 4 (Cont'd) -

(Page 3 of 5)

EOF ACCOUNTABILITY/FITNESS-FOR-DUTY (FFD) LOG FOR FPC PERSONNEL								
PRINTED NAME	EMERGENCY TITLE	BADGE NO.	TIME IN	TIME OUT	FFD*		SIGNATURE	AUTH.**
					YES	NO		
Hooper, N. J.	Administrative Manager							
Infanger, P. E.	EOF State & Local Govt. Liaison							
Iwachow, R.	EOF Accident Assess. Engr.							
Janka, R. A.	Communications Director							
Johnson, S. G.	EOF Director							
Kazemfar, A.	Corporate Health Physicist							
Kennedy, A. T.	EOF Acc. Assess. Ops. Rep.							
Komara, B. P.	State and County EOC Communicator							
Lancaster, K. F.	Asst. EOF Director							
Lind, J. L.	EOF NRC Liaison							
Mansfield, S. D.	FPC Field Team Liaison							
McCollough, D. A.	Corporate Health Physicist							
McDougal, L. R.	FPC Levy Co. EOC Rep.							
Miskiewicz, D. N.	EOF Risk Analysis Rep.							
Oates, H. B.	EOF Tech. Support Director							
O'Brian, J. L.	EOF Accident Assess. Engr.							
Owen, J. P.	EOF Communicator							
Peterson, P. M.	EOF NRC Liaison							

Date: \_\_\_\_\_

- ATTACHMENT 4 (Cont'd) -

(Page 4 of 5)

EOF ACCOUNTABILITY/FITNESS-FOR-DUTY (FFD) LOG FOR FPC PERSONNEL								
PRINTED NAME	EMERGENCY TITLE	BADGE NO.	TIME IN	TIME OUT	FFD*		SIGNATURE	AUTH.**
					YES	NO		
Pike, W. J.	Asst. EOF Director							
Plummer, F. A.	EOF Accountability Rep.							
Powell, S. C.	Communications Director							
Ranalli, J. A.	EOF Tech. Support Director							
Riley, M. A.	Administrative Manager							
Roberts, H. D.	EOF Communicator							
Rogers, R. L.	EOF Setup/Status Boards							
Ruether, M. I.	Materials Manager							
Savage, D. W.	EOF Setup/Status Boards							
Slottke, R. J.	Materials Manager							
Smith, D. E.	EOF Acc. Assess. Ops. Rep.							
Smith, J. G.	EOF Accident Assess. Coord.							
Springer, J. L.	EOF Accident Assess. Coord.							
Surber, R. G.	State and County EOC Communicator							
Sweeney, G. J.	EOF Facility Manager							
Terry, J. H.	EOF Director							
Walters, C. L.	EOF Accountability Rep.							
Weaver, J. R.	EOF Risk Analysis Rep.							
Widell, R. C.	Asst. EOF Director							

(Page 5 of 5)

Page 34 REP-02 Date 01/22/01 Rev. 73 (last page)