



Stone & Webster

FOUNDED
1889

ATLANTA, GA
BOSTON, MA
CHATTANOOGA, TN
CHERRY HILL, NJ
DENVER, CO
HOUSTON, TX
NEW YORK, NY
WASHINGTON, DC
MIAMI, FL
PLEASANTON, CA

ABU DHABI, UAE
AL KHOBAR, SAUDI ARABIA
BANGKOK, THAILAND
DAMMAM, SAUDI ARABIA
KUALA LUMPUR, MALAYSIA
KUWAIT CITY, KUWAIT
MILTON KEYNES, ENGLAND
JAKARTA, INDONESIA
SEOUL, KOREA
TORONTO, CANADA

72-22

Mr. Mark Delligatti
Project Manager
Spent Fuel Project Office
U.S. Nuclear Regulatory Commission
11555 Rockville Pike
Rockville, MD 20852

October 30, 1997

J. O. No. 05996.02
Letter No. S-O-02
File No. M1.1, R9.5A

DOCKET NO. 72-22 (TAC #L22462) CALCULATION PACKAGE
PRIVATE FUEL STORAGE FACILITY
PRIVATE FUEL STORAGE L.L.C.

Attached please find 3 copies of replacement page 41 of Calculation 05996.01-G(B)-02-1 (No. 8 in Volume 1). The 11" x 17" page had been inadvertently copied to an 8 1/2" x 11" sheet of paper. Please discard the original page and replace it with this one.

Please call me at (303) 741-7009 if you have any questions.

John L. Donnell
Project Manager

Copy: J.D. Parkyn-1/0
S.D. Northard-1/1
J.E. Silberg-1/1
D Chancellor-1/1
L. Bear-1/1

JLD:SMM

9802230310 971030
PDR ADOCK 07200022
C PDR



Stone & Webster Engineering Corporation
7677 East Berry Avenue, Englewood, Colorado 80111-2137
Tel: 303-741-7700 Fax: 303-741-7670
Telex: 289251 303-741-7671

Address all correspondence to P.O. Box 5406, Denver, Colorado 80217-5406

1/1

NF06

DISCIPLINE	CALCULATION NO.	OPTIONAL TASK CODE
GR(B)	02	N/A
J.O. or W.O. No.	CALCULATION IDENTIFICATION NUMBER	
05996.01	9802230310-01	

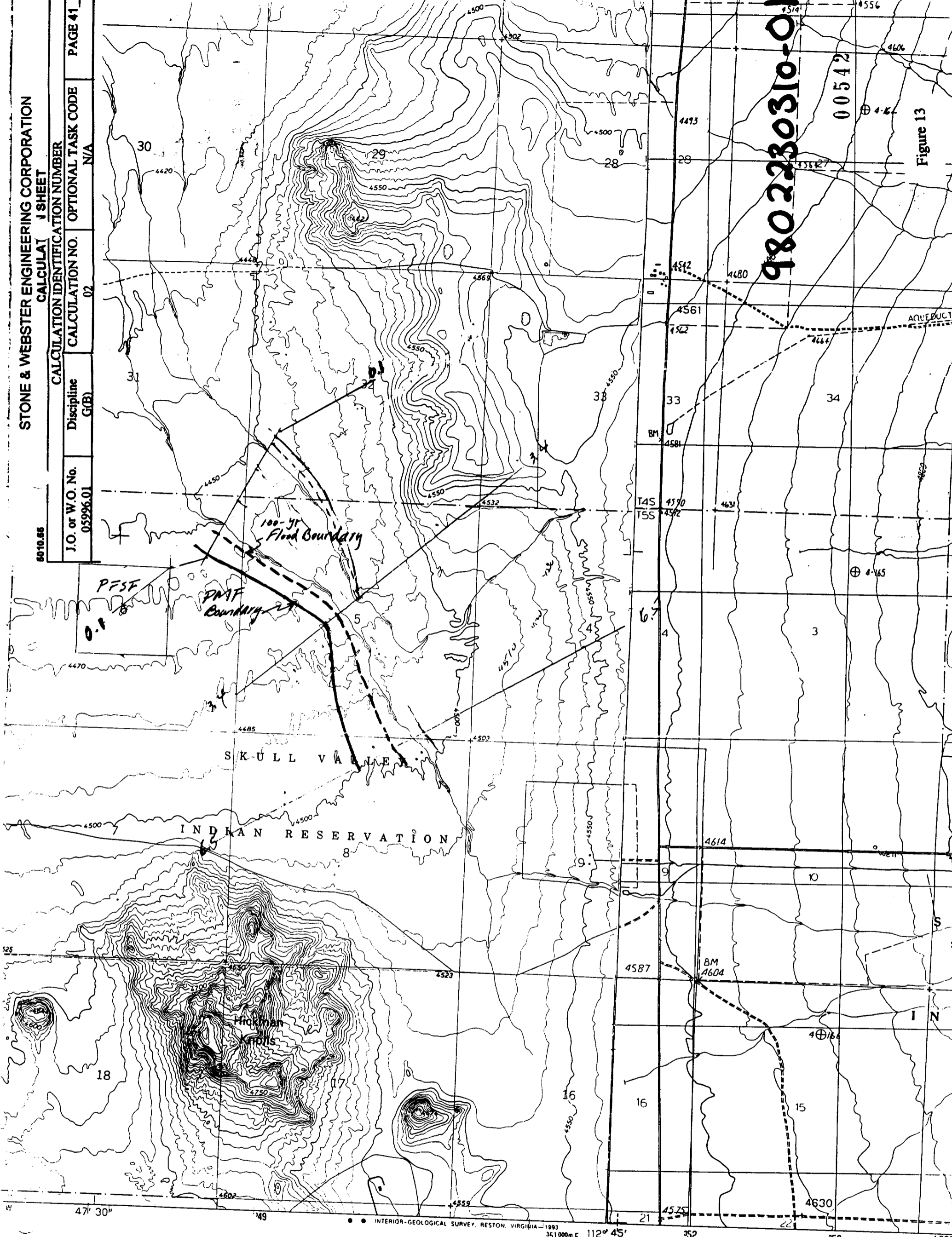
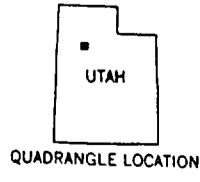
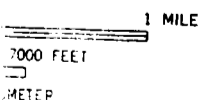


Figure 13



ROAD CLASSIFICATION

Primary highway, hard surface	Light-duty road, hard or improved surface
Secondary highway, hard surface	Unimproved road
○ Interstate Route	○ U. S. Route
	○ State Route

PRODUCED BY THE UNITED STATES GEOLOGICAL SURVEY
 CONTROL BY USGS, NOS/NOAA
 COMPILED FROM AERIAL PHOTOGRAPHS TAKEN 1980
 FIELD CHECKED 1981 MAP EDITED 1985
 PROJECTION LAMBERT CONFORMAL CONIC
 DATUM 1000-METER UNIVERSAL TRANSVERSE MERCATOR ZONE 12
 GRID TICS 10,000-FOOT STATE GRID TICS UTAH, CENTRAL ZONE
 GRID DECLINATION 1°05' WEST
 MAGNETIC NORTH DECLINATION 15° EAST
 VERTICAL DATUM NATIONAL GEODETTIC VERTICAL DATUM OF 1929
 HORIZONTAL DATUM 1927 NORTH AMERICAN DATUM
 place on the predicted North American Datum of 1983, move
 projection lines as shown by dashed corner ticks
 (meters north and 67 meters east)
 There may be private inholdings within the boundaries of any
 Federal and State Reservations shown on this map
 where omitted, land lines have not been established

HICKMAN KNOLLS, UTAH
 40112-D7-TF-024

1993

DMA E-SERIES V897

PR
 Produ
 manu
 matio
 field c

REGISTRATION 22092
 JEST