

40-2397  
Lil# 5TB-472

**KAISER ALUMINUM**  
CORPORATE ENVIRONMENTAL

January 2, 2001

Mr. John Buckley  
Nuclear Regulatory Commission  
TWFN, 7F27  
Washington, DC 20555-0001

Re: Kaiser Tulsa Adjacent Land Remediation Plan Figures

Dear Mr. Buckley:

Enclosed are figures for the July, 1999 Adjacent Land Remediation Plan. Please note that there is no figure 3.1-1. Figure 2.2-1 is the Organizational Chart.

Very truly yours,



J. W. (Bill) Vinzant, P.E.  
Regional Environmental Manager

JWV/shh

cc: Mr. Paul Handa – Tulsa  
File – Tulsa 3.12.06

4mSS01Public

---

## **LIST OF FIGURES**

Figure 1.1-1 Areas to be Remediated

Figure 1.3-1 Kaiser Location

Figure 1.4-1 Grid Block Locations

Figure 1.4-2 Depth of Thorium Contaminated Soil by Grid Block

Figure 1.4-3 Areas Where Thorium Contaminated Soil Exceeds Four Feet In Depth

Figure 1.4-4 Areal Distribution of Thorium contaminated Soil

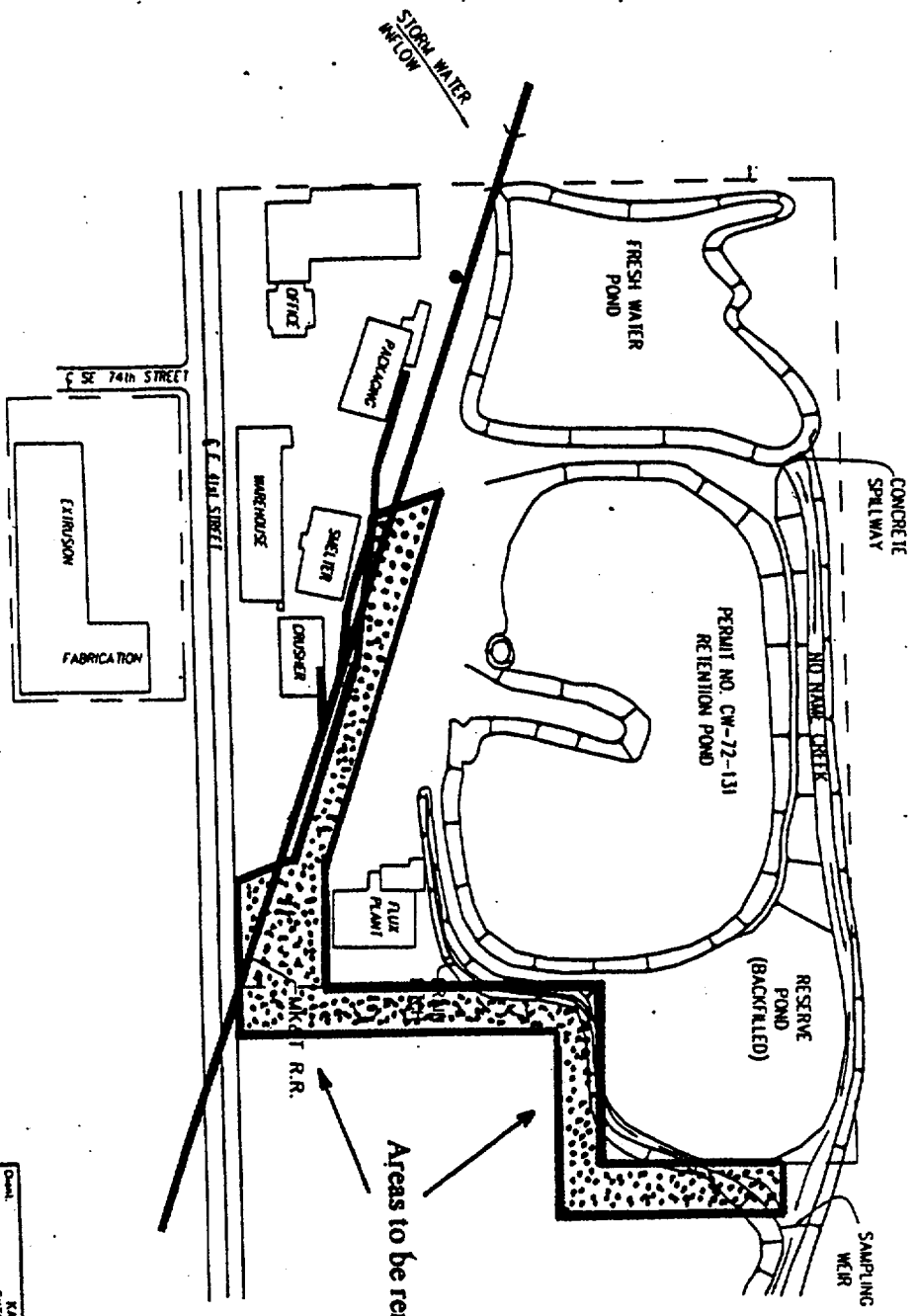
Figure 2.2-1 Project Organizational Chart

Figure 3.1-1 Organizational Chart for Kaiser Remediation Project Activities

Figure A-1 Sampling Location of 20 Dross Samples

Figure A-2 Thorium 230 to Thorium  $(232+228) \div 2$  Concentration Ratio in 20 Magnesium Dross Samples + A series

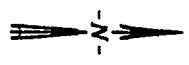
Figure I.1-1 Areas to be remediated



Areas to be remediated

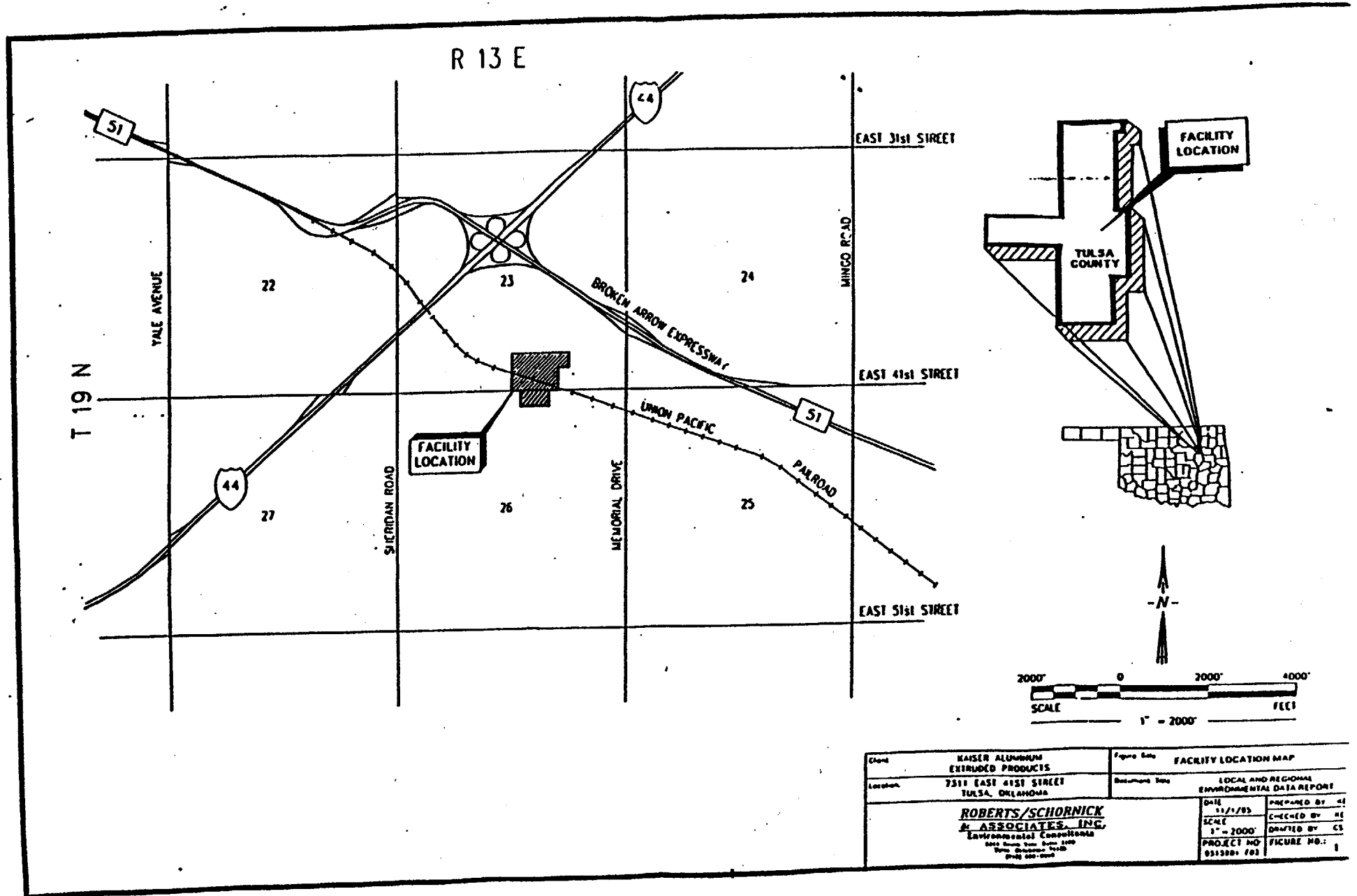
LEGEND

--- PROPERTY BOUNDARY



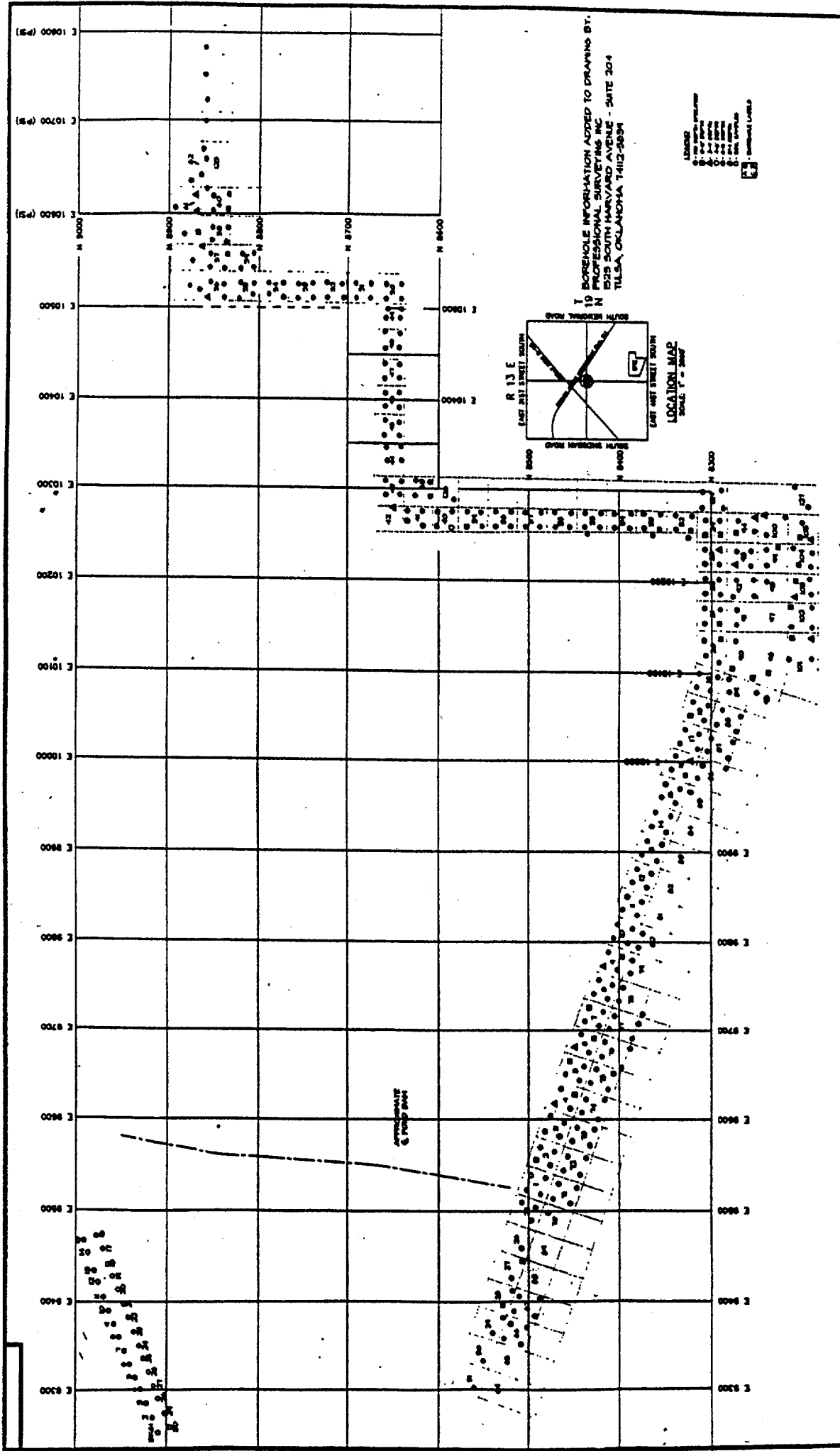
Client:	Kaiser Aluminum Extruded Products	Project Title:	FACILITY BASE MAP
Location:	7311 EAST 41ST STREET TULSA, OKLAHOMA	Document Title:	LOCAL AND REGIONAL ENVIRONMENTAL DATA REPORT
Prepared by:	ROBERTS/SCHORWICK & ASSOCIATES, INC. Environmental Consultants 1111 North Lincoln Tulsa, Oklahoma 74106 918 482-0000	Date:	11/1/78
Scale:	AS SHOWN	Checked by:	ME
Project No:	931300 101	Drawn by:	CS
		Figure No.:	2

Figure 1.3-1 Location of Kaiser Site



Client	KAISER ALUMINUM EXTRUDED PRODUCTS	Figure Title	FACILITY LOCATION MAP		
Location	7311 EAST 41ST STREET TULSA, OKLAHOMA	Document Type	LOCAL AND REGIONAL ENVIRONMENTAL DATA REPORT		
<b>ROBERTS/SCHORNICK &amp; ASSOCIATES, INC.</b> Environmental Consultants 6000 North 100th Street, Suite 1100 Tulsa, Oklahoma 74133 (918) 482-1000		Date	11/1/85	Prepared By	CS
		Scale	1" = 2000'	Checked By	ME
		Project No.	031200-103	Drafted By	CS
		Figure No.	1		

Figure 1.4 - 1 Grid Block Locations



**AM** A & M ENGINEERING AND ENVIRONMENTAL SERVICES, INC.

3-2-1997 3-8-1997 3-1-1997

**TULSA REMEDIATION PROJECT**

PROJECT NUMBER: 134-003  
 SCALE: 1"=50'

**Professional Surveying, Inc.**  
 8225 S. HARVARD, SUITE 204, TULSA, OKLAHOMA 74112-3834

**Figure 1.4-2**  
**Estimated Depth of Thorium in Land Adjacent the Dross Remediation Site**  
 Each Bar Represents a Grid Cell

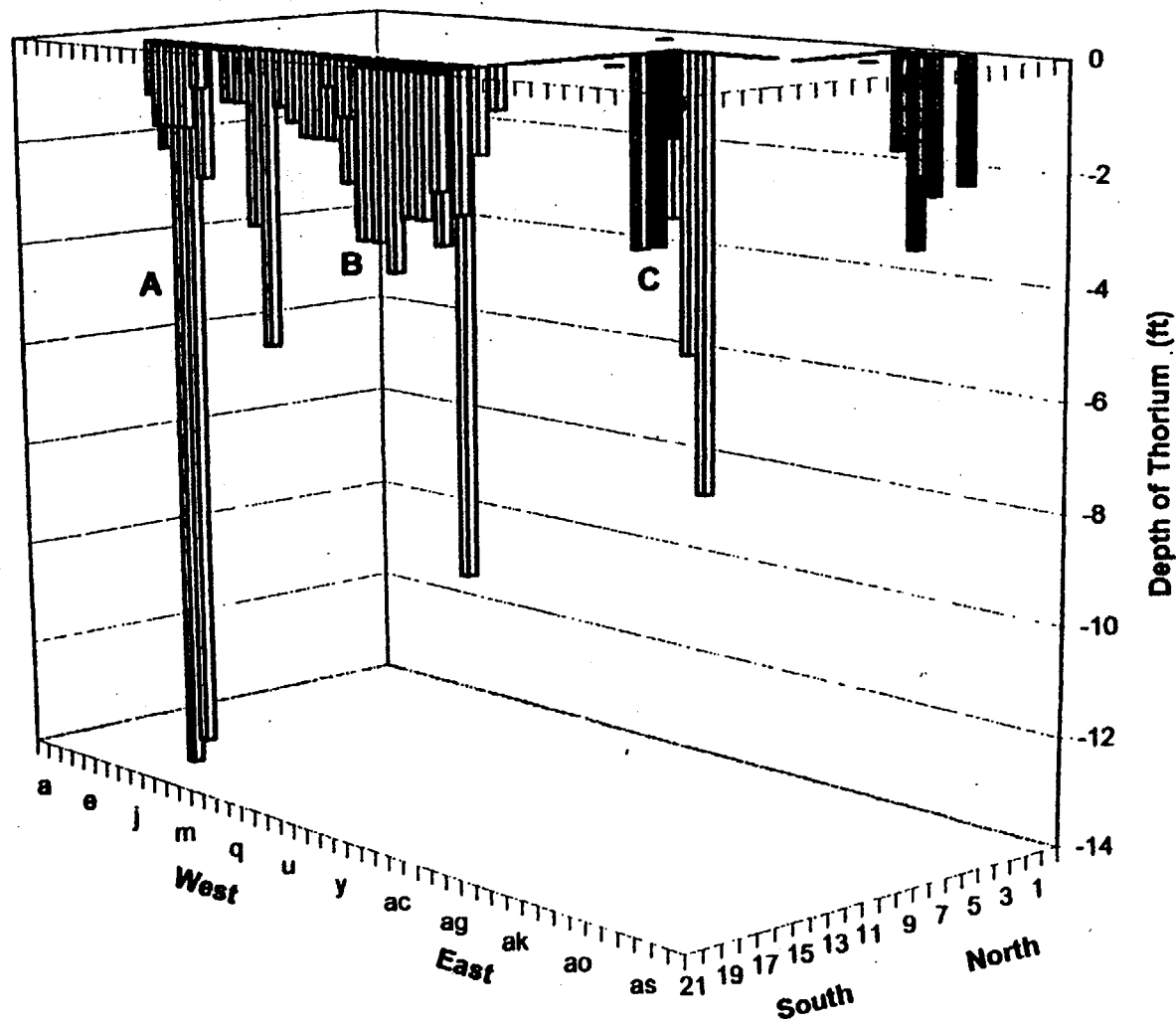
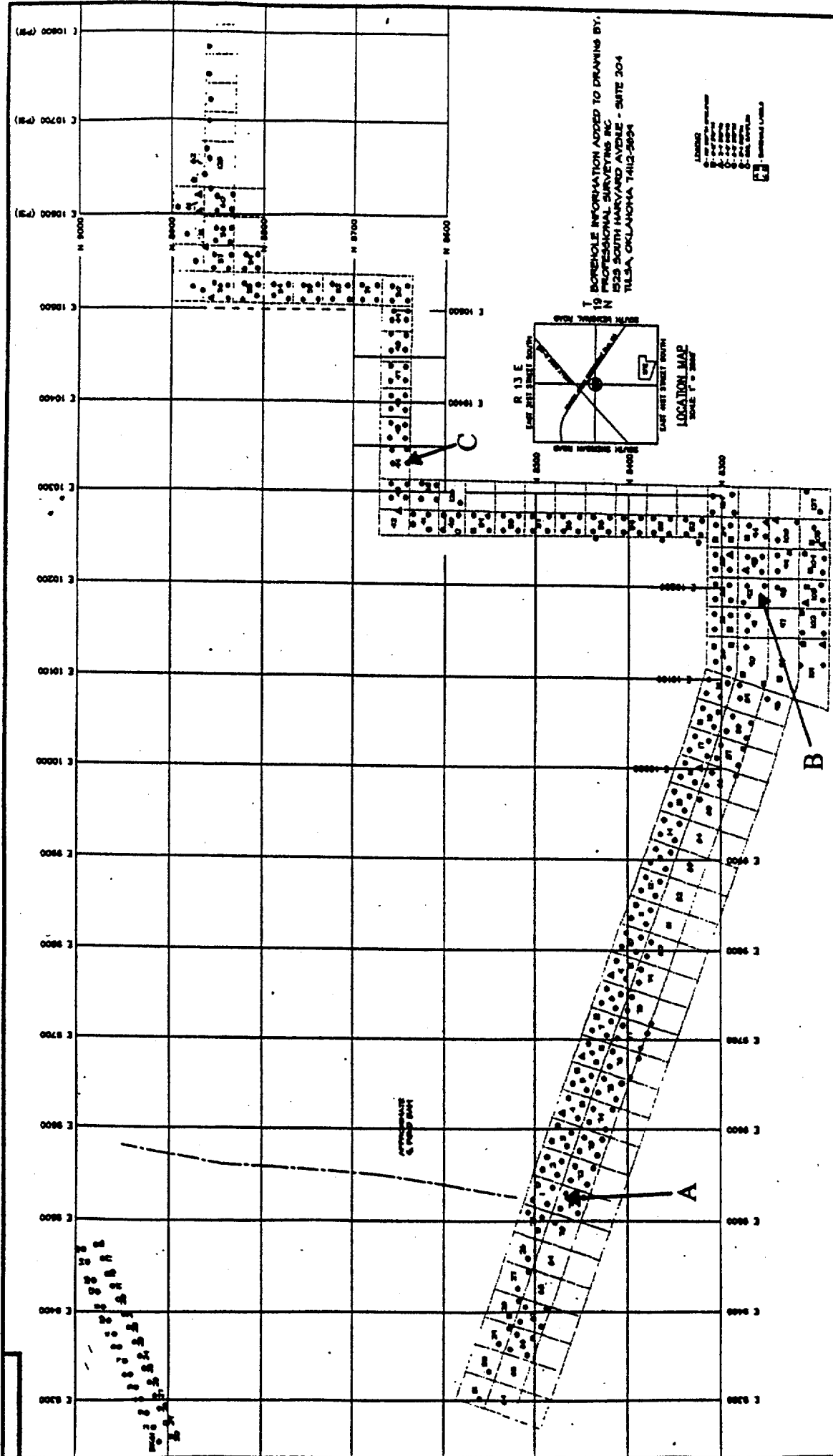


Figure 1.4 - 3 Areas Where Contamination Exceeds 4 Feet



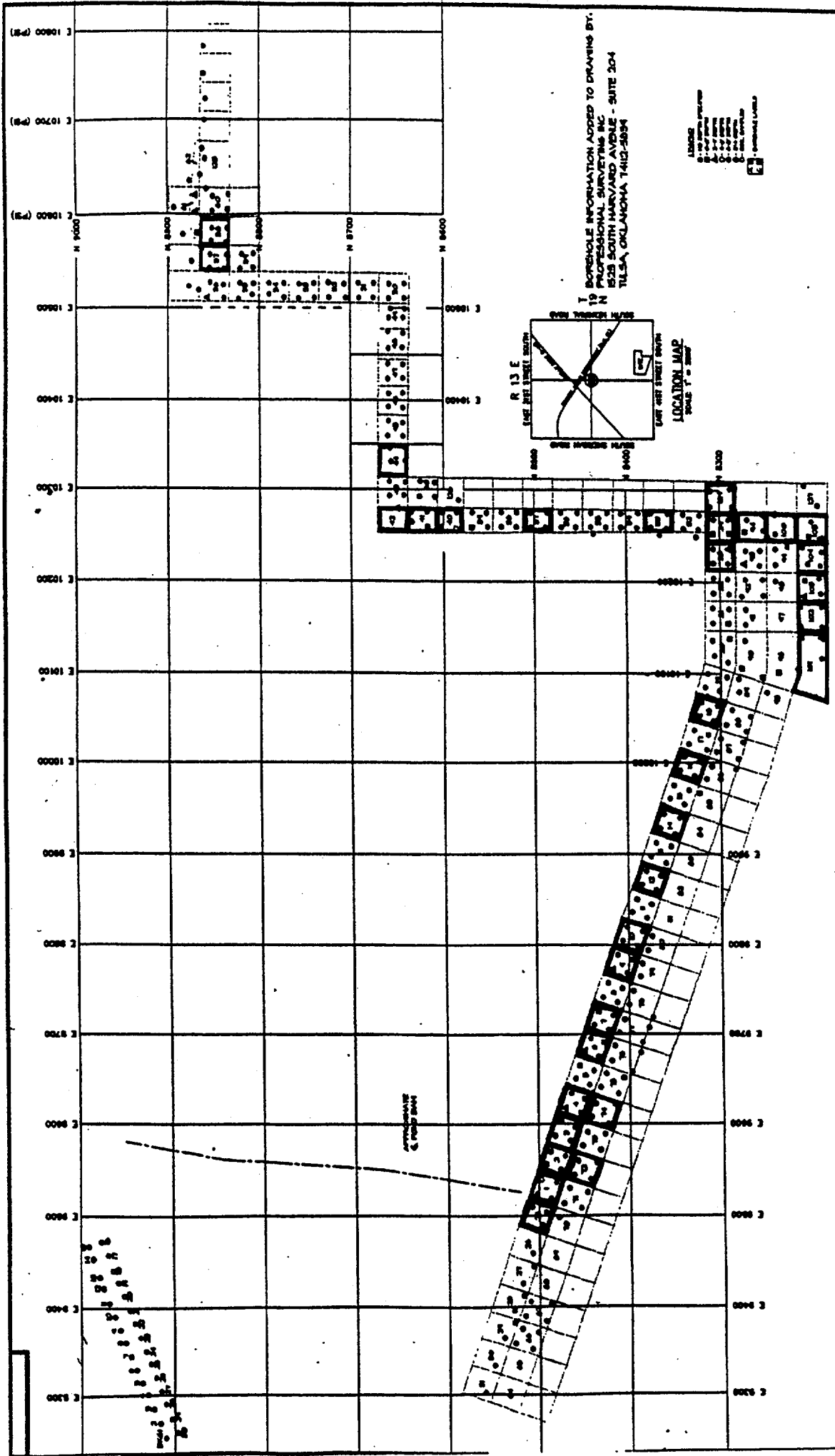
A & M ENVIRONMENTAL SERVICES, INC.  
223 S HARVARD AVE, TULSA, OKLAHOMA 74112-5604  
PHONE: 918-438-1100  
FAX: 918-438-1101

TULSA REMEDIATION PROJECT

**Professional Surveys, Inc.**  
223 S HARVARD AVE, TULSA, OKLAHOMA 74112-5604  
PHONE: 918-438-1100  
FAX: 918-438-1101

DATE	10/11/93	PROJECT NO.	1000-001	SCALE	1" = 200'
DRAWN BY	AS	CHECKED BY	AS	DATE	10/11/93
DESIGNED BY	AS	APPROVED BY	AS	DATE	10/11/93

Figure 1.4 - 4 Areal Distribution of Thorium Contaminated Soil



**M**

A. H. ENGINEERING AND  
 ENVIRONMENTAL SERVICES, INC.

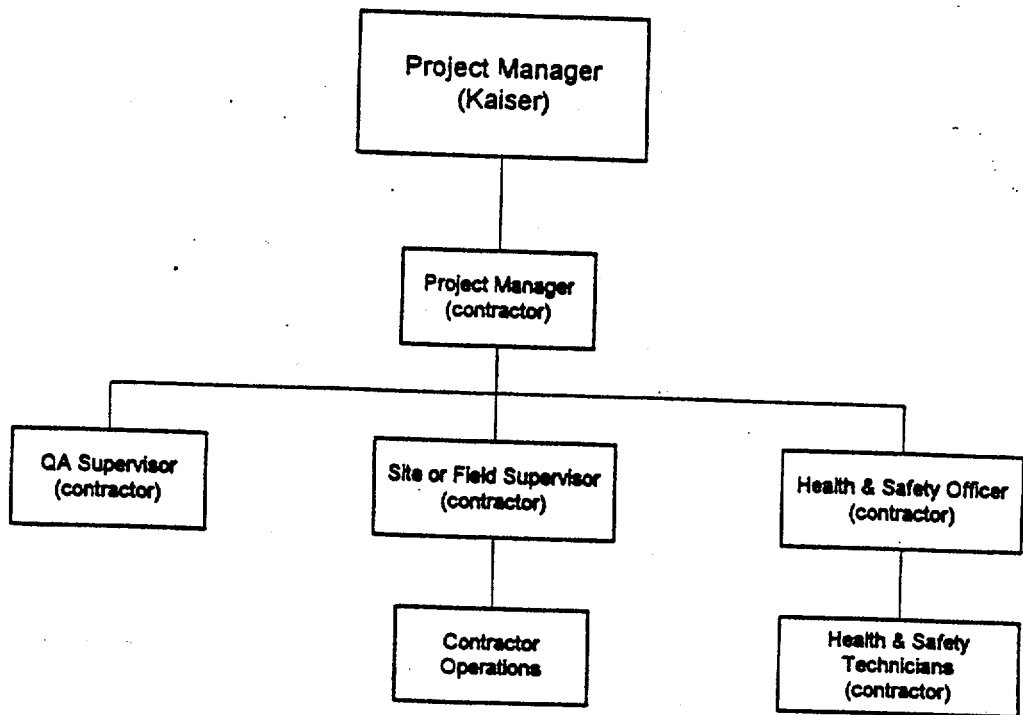
1000 N. W. 10th St., Tulsa, Oklahoma 74103-1000  
 TEL: 918-438-1000 FAX: 918-438-1001  
 E-MAIL: ahs@ahes.com

TULSA REMEDIATION PROJECT

**Appresson Supply, Inc.**  
 1000 N. W. 10th St., Tulsa, Oklahoma 74103-1000  
 TEL: 918-438-1000 FAX: 918-438-1001  
 E-MAIL: appresson@appresson.com



Figure 2.2-1 Adjacent Land Remediation Project Organization



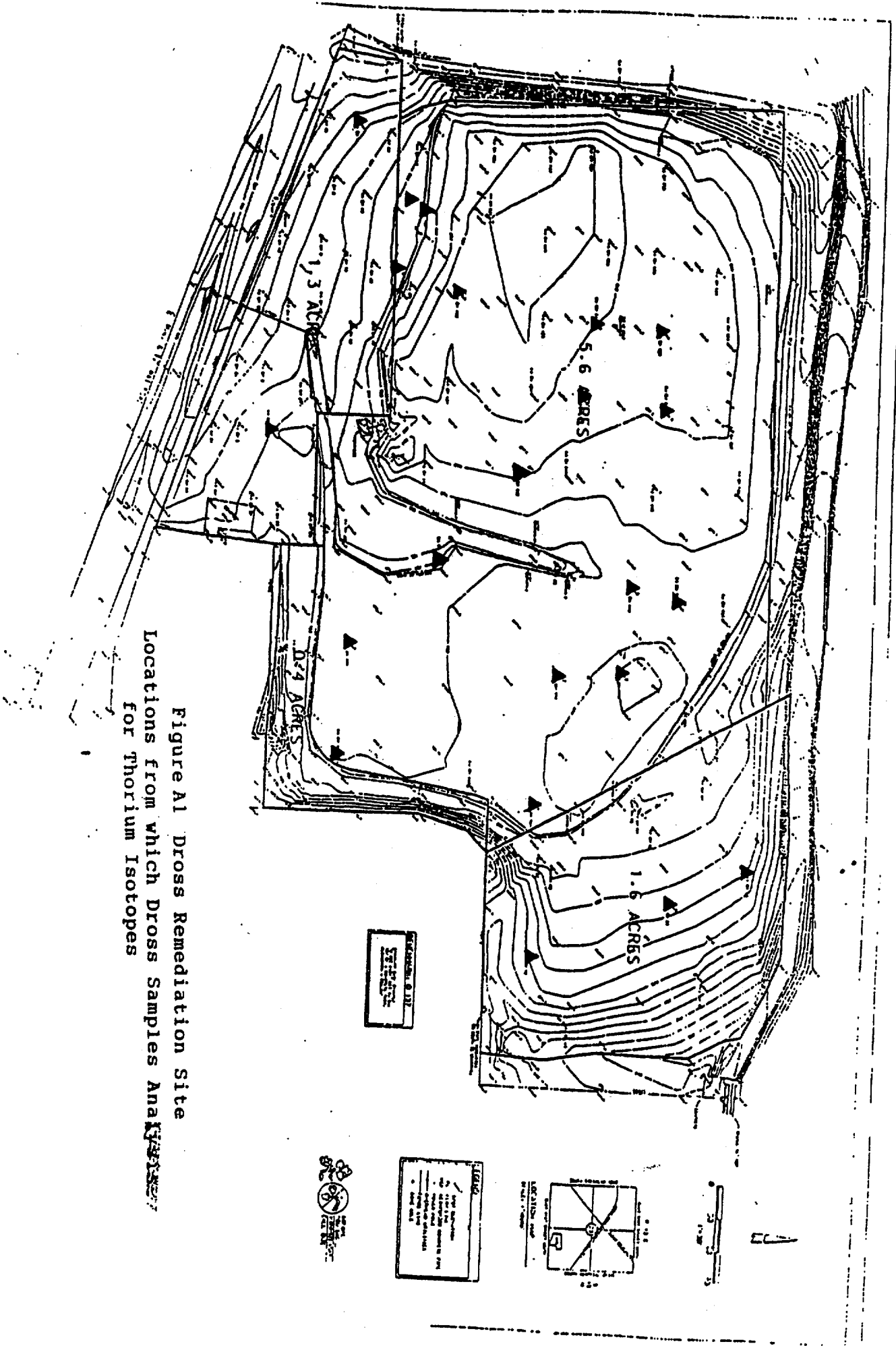
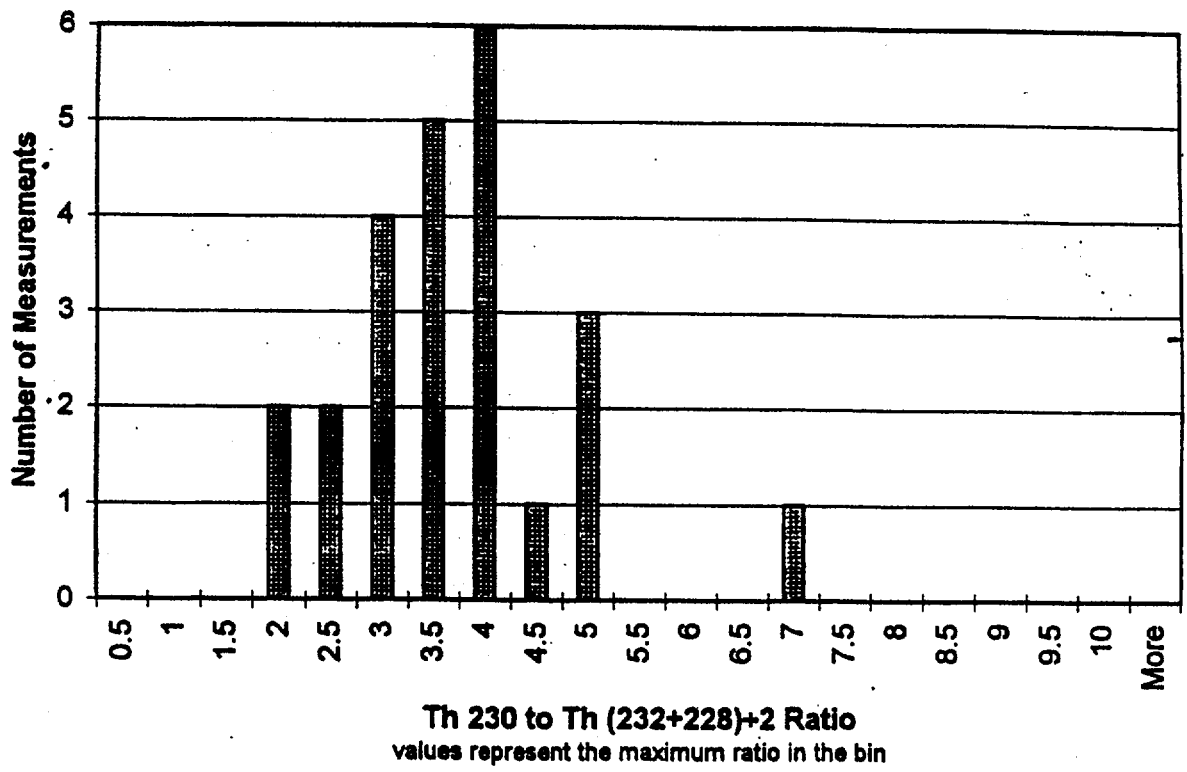


Figure A1 Dross Remediation Site  
 Locations from which Dross Samples Analyzed  
 for Thorium Isotopes



**Figure A-2. Thorium 230 to Thorium (232+228)+2 Concentration Ratio in 20 Magnesium Dross Samples + A series**