

SOUTH

C

01/33

02/34

04/34

06/36

17

10/38

11/38

12/38

13/38

14/38

15/38

16/38

17/39

18/39.5

19/40

195/41

20/41.5

21/41.5

22/42

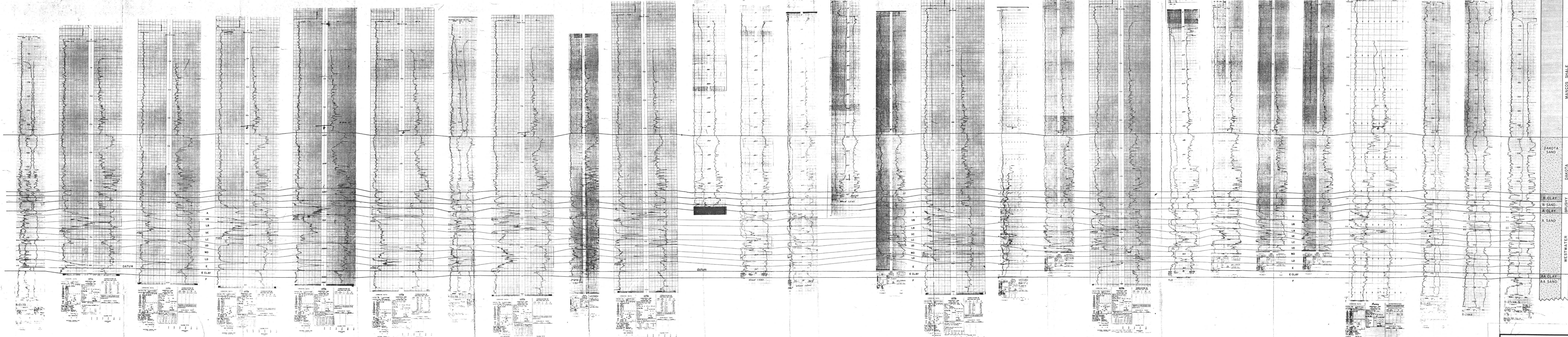
23/43

24/44

27/44.5

NORTH

C'



HYDRO RESOURCES INC.  
 Churchrock Project  
 MENIFEE COUNTY, NEW MEXICO  
 SECTION 8 CROSS-SECTION  
 C-C'  
 Figure 26-B  
 DALLAS TEXAS MAY 1987

0-2