

Date Entered: Jun 02, 2000

TO: USNRC/WASHINGTON  
JMCKNIGHT

Copy Number: 145

TRANSMITTAL NUMBER: 153473

PROCEDURE NUMBER: SEP

TITLE: SITE EMERGENCY PLAN

TRANSMITTAL: LISTED BELOW ARE NEW/REVISED PROCEDURES WHICH MUST BE IMMEDIATELY INSERTED INTO OR DISCARDED FROM YOUR PROCEDURE MANUAL.

Action Required	Section or Description
REMOVE AND DESTROY	SEP, R/1, COVERSHEET AND DOCUMENT PAGES 95-96
REPLACE WITH	SEP, R/1, COVERSHEET AND DOCUMENT PAGES 95-96 EDITORIAL

**SIGN, DATE, AND RETURN THE ACKNOWLEDGEMENT FORM WITHIN 10 DAYS TO THE PALISADES PLANT DOCUMENT CONTROL.**

SIGNATURE OR INITIALS

DATE

A045

**PALISADES NUCLEAR PLANT**  
**SITE EMERGENCY PLAN**

**TITLE: SITE EMERGENCY PLAN**

J. B. Burnett / 6/2/00  
Procedure Sponsor Date

BNYoung / 2/18/00  
Technical Reviewer Date

DJFitzgibbon / 3/4/00  
User Reviewer Date

**PALISADES NUCLEAR PLANT**  
**SITE EMERGENCY PLAN**

SEP  
Revision 1  
Page 95 of 126

**TITLE: SITE EMERGENCY PLAN**

---

**TABLE 6-3**  
**GUIDANCE ON DOSE LIMITS**  
**FOR WORKERS PERFORMING EMERGENCY SERVICES**

<b>Dose Limit<sup>a</sup> (rem)</b>	<b>Activity</b>	<b>Condition</b>
5	all	
10	protecting valuable property	lower dose not practicable
25	life saving or protection of large populations	lower dose not practicable
> 25	lifesaving or protection of large populations	only on a voluntary basis to persons fully aware of the risks involved

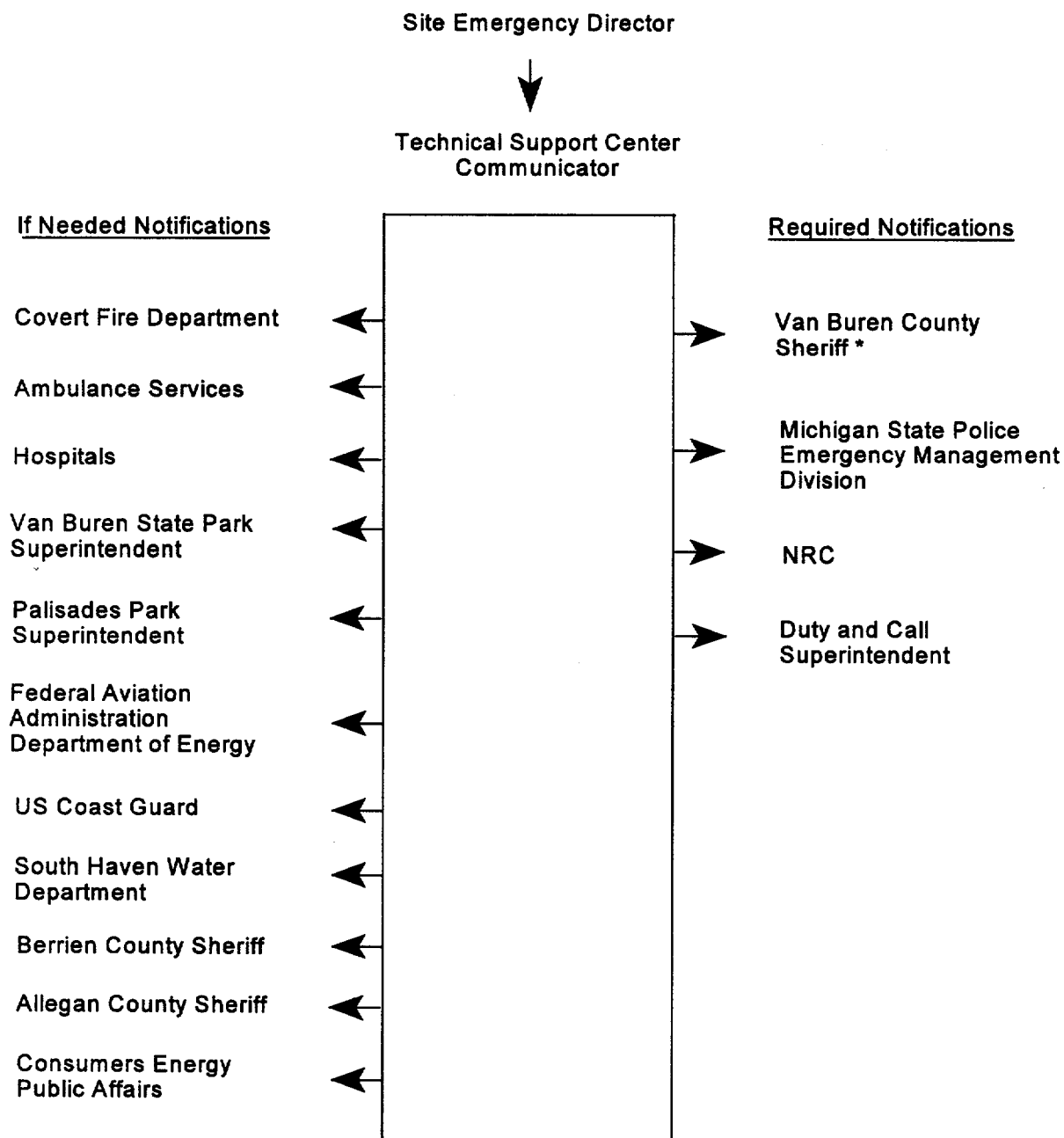
<sup>a</sup>Sum of external effective dose equivalent and committed effective dose equivalent to nonpregnant adults from exposure and intake during an emergency situation. Workers performing services during emergencies should limit dose to the lens of the eye to three times the listed value and doses to any other organ (including skin and body extremities) to ten times the listed value. These limits apply to all doses from an incident, except those received in unrestricted areas by members of the public during the intermediate phase of the incident.

**PALISADES NUCLEAR PLANT**  
**SITE EMERGENCY PLAN**

**SEP**  
**Revision 1**  
**Page 96 of 126**

**TITLE: SITE EMERGENCY PLAN**

**FIGURE 6-1**  
**PALISADES PLANT NORMAL NOTIFICATION CHAIN**



\* Not a required notification if the State Emergency Operations Center is activated.