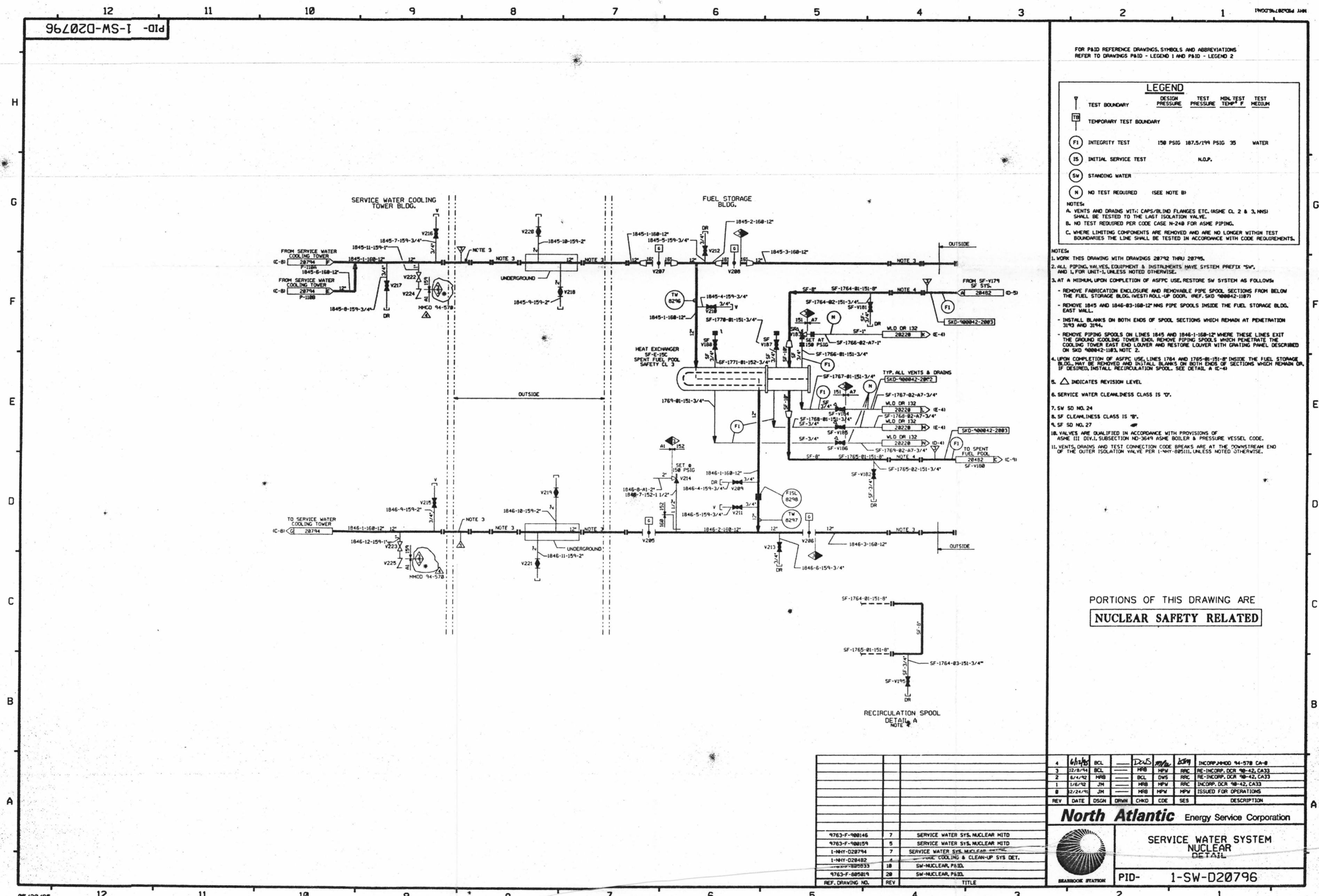


FOR INFORMATION ONLY

PID-1-SW-D20796



FOR PAID REFERENCE DRAWINGS, SYMBOLS AND ABBREVIATIONS REFER TO DRAWINGS PAID - LEGEND 1 AND PAID - LEGEND 2

LEGEND

TEST BOUNDARY	DESIGN PRESSURE	TEST PRESSURE	MIN. TEST TEMP. °F	TEST MEDIUM
(TB)				
(TTB)				
(FI)	150 PSIG	187.5/199 PSIG	35	WATER
(IS)			N.O.P.	
(SW)				
(N)				

NOTES:
 A. VENTS AND DRAINS WITH CAPS/BLIND FLANGES ETC. (ASME CL 2 & 3, NNS) SHALL BE TESTED TO THE LAST ISOLATION VALVE.
 B. NO TEST REQUIRED PER CODE CASE N-248 FOR ASME PIPING.
 C. WHERE LIMITING COMPONENTS ARE REMOVED AND ARE NO LONGER WITHIN TEST BOUNDARIES THE LINE SHALL BE TESTED IN ACCORDANCE WITH CODE REQUIREMENTS.

- NOTES:
- WORK THIS DRAWING WITH DRAWINGS 28792 THRU 28795.
 - ALL PIPING, VALVES, EQUIPMENT & INSTRUMENTS HAVE SYSTEM PREFIX "SW" AND L FOR UNIT-1, UNLESS NOTED OTHERWISE.
 - AT A MINIMUM, UPON COMPLETION OF ASPPC USE, RESTORE SW SYSTEM AS FOLLOWS:
 - REMOVE FABRICATION ENCLOSURE AND REMOVABLE PIPE SPOOL SECTIONS FROM BELOW THE FUEL STORAGE BLDG. (WEST) ROLL-UP DOOR. REF. SFD 980842-11879
 - REMOVE 1845 AND 1846-83-168-12" NNS PIPE SPOOLS INSIDE THE FUEL STORAGE BLDG. EAST WALL.
 - INSTALL BLANKS ON BOTH ENDS OF SPOOL SECTIONS WHICH REMAIN AT PENETRATION 3193 AND 3194.
 - REMOVE PIPING SPOOLS ON LINES 1845 AND 1846-1-159-12" WHERE THESE LINES EXIT THE COOLING TOWER END. REMOVE PIPING SPOOLS WHICH PENETRATE THE COOLING TOWER EAST END LOUVER AND RESTORE LOUVER WITH GRATING PANEL DESCRIBED ON SFD 980842-1185, NOTE 2.
 - UPON COMPLETION OF ASPPC USE, LINES 1764 AND 1765-81-151-8" INSIDE THE FUEL STORAGE BLDG. MAY BE REMOVED AND INSTALL BLANKS ON BOTH ENDS OF SECTIONS WHICH REMAIN. IF DESIRED, INSTALL RECIRCULATION SPOOL. SEE DETAIL A (IC-4)
 - △ INDICATES REVISION LEVEL
 - SERVICE WATER CLEANLINESS CLASS IS "D".
 - SW SD NO. 24
 - SF CLEANLINESS CLASS IS "B".
 - SF SD NO. 27
 - VALVES ARE QUALIFIED IN ACCORDANCE WITH PROVISIONS OF ASME III DIV.1, SUBSECTION ND-3649 ASME BOILER & PRESSURE VESSEL CODE.
 - VENTS, DRAINS AND TEST CONNECTION CODE BREAKS ARE AT THE DOWNSTREAM END OF THE OUTER ISOLATION VALVE PER 1-NHT-895111, UNLESS NOTED OTHERWISE.

PORTIONS OF THIS DRAWING ARE
NUCLEAR SAFETY RELATED

REV	DATE	DSGN	DRWN	CHKD	CODE	SES	DESCRIPTION
4	6/18/95	BCL	DJS	MPV	MPV	MPV	INCORP. HMD 94-578 CA-8
3	12/9/94	BCL	HRB	MPV	MPV	MPV	RE-INCORP. DCR 98-42, CA33
2	6/4/92	HRB	BCL	DWS	HRB	HRB	RE-INCORP. DCR 98-42, CA33
1	1/8/92	JM	HRB	MPV	MPV	MPV	INCORP. DCR 98-42, CA33
0	2/24/91	JM	HRB	MPV	MPV	MPV	ISSUED FOR OPERATIONS

North Atlantic Energy Service Corporation

**SERVICE WATER SYSTEM
 NUCLEAR
 DETAIL**

PID-1-SW-D20796

D-73