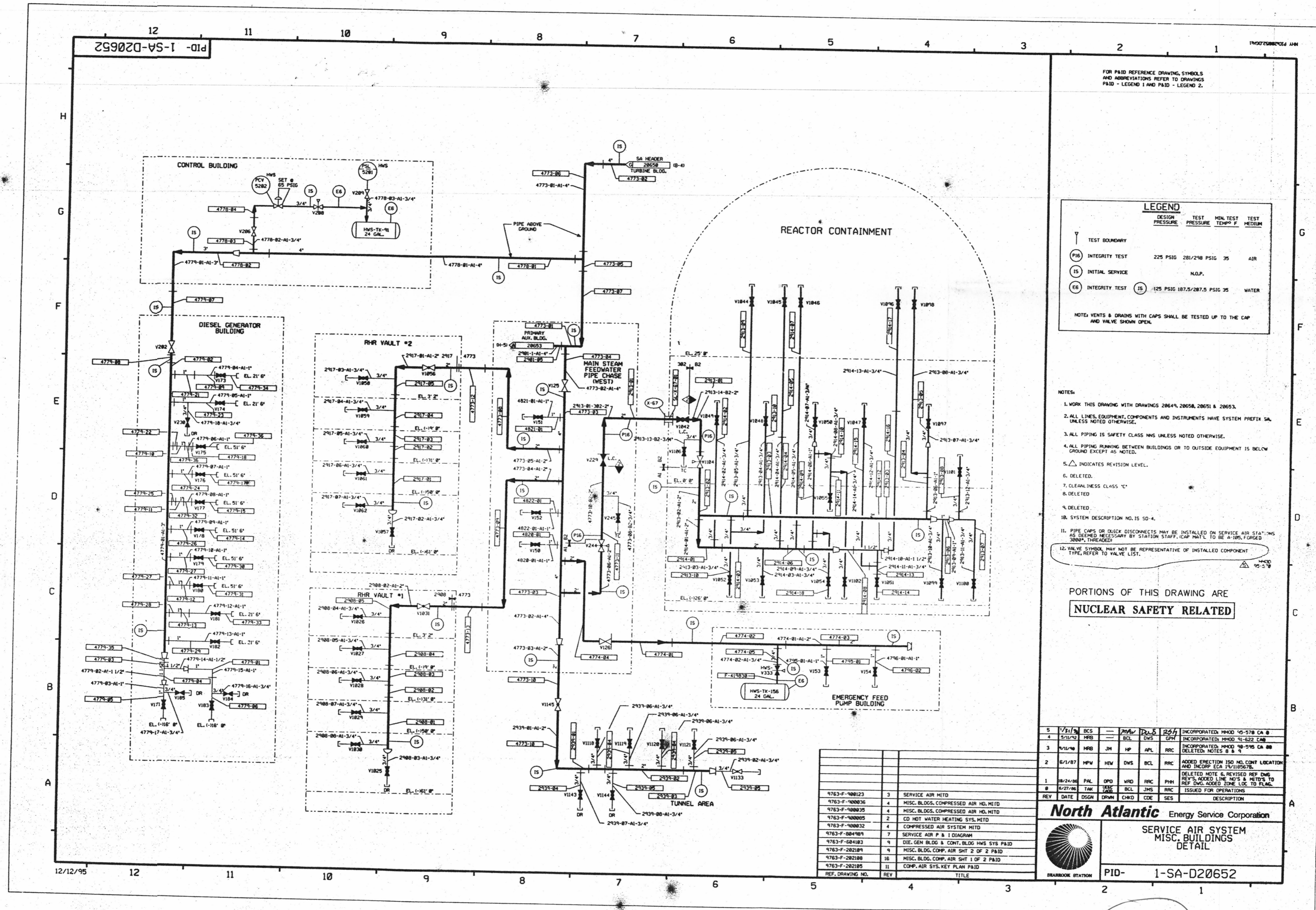


FOR INFORMATION ONLY



FOR PAID REFERENCE DRAWING, SYMBOLS AND ABBREVIATIONS REFER TO DRAWINGS PAID - LEGEND 1 AND PAID - LEGEND 2.

**LEGEND**

DESIGN SYMBOL	DESIGN PRESSURE	TEST PRESSURE	MIN. TEST TEMP. F.	TEST MEDIUM
(Y)				
(PI6)	225 PSIG	281/298 PSIG	35	AIR
(IS)			N.O.P.	
(E6)	125 PSIG	187.5/207.5 PSIG	35	WATER

NOTE: VENTS & DRAINS WITH CAPS SHALL BE TESTED UP TO THE CAP AND VALVE SHOWN OPEN.

- NOTES:**
1. WORK THIS DRAWING WITH DRAWINGS 2064, 2065, 2065.1 & 2065.3.
  2. ALL LINES, EQUIPMENT, COMPONENTS AND INSTRUMENTS HAVE SYSTEM PREFIX SA, UNLESS NOTED OTHERWISE.
  3. ALL PIPING IS SAFETY CLASS NNS UNLESS NOTED OTHERWISE.
  4. ALL PIPING RUNNING BETWEEN BUILDINGS OR TO OUTSIDE EQUIPMENT IS BELOW GROUND EXCEPT AS NOTED.
  5.  $\Delta$  INDICATES REVISION LEVEL.
  6. DELETED.
  7. CLEANLINESS CLASS "C"
  8. DELETED.
  9. DELETED.
  10. SYSTEM DESCRIPTION NO. IS 50-4.
  11. PIPE CAPS OR QUICK DISCONNECTS MAY BE INSTALLED ON SERVICE AIR STATIONS AS DEEMED NECESSARY BY STATION STAFF. (CAP MAT'L TO BE A-106, FORGED 3000#, THREADED)
  12. VALVE SYMBOL MAY NOT BE REPRESENTATIVE OF INSTALLED COMPONENT TYPE, REFER TO VALVE LIST.

PORTIONS OF THIS DRAWING ARE  
**NUCLEAR SAFETY RELATED**

REV	DATE	DSGN	DRWN	CHKD	CDE	SES	DESCRIPTION
5	5/11/95	BKS		MAV	DWS	PLS	INCORPORATED: HMOO 90-578 CA @
4	5/11/95	MRB		BCL	DWS	OPN	INCORPORATED: HMOO 91-622 CMB
3	4/11/95	MRB	JM	HP	APL	RRC	INCORPORATED: HMOO 90-595 CA @ DELETED NOTES 8 & 9
2	6/1/87	MPW	HW	DWS	BCL	RRC	ADDED ERECTION ISO NO. CONT. LOCATION AND INCORP. ECA 15/11/85/87.
1	10/24/86	PAL	OPD	VRD	RRC	PHI	DELETED NOTE 6, REVISED REF. ENG. REV'S, ADDED LINE NOS. & METRS. TO REF. ENG. ADDED ZONE LOC. TO PLANT.
0	8/27/86	TAK	DRN	BCL	JMS	RRC	ISSUED FOR OPERATIONS

**North Atlantic** Energy Service Corporation

**SERVICE AIR SYSTEM  
MISC. BUILDINGS  
DETAIL**

BEARBOOK STATION: PID- 1-SA-D20652

D-61