

Enlarged Region Of Liner At Rathole Stiffener Cut Out

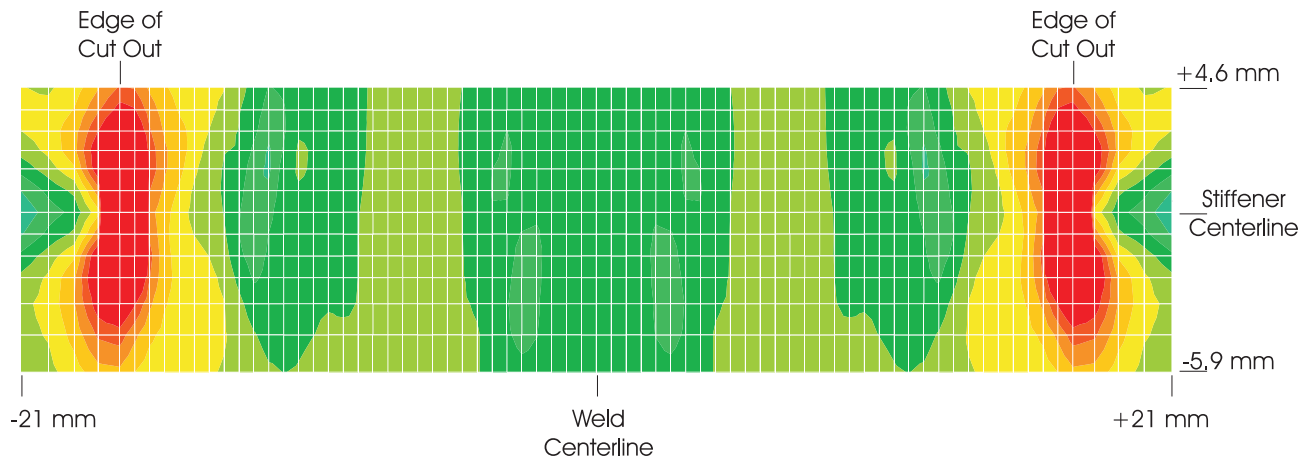


Figure 8-12. PCCV Liner Model 3, Posttest Analysis, Mesh Sensivity, Fine Mesh, Horizontal Strain Contour Plot At End of Analysis, (1.3 MPa)

PCCV - Post-Test, Local Liner Weld-Seam / Rathole Analysis

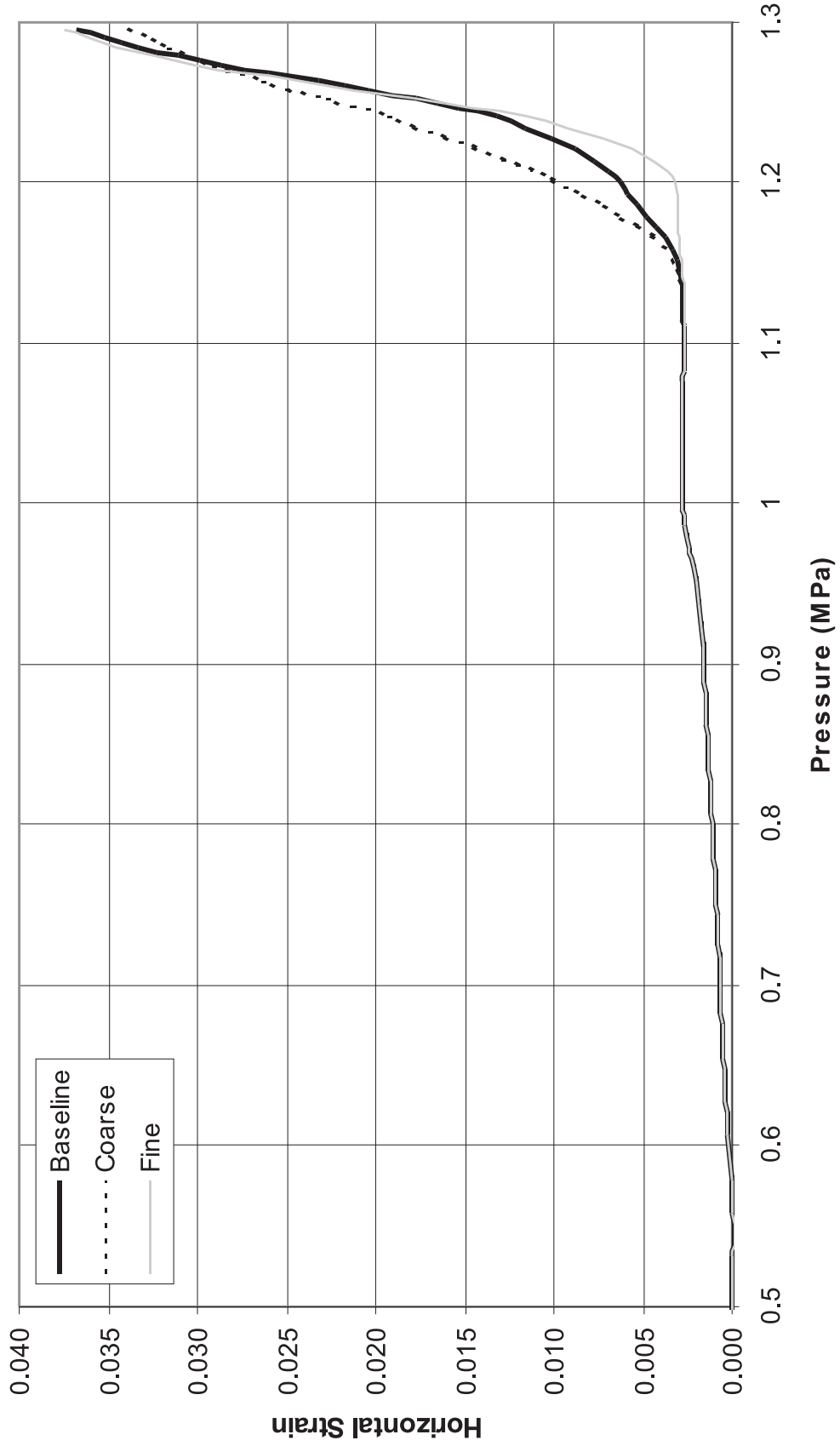


Figure 8-13. PCCV Liner Model, Posttest Analysis, Mesh Sensitivity, Comparison of Horizontal Strain, 5 mm Below Stiffener Reentrant Corner at Rath-Hole

PCCV - Post-Test, Local Liner Weld-Seam / Rathole Analysis

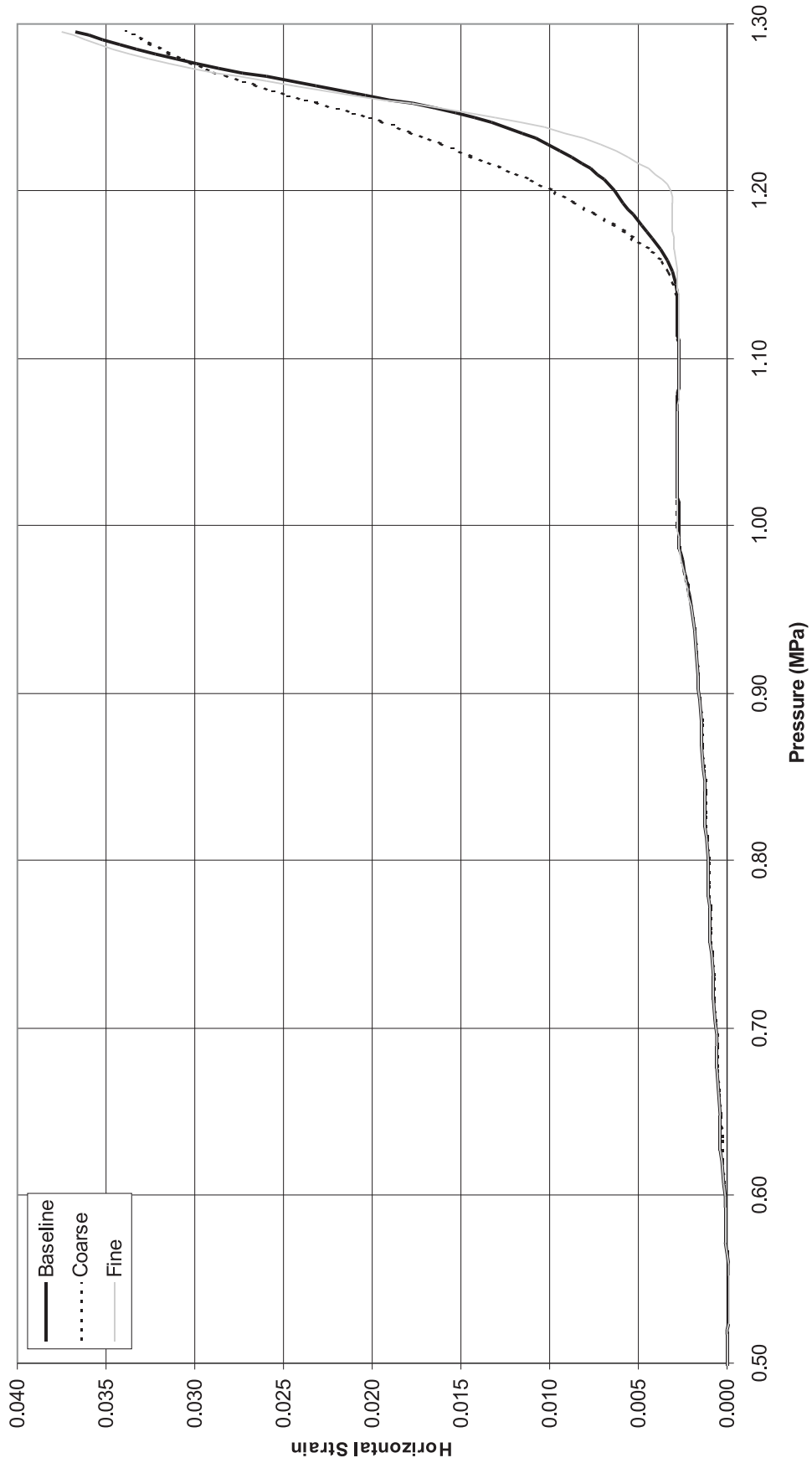


Figure 8-14. PCCV Liner Model, Posttest Analysis, Mesh Sensitivity, Comparison of Horizontal Strain, 1.2 mm Below Stiffener Reentrant Corner at Rat-Hole

PCCV - Post-Test, Local Liner Weld-Seam/ Rathole Analysis

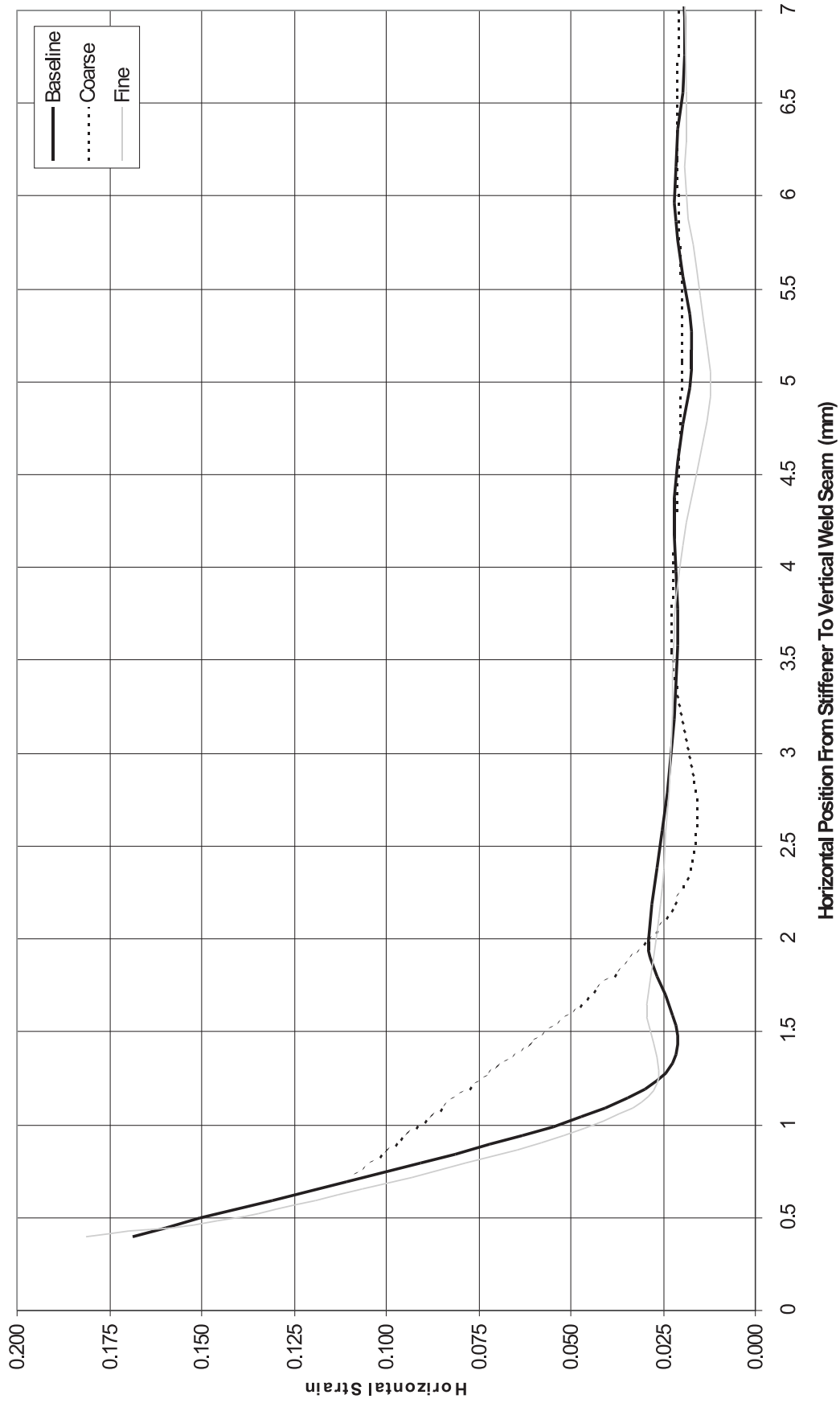


Figure 8-15. PCCV Liner Model, Posttest Analysis, Mesh Sensitivity, Comparison of Horizontal Strains, Horizontal Profile From Stiffener Towards Vertical Weld Seam at P = 1.3 MPa

PCCV - Post-Test, Local Liner Weld-Seam / Rathole Analysis

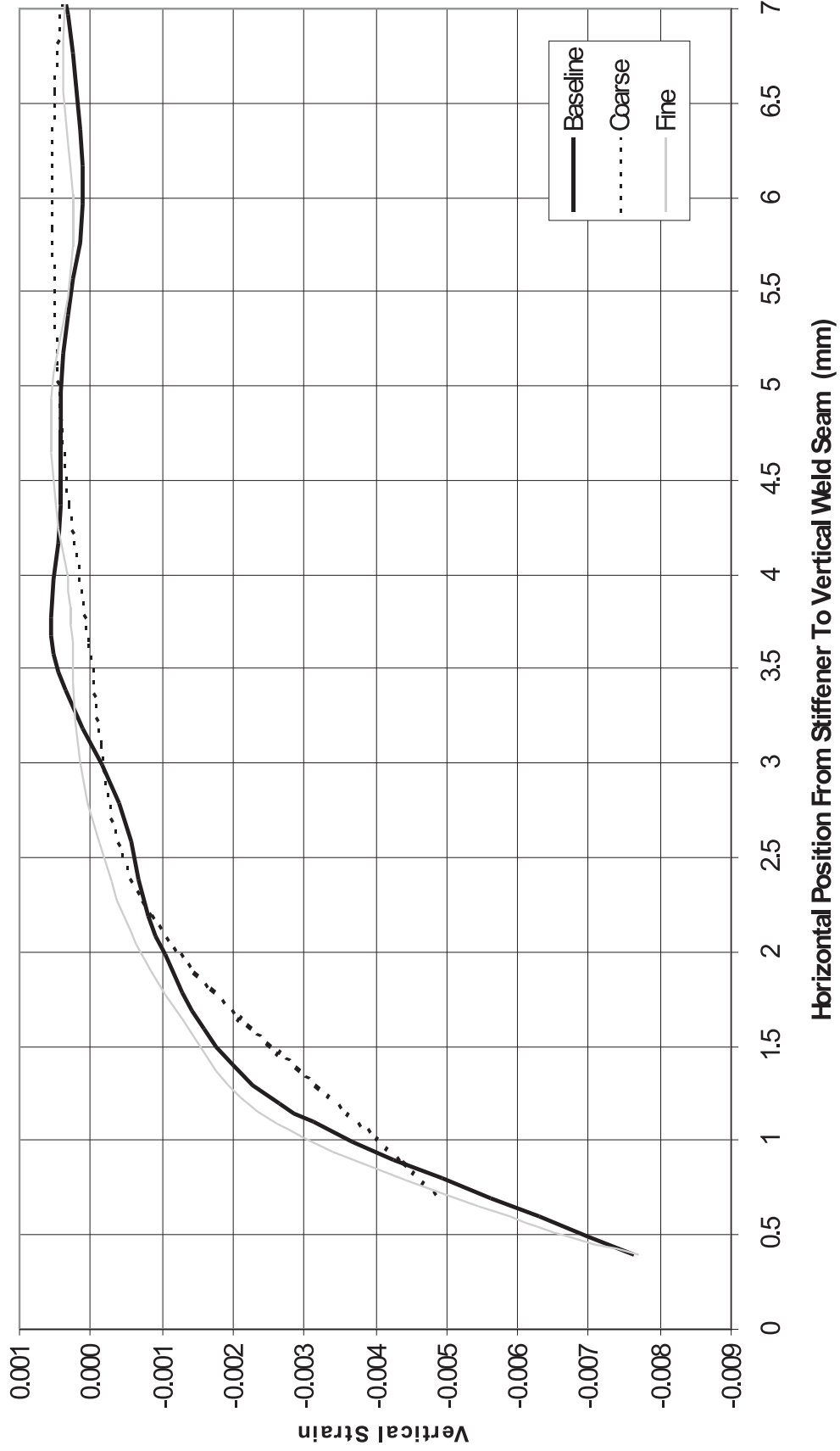


Figure 8-16. PCCV Liner Model, Posttest Analysis, Mesh Sensitivity, Comparison of Vertical Strains, Horizontal Profile from Stiffener Towards Vertical Weld Seam at P = 1.3 MPa

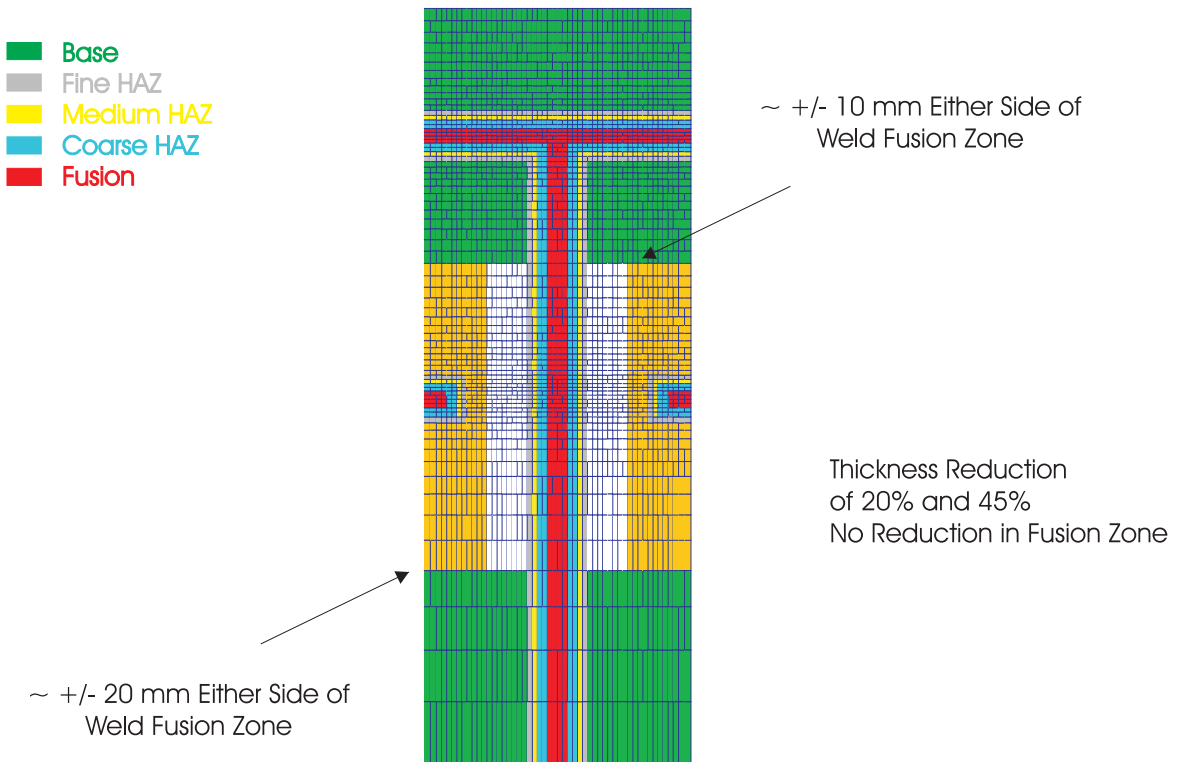
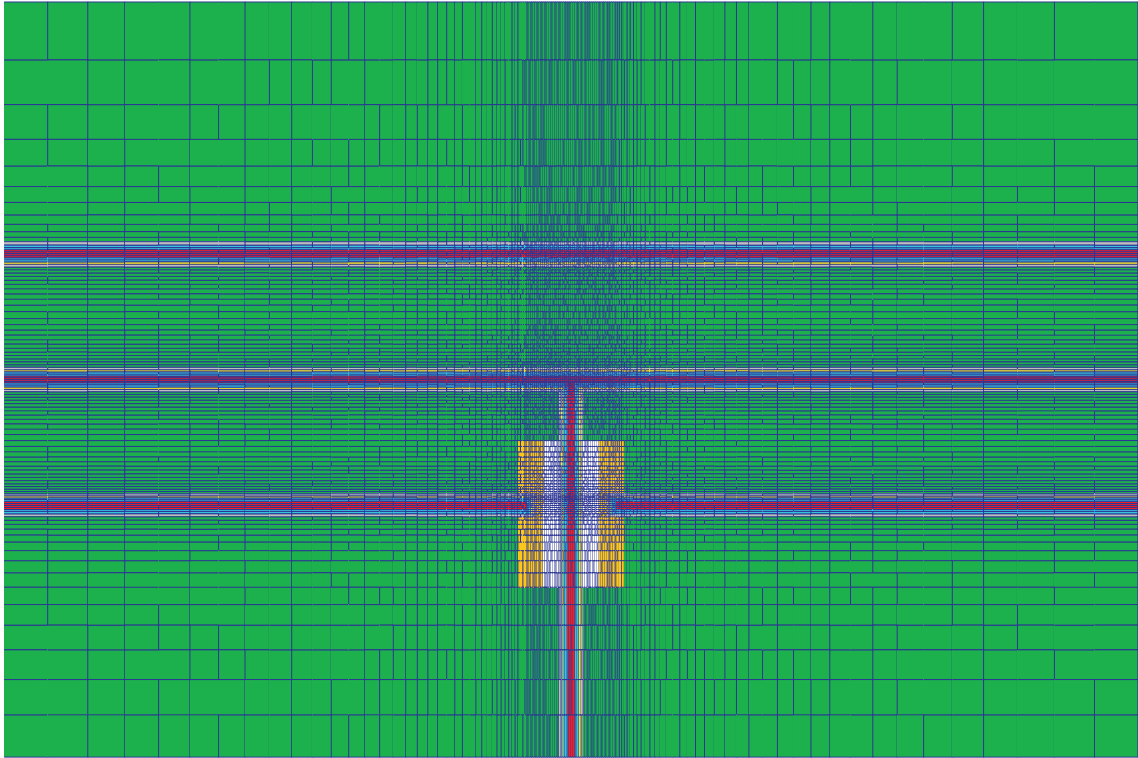
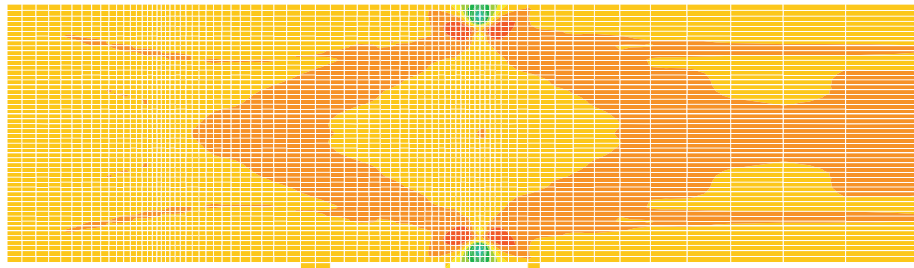
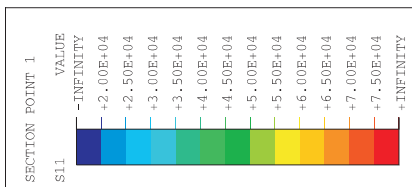
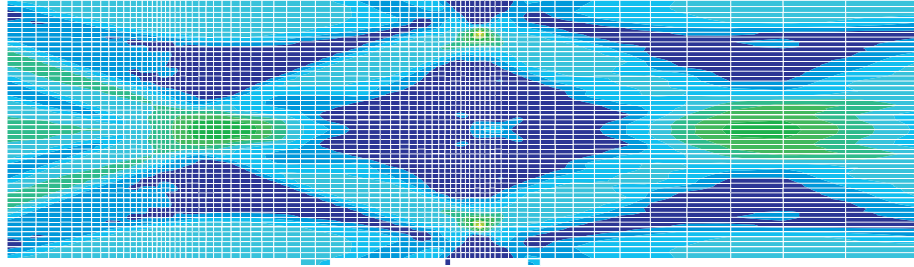
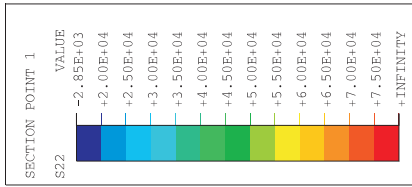


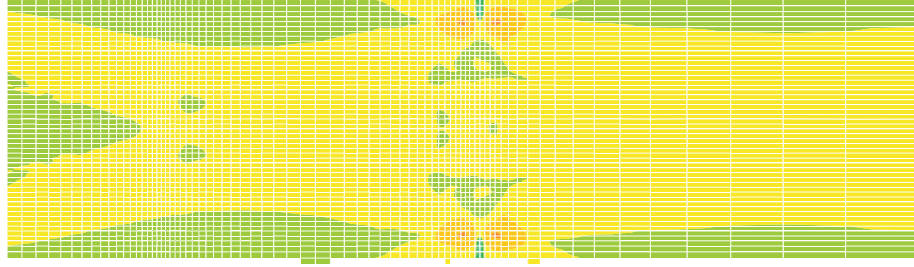
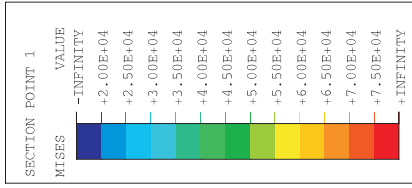
Figure 8-17. PCCV Liner Model, Posttest Analysis, Base, HAZ, and Fusion Regions, Extent of Thinning Zones



Horizontal Stress

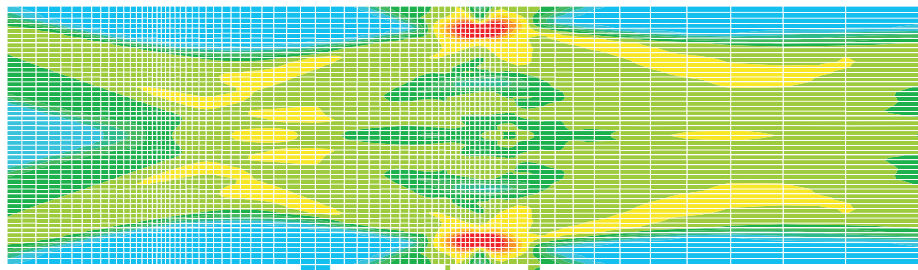
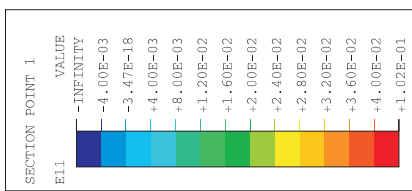


Vertical Stress

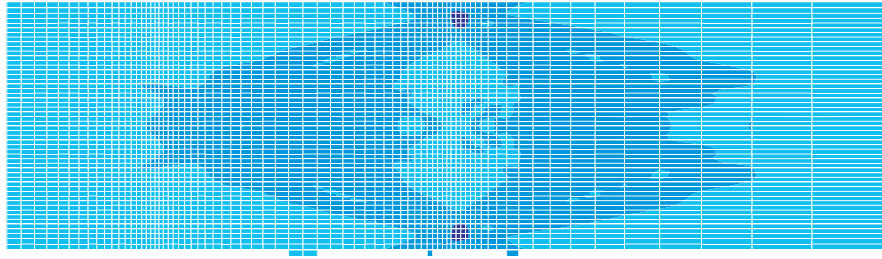
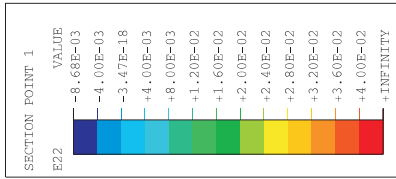


Mises Stress

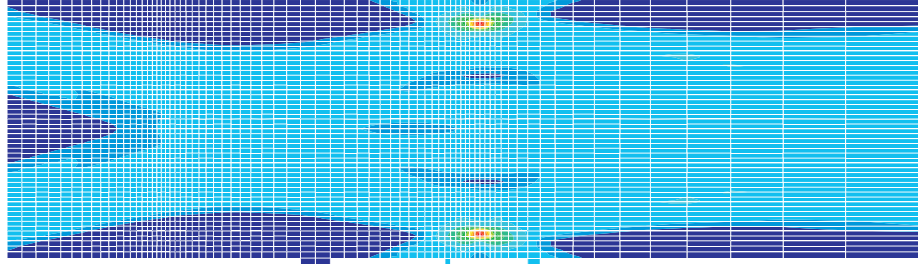
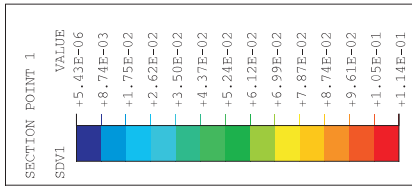
Figure 8-18. PCCV Liner Model, Posttest Analysis, Case 1, Stress Contour, at P = 3.3 Pd
(Stresses in psi; multiply by 0.00690 for MPa)



Horizontal Strain

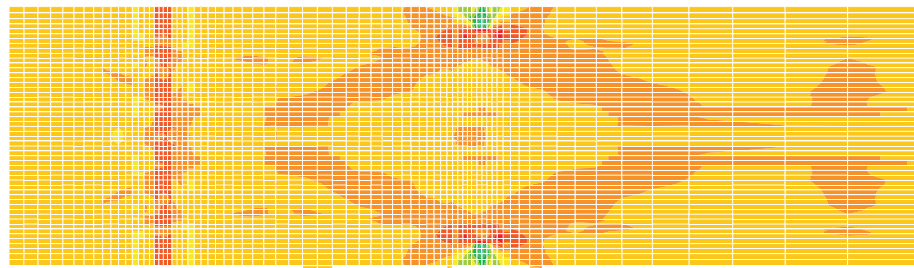
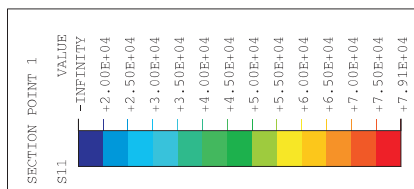


Vertical Strain

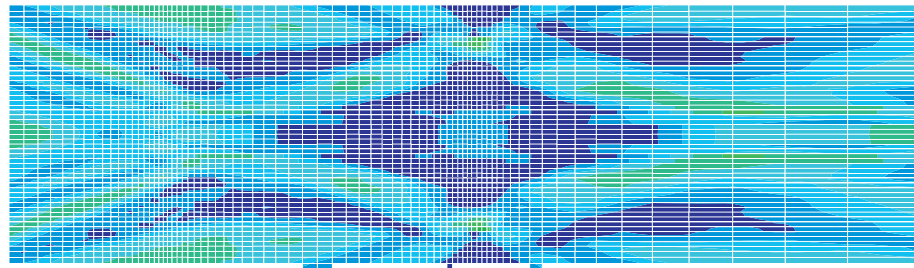
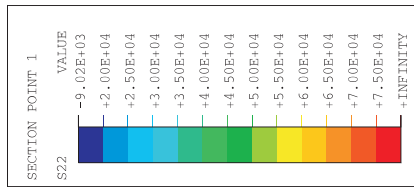


Effective Plastic Strain

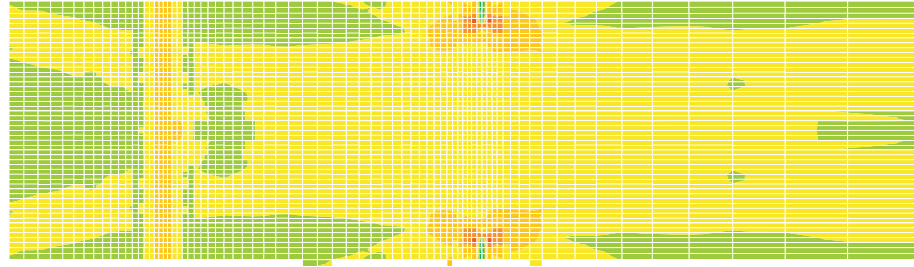
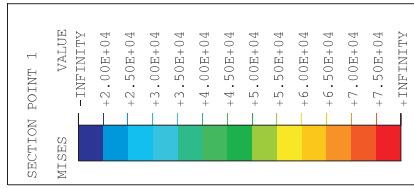
Figure 8-19. PCCV Liner Model, Posttest Analysis, Case 1, Strain Contour, at P = 3.3 Pd



Horizontal Stress

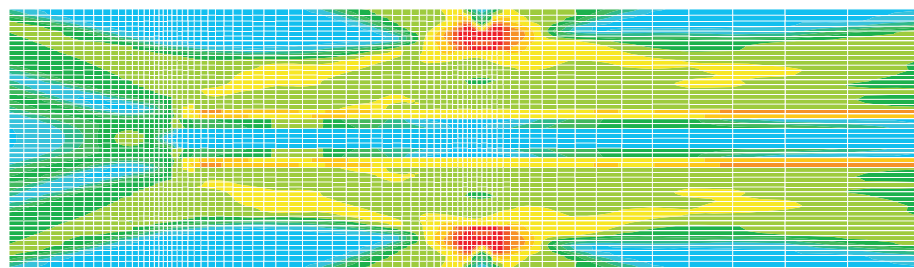
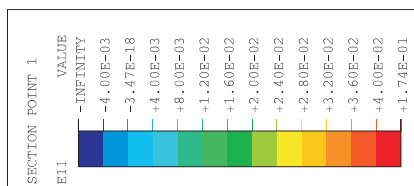


Vertical Stress

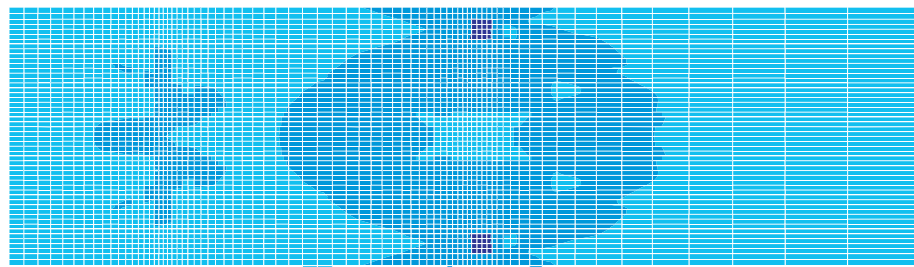
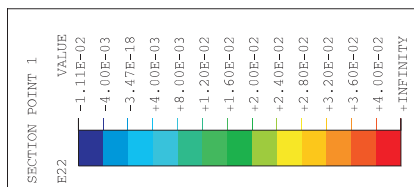


Mises Stress

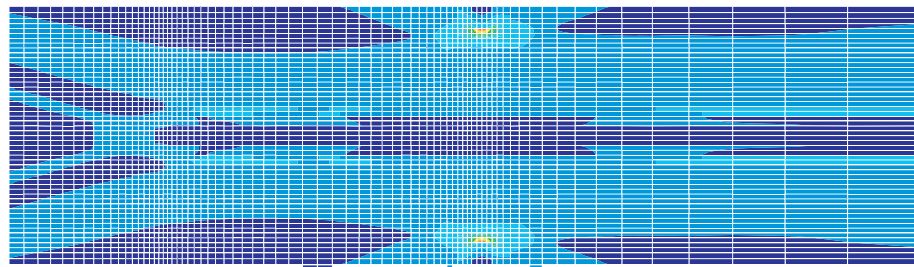
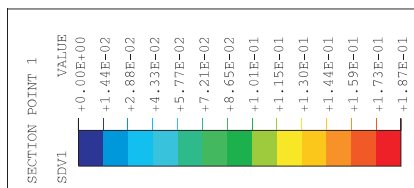
Figure 8-20. PCCV Liner Model, Posttest Analysis, Case 4, Stress Contour, at P = 3.3 Pd
(Stresses in psi; multiply by 0.00690 for MPa)



Horizontal Strain

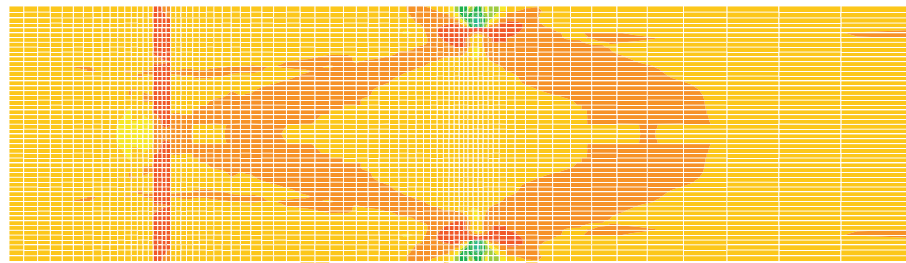
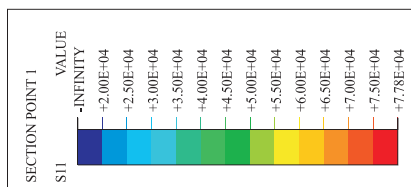


Vertical Strain

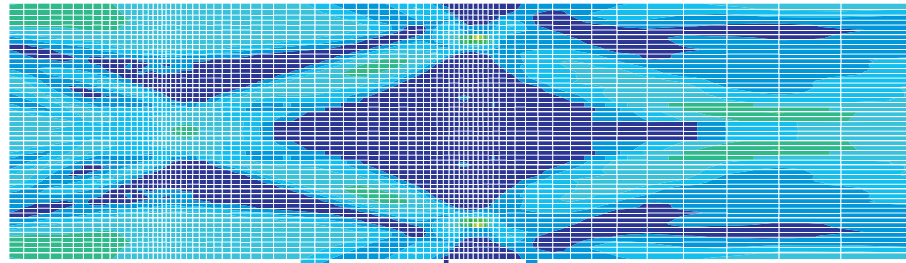
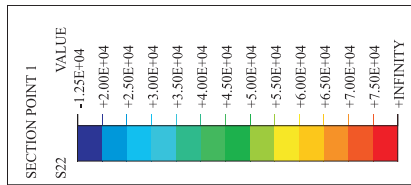


Effective Plastic Strain

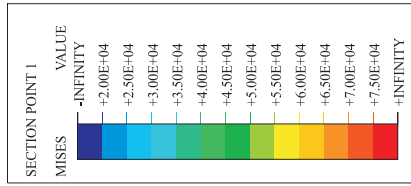
Figure 8-21. PCCV Liner Model, Posttest Analysis, Case 4, Strain Contour, at P = 3.3 Pd



Horizontal Stress

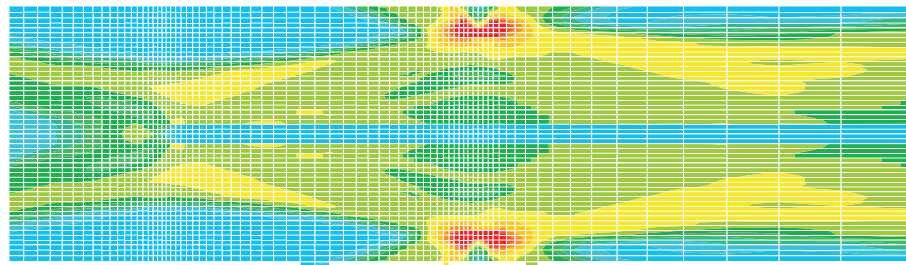
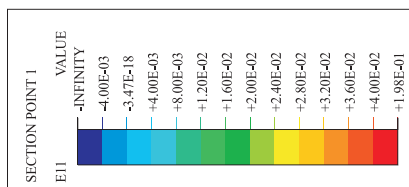


Vertical Stress

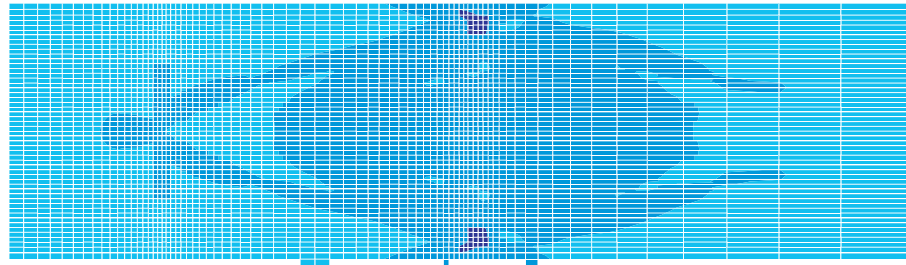
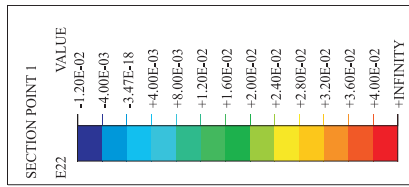


Mises Stress

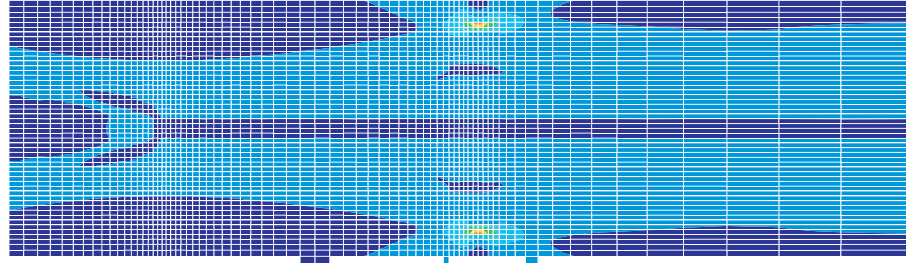
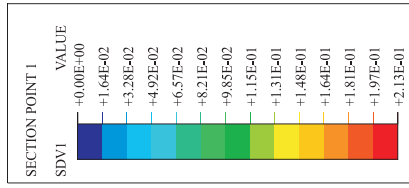
Figure 8-22. PCCV Liner Model, Posttest Analysis, Case 5, Stress Contour, at P = 3.3 Pd
(Stresses in psi; multiply by 0.00690 for MPa)



Horizontal Strains



Vertical Strains



Effective Plastic Strain

Figure 8-23. PCCV Liner Model, Posttest Analysis, Case 5, Stress Contour, at P = 3.3 Pd