

December 18, 2023

L-MT-23-056
10 CFR 54.17

ATTN: Document Control Desk
U.S. Nuclear Regulatory Commission
Washington, DC 20555-0001

Monticello Nuclear Generating Plant
Docket No. 50-263
Renewed Facility Operating License No. DPR-22

Subsequent License Renewal Application Response to Request for Additional Information and Request for Confirmation of Information - Set 1 Part 2

- References:
- 1) Letter from Northern States Power Company, a Minnesota corporation (NSPM), d/b/a Xcel Energy to Document Control Desk, "Monticello Nuclear Generating Plant Docket No. 50-263, Renewal License Number DPR-22 Application for Subsequent Renewal Operating License" dated January 9, 2023, ML23009A353
 - 2) Email from the NRC to Northern States Power Company, a Minnesota corporation (NSPM), d/b/a Xcel Energy, "Monticello, Unit 1, Subsequent License Renewal Application Requests for Confirmation of Information Environmental Review" dated October 23, 2023, ML23291A109
 - 3) Letter from Northern States Power Company, a Minnesota corporation (NSPM), d/b/a Xcel Energy to Document Control Desk, "Monticello Nuclear Generating Plant, Subsequent License Renewal Application Response to Request for Additional Information and Request for Confirmation of Information - Set 1" dated November 21, 2023, ML23332A182

Northern States Power Company, a Minnesota corporation, doing business as Xcel Energy (hereafter "NSPM") is submitting a response to a request for confirmation of information (RCI) and request for additional information (RAI) to the Subsequent License Renewal Application, listed in Reference 1.

In an e-mail from the NRC to NSPM, listed in Reference 2, the NRC transmitted Environmental RCIs and RAIs. The responses to the RCIs and RAIs in Reference 2 were provided in Reference 3, except for RAI GW-5. This submittal provides the response to the RAI GW-5 in the enclosure to this letter.

Document Control Desk

L-MT-23-056

Page 2

Summary of Commitments

This letter makes no new commitments and no revisions to existing commitments.

I declare under penalty of perjury that the foregoing is true and correct.

Executed on December 18, 2023.

A handwritten signature in black ink, appearing to read 'Shawn Hafen', written over a horizontal line.

Shawn Hafen
Site Vice President, Monticello Nuclear Generating Plant
Northern States Power Company – Minnesota

cc: Administrator, Region III, USNRC
Project Manager, Monticello, USNRC
Resident Inspector, Monticello, USNRC
Minnesota Department of Commerce

Enclosure Index	
Enclosure No.	Subject
01	RAI GW-5 Groundwater

Attachment Index		
Enclosure No.	Attachment No.	Subject
01	1	Figure 2 – Well Locations
01	2	Figure 3 – Detail View
01	3	Figure 4 – Sheetpile Wall and Gradient Control System
01	4	Table 1 – Monticello Nuclear Plant Tritium Monitoring
01	5	Table 2 – MW-9a Non-Tritium Isotopes
01	6	Table 3 – MNGP Environmental Well Information
01	7	Table 4 – MNGP 2022 Static Water Level Elevations
01	8	Table 5 – MNGP 2023 Static Water Level Elevation (Feet)
01	9	Table 6 – Monthly Summary of Pumping Withdrawal Volume (gallons)

Enclosure 01

RAI GW-5 Groundwater

Topic: Water Resources – Groundwater

RAI GW-5:

REQUIREMENT: 10 CFR 51.45(c) and 51.53(c)(2) requires that the ER include a description of the affected environment.

ISSUE: On November 22, 2022, Xcel Energy notified the NRC and State officials that tritium concentrations above the offsite dose calculation manual and Nuclear Energy Initiative Groundwater Protection Initiative reporting levels had been detected in an onsite monitoring well. Section 3.6.4.2.1 of the ER discusses historical inadvertent releases of radionuclides to groundwater, but no discussion or assessment of the November 2022 leak of water containing tritium is provided.

REQUEST: Provide a narrative description of the detection and response to the inadvertent release(s) of tritium into groundwater (first reported in November 2022) through August 18, 2023. This description should include, but not be limited to, the following information:

- (a) The source, volume, and activity of tritium and other radionuclides (if applicable) released, including how these values were estimated,
- (b) Monitoring data that indicated the release(s) had occurred,
- (c) The response taken to stop the release, including a timeline of events,
- (d) A description of and response to the second leak, reported on March 23, 2023,
- (e) A map showing the location of the holding tank that spilled on May 21, 2023, and estimates of the volume spilled and the tritium activity concentration of the holding tank at the time of the spill,
- (f) Maps showing locations of new monitoring wells and tritium recovery wells installed in response to the release(s),
- (g) Maps showing the extent of tritium in groundwater since the occurrence of the release(s), and
- (h) New permits or permit changes required as a result of the response.

In addition to the narrative description and maps discussed above, include the following information:

- (a) A well information table updated to include all the wells currently completed on the site. Table to include Well ID, Date Installed, Coordinates of Well, Surface Elevation (ft), Top of Riser ft, Bottom of Well ft, Screened Interval, Depth to Top of Screen ft mean sea level, Depth to Bottom of Screen ft, and Well Purpose.
- (b) A table of hydraulic head measurements for all wells measured during 2022 and 2023. Table to include Well ID, Date of Measurement, Measured Value (feet above mean sea level).
- (c) A table of tritium concentrations for all groundwater samples measured during 2022 and 2023. Table to include Well ID, Date of Measurement, Measured Value (pCi/L). Include data from monitoring wells and pumping (tritium recovery) wells.

- (d) Data that confirm the extent or absence of other radionuclides in groundwater following the November 2022 release.
- (e) A table of pumping rate or withdrawal volume as a function of time during 2022 and 2023 for the wells being pumped in response to the tritium release. Table to include Well ID, Date, Pumping Rate or Cumulative Volume Pumped (gpm or gal).
- (f) A table of tritium concentrations for all surface water samples measured during 2022 and 2023. Table to include Sample Location, Date of Measurement, Measured Value (pCi/L).
- (g) A description of the current plan, subject to change, for remediation/mitigation of the groundwater tritium contamination, including:
 - location of the cutoff wall,
 - locations of hydraulic control pumping wells,
 - estimated pumping rates of the hydraulic control pumping wells,
 - disposition of the water pumped for hydraulic control,
 - criteria to terminate pumping of tritium recovery wells and hydraulic control wells, and
 - estimated time to remediate the tritium contamination.

Response to RAI GW-5:

Request (1a)

The source of the leak was 3-inch condensate to control rod drive (CRD) suction line pipe between the reactor building and the turbine building.

The estimated volume of water lost was $829,000 \pm 68,100$ gallons and the estimated activity was 13.9 ± 1.2 Curie (Ci) of tritium based on a water balance. The total activity from Iodine and Xenon species was 0.08 ± 0.015 Ci, which when combined with the tritium results in a total activity of 14.0 ± 1.2 Ci.

Request (1b)

On November 21, 2022, a sample was taken in Monitoring Well #9a (MW-9a), which had a measured tritium value of approximately $5.02E+6$ pCi/l. MW-9a is also referred to as MW-9, and is located adjacent to the turbine and reactor building.

On November 22, 2022, a confirmation sample was taken from MW-9a which detected tritium concentrations above the Safe Drinking Water Act (SDWA) limit of 20,000 pCi/l, measured at approximately $5.02E+6$ pCi/l as well as short-lived isotopes, and was reported to the NRC and State of Minnesota (Event Notification 56236). The initial tritium value was measured with an onsite instrument and a log of these measurements can be seen in Table 1 – Monticello Nuclear Plant Tritium Monitoring. In addition, other radionuclides were detected in MW-9a, as noted in Table 2 – MW-9a Non-Tritium Isotopes.

Request (1c)

- November 21, 2022: Initial sample of MW-9a was approximately 5.02E+6 pCi/l of tritium.
- November 22, 2022: Confirmation sample confirmed MW-9a was approximately 5.02E+6 pCi/l of tritium.
- November 22, 2022: Event Notification 56236 was sent to the NRC and State of Minnesota.
- November 22, 2022: Site investigation efforts began to identify the source of the leak.
- December 21, 2022: Leak location was identified and flow diversion started.
- December 29, 2022: Removed additional grout on the turbine building to begin installing the catch basin and monitoring continued for tritium.
- March 23, 2023: Sampling indicated that there was a step change and the leakage was being diverted from the catchment, as indicated by increasing levels.
- March 24, 2023: Operations began to maneuver the plant to proper mode and equipment line-up to facilitate the permanent repair of the leaking CRD suction pipe.
- March 25, 2023: The CRD suction pipe was removed, the piping defect was confirmed. The original carbon steel piping was replaced with a stainless steel pipe.

Request (1d)

As stated in the answer to Request (1c), there was a step change and the leakage was being diverted from the catchment on March 23, 2023. On March 24, 2023, Operations began to maneuver the plant to proper mode and equipment line-up to facilitate the permanent repair of the leaking CRD suction pipe, and the pipe was replaced on March 25, 2023.

Request (1e)

Event Notification 56535 estimated that between 300-600 gallons overflowed a holding tank. Figure 1 below shows a side view of the approximate location where this spill occurred on May 21, 2023. The estimated tritium activity concentration in the tank was 1.94E+5 pCi/l of tritium based on a sample from pumping well 12a.



Figure 1 – Side View of the Approximate Spill Location on May 21, 2023.

Request (1f)

Figure 2 – Well Locations and Figure 3 – Detail View – show the location of the new monitoring wells and tritium recovery wells that have been installed as of August 18, 2023.

Request (1g)

Figure 3 provides a map of the estimated extent of tritium in groundwater as of August 18, 2023.

Request (1h)

As of August 18, 2023, there were three permits that were updated and/or changed because of the response to the ground water response.

1. The Minnesota Pollution Control Agency (MPCA) aboveground storage tanks permit was issued on May 19, 2023.
2. The retention pond National Pollutant Discharge Elimination System (NPDES) approval by the MPCA was issued August 11, 2023. No changes to the NPDES permit required.
3. The Monticello city grading approval for the pond was issued on June 2, 2023.

In addition to the narrative description and maps discussed above, the following information is provided:

Request (2a)

Table 3 – MNGP Environmental Well Information – has data dated August 31, 2023, and was created on October 31, 2023. The table includes the Well ID, Date Installed, Coordinates of Well, Surface Evaluation (ft), Top of Riser (ft), Bottom of Well (ft), Screened Interval, Depth to Top of Screen (ft), Depth to Bottom of Screen (ft), and Well Purpose.

Request (2b)

Table 4 – MNGP 2022 Static Water Level Elevations – has the hydraulic head measurements for all wells measured during 2022.

Table 5 – MNGP 2023 Static Water Level Elevation (Feet) – has the hydraulic head measurements for all wells measured during 2023.

The tables include the Well ID, Date of Measurement, and Measured Value (feet above mean sea level).

Request (2c)

Table 1 shows the tritium concentrations for all groundwater samples measured during 2022 and 2023. This table includes Well ID, Date of Measurement, Measured Value (pCi/L). Table 1 has data through August 18, 2023.

Request (2d)

Table 2 lists the data that confirms there were indications of other radionuclides in the groundwater following the November 2022 release. Table 2 has data through September 18, 2023.

Request (2e)

Table 6 – Monthly Summary of Pumping Withdrawal Volume (gallons) – provides the monthly summary of pumping withdrawal volume during 2023 for the wells being pumped in response to the tritium release. Table 6 includes the Well ID, Month, and Cumulative Volume Pumped in gallons and provides data through October 2023. Pumping withdrawals did not occur in 2022.

Request (2f)

Table 1 lists the tritium concentration for all surface water samples, upstream and downstream, measured during the 2022 and 2023 event response activities. Table 1 includes Sample Locations, Date of Measurement, Measured Value (pCi/L) and the data is through August 18, 2023.

Request (2g)

As of August 18, 2023, Figure 4 shows the approximate location of the sheetpile containment structure (cutoff wall) and the proposed approximate location for the gradient control wells and discharge piping.

The estimated pumping rates for the gradient control wells are 100-200 gallons per minute. The rates will adjust based on river level and hydraulic conditions at the station (i.e., drought versus flooding). The gradient control wells will be issued a water appropriation permit by Minnesota Department of Natural Resources. The gradient control wells will likely be discharged into the intake as shown in Figure 4.

NSPM remains dedicated to remediation of tritium in the groundwater and working with stakeholders to determine the appropriate steps that represents a successful completion of the

remediation efforts. As the sheetpile containment structure and gradient control wells have not been finished, it is difficult to predict the time required to achieve the cleanup criteria.

References:

None.

Associated Attachments:

1. Figure 2 – Well Locations
2. Figure 3 – Detail View
3. Figure 4 – Sheetpile Wall and Gradient Control System
4. Table 1 – Monticello Nuclear Plant Tritium Monitoring
5. Table 2 – MW-9a Non-Tritium Isotopes
6. Table 3 – MNGP Environmental Well Information
7. Table 4 – MNGP 2022 Static Water Level Elevations
8. Table 5 – MNGP 2023 Static Water Level Elevation (Feet)
9. Table 6 – Monthly Summary of Pumping Withdrawal Volume (gallons)

Enclosure 01

Attachment 1

Figure 2 – Well Locations

Monticello Nuclear Generating Plant
Docket 50-263

See Detail View on Figure 3

Mississippi River

Water Supply Well

Water Supply Well

Water Supply Well

Water Supply Well

MW-7

MW-8

Water Supply Well









Water Supply Well

Water Supply Well

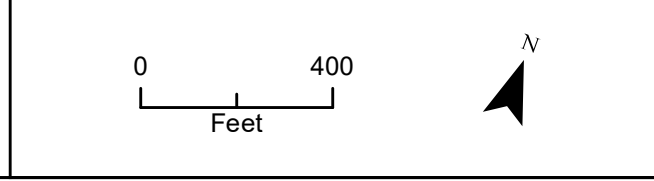
MW-101A

MW-102A

MW-103A

-  Water Table Monitoring Well
-  Deep Monitoring Well
-  Recovery Well
-  Gradient Control Well
-  Water Supply Well
-  A-horizon Estimated Extent of Tritium Impact (08/18/2023)
-  Tritium >20,000 pCi/L
-  Storage Pond Location

Document Path: Z:\GIS\1 - Projects\XCEL\4583-04 2022 Tritium Inv\Figures_OpenHouse\Figure 1-2_Updates\081823 - NRCApp\Figure 1 - Well Locations 11x17.mxd



XCEL ENERGY, INC.
 2807 West County Road 75
 Monticello, MN 55362

**MONTICELLO NUCLEAR GENERATING
 PLANT WELL LOCATIONS**
 Monticello Nuclear Generating Plant
 Monticello, Minnesota

**FIGURE 2
 WELL LOCATIONS
 (08/18/2023)**

Enclosure 01

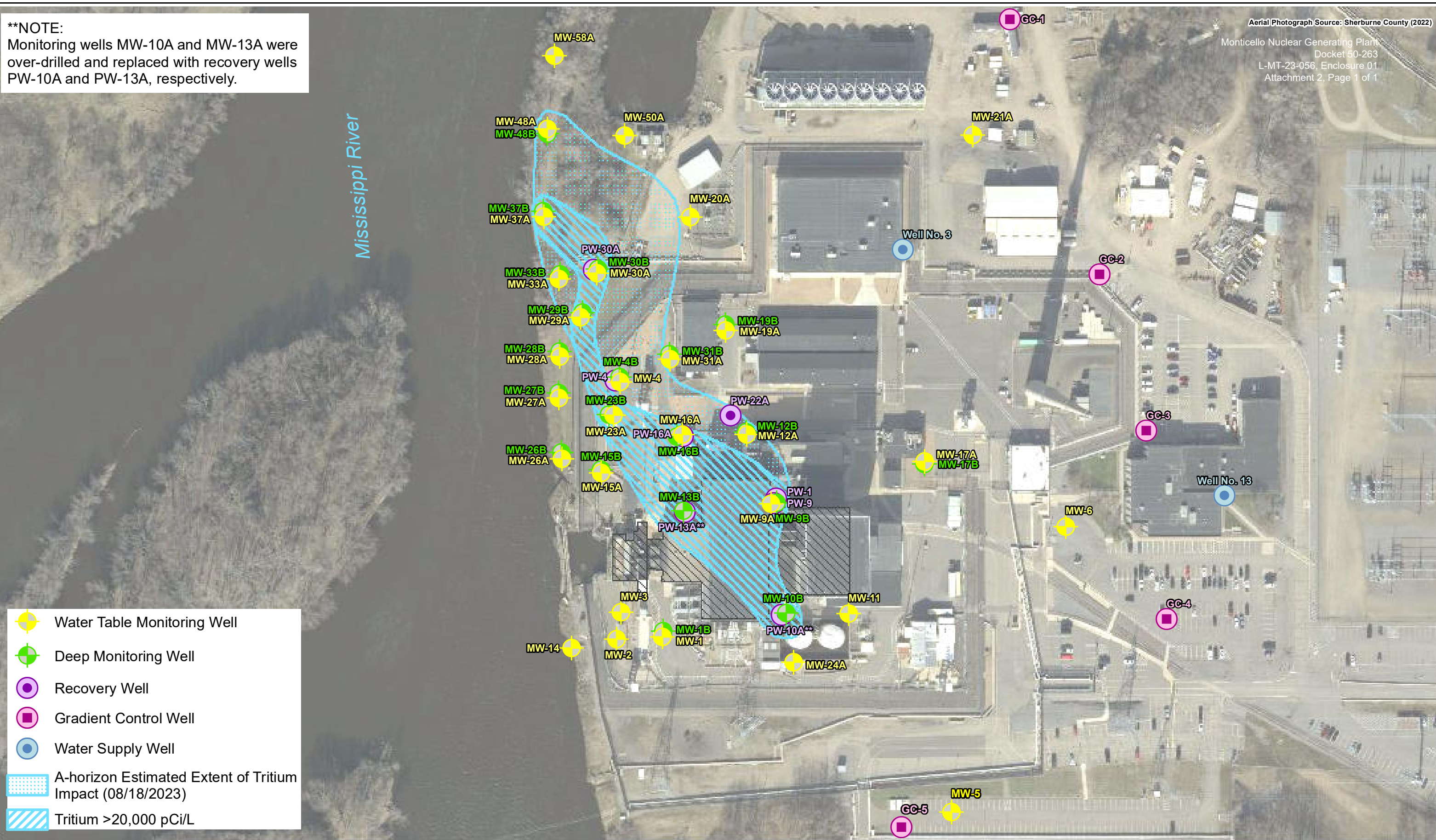
Attachment 2

Figure 3 – Detail View

****NOTE:**
Monitoring wells MW-10A and MW-13A were over-drilled and replaced with recovery wells PW-10A and PW-13A, respectively.

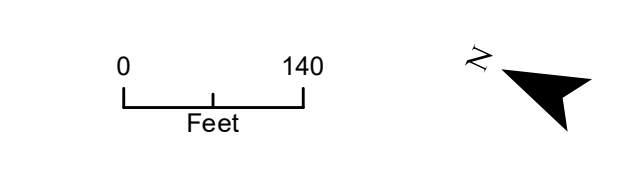
Aerial Photograph Source: Sherburne County (2022)
Monticello Nuclear Generating Plant
Docket 50-263
L-MT-23-056, Enclosure 01
Attachment 2, Page 1 of 1

Mississippi River



- Water Table Monitoring Well
- Deep Monitoring Well
- Recovery Well
- Gradient Control Well
- Water Supply Well
- A-horizon Estimated Extent of Tritium Impact (08/18/2023)
- Tritium >20,000 pCi/L

Document Path: P:\GIS1 - Projects\XCEL\4583-04 2022 Tritium Inv\Figures_OpenHouse\Figure 1-2_Updates\081823 - NRCApp\Figure 2 - Detail view 11x17.mxd



XCEL ENERGY, INC.
2807 West County Road 75
Monticello, MN 55362

MONTICELLO NUCLEAR GENERATING PLANT WELL LOCATIONS
Monticello Nuclear Generating Plant
Monticello, Minnesota

FIGURE 3
DETAIL VIEW
(08/18/2023)








Enclosure 01

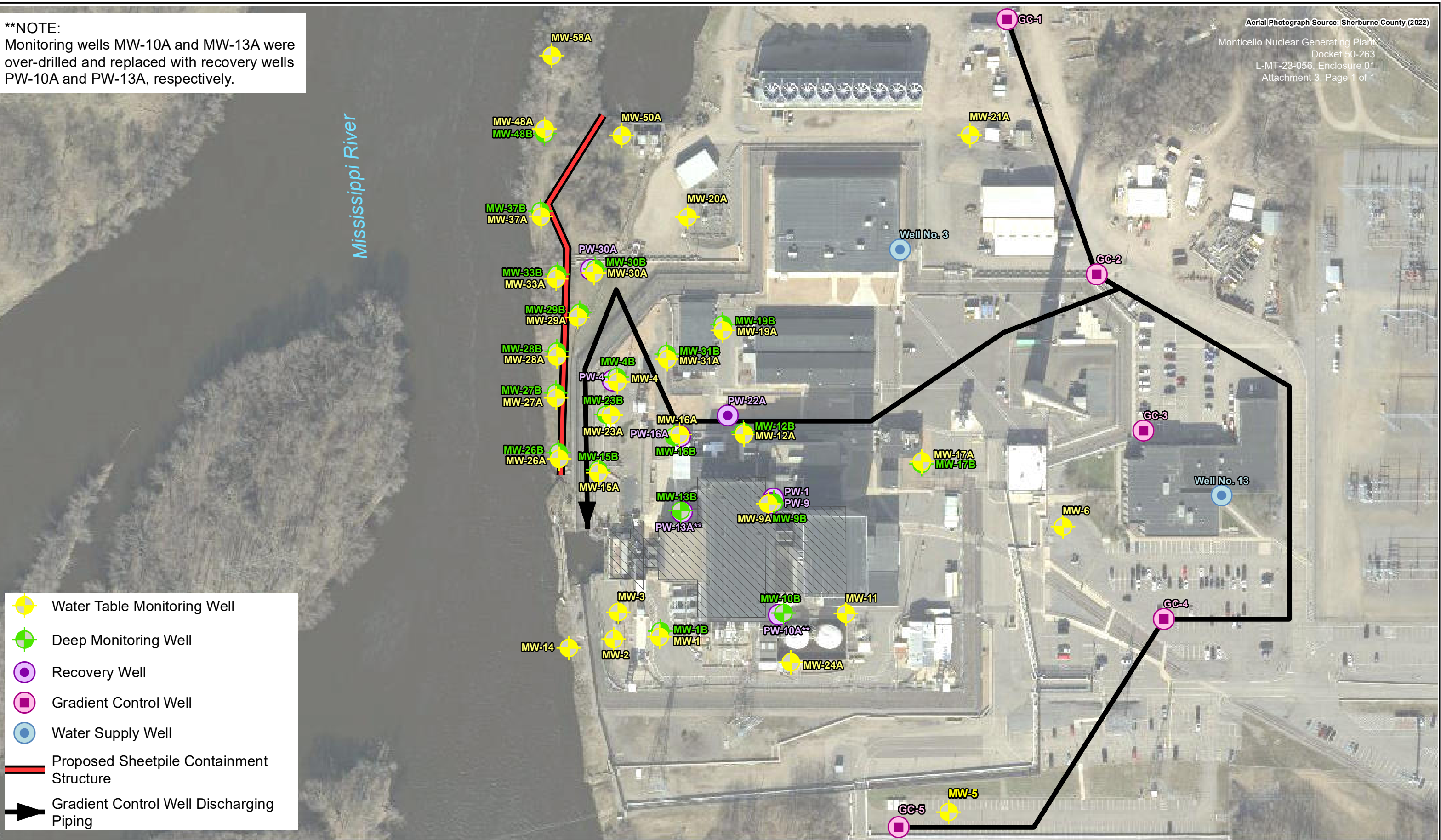
Attachment 3

Figure 4 – Sheetpile Wall and Gradient Control System

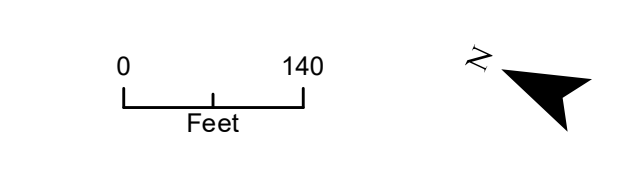
****NOTE:**
Monitoring wells MW-10A and MW-13A were over-drilled and replaced with recovery wells PW-10A and PW-13A, respectively.

Mississippi River

-  Water Table Monitoring Well
-  Deep Monitoring Well
-  Recovery Well
-  Gradient Control Well
-  Water Supply Well
-  Proposed Sheetpile Containment Structure
-  Gradient Control Well Discharging Piping



Document Path: P:\GIS11 - Projects\XCEL\4583-04 2022 Tritium In\Figures_OpenHouse\Figure 1-2_Updates\081823 - NRCApp\Figure 3 - SPand GC System.mxd



XCEL ENERGY, INC.
2807 West County Road 75
Monticello, MN 55362

MONTICELLO NUCLEAR GENERATING PLANT WELL LOCATIONS
Monticello Nuclear Generating Plant
Monticello, Minnesota

FIGURE 4 SHEETPILE WALL AND GRADIENT CONTROL SYSTEM

Enclosure 01

Attachment 4

Table 1 – Monticello Nuclear Plant Tritium Monitoring

Table 1: Monticello Nuclear Plant Tritium Monitoring
Date of Data: 8/18/2023

Well	Sample Frequency	Element	Activity	Monday	Tuesday	Wednesday	Thursday	Friday	Saturday	Sunday
				11/21/22	11/22/22	11/23/22	11/24/22	11/25/22	11/26/22	11/27/22
MW-1	1x/week	Tritium	(pCi/L)							
MW-1B	1x/week	Tritium	(pCi/L)							
MW-2		Tritium	(pCi/L)							
MW-3		Tritium	(pCi/L)							
PW-4 (old MW4A)	1x/week	Tritium	(pCi/L)							
MW-4B		Tritium	(pCi/L)							
MW-9A	2x/week	Tritium	(pCi/L)	5.02E+06	5.02E+06					
MW-9B	2x/week	Tritium	(pCi/L)		2.54E+04					
MW-10A	1x/week	Tritium	(pCi/L)							
MW-10B	1x/week	Tritium	(pCi/L)							
MW-11	1x/week	Tritium	(pCi/L)							
MW-12A	1x/week	Tritium	(pCi/L)		< Detect	< Detect	< Detect	< Detect	< Detect	< Detect
MW-12B	1x/week	Tritium	(pCi/L)		< Detect	< Detect	< Detect	< Detect	< Detect	< Detect
MW-13A	2x/week	Tritium	(pCi/L)		< Detect	< Detect	< Detect	< Detect	< Detect	< Detect
MW-13B	1x/week	Tritium	(pCi/L)		< Detect	< Detect	< Detect	< Detect	< Detect	< Detect
MW-14		Tritium	(pCi/L)							
MW-15A	1x/week	Tritium	(pCi/L)		< Detect	< Detect	< Detect	< Detect	< Detect	< Detect
MW-15B		Tritium	(pCi/L)		< Detect	< Detect	< Detect	< Detect	< Detect	< Detect
MW-16A	1x/week	Tritium	(pCi/L)							
MW-16B	1x/week	Tritium	(pCi/L)							
PW-16A	1x/week	Tritium	(pCi/L)							
MW-17A		Tritium	(pCi/L)							
MW-17B		Tritium	(pCi/L)							
MW-19A		Tritium	(pCi/L)							
MW-19B		Tritium	(pCi/L)							
MW-20A	1x/week	Tritium	(pCi/L)							
MW-23A	1x/week	Tritium	(pCi/L)							
MW-23B	1x/week	Tritium	(pCi/L)							
MW-24A	1x/week	Tritium	(pCi/L)							
MW-26A	1x/week	Tritium	(pCi/L)							
MW-26B		Tritium	(pCi/L)							
MW-27A	1x/week	Tritium	(pCi/L)							
MW-27B		Tritium	(pCi/L)							
MW-28A	1x/week	Tritium	(pCi/L)							
MW-28B		Tritium	(pCi/L)							
MW-29A	1x/week	Tritium	(pCi/L)							
MW-29B		Tritium	(pCi/L)							
MW-30A	1x/week	Tritium	(pCi/L)							
MW-30B	1x/week	Tritium	(pCi/L)							
PW-30	1x/week	Tritium	(pCi/L)							
MW-31A	1x/week	Tritium	(pCi/L)							
MW-31B	1x/week	Tritium	(pCi/L)							
MW-33A	1x/week	Tritium	(pCi/L)							
MW-33B		Tritium	(pCi/L)							
MW-37A	1x/week	Tritium	(pCi/L)							
MW-37B		Tritium	(pCi/L)							
MW-48A	1x/week	Tritium	(pCi/L)							
MW-48B		Tritium	(pCi/L)							
MW-50A	1x/week	Tritium	(pCi/L)							
MW-58A	1x/week	Tritium	(pCi/L)							
River, Upstream*	1x/week	Tritium	(pCi/L)							
River, Downstream*	2x per week	Tritium	(pCi/L)							

Disclaimers Regarding Results:

- All sample results are considered preliminary as the samples are being processed by the MNGP lab.
 - MNGP lab is not certified for the analysis therefore analytical results are considered indicative of actual tritium levels.
 - The minimum detectable level (MDL) typically fall between 500-700 pCi/L for the MNGP lab samples.
 - The official results will be reported in the annual report for 2023.
 - Began recovering water from MW9A and MW9B on 1/10/2023 at a rate of 0.5 gpm total.
 - Began recovering water from MW12A on 1/17/2023 at a rate of 2 gpm.
 - Began weekly river sampling the week of 4/10/2023.
 - Red boxes cells are sample results processed at Environmental Isotope Laboratory, University of Waterloo. MDL 19 pCi/L. Error range +/- 13 pCi/L.
- * - Sample taken at ODCM Monitoring Point downstream of plant discharge canal.

	Thursday	Friday	Saturday	Sunday	Monday	Tuesday	Wednesday	Thursday	Friday	Saturday
Well	2/16/23	2/17/23	2/18/23	2/19/23	2/20/23	2/21/23	2/22/23	2/23/23	2/24/23	2/25/23
MW-1										
MW-1B										
MW-2										
MW-3										
PW-4 (old MW4A)	< Detect					< Detect				
MW-4B										
MW-9A	3.76E+06	3.76E+06			3.62E+06		3.10E+06		2.97E+06	
MW-9B	3.20E+06	3.03E+06			3.09E+06		2.82E+06			
MW-10A		< Detect								
MW-10B		< Detect								
MW-11										
MW-12A	3.08E+05				2.89E+05					
MW-12B	< Detect									
MW-13A	< Detect					< Detect				
MW-13B	< Detect									
MW-14										
MW-15A	< Detect					< Detect				
MW-15B										
MW-16A	9.20E+05	1.14E+06			1.62E+06					
MW-16B	< Detect									
PW-16A										
MW-17A										
MW-17B										
MW-19A	< Detect					< Detect				
MW-19B										
MW-20A										
MW-23A										
MW-23B										
MW-24A										
MW-26A										
MW-26B										
MW-27A										
MW-27B										
MW-28A										
MW-28B										
MW-29A										
MW-29B										
MW-30A										
MW-30B										
PW-30										
MW-31A										
MW-31B										
MW-33A										
MW-33B										
MW-37A										
MW-37B										
MW-48A										
MW-48B										
MW-50A										
MW-58A										
River, Upstream*										
River, Downstream*										

Weather prevented sampling due to personnel safety concerns.

	Saturday	Sunday	Monday	Tuesday	Wednesday	Thursday	Friday	Saturday	Sunday	Monday
Well	3/18/23	3/19/23	3/20/23	3/21/23	3/22/23	3/23/23	3/24/23	3/25/23	3/26/23	3/27/23
MW-1										
MW-1B										
MW-2										
MW-3										
PW-4 (old MW4A)				< Detect		< Detect			< Detect	
MW-4B										
MW-9A				2.43E+06	2.45E+06	2.18E+06	2.11E+06	2.08E+06	1.85E+06	1.48E+06
MW-9B				2.16E+05						1.47E+05
MW-10A					< Detect					< Detect
MW-10B					< Detect					< Detect
MW-11										
MW-12A				4.47E+05	4.43E+05	4.50E+05			3.70E+05	
MW-12B				< Detect						< Detect
MW-13A			4.68E+03	3.72E+03	5.48E+03	4.87E+03	6.10E+03			1.97E+04
MW-13B				< Detect						< Detect
MW-14										
MW-15A				< Detect		< Detect			< Detect	
MW-15B										
MW-16A			1.39E+05	1.22E+05	1.21E+05	1.08E+05	8.99E+04			5.74E+04
MW-16B				< Detect						< Detect
PW-16A			4.44E+05	4.29E+05	4.32E+05	4.16E+05	4.03E+05			4.23E+05
MW-17A										
MW-17B										
MW-19A				< Detect		< Detect			< Detect	
MW-19B										
MW-20A										
MW-23A			< Detect				< Detect		< Detect	
MW-23B			< Detect							
MW-24A										
MW-26A										
MW-26B										
MW-27A										
MW-27B										
MW-28A										
MW-28B										
MW-29A										
MW-29B										
MW-30A										
MW-30B										
PW-30										
MW-31A										
MW-31B										
MW-33A										
MW-33B										
MW-37A										
MW-37B										
MW-48A										
MW-48B										
MW-50A										
MW-58A										
River, Upstream*					2.48E+01					
River, Downstream*					5.34E+01					

	Tuesday	Wednesday	Thursday	Friday	Saturday	Sunday	Monday	Tuesday	Wednesday	Thursday
Well	3/28/23	3/29/23	3/30/23	3/31/23	4/1/23	4/2/23	4/3/23	4/4/23	4/5/23	4/6/23
MW-1										
MW-1B										
MW-2										
MW-3										
PW-4 (old MW4A)		< Detect				< Detect			< Detect	
MW-4B										
MW-9A	1.31E+06	1.23E+06	1.13E+06	1.07E+06			8.68E+05			9.88E+05
MW-9B								9.47E+04		
MW-10A									< Detect	
MW-10B									< Detect	
MW-11										
MW-12A		1.08E+05				2.51E+04			1.70E+04	
MW-12B									< Detect	
MW-13A	1.11E+04	1.08E+04	1.36E+04	1.64E+04			3.41E+04			3.39E+04
MW-13B									< Detect	
MW-14										
MW-15A		< Detect				< Detect			< Detect	
MW-15B										
MW-16A	6.95E+04	5.42E+04	4.67E+04	3.36E+04			9.46E+03			3.49E+03
MW-16B									< Detect	
PW-16A	4.06E+05	4.12E+05	3.77E+05	4.03E+05			3.87E+05			3.59E+05
MW-17A										
MW-17B										
MW-19A		< Detect				< Detect			< Detect	
MW-19B										
MW-20A										
MW-23A		< Detect				< Detect			< Detect	
MW-23B	< Detect								< Detect	
MW-24A										
MW-26A										
MW-26B										
MW-27A										
MW-27B										
MW-28A										
MW-28B										
MW-29A										
MW-29B										
MW-30A										
MW-30B										
PW-30										
MW-31A										
MW-31B										
MW-33A										
MW-33B										
MW-37A										
MW-37B										
MW-48A										
MW-48B										
MW-50A										
MW-58A										
River, Upstream*		3.74E+01							< Detect	
River, Downstream*		6.18E+01							2.74E+01	

	Thursday	Friday	Saturday	Sunday	Monday	Tuesday	Wednesday	Thursday	Friday	Saturday
Well	4/27/23	4/28/23	4/29/23	4/30/23	5/1/23	5/2/23	5/3/23	5/4/23	5/5/23	5/6/23
MW-1										
MW-1B										
MW-2										
MW-3										
PW-4 (old MW4A)				< Detect			< Detect			
MW-4B										
MW-9A				1.68E+06			1.30E+06			
MW-9B							1.70E+04			
MW-10A	1.23E+06			1.32E+06			1.34E+06			
MW-10B							< Detect			
MW-11										
MW-12A				1.45E+05			1.57E+05			
MW-12B							6.90E+02			
MW-13A				4.72E+05			4.32E+05			
MW-13B						< Detect				
MW-14										
MW-15A				< Detect			< Detect			
MW-15B										
MW-16A				1.33E+05			5.26E+04			
MW-16B						< Detect				
PW-16A						1.71E+05	1.60E+05			
MW-17A										
MW-17B										
MW-19A				< Detect			< Detect			
MW-19B										
MW-20A										
MW-23A				< Detect			< Detect			
MW-23B						< Detect				
MW-24A										
MW-26A										
MW-26B										
MW-27A										
MW-27B										
MW-28A										
MW-28B										
MW-29A										
MW-29B										
MW-30A										
MW-30B										
PW-30										
MW-31A										
MW-31B										
MW-33A										
MW-33B										
MW-37A										
MW-37B										
MW-48A										
MW-48B										
MW-50A										
MW-58A										
River, Upstream*							< Detect			
River, Downstream*							< Detect			

	<i>Sunday</i>	<i>Monday</i>	<i>Tuesday</i>	<i>Wednesday</i>	<i>Thursday</i>	<i>Friday</i>	<i>Saturday</i>	<i>Sunday</i>	<i>Monday</i>	<i>Tuesday</i>
Well	5/7/23	5/8/23	5/9/23	5/10/23	5/11/23	5/12/23	5/13/23	5/14/23	5/15/23	5/16/23
MW-1										
MW-1B										
MW-2										
MW-3										
PW-4 (old MW4A)	< Detect			< Detect				< Detect		
MW-4B										
MW-9A	1.22E+06			1.25E+06				1.02E+06		
MW-9B			1.62E+05							1.53E+04
MW-10A	1.35E+06			1.35E+06				1.30E+06		
MW-10B				< Detect					< Detect	
MW-11			< Detect							
MW-12A	2.13E+05		1.84E+05					1.94E+05		
MW-12B		9.82E+02							< Detect	
MW-13A	4.26E+05			3.94E+05				3.61E+05		
MW-13B		< Detect							< Detect	
MW-14										
MW-15A	< Detect	< Detect						< Detect		
MW-15B										
MW-16A	4.28E+04			3.17E+04				5.99E+03		
MW-16B				< Detect						< Detect
PW-16A				1.73E+05						
MW-17A										
MW-17B										
MW-19A	< Detect			< Detect				< Detect		
MW-19B										
MW-20A										
MW-23A	< Detect			< Detect				< Detect		
MW-23B			< Detect							< Detect
MW-24A										
MW-26A										
MW-26B										
MW-27A										
MW-27B										
MW-28A										
MW-28B										
MW-29A										
MW-29B										
MW-30A										
MW-30B										
PW-30										
MW-31A										
MW-31B										
MW-33A										
MW-33B										
MW-37A										
MW-37B										
MW-48A										
MW-48B										
MW-50A										
MW-58A										
River, Upstream*				< Detect						
River, Downstream*				< Detect						

	Wednesday	Thursday	Friday	Saturday	Sunday	Monday	Tuesday	Wednesday	Thursday	Friday
Well	5/17/23	5/18/23	5/19/23	5/20/23	5/21/23	5/22/23	5/23/23	5/24/23	5/25/23	5/26/23
MW-1										
MW-1B										
MW-2										
MW-3										
PW-4 (old MW4A)			< Detect					< Detect		
MW-4B										
MW-9A		1.10E+06					1.02E+06	1.06E+06		
MW-9B								1.19E+04		
MW-10A		1.22E+06								7.62E+05
MW-10B										< Detect
MW-11										< Detect
MW-12A										7.43E+04
MW-12B										< Detect
MW-13A		3.71E+05								6.39E+05
MW-13B										< Detect
MW-14										
MW-15A			< Detect					< Detect		
MW-15B										
MW-16A			5.34E+03							2.93E+03
MW-16B										
PW-16A										
MW-17A										
MW-17B										
MW-19A			< Detect							
MW-19B										
MW-20A										
MW-23A			< Detect							
MW-23B										
MW-24A										
MW-26A										
MW-26B										
MW-27A										
MW-27B										
MW-28A										
MW-28B										
MW-29A										
MW-29B										
MW-30A										
MW-30B										
PW-30										
MW-31A										
MW-31B										
MW-33A										
MW-33B										
MW-37A										
MW-37B										
MW-48A										
MW-48B										
MW-50A										
MW-58A										
River, Upstream*	< Detect							< Detect		
River, Downstream*	< Detect							< Detect		

	Saturday	Sunday	Monday	Tuesday	Wednesday	Thursday	Friday	Saturday	Sunday	Monday
Well	5/27/23	5/28/23	5/29/23	5/30/23	5/31/23	6/1/23	6/2/23	6/3/23	6/4/23	6/5/23
MW-1										
MW-1B										
MW-2										
MW-3										
PW-4 (old MW4A)			< Detect				< Detect			
MW-4B										
MW-9A			8.57E+05			7.38E+05				5.77E+05
MW-9B			8.47E+03							2.61E+03
MW-10A			8.62E+05							1.73E+05
MW-10B			< Detect							
MW-11										
MW-12A			5.06E+04				5.34E+04			2.95E+04
MW-12B			< Detect							
MW-13A										1.94E+06
MW-13B			< Detect							
MW-14										
MW-15A			< Detect				< Detect			
MW-15B										
MW-16A			1.96E+03				8.48E+03			2.22E+05
MW-16B			< Detect							
PW-16A						2.71E+05				2.78E+05
MW-17A										
MW-17B										
MW-19A			< Detect				< Detect			
MW-19B										
MW-20A										
MW-23A			< Detect				< Detect			
MW-23B			< Detect							
MW-24A										
MW-26A										
MW-26B										
MW-27A										
MW-27B										
MW-28A										
MW-28B										
MW-29A										
MW-29B										
MW-30A										
MW-30B										
PW-30										
MW-31A										
MW-31B										
MW-33A										
MW-33B										
MW-37A										
MW-37B										
MW-48A										
MW-48B										
MW-50A										
MW-58A										
River, Upstream*					< Detect					
River, Downstream*					< Detect					

	Thursday	Friday	Saturday	Sunday	Monday	Tuesday	Wednesday	Thursday	Friday	Saturday
Well	6/15/23	6/16/23	6/17/23	6/18/23	6/19/23	6/20/23	6/21/23	6/22/23	6/23/23	6/24/23
MW-1										
MW-1B										
MW-2										
MW-3										
PW-4 (old MW4A)		1.01E+03	1.03E+03	1.35E+03	1.46E+03		1.26E+03	2.25E+03	3.05E+03	2.37E+03
MW-4B				< Detect						
MW-9A	3.53E+05				3.02E+05		3.14E+05			
MW-9B		1.65E+04			1.93E+04		2.27E+04			
MW-10A	5.59E+05				5.68E+05		5.52E+05			
MW-10B								< Detect		
MW-11										
MW-12A	1.62E+04				1.12E+04		1.08E+04			
MW-12B		< Detect			< Detect					
MW-13A	1.36E+06				1.42E+06		1.32E+06			
MW-13B					< Detect					
MW-14										
MW-15A		< Detect		< Detect		< Detect	< Detect	< Detect	< Detect	
MW-15B				< Detect						
MW-16A	1.20E+05				1.46E+05		1.70E+05			
MW-16B					< Detect					
PW-16A					1.71E+05					
MW-17A										
MW-17B										
MW-19A	< Detect				< Detect					
MW-19B										
MW-20A										
MW-23A	< Detect			< Detect				1.90E+03	1.71E+03	3.11E+03
MW-23B				< Detect						< Detect
MW-24A		< Detect		< Detect						
MW-26A		< Detect		< Detect		< Detect		< Detect	< Detect	
MW-26B		< Detect		< Detect						
MW-27A		< Detect		< Detect		< Detect		< Detect	< Detect	
MW-27B			< Detect							
MW-28A										
MW-28B										
MW-29A										
MW-29B										
MW-30A										
MW-30B										
PW-30										
MW-31A										
MW-31B										
MW-33A										
MW-33B										
MW-37A										
MW-37B										
MW-48A										
MW-48B										
MW-50A										
MW-58A										
River, Upstream*			< Detect				< Detect			
River, Downstream*							< Detect			

	Sunday	Monday	Tuesday	Wednesday	Thursday	Friday	Saturday	Sunday	Monday	Tuesday
Well	6/25/23	6/26/23	6/27/23	6/28/23	6/29/23	6/30/23	7/1/23	7/2/23	7/3/23	7/4/23
MW-1										
MW-1B										
MW-2										
MW-3										
PW-4 (old MW4A)	2.96E+03	3.32E+03	3.17E+03	3.36E+03	4.65E+03	4.34E+03			5.04E+03	
MW-4B										
MW-9A	3.19E+05									6.45E+05
MW-9B	2.36E+04									3.80E+03
MW-10A	4.86E+05									2.98E+05
MW-10B		< Detect								
MW-11										
MW-12A			1.06E+04							1.27E+04
MW-12B			< Detect							
MW-13A	1.19E+06									9.12E+05
MW-13B		< Detect								
MW-14										
MW-15A	< Detect	< Detect	< Detect	< Detect	< Detect				< Detect	
MW-15B		< Detect								
MW-16A	8.61E+04									3.33E+04
MW-16B	< Detect	< Detect								
PW-16A	1.40E+05									1.33E+05
MW-17A										
MW-17B										
MW-19A			< Detect							
MW-19B										
MW-20A										
MW-23A	3.42E+03	2.43E+03	1.17E+04	2.49E+04	3.24E+04	5.05E+04			8.20E+04	
MW-23B		< Detect			< Detect					
MW-24A						< Detect			< Detect	
MW-26A	< Detect	< Detect	< Detect	< Detect	< Detect					
MW-26B						< Detect			< Detect	
MW-27A	< Detect	< Detect	< Detect	< Detect	< Detect					
MW-27B										
MW-28A										
MW-28B										
MW-29A						< Detect				
MW-29B						< Detect				
MW-30A										
MW-30B										
PW-30										
MW-31A										
MW-31B										
MW-33A										
MW-33B										
MW-37A										
MW-37B										
MW-48A										
MW-48B										
MW-50A										
MW-58A										
River, Upstream*				< Detect						
River, Downstream*				< Detect						

	Wednesday	Thursday	Friday	Saturday	Sunday	Monday	Tuesday	Wednesday	Thursday	Friday
Well	7/5/23	7/6/23	7/7/23	7/8/23	7/9/23	7/10/23	7/11/23	7/12/23	7/13/23	7/14/23
MW-1										
MW-1B										
MW-2										
MW-3										
PW-4 (old MW4A)			MW-4A Overdrilled and converted to PW-4A					2.57E+03	2.73E+03	
MW-4B										
MW-9A			6.36E+05				4.19E+05			2.40E+05
MW-9B			5.62E+03				1.38E+04			9.56E+04
MW-10A			2.74E+05				2.34E+05			2.10E+05
MW-10B										
MW-11										
MW-12A			8.18E+03				5.93E+03			4.35E+05
MW-12B										
MW-13A			8.64E+05				7.85E+05			6.66E+05
MW-13B										
MW-14										
MW-15A		< Detect					< Detect		< Detect	
MW-15B										
MW-16A			1.95E+04				1.79E+04			2.21E+04
MW-16B										
PW-16A			1.27E+05				1.04E+05			
MW-17A										
MW-17B										
MW-19A										
MW-19B										
MW-20A										
MW-23A		1.07E+04						1.14E+05	1.03E+05	
MW-23B										
MW-24A										
MW-26A		< Detect				< Detect			< Detect	
MW-26B										
MW-27A		< Detect				< Detect			< Detect	
MW-27B										
MW-28A									< Detect	
MW-28B										
MW-29A						2.01E+03	2.32E+03	2.32E+03	2.62E+03	
MW-29B						< Detect				
MW-30A							4.53E+04	5.63E+04		
MW-30B						< Detect	< Detect			
PW-30										
MW-31A			< Detect				< Detect		< Detect	
MW-31B						< Detect				
MW-33A										
MW-33B										
MW-37A										
MW-37B										
MW-48A										
MW-48B										
MW-50A										
MW-58A										
River, Upstream*								< Detect		
River, Downstream*								< Detect		< Detect

	Saturday	Sunday	Monday	Tuesday	Wednesday	Thursday	Friday	Saturday	Sunday	Monday
Well	7/15/23	7/16/23	7/17/23	7/18/23	7/19/23	7/20/23	7/21/23	7/22/23	7/23/23	7/24/23
MW-1										
MW-1B										
MW-2										
MW-3										
PW-4 (old MW4A)				8.82E+03		7.32E+03				1.44E+03
MW-4B										
MW-9A				2.52E+05			3.15E+05			
MW-9B				2.97E+04			9.82E+03			
MW-10A				1.98E+05			1.81E+05			
MW-10B										
MW-11										
MW-12A				2.39E+05		2.54E+05				
MW-12B										
MW-13A				6.27E+05						
MW-13B										
MW-14										
MW-15A						< Detect				< Detect
MW-15B										
MW-16A				2.80E+04			2.46E+05			
MW-16B										
PW-16A										
MW-17A										
MW-17B										
MW-19A										
MW-19B										
MW-20A										
MW-23A						8.04E+04				7.31E+04
MW-23B										
MW-24A										
MW-26A				< Detect		1.42E+03				< Detect
MW-26B										
MW-27A				< Detect		< Detect				< Detect
MW-27B										
MW-28A				< Detect		< Detect				< Detect
MW-28B										
MW-29A				3.12E+03		3.47E+03				
MW-29B										
MW-30A										
MW-30B										
PW-30										
MW-31A			< Detect			< Detect				< Detect
MW-31B										
MW-33A										New Well Installed
MW-33B										New Well Installed
MW-37A										New Well Installed
MW-37B										New Well Installed
MW-48A										New Well Installed
MW-48B										New Well Installed
MW-50A										New Well Installed
MW-58A										New Well Installed
River, Upstream*				< Detect						
River, Downstream*		< Detect		< Detect			< Detect	< Detect		< Detect

	Tuesday	Wednesday	Thursday	Friday	Saturday	Sunday	Monday	Tuesday	Wednesday	Thursday
Well	7/25/23	7/26/23	7/27/23	7/28/23	7/29/23	7/30/23	7/31/23	8/1/23	8/2/23	8/3/23
MW-1										
MW-1B										
MW-2										
MW-3										
PW-4 (old MW4A)			1.08E+03					8.43E+02		
MW-4B										
MW-9A	3.95E+05			5.26E+05						9.87E+05
MW-9B	4.89E+03			2.88E+03				1.64E+03		
MW-10A	1.64E+05			1.64E+05				1.56E+05		
MW-10B										
MW-11										
MW-12A	1.37E+03			1.79E+03				1.55E+03		
MW-12B										
MW-13A	6.23E+05			5.74E+05				5.42E+05		
MW-13B										
MW-14										
MW-15A			< Detect				< Detect			
MW-15B										
MW-16A	1.99E+04			1.82E+04				1.56E+04		
MW-16B										
PW-16A								5.84E+04		
MW-17A										
MW-17B										
MW-19A										
MW-19B										
MW-20A										
MW-23A			7.74E+04				7.71E+04			7.17E+04
MW-23B										
MW-24A										
MW-26A			< Detect				< Detect			< Detect
MW-26B										
MW-27A			< Detect				< Detect			< Detect
MW-27B										
MW-28A			< Detect				< Detect			< Detect
MW-28B										
MW-29A	1.04E+04			1.26E+04			1.36E+04			1.73E+04
MW-29B										
MW-30A										
MW-30B										
PW-30			5.36E+04				5.08E+04			4.34E+04
MW-31A			< Detect				< Detect			< Detect
MW-31B										
MW-33A			3.02E+03							
MW-33B			< Detect							
MW-37A			3.50E+03							
MW-37B			< Detect							
MW-48A			< Detect							
MW-48B			< Detect							
MW-50A			< Detect							
MW-58A			< Detect							
River, Upstream*										
River, Downstream*		<Detect		<Detect			<Detect		<Detect	

	Friday	Saturday	Sunday	Monday	Tuesday	Wednesday	Thursday	Friday	Saturday	Sunday
Well	8/4/23	8/5/23	8/6/23	8/7/23	8/8/23	8/9/23	8/10/23	8/11/23	8/12/23	8/13/23
MW-1										
MW-1B										
MW-2										
MW-3										
PW-4 (old MW4A)	9.66E+02				8.56E+02			7.45E+02		
MW-4B										
MW-9A					1.33E+06			8.72E+05		
MW-9B	1.36E+03				2.90E+03			2.41E+03		
MW-10A	1.41E+05				1.35E+05			1.19E+05		
MW-10B										
MW-11										
MW-12A	1.67E+03				1.32E+03			1.38E+03		
MW-12B										
MW-13A	4.85E+05				3.89E+05			3.39E+05		
MW-13B										
MW-14										
MW-15A	< Detect				< Detect	< Detect				
MW-15B										
MW-16A	4.20E+04				2.00E+04			2.94E+04		
MW-16B										
PW-16A	4.66E+04				6.29E+04			5.75E+04		
MW-17A										
MW-17B										
MW-19A										
MW-19B										
MW-20A										
MW-23A				5.81E+04		5.67E+04				
MW-23B										
MW-24A										
MW-26A				< Detect		< Detect				
MW-26B										
MW-27A				< Detect		< Detect				
MW-27B										
MW-28A				< Detect		< Detect				
MW-28B										
MW-29A				2.45E+04		2.81E+04				
MW-29B										
MW-30A										
MW-30B										
PW-30				3.61E+04		3.37E+04				
MW-31A					< Detect	< Detect				
MW-31B										
MW-33A					< Detect					
MW-33B										
MW-37A					1.05E+04					
MW-37B										
MW-48A										
MW-48B										
MW-50A										
MW-58A										
River, Upstream*						< Detect				
River, Downstream*	< Detect	< Detect		< Detect		< Detect		< Detect	< Detect	

	<i>Monday</i>	<i>Tuesday</i>	<i>Wednesday</i>	<i>Thursday</i>	<i>Friday</i>
Well	8/14/23	8/15/23	8/16/23	8/17/23	8/18/23
MW-1		< Detect			
MW-1B		< Detect			
MW-2					
MW-3					
PW-4 (old MW4A)		< Detect			
MW-4B					
MW-9A	4.40E+05				3.90E+05
MW-9B	1.19E+04				1.65E+04
MW-10A		1.20E+05			
MW-10B		< Detect			
MW-11		< Detect			
MW-12A		1.56E+03			
MW-12B		2.17E+04			1.87E+04
MW-13A		3.19E+05		2.97E+05	
MW-13B		< Detect			
MW-14					
MW-15A		< Detect			
MW-15B					
MW-16A		2.41E+04			
MW-16B		1.48E+04			1.38E+04
PW-16A		6.21E+04			
MW-17A					
MW-17B					
MW-19A					
MW-19B					
MW-20A				< Detect	
MW-23A		5.86E+04			
MW-23B		< Detect			
MW-24A		< Detect			
MW-26A				< Detect	
MW-26B					
MW-27A				< Detect	
MW-27B					
MW-28A				< Detect	
MW-28B					
MW-29A				3.73E+04	
MW-29B					
MW-30A				6.20E+03	
MW-30B				< Detect	
PW-30				2.05E+04	
MW-31A		< Detect			
MW-31B		2.60E+03			
MW-33A				8.33E+02	
MW-33B					
MW-37A	1.81E+04				2.10E+04
MW-37B					
MW-48A					8.22E+02
MW-48B					
MW-50A					< Detect
MW-58A					< Detect
River, Upstream*			< Detect		
River, Downstream*	< Detect		< Detect		< Detect

Enclosure 01

Attachment 5

Table 2 – MW-9a Non-Tritium Isotopes

Table 2: MW-9a Non-Tritium Isotopes

Sample Date	MT 1 Monitoring Well #9 I-131 {uci/ml}	MT 1 Monitoring Well #9 I-133 {uci/ml}	MT 1 Monitoring Well #9 I-135 {uci/ml}	MT 1 Monitoring Well #9 Xe-133 {uci/ml}	MT 1 Monitoring Well #9 Xe-135 {uci/ml}
11/21/2022	1.38E-08	3.93E-08		0.000000102	3.81E-08
11/22/2022	1.51E-08	5.03E-08		0.000000126	5.89E-08
11/28/2022	9.04E-09	3.09E-08		0.00000014	0.000000112
11/29/2022	1.43E-08	4.43E-08		0.000000133	0.00000017
11/30/2022	0.000000016	4.89E-08		0.00000014	0.000000208
12/1/2022	0.000000015	5.52E-08		0.000000172	0.000000247
12/2/2022	2.01E-08	6.96E-08	0.000000032	0.000000228	0.000000402
12/3/2022	2.16E-08	0.00000007	2.72E-08	0.000000226	0.000000379
12/4/2022	2.23E-08	7.87E-08	2.94E-08	0.000000225	0.000000404
12/5/2022	2.74E-08	8.68E-08	3.86E-08	0.000000304	0.000000567
12/6/2022	2.31E-08	8.65E-08	4.08E-08	0.00000029	0.000000537
12/7/2022	2.37E-08	8.43E-08	3.34E-08	0.000000217	0.000000402
12/8/2022	2.75E-08	9.64E-08	3.75E-08	0.000000244	0.000000473
12/9/2022	0.000000028	8.83E-08	3.92E-08	0.000000279	0.000000562
12/10/2022	3.33E-08	8.97E-08	4.13E-08	0.000000301	0.00000058
12/10/2022	2.93E-08	8.48E-08	2.95E-08	0.0000003	0.000000636
12/11/2022	3.37E-08	0.000000091	4.02E-08	0.000000238	0.000000504
12/12/2022	3.08E-08	9.73E-08	4.27E-08	0.000000332	0.000000718
12/13/2022	4.23E-08	0.000000111	5.41E-08	0.000000381	0.000000804
12/14/2022	4.34E-08	0.000000127	5.61E-08	0.00000045	0.000000961
12/15/2022	0.000000045	0.000000126	5.41E-08	0.000000434	0.000000979
12/15/2022	3.82E-08	0.000000123	4.45E-08	0.000000441	0.00000103
12/16/2022	0.000000045	0.000000134	4.37E-08	0.000000502	0.00000113
12/16/2022	4.96E-08	0.000000133	6.03E-08	0.000000528	0.00000118
12/17/2022	4.87E-08	0.000000136	4.02E-08	0.000000414	0.000000965
12/17/2022	5.11E-08	0.000000147	5.36E-08	0.000000455	0.00000107
12/18/2022	5.14E-08	0.000000143	0.000000053	0.00000046	0.00000104
12/19/2022	5.76E-08	0.000000145	6.88E-08	0.000000526	0.00000108
12/20/2022	6.16E-08	0.000000139	4.89E-08	0.0000005	0.00000107
12/21/2022	5.74E-08	0.000000118	4.32E-08	0.000000546	0.000000994
12/22/2022	0.000000053	0.000000105	3.59E-08	0.000000535	0.000000961
12/23/2022	5.25E-08	8.39E-08	2.72E-08	0.000000461	0.000000677
12/24/2022	0.000000054	6.71E-08	0.000000027	0.000000413	0.000000621
12/25/2022	0.00000004	4.92E-08	0	0.000000424	0.000000432
12/26/2022	4.31E-08	4.22E-08	0	0.000000398	0.000000313
12/27/2022	3.38E-08	2.58E-08	0	0.000000312	0.000000226
12/28/2022	3.24E-08	2.42E-08	0	0.00000023	0.0000002
12/29/2022	3.05E-08	1.83E-08	0	0.000000277	0.000000178
12/30/2022	2.87E-08	1.98E-08	0	0.000000263	0.000000129
12/31/2022	2.51E-08	1.05E-08	0	0.000000215	0.000000058
1/1/2023	2.47E-08	0	0	0.000000181	3.65E-08
1/2/2023	2.11E-08	0	0	0.000000181	3.27E-08
1/3/2023	1.84E-08	0	0	0.000000154	4.26E-08
1/4/2023	1.32E-08	0	0	0.000000205	6.35E-08
1/5/2023	1.45E-08	0	0	0.000000218	6.57E-08
1/6/2023	1.27E-08	0	0	0.000000205	3.22E-08
1/7/2023	9.14E-09	0	0	0.000000177	0
1/8/2023	1.41E-08	0	0	0.00000015	0
1/9/2023	0.000000012	0	0	0.00000017	0
1/10/2023	1.81E-08	0	0	0.000000154	0
1/11/2023	1.56E-08	0	0	0.000000108	0
1/12/2023	1.63E-08	0	0	8.82E-08	0
1/13/2023	1.08E-08	0	0	5.23E-08	0

Data through 9/18/2023

Sample Date	MT 1 Monitoring Well #9 I-131 {uci/ml}	MT 1 Monitoring Well #9 I-133 {uci/ml}	MT 1 Monitoring Well #9 I-135 {uci/ml}	MT 1 Monitoring Well #9 Xe-133 {uci/ml}	MT 1 Monitoring Well #9 Xe-135 {uci/ml}
1/14/2023	1.18E-08	0	0	5.38E-08	0
1/15/2023	0.000000014	0	0	0.000000025	0
1/16/2023	1.01E-08	0	0	3.16E-08	0
1/17/2023	0	0	0	3.29E-08	0
1/18/2023	0	0	0	0	0
1/19/2023	8.48E-09	0	0	0	0
1/20/2023	0	0	0	0	0
1/23/2023	0	0	0	0	0
1/24/2023	0	0	0	0	0
1/25/2023	0	0	0	0	0
1/26/2023	0	0	0	0	0
1/27/2023	0	0	0	0	0
1/30/2023	0	0	0	0	0
1/31/2023	0	0	0	0	0
2/1/2023	0	0	0	0	0
2/2/2023	0	0	0	0	0
2/3/2023	0	0	0	0	0
2/6/2023	0	0	0	0	0
2/7/2023	0	0	0	0	0
2/8/2023	0	0	0	0	0
2/9/2023	0	0	0	0	0
2/10/2023	0	0	0	0	0
2/13/2023	0	0	0	0	0
2/14/2023	0	0	0	0	0
2/15/2023	0	0	0	0	0
2/16/2023	0	0	0	0	0
2/17/2023	0	0	0	0	0
2/20/2023	0	0	0	0	0
2/22/2023	0	0	0	0	0
2/24/2023	0	0	0	0	0
2/27/2023	0	0	0	0	0
3/1/2023	0	0	0	0	0
3/3/2023	0	0	0	0	0
3/8/2023	0	0	0	0	0
3/10/2023	0	0	0	0	0
3/14/2023	0	0	0	0	0
3/21/2023	0	0	0	0	3.29E-09
3/22/2023	0	1.55E-08	0	0	3.72E-08
3/22/2023	6.93E-09	1.37E-08	0	0	4.58E-08
3/22/2023	0	1.24E-08	0	2.17E-08	4.24E-08
3/23/2023	5.13E-09	1.67E-08	0	0	5.19E-08
3/24/2023	0	1.66E-08	0	0.000000037	4.88E-08
3/25/2023	5.84E-09	1.71E-08	0	3.95E-08	5.49E-08
3/26/2023	0	6.86E-09	0	0.000000028	0.000000021
3/27/2023	0	0	0	1.89E-08	0

Sample Date	MT 1 Monitoring Well #9 I-131 {uci/ml}	MT 1 Monitoring Well #9 I-133 {uci/ml}	MT 1 Monitoring Well #9 I-135 {uci/ml}	MT 1 Monitoring Well #9 Xe-133 {uci/ml}	MT 1 Monitoring Well #9 Xe-135 {uci/ml}
3/28/2023	0	0	0	0	0
3/29/2023	0	0	0	0	0
3/30/2023	0	0	0	0	0
3/31/2023	0	0	0	0	0
4/3/2023	0	0	0	0	0
4/6/2023	0	0	0	0	0
4/9/2023	0	0	0	0	0
4/12/2023	0	0	0	0	0
4/17/2023	0	0	0	0	0
4/19/2023	0	0	0	0	0
4/23/2023	0	0	0	0	0
4/26/2023	0	0	0	0	0
4/30/2023	0	0	0	0	0
5/3/2023	0	0	0	0	0
5/7/2023	0	0	0	0	0
5/10/2023	0	0	0	0	0
5/14/2023	0	0	0	0	0
5/18/2023	0	0	0	0	0
5/23/2023	0	0	0	0	0
5/24/2023	0	0	0	0	0
5/29/2023	0	0	0	0	0
6/1/2023	0	0	0	0	0
6/5/2023	0	0	0	0	0
6/6/2023	0	0	0	0	0
6/12/2023	0	0	0	0	0
6/15/2023	0	0	0	0	0
6/19/2023	0	0	0	0	0
6/21/2023	0	0	0	0	0
6/25/2023	0	0	0	0	0
7/4/2023	0	0	0	0	0
7/18/2023	0	0	0	0	0
8/22/2023	0	0	0	0	0
9/18/2023	0	0	0	0	0

Enclosure 01

Attachment 6

Table 3 – MNGP Environmental Well Information

Well ID	Date Installed	Unique Number	Plant Data, feet		UTM Zone 15, meters		Surface Elevation (ft)	Top of Riser Elevation (ft)	Bottom of Well Elevation (ft)	Screen Interval Elev - Elev	Depth to Top of Screen (ft)	Depth to Bottom of Screen (ft)
			Easting	Northing	Easting	Northing						
MW-1	8/10/1994	547747	4847.19	10248.69	433407.38	5020424.14	930.4	930.19	902.4	902.4 - 912.4	18	28
MW-1B	1/26/2023	870184	4857.61	10247.41	433410.44	5020425.10	930.2	929.96	873.2	973.2 - 878.2	52	57
PW-1**	2/21/2023	870167	5081.98	10055.39	433496.59	5020399.96	927.9	930.41	898.7	898.7 - 903.7	24	29
MW-2	8/10/1994	547748	4843.43	10326.78	433396.55	5020445.36	921.8	923.82	897.5	897.5 - 907.5	14	24
MW-3	8/10/1994	547749	4889.37	10319.18	433410.26	5020449.01	919.9	921.91	901.2	901.2 - 911.2	9	19
MW-4	10/8/2007	747055	5281.42	10320.84	433518.94	5020498.60	925.4	927.86	898.7	898.7 - 908.7	17	27
PW-4A	7/5/2023	872329	5283.08	10327.81	433518.53	5020500.75	925.1	926.45	895.1	895.1 - 910.1	15	30
MW-4B	1/24/2023	870185	5289.29	10321.02	433521.10	5020499.64	925.8	928.26	877.8	877.8 - 882.8	43	48
MW-5	9/6/2007	747056	4549.88	9757.05	433386.42	5020250.34	943.0	942.75	901.7	901.7 - 911.7	31	41
MW-6	9/7/2007	747057	5035.29	9563.03	433545.55	5020257.29	930.7	930.7	899.9	899.9 - 909.9	21	31
MW-7	9/5/2007	747058	6205.26	9609.17	433864.70	5020416.73	920.0	922.49	898.1	898.1 - 908.1	12	22
MW-8	9/5/2007	747059	5393.93	8251.55	433809.51	5019938.00	931.5	934.00	900.1	900.1 - 910.1	21	31
MW-9A	9/4/2009	725274	5074.19	10064.31	433493.53	5020401.38	927.9	927.58	901.2	901.2 - 911.2	17	27
MW-9B	11/17/2009	772326	5075.65	10054.35	433495.19	5020398.80	927.9	927.75	883.5	883.5 - 888.5	39	44
PW-9**	2/6/2023	870166	5074.80	10059.10	433494.36	5020400.01	927.9	928.08	892.4	892.4 - 897.4	31	36
MW-10	7/25/2009	725272	4885.05	10045.62	433443.25	5020372.49	935.0	934.69	899.8	899.8 - 909.8	25	35
PW-10A***	5/30/2023	725272	4885.31	10045.19	433443.47	5020372.40	934.9	936.36*	895.9	895.9 - 910.9	24	39
MW-10B	12/29/2022	870161	4887.86	10037.95	433445.13	5020370.70	934.9	934.41	875.9	875.9 - 880.9	54	59
MW-11	9/2/2009	725273	4886.97	9931.96	433458.12	5020341.16	934.9	934.51	899.7	899.7 - 909.7	25	35
MW-12A	10/29/2009	772328	5191.46	10105.31	433520.96	5020427.47	932.4	932.14	898.7	898.7 - 908.7	24	34
MW-12B	11/2/2009	772329	5195.51	10106.27	433521.97	5020428.24	932.4	932.13	884.4	884.4 - 889.4	43	48
MW-13	10/29/2009	772330	5059.49	10210.48	433471.13	5020440.14	934.1	933.82	897.9	897.9 - 907.9	26	36
PW-13A***	5/31/2023	772330	5059.49	10210.49	433471.13	5020440.14	931.3	932.95*	891.3	891.3 - 906.3	25	40
MW-13B	11/1/2009	772331	5062.00	10212.53	433471.57	5020441.02	931.2	933.71	873.4	873.4 - 878.4	56	61
MW-14	9/13/2010	778176	4829.02	10402.98	433383.00	5020464.72	908.7	912.42	902.1	902.1 - 905.1	4	7
MW-15A	6/25/2012	789990	5126.35	10352.88	433471.86	5020488.07	919.0	918.67	903.0	903.0 - 913.0	6	16
MW-15B	6/26/2012	789991	5131.93	10352.93	433473.40	5020488.78	919.1	918.79	869.5	869.5 - 874.5	45	50
MW-16A	12/28/2022	870162	5191.47	10214.97	433507.22	5020457.91	930.6	930.07	899.6	899.6 - 909.6	21	31
MW-16B	12/28/2022	870163	5188.29	10223.72	433505.24	5020459.96	930.7	930.34	877.7	877.7 - 882.7	28	33
PW-16A	2/20/2023	870218	5188.48	10213.12	433506.63	5020457.04	930.5	932.85	892.5	892.5 - 902.5	48	53
MW-17A	12/21/2022	870164	5146.25	9802.99	433546.33	5020337.79	933.6	935.37	900.6	900.6 - 910.6	23	33
MW-17B	12/20/2022	870165	5141.41	9803.31	433544.90	5020337.36	933.5	934.90	858.5	858.5 - 863.5	70	75
MW-19A	1/11/2023	870186	5368.46	10141.08	433565.64	5020459.58	930.5	930.31	900.5	900.5 - 910.5	20	30
MW-19B	1/11/2023	870187	5378.46	10141.03	433568.42	5020460.82	930.5	930.24	880.5	880.5 - 885.5	45	50
MW-20A	1/27/2023	870188	5561.85	10201.21	433611.82	5020500.52	921.7	923.36	897.7	897.7 - 907.7	14	24
MW-21A	1/27/2023	870189	5701.37	9721.49	433710.68	5020384.77	923.6	926.28	897.6	897.6 - 907.6	16	26
PW-22A	1/25/2023	870190	5223.69	10132.39	433526.52	5020439.03	931.6	933.47	892.6	892.6 - 902.6	29	39
MW-23A	3/17/2023	870250	5225.01	10332.11	433501.86	5020494.66	921.6	923.25	898.6	898.6 - 908.6	13	23
MW-23B	3/17/2023	870251	5225.56	10338.94	433501.16	5020496.63	921.3	923.86	876.3	876.3 - 881.3	40	45
MW-24A	6/8/2023	872351	4804.67	10025.59	433423.53	5020356.85	934.8	936.54	901.8	901.8 - 911.8	23	33
MW-26A	6/15/2023	872374	5150.93	10419.40	433470.35	5020509.62	917.5	919.27	899.5	899.5 - 909.5	8	18
MW-26B	6/15/2023	872375	5160.96	10420.68	433472.97	5020511.23	917.4	919.56	869.4	869.4 - 874.4	43	48
MW-27A	6/15/2023	872372	5253.84	10424.64	433498.27	5020523.97	917.5	919.78	899.5	899.5 - 909.5	8	18
MW-27B	6/15/2023	872373	5262.43	10424.86	433500.63	5020525.11	917.6	919.91	871.6	871.6 - 876.6	41	46
MW-28A	7/5/2023	872321	5324.84	10423.67	433518.11	5020532.60	918.4	920.51	898.4	898.4 - 908.4	10	20
MW-28B	7/5/2023	872322	5332.78	10423.44	433520.34	5020533.53	918.8	920.64	878.8	878.8 - 883.8	35	40
MW-29A	6/30/2023	872323	5391.03	10387.72	433541.00	5020530.91	920.6	922.79	898.6	898.6 - 908.6	13	23
MW-29B	6/29/2023	872324	5398.64	10384.23	433543.55	5020530.90	920.6	922.73	877.6	877.6 - 882.6	38	43
MW-30A	7/6/2023	872325	5465.99	10360.20	433565.27	5020532.66	920.0	921.33	899.0	899.0 - 909.0	11	21
MW-30B	7/6/2023	872326	5473.21	10357.95	433567.55	5020532.94	919.9	921.78	880.9	880.9 - 885.9	34	39
PW-30A	7/18/2023	872301	5471.21	10365.18	433566.09	5020534.70	919.0	920.87	888.0	888.0 - 903.0	16	31
MW-31A	7/6/2023	872328	5320.18	10236.12	433540.32	5020479.93	929.0	930.86	894.0	894.0 - 909.0	20	30
MW-31B	7/6/2023	872327	5328.12	10236.47	433542.48	5020481.02	928.8	930.63	878.8	878.8 - 883.8	45	55
MW-33A	7/19/2023	872414	5456.44	10424.99	433554.49	5020549.46	919.0	920.87	897.0	897.0 - 907.0	12	22
MW-33B	7/18/2023	872415	5464.23	10422.71	433556.94	5020549.80	919.1	920.39	879.1	879.1 - 884.1	35	40
MW-37A	7/21/2023	872416	5562.59	10450.69	433580.75	5020569.90	913.0	914.96	896.0	896.0 - 906.0	7	17
MW-37B	7/21/2023	872417	5571.69	10450.91	433583.26	5020571.10	913.9	916.20	875.9	875.9 - 880.9	33	38
MW-48A	7/26/2023	872437	5711.40	10444.22	433622.90	5020586.75	919.6	921.62	897.6	897.6 - 907.6	12	22
MW-48B	7/26/2023	872438	5703.61	10444.65	433620.68	5020585.90	920.8	922.59	868.8	868.8 - 873.8	47	52
MW-50A	7/24/2023	872439	5700.59	10313.03	433636.33	5020548.96	919.4	921.70	897.4	897.4 - 907.4	12	22
MW-58A	7/25/2023	872440	5836.28	10432.11	433659.10	5020599.04	920.1	922.87	899.1	899.1 - 909.1	11	21
MW-101A	7/27/2023	872427	6222.89	7498.06	434134.17	5019832.62	928.2	929.85	901.2	901.2 - 911.2	17	27
MW-102A	7/28/2023	872428	6713.15	7546.16	434264.30	5019907.42	926.4	928.59	899.4	899.4 - 909.4	18	28
MW-103A	7/28/2023	872429	6606.53	7219.23	434275.66	5019803.26	935.2	937.55	903.3	903.3 - 913.3	22	32
GC-1	8/30/2023	872477	5897.97	9657.87	433773.26	5020391.74	923.4	925.83	881.4	881.4 - 901.4	22	42
GC-2	8/28/2023	872478	5463.82	9505.47	433671.78	5020295.01	930.7	932.71	881.7	881.7 - 901.7	29	49
GC-3	8/28/2023	872479	5198.76	9425.67	433608.16	5020239.63	931.2	933.50	881.2	881.2 - 901.2	30	50
GC-4	8/24/2023	872480	4878.27	9391.58	433523.43	5020189.99	932.4	934.51	877.4	877.4 - 897.4	35	55
GC-5	8/23/2023	872481	4523.98	9841.89	433368.60	5020270.66	942.1	944.54	892.1	892.1 - 912.1	30	50

Notes:

* Measuring point is top of well cover with pump installed.

** Location data for PW-1 and PW-9 is approximate, these wells are located inside the former Site Administration Building.

*** Monitoring wells MW-10 and MW-13 were over-drilled and replaced with recovery wells PW-10A and PW-13A, respectively.

MW = stands for Monitoring Well
PW = stands for Pumping Well
GC = stands for Gradient Control

Enclosure 01

Attachment 7

Table 4 – MNGP 2022 Static Water Level Elevations

Date	MW-1	MW-2	MW-3	MW-4	MW-5	MW-6	MW-7	MW-8	MW-9A	MW-9B	MW-10	MW-11	MW-12A	MW-12B	MW-13A	MW-13B	MW-14	MW-15A	MW-15B	River
1/18/2022	906.74	906.65	906.74	906.13	907.25	906.76	905.68	907.21	906.63	906.59	906.63	906.80	906.40	906.42	906.44	906.46	905.02	906.04	906.16	905.90
2/21/2022	906.76	906.77	906.76	906.14	907.25	906.70	905.65	907.14	906.56	906.47	906.59	906.41	906.34	906.36	906.36	906.46	905.01	906.05	906.16	906.23
3/21/2022	906.99	907.14	906.98	906.47	907.33	906.85	905.89	910.45	906.67	906.72	906.80	906.85	906.49	906.55	906.53	906.67	905.81	906.37	906.56	906.74
4/20/2022	909.51	909.82	909.78	909.61	908.06	908.93	908.64	909.04	909.14	909.20	909.12	908.73	909.34	909.41	909.47	909.46	908.76	909.47	909.44	909.68
5/23/2022	911.68	911.92	911.99	911.60	909.61	911.63	910.83	911.74	911.52	911.52	911.39	910.98	911.59	911.60	911.67	911.60	910.76	911.47	911.46	911.49
6/21/2022	909.89	909.52	909.71	908.60	910.67	910.80	908.54	911.45	910.03	909.91	910.05	910.45	909.54	909.43	909.45	909.36	907.26	908.47	908.69	908.27
7/19/2022	909.12	908.66	908.93	907.70	910.75	909.86	907.68	910.69	909.21	909.09	909.35	909.85	908.65	908.53	908.62	908.52	906.25	907.56	907.84	907.15
8/22/2022	907.97	907.66	907.83	906.81	909.85	908.62	906.65	909.58	907.93	907.93	908.19	906.69	906.76	907.43	907.42	907.45	905.35	906.57	906.81	906.27
9/20/2022	907.31	906.85	907.07	905.89	909.44	908.14	906.01	908.96	907.38	907.30	907.63	908.19	906.84	906.72	906.77	906.73	904.58	905.71	906.03	905.16
10/19/2022	906.88	906.51	906.67	905.63	908.91	907.47	905.65	908.32	906.90	906.84	907.08	907.59	906.39	906.33	906.36	906.40	904.27	905.47	905.77	905.07
11/22/2022	907.20	906.97	907.10	906.19	908.45	907.63	906.04	908.26	907.41	907.20	907.37	907.66	906.81	906.77	906.81	906.82	904.98	906.00	906.24	905.80
12/19/2022	906.78	906.44	906.62	905.61	908.25	907.24	905.60	907.93	907.06	906.82	907.01	907.32	906.36	906.30	906.32	906.31	904.36	905.46	905.69	905.05

Notes:

All elevations given in feet, NGVD

Enclosure 01

Attachment 8

Table 5 – MNGP 2023 Static Water Level Elevation (Feet)

Table 5 – MNGP 2023 Static Water Level Elevation (Feet)

	MW-1A	MW-1B	MW-2	MW-3	MW-4A	MW-4B	PW-4A	MW-5	MW-6	MW-7	MW-8	MW-9A	MW-9B	MW-10A	PW-10A
2/6/2023	906.84	906.56	906.77	906.80	906.01	906.11		907.98	906.98	905.63	907.60	906.66	906.65	906.87	
2/13/2023	906.76	906.46	906.67	906.72	905.93	906.03		907.90	906.93	905.55	907.56	905.97	906.23	906.78	
2/20/2023	906.91	-	906.86	906.90	906.05	906.17		907.87	907.05	905.68	907.69	906.54	906.40	906.95	
2/27/2023	906.81	906.52	906.73	906.79	906.02	906.13		907.82	906.99	905.68	907.61	906.00	906.30	906.82	
3/6/2023	906.75	906.37	906.73	906.74	905.90	905.99		907.77	906.92	905.60	907.56	905.49	905.95	906.77	
3/14/2023	906.74	906.44	906.74	906.71	905.89	906.01		907.74	906.93	905.65	907.53	905.67	906.06	906.77	
3/20/2023	906.70	906.30	906.61	906.67	905.88	905.99		907.69	906.91	905.62	907.52	905.92	906.20	906.78	
3/26/2023	906.76	906.45	906.68	906.72	906.03	906.11		907.66	906.95	905.68	907.56	905.76	906.12	906.67	
4/2/2023	-	-	-	-	906.21	-		-	-	-	-	906.51	906.65	906.84	
4/3/2023	906.90	906.58	906.83	906.92	906.18	906.26		907.62	907.15	905.94	907.78	906.51	906.61	906.84	
4/10/2023	907.22	906.98	907.33	907.31	906.72	906.74		907.71	907.45	906.35	908.13	906.09	906.57	907.10	
4/17/2023	910.82	911.07	912.24	911.93	912.89	912.24		908.01	908.94	910.95	909.50	908.56	909.41	909.61	
4/24/2023	912.14	912.09	912.91	912.85	913.06	912.88		908.64	911.19	911.62	911.35	910.98	911.28	911.42	
4/26/2023	912.17	912.05	912.76	913.77	912.76	912.64		908.97	911.58	911.62	911.69	910.92	911.37	-	
5/1/2023	912.08	911.85	912.38	912.42	912.11	912.09		909.56	912.00	911.28	912.17	911.04	911.43	-	
5/8/2023	911.57	911.26	911.61	911.68	910.98	911.09		910.18	911.93	910.45	911.39	910.72	911.04	-	
5/15/2023	911.31	910.99	911.25	911.32	910.60	910.70		910.80	911.74	910.24	912.37	910.55	910.78	-	
5/22/2023	910.81	910.41	910.53	910.70	909.65	909.85		910.85	911.57	909.59	912.33	910.23	910.44	-	
5/30/2023	909.98	909.46	909.45	909.80	908.25	908.55		910.38	911.15	908.60	912.09	909.40	909.65	910.14	
6/5/2023	909.20	908.64	908.53	908.93	907.23	907.58		911.42	910.68	907.76	911.73	908.79	909.00	-	909.61
6/12/2023	908.60	908.03	907.94	908.30	906.62	906.88		911.35	910.11	907.22	911.33	908.18	908.35	-	898.40
6/19/2023	908.03	907.48	907.34	907.65	905.92	906.21		911.15	909.60	906.66	910.92	907.76	907.84	-	899.07
6/26/2023	907.70	907.19	907.09	907.30	905.31	905.95		910.96	909.16	906.43	910.52	907.72	907.65	-	898.58
7/5/2023	907.45	906.96	906.85	907.10	905.18	905.78		910.68	908.75	906.23	910.19	907.53	907.41	-	902.09
7/10/2023	907.23	906.75	906.61	906.89	905.15	905.53	904.93	910.59	908.55	906.00	909.87	907.09	906.97	-	902.55
7/19/2023	906.94	906.48	906.36	906.57	904.90	905.21	904.90	910.35	908.16	905.69	909.48	906.98	906.86	-	902.52
7/24/2023	906.75	906.28	906.18	906.41	904.76	905.16	904.76	910.16	908.00	906.07	909.29	906.67	906.64	-	902.76
7/31/2023	906.79	906.12	906.04	906.30	904.62	904.94	904.63	909.97	907.86	905.46	909.09	906.59	906.54	-	902.97
8/7/2023	906.50	906.05	905.91	906.18	904.58	904.91	899.59	909.77	907.65	905.30	908.85	906.41	906.30	-	902.09
8/14/2023	906.52	906.09	906.10	906.32	904.84	905.14	904.84	909.54	907.64	905.42	909.00	905.98	906.12	-	902.92
8/21/2023	906.44	906.00	905.97	906.18	904.69	905.00	904.97	909.48	907.77	905.32	908.83	906.06	906.16	-	899.89
8/28/2023	906.26	905.79	905.74	905.96	904.48	904.78	904.51	909.32	907.48	905.10	908.59	906.05	906.10	-	899.10
9/5/2023	906.04	905.59	905.51	905.74	904.28	904.56	904.30	909.12	907.23	904.92	908.35	905.81	905.87	-	899.15
9/11/2023	906.06	905.66	905.61	905.77	904.52	904.77	903.51	909.03	907.03	904.95	908.17	905.45	904.85	-	900.03
9/18/2023	905.84	905.44	905.32	905.56	904.33	904.51	904.35	908.83	906.84	904.73	907.98	905.71	905.71	-	899.48
9/25/2023	905.95	905.51	905.46	905.65	904.51	904.69	903.09	908.65	906.74	904.80	907.20	905.75	905.72	-	899.43
10/2/2023	906.33	905.99	906.08	906.18	905.18	905.32	905.20	908.52	906.83	905.16	907.77	906.09	906.13	-	902.83
10/9/2023	906.43	906.08	906.19	906.30	905.33	905.48	905.35	908.45	906.88	905.30	907.75	-	-	-	903.58
10/16/2023	906.58	906.23	906.39	906.52	905.59	905.69	905.62	908.48	907.09	905.50	907.92	-	-	-	903.87
10/23/2023	906.60	906.17	906.36	906.48	905.50	905.66	905.53	908.38	907.14	905.45	907.91	-	-	-	906.74
10/30/2023	906.64	906.25	906.34	906.51	905.63	905.73	905.66	908.32	907.17	905.45	907.94	-	-	-	906.81
11/10/2023	906.53	906.16	906.26	906.37	905.53	905.65	-	908.27	907.07	905.44	907.86	906.47	906.42	-	906.63

Table 5 – MNGP 2023 Static Water Level Elevation (Feet)

	MW-10B	MW-11	MW-12A	MW-12B	MW-13A	PW-13A	MW-13B	MW-13Br	MW-14	MW-15A	MW-15B	PW-16A	MW-16A	MW-16B	MW-17A
2/6/2023	906.77	907.09		906.33	906.42		906.47		-	905.83	905.98		906.24	906.28	906.90
2/13/2023	906.67	907.02		906.27	906.31		906.26		-	905.80	905.96		906.16	906.20	906.86
2/20/2023	906.81	907.11		906.42	906.46		906.51		-	905.95	906.09		906.30	-	907.00
2/27/2023	906.72	907.07	906.33	906.33	906.37		906.43		-	905.86	906.05		905.90	906.28	906.91
3/6/2023	906.65	907.00	906.18	906.13	906.23		906.32		-	905.77	905.87		905.77	906.14	906.84
3/14/2023	906.61	906.96	906.15	906.10	906.17		906.29		-	905.75	906.00		905.77	906.14	906.82
3/20/2023	906.61	906.96	906.22	906.15	906.17		906.30		905.81	905.75	905.85		905.79	906.12	906.86
3/26/2023	906.61	906.95	906.21	906.17	906.21		906.35		-	905.89	905.98		905.82	906.20	906.87
4/2/2023	906.76	-	906.29	906.30	906.34		906.46		-	906.07			905.95	906.34	-
4/3/2023	906.76	907.05	906.22	906.43	906.42		906.50		-	906.03	906.18		906.01	906.36	907.03
4/10/2023	907.09	907.26	906.66	906.74	905.01		906.90		-	906.61	906.74		906.32	906.76	907.31
4/17/2023	910.43	908.61	910.12	909.62	907.62		911.25		-	912.97	912.30		910.64	911.41	908.87
4/24/2023	911.83	910.44	912.11	912.26	909.89		912.35		-	912.99	912.73		912.45	912.56	911.15
4/26/2023	911.87	910.76	912.15	912.26	911.06		912.28		-	912.68	912.50	912.30	912.37	912.44	911.53
5/1/2023	911.83	911.18	911.97	911.99	911.28		911.98		-	912.01	911.96	911.98	912.05	912.05	911.93
5/8/2023	911.38	911.25	911.35	911.29	909.10		911.29		-	910.86	910.98	911.23	911.27	911.22	911.82
5/15/2023	911.14	911.18	910.93	910.91	909.06		910.93		-	910.49	910.62	910.35	910.66	910.83	911.59
5/22/2023	910.71	911.12	910.43	910.34	907.81		910.31		-	909.50	909.75	910.00	910.88	910.13	911.42
5/30/2023	909.90	910.77	909.49	909.35	909.39		909.24		-	908.07	908.42	908.39	908.91	908.99	910.94
6/5/2023	909.19	910.37	908.71	908.52	-		-	908.42	-	907.02	907.48	907.93	908.18	908.09	910.47
6/12/2023	908.56	909.91	907.68	907.75	-		-	907.74	-	906.40	906.83	905.87	906.92	907.34	909.86
6/19/2023	908.01	909.46	907.23	907.12	-	900.50	-	907.14	905.43	905.71	906.18	905.04	906.24	906.70	909.37
6/26/2023	907.68	909.06	906.80	906.75	-	896.98	-	906.83	905.40	905.51	905.98	904.74	905.36	906.38	908.89
7/5/2023	907.44	908.73	906.57	906.51	-	897.57	-	906.62	905.27	905.36	906.15	904.85	905.74	906.18	908.49
7/10/2023	907.25	908.57	906.39	906.33	-	900.46	-	906.41	-	905.06	905.54	904.37	905.44	905.95	908.32
7/19/2023	906.92	908.26	906.02	905.86	-	898.99	-	906.10	-	904.77	905.18	903.96	905.04	905.61	907.96
7/24/2023	906.74	908.07	905.85	905.80	-	899.50	-	905.93	904.81	904.61	905.09	903.82	904.89	905.46	907.76
7/31/2023	906.58	907.90	905.73	905.67	-	900.91	-	905.80	904.80	904.47	904.96	903.68	904.77	905.31	907.61
8/7/2023	906.53	907.75	905.78	905.62	-	898.07	-	905.76	904.86	904.42	904.82	904.74	905.20	905.34	907.44
8/14/2023	906.51	907.59	905.74	905.76	-	898.87	-	905.87	905.53	904.74	905.17	904.77	905.23	905.44	907.37
8/21/2023	906.45	907.68	905.82	905.72	-	898.51	-	905.77	-	904.53	904.98	904.83	905.24	905.39	907.52
8/28/2023	906.25	907.49	905.61	905.50	-	898.45	-	905.57	905.22	904.31	904.77	904.60	905.04	905.18	907.26
9/5/2023	906.04	907.27	905.40	905.31	-	897.57	-	905.36	904.85	904.13	904.58	904.39	904.83	904.97	907.01
9/11/2023	906.04	907.11	905.45	905.29	-	899.16	-	905.42	904.71	904.36	-	904.52	904.88	905.03	906.85
9/18/2023	905.84	906.95	905.20	905.15	-	901.73	-	905.21	904.57	904.11	904.47	904.32	904.73	904.84	906.63
9/25/2023	905.88	906.83	905.24	905.20	-	902.09	-	905.34	904.72	904.32	904.64	904.34	904.77	904.96	906.55
10/2/2023	906.27	906.96	905.60	905.62	-	899.65	-	905.85	905.09	905.04	905.34	904.82	905.22	905.49	906.70
10/9/2023	906.39	907.03	905.82	905.81	-	-	-	905.97	905.24	905.19	905.46	-	905.45	905.66	906.77
10/16/2023	906.51	907.13	906.02	906.01	-	-	-	906.13	905.52	905.41	891.21	-	905.66	905.87	906.94
10/23/2023	906.56	907.20	906.08	906.05	-	-	-	906.14	905.45	905.32	905.59	-	905.70	905.87	907.04
10/30/2023	906.54	907.23	-	-	-	-	-	906.17	905.38	905.42	905.63	-	906.04	905.97	907.06
11/10/2023	906.47	907.09	906.03	906.01	-	904.43	-	906.12	905.37	905.34	905.58	905.52	905.83	905.85	906.93

Table 5 – MNGP 2023 Static Water Level Elevation (Feet)

	MW-17B	MW-19A	MW-19B	MW-20A	MW-21A	PW-22A	MW-23A	MW-23B	MW-24A	MW-26A	MW-26B	MW-27A	MW-27B	MW-28A	MW-28B
2/6/2023	906.60	906.27	906.23	906.08	906.34										
2/13/2023	906.49	906.16	906.10	906.00	906.26										
2/20/2023		906.30		906.20	906.40										
2/27/2023	906.52	906.26	906.27	906.20	906.40										
3/6/2023	906.46	906.11	906.08	906.08	906.31										
3/14/2023	906.43	906.10	906.07	906.10	906.37										
3/20/2023	906.44	906.11	906.09	906.13	906.36										
3/26/2023	906.46	906.18	906.16	906.17	906.39		906.06	906.17							
4/2/2023		906.31					906.22	906.28							
4/3/2023	906.63	906.36	906.33	906.38	906.64		906.20	906.30							
4/10/2023	906.91	906.67	906.59	906.74	907.02		906.77	906.82							
4/17/2023	910.13	910.64	910.95	911.30	910.92	910.22	912.97	912.32							
4/24/2023	911.97	912.55	912.36	912.72	912.12	912.19	913.12	912.89							
4/26/2023	912.05	912.47	912.46	912.55	912.04	912.19	912.82	910.47							
5/1/2023	911.88	912.10	912.07	912.06	911.84	911.94	912.15	912.13							
5/8/2023	911.36	911.30	911.21	911.13	911.18	911.25	911.03	911.14							
5/15/2023	911.04	910.83	910.78	910.74	910.98	910.79	910.65	910.75							
5/22/2023	910.63	910.26	910.19	910.04	910.46	910.28	909.69	909.91							
5/30/2023	909.77	909.20	909.05	908.94	909.69	909.07	908.29	908.60							
6/5/2023	909.01	908.30	908.15	907.94	908.85	908.46	907.26	907.62							
6/12/2023	908.34	907.51	907.39	907.25	908.32	907.60	906.66	906.94	909.56						
6/19/2023	907.76	906.84	906.70	906.55	907.77	906.96	905.95	906.28	909.13	905.57	906.06	905.64	905.99		
6/26/2023	907.37	906.42	906.34	906.24	907.49	906.54	905.40	906.02	908.71	905.50	905.62	905.53	905.86		
7/5/2023	907.12	906.22	906.15	906.06	907.24		905.10	906.36	908.38	905.41	905.78	905.41	905.71		
7/10/2023	906.93	906.04	905.95	905.84	907.03	906.12	904.83	905.59	908.21	905.13	905.47	905.05	905.40	905.07	905.31
7/19/2023	906.57	905.66	905.60	905.49	906.72	905.77	904.16	905.29	907.90	904.92	905.23	904.83	905.13	904.83	905.09
7/24/2023	906.40	905.49	905.40	905.34	906.57	905.58	903.96	905.13	907.70	904.86	905.07	904.68	904.98	904.69	904.94
7/31/2023	906.27	905.38	905.30	905.22	906.46	905.46	903.78	905.00	907.54	904.83	904.92	904.55	904.82	904.53	904.79
8/7/2023	906.24	905.40	905.31	905.18	906.34	905.54	903.74	905.02	907.43	904.71	904.85	904.44	904.78	904.44	904.72
8/14/2023	906.19	905.42	905.37	905.32	906.36	905.49	904.02	905.21	907.27	905.09	905.23	904.91	905.14	904.91	905.14
8/21/2023	906.20	905.45	905.35	905.27	906.34	905.58	904.17	905.06	907.33	905.04	904.92	904.57	904.84	904.54	904.81
8/28/2023	906.02	905.26	905.16	905.06	906.11	905.38	903.93	904.83	907.18	904.87	904.68	904.35	904.62	904.31	904.59
9/5/2023	905.80	905.04	904.96	904.85	905.90	-	903.73	904.64	906.95	904.93	904.51	904.16	904.43	904.15	904.40
9/11/2023	905.78	905.05	904.99	904.91	905.86	905.18	904.01	904.81	906.81	905.00	904.71	904.40	904.63	904.41	904.61
9/18/2023	905.58	904.88	904.81	904.74	905.66	-	903.92	904.55	906.66	904.80	904.40	903.95	904.35	903.95	904.31
9/25/2023	905.63	904.95	904.89	904.82	905.71	905.06	904.10	904.76	906.57	904.98	904.63	904.30	904.58	904.30	904.54
10/2/2023	906.01	905.37	905.36	905.31	905.97	905.42	904.81	905.39	906.75	905.47	905.35	905.17	905.28	905.18	905.26
10/9/2023	906.17	905.63	905.60	905.54	906.10	905.66	-	905.51	906.85	905.51	905.44	905.22	905.39	905.21	905.37
10/16/2023	906.31	905.85	905.82	905.78	906.30	-	-	905.71	906.95	905.71	905.63	905.38	905.59	905.39	905.56
10/23/2023	906.38	905.91	905.84	905.79	906.27	-	-	905.68	907.03	905.57	905.55	905.28	905.52	905.28	905.50
10/30/2023	906.44	905.99	905.91	905.83	906.27	-	-	905.76	907.06	905.55	905.56	905.23	905.55	905.23	905.51
11/10/2023	906.26	905.84	905.81	905.79	906.26	-	905.54	905.69	906.91	905.58	905.61	905.30	905.61	905.33	905.54

Table 5 – MNGP 2023 Static Water Level Elevation (Feet)

	MW-29A	MW-29B	PW-30A	MW-30A	MW-30B	MW-31A	MW-31B	MW-33A	MW-33B	MW-37A	MW-37B	MW-48A	MW-48B	MW-50A
2/6/2023														
2/13/2023														
2/20/2023														
2/27/2023														
3/6/2023														
3/14/2023														
3/20/2023														
3/26/2023														
4/2/2023														
4/3/2023														
4/10/2023														
4/17/2023														
4/24/2023														
4/26/2023														
5/1/2023														
5/8/2023														
5/15/2023														
5/22/2023														
5/30/2023														
6/5/2023														
6/12/2023														
6/19/2023														
6/26/2023														
7/5/2023														
7/10/2023	905.17	905.36		905.25	905.40	905.80	905.65							
7/19/2023	904.82	905.07	904.30	904.73	905.09	905.42	905.33	904.80	905.04					
7/24/2023	904.69	904.93	904.18	904.60	904.94	905.26	905.16	904.66	904.90					
7/31/2023	904.54	904.79	904.04	904.45	904.80	905.17	905.03	904.52	904.75	904.58	904.69	904.59	905.62	904.92
8/7/2023	904.51	904.74	904.26	904.53	904.77	905.20	905.05	904.46	904.68	904.49	904.60	904.55	905.50	904.81
8/14/2023	904.89	905.08	904.61	904.89	905.08	905.27	905.20	904.90	905.06	904.90	905.03	904.95	905.99	905.15
8/21/2023	904.60	904.82	904.38	904.63	904.84	905.28	905.12	904.55	904.75	904.36	904.65	904.51	905.56	904.88
8/28/2023	904.39	904.61	904.24	904.41	904.62	905.07	904.92	904.33	904.52	904.15	900.33	904.31	905.34	904.67
9/5/2023	904.18	904.41	904.04	904.22	904.43	904.87	904.72	904.14	904.34	903.97	904.27	904.12	905.17	904.49
9/11/2023	904.46	904.63	904.28	904.44	904.64	904.90	904.81	904.42	904.59	904.25	904.53	904.45	905.48	904.72
9/18/2023	904.19	904.32	904.10	904.18	904.33	904.76	904.63	904.09	904.27	903.98	904.21	904.04	905.12	904.44
9/25/2023	904.43	904.55	904.34	904.44	904.56	904.82	904.75	904.39	904.51	904.26	904.44	904.36	905.38	904.66
10/2/2023	905.18	905.25	905.16	905.21	905.26	905.33	905.30	904.90	905.24	905.18	905.22	905.16	906.18	905.33
10/9/2023	905.29	905.37	905.71	904.79	905.37	905.55	905.49	-	905.34	905.27	905.31	905.22	906.25	905.43
10/16/2023	905.50	905.56	905.47	905.54	905.57	905.78	905.72	-	905.53	905.43	905.49	905.38	906.42	905.63
10/23/2023	905.43	905.51	905.38	905.46	905.53	905.79	905.71	-	905.47	905.34	905.40	905.27	906.30	905.54
10/30/2023	905.46	905.54	-	905.47	905.55	905.91	905.82	-	905.46	905.33	905.39	905.23	906.28	905.54
11/10/2023	905.52	905.55	906.44	905.47	905.62	905.76	905.68	905.39	905.53	905.36	905.42	905.32	906.39	905.55

Table 5 – MNGP 2023 Static Water Level Elevation (Feet)

	MW-58A	MW-66A	MW-67A	MW-67B	MW-68A	MW-101	MW-102	MW-103	River
2/6/2023									905.82
2/13/2023									905.98
2/20/2023									905.72
2/27/2023									905.68
3/6/2023									905.85
3/14/2023									905.88
3/20/2023									905.94
3/26/2023									905.99
4/2/2023									905.94
4/3/2023									906.83
4/10/2023									913.51
4/17/2023									913.00
4/24/2023									912.88
4/26/2023									912.29
5/1/2023									911.15
5/8/2023									910.50
5/15/2023									909.28
5/22/2023									907.55
5/30/2023									906.40
6/5/2023									905.81
6/12/2023									905.12
6/19/2023									905.19
6/26/2023									905.05
7/5/2023									904.61
7/10/2023									904.40
7/19/2023									904.29
7/24/2023									904.04
7/31/2023	905.56					908.97	908.94	910.49	903.88
8/7/2023	905.42					908.66	908.67	910.00	904.74
8/14/2023	905.97					908.57	908.45	909.74	904.06
8/21/2023	905.49					908.60	908.45	909.66	903.78
8/28/2023	905.26					908.53	908.36	909.65	903.57
9/5/2023	905.10					-	-	-	904.03
9/11/2023	905.44					-	-	-	903.44
9/18/2023	905.04					-	-	-	903.95
9/25/2023	905.33					-	-	-	905.07
10/2/2023	906.16					-	-	-	904.97
10/9/2023	906.22					-	-	-	905.13
10/16/2023	906.37					-	-	-	904.93
10/23/2023	906.25					-	-	-	904.95
10/30/2023	906.20	905.89	905.97	905.98	907.19	-	-	-	904.95
11/10/2023	906.29	905.82	905.82	905.80	907.07	-	-	-	905.06

Enclosure 01

Attachment 9

Table 6 – Monthly Summary of Pumping Withdrawal Volume (gallons)

Table 6: Monthly Summary of Pumping Withdrawal Volume (gallons)

2023	MW-12A	MW-23A	MW-33A	MW-37A	MW-4A	MW-9A	MW-9B	PW-1	PW-10A	PW-13A	PW-16A	PW-22A	PW-30A	PW-4A	PW-9	Total (Gallons)
January	26,191	0	0	0	0	3,465	3,465	0	0	0	0	0	0	0	0	33,121
February	35,690	0	0	0	0	7,776	5,007	0	0	0	74,503	0	0	0	41,500	164,476
March	3,674	0	0	0	0	4,081	395	21,126	0	0	334,705	0	0	0	89,477	453,458
April	49,879	0	0	0	0	14,922	597	21,004	4,911	42,924	176,624	0	0	0	67,746	378,607
May	119,266	0	0	0	0	18,466	0	36,932	20,597	68,334	120,074	0	0	0	75,829	459,498
June	9,454	38,113	0	0	38,865	5,990	0	20,751	76,227	77,005	532,155	0	0	0	50,274	848,834
July	0	285,016	0	0	39,453	0	0	10,654	69,682	91,600	698,870	0	208,606	107,919	31,962	1,543,762
August	0	291,610	0	69,947	0	0	0	16,065	67,459	110,640	260,120	0	384,017	1	48,196	1,248,055
September	0	178,301	22,212	106,716	0	0	0	46	56,758	78,190	292,330	0	176,913	0	47,351	958,817
October	0	112,621	98,831	0	0	0	0	1,125	20,542	49,829	190,107	0	0	108	72,708	545,871
Total	244,154	905,661	121,043	176,663	78,318	54,700	9,464	127,703	316,176	518,522	2,679,488	0	769,536	108,028	525,043	6,634,499