



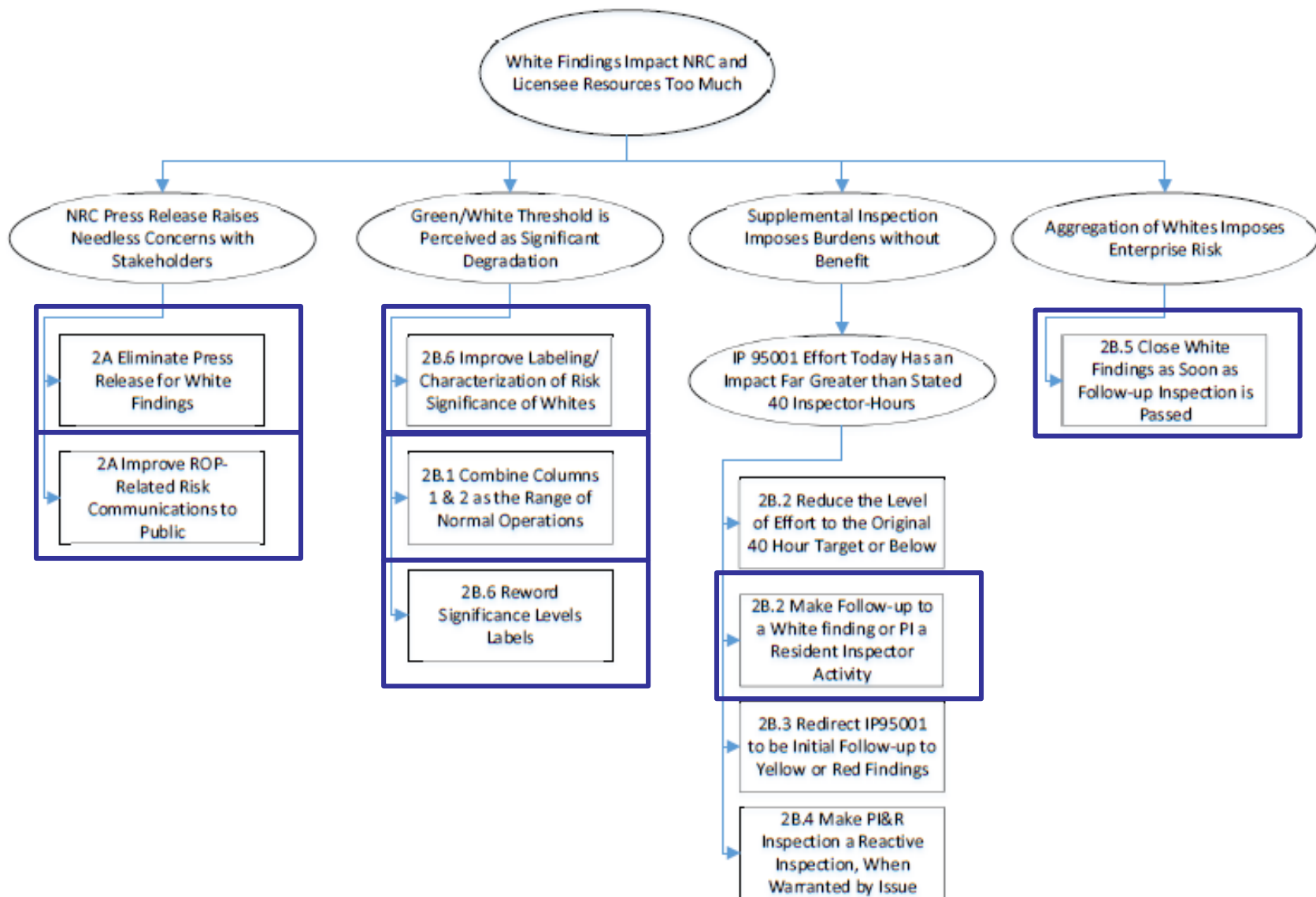
Reactor Oversight Process Enhancement

November 2018

Assessment – Alex Garmoe

#	Description
2A	Revise Public Communications on White Findings
2B	Revise the Structure of the Action Matrix
2B.1	Combine Columns 1 and 2
2B.2	Follow-Up via Resident Inspectors: Establish the follow-up and closure for White findings through the resident inspector inspecting the causal analysis. (Shared)
2B.5	Promptly Close White Findings
2B.6	Redefine Finding Labels
4C	Open Up Communications about Inspection Results

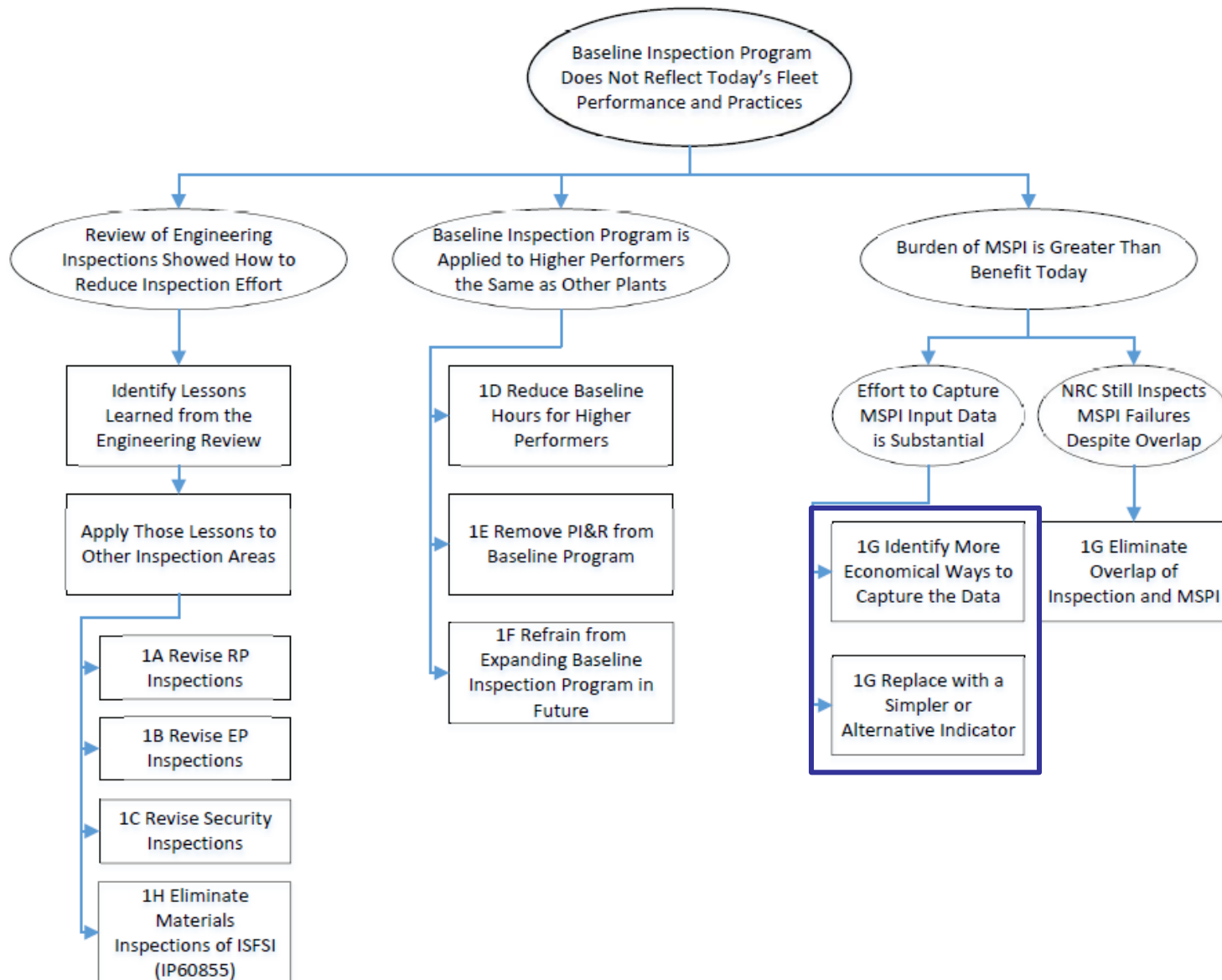
ROP Enhancement



MSPI – Alex Garmoe

#	Description
1G	Revise Use of Mitigating Systems Performance Index

ROP Enhancement



ROP Inspection – Ami Agrawal

#	Description
1D	Reduce Baseline Hours for Higher Performers
1E	Remove PI&R Inspection from Baseline Program
1F	Refrain from Expanding Baseline Inspection Effort in Future
2B.2	Follow-Up via Resident Inspectors: Establish the follow-up and closure for White findings through the resident inspector inspecting the causal analysis. (Shared)
2B.3	Redirect IP 95001: Change the IP 95001 from a stand-alone “supplemental” procedure for Whites to become a follow-up to Yellow or Red findings as an initial inspection
2B.4	Revise IP 71152 to be reactive

Radiation Protection – David Garmon

#	Description
1A	Revise RP Inspections
3A.1	Expand 3A Approach to All Deterministic SDPs

Security – Alonzo Richardson

#	Description
1C	Revise Security Inspections
3A.1	Expand 3A Approach to All Deterministic SDPs

SDP Infrastructure – Antonios Zoulis

#	Description
3B	Combine BDB into One SDP
3D	Standardize PRA Inputs to SDP
3E	Develop Procedure to Align on PRA Inputs Early
3F	Develop NRC Interface for Licensee PRAs
3G	Eliminate Use of SPAR in SDP

ISFSI – Carla Roque-Cruz

#	Description
1H	Eliminate Materials Inspections of ISFSIs

Licensing/Backfit – Tim Reed

#	Description
4A	Establish Policy to Respect Licensing Basis
4B	Establish Means of Resolving Very Low-Risk Licensing Basis Concerns

Emergency Preparedness – Don Johnson

#	Description
1B	Revise EP Inspections
3A	Revise EP SDP