

Part 21 (PAR)

Event # 50504

Rep Org: ELECTROSWITCH	Notification Date / Time: 10/03/2014 10:15 (EDT)
Supplier: ELECTROSWITCH	Event Date / Time: 09/30/2014 (EDT)
	Last Modification: 10/03/2014
Region: 1	Docket #:
City: WEYMOUTH	Agreement State: Yes
County:	License #:
State: MA	
NRC Notified by: LARRY FRIEDMAN	Notifications: PAUL KROHN R1DO
HQ Ops Officer: JOHN SHOEMAKER	STEVEN VIAS R2DO
Emergency Class: NON EMERGENCY	CHRISTINE LIPA R3DO
10 CFR Section:	JACK WHITTEN R4DO
21.21(d)(3)(i) DEFECTS AND NONCOMPLIANCE	PART 21 GROUP EMAIL

PART 21 REPORT - SERIES 20 MODULE MAY ALLOW THE SIDE COVER TO TOUCH THE WIRE INSULATION

The following information was excerpted from report received via email:

"The orientation (90 degrees) of the placement (soldering) of the internal wire on the resistor terminal used in the above referenced Series 20 modules may allow the side cover screw to touch the wire insulation. The engineering drawing nor manufacturing assembly instructions did not clearly describe the correct orientation.

"On the basis of our evaluation, it was determined on September 30, 2014, that Electros witch does not have the capability to perform the evaluation to determine if a defect, which could create a substantial safety hazard, exists.

"Purchasers are being advised to perform testing to verify operation or return the product to Electros witch.

"The following personnel may be contacted regarding this notification:

Larry Friedman
Quality Assurance Manager
781-607-3309

Ed Reszenski
Engineering Manager
781-607-3341"

LEI9
NRC



ELECTROSWITCH • SWITCHES & RELAYS

UNIT OF ELECTRO SWITCH CORP.

180 King Avenue • Weymouth, MA 02188 • Phone 781-335-5200 • Fax 781-335-4253

October 2, 2014

U. S. Nuclear Regulatory Commission
NRC Operations Center
Facsimile # 301-816-5151

Subject: 10 CFR Part21 Reporting of Defects and Noncompliance
Electroswitch Report # 10CFR21-????????? 50504

To whom it may concern:

The enclosed report addresses a reportable notification on an Electroswitch Series 20 Module.

A copy of the report will be mailed to our affected nuclear customers.

Please sign below, acknowledging receipt of this report, and return a copy to the attention of Larry Friedman, Quality Assurance Manager, at the above address or fax to 781-335-4253 within 10 working days after receipt.

Sincerely,
ELECTROSWITCH

Larry Friedman
Quality Assurance Manager

Please let us know if ANY of your mailing information changes – name of recipient, name of company/facility, address, etc. Mark the changes on this acknowledgement form and send to us by mail to the address above or by FAX to 781-335-4253.

RECEIVED: _____

DATE: _____



The following information is supplied in accordance with the requirements of 10 CFR Part21.

A. Name and address of individual informing the Nuclear Regulatory Commission:

Larry Friedman – Quality Assurance Manager
Electroswitch
180 King Avenue
Weymouth, MA 02188

B. Identification of the basic component supplied which has a deviation (departure from the technical requirements included in the procure document):

The Series 20 Module (Electroswitch part #29172M-284D, 30993M-XXX family, 30994M-XXX family, 32761M-XXX family, 32762M-XXX family, 32763M-XXX family, 38050M-XXX family, 40908M-XXX family and 60912M-XXX family) shipped to customers between January 29, 2004 (date code 0404) and December 1, 2012 (date code 1249).

NOTE: Any Series 20 Module, which does not have lamps, is not subject to this notice.

C. Identification of the facility supplying the basic component which contains a deviation:

Electroswitch
180 King Avenue
Weymouth, MA 02188

D. Nature of the deviation:

The orientation (90°) of the placement (soldering) of the internal wire on the resistor terminal used in the above referenced Series 20 Modules may allow the side cover screw to touch the wire insulation. The Engineering drawing nor Manufacturing assembly instructions did not clearly describe the correct orientation.

E. The date on which the information of such deviation was determined:

On the basis of our evaluation, it was determined on September 30, 2014 that Electroswitch does not have the capability to perform the evaluation to determine if a defect, which could create a substantial safety hazard, exists.

F. The number and location of all basic components which may contain the deviation:

Refer to Appendix A of this notification report.



ELECTROSWITCH • SWITCHES & RELAYS

UNIT OF ELECTRO SWITCH CORP.

180 King Avenue • Weymouth, MA 02188 • Phone 781-335-5200 • Fax 781-335-4253

G. The evaluation and corrective action which has been taken to identify and correct the deviation:

Refer to Appendix B of this notification report.

H. Any advice related to the identified deviation about the basic component that has been, is being or will be given to purchasers:

Purchasers are being advised to perform testing to verify operation or return the product to Electroswitch.

The following personnel may be contacted regarding this notification:

Larry Friedman
Quality Assurance Manager
781-607-3309

Ed Reszenski
Engineering Manager
781-607-3341

Sincerely,

Larry Friedman
Quality Assurance Manager

cc: K. Lloyd
E. Reszenski



ELECTROSWITCH • SWITCHES & RELAYS

UNIT OF ELECTRO SWITCH CORP.

180 King Avenue • Weymouth, MA 02188 • Phone 781-335-5200 • Fax 781-335-4253

Appendix A:

Customer Name	Electroswitch Order #	Ship Date	Year shipped	Item Number	Item description	Quantity	Lamps (Y/N)
DUKE ENERGYPROGRESS (CP&L)	336468	11/24/04	2004	38050M-94	SERIES 20 MODULE	1	Y
DUKE ENERGYPROGRESS (CP&L)	337139	03/04/05	2005	38050M-15	SERIES 20 MODULE	1	Y
DUKE ENERGYPROGRESS (CP&L)	340303	03/04/05	2005	38050M-29	SERIES 20 MODULE	1	Y
DUKE ENERGYPROGRESS (CP&L)	355341	11/07/05	2005	38050M-42	SERIES 20 MODULE	1	Y
DUKE ENERGYPROGRESS (CP&L)	375203	09/27/06	2006	38050M-132	SERIES 20 MODULE	6	Y
DUKE ENERGYPROGRESS (CP&L)	412063	10/08/08	2008	38050M-38	SERIES 20 MODULE	2	Y
DUKE ENERGYPROGRESS (CP&L)	414006	10/22/08	2008	38050M-100	SERIES 20 MODULE	2	Y
DUKE ENERGYPROGRESS (CP&L)	423388	04/24/09	2009	38050M-65	SEREIS 20 MODULE	1	Y
DUKE ENERGYPROGRESS (CP&L)	425802	05/19/09	2009	38050M-305	SERIES 20 MODULE	3	Y
DUKE ENERGYPROGRESS (CP&L)	427601	08/05/09	2009	38050M-73	SERIES 20 DUALTRAIN	3	Y
DUKE ENERGYPROGRESS (CP&L)	428233	06/30/09	2009	38050M-19	SERIES 20 MODULE	2	Y
DUKE ENERGYPROGRESS (CP&L)	433307	10/14/09	2009	38050M-35	SERIES 20 MODULE	1	Y
DUKE ENERGYPROGRESS (CP&L)	438929	03/04/10	2010	38050M-305	SERIES 20 MODULE	3	Y
DUKE ENERGYPROGRESS (CP&L)	440540	04/07/10	2010	38050M-65	SEREIS 20 MODULE	1	Y
DUKE ENERGYPROGRESS (CP&L)	441019	04/13/10	2010	38050M-40	SERIES 20 MODULE	2	Y
DUKE ENERGYPROGRESS (CP&L)	445323	07/06/10	2010	38050M-35	SERIES 20 MODULE	1	Y
DUKE ENERGYPROGRESS (CP&L)	447443	08/04/10	2010	38050M-305	SERIES 20 MODULE	3	Y
DUKE ENERGYPROGRESS (CP&L)	451350	11/24/10	2010	38050M-35	SERIES 20 MODULE	1	Y
DUKE ENERGYPROGRESS (CP&L)	451897	12/03/10	2010	38050M-42	SERIES 20 MODULE	1	Y
DUKE ENERGYPROGRESS (CP&L)	451897	12/03/10	2010	38050M-42	SERIES 20 MODULE	1	Y
DUKE ENERGYPROGRESS (CP&L)	452294	12/10/10	2010	38050M-42-1	SERIES 20 MODULE	1	Y
DUKE ENERGYPROGRESS (CP&L)	452668	12/16/10	2010	38050M-65	SEREIS 20 MODULE	2	Y
DUKE ENERGYPROGRESS (CP&L)	452668	12/20/10	2010	38050M-65	SEREIS 20 MODULE	1	Y
DUKE ENERGYPROGRESS (CP&L)	453462	01/14/11	2011	38050M-13	SERIES 20 MODULE	2	Y
DUKE ENERGYPROGRESS (CP&L)	453462	01/17/11	2011	38050M-47	SERIES 20 MODULE	2	Y
DUKE ENERGYPROGRESS (CP&L)	453462	01/17/11	2011	38050M-47	SERIES 20 MODULE	2	Y
DUKE ENERGYPROGRESS (CP&L)	454790	02/28/11	2011	38050M-43	SERIES 20 MODULE	1	Y
DUKE ENERGYPROGRESS (CP&L)	455118	02/28/11	2011	38050M-38	SERIES 20 MODULE	3	Y
DUKE ENERGYPROGRESS (CP&L)	455268	02/28/11	2011	38050M-103	SERIES 20 MODULE	2	Y
DUKE ENERGYPROGRESS (CP&L)	457448	04/01/11	2011	38050M-29	SERIES 20 MODULE	1	Y
DUKE ENERGYPROGRESS (CP&L)	457802	03/25/11	2011	38050M-40	SERIES 20 MODULE	2	Y
DUKE ENERGYPROGRESS (CP&L)	459103	04/25/11	2011	38050M-42-1	SERIES 20 MODULE	1	Y
DUKE ENERGYPROGRESS (CP&L)	459405	03/22/11	2011	38050M-65	SEREIS 20 MODULE	3	Y
DUKE ENERGYPROGRESS (CP&L)	462589	06/01/11	2011	38050M-120	SERIES 20 MODULE	2	Y
DUKE ENERGYPROGRESS (CP&L)	463535	05/24/11	2011	38050M-44	SERIES 20 MODULE	2	Y
DUKE ENERGYPROGRESS (CP&L)	463535	05/24/11	2011	38050M-45	SERIES 20 MODULE	3	Y
DUKE ENERGYPROGRESS (CP&L)	464383	07/15/11	2011	38050M-65	SEREIS 20 MODULE	2	Y
DUKE ENERGYPROGRESS (CP&L)	465241	07/29/11	2011	38050M-35	SERIES 20 MODULE	1	Y
DUKE ENERGYPROGRESS (CP&L)	465773	08/04/11	2011	38050M-29	SERIES 20 MODULE	5	Y



ELECTROSWITCH • SWITCHES & RELAYS

UNIT OF ELECTRO SWITCH CORP.

180 King Avenue • Weymouth, MA 02188 • Phone 781-335-5200 • Fax 781-335-4253

Customer Name	Electroswitch Order#	Ship Date	Year shipped	Item Number	Item description	Quantity	Lamps (Y/N)
DUKE ENERGYPROGRESS (CP&L)	467066	08/31/11	2011	38050M-38	SERIES 20 MODULE	3	Y
DUKE ENERGYPROGRESS (CP&L)	467246	09/14/11	2011	38050M-43	SERIES 20 MODULE	1	Y
DUKE ENERGYPROGRESS (CP&L)	470532	10/12/11	2011	38050M-47	SERIES 20 MODULE	3	Y
DUKE ENERGYPROGRESS (CP&L)	470918	11/04/11	2011	38050M-43	SERIES 20 MODULE	1	Y
DUKE ENERGYPROGRESS (CP&L)	474544	12/13/11	2011	38050M-40	SERIES 20 MODULE	7	Y
DUKE ENERGYPROGRESS (CP&L)	475926	01/20/12	2012	38050M-19	SERIES 20 MODULE	2	Y
DUKE ENERGYPROGRESS (CP&L)	479493	04/12/12	2012	38050M-43	SERIES 20 MODULE	3	Y
DUKE ENERGYPROGRESS (CP&L)	482085	05/01/12	2012	38050M-43	SERIES 20 MODULE	3	Y
DUKE ENERGYPROGRESS (CP&L)	482505	05/11/12	2012	38050M-102	SERIES 20 MODULE	4	Y
DUKE ENERGYPROGRESS (CP&L)	484752	07/05/12	2012	38050M-40	SERIES 20 MODULE	1	Y
DUKE ENERGYPROGRESS (CP&L)	487506	08/28/12	2012	38050M-35	SERIES 20 MODULE	1	Y
DUKE ENERGYPROGRESS (CP&L)	489866	09/28/12	2012	38050M-47	SERIES 20 MODULE	3	Y
DUKE ENERGYPROGRESS (CP&L)	490642	10/19/12	2012	38050M-65	SERIES 20 MODULE	3	Y
DUKE ENERGYPROGRESS (CP&L)	490976	10/30/12	2012	38050M-40	SERIES 20 MODULE	2	Y
DUKE ENERGYPROGRESS (CP&L)	490976	10/30/12	2012	38050M-45	SERIES 20 MODULE	1	Y
GEORGIA POWER COMPANY	485915	08/09/12	2012	32761M-106D	SERIES 20 MODULE	1	Y
GEORGIA POWER COMPANY	489682	09/24/12	2012	32761M-124D	SERIES 20 MODULE	1	Y
GEORGIA POWER COMPANY/VOGTLE	320929	01/29/04	2004	32763M-027D	SERIES 20 MODULE	2	Y
GEORGIA POWER COMPANY/VOGTLE	355583	09/26/05	2005	32761M-173D	SERIES 20 MODULE	2	Y
GEORGIA POWER COMPANY/VOGTLE	355583	09/26/05	2005	32762M-178D	SERIES 20 MODULE	1	Y
GEORGIA POWER COMPANY/VOGTLE	356913	10/19/05	2005	32761M-120D	SERIES 20 MODULE	1	Y
GEORGIA POWER COMPANY/VOGTLE	356939	10/25/05	2005	32761M-215D	SERIES 20 MODULE	2	Y
GEORGIA POWER COMPANY/VOGTLE	357187	10/14/05	2005	32761M-124D	SERIES 20 MODULE	1	Y
GEORGIA POWER COMPANY/VOGTLE	364704	02/17/06	2006	32762M-111D	SERIES 20 MODULE	1	Y
GEORGIA POWER COMPANY/VOGTLE	364704	02/17/06	2006	32762M-114D	SERIES 20 MODULE	1	Y
GEORGIA POWER COMPANY/VOGTLE	366754	03/20/06	2006	32763M-029D	SERIES 20 MODULE	1	Y
GEORGIA POWER COMPANY/VOGTLE	366754	03/20/06	2006	32763M-047D	SERIES 20 MODULE	1	Y
GEORGIA POWER COMPANY/VOGTLE	380955	12/19/06	2006	32761M-187D	SERIES 20 MODULE	1	Y
GEORGIA POWER COMPANY/VOGTLE	382592	02/01/07	2007	32761M-215D	SERIES 20 MODULE	2	Y
GEORGIA POWER COMPANY/VOGTLE	382933	03/05/07	2007	32761M-175D	SERIES 20 MODULE	2	Y
GEORGIA POWER COMPANY/VOGTLE	386896	05/04/07	2007	32761M-155D	SERIES 20 MODULE	2	Y
GEORGIA POWER COMPANY/VOGTLE	387807	05/15/07	2007	32761M-175D	SERIES 20 MODULE	3	Y
GEORGIA POWER COMPANY/VOGTLE	395189	11/05/07	2007	30994M-103D	SERIES 20 MODULE	1	Y
GEORGIA POWER COMPANY/VOGTLE	396420	12/14/07	2007	30993M-117D	SERIES 20 MODULE	2	Y
GEORGIA POWER COMPANY/VOGTLE	405457	03/21/08	2008	29172M-284D	SERIES 20 MODULE	1	Y
GEORGIA POWER COMPANY/VOGTLE	407331	05/22/08	2008	29172M-284D	SERIES 20 MODULE	1	Y
GEORGIA POWER COMPANY/VOGTLE	409547	09/08/08	2008	29172M-284D	SERIES 20 MODULE	1	Y
GEORGIA POWER COMPANY/VOGTLE	409558	08/11/08	2008	32763M-036D	SERIES 20 MODULE	1	Y
GEORGIA POWER COMPANY/VOGTLE	411797	08/14/08	2008	32761M-104D	SERIES 20 MODULE	1	Y
GEORGIA POWER COMPANY/VOGTLE	415213	11/20/08	2008	30993M-181D	SERIES 20 MODULE	1	Y
GEORGIA POWER COMPANY/VOGTLE	431258	10/02/09	2009	32761M-153D	SERIES 20 MODULE	2	Y
GEORGIA POWER COMPANY/VOGTLE	444566	06/28/10	2010	30993M-181D	SERIES 20 MODULE	1	Y
GEORGIA POWER COMPANY/VOGTLE	445643	06/24/10	2010	30994M-103D	SERIES 20 MODULE	1	Y

**ELECTROSWITCH • SWITCHES & RELAYS**

UNIT OF ELECTRO SWITCH CORP.

180 King Avenue • Weymouth, MA 02188 • Phone 781-335-5200 • Fax 781-335-4253

Customer Name	Electroswitch Order #	Ship Date	Year shipped	Item Number	Item description	Quantity	Lamps (Y/N)
TENNESSEE VALLEY AUTH	417825	01/27/09	2009	60912M-42	SERIES 20 MODULE	6	Y
TENNESSEE VALLEY AUTH	430582	11/06/09	2009	60912M-122	SERIES 20 SWITCH	5	Y
TENNESSEE VALLEY AUTH	430582	10/23/09	2009	60912M-128A	SERIES 20 MODULE	9	Y
TENNESSEE VALLEY AUTH	430582	11/10/09	2009	60912M-15	SERIES 20 MODULE	3	Y
TENNESSEE VALLEY AUTH	430582	11/09/09	2009	60912M-2	SERIES 20 MODULE	5	Y
TENNESSEE VALLEY AUTH	430582	11/06/09	2009	60912M-24	SERIES 20 MODULE	14	Y
TENNESSEE VALLEY AUTH	430582	11/11/09	2009	60912M-24	SERIES 20 MODULE	8	Y
TENNESSEE VALLEY AUTH	430582	10/27/09	2009	60912M-8	SERIES 20 MODULE	9	Y
TENNESSEE VALLEY AUTH	431008	10/16/09	2009	60912M-200	SERIES 20 MODULE	1	Y
TENNESSEE VALLEY AUTH	431008	10/16/09	2009	60912M-200	SERIES 20 MODULE	1	Y
TENNESSEE VALLEY AUTH	437827	02/19/10	2010	60912M-20	SERIES 20 MODULE	4	Y
TENNESSEE VALLEY AUTH	446162	06/22/10	2010	60912M-32	SERIES 20 MODULE	2	Y
TENNESSEE VALLEY AUTH	451779	11/15/10	2010	60912M-211	SERIES 20 MODULE	8	Y
ENTERGY CORPORATION	461648	05/17/11	2011	40908M-07	SERIES 20 MODULE	2	Y

Electroswitch	NON CONFORMANCE REPORT	Rev: J	Document no: NONCON-1 CAR #14-001 Rev. A
---------------	-------------------------------	-----------	---

APPENDIX B

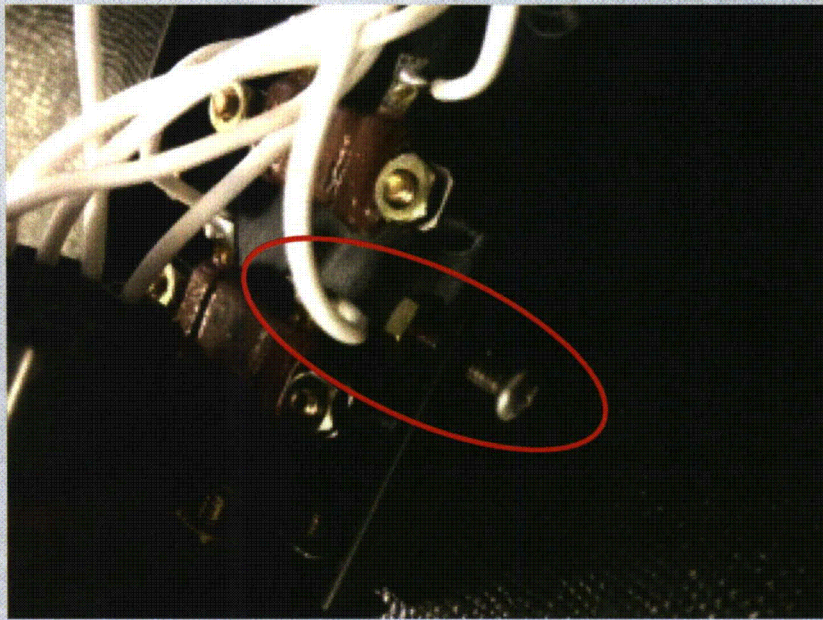
A
N
Y

E
M
P
L
O
Y
E

DATE: 9/10/14	REF. #: Email from Dale Mathers of TVA	INITIATED BY: Larry Friedman
ITEM: 60912M-xxx Series 20 Module		
NONCONFORMANCE : Workmanship		AREA: Customer complaint

DESCRIPTION OF NON CONFORMANCE: **(RECEIVED IN AN EMAIL FROM DALE MATHERS DATED SEPT. 10, 2014)**

An email was received from Dale Mathers describing a situation he had encountered on two (2) Series 20 Modules (part numbers 60912M-24 with date 0944 and 60912M-8 with date code 0943). He stated that the screw, when fully inserted, hits the white wire. They have had two switches short out when it hits the wire, thereby, affecting the green LED.



Q
C

M
G
R

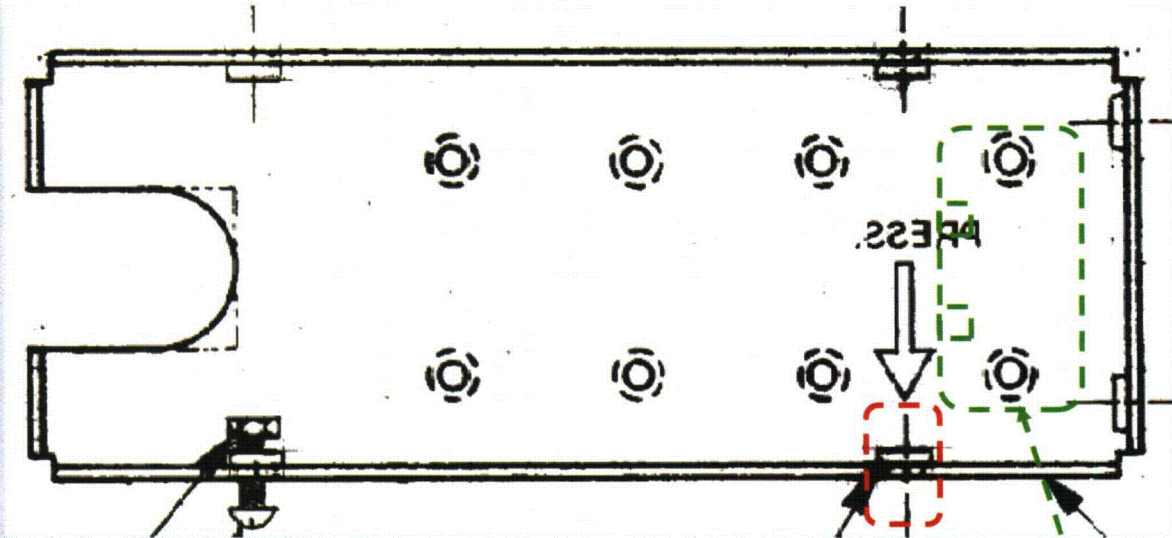
IMMEDIATE DISPOSITION/SHORT TERM FIX: (DUE WITHIN 10 WORKING DAYS OF FINDING)

1. Immediate disposition once information was received:

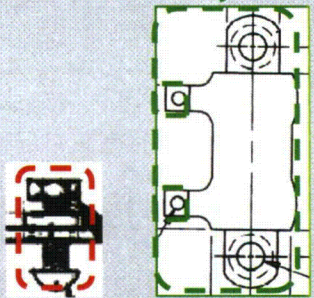
Evaluation: Reviewed Engineering switch drawings and Manufacturing assembly instructions.
Results: It was found that this issue was previously identified in the November 2012 timeframe. At that time, a visual aid showing the incorrect and correct orientation of the wire on the resistor was developed. Specifically, it showed the wires on the resistor were to be soldered in line with the terminal rather than at 90°.

* All blocks to be completed and legible – no pencil

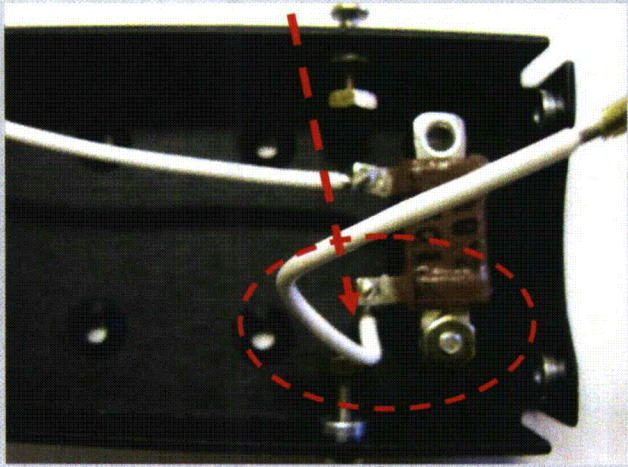
Electroswitch	NON CONFORMANCE REPORT	Rev: J	Document no: NONCON-1 CAR #14-001 Rev. A
---------------	-------------------------------	-----------	---



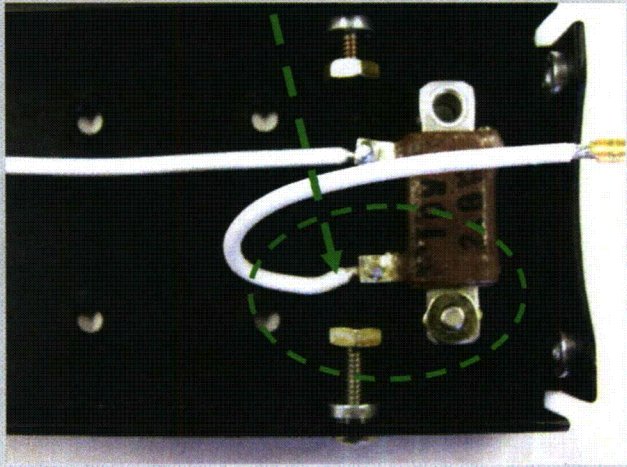
Location and length of screw in relation to location and length of resistor terminal on top panel do not allow for any interference. Orientation of wire to terminal could allow screw to touch wire insulation. Short could only occur if screw penetrates insulation or insulation is stripped to far back.



Incorrect orientation



Correct orientation



To prevent possibility of cover screw having contact with the wire attached to the resistor.

* All blocks to be completed and legible – no pencil

Electroswitch	NON CONFORMANCE REPORT	Rev: J	Document no: NONCON-1 CAR #14-001 Rev. A
---------------	-------------------------------	-----------	---

2. Researched shipment history. Found the following shipments since 2009 –

Order	Release #	Customer	Customer P.O.	Shipped	Item	Resistors movable Resistors	Nuclear C.O.C.	Shipment date
CO 447337	1	ATC/Argo Turboserve	00143145	1	60912M-1	Y 2	No	7/27/2010
CO 430582	1	TVA	00078567	5	60912M-122	Y 2	Yes	11/6/2009
CO 430582	1	TVA	00078567	9	60912M-128A	N 4	Yes	10/23/2009
CO 430582	1	TVA	00078567	3	60912M-15	Y 2	Yes	11/10/2009
CO 430582	1	TVA	00078567	5	60912M-2	Y 2	Yes	11/9/2009
CO 437827	1	TVA	54889-WB2-09-0488	4	60912M-20	N 2	Yes	2/19/2010
CO 447337	1	ATC/Argo Turboserve	00143145	6	60912M-20	N 2	Yes	7/27/2010
CO 431008	1	TVA	00078754-1, Rev 1	1	60912M-200	N 2	Yes	10/16/2009
CO 431008	1	TVA	00078754-1, Rev 1	1	60912M-200	N 2	Yes	10/16/2009
CO 430582	1	TVA	00078567	3	60912M-202	0	Yes	10/26/2009
CO 433446	1	ATC/Argo Turboserve	00120750	5	60912M-204	N 4	No	9/30/2009
CO 442720	1	ATC/Argo Turboserve	00134271	1	60912M-204	N 4	No	4/28/2010
CO 443114	1	ATC/Argo Turboserve	00134977	2	60912M-204	N 4	No	4/28/2010
CO 439341	1	ATC/Argo Turboserve	00129502	4	60912M-205	N 4	No	4/23/2010
CO 439341	1	ATC/Argo Turboserve	00129502	4	60912M-206A	N 4	No	4/22/2010
CO 439341	1	ATC/Argo Turboserve	00129502	1	60912M-207	0	No	4/21/2010
CO 444416	1	TVA	106556	2	60912M-209	N 2	No	6/11/2010
CO 470538	1	ATC/Argo Turboserve	00186291	3	60912M-209	N 2	No	10/25/2011
CO 518192 (RA #5461)	1	TVA	CS-RA 5461	1	60912M-209	N 2	No	1/17/2014
CO 447337	1	ATC/Argo Turboserve	00143145	2	60912M-21	N 2	No	7/27/2010
CO 460572	1	ATC/Argo Turboserve	00163673	1	60912M-21	N 2	No	3/28/2011

* All blocks to be completed and legible – no pencil

Electroswitch	NON CONFORMANCE REPORT	Rev: J	Document no: NONCON-1 CAR #14-001 Rev. A
---------------	-------------------------------	-----------	---

Order	Release #	Customer	Customer P.O.	Shipped	Item	Resistors movable	Resistors	Nuclear C.O.C.	Shipment date
CO 445448	1	ATC/Argo Turboserve	00136557	4	60912M-210	N	2	No	6/23/2010
CO 453082	1	ATC/Argo Turboserve	00151227	4	60912M-210	N	2	No	12/22/2010
CO 509287	1	ATC/Argo Turboserve	00280219	1	60912M-210	N	2	No	8/21/2013
CO 447337	1	ATC/Argo Turboserve	00143145	1	60912M-211	N	2	No	7/27/2010
CO 451779	1	TVA ATC/Argo	158015	8	60912M-211	N	2	Yes	11/15/2010
CO 453082	1	ATC/Argo Turboserve	00151227	8	60912M-212	N	4	No	12/22/2010
CO 509287	1	ATC/Argo Turboserve	00280219	1	60912M-212	N	4	No	8/22/2013
CO 453082	1	ATC/Argo Turboserve	00151227	4	60912M-213	N	2	No	12/22/2010
CO 492819	1	ATC/Argo Turboserve	00238369	8	60912M-214	Y	2	No	11/7/2012
CO 500501	1	ATC/Argo Turboserve	00256609	2	60912M-216	Y	1	No	3/26/2013
CO 507031	1	Carlton-Bates	1941-016950	1	60912M-216	Y	1	No	7/3/2013
CO 430582	1	TVA ATC/Argo	00078567	14	60912M-24	Y	2	Yes	11/6/2009
CO 430582	1	TVA ATC/Argo	00078567	8	60912M-24	Y	2	Yes	11/11/2009
CO 439338	1	ATC/Argo Turboserve	00129499	1	60912M-32	N	1	No	2/9/2010
CO 446162	1	TVA ATC/Argo	119397-3	2	60912M-32	N	1	Yes	6/22/2010
CO 439341	1	ATC/Argo Turboserve	00129502	2	60912M-40	N	2	No	4/21/2010
CO 474130	1	TVA	CC-J.Kely-10/12/11	2	60912M-401		0	No	12/5/2011
CO 417825	1	TVA ATC/Argo	00073295	6	60912M-42	N	2	Yes	1/27/2009
CO 430582	1	TVA ATC/Argo	00078567	9	60912M-8	Y	2	Yes	10/27/2009

3. Purged stock. Results: There were no Series 20 Modules in stock or in process.

RESPONDED DATE: 9/17/14

DISPOSITIONED BY:
LARRY FRIEDMAN

* All blocks to be completed and legible – no pencil

Electroswitch	NON CONFORMANCE REPORT	Rev: J	Document no: NONCON-1 CAR #14-001 Rev. A
---------------	-------------------------------	-----------	---

DEPARTMENT MGR

WHAT CAUSED THE NONCONFORMANCE? (ROOT CAUSE):

The root cause has been determined to be the lack of documentation describing the orientation of the placement (soldering) of the wire on the resistor terminal. The orientation at 90° could allow the screw to touch the wire insulation.

SIGNATURE: LARRY FRIEDMAN

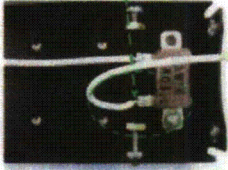
ACTIONS TO PREVENT RECURRENCE (CORRECTIVE ACTION):

1. Quality had developed a visual aid for the Manufacturing assembly and Quality inspection personnel.

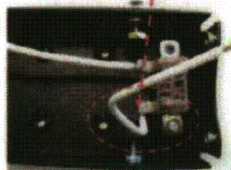
QUALITY ALERT!

To identify correct wire orientation for
38050M-XXX switch assemblies

Correct orientation



Incorrect orientation



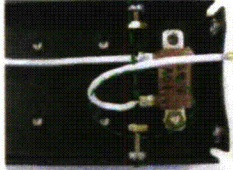
To prevent possibility of cover screw having contact with the wire attached to the resistor.

Approved By: [Signature] (MFG) Date: 11-28-10
 Approved By: Larry Friedman (QC) Date: 11/28/10


QUALITY ALERT!

To identify correct wire orientation for all
Series 20 Modules

Correct orientation



Incorrect orientation



To prevent possibility of cover screw having contact with the wire attached to the resistor.

Approved By: [Signature] (MFG) Date: 9-29-14
 Approved By: Larry Friedman (QC) Date: 9/29/14

NOTE: Even though the Quality Alert identifies the 38050M-XXX switch assemblies only, it was to encompass all of the Series 20 Modules. The Quality Alert has been revised accordingly.

Preventive Action Report Reference # (Where Applicable):

ASSIGNED TO: * Larry Friedman DUE DATE: 9/30/14

SIGNATURE AT COMPLETION: LARRY FRIEDMAN DATE: 9/29/14

* All blocks to be completed and legible – no pencil

Electroswitch	NON CONFORMANCE REPORT	Rev: J	Document no: NONCON-1 CAR #14-001 Rev. A
---------------	-------------------------------	-----------	---

Q
M

CLOSE OUT DETAILS (REVIEW EFFECTIVENESS OF ACTIONS TAKEN):

1. Quality will monitor all future production runs of this switch to ensure this type of discrepancy does not reoccur. This Corrective Action Report will be updated with results after a 30 day period of time or two subsequent manufacturing builds of the Series 20 Module.

SIGNATURE:
Larry Friedman

DATE:
TARGET DATE: 11/1/14

A
N
Y

COMMENTS:

It is noted that Electroswitch does not have the capability to perform the evaluation to determine if a defect exists and Electroswitch will inform the purchasers.

* All blocks to be completed and legible – no pencil