

# STRUCTURAL ASSESSMENT OF SEABROOK STATION

---

## Findings and Structural Testing Plan

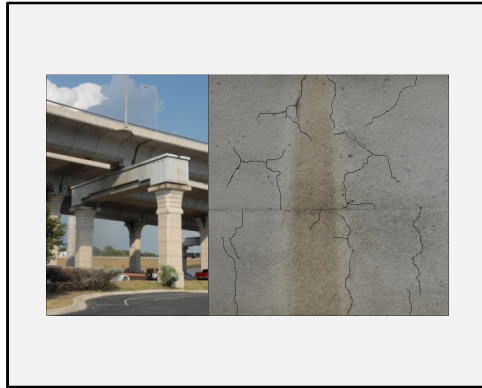


OGUZHAN BAYRAK, Ph.D., P.E.  
Ferguson Structural Engineering Laboratory  
The University of Texas at Austin

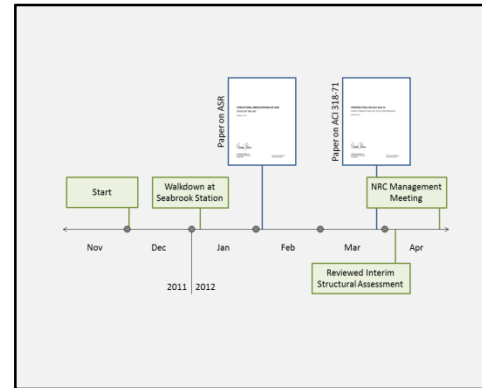
April 23, 2012

# AGENDA

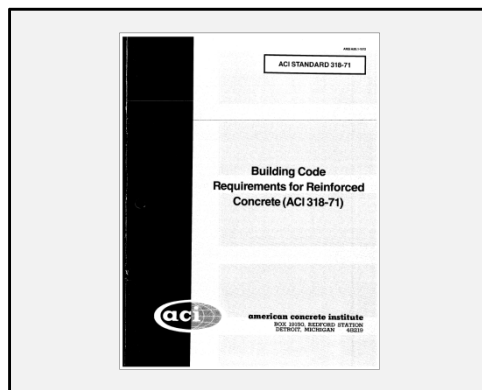
## KNOWLEDGE BASE



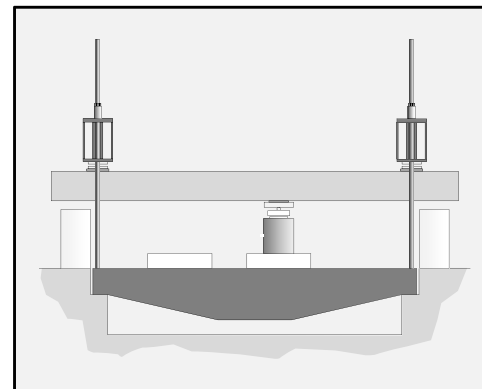
## INVOLVEMENT TO DATE



## INTERIM ASSESSMENT



## STRUCTURAL TESTING

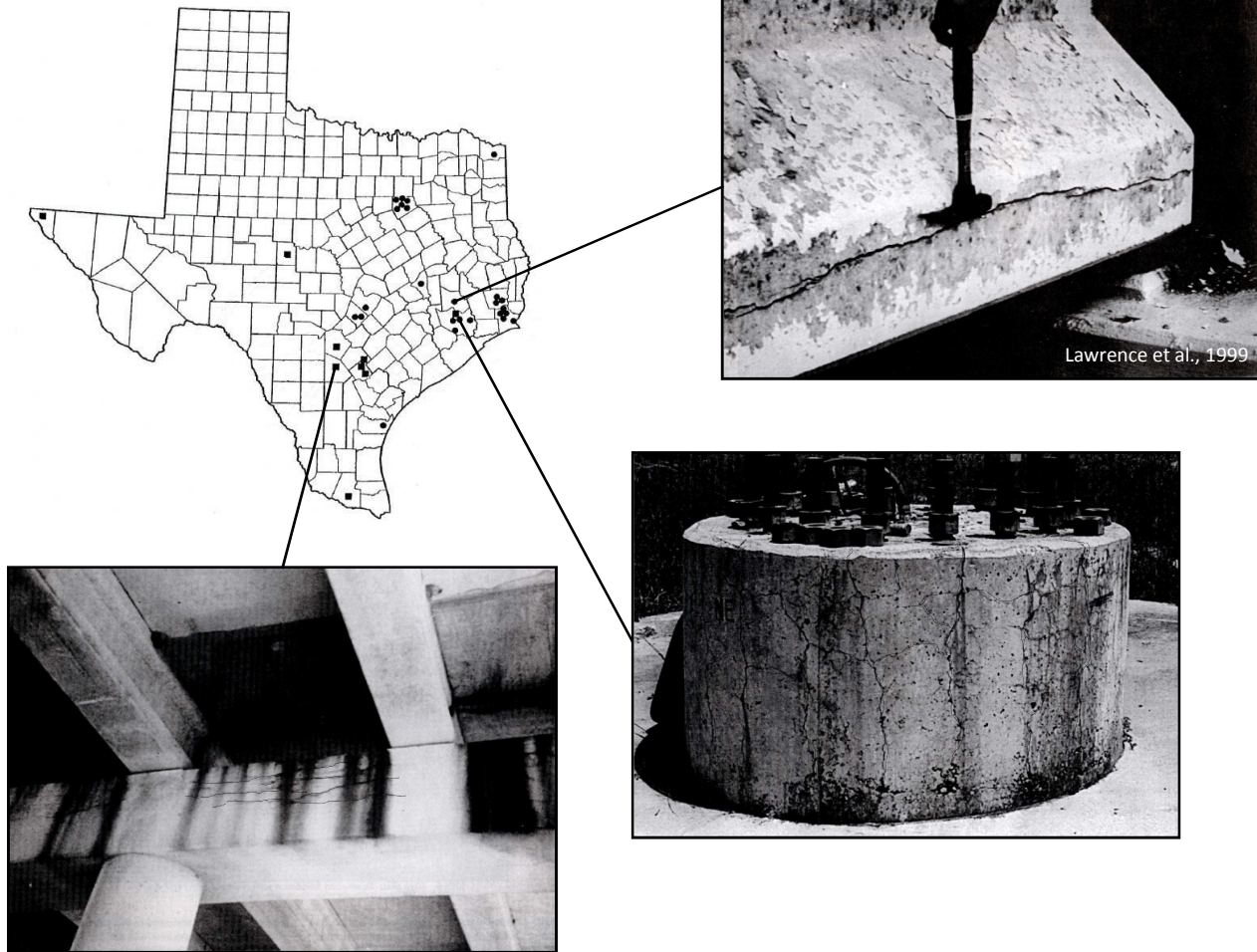


**KNOWLEDGE BASE**

## OGUZHAN BAYRAK, Ph.D., P.E.

- Investigations into the effects of ASR in highway structures were initiated in 2005
- Effects of ASR on multiple aspects of structural behavior have been evaluated through large-scale laboratory testing
- Critical insights gained from laboratory testing results and international literature

# ASR IN THE STATE OF TEXAS



# LARGE-SCALE EXPERIMENTAL RESEARCH



Flexure and Shear Behavior

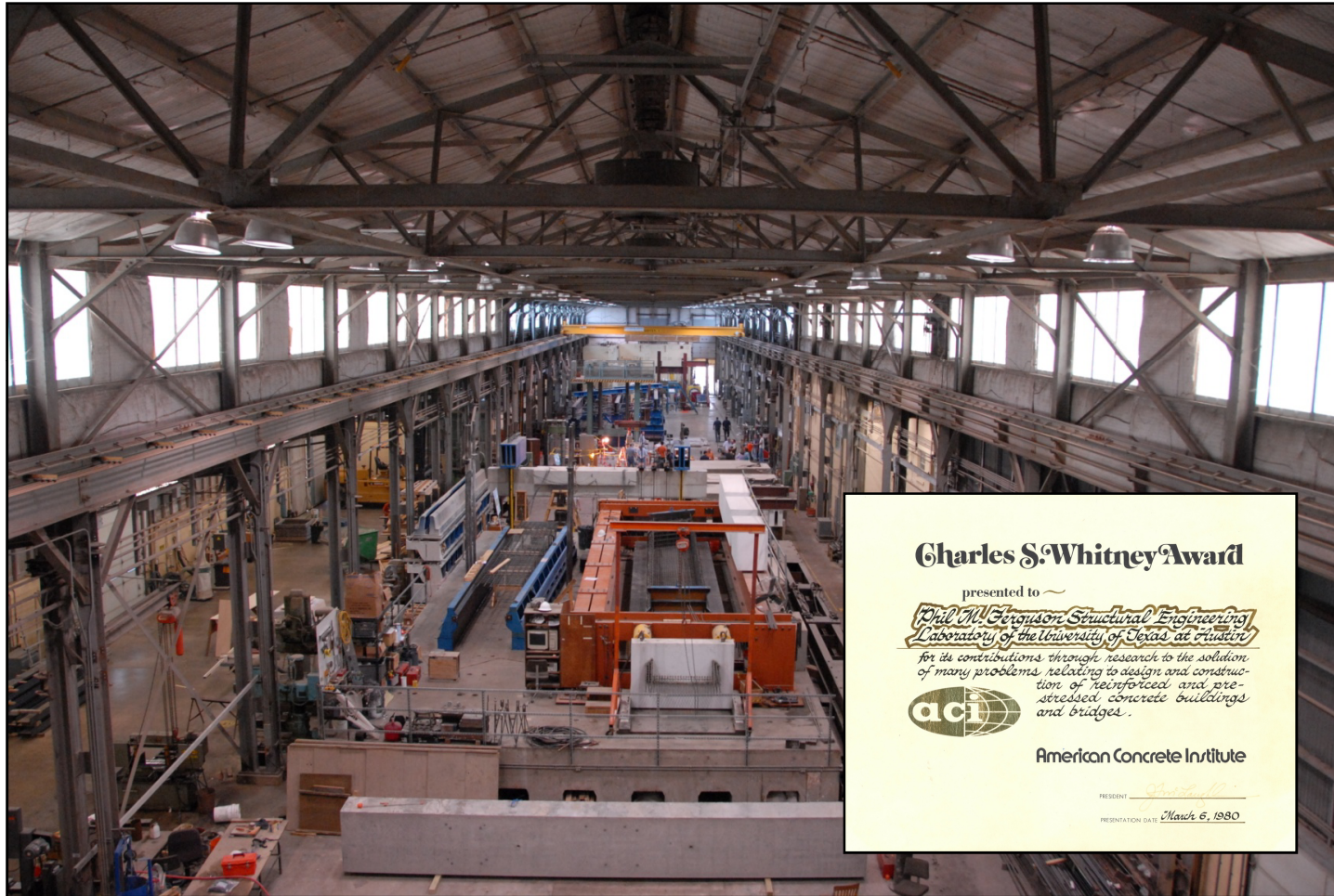


Dapped End Behavior



Anchor Bolt Behavior

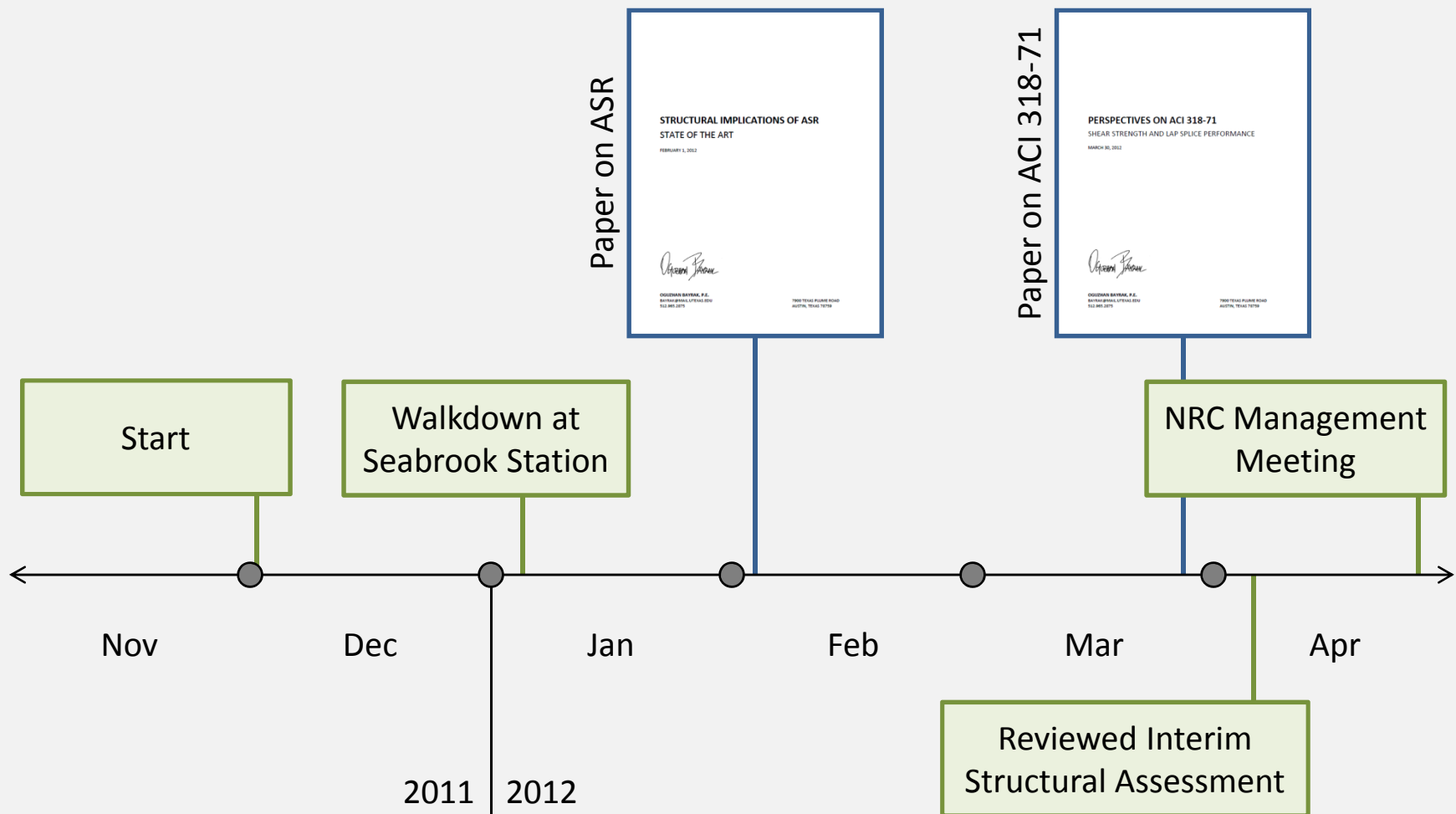
# FERGUSON STRUCTURAL ENGINEERING LABORATORY



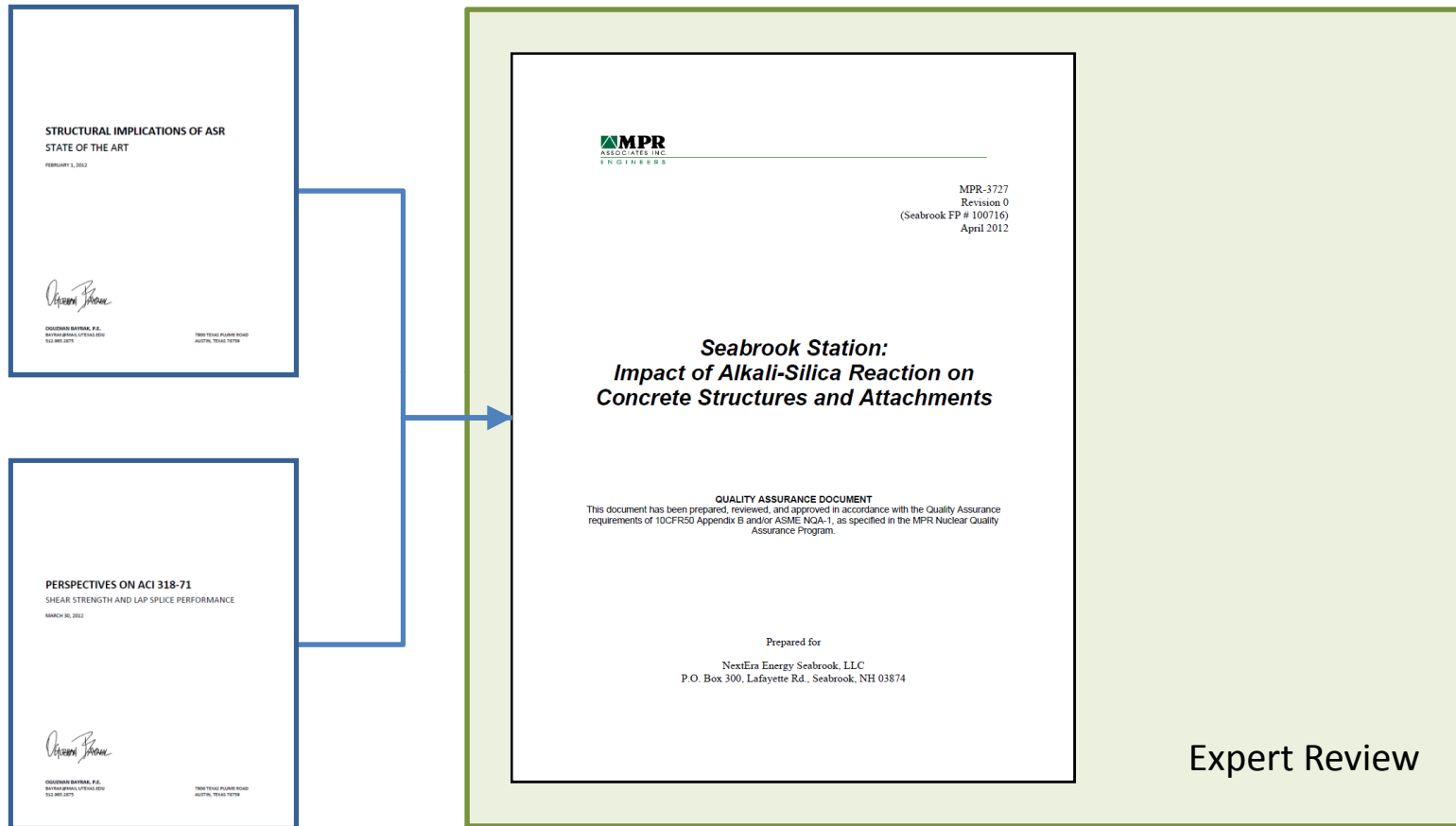
# INVOLVEMENT TO DATE



# INVOLVEMENT TO DATE

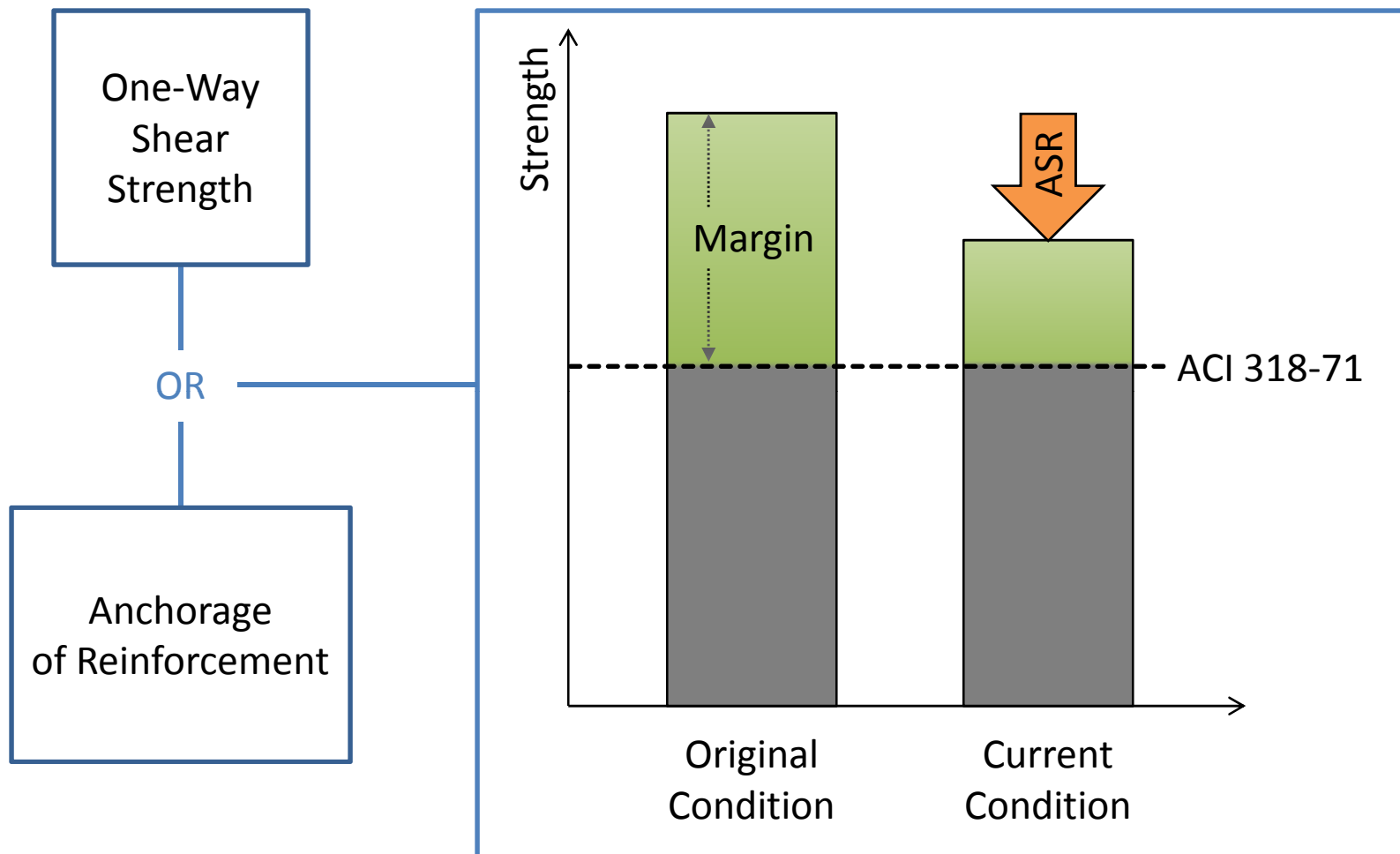


# INTERIM STRUCTURAL ASSESSMENT



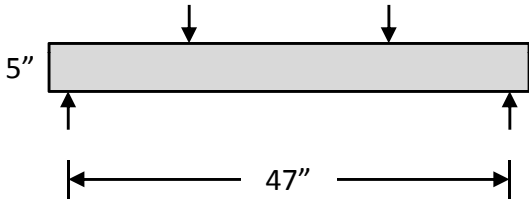
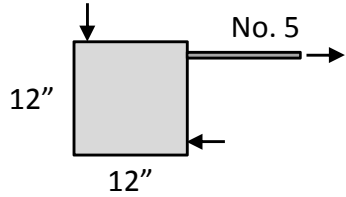
# INTERIM ASSESSMENT

# INTERIM ASSESSMENT



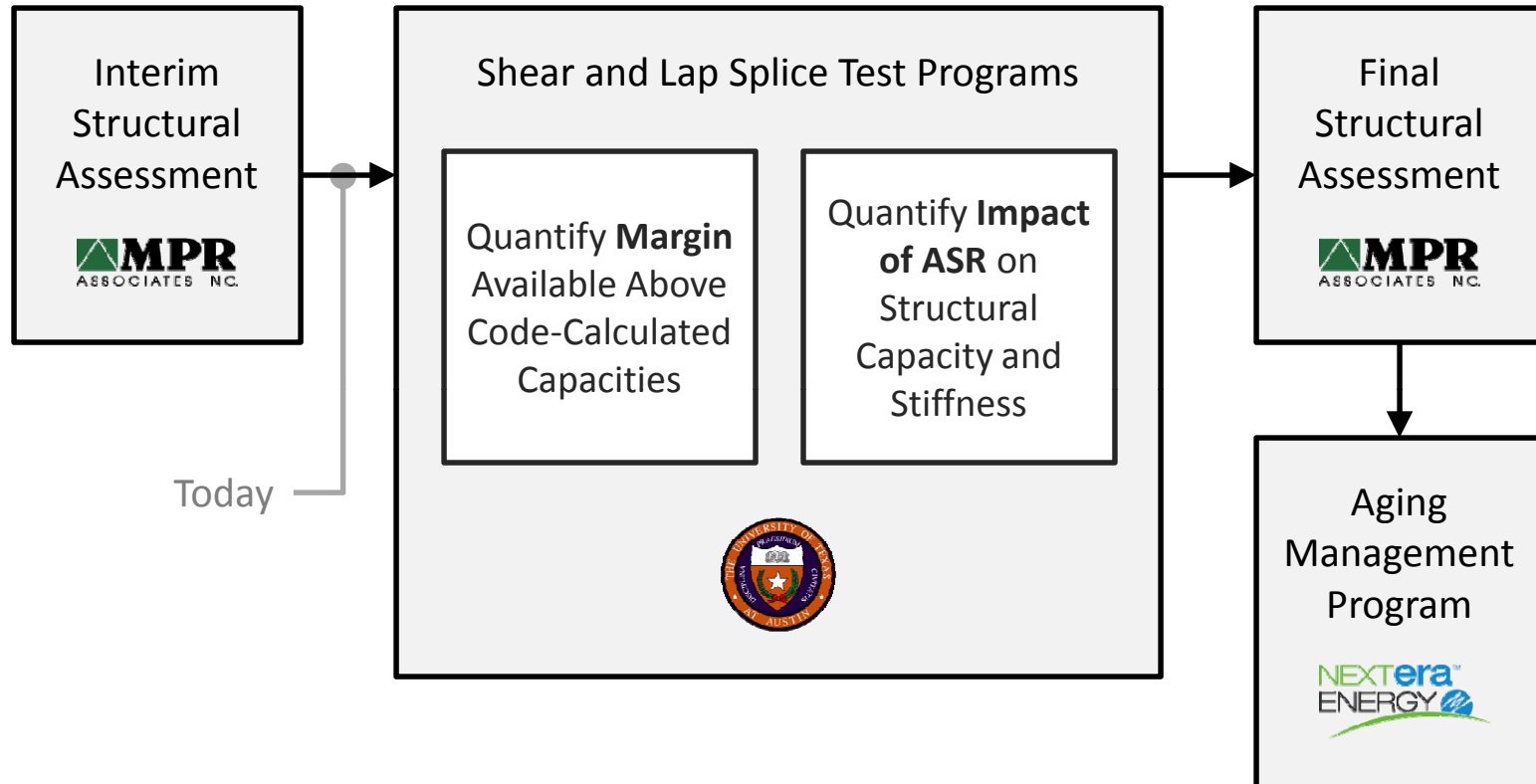
# INTERIM ASSESSMENT

Performance of large ASR-affected structures is not well represented by current test data set.

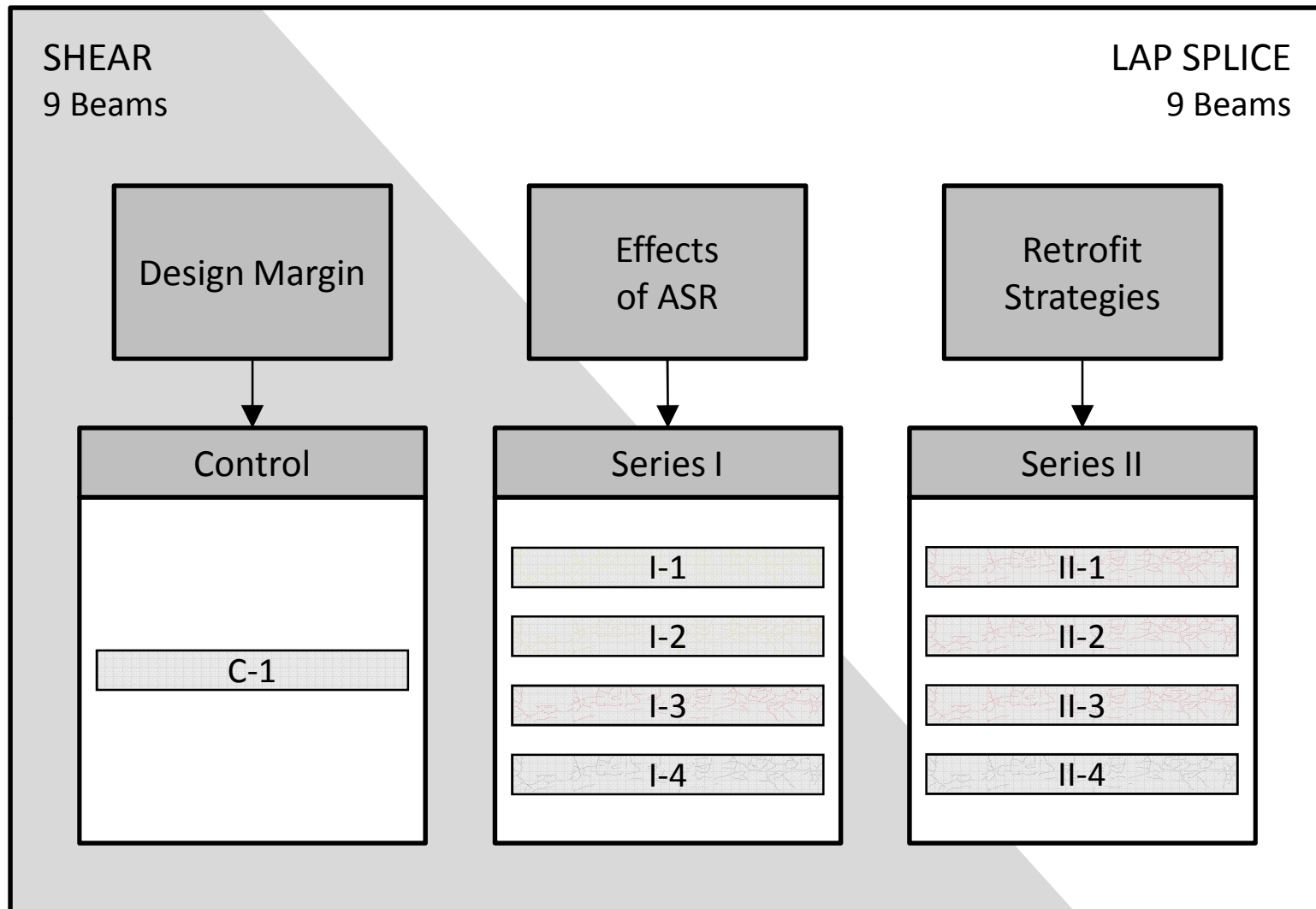
Limit State	Lower-Bound Reference	Specimen Scale
One-Way Shear without Transverse Reinforcement	Ahmed et al., 1998	
Reinforcement Anchorage without Transverse Reinforcement	Chana, 1989	

# STRUCTURAL TESTING

# METHODOLOGY



# TEST PROGRAMS





# REPLICATION OF SEABROOK DETAILS

The reinforcement detailing will:

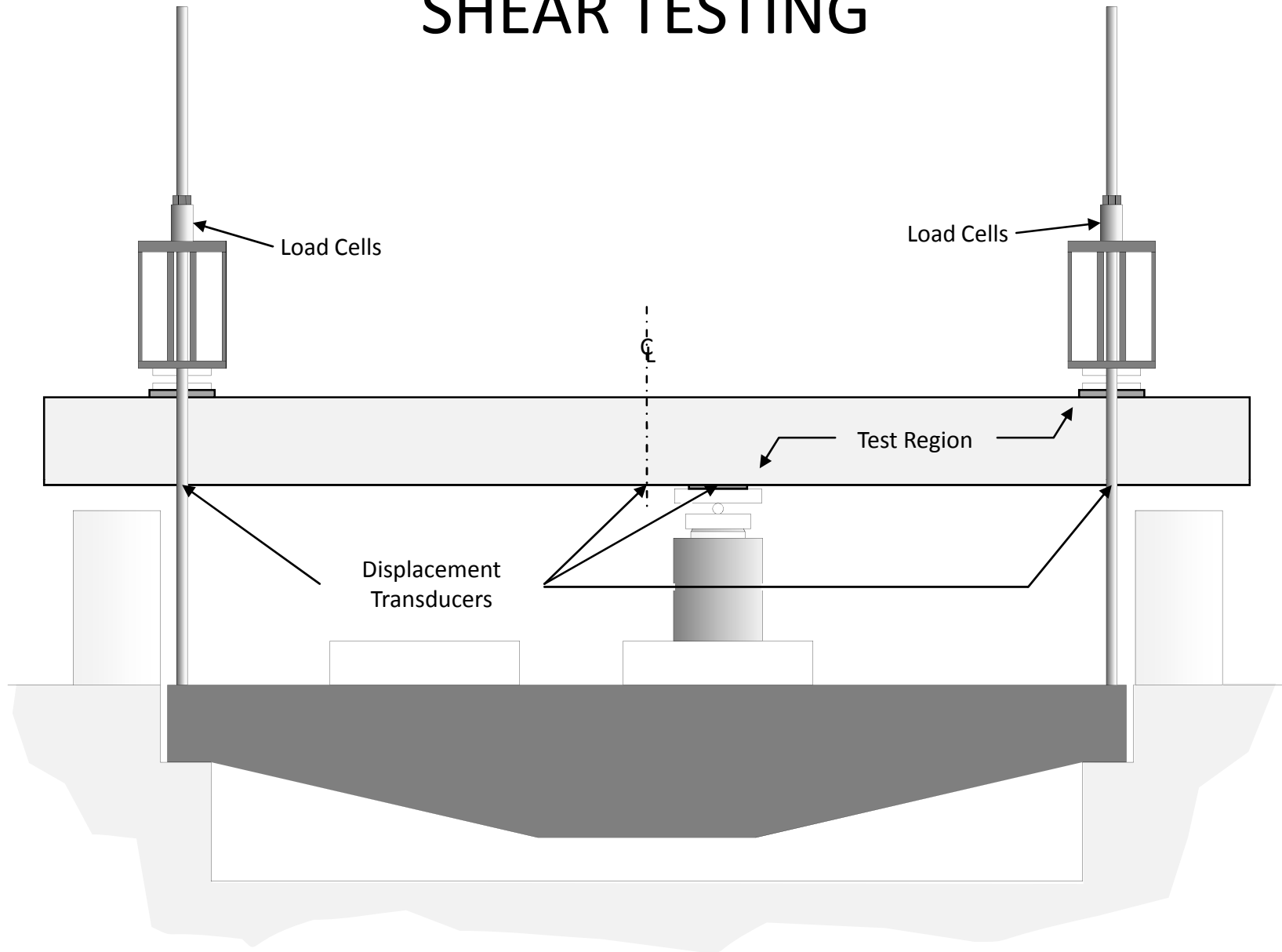
- represent the lack of through-thickness reinforcement within tunnel walls
- enable focused study of shear and anchorage behavior at current and future levels of ASR degradation

# REPLICATION OF SEABROOK DETAILS

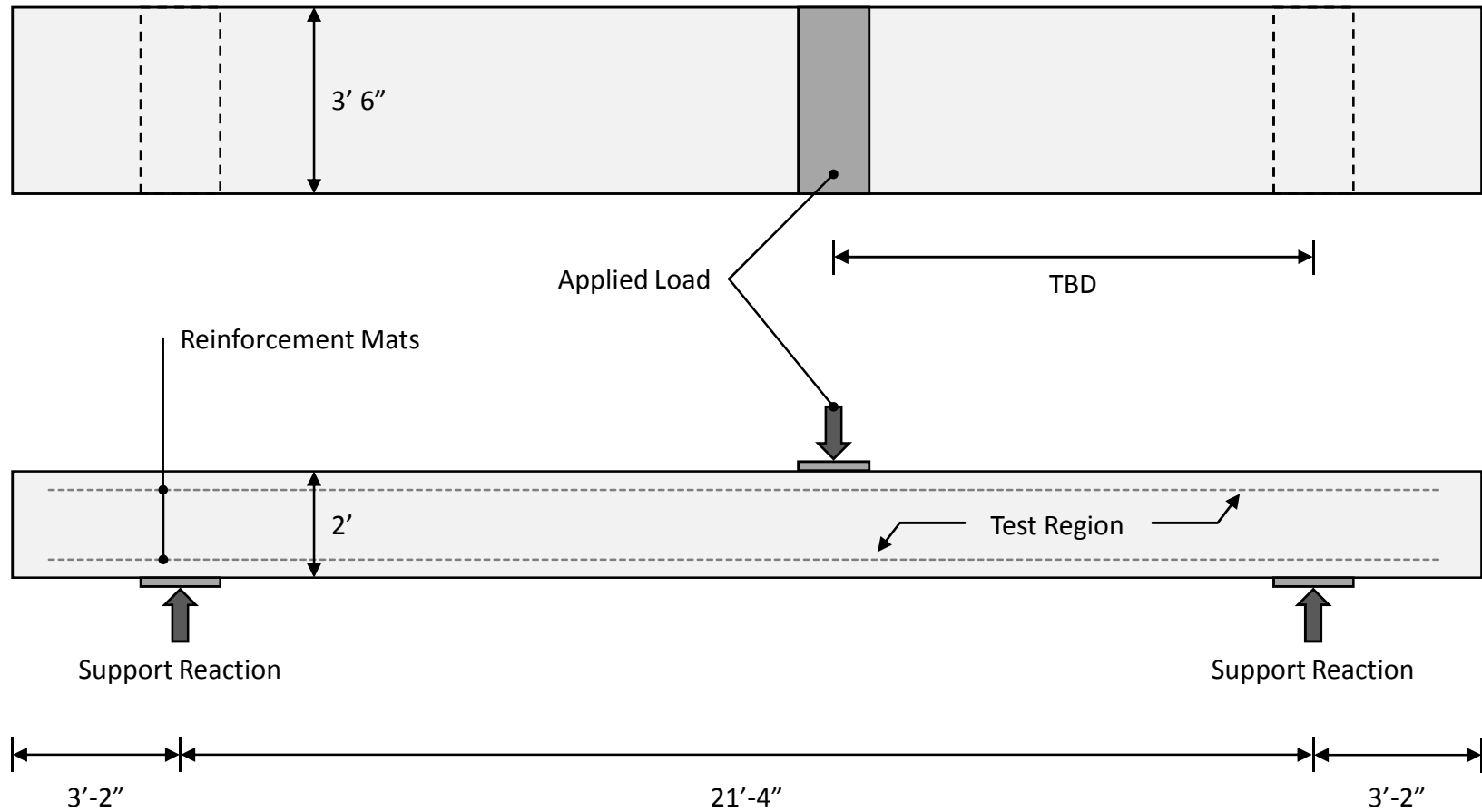
The concrete mixture will:

- be developed through trial batching with representative coarse and fine aggregates
- be sufficiently reactive to obtain the necessary data in a timely manner
- develop mechanical properties that are representative of Seabrook structures

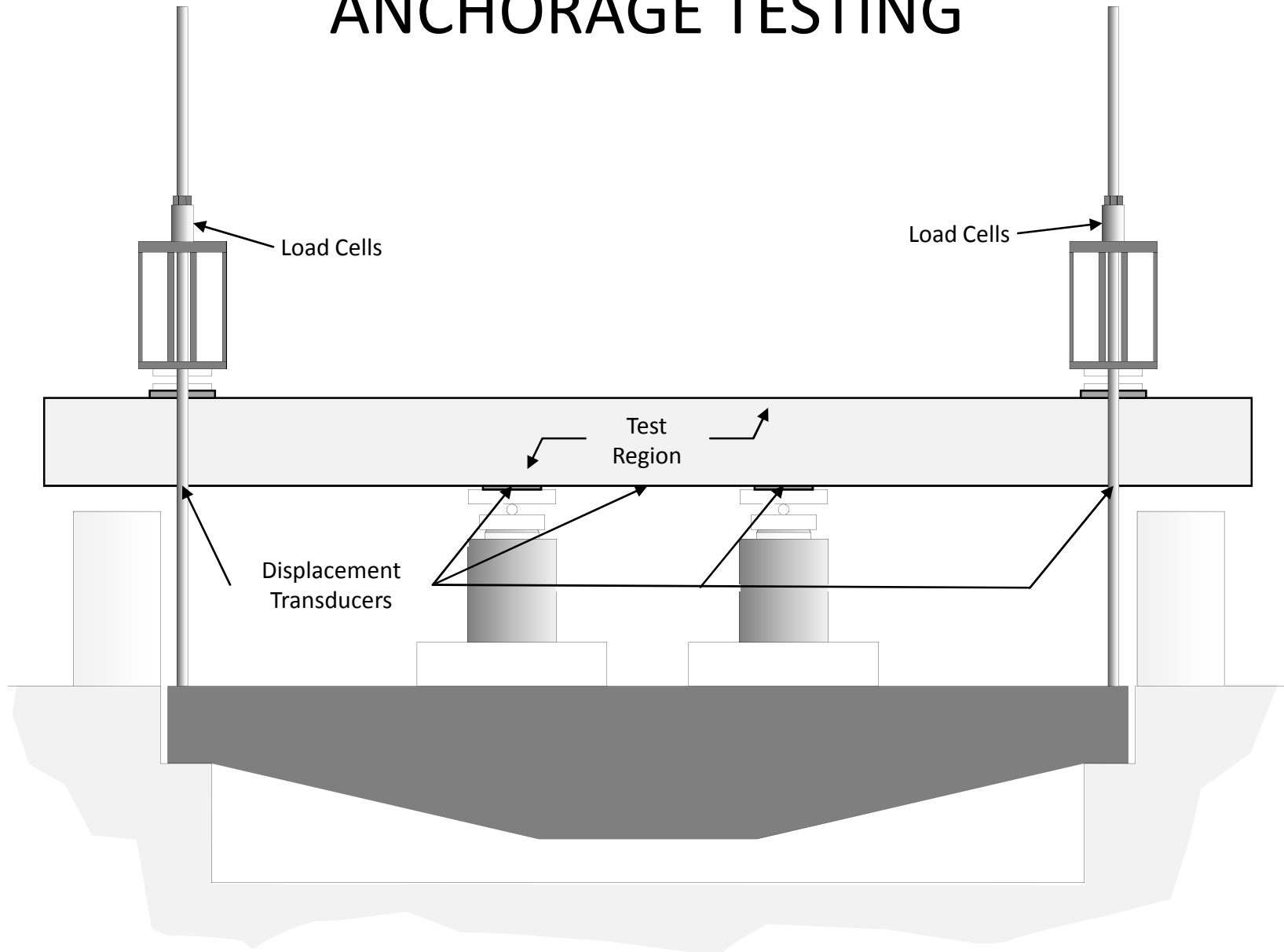
# SHEAR TESTING



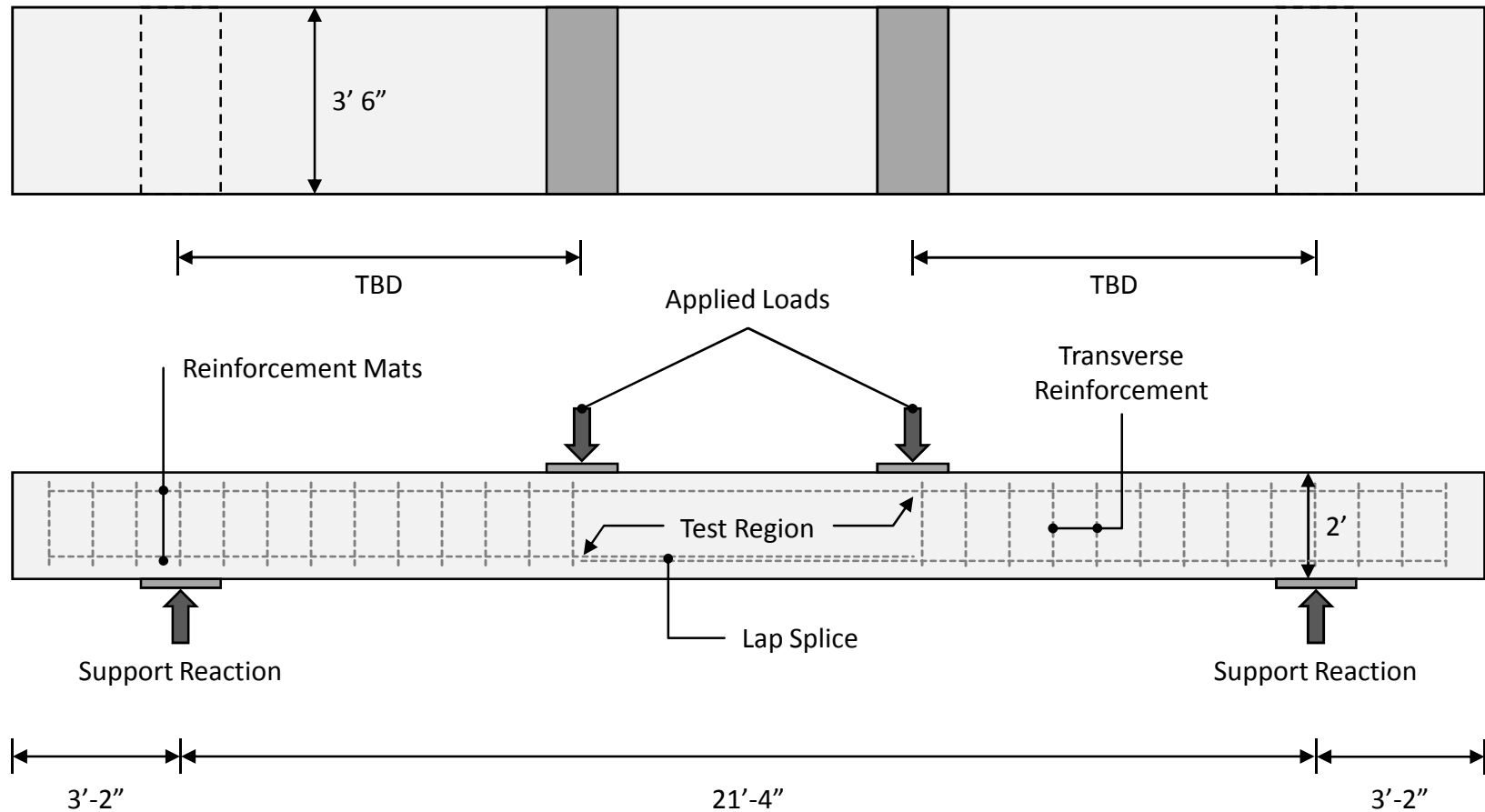
# SHEAR TESTING



# ANCHORAGE TESTING



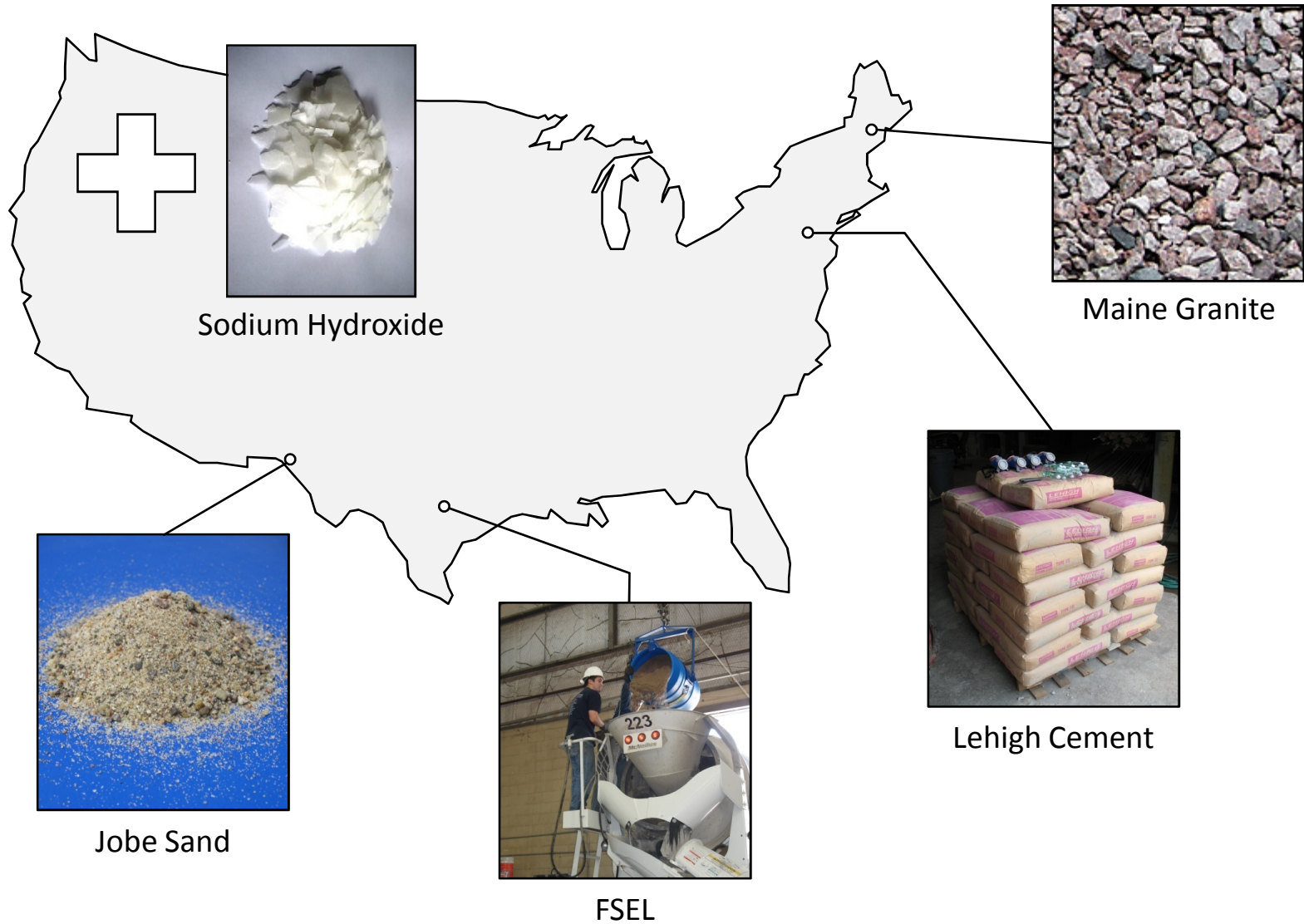
# ANCHORAGE TESTING



# PROJECT WORKFLOW



# CONCRETE MIXTURE





# BEAM FABRICATION



# CONDITIONING

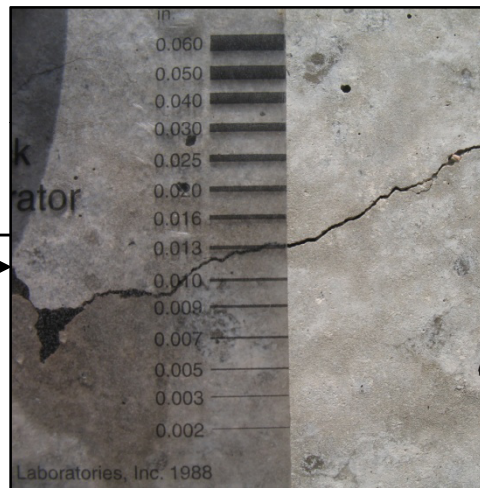


# EXPANSION MONITORING

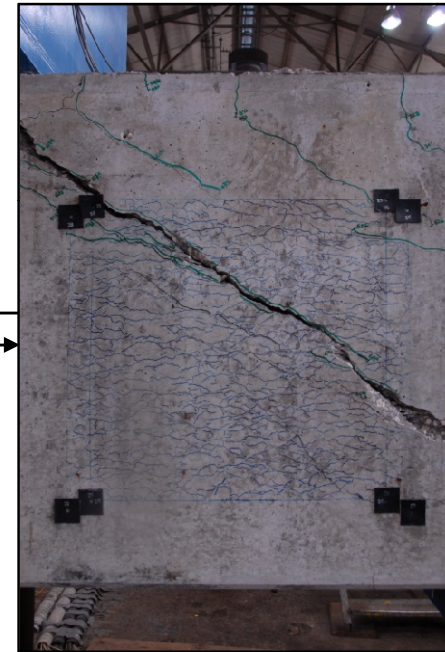
Cracking indices will be correlated to measured expansions as well as structural test results for use in Seabrook Station.



Expansions



Cracking Indices

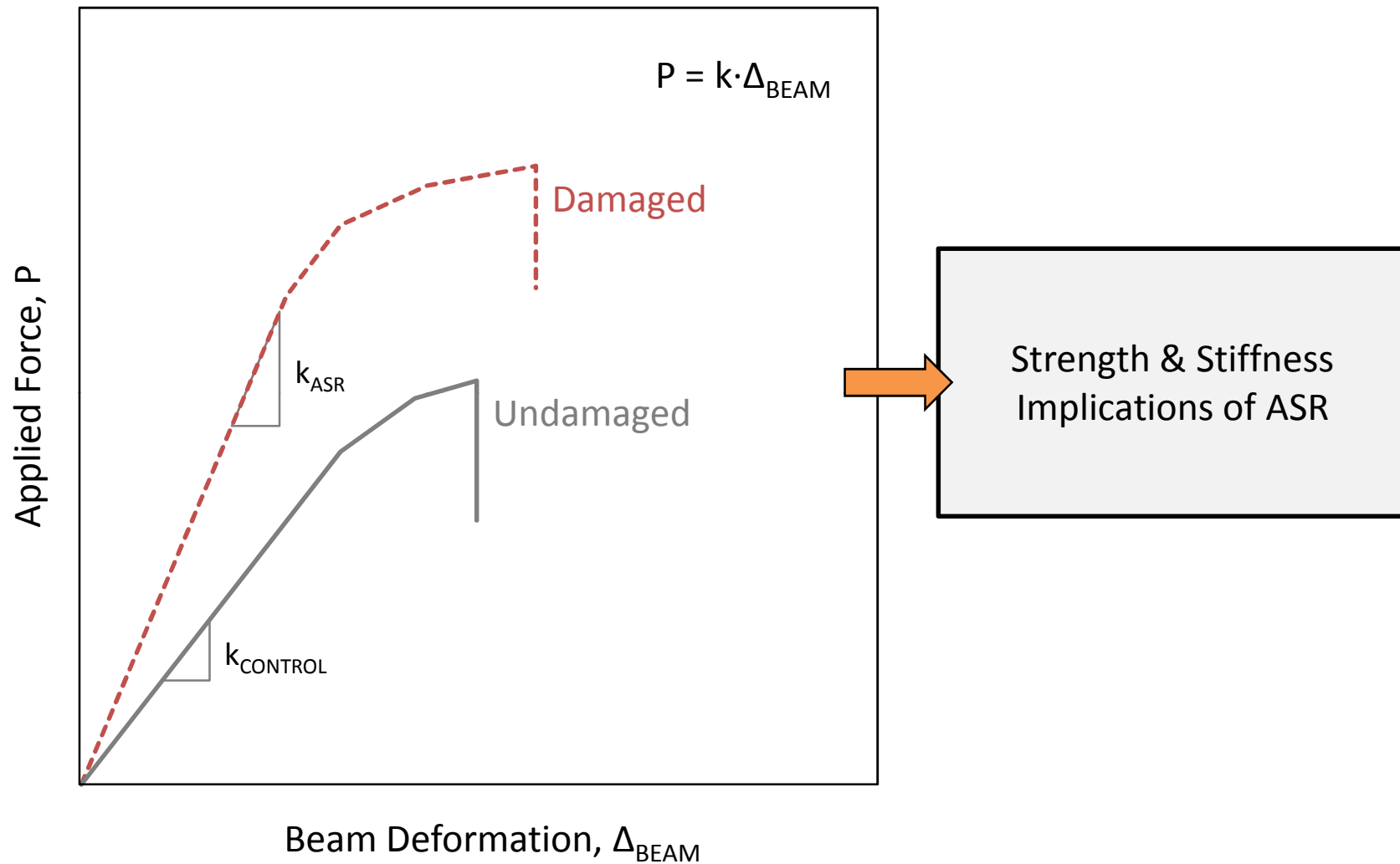


Structural  
Performance

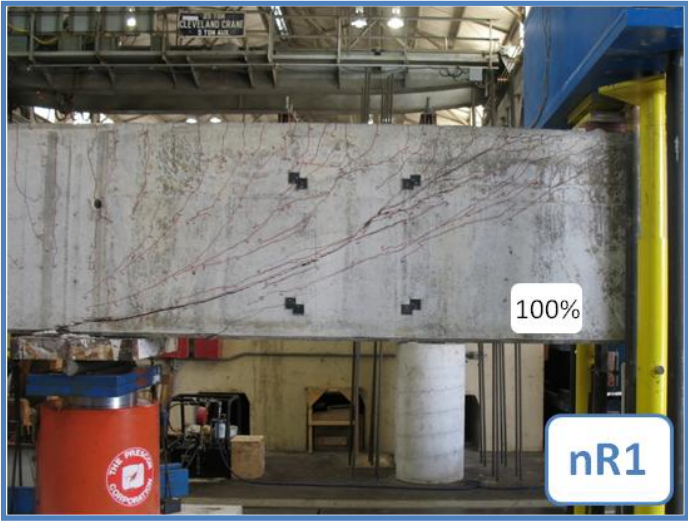
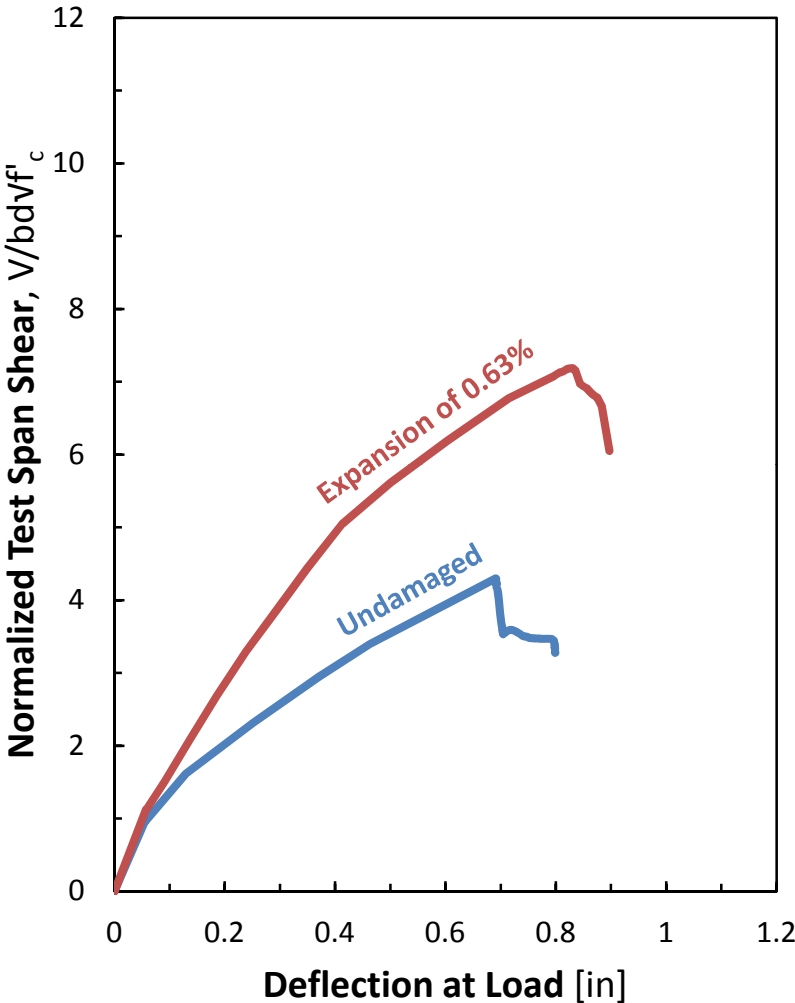
# STRUCTURAL TESTING



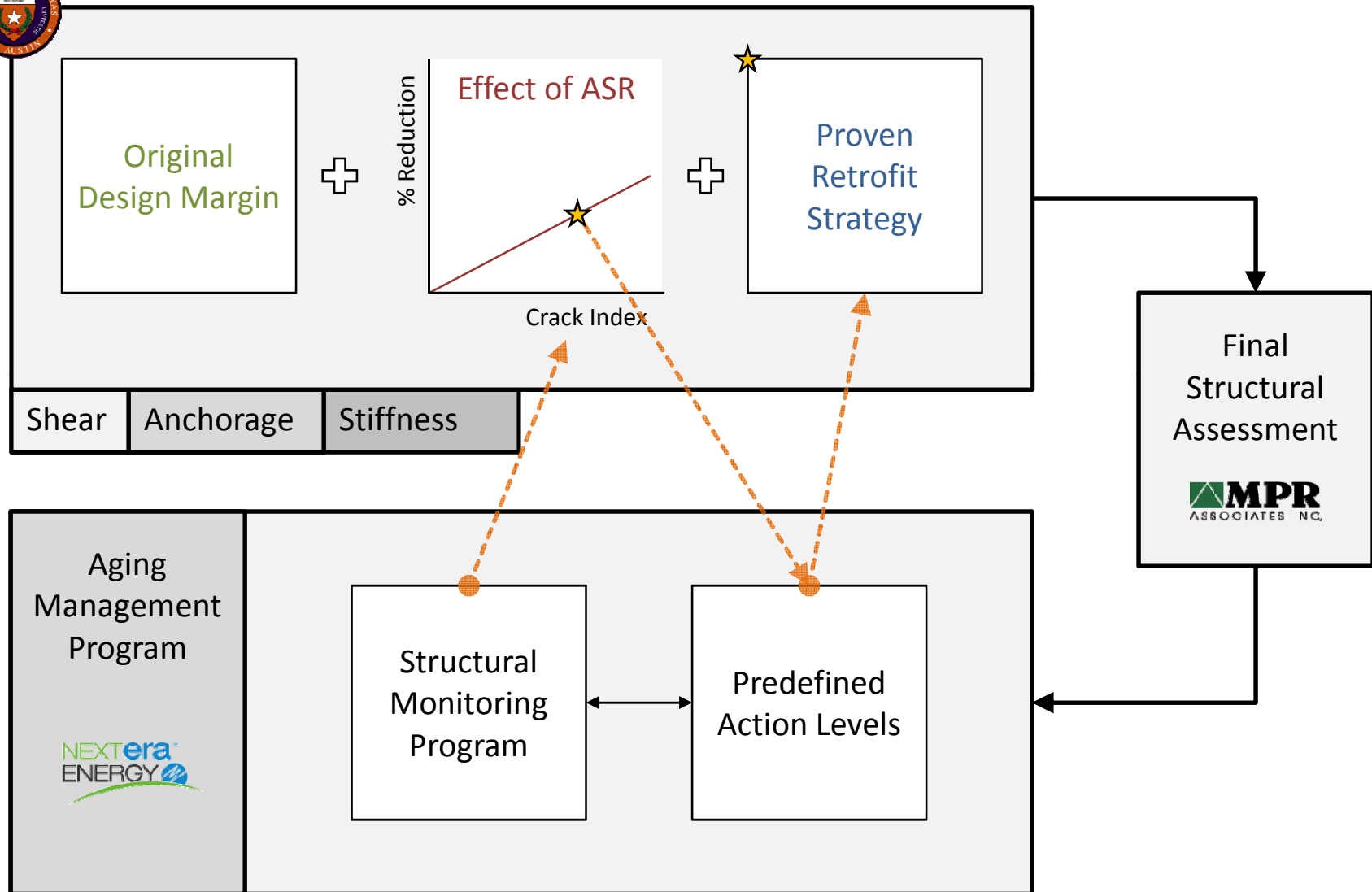
# ANALYSIS OF RESULTS



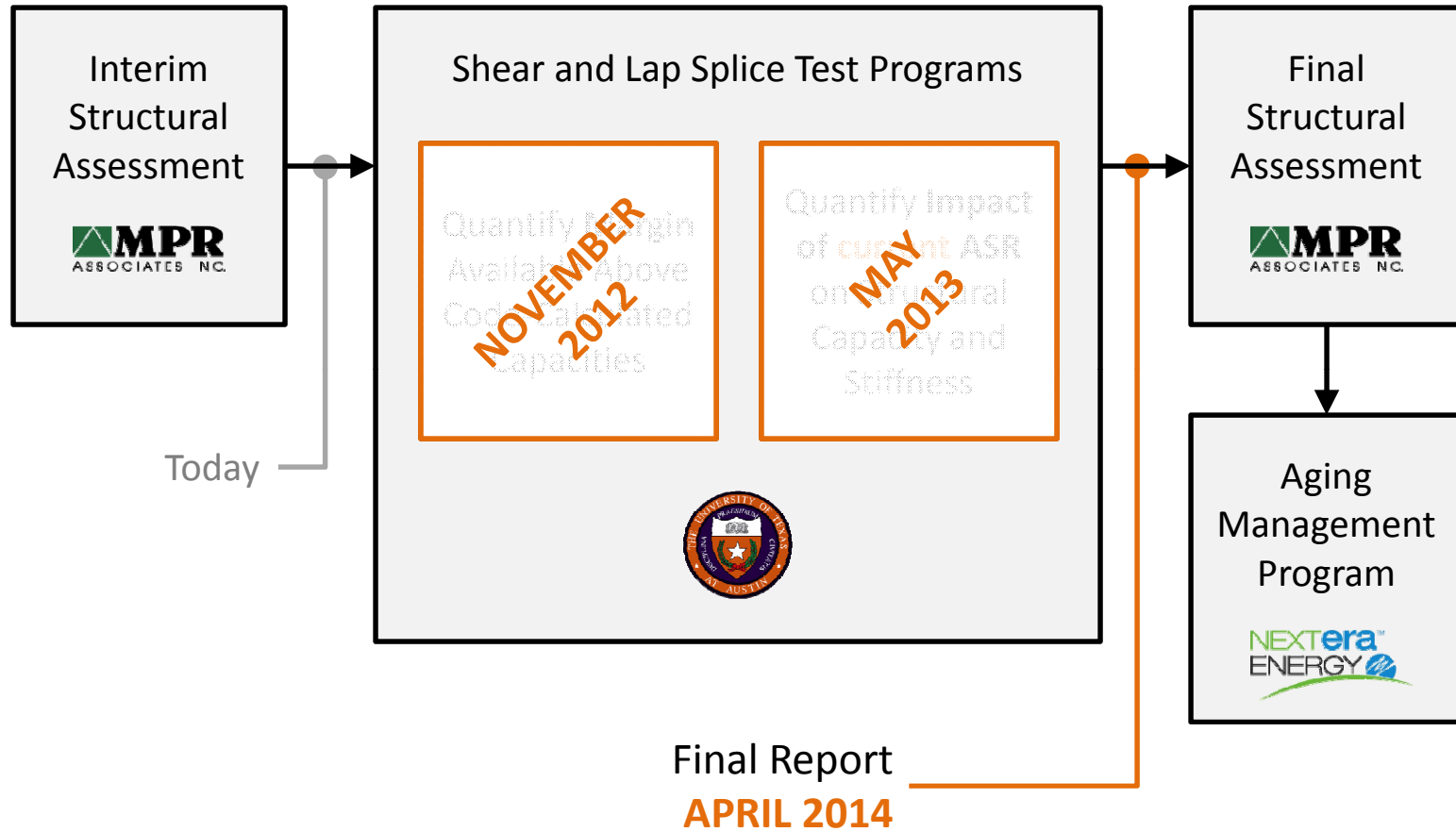
# REPRESENTATIVE RESULTS



# APPLICATION OF RESULTS



# SCHEDULE



Note: Ambient conditions may impact development of ASR in test specimens and project schedule



QUESTIONS