



# **Briefing on Low-Level Waste Program**

**April 17, 2009**

**Larry W. Camper, Director**

**Division of Waste Management and  
Environmental Protection/FSME**

# Panel 1: Presenters & Topics

- Larry Camper: Overview
- Jim Kennedy: Status of LLW Activities
- Steve Garry: Management of LLW at Operating Power Plants
- John Buckley: Reactor Decommissioning
- Dan Collins: Regional Perspective on Low-Level Waste and Sealed Sources
- Mike Ryan: Risk-informing LLW Management

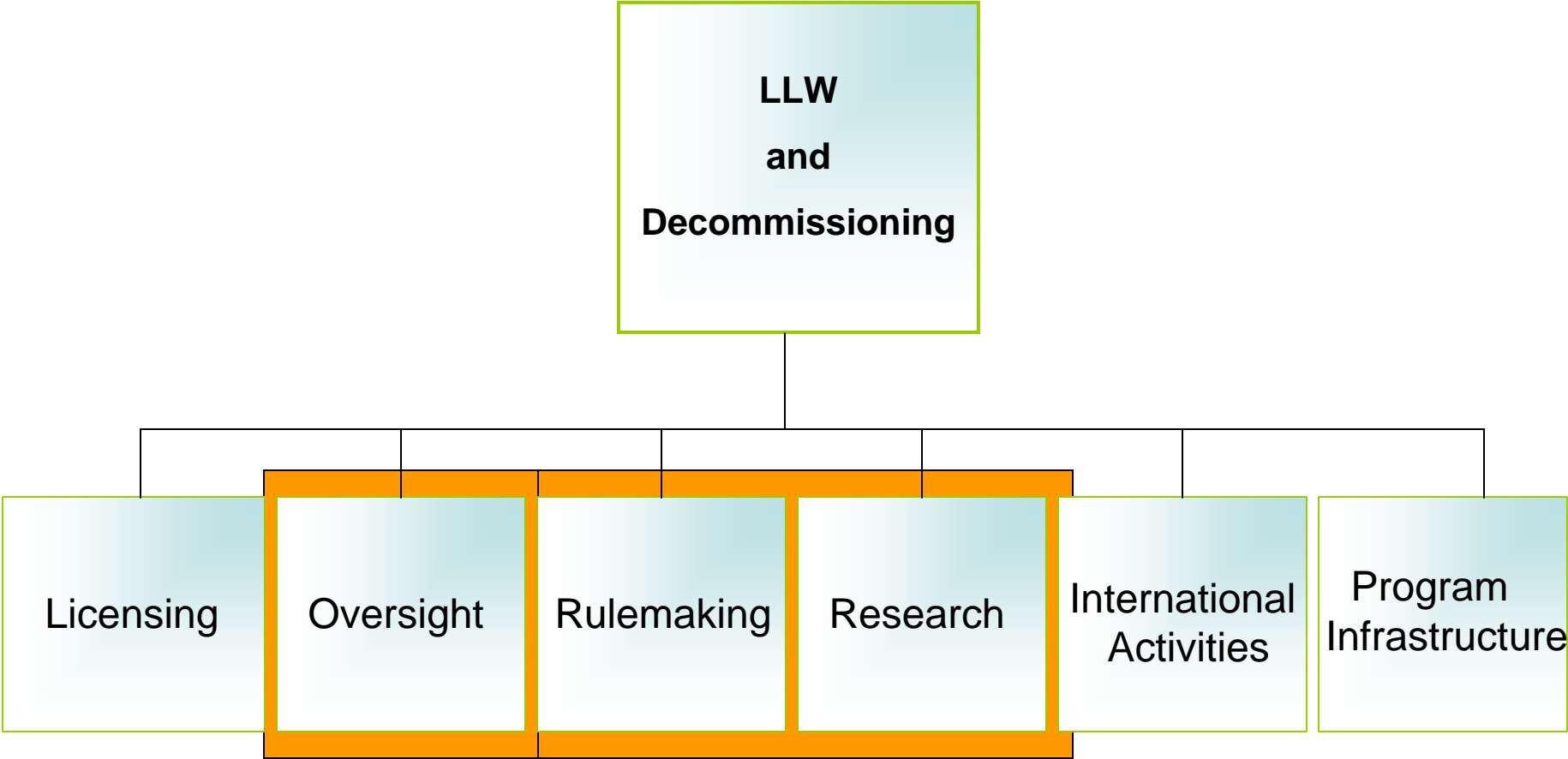
# Panel 2: Presenters & Topics

- Frank Marcinowski, DOE: National Program for DOE GTCC LLW
- Abigail Cuthbertson, NNSA: Sealed source recovery program

# Overview of NRC's LLW Program

- Key Messages
- Major Accomplishments
- LLW Strategic Assessment Rationale
- Stakeholder Outreach
- Conclusions

# Business & Product Lines



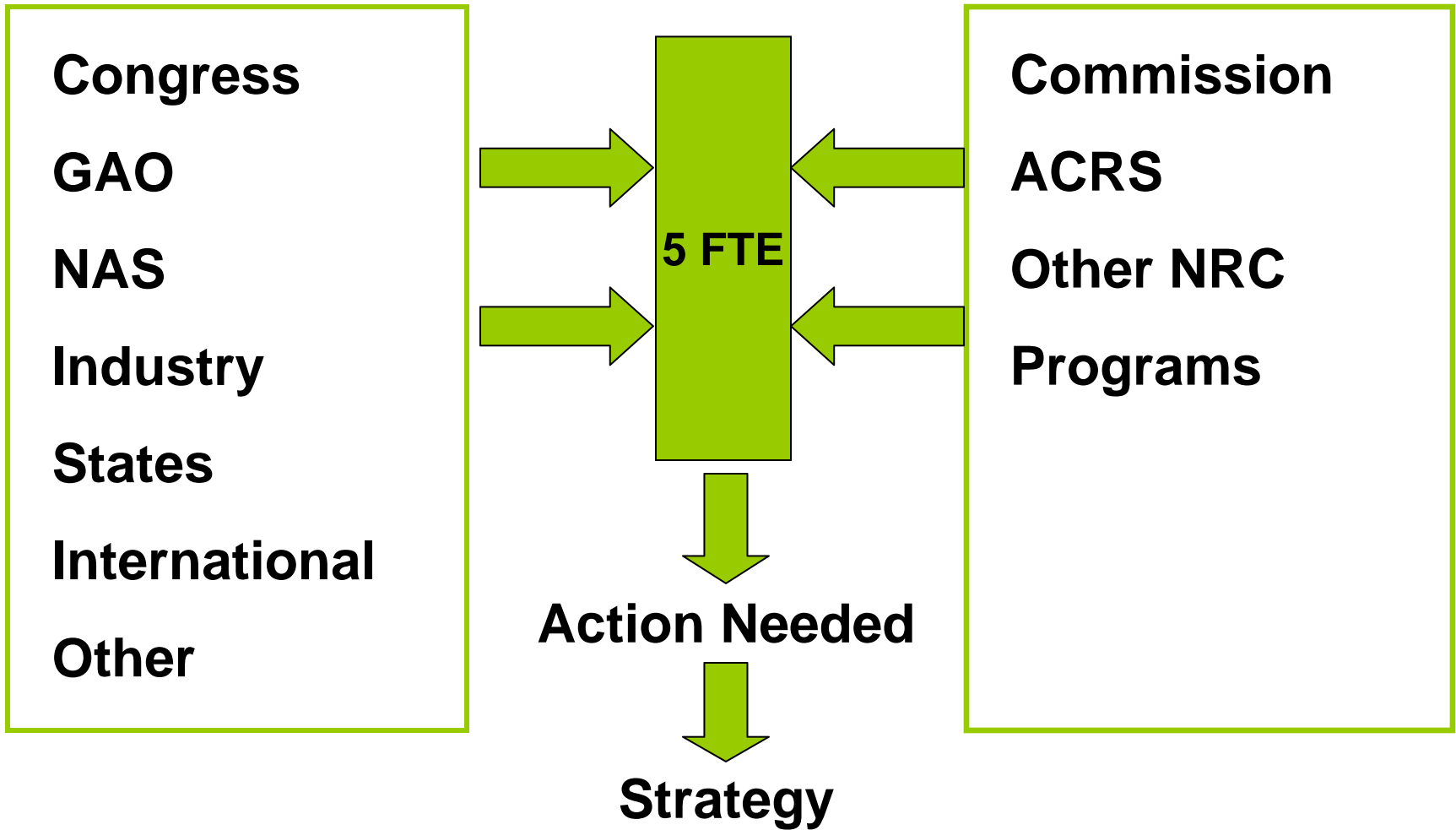
# Key Messages

- LLW program in maintenance mode
- Substantial external and internal pressures
- LLW volume reduced, safely disposed or stored

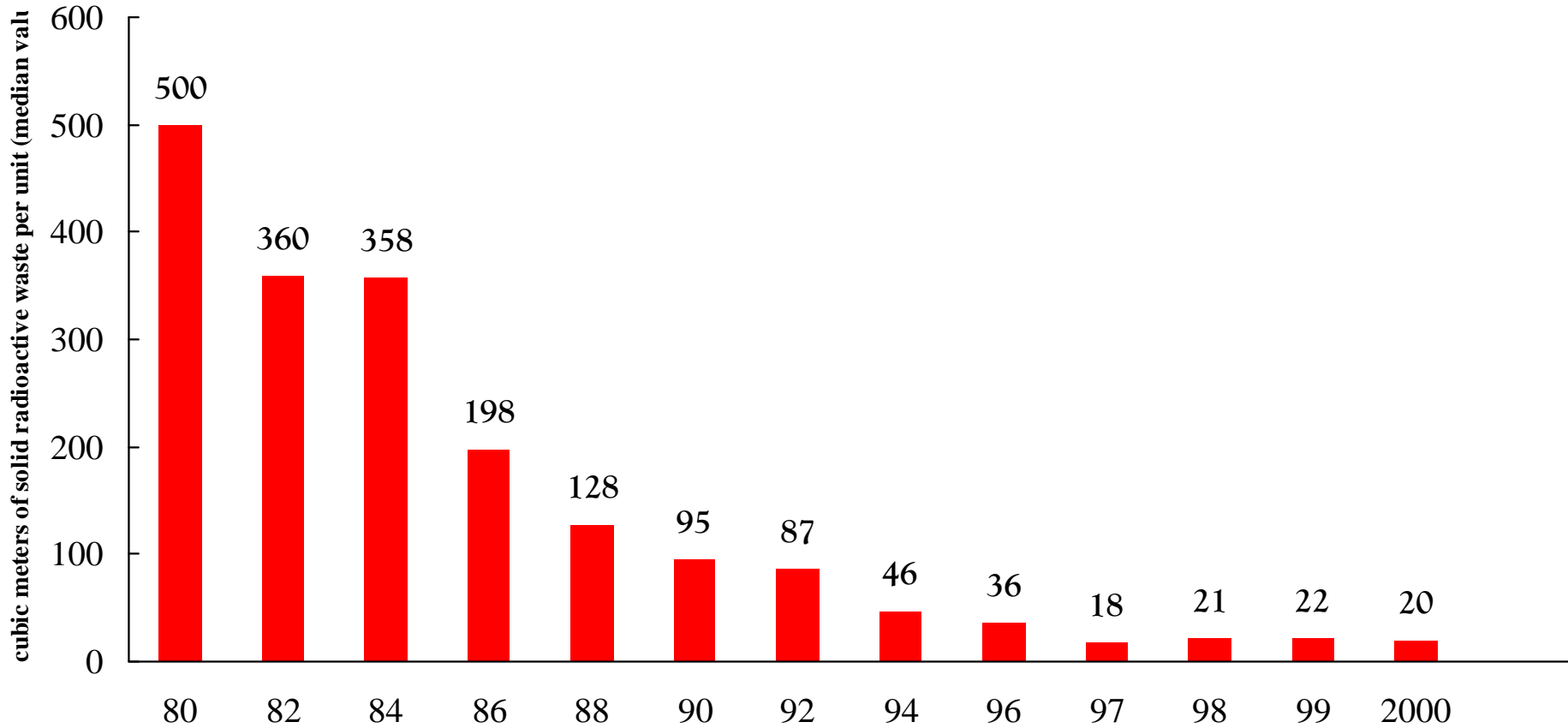
# NRC LLW Program

External

Internal



# Volume of Low-Level Solid Radioactive Waste (PWRs)



Source: WANO 2000 Performance Indicators and NEI



# Key Messages (continued)

- Adequate disposal capacity but some lack of disposal access
- No disposal pathway for GTCC waste at present
- Waste classification could be more risk-informed and performance oriented

# Major Accomplishments

- Strategic Assessment
- RIS for Fuel/Materials Interim Storage
- DU Analysis for SECY 08-0147
- Modified inspection procedures
- WCS Exemption Review

# LLW Strategic Assessment

- Rationale: respond to new pressures; prioritize work
- Rigorous analysis of 20 issues
- Seven high priority tasks identified
- Meeting Strategic Assessment plan and schedule

# Stakeholder Outreach

- LLW Strategic Assessment
- Agreement States
- Public meetings with NEI/EPRI
- Numerous other stakeholder interactions

# Conclusions

- Industry innovations may pose policy issues
- Commission LLW rulemakings
- Anticipating or reacting to external challenges