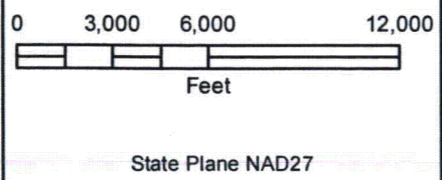


NOTES:
 Base map information and associated data provided by Wyoming Geographic Information Science Center and the USGS. Site data provided by Cameco. Data interpretation by AQUI-VER, INC.

Legend

- North
- Drawdown Contour (Ft.)
- Domestic / Stock Wells: Sand Interval
 - Domestic/Stock G/H
 - Stock C/F/G/H
 - Stock F/G/H
 - Stock G/H
 - Misc G/H
- Permit Boundary
- Mine Unit Boundary
- Drainage



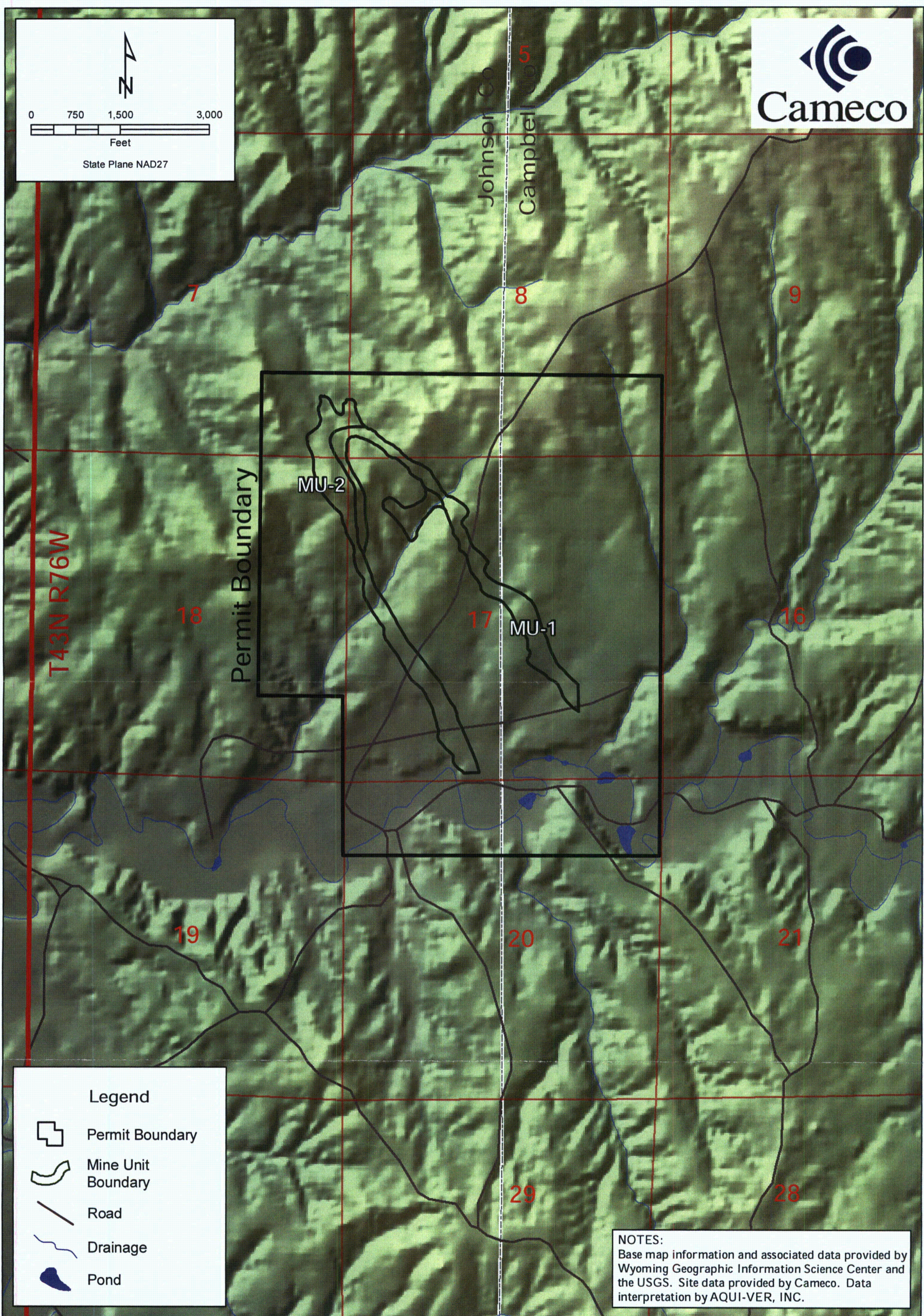
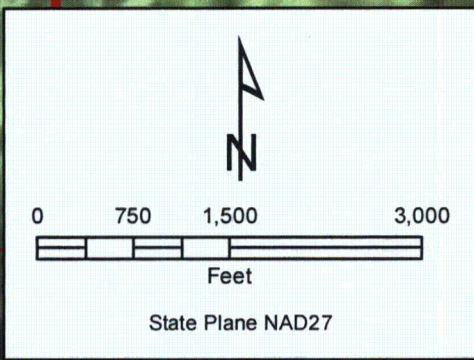
PROJECT 40100542
 DATE: 3/15/11
 DRAWN BY: CLIN
 REVIEWED BY:
 Y:\Clients\indep\40100542\GRAPHICS\GIS\MXD_figures\5-6-NORTHBUTTE_DRAWDOWN_GH-SAND.mxd



NORTH BUTTE DRAWDOWN IMPACT - G/H-SAND DEVELOPMENT YEAR 8
 CAMECO RESOURCES NORTH BUTTE FACILITY
 CAMPBELL COUNTY - WYOMING

FIGURE: 5-6

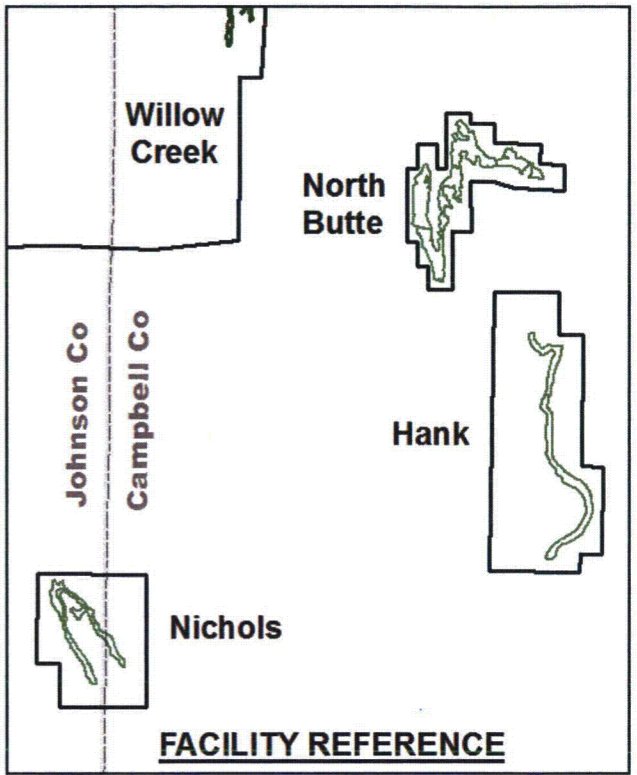
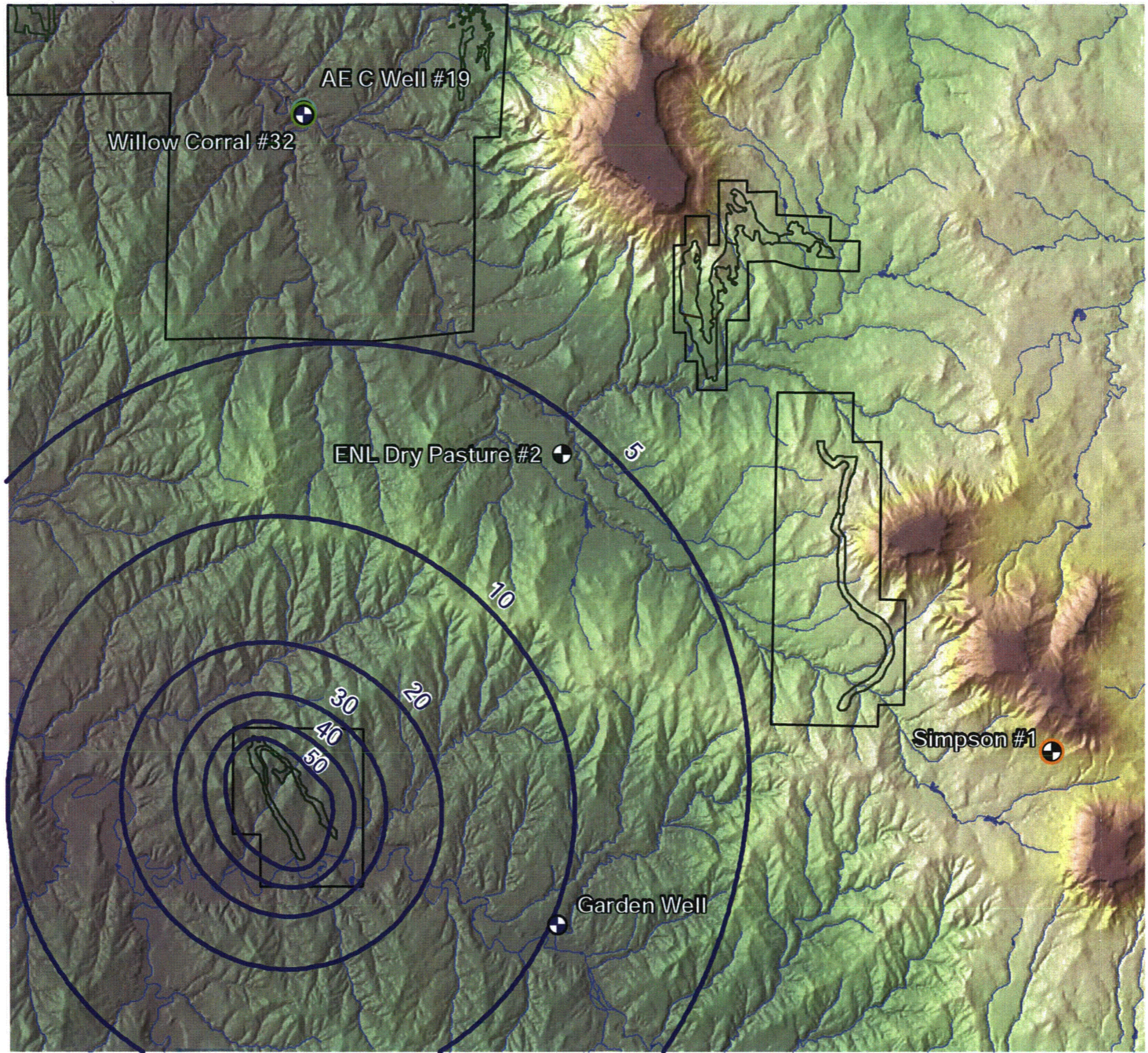
AQUI-VER, INC.
 Hydrogeology, Water Resources & Data Services



Legend

- Permit Boundary
- Mine Unit Boundary
- Road
- Drainage
- Pond

NOTES:
 Base map information and associated data provided by Wyoming Geographic Information Science Center and the USGS. Site data provided by Cameco. Data interpretation by AQUI-VER, INC.

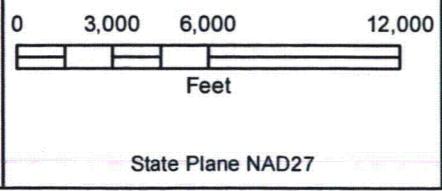


Legend

- Drawdown Contour (Ft.)
- Domestic / Stock Wells: Sand Interval**
- Domestic A/B
- Domestic/Stock A
- Domestic/Stock A /Lower Wasatch
- Stock A
- Stock A/B/C
- Permit Boundary
- Mine Unit Boundary
- Drainage

NOTES:
 Base map information and associated data provided by Wyoming Geographic Information Science Center and the USGS. Site data provided by Cameco. Data interpretation by AQUI-VER, INC.

AQUI-VER, INC.
 Hydrogeology, Water Resources & Data Services

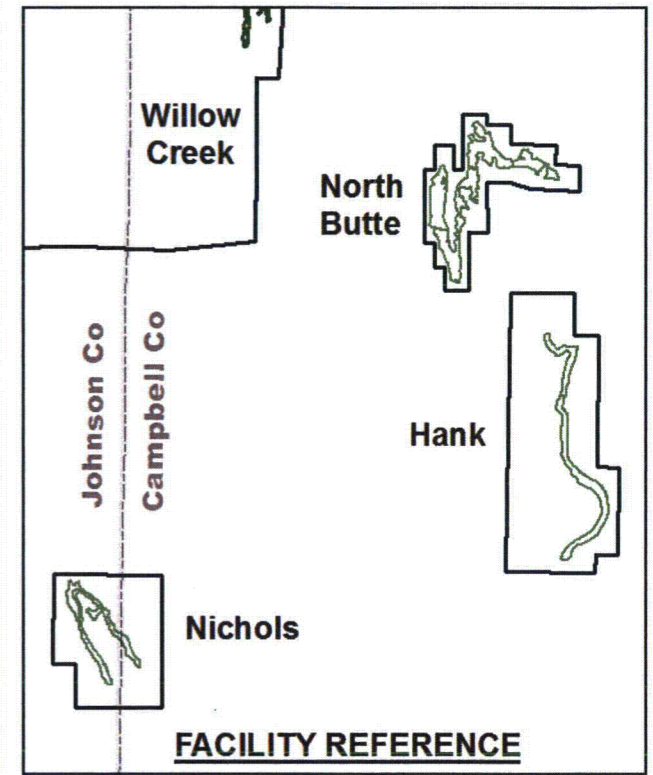
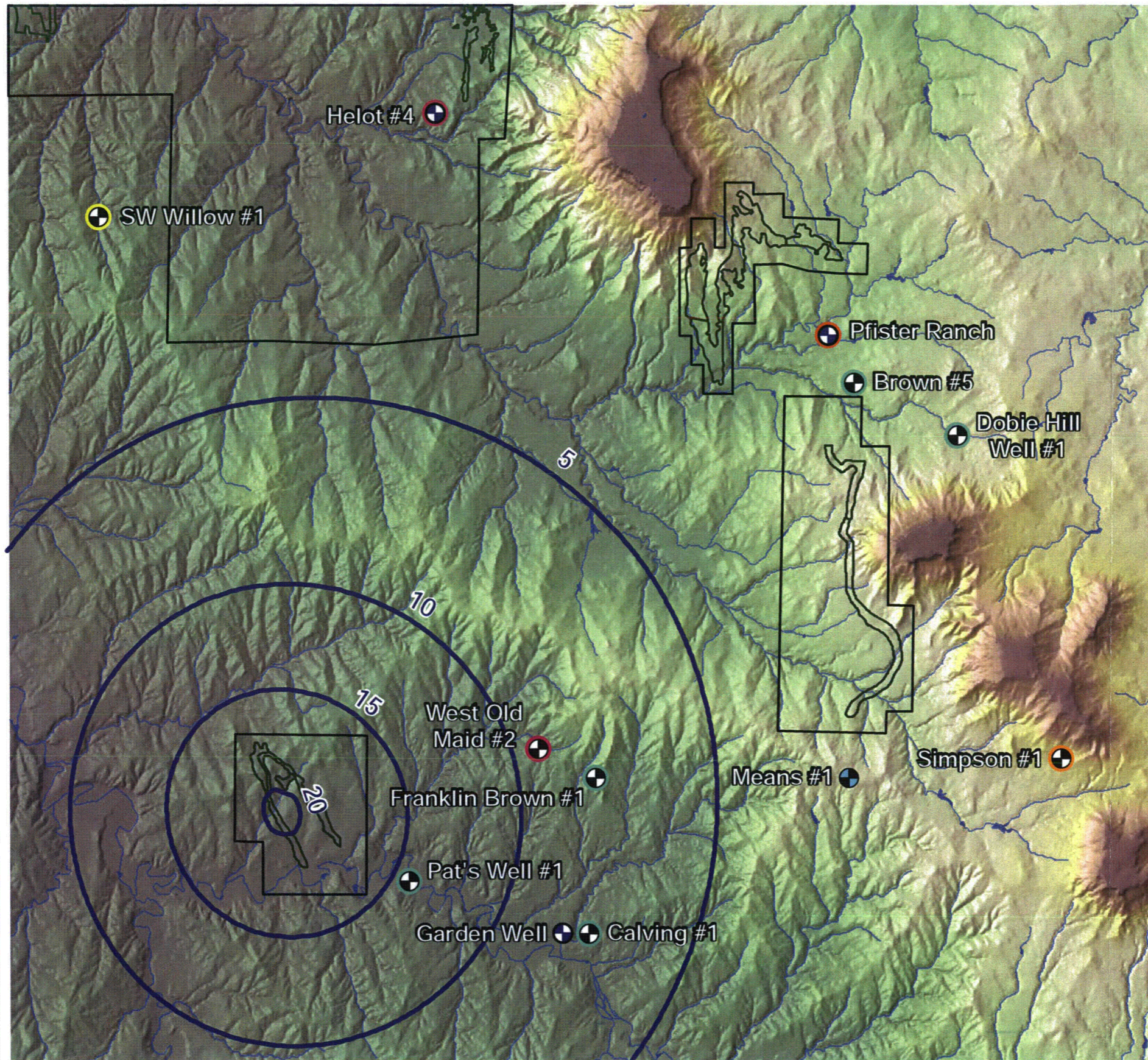


PROJECT 40100542
 DATE: 3/15/11
 DRAWN BY: CLIN
 REVIEWED BY:
 Y:\Clients\indep\40100542\GRAPHICS\GIS\MXD_figures\5-8-NICHOLS_DRAWDOWN_A-SAND.mxd



NICHOLS RANCH DRAWDOWN IMPACT - A-SAND DEVELOPMENT YEAR 5
 CAMECO RESOURCES NICHOLS RANCH FACILITY
 JOHNSON & CAMPBELL COUNTIES - WYOMING

FIGURE: 5-8

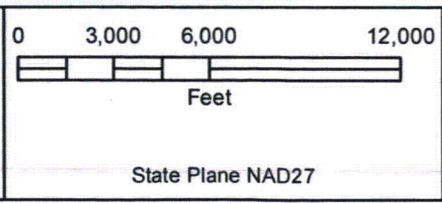


Legend

- Drawdown Contour (Ft.)
- Domestic / Stock Wells: Sand Interval**
- Domestic A/B
- Domestic B/C
- Domestic/Stock B
- Stock A/B/C
- Stock B
- Stock B/C
- Stock B/C/F
- Stock B/F
- Permit Boundary
- Mine Unit Boundary
- Drainage

NOTES:
 Base map information and associated data provided by Wyoming Geographic Information Science Center and the USGS. Site data provided by Cameco. Data interpretation by AQUI-VER, INC.

AQUI-VER, INC.
 Hydrogeology, Water Resources & Data Services

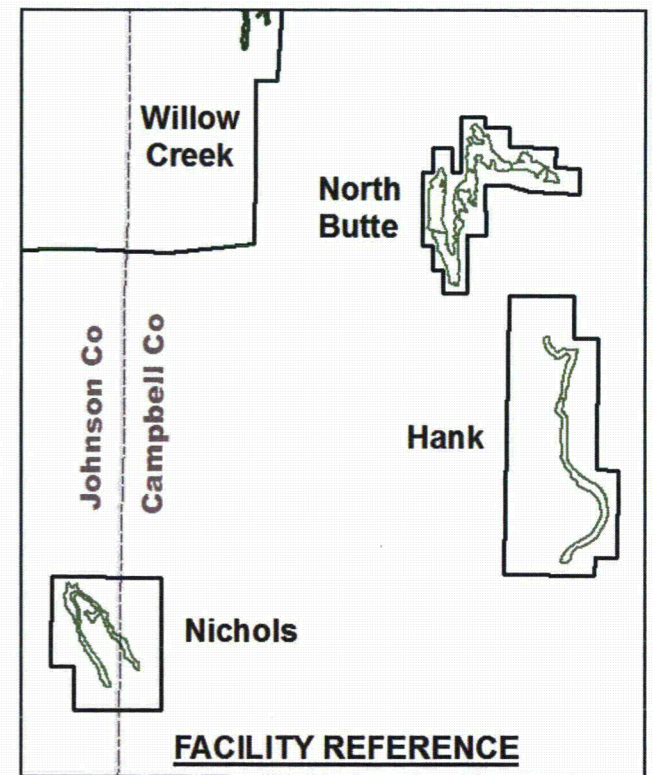
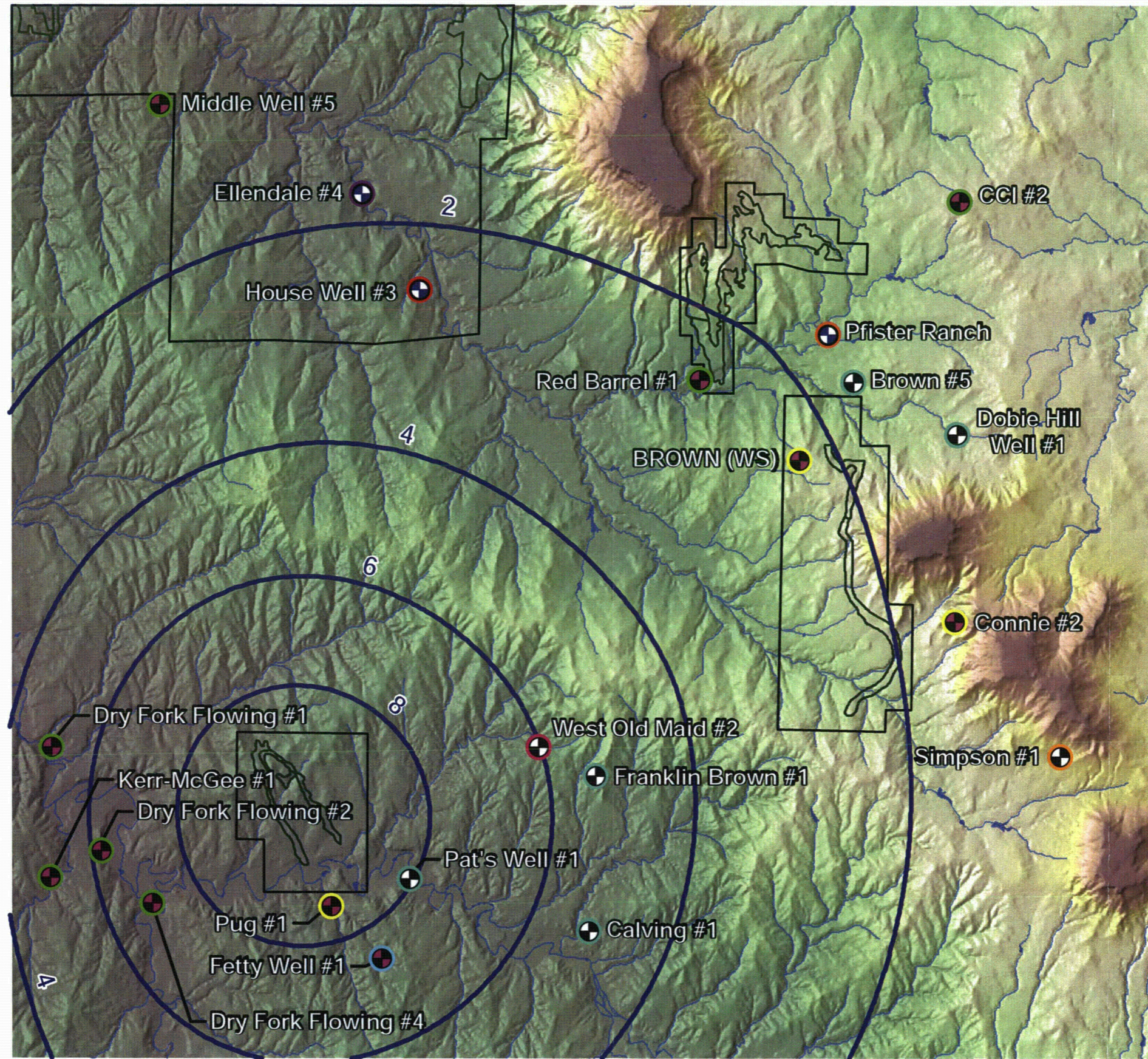


PROJECT 40100542
 DATE: 3/15/11
 DRAWN BY: CLIN
 REVIEWED BY:
 Y:\Clients\indep\40100542\GRAPHICS\GIS\MXD_figures\5-9-NICHOLS_DRAWDOWN_B-SAND.mxd



**NICHOLS RANCH DRAWDOWN IMPACT - B-SAND
 DEVELOPMENT YEAR 5**
 CAMECO RESOURCES NICHOLS RANCH FACILITY
 JOHNSON & CAMPBELL COUNTIES - WYOMING

**FIGURE:
 5-9**



NOTES:
 Base map information and associated data provided by Wyoming Geographic Information Science Center and the USGS. Site data provided by Cameco. Data interpretation by AQUI-VER, INC.

Legend

Drawdown Contour (Ft.)

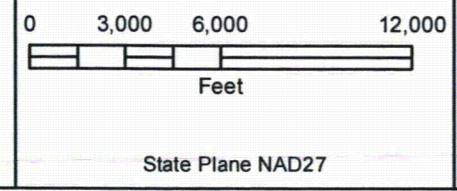
Domestic / Stock Wells: Sand Interval

- Domestic B/C
- Domestic C
- Domestic/Stock C
- Stock A/B/C
- Stock B/C
- Stock B/C/F
- Stock C
- Stock C/F
- Stock C/F/G/H

Permit Boundary

Mine Unit Boundary

Drainage



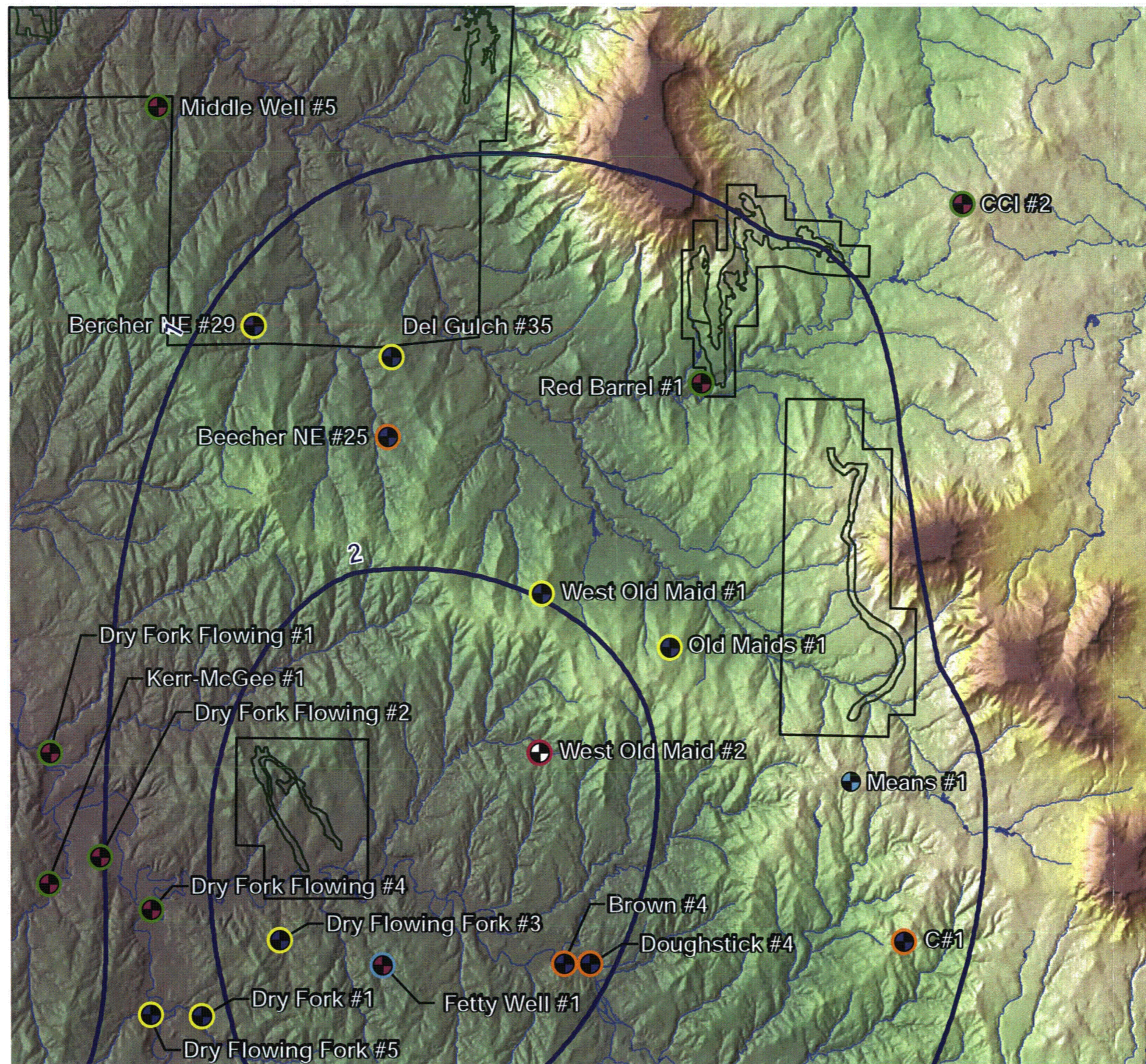
PROJECT 40100542
 DATE: 3/15/11
 DRAWN BY: CLIN
 REVIEWED BY:
 Y:\Clients\indep\40100542\GRAPHICS\GIS\MXD_figures\5-10-NICHOLS_DRAWDOWN_C-SAND.mxd



NICHOLS RANCH DRAWDOWN IMPACT - C-SAND DEVELOPMENT YEAR 5
 CAMECO RESOURCES NICHOLS RANCH FACILITY
 JOHNSON & CAMPBELL COUNTIES - WYOMING

FIGURE: 5-10

AQUI-VER, INC.
 Hydrogeology, Water Resources & Data Services



Legend

Drawdown Contour (Ft.)

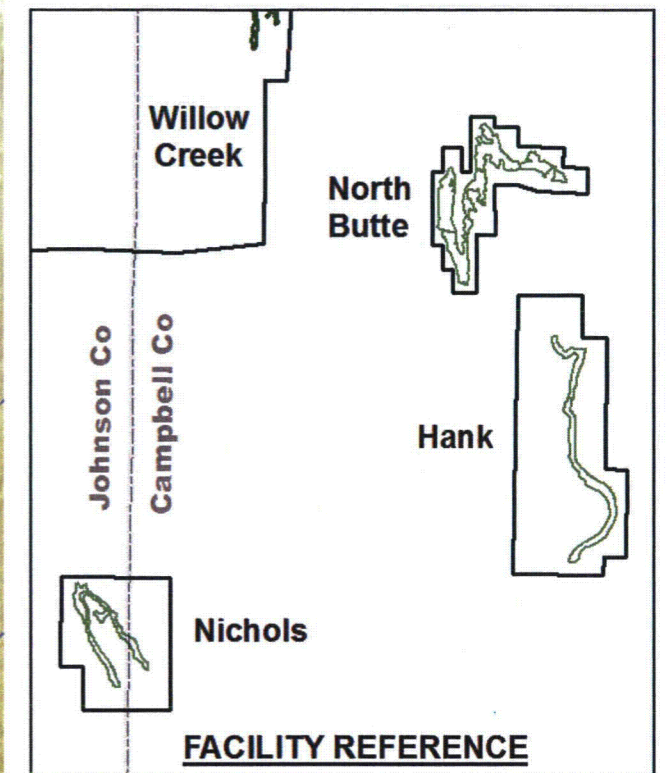
Domestic / Stock Wells: Sand Interval

- Stock B/C/F
- Stock B/F
- Stock C/F
- Stock C/F/G/H
- Stock F
- Stock F/G/H

Permit Boundary

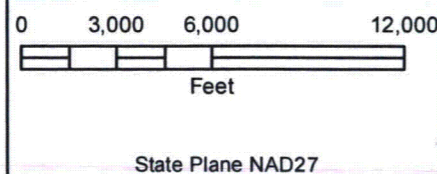
Mine Unit Boundary

Drainage



NOTES:
 Base map information and associated data provided by Wyoming Geographic Information Science Center and the USGS. Site data provided by Cameco. Data interpretation by AQUI-VER, INC.

AQUI-VER, INC.
 Hydrogeology, Water Resources & Data Services

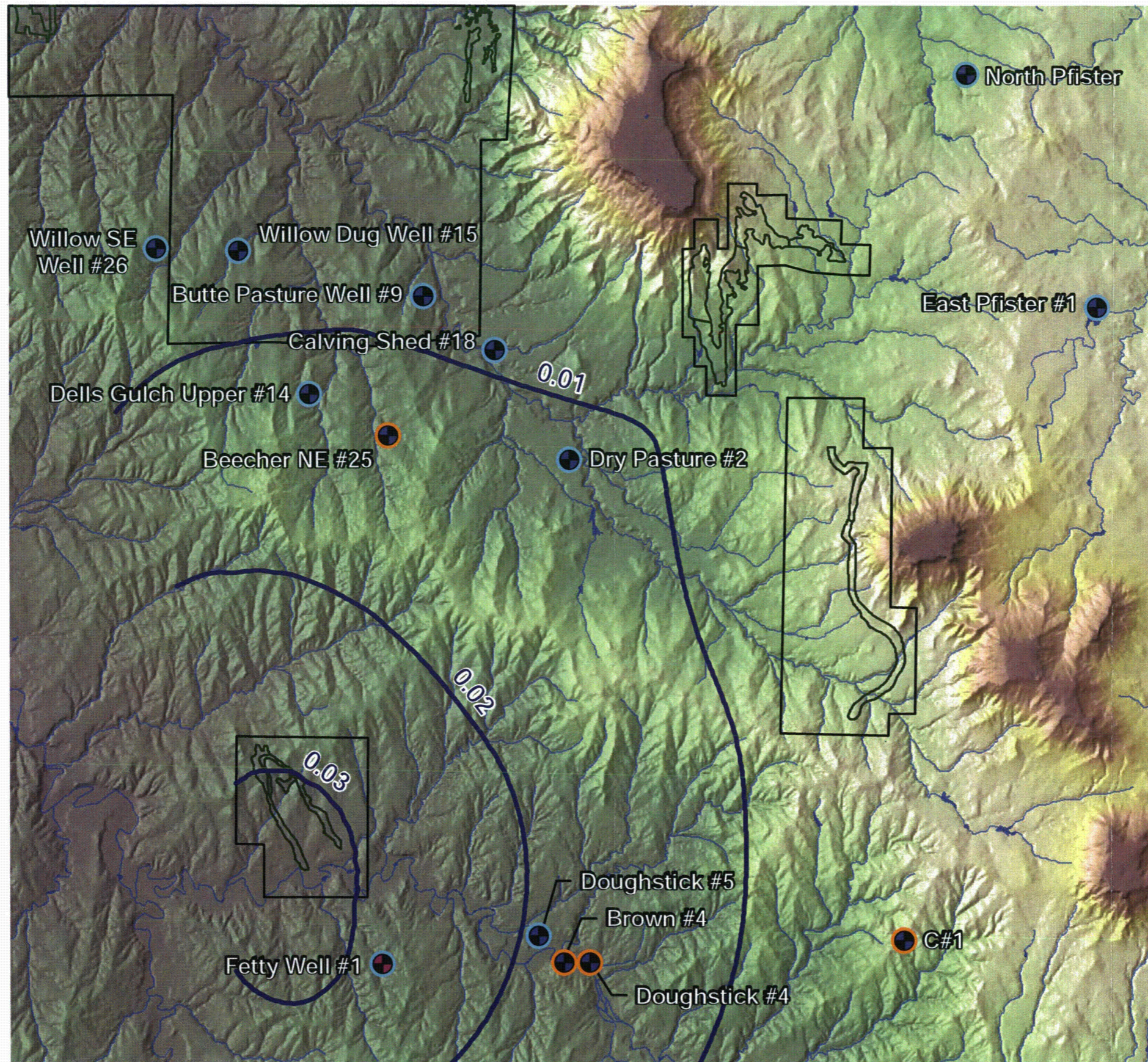


PROJECT 40100542
 DATE: 3/15/11
 DRAWN BY: CLIN
 REVIEWED BY:
 Y:\Clients\ndep\40100542\GRAPHICS\GIS\MXD_figures\5-11-NICHOLS_DRAWDOWN_F-SAND.mxd



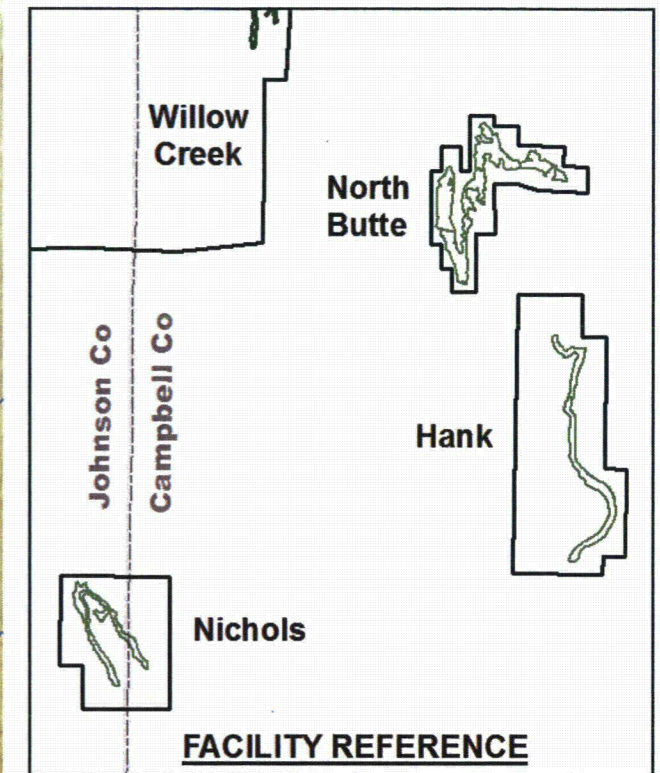
NICHOLS RANCH DRAWDOWN IMPACT - F-SAND DEVELOPMENT YEAR 5
 CAMECO RESOURCES NICHOLS RANCH FACILITY
 JOHNSON & CAMPBELL COUNTIES - WYOMING

**FIGURE:
 5-11**



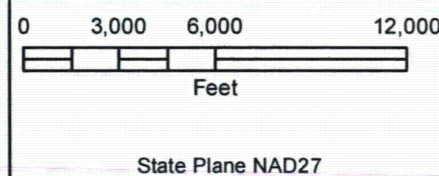
Legend

- Drawdown Contour (Ft.)
- Domestic / Stock Wells: Sand Interval**
- Domestic/Stock G/H
- Stock C/F/G/H
- Stock F/G/H
- Stock G/H
- Misc G/H
- Permit Boundary
- Mine Unit Boundary
- Drainage



NOTES:
 Base map information and associated data provided by Wyoming Geographic Information Science Center and the USGS. Site data provided by Cameco. Data interpretation by AQUI-VER, INC.

AQUI-VER, INC.
 Hydrogeology, Water Resources & Data Services

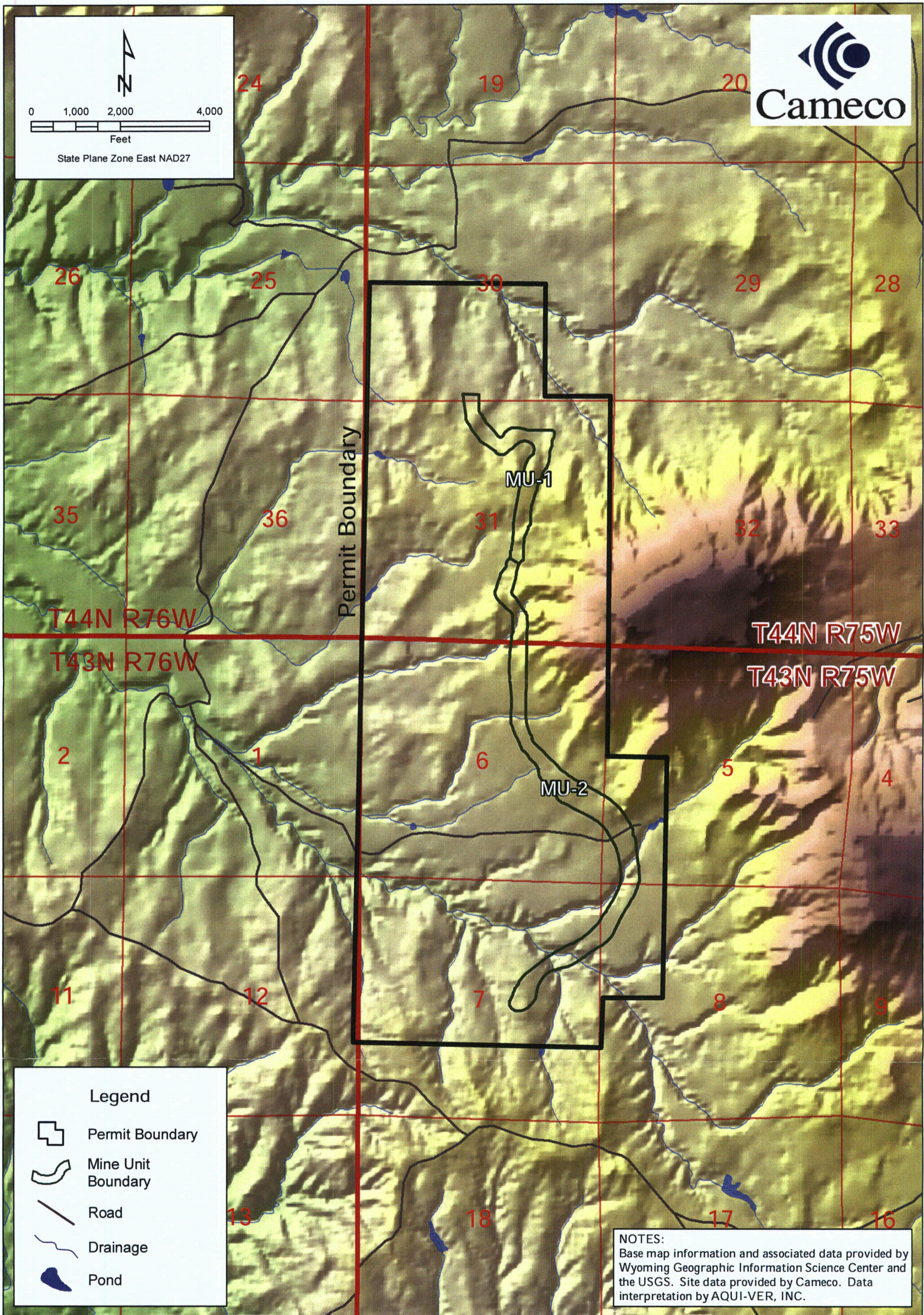
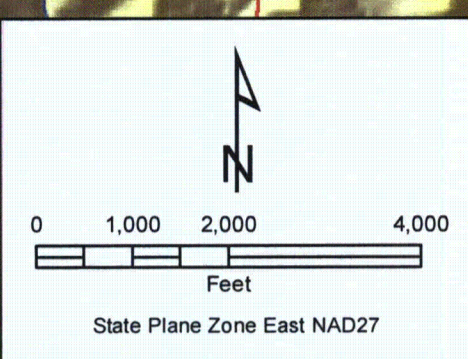


PROJECT 40100542
 DATE: 3/15/11
 DRAWN BY: CLIN
 REVIEWED BY:
 Y:\Clients\indep\40100542\GRAPHICS\GIS\MXD_figures\5-12-NICHOLS_DRAWDOWN_GH-SAND.mxd



NICHOLS RANCH DRAWDOWN IMPACT - G/H-SAND DEVELOPMENT YEAR 5
 CAMECO RESOURCES NICHOLS RANCH FACILITY
 JOHNSON & CAMPBELL COUNTIES - WYOMING

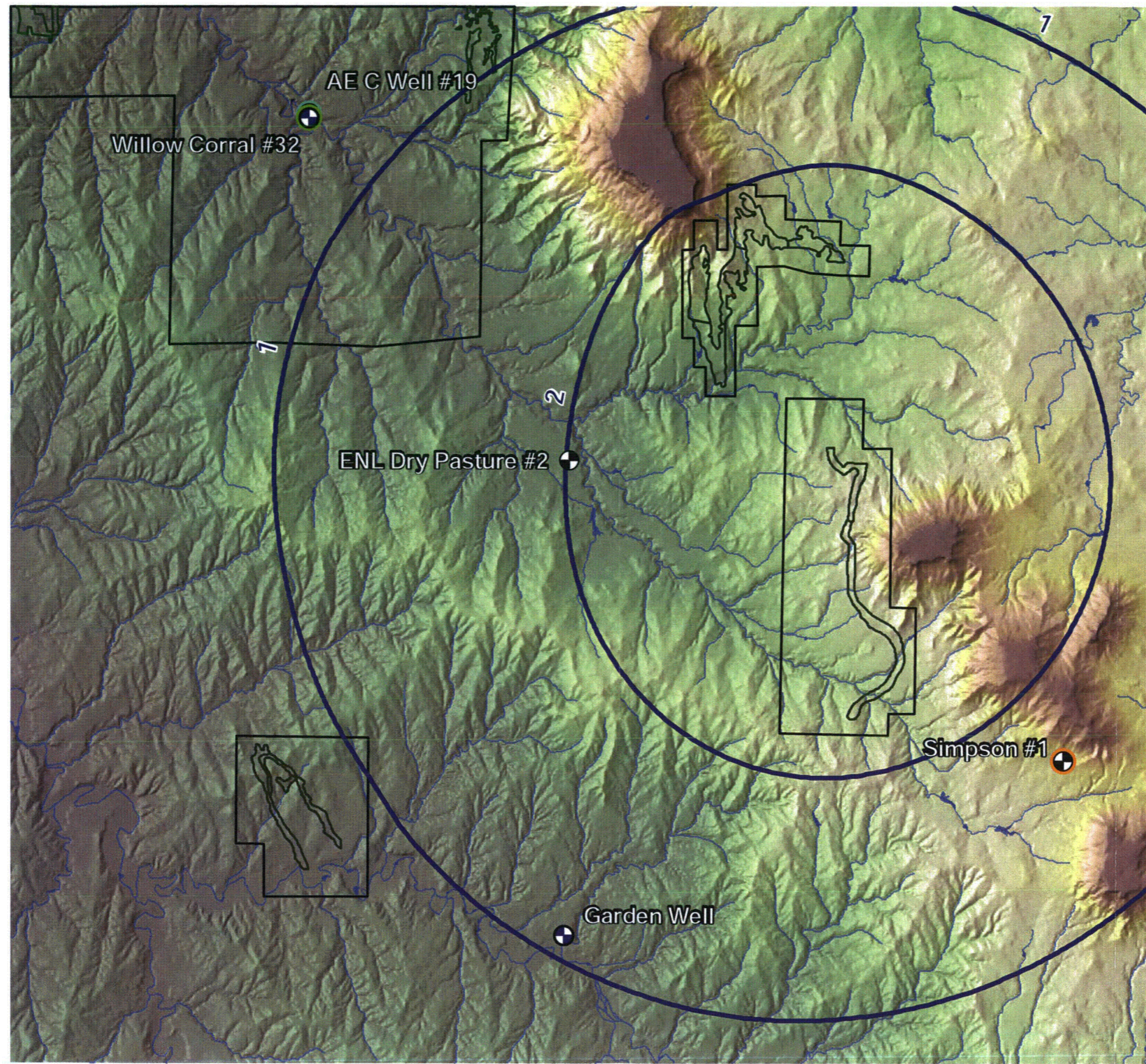
FIGURE:
5-12



Legend

- Permit Boundary
- Mine Unit Boundary
- Road
- Drainage
- Pond

NOTES:
 Base map information and associated data provided by Wyoming Geographic Information Science Center and the USGS. Site data provided by Cameco. Data interpretation by AQUI-VER, INC.



Legend

Drawdown Contour (Ft.)

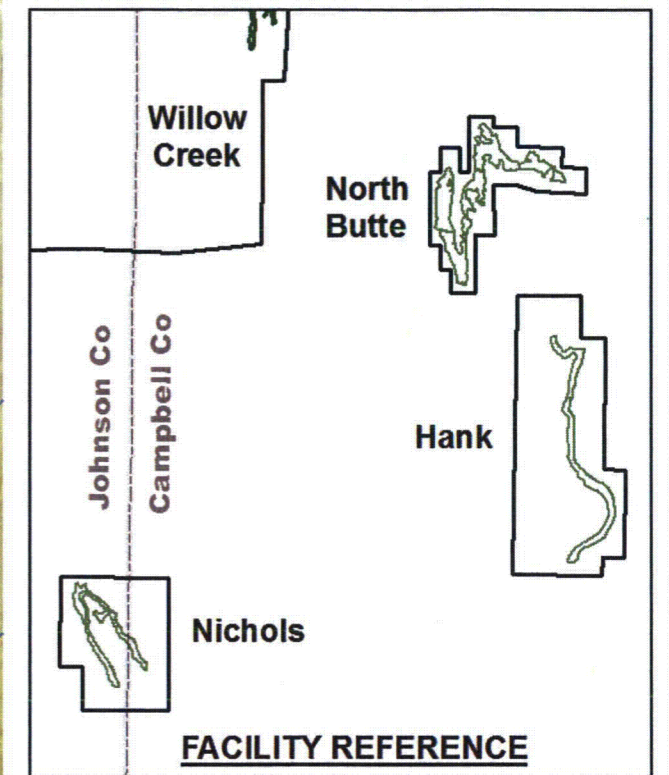
Domestic / Stock Wells: Sand Interval

- Domestic A/B
- Domestic/Stock A
- Domestic/Stock A /Lower Wasatch
- Stock A
- Stock A/B/C

Permit Boundary

Mine Unit Boundary

Drainage



NOTES:
 Base map information and associated data provided by Wyoming Geographic Information Science Center and the USGS. Site data provided by Cameco. Data interpretation by AQUI-VER, INC.

Legend

Drawdown Contour (Ft.)

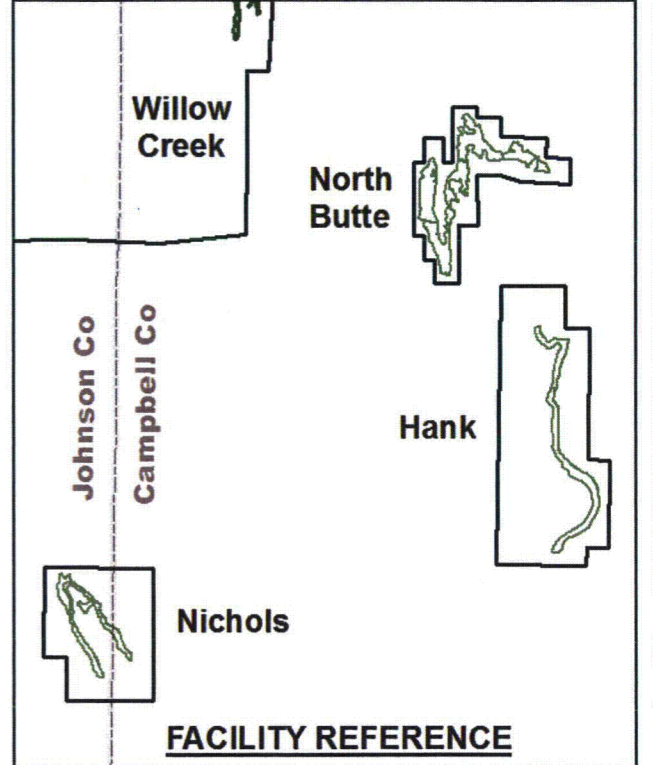
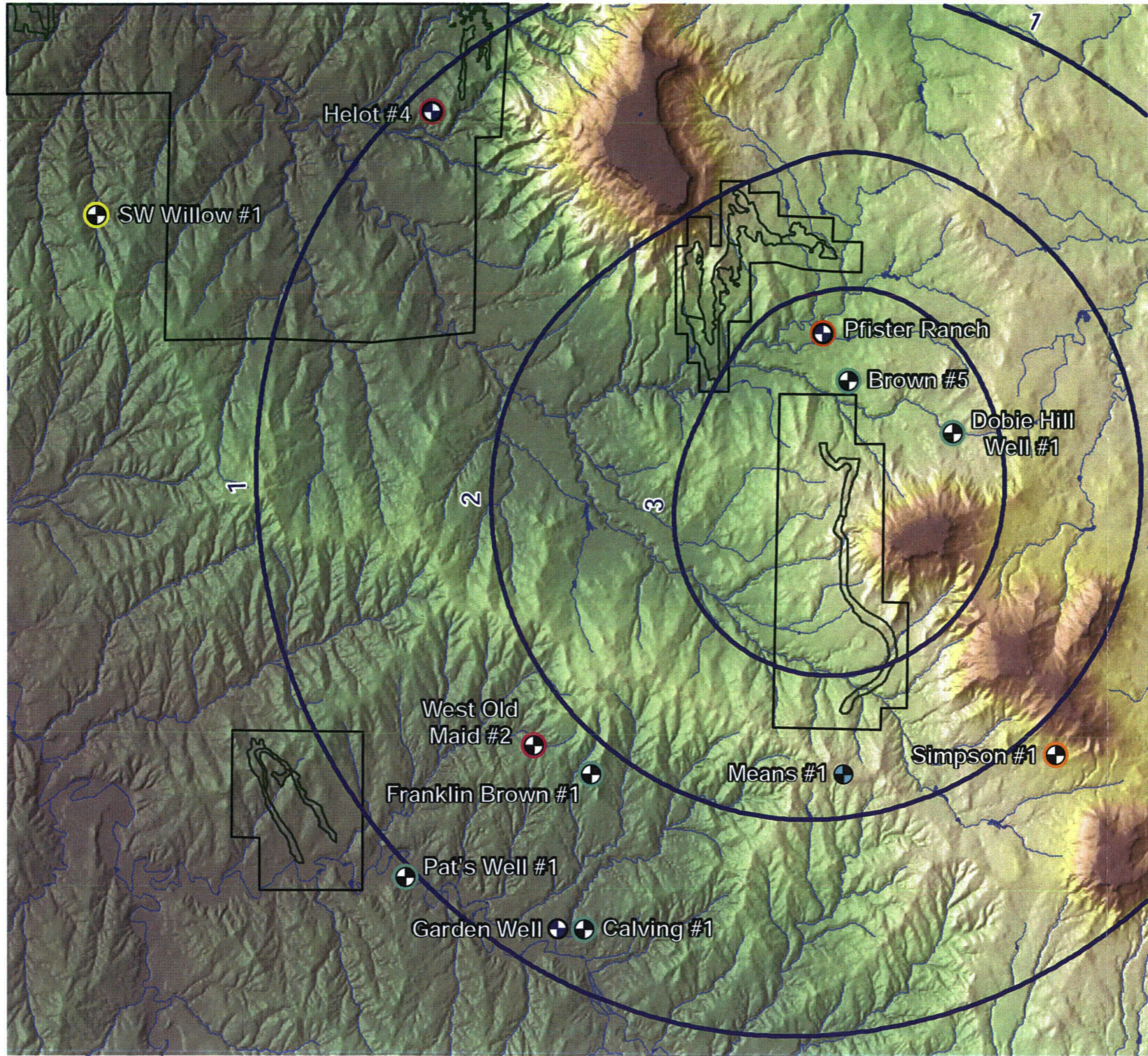
Domestic / Stock Wells: Sand Interval

- Domestic A/B
- Domestic B/C
- Domestic/Stock B
- Stock A/B/C
- Stock B
- Stock B/C
- Stock B/C/F
- Stock B/F

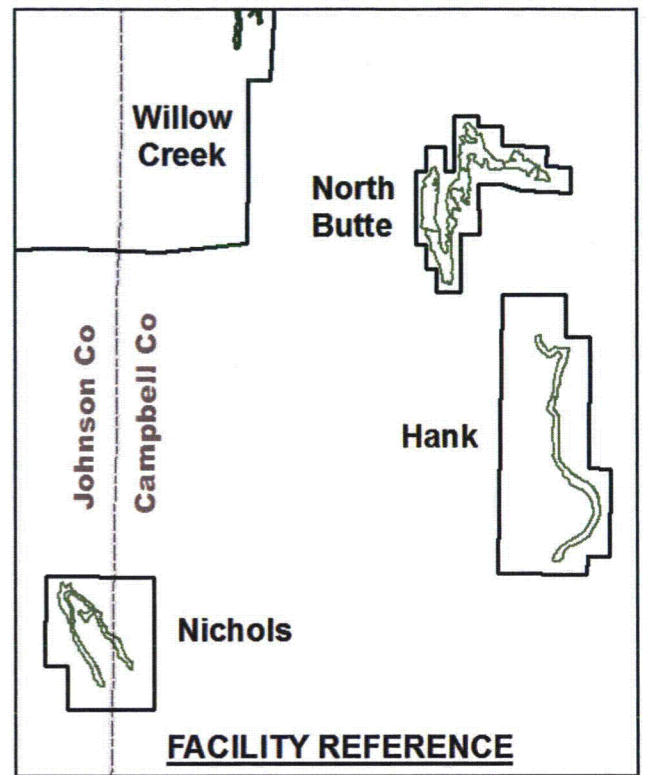
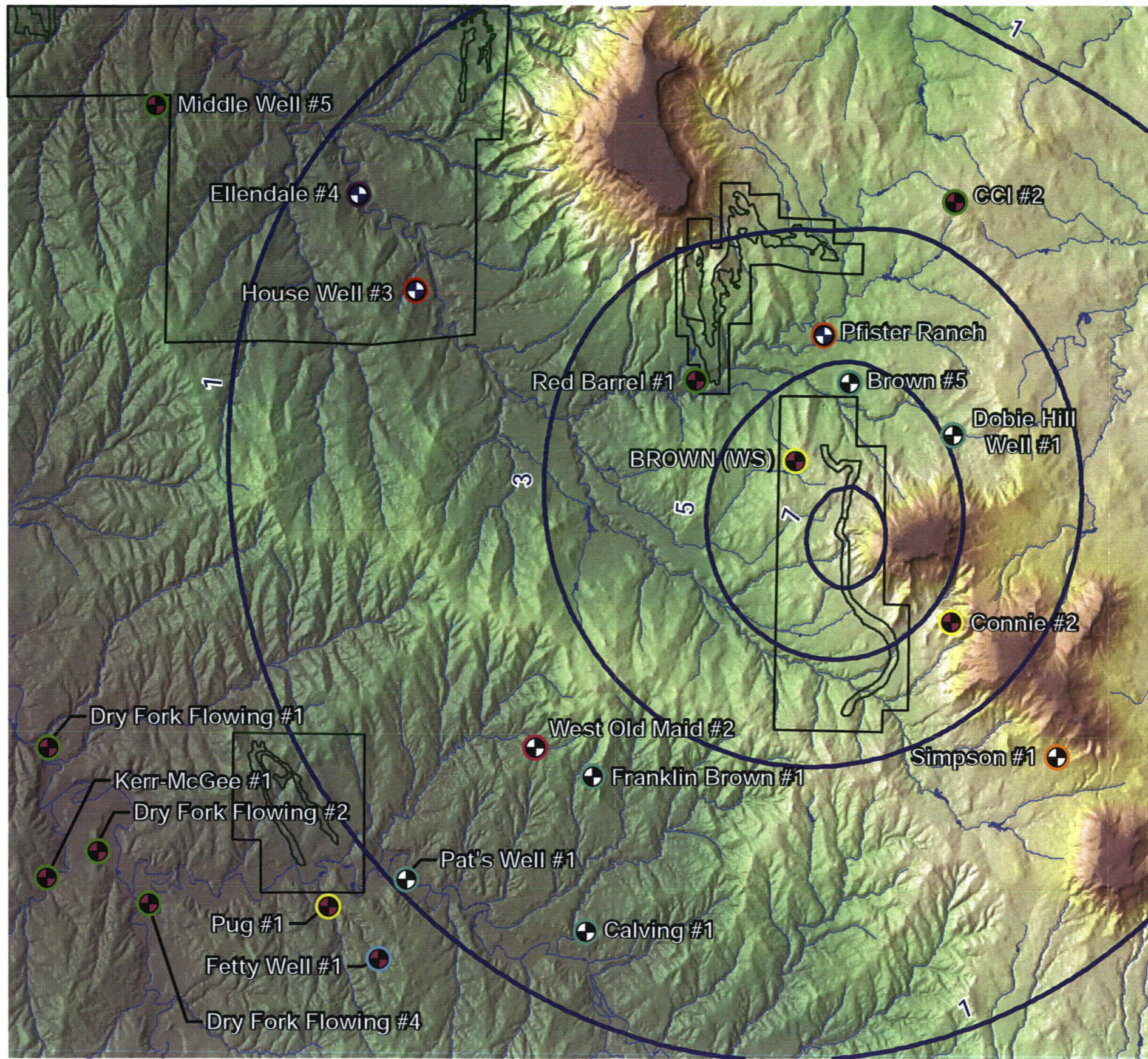
Permit Boundary

Mine Unit Boundary

Drainage



NOTES:
 Base map information and associated data provided by Wyoming Geographic Information Science Center and the USGS. Site data provided by Cameco. Data interpretation by AQUI-VER, INC.



NOTES:
 Base map information and associated data provided by Wyoming Geographic Information Science Center and the USGS. Site data provided by Cameco. Data interpretation by AQUI-VER, INC.

Legend

Drawdown Contour (Ft.)

Domestic / Stock Wells: Sand Interval

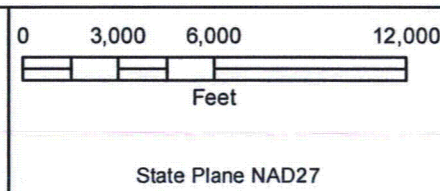
- Domestic B/C
- Domestic C
- Domestic/Stock C
- Stock A/B/C
- Stock B/C
- Stock B/C/F
- Stock C
- Stock C/F
- Stock C/F/G/H

Permit Boundary

Mine Unit Boundary

Drainage

AQUI-VER, INC.
 Hydrogeology, Water Resources & Data Services

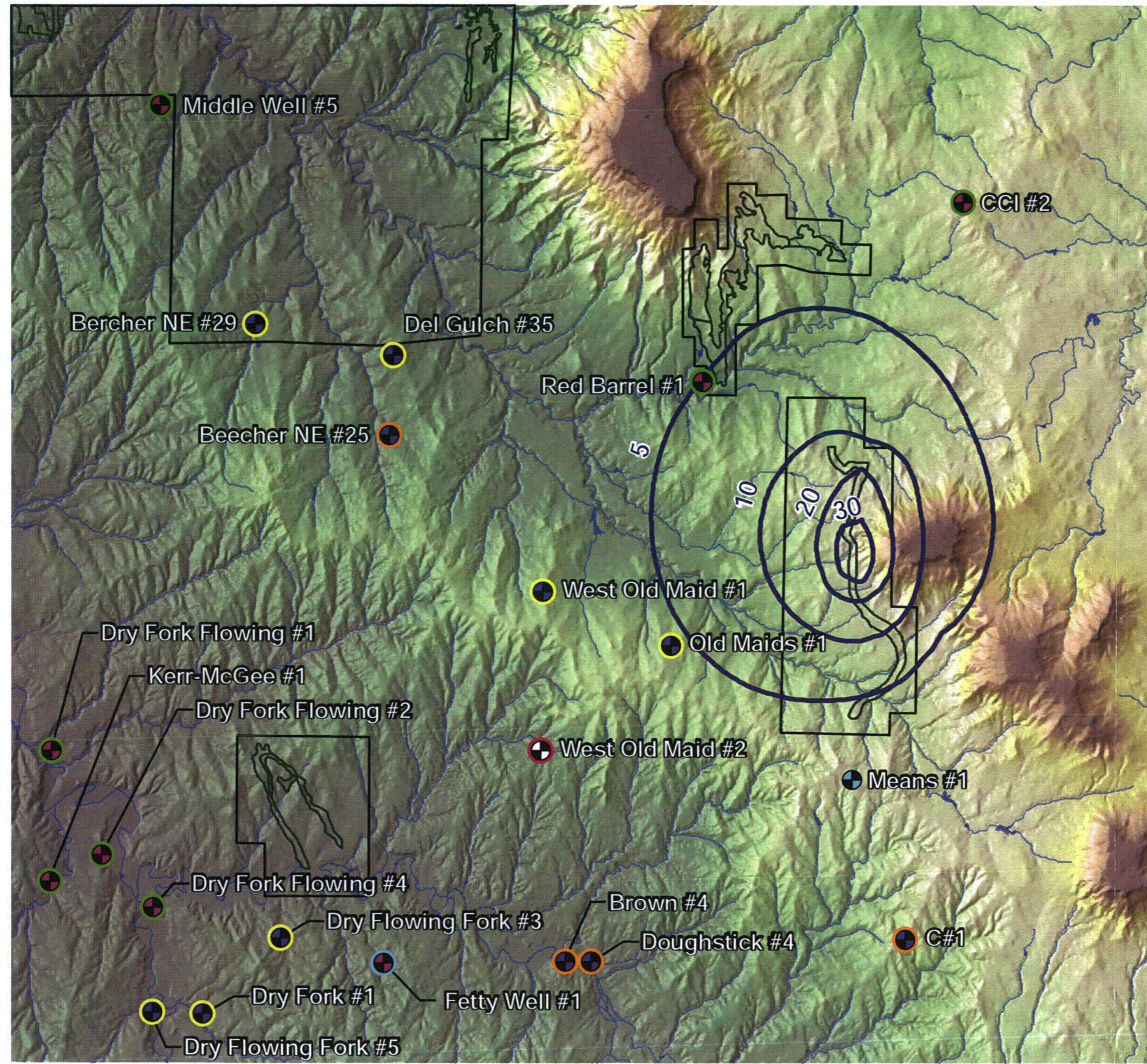


PROJECT 40100542
 DATE: 3/15/11
 DRAWN BY: CLIN
 REVIEWED BY:
 Y:\Clients\indp\40100542\GRAPHICS\GIS\MXD_figures\5-16-HANK_DRAWDOWN_C-SAND.mxd



HANK FACILITY DRAWDOWN IMPACT - C-SAND DEVELOPMENT YEAR 8
 CAMECO RESOURCES HANK FACILITY
 CAMPBELL COUNTY - WYOMING

**FIGURE:
 5-16**



N
↑
N

Legend

Drawdown Contour (Ft.)

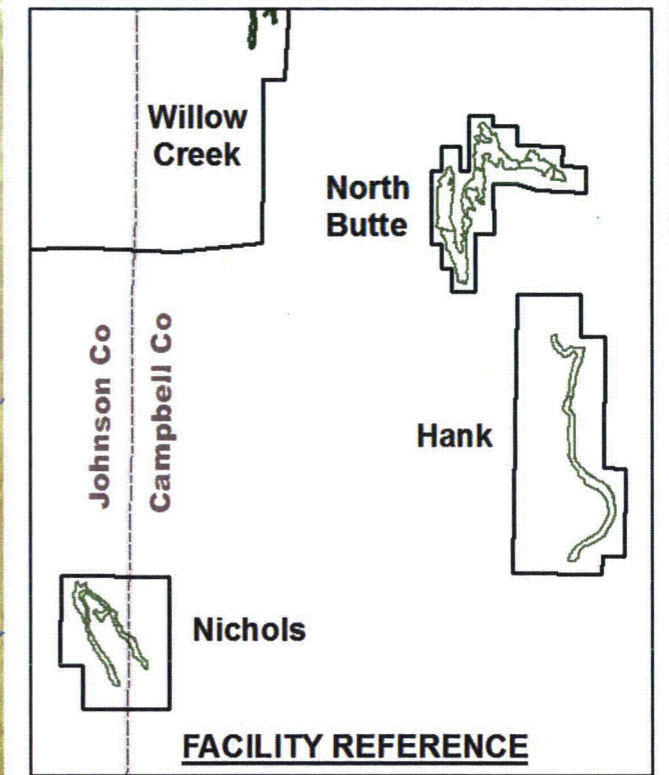
Domestic / Stock Wells: Sand Interval

- Stock B/C/F
- Stock B/F
- Stock C/F
- Stock C/F/G/H
- Stock F
- Stock F/G/H

Permit Boundary

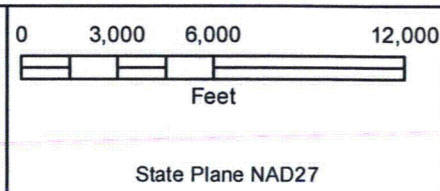
Mine Unit Boundary

Drainage



NOTES:
 Base map information and associated data provided by Wyoming Geographic Information Science Center and the USGS. Site data provided by Cameco. Data interpretation by AQUI-VER, INC.

AQUI-VER, INC.
 Hydrogeology, Water Resources & Data Services



PROJECT 40100542
 DATE: 3/15/11
 DRAWN BY: CLIN
 REVIEWED BY:
 Y:\Clients\indep\40100542\GRAPHICS\GIS\MXD_figures\5-17-HANK_DRAWDOWN_F-SAND.mxd

HANK FACILITY DRAWDOWN IMPACT - F-SAND
 DEVELOPMENT YEAR 8

CAMECO RESOURCES HANK FACILITY
 CAMPBELL COUNTY - WYOMING

FIGURE:
 5-17