

Status: Y N U

Seismic Walkdown Checklist (SWC)

Equipment ID No.: 1VQ034

Equipment Class: (7) Fluid-Operated Valves

Equipment Description: DW VENT/PURGE OTLT UPSTRM ISOL

Project: LaSalle 1 SWEL

Location (Bldg, Elev, Room/Area): RB, 807.00 ft, ALL

Manufacturer/Model:

Instructions for Completing Checklist

This checklist may be used to document the results of the Seismic Walkdown of an item of equipment on the SWEL. The space below each of the following questions may be used to record the results of judgments and findings. Additional space is provided at the end of this checklist for documenting other comments.

Anchorage

1. Is anchorage configuration verification required (i.e., is the item one of the 50% of SWEL items requiring such verification)? No

2. Is the anchorage free of bent, broken, missing or loose hardware? Not Applicable

3. Is the anchorage free of corrosion that is more than mild surface oxidation? Not Applicable

4. Is the anchorage free of visible cracks in the concrete near the anchors? Not Applicable

5. Is the anchorage configuration consistent with plant documentation? (Note: This question only applies if the item is one of the 50% for which an anchorage configuration verification is required.) Not Applicable

6. Based on the above anchorage evaluations, is the anchorage free of potentially adverse seismic conditions? Yes

Status: Y N U

Seismic Walkdown Checklist (SWC)

Equipment ID No.: 1VQ034

Equipment Class: (7) Fluid-Operated Valves

Equipment Description: DW VENT/PURGE OTLT UPSTRM ISOL

Interaction Effects

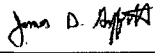

7. Are soft targets free from impact by nearby equipment or structures? Yes
8. Are overhead equipment, distribution systems, ceiling tiles and lighting, and masonry block walls not likely to collapse onto the equipment? Yes
Overhead light fixtures judged to be acceptable.
9. Do attached lines have adequate flexibility to avoid damage? Yes
10. Based on the above seismic interaction evaluations, is equipment free of potentially adverse seismic interaction effects? Yes

Other Adverse Conditions

11. Have you looked for and found no adverse seismic conditions that could adversely affect the safety functions of the equipment? Yes

Comments

Seismic Walkdown Team: J. Griffith & M. Wodarczyk - 9/10/2012

Evaluated by:  James Griffith Date: 10/17/2012
 Michael Wodarczyk 10/17/2012

Status: Y N U

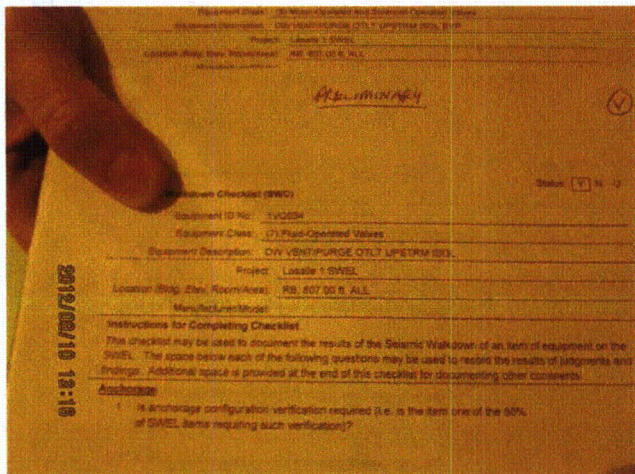
Seismic Walkdown Checklist (SWC)

Equipment ID No.: 1VQ034

Equipment Class: (7) Fluid-Operated Valves

Equipment Description: DW VENT/PURGE OTLT UPSTRM ISOL

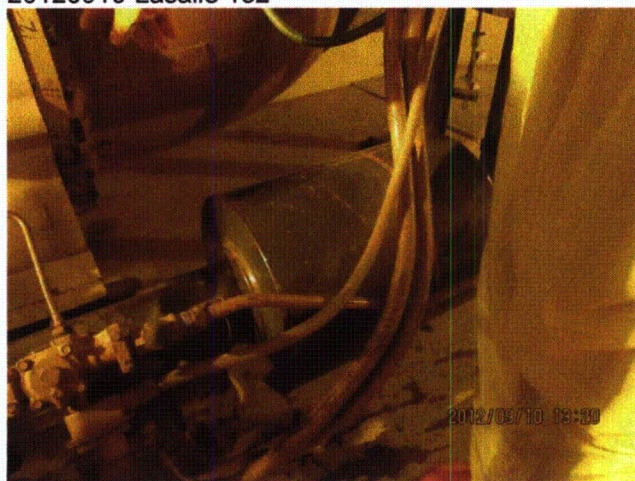
Photos



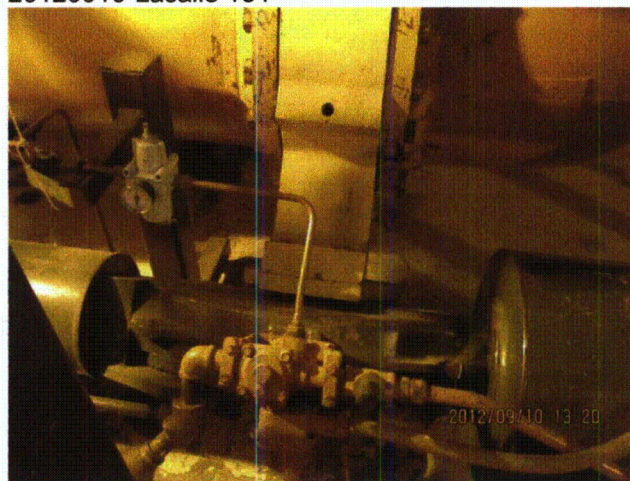
20120910-Lasalle 182



20120910-Lasalle 184



20120910-Lasalle 185



20120910-Lasalle 186

Status: Y N U

Seismic Walkdown Checklist (SWC)

Equipment ID No.: 1VQ034

Equipment Class: (7) Fluid-Operated Valves

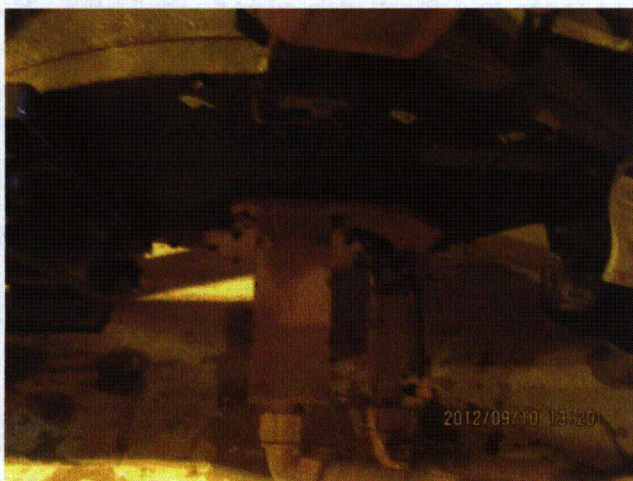
Equipment Description: DW VENT/PURGE OTLT UPSTRM ISOL



20120910-Lasalle 187



20120910-Lasalle 188



20120910-Lasalle 189

Status: Y N U

Seismic Walkdown Checklist (SWC)

Equipment ID No.: 1VQ035

Equipment Class: (8) Motor-Operated and Solenoid-Operated Valves

Equipment Description: DW VENT/PURGE OTLT UPSTRM ISOL BYP

Project: LaSalle 1 SWEL

Location (Bldg, Elev, Room/Area): RB, 807.00 ft, ALL

Manufacturer/Model:

Instructions for Completing Checklist

This checklist may be used to document the results of the Seismic Walkdown of an item of equipment on the SWEL. The space below each of the following questions may be used to record the results of judgments and findings. Additional space is provided at the end of this checklist for documenting other comments.

Anchorage

1. Is anchorage configuration verification required (i.e., is the item one of the 50% of SWEL items requiring such verification)? No

2. Is the anchorage free of bent, broken, missing or loose hardware? Not Applicable

3. Is the anchorage free of corrosion that is more than mild surface oxidation? Not Applicable

4. Is the anchorage free of visible cracks in the concrete near the anchors? Not Applicable

5. Is the anchorage configuration consistent with plant documentation? (Note: This question only applies if the item is one of the 50% for which an anchorage configuration verification is required.) Not Applicable

6. Based on the above anchorage evaluations, is the anchorage free of potentially adverse seismic conditions? Yes

Status: Y N U

Seismic Walkdown Checklist (SWC)

Equipment ID No.: 1VQ035

Equipment Class: (8) Motor-Operated and Solenoid-Operated Valves

Equipment Description: DW VENT/PURGE OTLT UPSTRM ISOL BYP

Interaction Effects

7. Are soft targets free from impact by nearby equipment or structures? Yes
8. Are overhead equipment, distribution systems, ceiling tiles and lighting, and masonry block walls not likely to collapse onto the equipment? Yes
Overhead light fixtures judged to be acceptable.
9. Do attached lines have adequate flexibility to avoid damage? Yes
10. Based on the above seismic interaction evaluations, is equipment free of potentially adverse seismic interaction effects? Yes

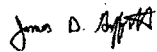
Other Adverse Conditions

11. Have you looked for and found no adverse seismic conditions that could adversely affect the safety functions of the equipment? Yes
Approximate 1" clearance between flexible conduit connection to valve operator and floor judged to be acceptable.

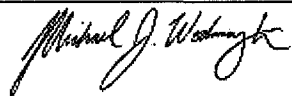
Comments

Seismic Walkdown Team: J. Griffith & M. Wodarczyk - 9/10/2012

Evaluated by:

 James Griffith

Date: 10/17/2012



Michael Wodarczyk

10/17/2012

Status: Y N U

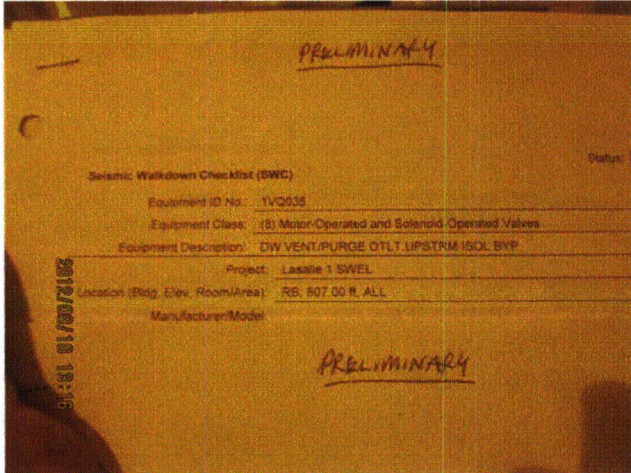
Seismic Walkdown Checklist (SWC)

Equipment ID No.: 1VQ035

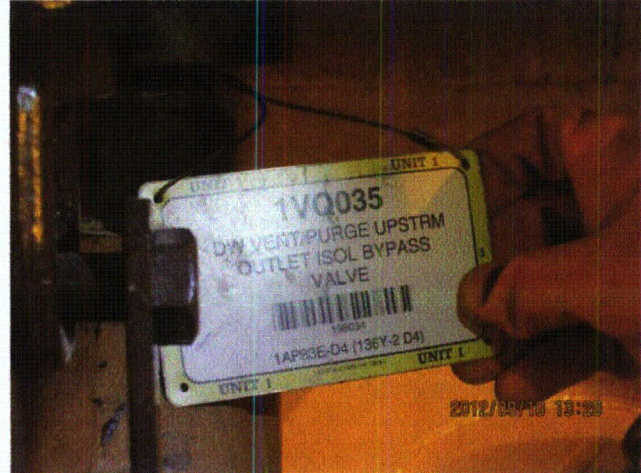
Equipment Class: (8) Motor-Operated and Solenoid-Operated Valves

Equipment Description: DW VENT/PURGE OTLT UPSTRM ISOL BYP

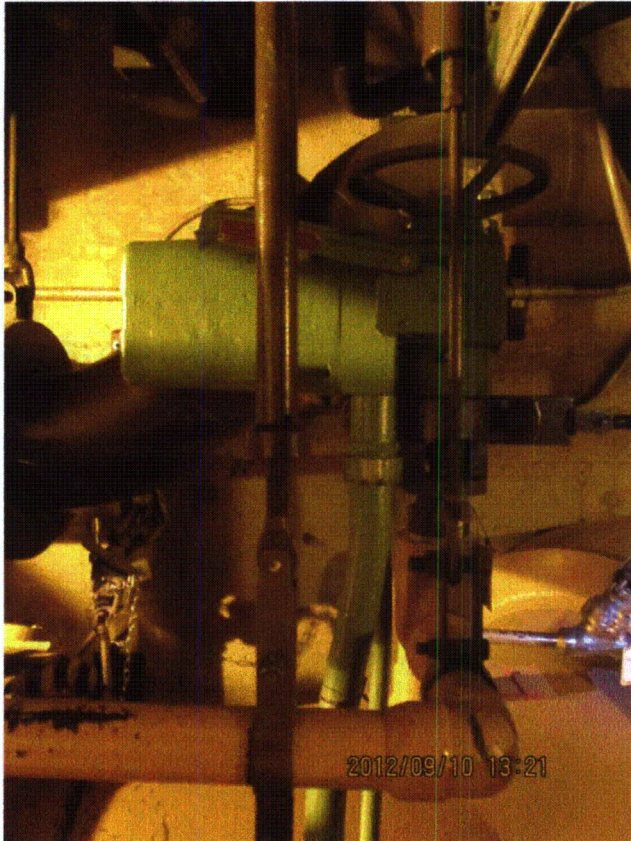
Photos



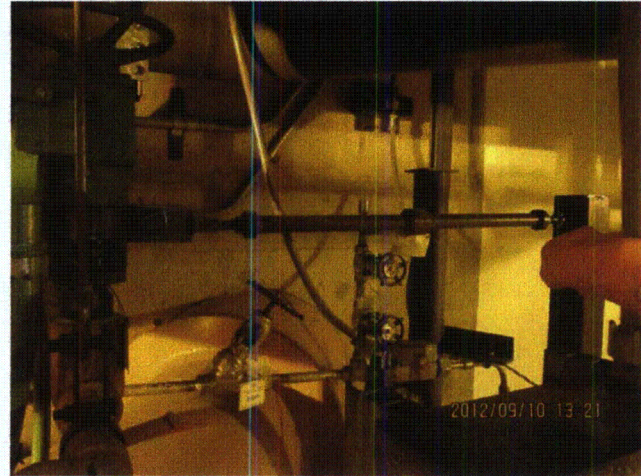
20120910-Lasalle 183



20120910-Lasalle 190



20120910-Lasalle 191



20120910-Lasalle 192

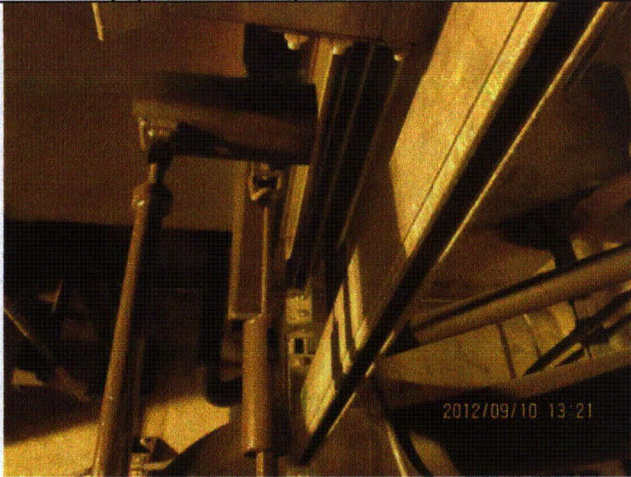
Status: Y N U

Seismic Walkdown Checklist (SWC)

Equipment ID No.: 1VQ035

Equipment Class: (8) Motor-Operated and Solenoid-Operated Valves

Equipment Description: DW VENT/PURGE OTLT UPSTRM ISOL BYP



20120910-Lasalle 193

Status: Y N U

Seismic Walkdown Checklist (SWC)

Equipment ID No.: 1VQ036

Equipment Class: (7) Fluid-Operated Valves

Equipment Description: DW VENT/PURGE OTLT DWNST ISOL

Project: LaSalle 1 SWEL

Location (Bldg, Elev, Room/Area): RB, 807.00 ft, ALL

Manufacturer/Model:

Instructions for Completing Checklist

This checklist may be used to document the results of the Seismic Walkdown of an item of equipment on the SWEL. The space below each of the following questions may be used to record the results of judgments and findings. Additional space is provided at the end of this checklist for documenting other comments.

Anchorage

1. Is anchorage configuration verification required (i.e., is the item one of the 50% of SWEL items requiring such verification)? No

2. Is the anchorage free of bent, broken, missing or loose hardware? Not Applicable

3. Is the anchorage free of corrosion that is more than mild surface oxidation? Not Applicable

4. Is the anchorage free of visible cracks in the concrete near the anchors? Not Applicable

5. Is the anchorage configuration consistent with plant documentation? (Note: This question only applies if the item is one of the 50% for which an anchorage configuration verification is required.) Not Applicable

6. Based on the above anchorage evaluations, is the anchorage free of potentially adverse seismic conditions? Yes

Status: Y N U

Seismic Walkdown Checklist (SWC)

Equipment ID No.: 1VQ036

Equipment Class: (7) Fluid-Operated Valves

Equipment Description: DW VENT/PURGE OTLT DWNST ISOL

Interaction Effects

7. Are soft targets free from impact by nearby equipment or structures? Yes
8. Are overhead equipment, distribution systems, ceiling tiles and lighting, and masonry block walls not likely to collapse onto the equipment? Yes
9. Do attached lines have adequate flexibility to avoid damage? Yes
10. Based on the above seismic interaction evaluations, is equipment free of potentially adverse seismic interaction effects? Yes

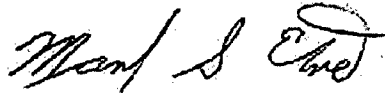
Other Adverse Conditions

11. Have you looked for and found no adverse seismic conditions that could adversely affect the safety functions of the equipment? Yes

Comments

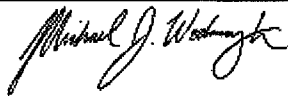
Seismic Walkdown Team: M. Etre & M. Wodarczyk - 9/17/2012

Evaluated by:



Mark Etre

Date: 10/17/2012



Michael Wodarczyk

10/17/2012

Status: Y N U

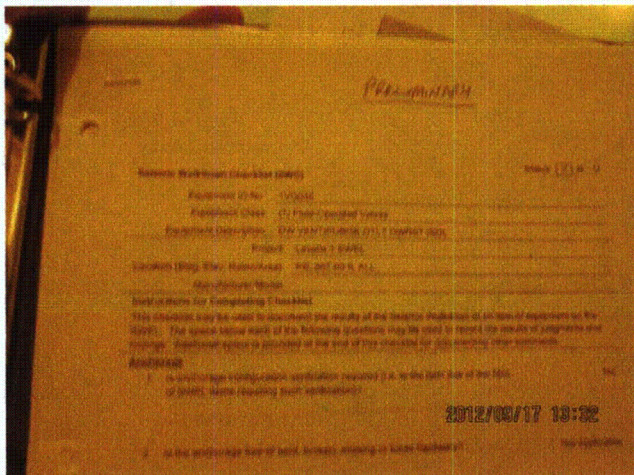
Seismic Walkdown Checklist (SWC)

Equipment ID No.: 1VQ036

Equipment Class: (7) Fluid-Operated Valves

Equipment Description: DW VENT/PURGE OTLT DWNST ISOL

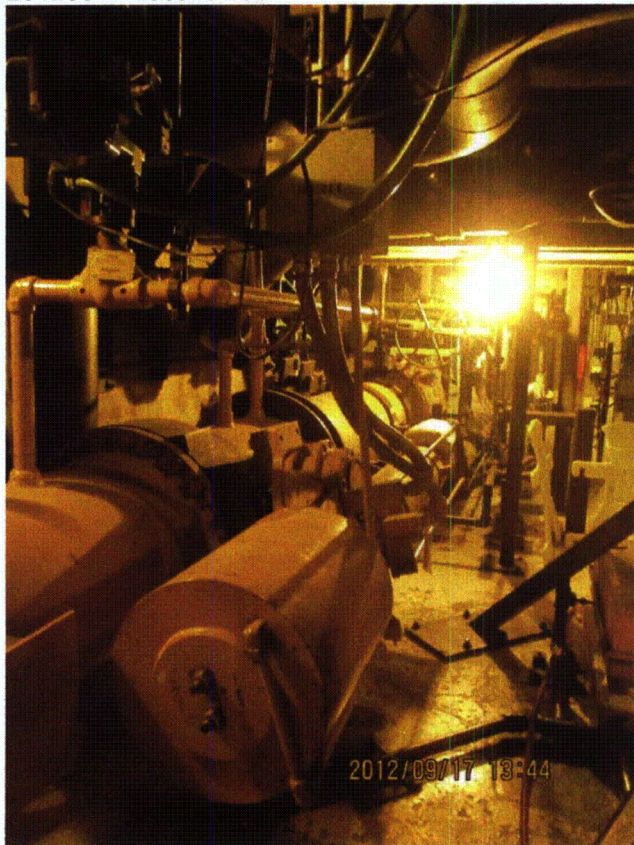
Photos



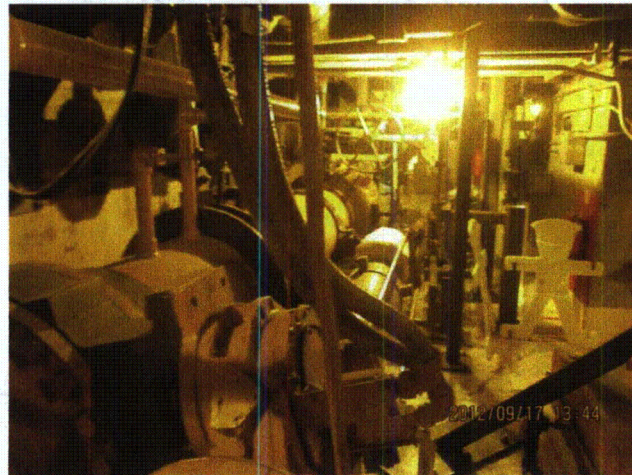
20120917-Lasalle 203



20120917-Lasalle 204



20120917-Lasalle 205



20120917-Lasalle 206

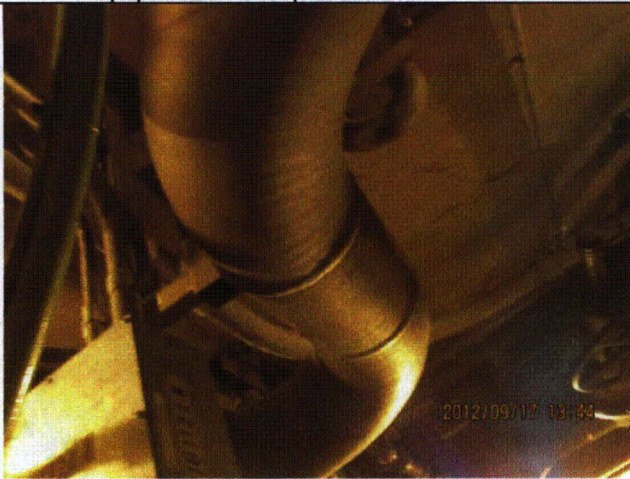
Status: Y N U

Seismic Walkdown Checklist (SWC)

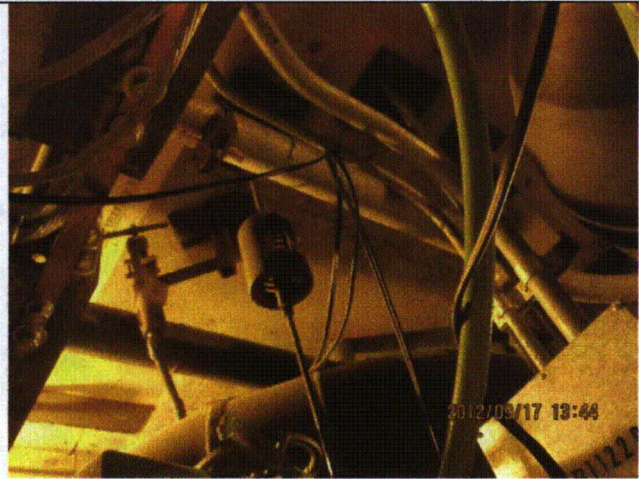
Equipment ID No.: 1VQ036

Equipment Class: (7) Fluid-Operated Valves

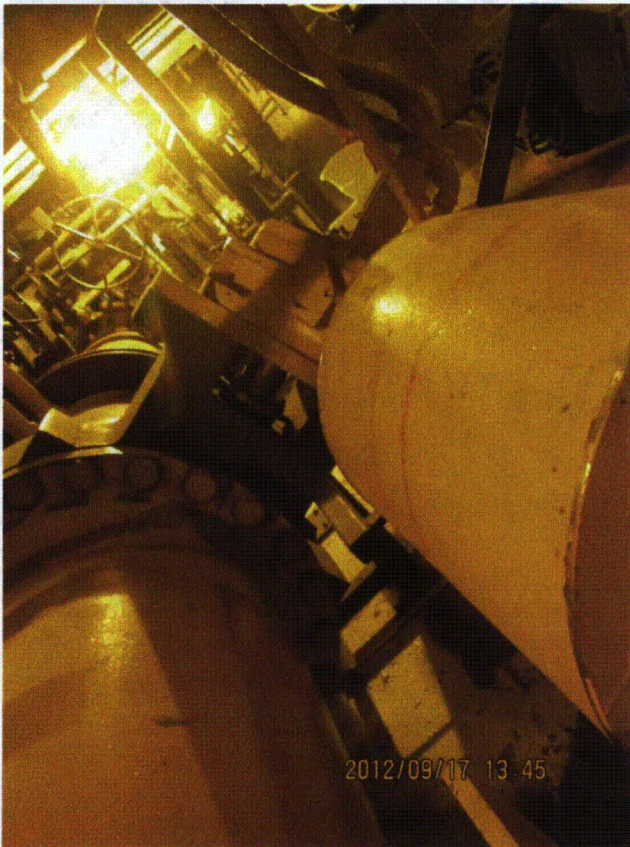
Equipment Description: DW VENT/PURGE OTLT DWNST ISOL



20120917-Lasalle 207



20120917-Lasalle 208



20120917-Lasalle 209

Status: Y N U

Seismic Walkdown Checklist (SWC)

Equipment ID No.: 1VQ040

Equipment Class: (7) Fluid-Operated Valves

Equipment Description: SUP CHBR VENT/PURGE OUTLET DWNST ISOL VALVE

Project: LaSalle 1 SWEL

Location (Bldg, Elev, Room/Area): RB, 710.00 ft, ALL

Manufacturer/Model:

Instructions for Completing Checklist

This checklist may be used to document the results of the Seismic Walkdown of an item of equipment on the SWEL. The space below each of the following questions may be used to record the results of judgments and findings. Additional space is provided at the end of this checklist for documenting other comments.

Anchorage

1. Is anchorage configuration verification required (i.e., is the item one of the 50% of SWEL items requiring such verification)? No

2. Is the anchorage free of bent, broken, missing or loose hardware? Not Applicable

3. Is the anchorage free of corrosion that is more than mild surface oxidation? Not Applicable

4. Is the anchorage free of visible cracks in the concrete near the anchors? Not Applicable

5. Is the anchorage configuration consistent with plant documentation? (Note: This question only applies if the item is one of the 50% for which an anchorage configuration verification is required.) Not Applicable

6. Based on the above anchorage evaluations, is the anchorage free of potentially adverse seismic conditions? Yes

Status: Y N U

Seismic Walkdown Checklist (SWC)

Equipment ID No.: 1VQ040

Equipment Class: (7) Fluid-Operated Valves

Equipment Description: SUP CHBR VENT/PURGE OUTLET DWNST ISOL VALVE

Interaction Effects

7. Are soft targets free from impact by nearby equipment or structures? Yes
8. Are overhead equipment, distribution systems, ceiling tiles and lighting, and masonry block walls not likely to collapse onto the equipment? Yes
Valve mounted high overhead; few overhead items can impact valve.
9. Do attached lines have adequate flexibility to avoid damage? Yes
10. Based on the above seismic interaction evaluations, is equipment free of potentially adverse seismic interaction effects? Yes

Other Adverse Conditions

11. Have you looked for and found no adverse seismic conditions that could adversely affect the safety functions of the equipment? Yes

Comments

Seismic Walkdown Team: M. Etre & M. Wodarczyk - 9/17/2012

Evaluated by:



Mark Etre

Date: 10/17/2012



Michael Wodarczyk

10/17/2012

Status: Y N U

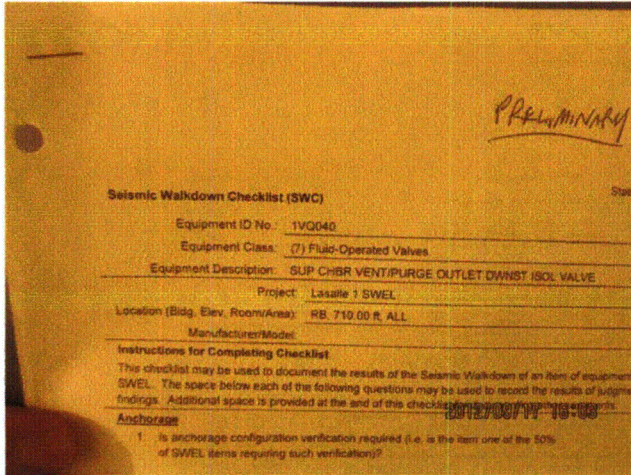
Seismic Walkdown Checklist (SWC)

Equipment ID No.: 1VQ040

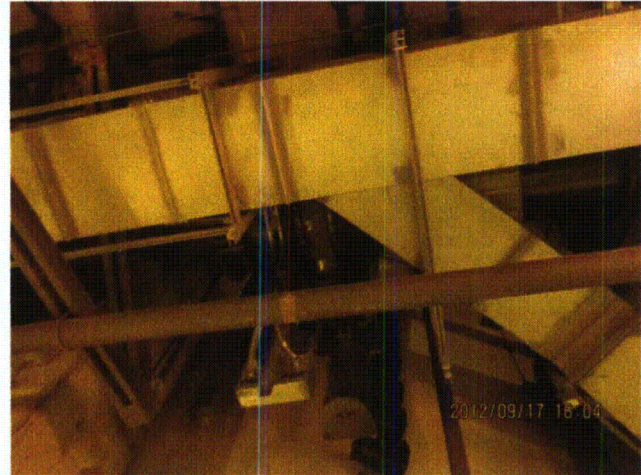
Equipment Class: (7) Fluid-Operated Valves

Equipment Description: SUP CHBR VENT/PURGE OUTLET DWNST ISOL VALVE

Photos



20120917-Lasalle 279



20120917-Lasalle 280



20120917-Lasalle 281



20120917-Lasalle 282

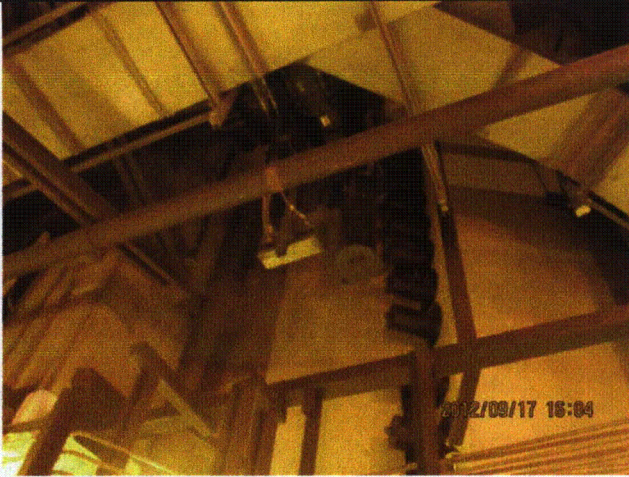
Status: Y N U

Seismic Walkdown Checklist (SWC)

Equipment ID No.: 1VQ040

Equipment Class: (7) Fluid-Operated Valves

Equipment Description: SUP CHBR VENT/PURGE OUTLET DWNST ISOL VALVE



20120917-Lasalle 283

Status: Y N U

Seismic Walkdown Checklist (SWC)

Equipment ID No.: 1VX04C

Equipment Class: (9) Fans

Equipment Description: FAN, ESS SWGR DIV-2 VENT SUPPLY

Project: LaSalle 1 SWEL

Location (Bldg, Elev, Room/Area): AB, 731.00 ft, ALL

Manufacturer/Model:

Instructions for Completing Checklist

This checklist may be used to document the results of the Seismic Walkdown of an item of equipment on the SWEL. The space below each of the following questions may be used to record the results of judgments and findings. Additional space is provided at the end of this checklist for documenting other comments.

Anchorage

1. Is anchorage configuration verification required (i.e., is the item one of the 50% of SWEL items requiring such verification)? Yes

2. Is the anchorage free of bent, broken, missing or loose hardware? Yes

3. Is the anchorage free of corrosion that is more than mild surface oxidation? Yes

4. Is the anchorage free of visible cracks in the concrete near the anchors? Yes

5. Is the anchorage configuration consistent with plant documentation? (Note: This question only applies if the item is one of the 50% for which an anchorage configuration verification is required.) Yes
Anchorage shown on drawings M-1566, Rev. E and M-1592, Sheet 19, Rev. E.

6. Based on the above anchorage evaluations, is the anchorage free of potentially adverse seismic conditions? Yes

Status: Y N U

Seismic Walkdown Checklist (SWC)

Equipment ID No.: 1VX04C

Equipment Class: (9) Fans

Equipment Description: FAN, ESS SWGR DIV-2 VENT SUPPLY

Interaction Effects

- 7. Are soft targets free from impact by nearby equipment or structures? Yes

- 8. Are overhead equipment, distribution systems, ceiling tiles and lighting, and masonry block walls not likely to collapse onto the equipment? Yes
Adjacent masonry column pilaster (column L-11) with running bond construction judged to be acceptable.

- 9. Do attached lines have adequate flexibility to avoid damage? Yes


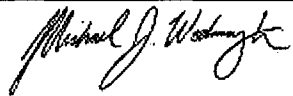
- 10. Based on the above seismic interaction evaluations, is equipment free of potentially adverse seismic interaction effects? Yes

Other Adverse Conditions

- 11. Have you looked for and found no adverse seismic conditions that could adversely affect the safety functions of the equipment? Yes

Comments

Seismic Walkdown Team: J. Griffith & M. Wodarczyk - 9/12/2012

Evaluated by:  James Griffith Date: 10/17/2012
 Michael Wodarczyk 10/17/2012

Status: Y N U

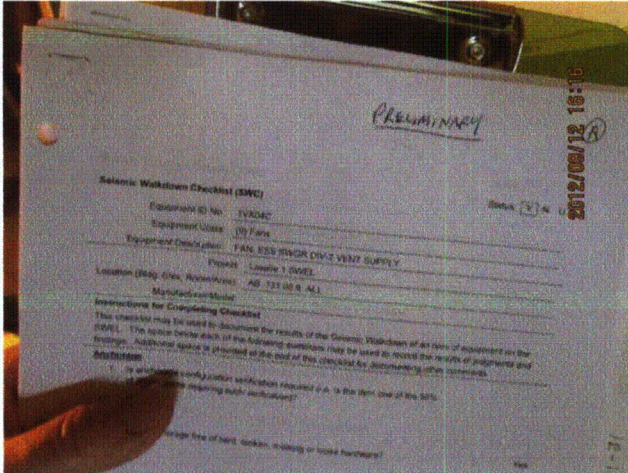
Seismic Walkdown Checklist (SWC)

Equipment ID No.: 1VX04C

Equipment Class: (9) Fans

Equipment Description: FAN, ESS SWGR DIV-2 VENT SUPPLY

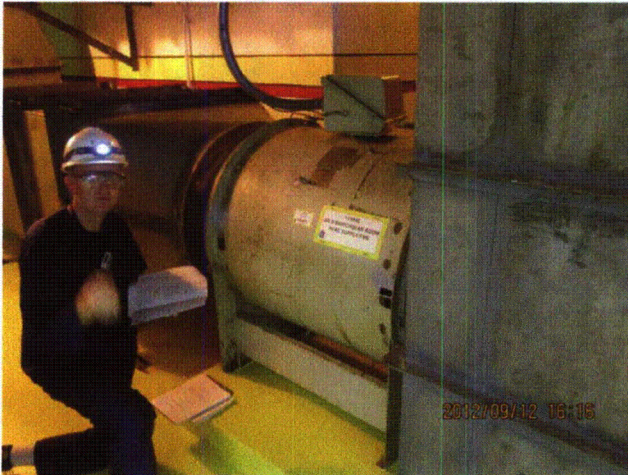
Photos



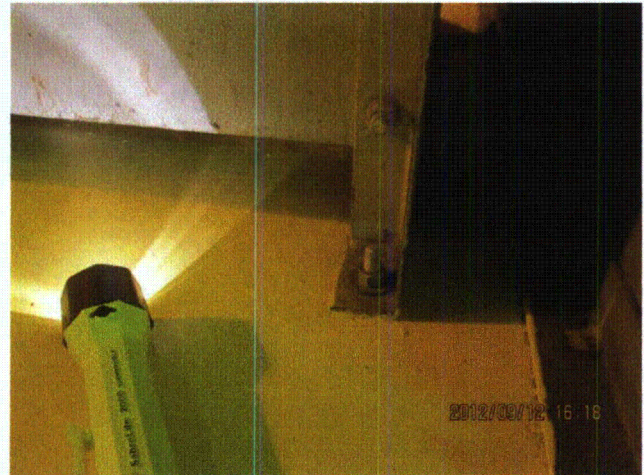
20120912-Lasalle 269



20120912-Lasalle 270



20120912-Lasalle 271



20120912-Lasalle 272

Status: Y N U

Seismic Walkdown Checklist (SWC)

Equipment ID No.: 1VX04C

Equipment Class: (9) Fans

Equipment Description: FAN, ESS SWGR DIV-2 VENT SUPPLY



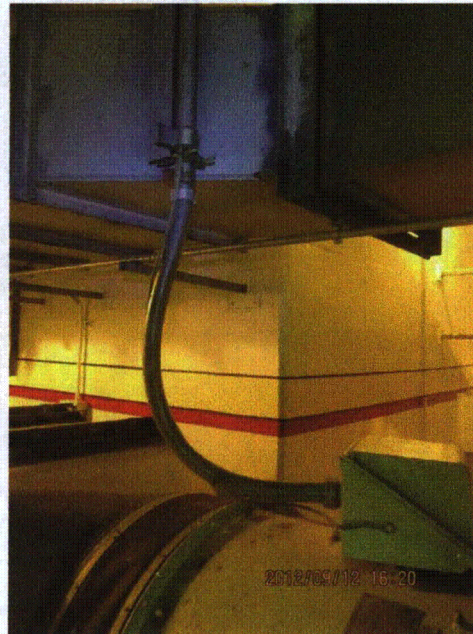
20120912-Lasalle 273



20120912-Lasalle 274



20120912-Lasalle 275



Lasalle 276

20120912-

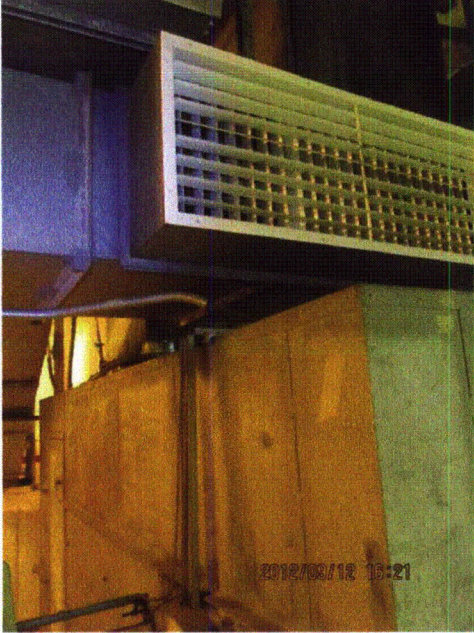
Status: Y N U

Seismic Walkdown Checklist (SWC)

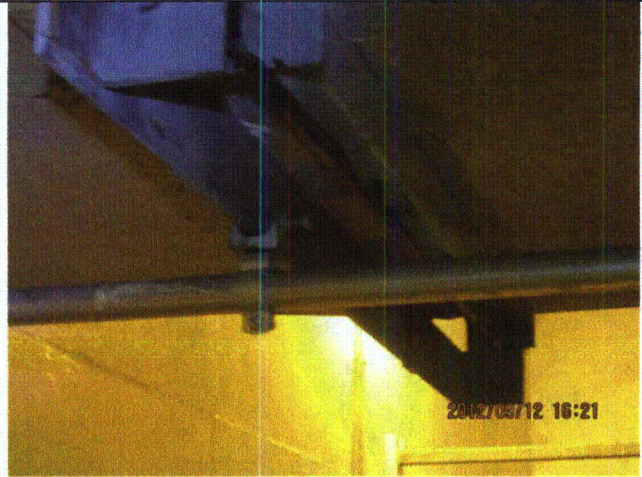
Equipment ID No.: 1VX04C

Equipment Class: (9) Fans

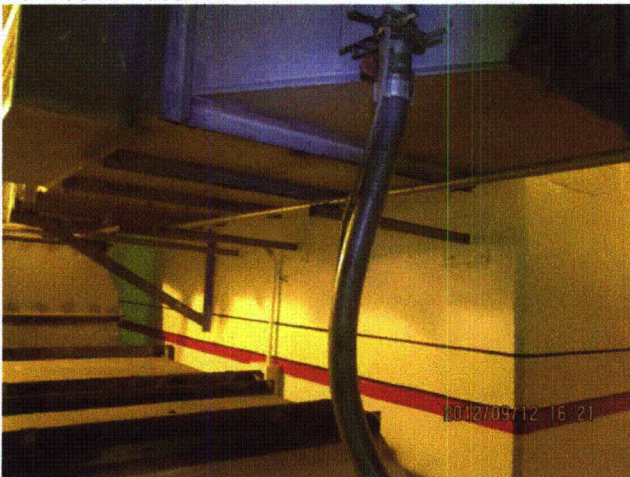
Equipment Description: FAN, ESS SWGR DIV-2 VENT SUPPLY



20120912-Lasalle 277



20120912-Lasalle 278



20120912-Lasalle 279



20120912-Lasalle 280

Status: Y N U

Seismic Walkdown Checklist (SWC)

Equipment ID No.: 1VX04C

Equipment Class: (9) Fans

Equipment Description: FAN, ESS SWGR DIV-2 VENT SUPPLY



2012/09/12 16:22

20120912-Lasalle 281

Status: Y N U

Seismic Walkdown Checklist (SWC)

Equipment ID No.: 1VX05C

Equipment Class: (9) Fans

Equipment Description: FAN, ESS SWGR DIV-2 BATT ROOM EXH

Project: LaSalle 1 SWEL

Location (Bldg, Elev, Room/Area): AB, 731.00 ft, ALL

Manufacturer/Model:

Instructions for Completing Checklist

This checklist may be used to document the results of the Seismic Walkdown of an item of equipment on the SWEL. The space below each of the following questions may be used to record the results of judgments and findings. Additional space is provided at the end of this checklist for documenting other comments.

Anchorage

1. Is anchorage configuration verification required (i.e., is the item one of the 50% of SWEL items requiring such verification)? No

2. Is the anchorage free of bent, broken, missing or loose hardware? Yes

3. Is the anchorage free of corrosion that is more than mild surface oxidation? Yes

4. Is the anchorage free of visible cracks in the concrete near the anchors? Yes

5. Is the anchorage configuration consistent with plant documentation? (Note: This question only applies if the item is one of the 50% for which an anchorage configuration verification is required.) Not Applicable

6. Based on the above anchorage evaluations, is the anchorage free of potentially adverse seismic conditions? Yes

Status: Y N U

Seismic Walkdown Checklist (SWC)

Equipment ID No.: 1VX05C

Equipment Class: (9) Fans

Equipment Description: FAN, ESS SWGR DIV-2 BATT ROOM EXH

Interaction Effects

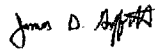
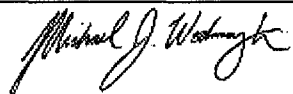
7. Are soft targets free from impact by nearby equipment or structures? Yes
8. Are overhead equipment, distribution systems, ceiling tiles and lighting, and masonry block walls not likely to collapse onto the equipment? Yes
Overhead light fixtures judged to be acceptable.
Adjacent masonry walls are safety-related per drawing A-186, Rev. AR.
9. Do attached lines have adequate flexibility to avoid damage? Yes
10. Based on the above seismic interaction evaluations, is equipment free of potentially adverse seismic interaction effects? Yes

Other Adverse Conditions

11. Have you looked for and found no adverse seismic conditions that could adversely affect the safety functions of the equipment? Yes

Comments

Seismic Walkdown Team: J. Griffith & M. Wodarcyk - 9/12/2012

Evaluated by:  James Griffith Date: 10/17/2012
 Michael Wodarcyk 10/17/2012

Status: Y N U

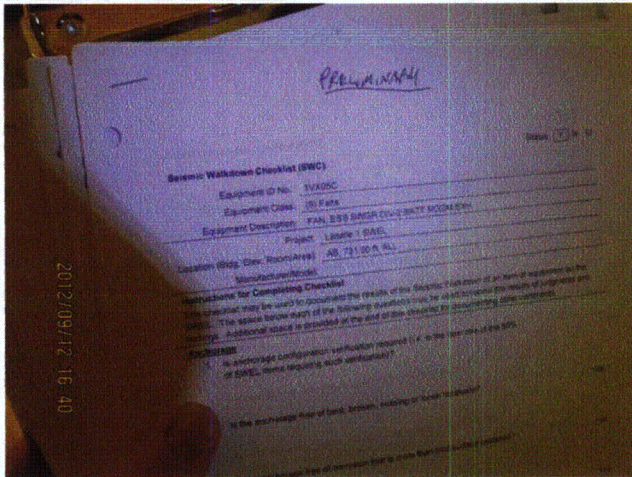
Seismic Walkdown Checklist (SWC)

Equipment ID No.: 1VX05C

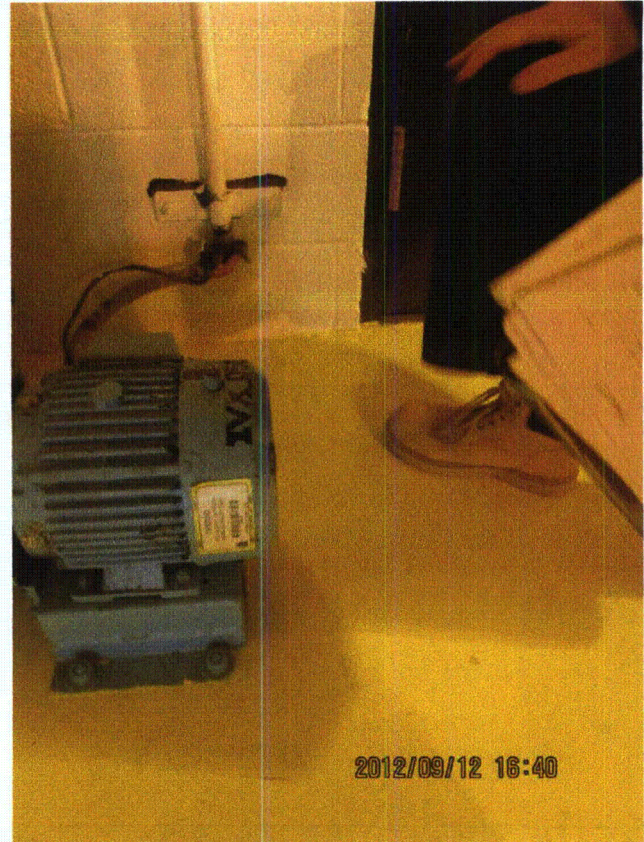
Equipment Class: (9) Fans

Equipment Description: FAN, ESS SWGR DIV-2 BATT ROOM EXH

Photos



20120912-Lasalle 299



20120912-Lasalle 300

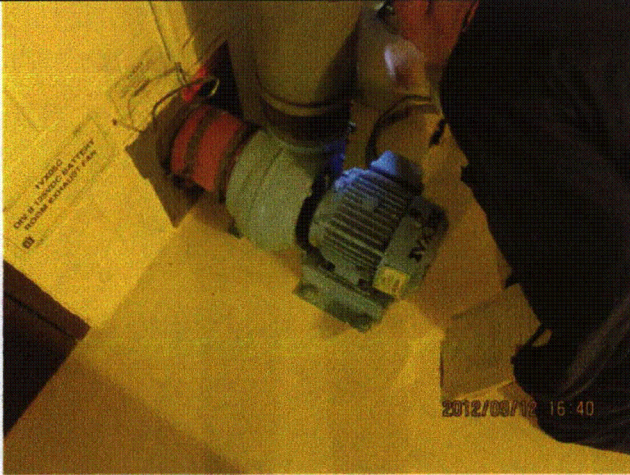
Status: Y N U

Seismic Walkdown Checklist (SWC)

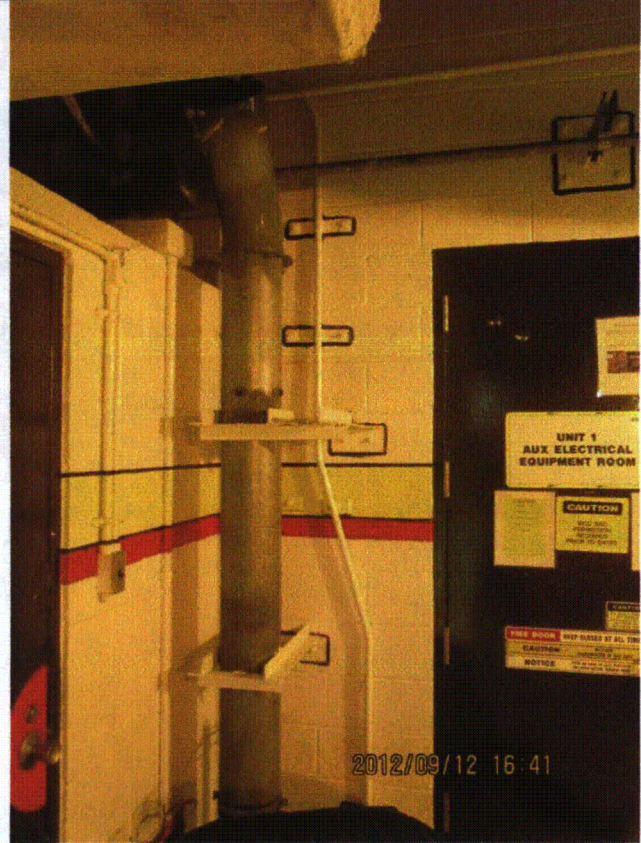
Equipment ID No.: 1VX05C

Equipment Class: (9) Fans

Equipment Description: FAN, ESS SWGR DIV-2 BATT ROOM EXH



20120912-Lasalle 301



20120912-Lasalle 302

Status: Y N U

Seismic Walkdown Checklist (SWC)

Equipment ID No.: 1VX05C

Equipment Class: (9) Fans

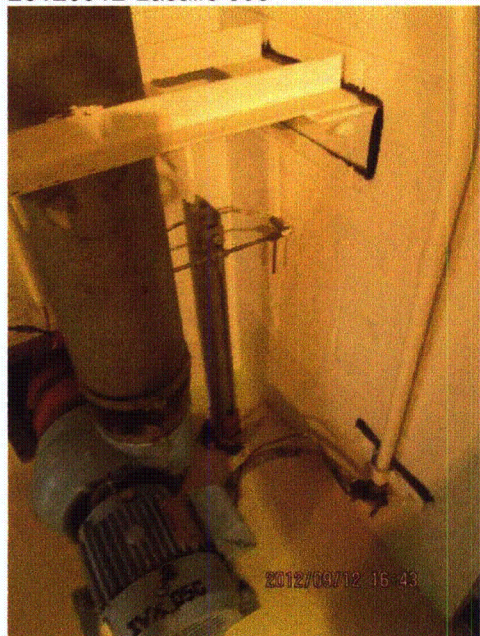
Equipment Description: FAN, ESS SWGR DIV-2 BATT ROOM EXH



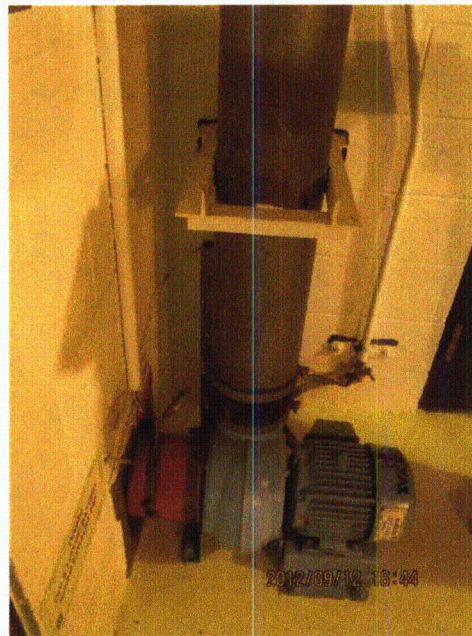
20120912-Lasalle 303



20120912-Lasalle 304



20120912-Lasalle 305



20120912-Lasalle 306

Status: Y N U

Seismic Walkdown Checklist (SWC)

Equipment ID No.: 1VX05C

Equipment Class: (9) Fans

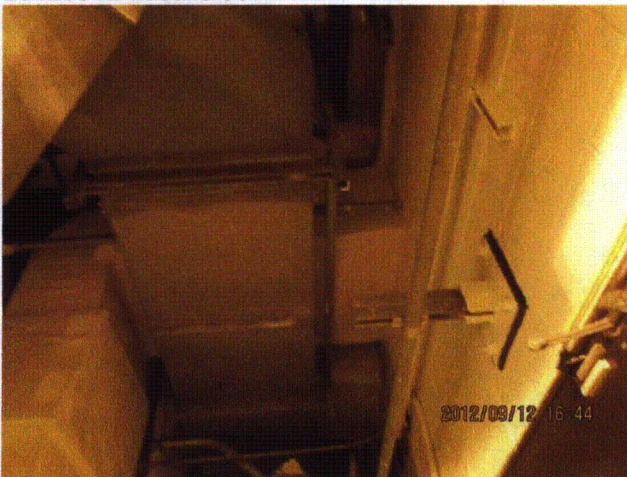
Equipment Description: FAN, ESS SWGR DIV-2 BATT ROOM EXH



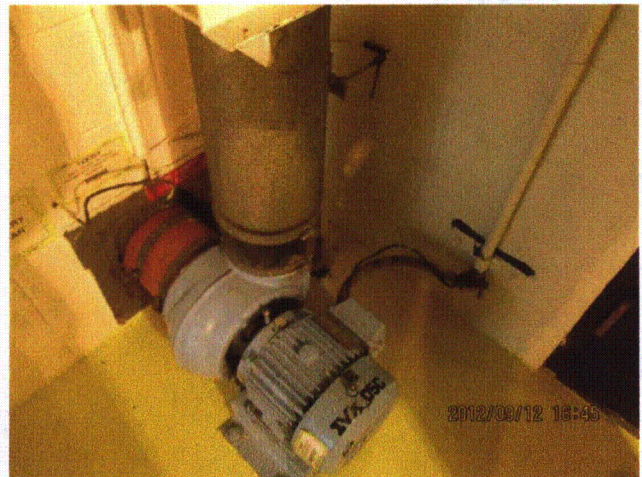
20120912-Lasalle 307



20120912-Lasalle 308



20120912-Lasalle 309



20120912-Lasalle 310

Status: Y N U

Seismic Walkdown Checklist (SWC)

Equipment ID No.: 1VY02C

Equipment Class: (10) Air Handlers

Equipment Description: HPCS PUMP ROOM COOLER VENT FAN

Project: LaSalle 1 SWEL

Location (Bldg, Elev, Room/Area): RB, 694.00 ft, ALL

Manufacturer/Model:

Instructions for Completing Checklist

This checklist may be used to document the results of the Seismic Walkdown of an item of equipment on the SWEL. The space below each of the following questions may be used to record the results of judgments and findings. Additional space is provided at the end of this checklist for documenting other comments.

Anchorage

1. Is anchorage configuration verification required (i.e., is the item one of the 50% of SWEL items requiring such verification)? Yes

2. Is the anchorage free of bent, broken, missing or loose hardware? Yes

3. Is the anchorage free of corrosion that is more than mild surface oxidation? Yes

4. Is the anchorage free of visible cracks in the concrete near the anchors? Yes
Some minor cracking and spalling in grout pads. Anchors are cast-in-place into fan pedestal and are judged to be acceptable.

5. Is the anchorage configuration consistent with plant documentation? (Note: This question only applies if the item is one of the 50% for which an anchorage configuration verification is required.) Yes
Anchorage shown on drawings M-1570, Rev. B and M-1590, Sheet 7, Rev. J.

6. Based on the above anchorage evaluations, is the anchorage free of potentially adverse seismic conditions? Yes

Status: Y N U

Seismic Walkdown Checklist (SWC)

Equipment ID No.: 1VY02C

Equipment Class: (10) Air Handlers

Equipment Description: HPCS PUMP ROOM COOLER VENT FAN

Interaction Effects

7. Are soft targets free from impact by nearby equipment or structures? Yes
8. Are overhead equipment, distribution systems, ceiling tiles and lighting, and masonry block walls not likely to collapse onto the equipment? Yes
9. Do attached lines have adequate flexibility to avoid damage? Yes
10. Based on the above seismic interaction evaluations, is equipment free of potentially adverse seismic interaction effects? Yes

Other Adverse Conditions

11. Have you looked for and found no adverse seismic conditions that could adversely affect the safety functions of the equipment? Yes

Comments

Seismic Walkdown Team: D. Carter & J. Griffith - 9/4/2012

Evaluated by: *David Carter* David Carter Date: 10/17/2012
James D. Griffith James Griffith 10/17/2012

Status: Y N U

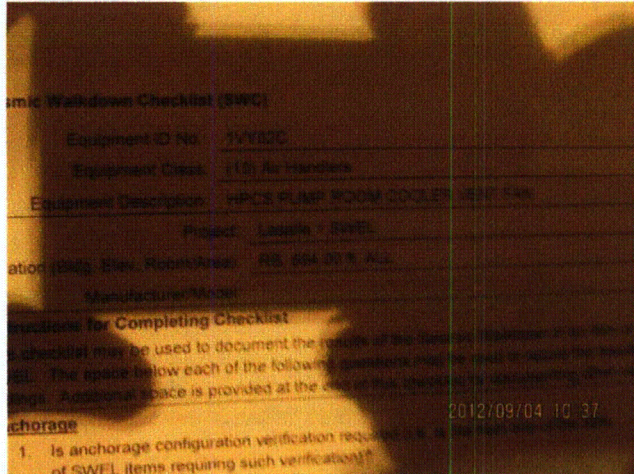
Seismic Walkdown Checklist (SWC)

Equipment ID No.: 1VY02C

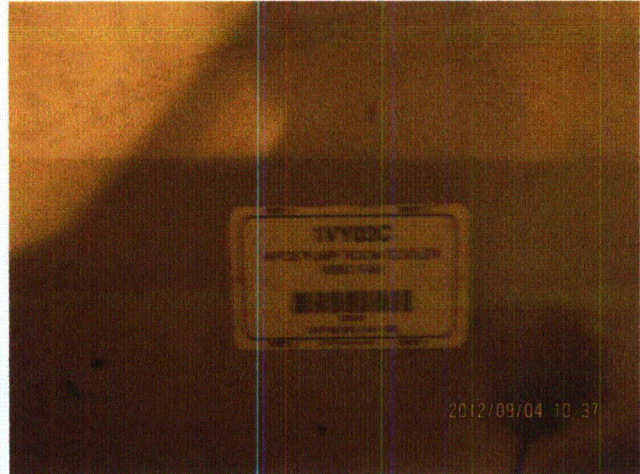
Equipment Class: (10) Air Handlers

Equipment Description: HPCS PUMP ROOM COOLER VENT FAN

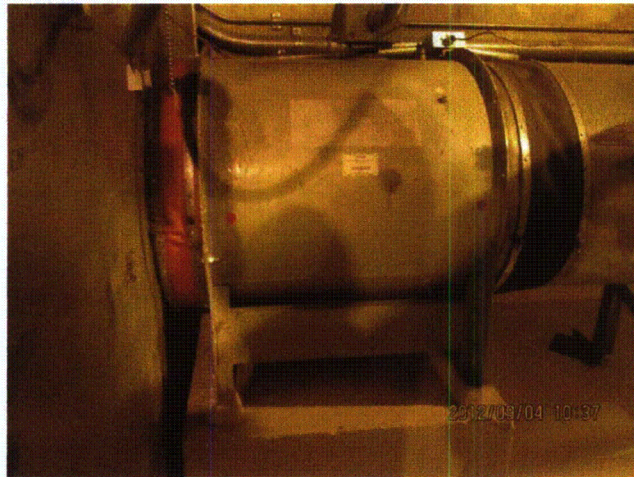
Photos



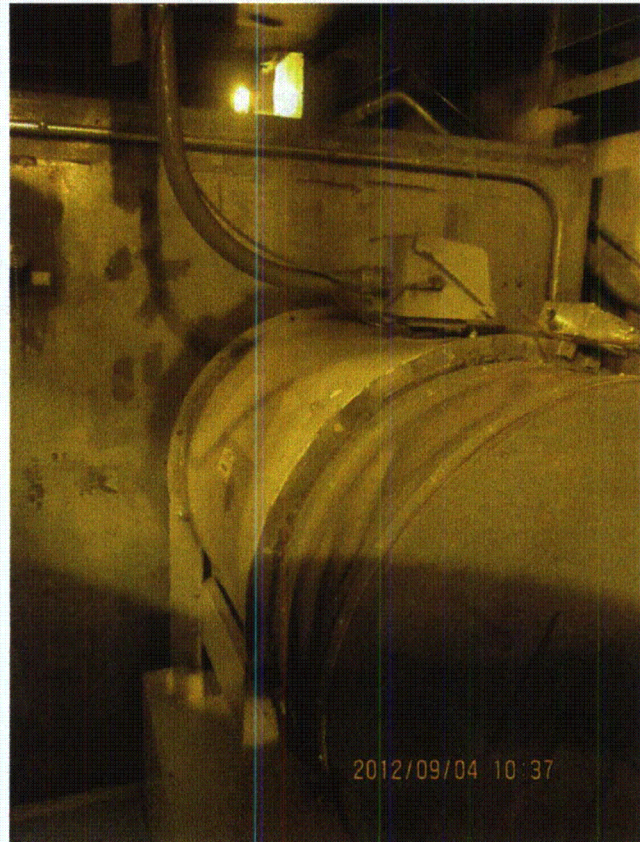
LaSalle 112



LaSalle 113



LaSalle 114



LaSalle 115

Status: Y N U

Seismic Walkdown Checklist (SWC)

Equipment ID No.: 1VY02C

Equipment Class: (10) Air Handlers

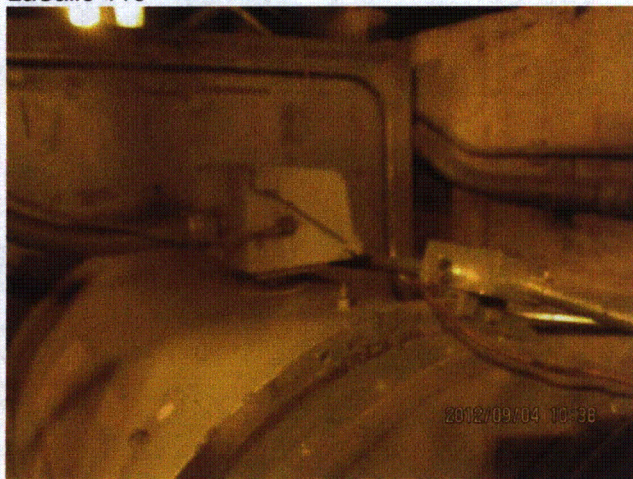
Equipment Description: HPCS PUMP ROOM COOLER VENT FAN



LaSalle 116



LaSalle 117



LaSalle 118

Status: Y N U

Seismic Walkdown Checklist (SWC)

Equipment ID No.: 1VY03C

Equipment Class: (10) Air Handlers

Equipment Description: ASSY - FAN, RHR PUMP B/C ROOM COOLING FAN

Project: LaSalle 1 SWEL

Location (Bldg, Elev, Room/Area): RB, 694.00 ft, ALL

Manufacturer/Model:

Instructions for Completing Checklist

This checklist may be used to document the results of the Seismic Walkdown of an item of equipment on the SWEL. The space below each of the following questions may be used to record the results of judgments and findings. Additional space is provided at the end of this checklist for documenting other comments.

Anchorage

1. Is anchorage configuration verification required (i.e., is the item one of the 50% of SWEL items requiring such verification)? Yes

2. Is the anchorage free of bent, broken, missing or loose hardware? Yes
Minor lack of thread engagement on one anchor judged to be acceptable.

3. Is the anchorage free of corrosion that is more than mild surface oxidation? Yes

4. Is the anchorage free of visible cracks in the concrete near the anchors? Yes
Minor shrinkage cracking in grout pad judged to be acceptable.

5. Is the anchorage configuration consistent with plant documentation? (Note: This question only applies if the item is one of the 50% for which an anchorage configuration verification is required.) Yes
Anchorage shown on drawings M-1570, Rev. B and M-1590, Sheet 8, Rev. L.

6. Based on the above anchorage evaluations, is the anchorage free of potentially adverse seismic conditions? Yes

Status: Y N U

Seismic Walkdown Checklist (SWC)

Equipment ID No.: 1VY03C

Equipment Class: (10) Air Handlers

Equipment Description: ASSY - FAN, RHR PUMP B/C ROOM COOLING FAN

Interaction Effects

7. Are soft targets free from impact by nearby equipment or structures? Yes
8. Are overhead equipment, distribution systems, ceiling tiles and lighting, and masonry block walls not likely to collapse onto the equipment? Yes
Overhead light fixtures judged to be acceptable.
9. Do attached lines have adequate flexibility to avoid damage? Yes
10. Based on the above seismic interaction evaluations, is equipment free of potentially adverse seismic interaction effects? Yes

Other Adverse Conditions

11. Have you looked for and found no adverse seismic conditions that could adversely affect the safety functions of the equipment? Yes


Comments

Seismic Walkdown Team: J. Griffith & M. Wodarczyk - 9/12/2012

Evaluated by:

 James Griffith

Date: 10/17/2012

 Michael Wodarczyk

10/17/2012

Status: Y N U

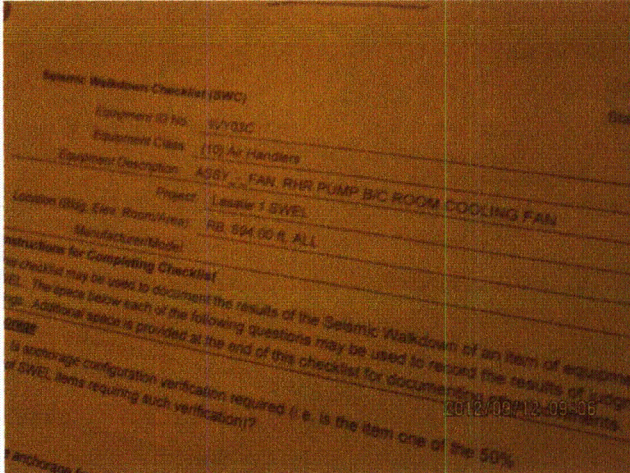
Seismic Walkdown Checklist (SWC)

Equipment ID No.: 1VY03C

Equipment Class: (10) Air Handlers

Equipment Description: ASSY - FAN, RHR PUMP B/C ROOM COOLING FAN

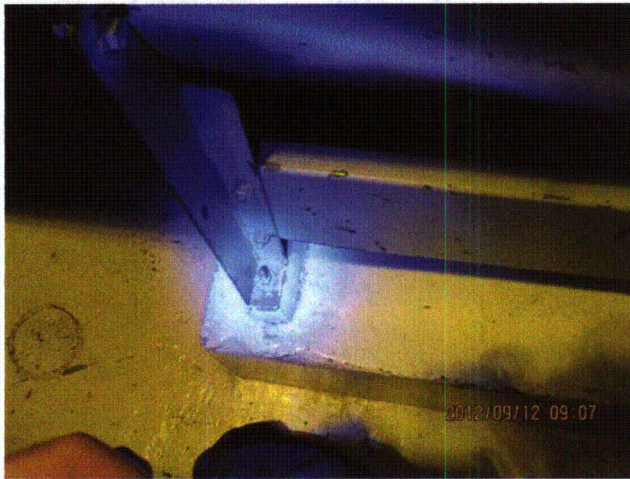
Photos



20120912-Lasalle 053



20120912-Lasalle 054



20120912-Lasalle 055



20120912-Lasalle 056

Status: Y N U

Seismic Walkdown Checklist (SWC)

Equipment ID No.: 1VY03C

Equipment Class: (10) Air Handlers

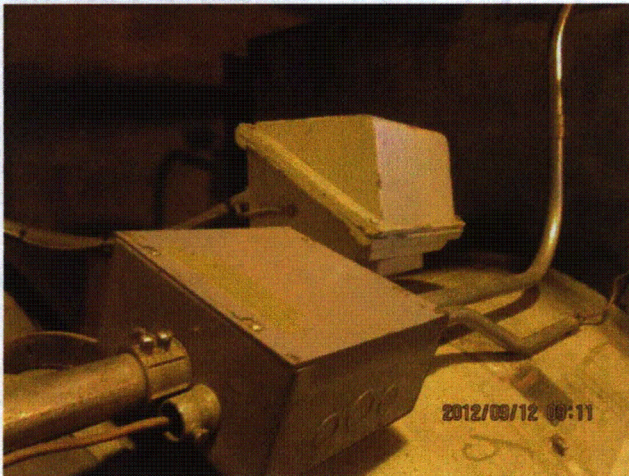
Equipment Description: ASSY - FAN, RHR PUMP B/C ROOM COOLING FAN



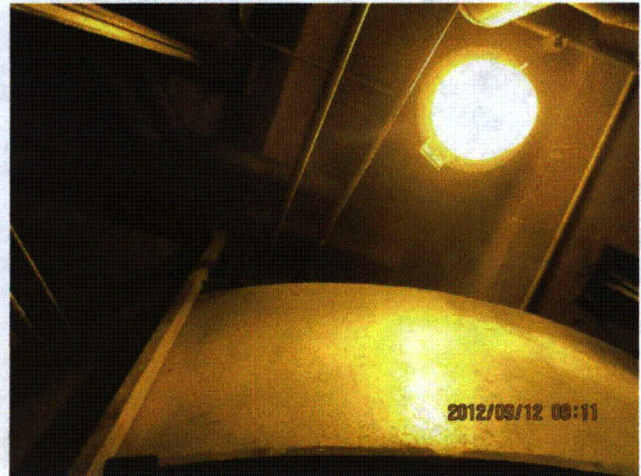
20120912-Lasalle 057



20120912-Lasalle 058



20120912-Lasalle 059



20120912-Lasalle 060

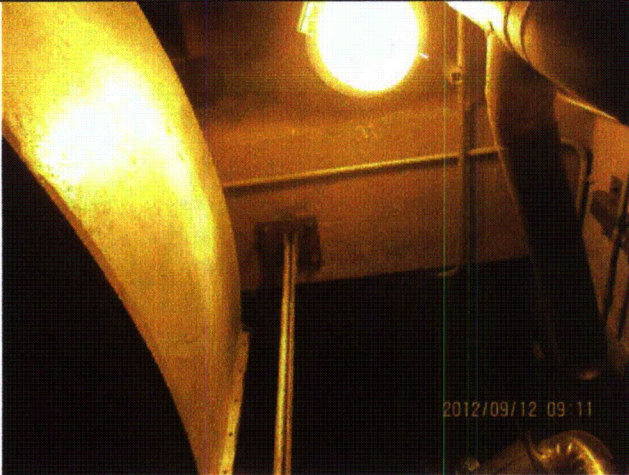
Status: Y N U

Seismic Walkdown Checklist (SWC)

Equipment ID No.: 1VY03C

Equipment Class: (10) Air Handlers

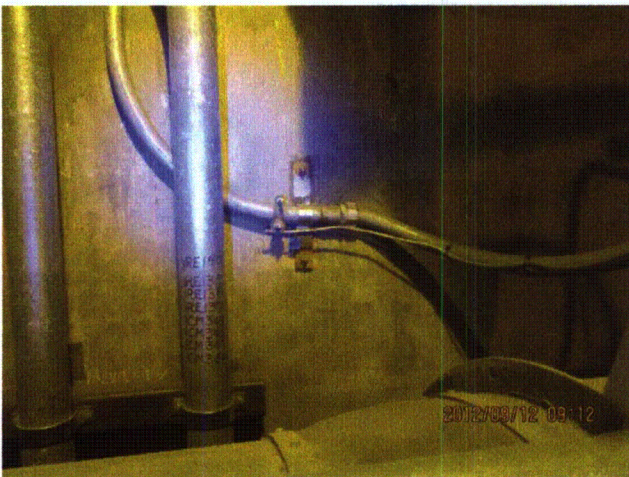
Equipment Description: ASSY - FAN, RHR PUMP B/C ROOM COOLING FAN



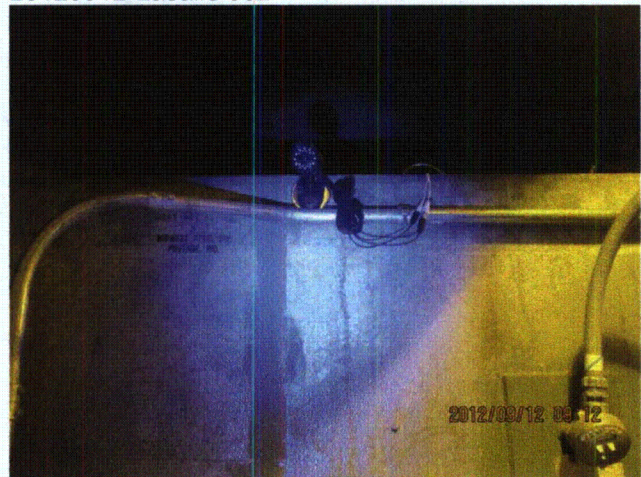
20120912-Lasalle 061



20120912-Lasalle 062



20120912-Lasalle 063



20120912-Lasalle 064

Status: Y N U

Seismic Walkdown Checklist (SWC)

Equipment ID No.: 1VY04C

Equipment Class: (10) Air Handlers

Equipment Description: ASSY - FAN, LPCS PUMP ROOM COOLING

Project: LaSalle 1 SWEL

Location (Bldg, Elev, Room/Area): RB, 694.00 ft, ALL

Manufacturer/Model:

Instructions for Completing Checklist

This checklist may be used to document the results of the Seismic Walkdown of an item of equipment on the SWEL. The space below each of the following questions may be used to record the results of judgments and findings. Additional space is provided at the end of this checklist for documenting other comments.

Anchorage

1. Is anchorage configuration verification required (i.e., is the item one of the 50% of SWEL items requiring such verification)? Yes

2. Is the anchorage free of bent, broken, missing or loose hardware? Yes

3. Is the anchorage free of corrosion that is more than mild surface oxidation? Yes

4. Is the anchorage free of visible cracks in the concrete near the anchors? Yes
Minor grout pad spalling and missing pieces of grout pad judged to be acceptable. All anchor bolts fully functional.

5. Is the anchorage configuration consistent with plant documentation? (Note: This question only applies if the item is one of the 50% for which an anchorage configuration verification is required.) Yes
Anchorage verified per drawings M-1570, Rev. B and M-1590, Sheet 8, Rev. L.

6. Based on the above anchorage evaluations, is the anchorage free of potentially adverse seismic conditions? Yes

Status: Y N U

Seismic Walkdown Checklist (SWC)

Equipment ID No.: 1VY04C

Equipment Class: (10) Air Handlers

Equipment Description: ASSY - FAN, LPCS PUMP ROOM COOLING

Interaction Effects

7. Are soft targets free from impact by nearby equipment or structures? Yes
8. Are overhead equipment, distribution systems, ceiling tiles and lighting, and masonry block walls not likely to collapse onto the equipment? Yes
9. Do attached lines have adequate flexibility to avoid damage? Yes
10. Based on the above seismic interaction evaluations, is equipment free of potentially adverse seismic interaction effects? Yes

Other Adverse Conditions

11. Have you looked for and found no adverse seismic conditions that could adversely affect the safety functions of the equipment? Yes

Comments

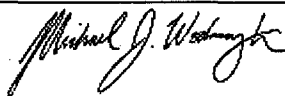
Seismic Walkdown Team: M. Etre & M. Wodarcyk - 9/17/2012

Evaluated by:



Mark Etre

Date: 10/17/2012



Michael Wodarcyk

10/17/2012

Status: Y N U

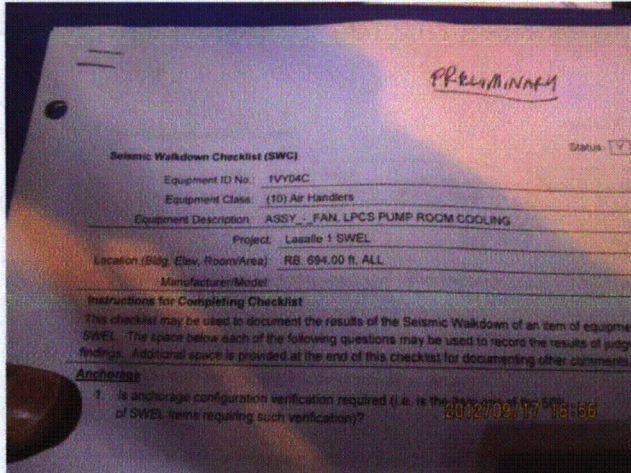
Seismic Walkdown Checklist (SWC)

Equipment ID No.: 1VY04C

Equipment Class: (10) Air Handlers

Equipment Description: ASSY - FAN, LPCS PUMP ROOM COOLING

Photos



20120917-Lasalle 305



20120917-Lasalle 306



20120917-Lasalle 307



20120917-Lasalle 308

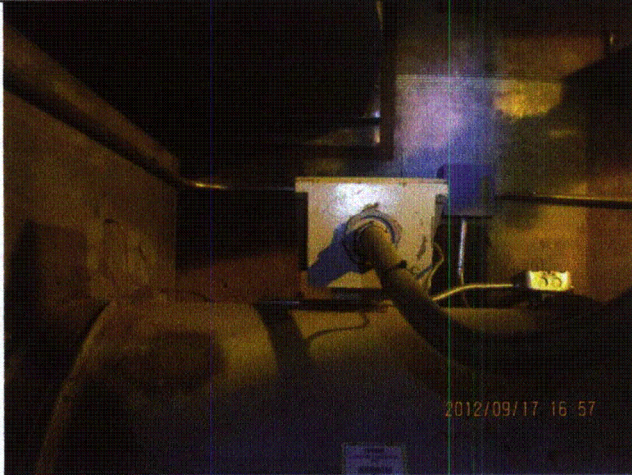
Status: Y N U

Seismic Walkdown Checklist (SWC)

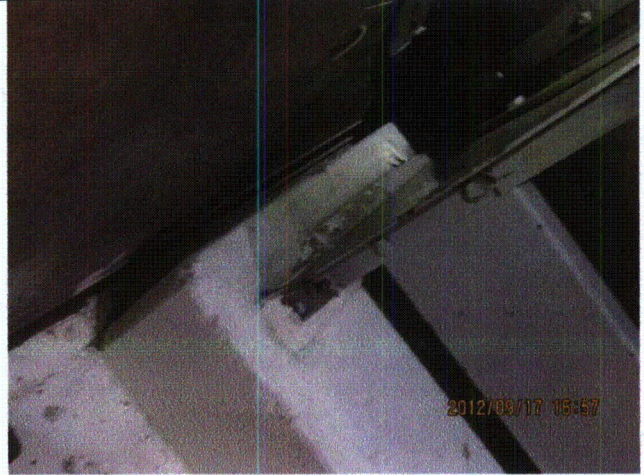
Equipment ID No.: 1VY04C

Equipment Class: (10) Air Handlers

Equipment Description: ASSY - FAN, LPCS PUMP ROOM COOLING



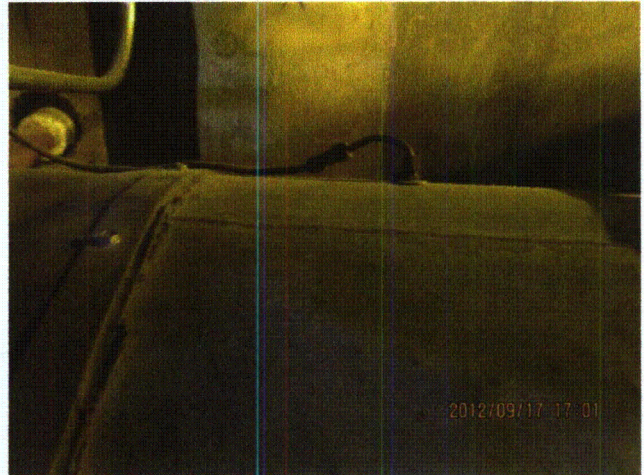
20120917-Lasalle 309



20120917-Lasalle 310



20120917-Lasalle 311



20120917-Lasalle 312

Status: Y N U

Seismic Walkdown Checklist (SWC)

Equipment ID No.: 1VY05C

Equipment Class: (10) Air Handlers

Equipment Description: ASSY - FAN, RHR WS PP A-1B CUBE SUPPLY

Project: LaSalle 1 SWEL

Location (Bldg, Elev, Room/Area): DG, 736.00 ft, ALL

Manufacturer/Model:

Instructions for Completing Checklist

This checklist may be used to document the results of the Seismic Walkdown of an item of equipment on the SWEL. The space below each of the following questions may be used to record the results of judgments and findings. Additional space is provided at the end of this checklist for documenting other comments.

Anchorage

1. Is anchorage configuration verification required (i.e., is the item one of the 50% of SWEL items requiring such verification)? No

2. Is the anchorage free of bent, broken, missing or loose hardware? Yes

3. Is the anchorage free of corrosion that is more than mild surface oxidation? Yes

4. Is the anchorage free of visible cracks in the concrete near the anchors? Yes
Spalling in grout pad. 1 anchor bolt partially exposed. Anchor is double-nutted and still functional. Judged to be acceptable. See IR 01419071.

5. Is the anchorage configuration consistent with plant documentation? (Note: This question only applies if the item is one of the 50% for which an anchorage configuration verification is required.) Not Applicable

6. Based on the above anchorage evaluations, is the anchorage free of potentially adverse seismic conditions? Yes

Status: Y N U

Seismic Walkdown Checklist (SWC)

Equipment ID No.: 1VY05C

Equipment Class: (10) Air Handlers

Equipment Description: ASSY - FAN, RHR WS PP A-1B CUBE SUPPLY

Interaction Effects

7. Are soft targets free from impact by nearby equipment or structures? Yes
8. Are overhead equipment, distribution systems, ceiling tiles and lighting, and masonry block walls not likely to collapse onto the equipment? Yes
Masonry walls in room are safety-related per drawing A-277, Rev. U.
Overhead light fixtures judged to be acceptable.
9. Do attached lines have adequate flexibility to avoid damage? Yes
10. Based on the above seismic interaction evaluations, is equipment free of potentially adverse seismic interaction effects? Yes

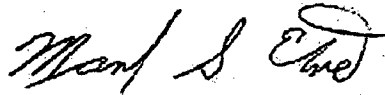
Other Adverse Conditions

11. Have you looked for and found no adverse seismic conditions that could adversely affect the safety functions of the equipment? Yes

Comments

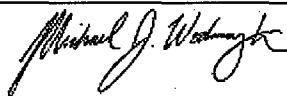
Seismic Walkdown Team: M. Etre & M. Wodarczyk - 9/18/2012

Evaluated by:



Mark Etre

Date: 10/17/2012



Michael Wodarczyk

10/17/2012

Status: Y N U

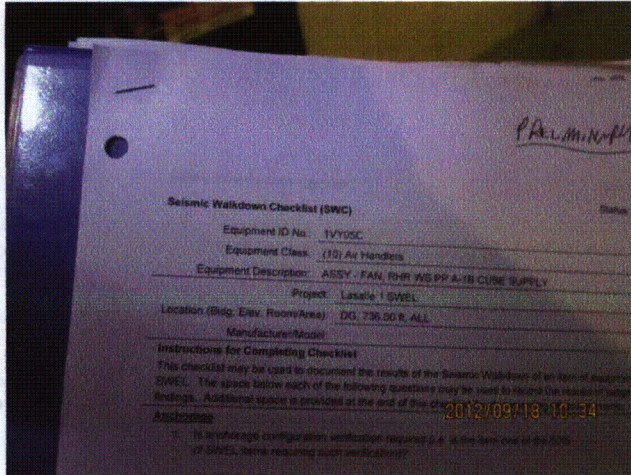
Seismic Walkdown Checklist (SWC)

Equipment ID No.: 1VY05C

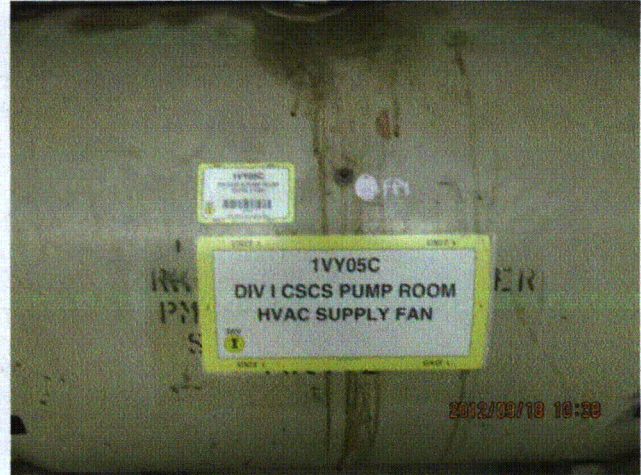
Equipment Class: (10) Air Handlers

Equipment Description: ASSY - FAN, RHR WS PP A-1B CUBE SUPPLY

Photos



20120918-Lasalle 115



20120918-Lasalle 116



20120918-Lasalle 117



20120918-Lasalle 118

Status: Y N U

Seismic Walkdown Checklist (SWC)

Equipment ID No.: 1VY05C

Equipment Class: (10) Air Handlers

Equipment Description: ASSY - FAN, RHR WS PP A-1B CUBE SUPPLY



20120918-Lasalle 120



20120918-Lasalle 121



20120918-Lasalle 122



20120918-Lasalle 124

Status: Y N U

Seismic Walkdown Checklist (SWC)

Equipment ID No.: 1VY05C

Equipment Class: (10) Air Handlers

Equipment Description: ASSY - FAN, RHR WS PP A-1B CUBE SUPPLY



20120918-Lasalle 125

Status: Y N U

Seismic Walkdown Checklist (SWC)

Equipment ID No.: 1VY06C

Equipment Class: (10) Air Handlers

Equipment Description: ASSY - FAN, RHR WS PP A-1B CUBE SUPPLY

Project: LaSalle 1 SWEL

Location (Bldg, Elev, Room/Area): DG, 736.00 ft, ALL

Manufacturer/Model: _____

Instructions for Completing Checklist

This checklist may be used to document the results of the Seismic Walkdown of an item of equipment on the SWEL. The space below each of the following questions may be used to record the results of judgments and findings. Additional space is provided at the end of this checklist for documenting other comments.

Anchorage

1. Is anchorage configuration verification required (i.e., is the item one of the 50% of SWEL items requiring such verification)? No

2. Is the anchorage free of bent, broken, missing or loose hardware? Yes

3. Is the anchorage free of corrosion that is more than mild surface oxidation? Yes

4. Is the anchorage free of visible cracks in the concrete near the anchors? Yes

5. Is the anchorage configuration consistent with plant documentation? (Note: This question only applies if the item is one of the 50% for which an anchorage configuration verification is required.) Not Applicable

6. Based on the above anchorage evaluations, is the anchorage free of potentially adverse seismic conditions? Yes

Status: Y N U

Seismic Walkdown Checklist (SWC)

Equipment ID No.: 1VY06C

Equipment Class: (10) Air Handlers

Equipment Description: ASSY - FAN, RHR WS PP A-1B CUBE SUPPLY

Interaction Effects

7. Are soft targets free from impact by nearby equipment or structures? Yes
8. Are overhead equipment, distribution systems, ceiling tiles and lighting, and masonry block walls not likely to collapse onto the equipment? Yes
Overhead light fixtures with open S-hooks. Movement during seismic event attenuated by nearby conduit supports and trays. Seismic interaction judged to not be credible. See IR 1406922.
9. Do attached lines have adequate flexibility to avoid damage? Yes
Adjacent masonry walls are safety-related per drawing A-277, Rev. U.
10. Based on the above seismic interaction evaluations, is equipment free of potentially adverse seismic interaction effects? Yes

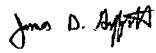
Other Adverse Conditions

11. Have you looked for and found no adverse seismic conditions that could adversely affect the safety functions of the equipment? Yes

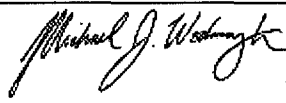
Comments

Seismic Walkdown Team: J. Griffith & M. Wodarczyk - 9/13/2012

Evaluated by:

 James Griffith

Date: 10/25/2012


Michael Wodarczyk

10/25/2012

Status: Y N U

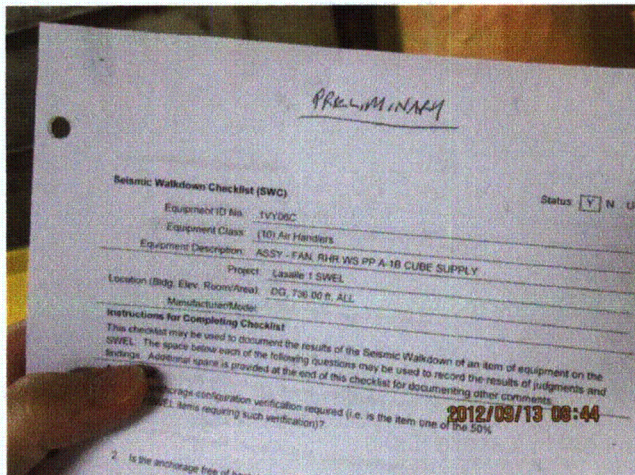
Seismic Walkdown Checklist (SWC)

Equipment ID No.: 1VY06C

Equipment Class: (10) Air Handlers

Equipment Description: ASSY - FAN, RHR WS PP A-1B CUBE SUPPLY

Photos



20120913-Lasalle 023



20120913-Lasalle 025



20120913-Lasalle 026



20120913-Lasalle 028

Status: Y N U

Seismic Walkdown Checklist (SWC)

Equipment ID No.: 1VY06C

Equipment Class: (10) Air Handlers

Equipment Description: ASSY - FAN, RHR WS PP A-1B CUBE SUPPLY



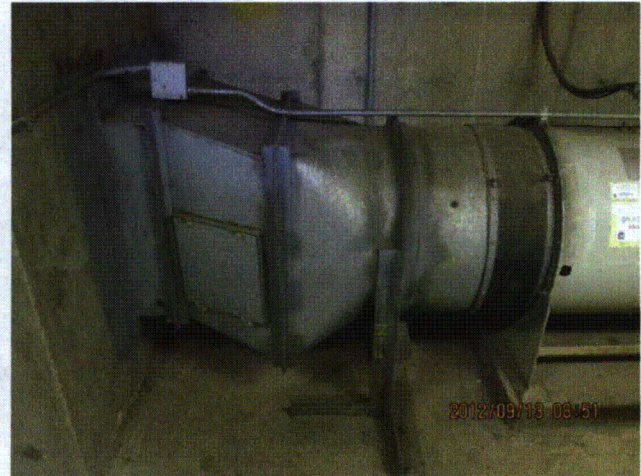
20120913-Lasalle 029



20120913-Lasalle 030



20120913-Lasalle 031



20120913-Lasalle 032

Status: Y N U

Seismic Walkdown Checklist (SWC)

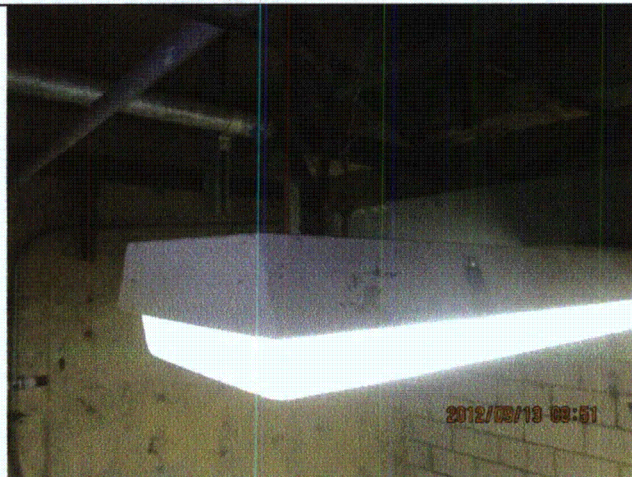
Equipment ID No.: 1VY06C

Equipment Class: (10) Air Handlers

Equipment Description: ASSY - FAN, RHR WS PP A-1B CUBE SUPPLY



20120913-Lasalle 033



20120913-Lasalle 034



20120913-Lasalle 035



20120913-Lasalle 036

Status: Y N U

Seismic Walkdown Checklist (SWC)

Equipment ID No.: 1WR029

Equipment Class: (8) Motor-Operated and Solenoid-Operated Valves

Equipment Description: DW EQUIP RBCCW SUPPLY OTBD ISOL VALVE

Project: LaSalle 1 SWEL

Location (Bldg, Elev, Room/Area): RB, 740.00 ft, ALL

Manufacturer/Model:

Instructions for Completing Checklist

This checklist may be used to document the results of the Seismic Walkdown of an item of equipment on the SWEL. The space below each of the following questions may be used to record the results of judgments and findings. Additional space is provided at the end of this checklist for documenting other comments.

Anchorage

1. Is anchorage configuration verification required (i.e., is the item one of the 50% of SWEL items requiring such verification)? No

2. Is the anchorage free of bent, broken, missing or loose hardware? Not Applicable

3. Is the anchorage free of corrosion that is more than mild surface oxidation? Not Applicable

4. Is the anchorage free of visible cracks in the concrete near the anchors? Not Applicable

5. Is the anchorage configuration consistent with plant documentation? (Note: This question only applies if the item is one of the 50% for which an anchorage configuration verification is required.) Not Applicable

6. Based on the above anchorage evaluations, is the anchorage free of potentially adverse seismic conditions? Yes

Status: Y N U

Seismic Walkdown Checklist (SWC)

Equipment ID No.: 1WR029

Equipment Class: (8) Motor-Operated and Solenoid-Operated Valves

Equipment Description: DW EQUIP RBCCW SUPPLY OTBD ISOL VALVE

Interaction Effects

7. Are soft targets free from impact by nearby equipment or structures? Yes

Overhead grating protects soft targets from impact.

8. Are overhead equipment, distribution systems, ceiling tiles and lighting, and masonry block walls not likely to collapse onto the equipment? Yes

Overhead grating protects soft targets from impact.

9. Do attached lines have adequate flexibility to avoid damage? Yes

10. Based on the above seismic interaction evaluations, is equipment free of potentially adverse seismic interaction effects? Yes

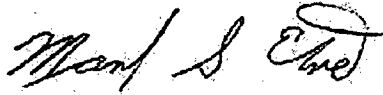
Other Adverse Conditions

11. Have you looked for and found no adverse seismic conditions that could adversely affect the safety functions of the equipment? Yes

Comments

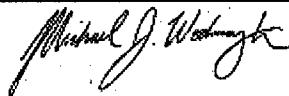
Seismic Walkdown Team: M. Etre & M. Wodarczyk - 9/17/2012

Evaluated by:



Mark Etre

Date: 10/17/2012



Michael Wodarczyk

10/17/2012

Status: Y N U

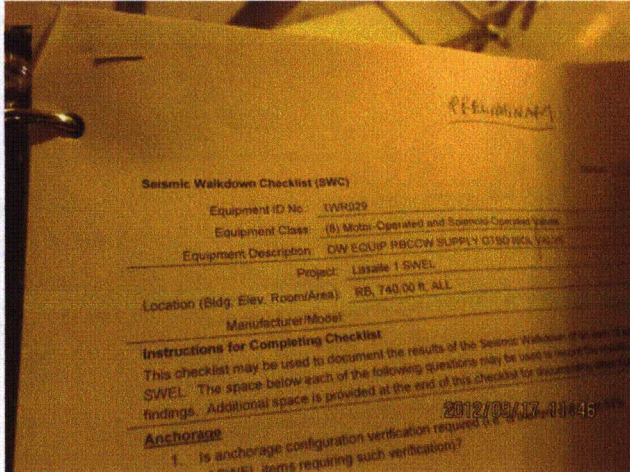
Seismic Walkdown Checklist (SWC)

Equipment ID No.: 1WR029

Equipment Class: (8) Motor-Operated and Solenoid-Operated Valves

Equipment Description: DW EQUIP RBCCW SUPPLY OTBD ISOL VALVE

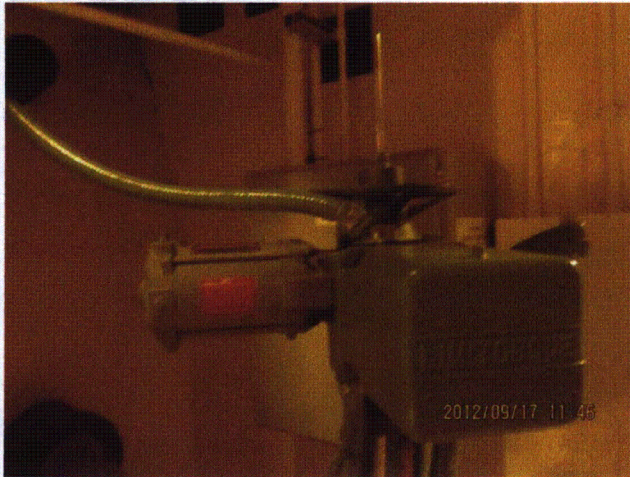
Photos



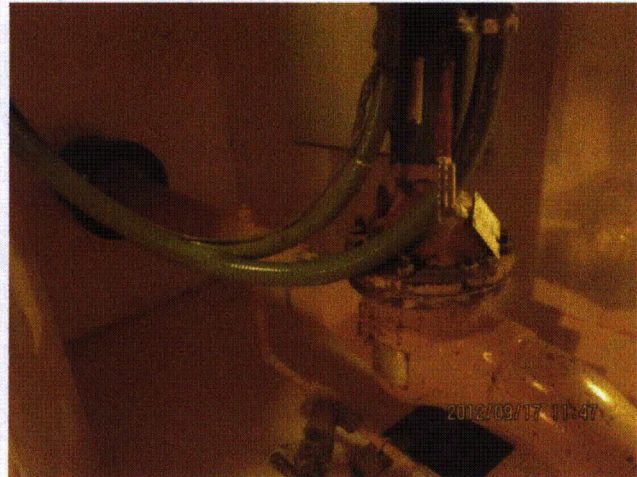
20120917-Lasalle 188



20120917-Lasalle 189



20120917-Lasalle 190



20120917-Lasalle 191

Status: Y N U

Seismic Walkdown Checklist (SWC)

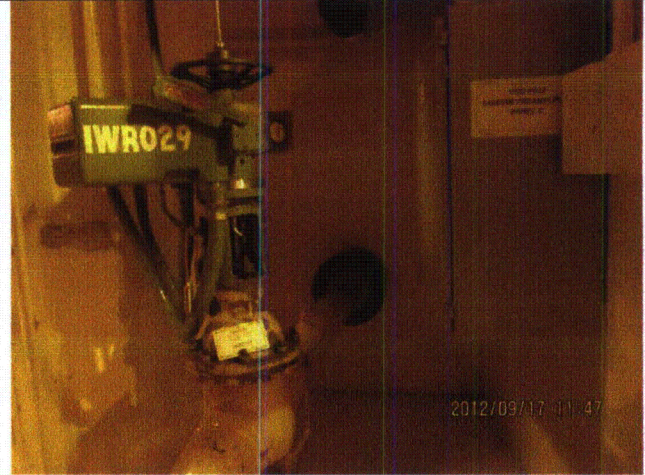
Equipment ID No.: 1WR029

Equipment Class: (8) Motor-Operated and Solenoid-Operated Valves

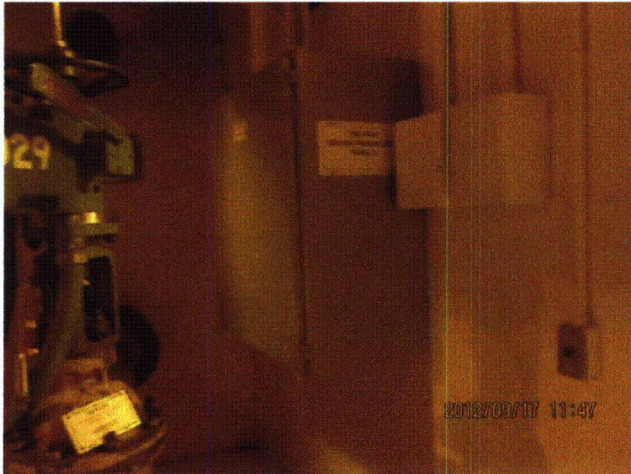
Equipment Description: DW EQUIP RBCCW SUPPLY OTBD ISOL VALVE



20120917-Lasalle 192



20120917-Lasalle 193



20120917-Lasalle 194



20120917-Lasalle 195

Status: Y N U

Seismic Walkdown Checklist (SWC)

Equipment ID No.: 1WR040

Equipment Class: (8) Motor-Operated and Solenoid-Operated Valves

Equipment Description: DW EQUIP RBCCW RTN OTBD ISOL VALVE

Project: LaSalle 1 SWEL

Location (Bldg, Elev, Room/Area): RB, 786.00 ft, ALL

Manufacturer/Model:

Instructions for Completing Checklist

This checklist may be used to document the results of the Seismic Walkdown of an item of equipment on the SWEL. The space below each of the following questions may be used to record the results of judgments and findings. Additional space is provided at the end of this checklist for documenting other comments.

Anchorage

1. Is anchorage configuration verification required (i.e., is the item one of the 50% of SWEL items requiring such verification)? No

2. Is the anchorage free of bent, broken, missing or loose hardware? Not Applicable

3. Is the anchorage free of corrosion that is more than mild surface oxidation? Not Applicable

4. Is the anchorage free of visible cracks in the concrete near the anchors? Not Applicable

5. Is the anchorage configuration consistent with plant documentation? (Note: This question only applies if the item is one of the 50% for which an anchorage configuration verification is required.) Not Applicable

6. Based on the above anchorage evaluations, is the anchorage free of potentially adverse seismic conditions? Yes

Status: Y N U

Seismic Walkdown Checklist (SWC)

Equipment ID No.: 1WR040

Equipment Class: (8) Motor-Operated and Solenoid-Operated Valves

Equipment Description: DW EQUIP RBCCW RTN OTBD ISOL VALVE

Interaction Effects

7. Are soft targets free from impact by nearby equipment or structures? Yes
8. Are overhead equipment, distribution systems, ceiling tiles and lighting, and masonry block walls not likely to collapse onto the equipment? Yes
Masonry wall is L shaped, short and has a running bond, Therefore, judged to be acceptable.
9. Do attached lines have adequate flexibility to avoid damage? Yes
10. Based on the above seismic interaction evaluations, is equipment free of potentially adverse seismic interaction effects? Yes


Other Adverse Conditions

11. Have you looked for and found no adverse seismic conditions that could adversely affect the safety functions of the equipment? Yes

Comments

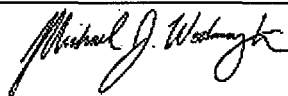
Seismic Walkdown Team: M. Etre & M. Wodarcyk - 9/17/2012

Evaluated by:



Mark Etre

Date: 10/17/2012



Michael Wodarcyk

10/17/2012

Status: Y N U

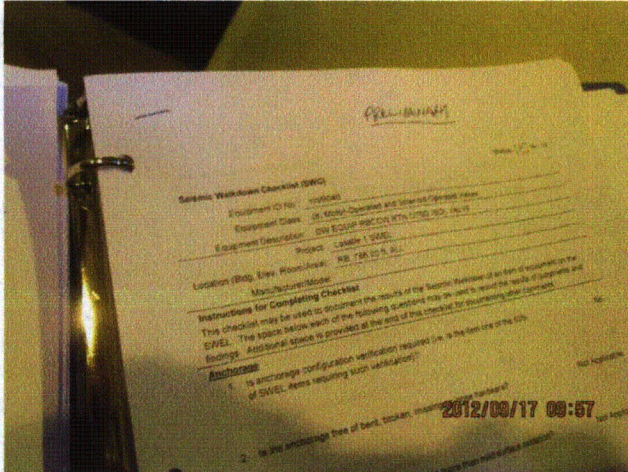
Seismic Walkdown Checklist (SWC)

Equipment ID No.: 1WR040

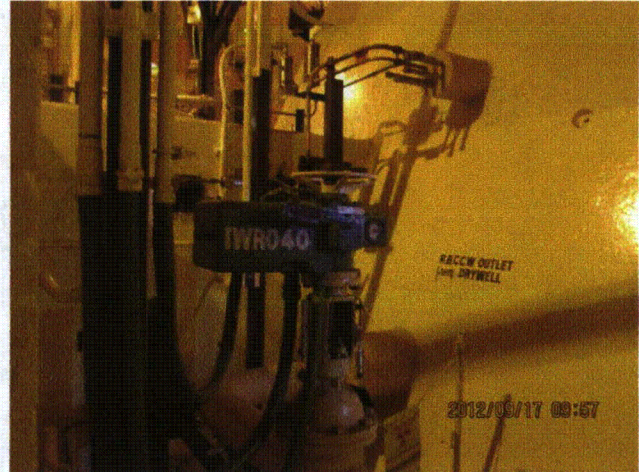
Equipment Class: (8) Motor-Operated and Solenoid-Operated Valves

Equipment Description: DW EQUIP RBCCW RTN OTBD ISOL VALVE

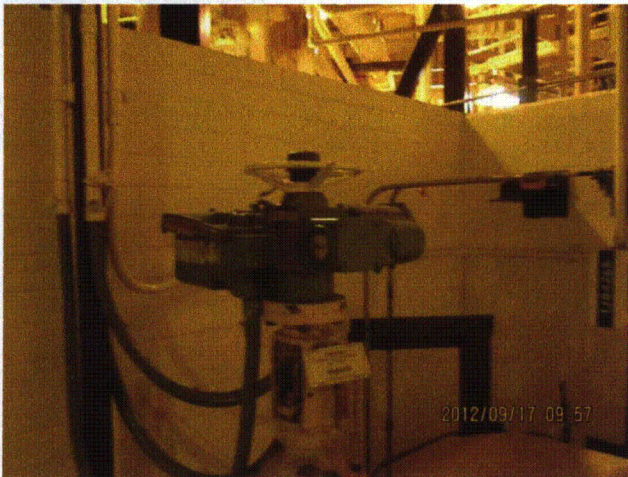
Photos



20120917-Lasalle 082



20120917-Lasalle 083



20120917-Lasalle 084