

Status: Y N U

Seismic Walkdown Checklist (SWC)

Equipment ID No.: 2DG01P

Equipment Class: (5) Horizontal Pumps

Equipment Description: 2A DG COOLING WATER PUMP

Project: LaSalle 2 SWEL

Location (Bldg, Elev, Room/Area): DG, 674.00 ft, ALL

Manufacturer/Model:

Instructions for Completing Checklist

This checklist may be used to document the results of the Seismic Walkdown of an item of equipment on the SWEL. The space below each of the following questions may be used to record the results of judgments and findings. Additional space is provided at the end of this checklist for documenting other comments.

Anchorage

1. Is anchorage configuration verification required (i.e., is the item one of the 50% of SWEL items requiring such verification)? Yes

2. Is the anchorage free of bent, broken, missing or loose hardware? Yes

3. Is the anchorage free of corrosion that is more than mild surface oxidation? Yes

4. Is the anchorage free of visible cracks in the concrete near the anchors? Yes

5. Is the anchorage configuration consistent with plant documentation? (Note: This question only applies if the item is one of the 50% for which an anchorage configuration verification is required.) Yes
Anchorage shown on drawings M-1573, Rev. G and M-1591, Sheet 3, Rev. U.

6. Based on the above anchorage evaluations, is the anchorage free of potentially adverse seismic conditions? Yes

Status: Y N U

Seismic Walkdown Checklist (SWC)

Equipment ID No.: 2DG01P

Equipment Class: (5) Horizontal Pumps

Equipment Description: 2A DG COOLING WATER PUMP

Interaction Effects

- 7. Are soft targets free from impact by nearby equipment or structures? Yes

- 8. Are overhead equipment, distribution systems, ceiling tiles and lighting, and masonry block walls not likely to collapse onto the equipment? Yes
Overhead light fixtures judged to be acceptable.

- 9. Do attached lines have adequate flexibility to avoid damage? Yes

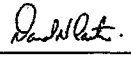
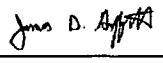
- 10. Based on the above seismic interaction evaluations, is equipment free of potentially adverse seismic interaction effects? Yes

Other Adverse Conditions

- 11. Have you looked for and found no adverse seismic conditions that could adversely affect the safety functions of the equipment? Yes

Comments

Seismic Walkdown Team: D. Carter & J. Griffith - 8/28/2012

Evaluated by:  David Carter Date: 10/17/2012
 James D. Griffith 10/17/2012

Status: Y N U

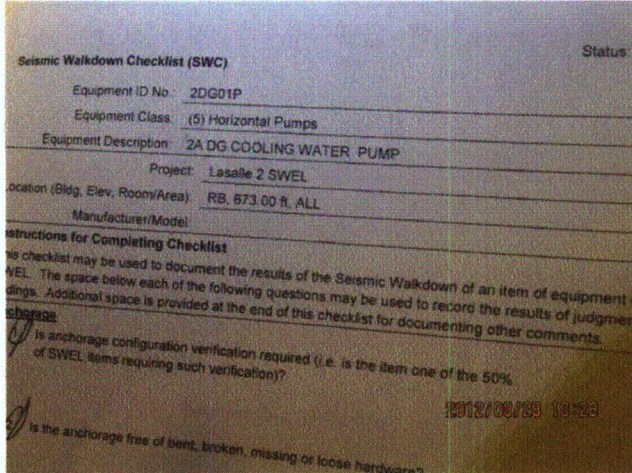
Seismic Walkdown Checklist (SWC)

Equipment ID No.: 2DG01P

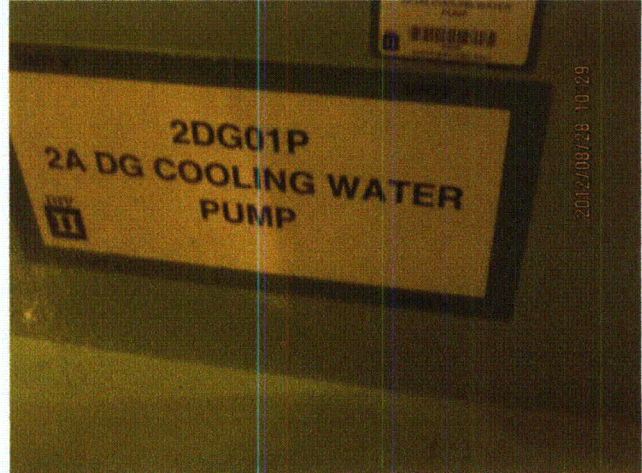
Equipment Class: (5) Horizontal Pumps

Equipment Description: 2A DG COOLING WATER PUMP

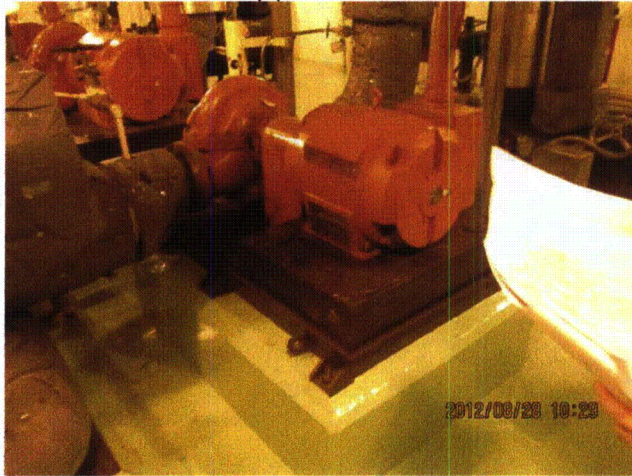
Photos



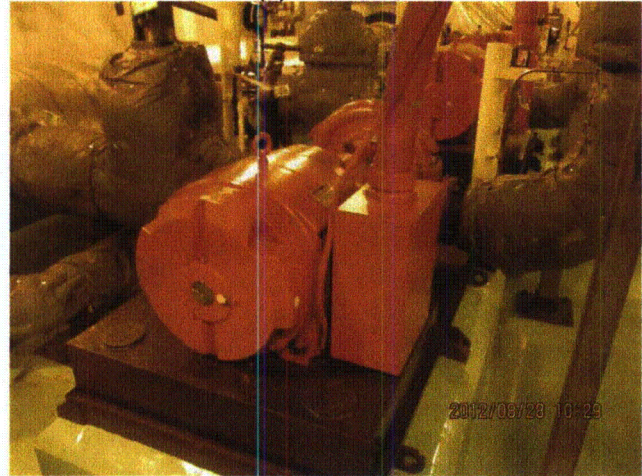
LaSalle 8-28-12 141 (2)



LaSalle 8-28-12 141 (3)



LaSalle 8-28-12 141 (4)



LaSalle 8-28-12 141 (5)

Status: Y N U

Seismic Walkdown Checklist (SWC)

Equipment ID No.: 2DG01P

Equipment Class: (5) Horizontal Pumps

Equipment Description: 2A DG COOLING WATER PUMP



LaSalle 8-28-12 141 (6)



LaSalle 8-28-12 141 (7)



LaSalle 8-28-12 141 (8)



LaSalle 8-28-12 141 (9)

Status: Y N U

Seismic Walkdown Checklist (SWC)

Equipment ID No.: 2DG01S

Equipment Class: (12) Air Compressors

Equipment Description: 2A DG STARTING AIR COMPRESSOR PACKAGE

Project: LaSalle 2 SWEL

Location (Bldg, Elev, Room/Area): DG, 710.00 ft, ALL

Manufacturer/Model:

Instructions for Completing Checklist

This checklist may be used to document the results of the Seismic Walkdown of an item of equipment on the SWEL. The space below each of the following questions may be used to record the results of judgments and findings. Additional space is provided at the end of this checklist for documenting other comments.

Anchorage

1. Is anchorage configuration verification required (i.e., is the item one of the 50% of SWEL items requiring such verification)? Yes

2. Is the anchorage free of bent, broken, missing or loose hardware? Yes

3. Is the anchorage free of corrosion that is more than mild surface oxidation? Yes

4. Is the anchorage free of visible cracks in the concrete near the anchors? Yes
Minor shrinkage cracking in floor judged to be acceptable.

5. Is the anchorage configuration consistent with plant documentation? (Note: This question only applies if the item is one of the 50% for which an anchorage configuration verification is required.) Yes
Anchorage shown on drawings M-1569, Rev. J and M-1591, Sheet 4, Rev. J.

6. Based on the above anchorage evaluations, is the anchorage free of potentially adverse seismic conditions? Yes

Status: Y N U

Seismic Walkdown Checklist (SWC)

Equipment ID No.: 2DG01S

Equipment Class: (12) Air Compressors

Equipment Description: 2A DG STARTING AIR COMPRESSOR PACKAGE

Interaction Effects

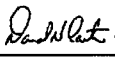
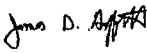
7. Are soft targets free from impact by nearby equipment or structures? Yes
Tube for 2DG08DB in contact with flexible conduit ground wire. Flexible conduits routed such that they cannot develop sufficient momentum to affect tube. Judged to be acceptable.
8. Are overhead equipment, distribution systems, ceiling tiles and lighting, and masonry block walls not likely to collapse onto the equipment? Yes
Overhead light fixtures judged to be acceptable.
Adjacent masonry column pilaster with running bond construction judged to be acceptable.
9. Do attached lines have adequate flexibility to avoid damage? Yes
10. Based on the above seismic interaction evaluations, is equipment free of potentially adverse seismic interaction effects? Yes

Other Adverse Conditions

11. Have you looked for and found no adverse seismic conditions that could adversely affect the safety functions of the equipment? Yes
Flexible 2DG08CB inner screen in contact with flexible hoses on motor. Judged to be acceptable.

Comments

Seismic Walkdown Team: D. Carter & J. Griffith - 8/28/2012

Evaluated by:  David Carter Date: 10/17/2012
 James Griffith 10/17/2012

Status: Y N U

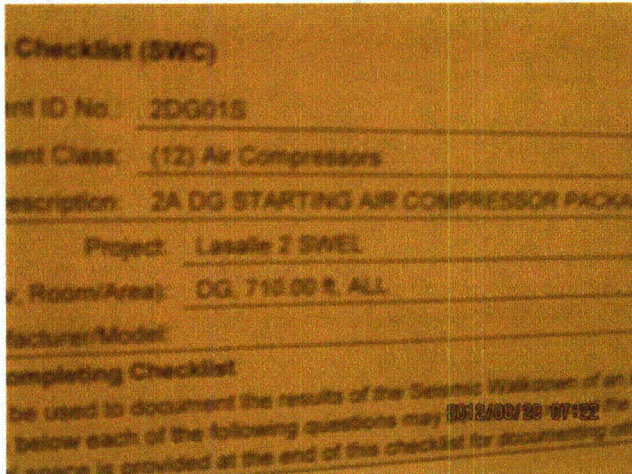
Seismic Walkdown Checklist (SWC)

Equipment ID No.: 2DG01S

Equipment Class: (12) Air Compressors

Equipment Description: 2A DG STARTING AIR COMPRESSOR PACKAGE

Photos



LaSalle 8-28-12 022 (1)



LaSalle 8-28-12 022 (10)

Status: Y N U

Seismic Walkdown Checklist (SWC)

Equipment ID No.: 2DG01S

Equipment Class: (12) Air Compressors

Equipment Description: 2A DG STARTING AIR COMPRESSOR PACKAGE



LaSalle 8-28-12 022 (11)



LaSalle 8-28-12 022 (12)

Status: Y N U

Seismic Walkdown Checklist (SWC)

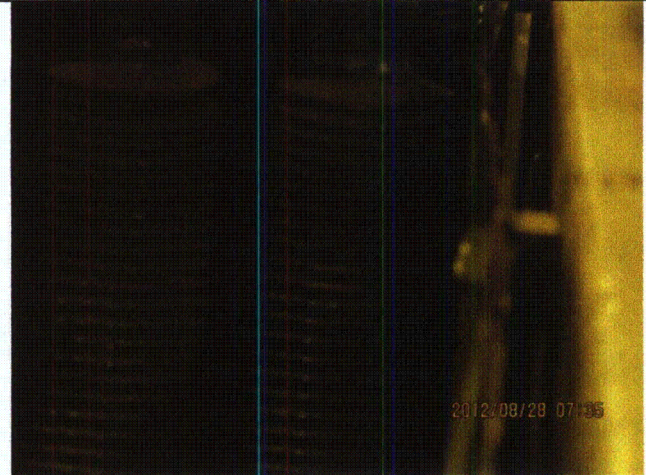
Equipment ID No.: 2DG01S

Equipment Class: (12) Air Compressors

Equipment Description: 2A DG STARTING AIR COMPRESSOR PACKAGE



LaSalle 8-28-12 022 (13)



LaSalle 8-28-12 022 (14)

Status: Y N U

Seismic Walkdown Checklist (SWC)

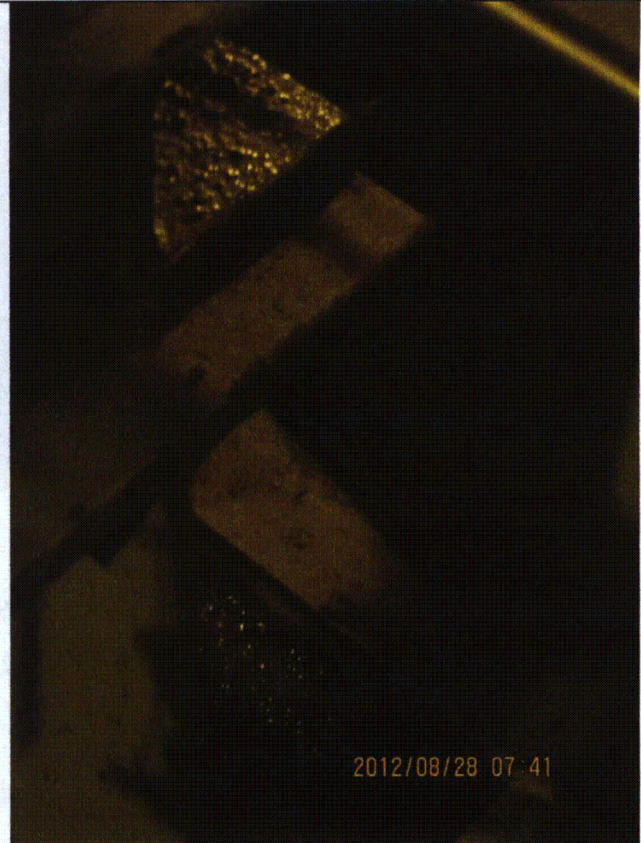
Equipment ID No.: 2DG01S

Equipment Class: (12) Air Compressors

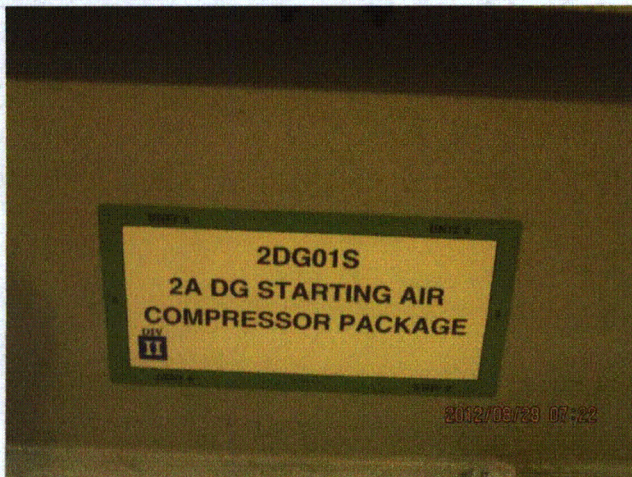
Equipment Description: 2A DG STARTING AIR COMPRESSOR PACKAGE



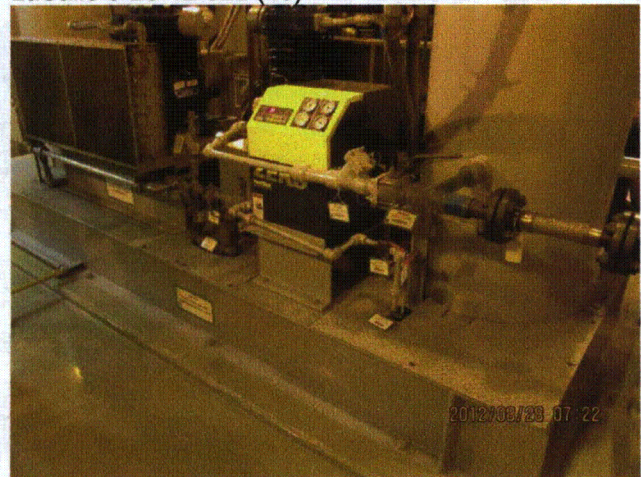
LaSalle 8-28-12 022 (15)



LaSalle 8-28-12 022 (16)



LaSalle 8-28-12 022 (2)



LaSalle 8-28-12 022 (3)

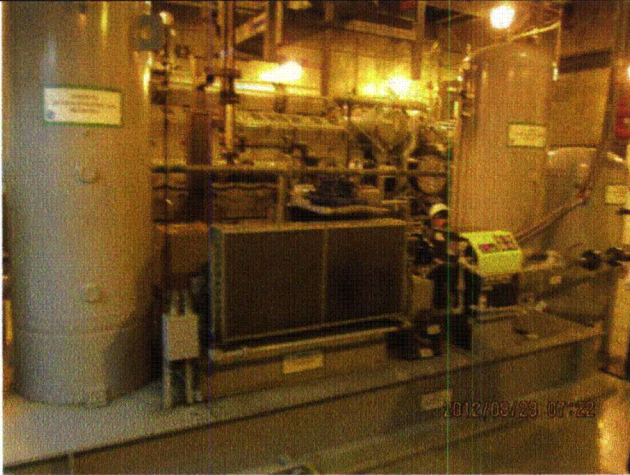
Status: Y N U

Seismic Walkdown Checklist (SWC)

Equipment ID No.: 2DG01S

Equipment Class: (12) Air Compressors

Equipment Description: 2A DG STARTING AIR COMPRESSOR PACKAGE



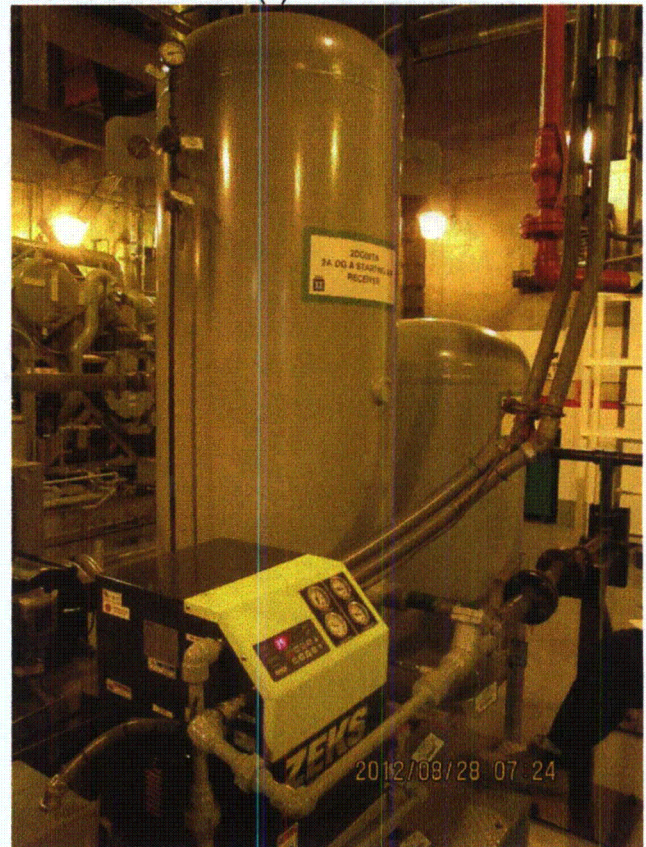
LaSalle 8-28-12 022 (4)



LaSalle 8-28-12 022 (5)



LaSalle 8-28-12 022 (6)



LaSalle 8-28-12 022 (7)

Status: Y N U

Seismic Walkdown Checklist (SWC)

Equipment ID No.: 2DG01S

Equipment Class: (12) Air Compressors

Equipment Description: 2A DG STARTING AIR COMPRESSOR PACKAGE



LaSalle 8-28-12 022 (8)



LaSalle 8-28-12 022 (9)

Status: Y N U

Seismic Walkdown Checklist (SWC)

Equipment ID No.: 2DG02JA

Equipment Class: (20) Instrumentation and Control Panels and Cabinets

Equipment Description: 2A DG A GENERATOR CONTROL PANEL

Project: LaSalle 2 SWEL

Location (Bldg, Elev, Room/Area): DG, 710.00 ft, ALL

Manufacturer/Model:

Instructions for Completing Checklist

This checklist may be used to document the results of the Seismic Walkdown of an item of equipment on the SWEL. The space below each of the following questions may be used to record the results of judgments and findings. Additional space is provided at the end of this checklist for documenting other comments.

Anchorage

1. Is anchorage configuration verification required (i.e., is the item one of the 50% of SWEL items requiring such verification)? Yes

2. Is the anchorage free of bent, broken, missing or loose hardware? Yes

3. Is the anchorage free of corrosion that is more than mild surface oxidation? Yes

4. Is the anchorage free of visible cracks in the concrete near the anchors? Yes
Minor shrinkage cracking in floor judged to be acceptable.

5. Is the anchorage configuration consistent with plant documentation? (Note: This question only applies if the item is one of the 50% for which an anchorage configuration verification is required.) Yes
Anchorage shown on drawings 1E-2-3433, Rev. AP and 1E-2-3437, Rev. AE.

6. Based on the above anchorage evaluations, is the anchorage free of potentially adverse seismic conditions? Yes

Status: Y N U

Seismic Walkdown Checklist (SWC)

Equipment ID No.: 2DG02JA

Equipment Class: (20) Instrumentation and Control Panels and Cabinets

Equipment Description: 2A DG A GENERATOR CONTROL PANEL

Interaction Effects

7. Are soft targets free from impact by nearby equipment or structures? Yes

Panels 2DG02JA, 2DG02JB, and 2DG03J are bolted together.

8. Are overhead equipment, distribution systems, ceiling tiles and lighting, and masonry block walls not likely to collapse onto the equipment? Yes

Overhead light fixtures judged to be acceptable.

Adjacent masonry column pilaster with running bond construction judged to be acceptable.

9. Do attached lines have adequate flexibility to avoid damage? Yes

10. Based on the above seismic interaction evaluations, is equipment free of potentially adverse seismic interaction effects? Yes


Other Adverse Conditions

11. Have you looked for and found no adverse seismic conditions that could adversely affect the safety functions of the equipment? Yes

All panel doors were opened. No adverse seismic conditions were observed.

Comments

Seismic Walkdown Team: D. Carter & J. Griffith - 8/27/2012

Evaluated by:  David Carter

Date: 10/17/2012

 James D. Griffith

10/17/2012

Status: Y N U

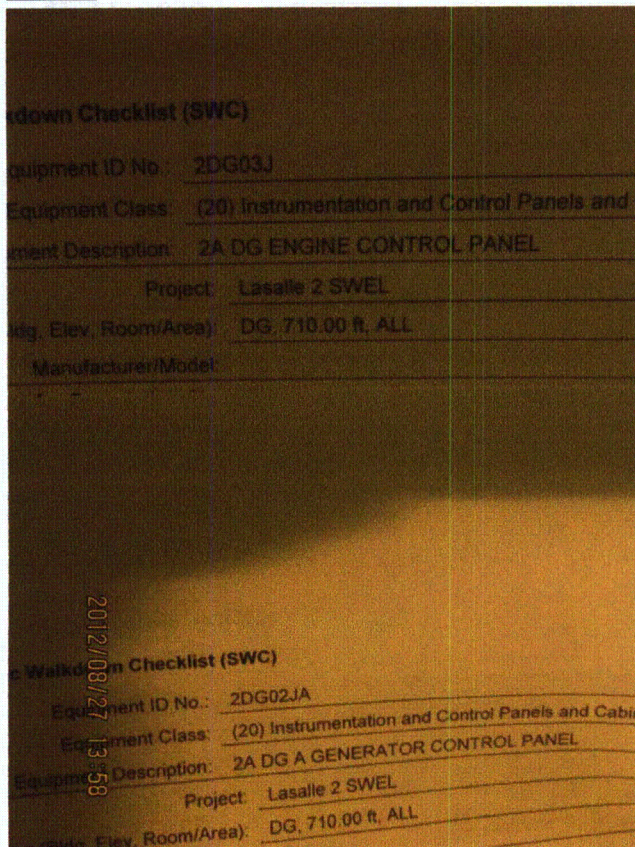
Seismic Walkdown Checklist (SWC)

Equipment ID No.: 2DG02JA

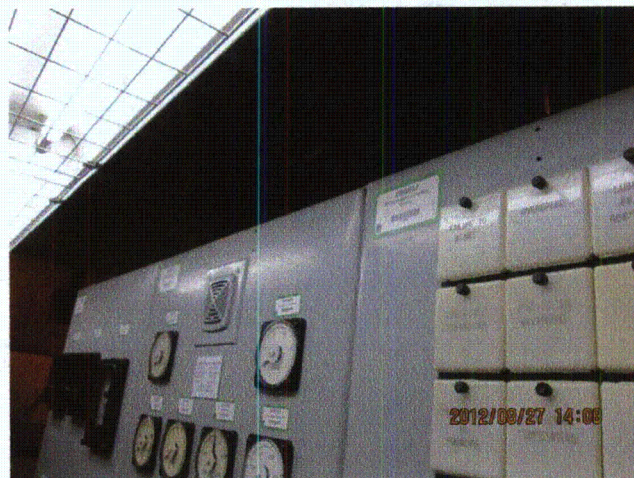
Equipment Class: (20) Instrumentation and Control Panels and Cabinets

Equipment Description: 2A DG A GENERATOR CONTROL PANEL

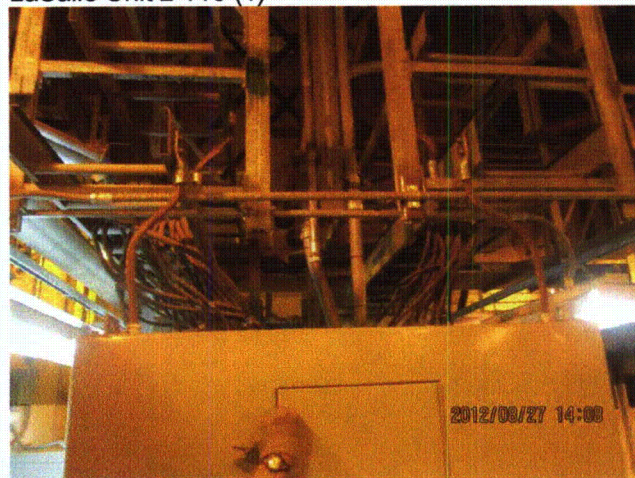
Photos



LaSalle Unit 2 116 (1)



LaSalle Unit 2 116 (10)



LaSalle Unit 2 116 (11)



LaSalle Unit 2 116 (12)

Status: Y N U

Seismic Walkdown Checklist (SWC)

Equipment ID No.: 2DG02JA

Equipment Class: (20) Instrumentation and Control Panels and Cabinets

Equipment Description: 2A DG A GENERATOR CONTROL PANEL



LaSalle Unit 2 116 (13)



LaSalle Unit 2 116 (14)

Status: Y N U

Seismic Walkdown Checklist (SWC)

Equipment ID No.: 2DG02JA

Equipment Class: (20) Instrumentation and Control Panels and Cabinets

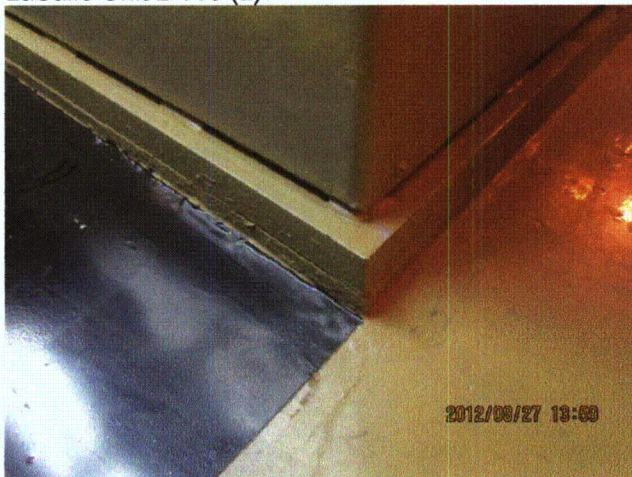
Equipment Description: 2A DG A GENERATOR CONTROL PANEL



LaSalle Unit 2 116 (2)



LaSalle Unit 2 116 (3)



LaSalle Unit 2 116 (4)



LaSalle Unit 2 116 (5)

Status: Y N U

Seismic Walkdown Checklist (SWC)

Equipment ID No.: 2DG02JA

Equipment Class: (20) Instrumentation and Control Panels and Cabinets

Equipment Description: 2A DG A GENERATOR CONTROL PANEL



LaSalle Unit 2 116 (6)



LaSalle Unit 2 116 (7)



LaSalle Unit 2 116 (8)



LaSalle Unit 2 116 (9)

Status: Y N U

Seismic Walkdown Checklist (SWC)

Equipment ID No.: 2DG03J

Equipment Class: (20) Instrumentation and Control Panels and Cabinets

Equipment Description: 2A DG ENGINE CONTROL PANEL

Project: LaSalle 2 SWEL

Location (Bldg, Elev, Room/Area): DG, 710.00 ft, ALL

Manufacturer/Model:

Instructions for Completing Checklist

This checklist may be used to document the results of the Seismic Walkdown of an item of equipment on the SWEL. The space below each of the following questions may be used to record the results of judgments and findings. Additional space is provided at the end of this checklist for documenting other comments.

Anchorage

1. Is anchorage configuration verification required (i.e., is the item one of the 50% of SWEL items requiring such verification)? Yes

2. Is the anchorage free of bent, broken, missing or loose hardware? Yes

3. Is the anchorage free of corrosion that is more than mild surface oxidation? Yes

4. Is the anchorage free of visible cracks in the concrete near the anchors? Yes
Minor shrinkage cracking in floor judged to be acceptable.

5. Is the anchorage configuration consistent with plant documentation? (Note: This question only applies if the item is one of the 50% for which an anchorage configuration verification is required.) Yes
Anchorage shown on drawings 1E-2-3433, Rev. AP and 1E-2-3437, Rev. AE.

6. Based on the above anchorage evaluations, is the anchorage free of potentially adverse seismic conditions? Yes

Status: Y N U

Seismic Walkdown Checklist (SWC)

Equipment ID No.: 2DG03J

Equipment Class: (20) Instrumentation and Control Panels and Cabinets

Equipment Description: 2A DG ENGINE CONTROL PANEL

Interaction Effects

7. Are soft targets free from impact by nearby equipment or structures? Yes

Panels 2DG02JA, 2DG02JB, and 2DG03J are bolted together.

8. Are overhead equipment, distribution systems, ceiling tiles and lighting, and masonry block walls not likely to collapse onto the equipment? Yes

Overhead light fixtures judged to be acceptable.

Adjacent masonry column pilaster with running bond construction judged to be acceptable.

9. Do attached lines have adequate flexibility to avoid damage? Yes

10. Based on the above seismic interaction evaluations, is equipment free of potentially adverse seismic interaction effects? Yes

Other Adverse Conditions

11. Have you looked for and found no adverse seismic conditions that could adversely affect the safety functions of the equipment? Yes

All panel doors were opened. No adverse seismic conditions were observed.

Comments

Seismic Walkdown Team: D. Carter & J. Griffith - 8/27/2012

Evaluated by:  David Carter

Date: 10/17/2012

 James D. Griffith

10/17/2012

Status: Y N U

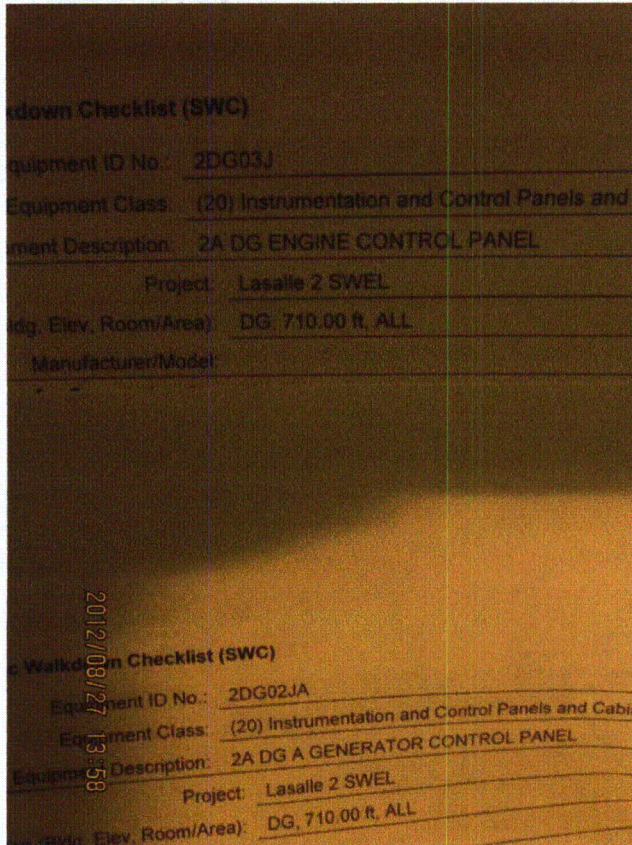
Seismic Walkdown Checklist (SWC)

Equipment ID No.: 2DG03J

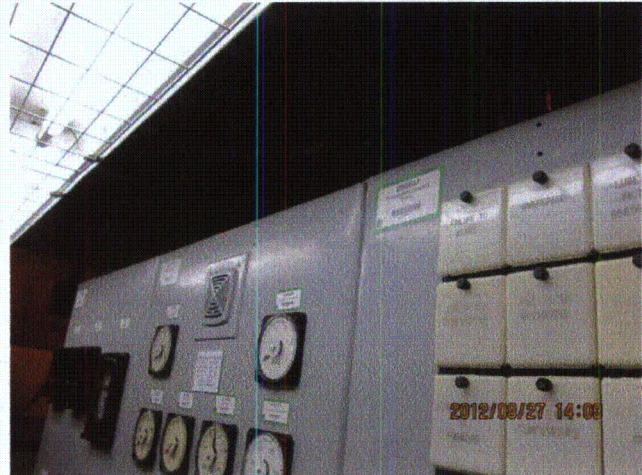
Equipment Class: (20) Instrumentation and Control Panels and Cabinets

Equipment Description: 2A DG ENGINE CONTROL PANEL

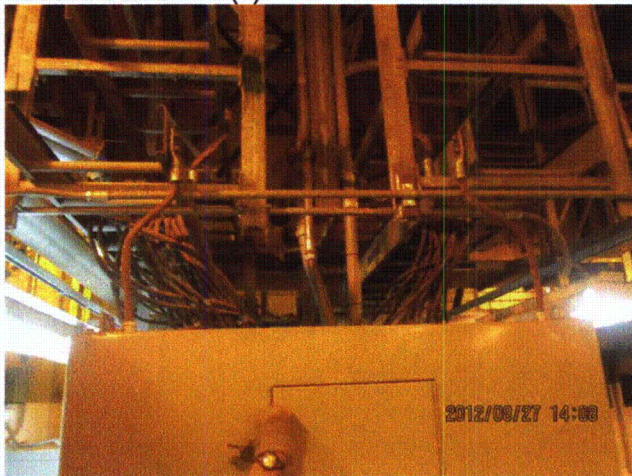
Photos



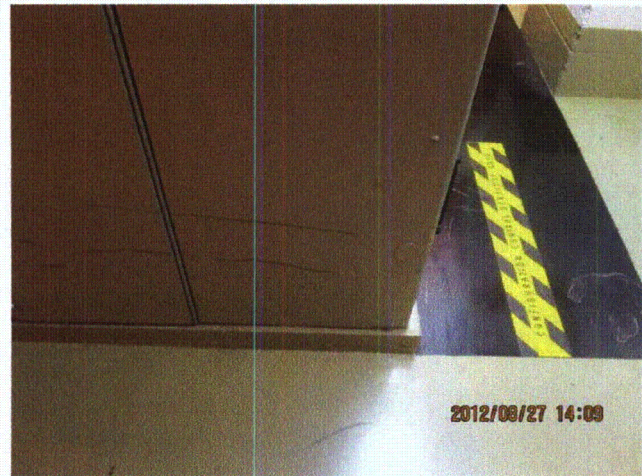
LaSalle Unit 2 116 (1)



LaSalle Unit 2 116 (10)



LaSalle Unit 2 116 (11)



LaSalle Unit 2 116 (12)

Status: Y N U

Seismic Walkdown Checklist (SWC)

Equipment ID No.: 2DG03J

Equipment Class: (20) Instrumentation and Control Panels and Cabinets

Equipment Description: 2A DG ENGINE CONTROL PANEL



LaSalle Unit 2 116 (13)



LaSalle Unit 2 116 (14)

Status: Y N U

Seismic Walkdown Checklist (SWC)

Equipment ID No.: 2DG03J

Equipment Class: (20) Instrumentation and Control Panels and Cabinets

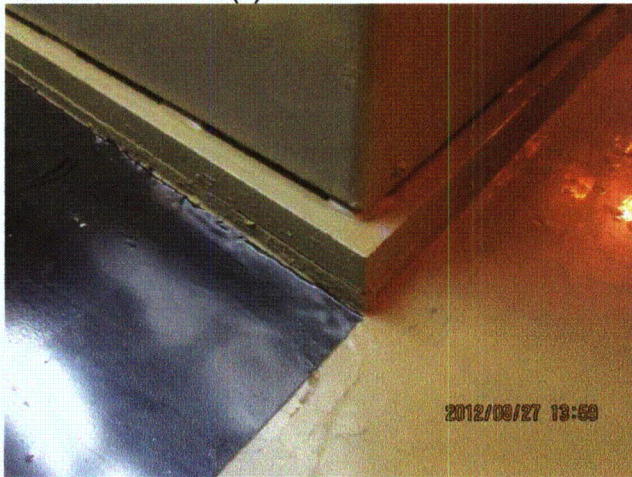
Equipment Description: 2A DG ENGINE CONTROL PANEL



LaSalle Unit 2 116 (2)



LaSalle Unit 2 116 (3)



LaSalle Unit 2 116 (4)



LaSalle Unit 2 116 (5)

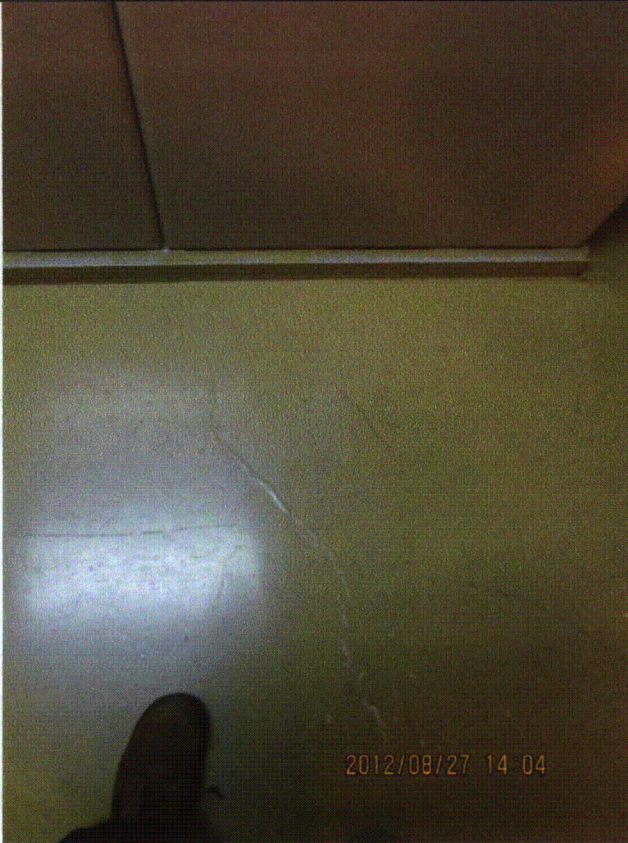
Status: Y N U

Seismic Walkdown Checklist (SWC)

Equipment ID No.: 2DG03J

Equipment Class: (20) Instrumentation and Control Panels and Cabinets

Equipment Description: 2A DG ENGINE CONTROL PANEL



LaSalle Unit 2 116 (6)



LaSalle Unit 2 116 (7)



LaSalle Unit 2 116 (8)



LaSalle Unit 2 116 (9)

Status: Y N U

Seismic Walkdown Checklist (SWC)

Equipment ID No.: 2DG061A

Equipment Class: (7) Fluid-Operated Valves

Equipment Description: 2A DG A/C STARTING AIR MOTORS SUPPLY CONTROL VALVE

Project: LaSalle 2 SWEL

Location (Bldg, Elev, Room/Area): DG, 710.00 ft, ALL

Manufacturer/Model:

Instructions for Completing Checklist

This checklist may be used to document the results of the Seismic Walkdown of an item of equipment on the SWEL. The space below each of the following questions may be used to record the results of judgments and findings. Additional space is provided at the end of this checklist for documenting other comments.

Anchorage

1. Is anchorage configuration verification required (i.e., is the item one of the 50% of SWEL items requiring such verification)? No

2. Is the anchorage free of bent, broken, missing or loose hardware? Not Applicable

3. Is the anchorage free of corrosion that is more than mild surface oxidation? Not Applicable

4. Is the anchorage free of visible cracks in the concrete near the anchors? Not Applicable

5. Is the anchorage configuration consistent with plant documentation? (Note: This question only applies if the item is one of the 50% for which an anchorage configuration verification is required.) Not Applicable

6. Based on the above anchorage evaluations, is the anchorage free of potentially adverse seismic conditions? Yes

Status: Y N U

Seismic Walkdown Checklist (SWC)

Equipment ID No.: 2DG061A

Equipment Class: (7) Fluid-Operated Valves

Equipment Description: 2A DG A/C STARTING AIR MOTORS SUPPLY CONTROL VALVE

Interaction Effects

7. Are soft targets free from impact by nearby equipment or structures? Yes
8. Are overhead equipment, distribution systems, ceiling tiles and lighting, and masonry block walls not likely to collapse onto the equipment? Yes
Overhead light fixtures judged to be acceptable.
9. Do attached lines have adequate flexibility to avoid damage? Yes
Valve and associated lines all mounted to DG skid.
10. Based on the above seismic interaction evaluations, is equipment free of potentially adverse seismic interaction effects? Yes

Other Adverse Conditions

11. Have you looked for and found no adverse seismic conditions that could adversely affect the safety functions of the equipment? Yes

Comments

Seismic Walkdown Team: D. Carter & J. Griffith - 8/28/2012

Evaluated by: *David Carter* David Carter Date: 10/17/2012
James D. Griffith James Griffith 10/17/2012

Status: Y N U

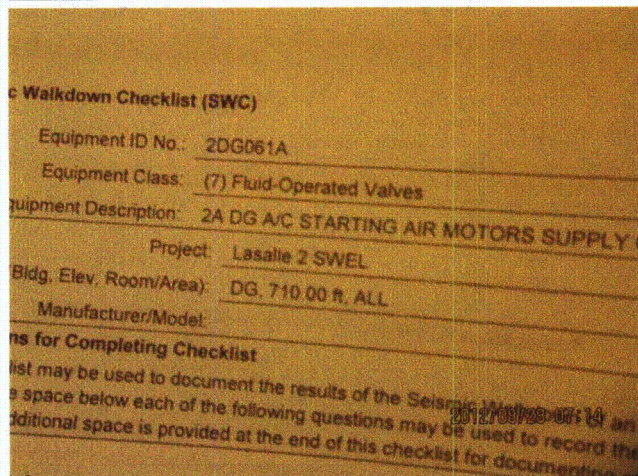
Seismic Walkdown Checklist (SWC)

Equipment ID No.: 2DG061A

Equipment Class: (7) Fluid-Operated Valves

Equipment Description: 2A DG A/C STARTING AIR MOTORS SUPPLY CONTROL VALVE

Photos



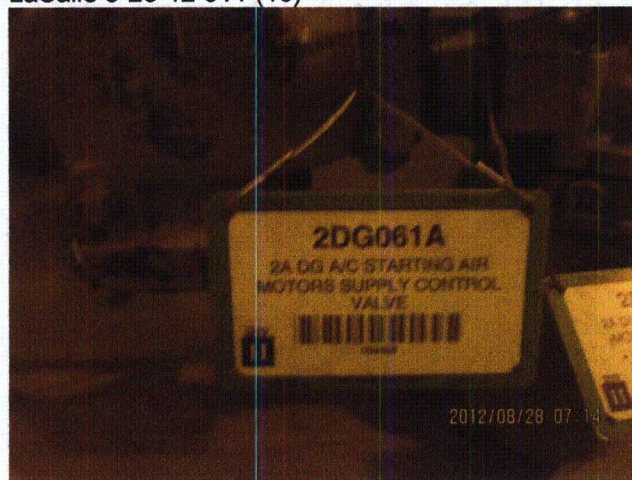
LaSalle 8-28-12 011 (1)



LaSalle 8-28-12 011 (10)



LaSalle 8-28-12 011 (11)



LaSalle 8-28-12 011 (2)

Status: Y N U

Seismic Walkdown Checklist (SWC)

Equipment ID No.: 2DG061A

Equipment Class: (7) Fluid-Operated Valves

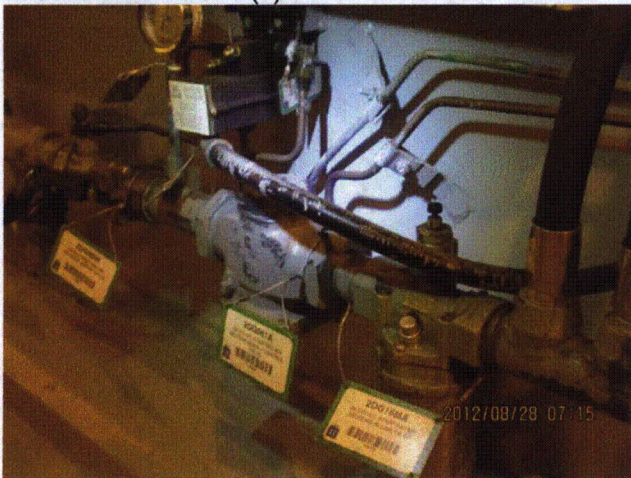
Equipment Description: 2A DG A/C STARTING AIR MOTORS SUPPLY CONTROL VALVE



LaSalle 8-28-12 011 (3)



LaSalle 8-28-12 011 (4)



LaSalle 8-28-12 011 (5)



LaSalle 8-28-12 011 (6)

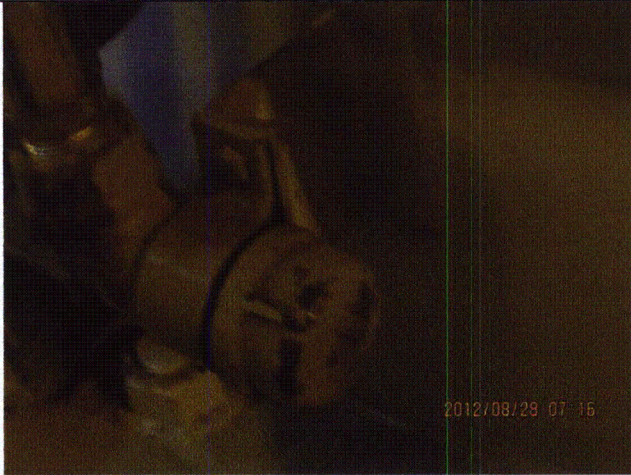
Status: Y N U

Seismic Walkdown Checklist (SWC)

Equipment ID No.: 2DG061A

Equipment Class: (7) Fluid-Operated Valves

Equipment Description: 2A DG A/C STARTING AIR MOTORS SUPPLY CONTROL VALVE



LaSalle 8-28-12 011 (7)



LaSalle 8-28-12 011 (8)



LaSalle 8-28-12 011 (9)

Status: Y N U

Seismic Walkdown Checklist (SWC)

Equipment ID No.: 2DO01P

Equipment Class: (5) Horizontal Pumps

Equipment Description: PUMP, DIESEL OILTRANSFER

Project: LaSalle 2 SWEL

Location (Bldg, Elev, Room/Area): DG, 674.00 ft, ALL

Manufacturer/Model:

Instructions for Completing Checklist

This checklist may be used to document the results of the Seismic Walkdown of an item of equipment on the SWEL. The space below each of the following questions may be used to record the results of judgments and findings. Additional space is provided at the end of this checklist for documenting other comments.

Anchorage

1. Is anchorage configuration verification required (i.e., is the item one of the 50% of SWEL items requiring such verification)? Yes

2. Is the anchorage free of bent, broken, missing or loose hardware? Yes
Minor lack of thread engagement at all anchors judged to be acceptable.

3. Is the anchorage free of corrosion that is more than mild surface oxidation? Yes

4. Is the anchorage free of visible cracks in the concrete near the anchors? Yes
Minor spalling in concrete at edge of pump base judged to be acceptable.
Minor shrinkage cracking in floor judged to be acceptable.

5. Is the anchorage configuration consistent with plant documentation? (Note: This question only applies if the item is one of the 50% for which an anchorage configuration verification is required.) Yes
Anchorage shown on drawing M-1573, Rev. G and M-1591, Sheet 5, Rev. E.

6. Based on the above anchorage evaluations, is the anchorage free of potentially adverse seismic conditions? Yes

Status: Y N U

Seismic Walkdown Checklist (SWC)

Equipment ID No.: 2D001P

Equipment Class: (5) Horizontal Pumps

Equipment Description: PUMP, DIESEL OILTRANSFER

Interaction Effects

7. Are soft targets free from impact by nearby equipment or structures? Yes
8. Are overhead equipment, distribution systems, ceiling tiles and lighting, and masonry block walls not likely to collapse onto the equipment? Yes
Overhead light fixtures judged to be acceptable.
9. Do attached lines have adequate flexibility to avoid damage? Yes
10. Based on the above seismic interaction evaluations, is equipment free of potentially adverse seismic interaction effects? Yes

Other Adverse Conditions

11. Have you looked for and found no adverse seismic conditions that could adversely affect the safety functions of the equipment? Yes

Comments

Seismic Walkdown Team: D. Carter & J. Griffith - 8/28/2012

Evaluated by: *David Carter* David Carter Date: 10/17/2012
James D. Griffith James Griffith 10/17/2012

Status: Y N U

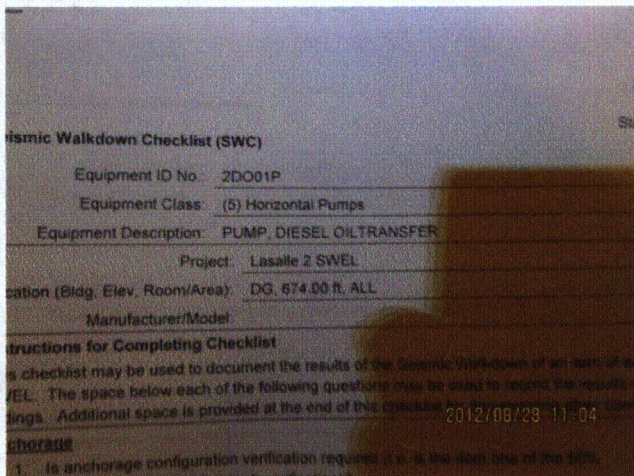
Seismic Walkdown Checklist (SWC)

Equipment ID No.: 2D001P

Equipment Class: (5) Horizontal Pumps

Equipment Description: PUMP, DIESEL OILTRANSFER

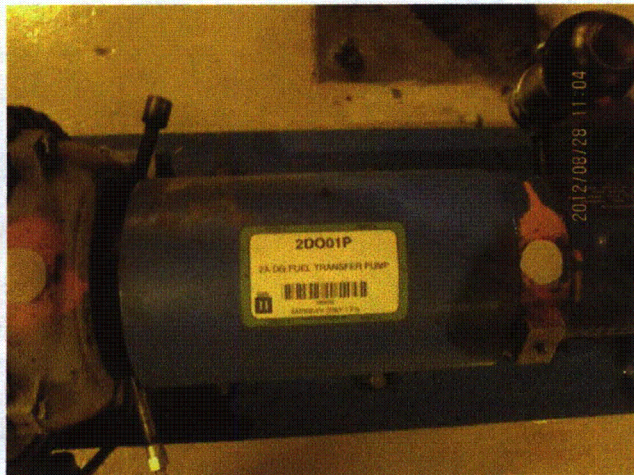
Photos



LaSalle 8-28-12 164 (1)



LaSalle 8-28-12 164 (10)



LaSalle 8-28-12 164 (2)



LaSalle 8-28-12 164 (3)

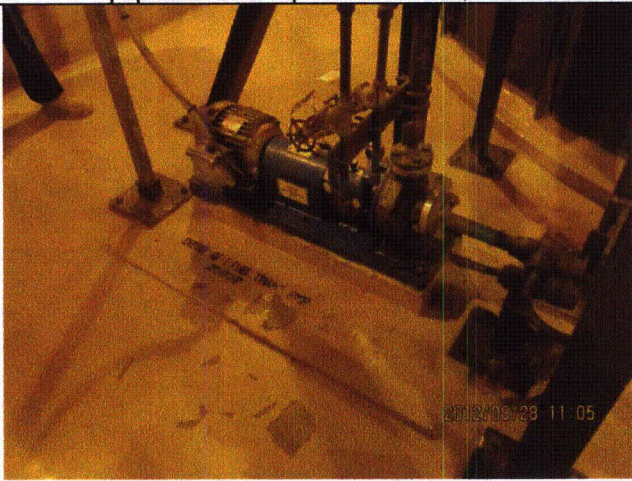
Status: Y N U

Seismic Walkdown Checklist (SWC)

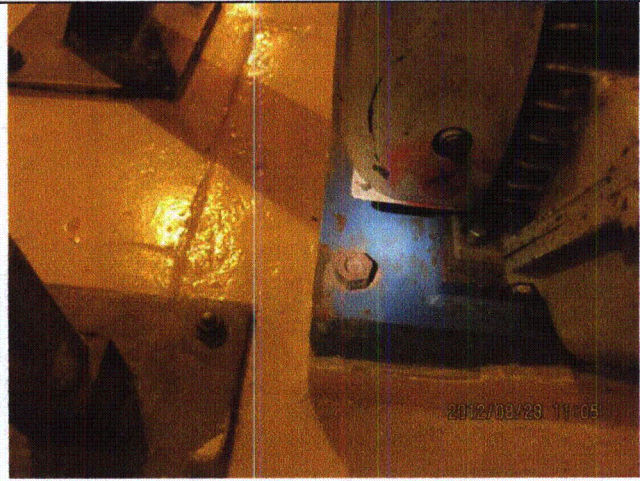
Equipment ID No.: 2DO01P

Equipment Class: (5) Horizontal Pumps

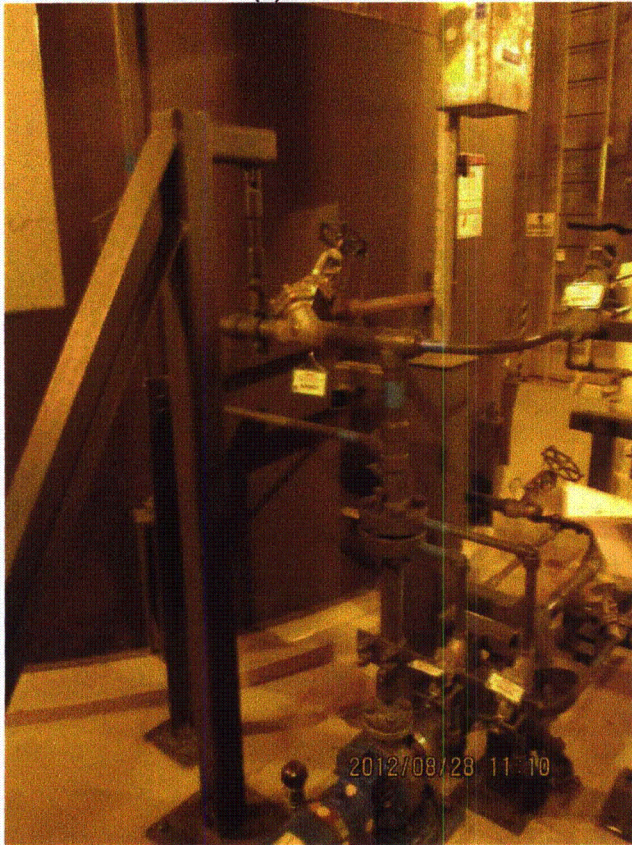
Equipment Description: PUMP, DIESEL OILTRANSFER



LaSalle 8-28-12 164 (4)



LaSalle 8-28-12 164 (5)



LaSalle 8-28-12 164 (6)



LaSalle 8-28-12 164 (7)

Status: Y N U

Seismic Walkdown Checklist (SWC)

Equipment ID No.: 2D001P

Equipment Class: (5) Horizontal Pumps

Equipment Description: PUMP, DIESEL OILTRANSFER



LaSalle 8-28-12 164 (8)



LaSalle 8-28-12 164 (9)

Status: Y N U

Seismic Walkdown Checklist (SWC)

Equipment ID No.: 2DO05T

Equipment Class: (21) Tanks and Heat Exchangers

Equipment Description: DG 2A DAY TK

Project: LaSalle 2 SWEL

Location (Bldg, Elev, Room/Area): DG, 710.00 ft, ALL

Manufacturer/Model:

Instructions for Completing Checklist

This checklist may be used to document the results of the Seismic Walkdown of an item of equipment on the SWEL. The space below each of the following questions may be used to record the results of judgments and findings. Additional space is provided at the end of this checklist for documenting other comments.

Anchorage

1. Is anchorage configuration verification required (i.e., is the item one of the 50% of SWEL items requiring such verification)? Yes

2. Is the anchorage free of bent, broken, missing or loose hardware? Yes

3. Is the anchorage free of corrosion that is more than mild surface oxidation? Yes

4. Is the anchorage free of visible cracks in the concrete near the anchors? Yes

5. Is the anchorage configuration consistent with plant documentation? (Note: This question only applies if the item is one of the 50% for which an anchorage configuration verification is required.) Yes
Anchorage shown on drawings M-1569, Rev. J and M-1591, Sheet 3, Rev. U.

6. Based on the above anchorage evaluations, is the anchorage free of potentially adverse seismic conditions? Yes

Status: Y N U

Seismic Walkdown Checklist (SWC)

Equipment ID No.: 2DO05T

Equipment Class: (21) Tanks and Heat Exchangers

Equipment Description: DG 2A DAY TK

Interaction Effects

7. Are soft targets free from impact by nearby equipment or structures? Yes

Pipe with valve 2DO059 in contact with tank support piers. Pipe is flexible and piers are robust. Judged to be acceptable.

8. Are overhead equipment, distribution systems, ceiling tiles and lighting, and masonry block walls not likely to collapse onto the equipment? Yes

Overhead light fixtures judged to be acceptable.

Day tank room masonry walls are safety-related per drawing A-280, Rev. AC.

9. Do attached lines have adequate flexibility to avoid damage? Yes

10. Based on the above seismic interaction evaluations, is equipment free of potentially adverse seismic interaction effects? Yes

Other Adverse Conditions

11. Have you looked for and found no adverse seismic conditions that could adversely affect the safety functions of the equipment? Yes

Comments

Seismic Walkdown Team: D. Carter & J. Griffith - 8/28/2012

Evaluated by:  David Carter Date: 10/17/2012

 James Griffith 10/17/2012

Status: Y N U

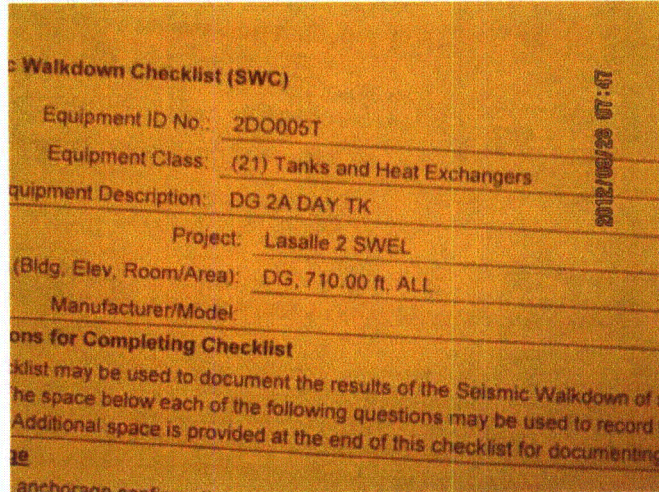
Seismic Walkdown Checklist (SWC)

Equipment ID No.: 2DO05T

Equipment Class: (21) Tanks and Heat Exchangers

Equipment Description: DG 2A DAY TK

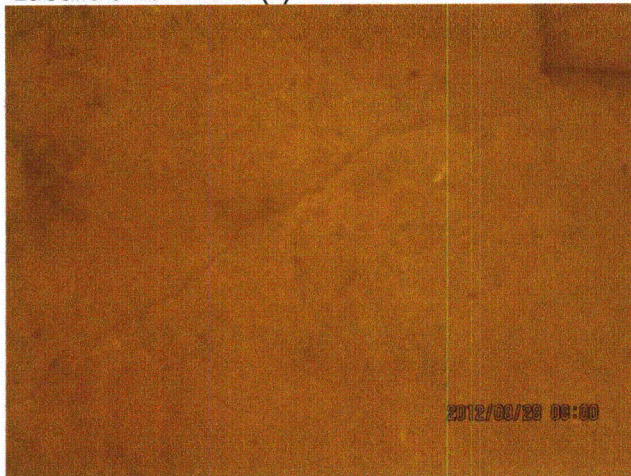
Photos



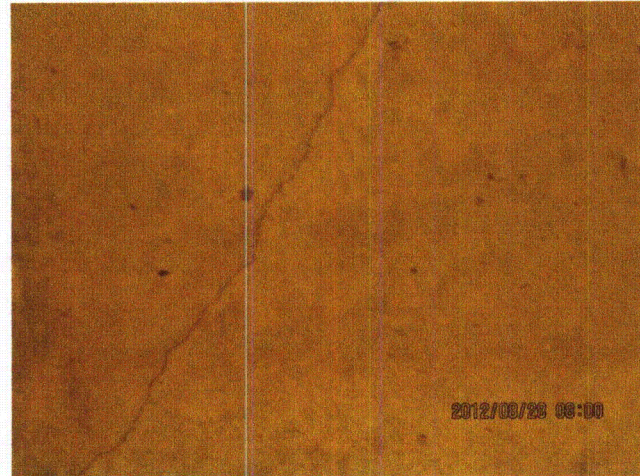
LaSalle 8-28-12 046 (1)



LaSalle 8-28-12 046 (10)



LaSalle 8-28-12 046 (11)



LaSalle 8-28-12 046 (12)

Status: Y N U

Seismic Walkdown Checklist (SWC)

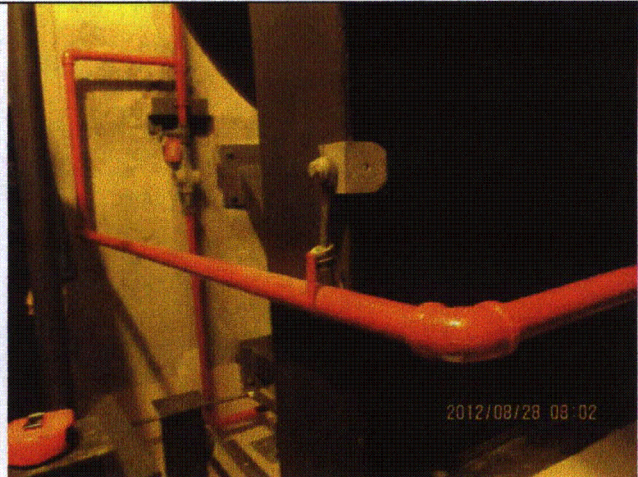
Equipment ID No.: 2D005T

Equipment Class: (21) Tanks and Heat Exchangers

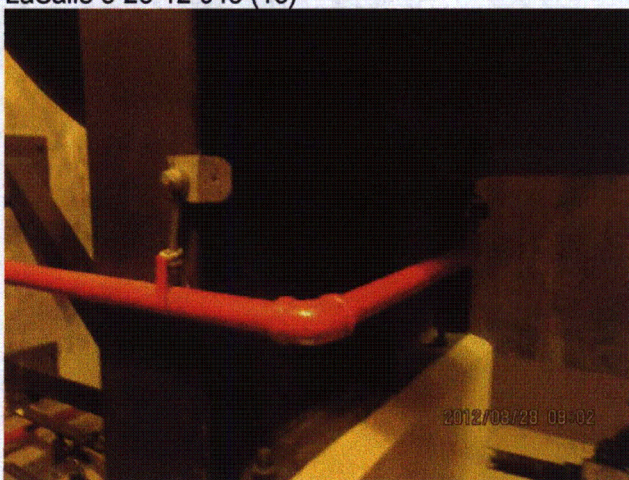
Equipment Description: DG 2A DAY TK



LaSalle 8-28-12 046 (13)



LaSalle 8-28-12 046 (14)



LaSalle 8-28-12 046 (15)



LaSalle 8-28-12 046 (2)

Status: Y N U

Seismic Walkdown Checklist (SWC)

Equipment ID No.: 2DO05T

Equipment Class: (21) Tanks and Heat Exchangers

Equipment Description: DG 2A DAY TK



LaSalle 8-28-12 046 (3)



LaSalle 8-28-12 046 (4)

Status: Y N U

Seismic Walkdown Checklist (SWC)

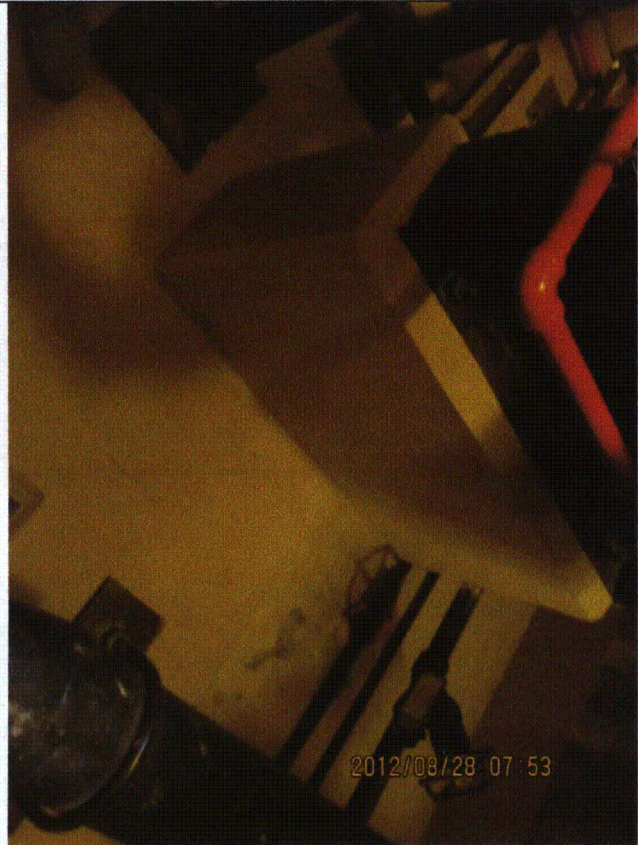
Equipment ID No.: 2D005T

Equipment Class: (21) Tanks and Heat Exchangers

Equipment Description: DG 2A DAY TK



LaSalle 8-28-12 046 (5)



LaSalle 8-28-12 046 (6)

Status: Y N U

Seismic Walkdown Checklist (SWC)

Equipment ID No.: 2DO05T

Equipment Class: (21) Tanks and Heat Exchangers

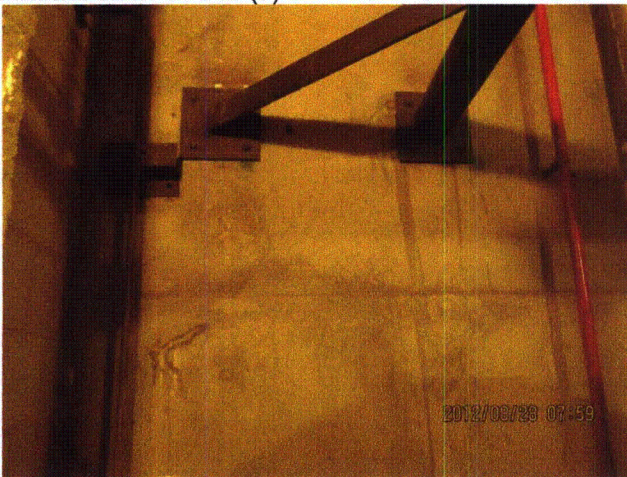
Equipment Description: DG 2A DAY TK



LaSalle 8-28-12 046 (7)



LaSalle 8-28-12 046 (8)



LaSalle 8-28-12 046 (9)

Status: Y N U

Seismic Walkdown Checklist (SWC)

Equipment ID No.: 2E12-B001B

Equipment Class: (21) Tanks and Heat Exchangers

Equipment Description: 2B RHR HEAT EXCH

Project: LaSalle 2 SWEL

Location (Bldg, Elev, Room/Area): RB, 710.00 ft, ALL

Manufacturer/Model:

Instructions for Completing Checklist

This checklist may be used to document the results of the Seismic Walkdown of an item of equipment on the SWEL. The space below each of the following questions may be used to record the results of judgments and findings. Additional space is provided at the end of this checklist for documenting other comments.

Anchorage

1. Is anchorage configuration verification required (i.e., is the item one of the 50% of SWEL items requiring such verification)? Yes

2. Is the anchorage free of bent, broken, missing or loose hardware? Yes

3. Is the anchorage free of corrosion that is more than mild surface oxidation? Yes

4. Is the anchorage free of visible cracks in the concrete near the anchors? Not Applicable
Heat exchanger mounted to gallery steel.

5. Is the anchorage configuration consistent with plant documentation? (Note: This question only applies if the item is one of the 50% for which an anchorage configuration verification is required.) Yes
Anchorage shown on drawings S-819A, Rev. G and S-899A, Rev. F.

6. Based on the above anchorage evaluations, is the anchorage free of potentially adverse seismic conditions? Yes

Interaction Effects

7. Are soft targets free from impact by nearby equipment or structures? Yes

Status: Y N U

Seismic Walkdown Checklist (SWC)

Equipment ID No.: 2E12-B001B

Equipment Class: (21) Tanks and Heat Exchangers

Equipment Description: 2B RHR HEAT EXCH


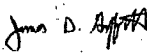
8. Are overhead equipment, distribution systems, ceiling tiles and lighting, and masonry block walls not likely to collapse onto the equipment? Yes
Overhead light fixtures judged to be acceptable.
Adjacent masonry walls are safety-related per drawing A-227, Rev. V.
9. Do attached lines have adequate flexibility to avoid damage? Yes
10. Based on the above seismic interaction evaluations, is equipment free of potentially adverse seismic interaction effects? Yes

Other Adverse Conditions

11. Have you looked for and found no adverse seismic conditions that could adversely affect the safety functions of the equipment? Yes

Comments

Seismic Walkdown Team: D. Carter & J. Griffith - 8/29/2012

Evaluated by:  David Carter Date: 10/17/2012
 James Griffith 10/17/2012

Status: Y N U

Seismic Walkdown Checklist (SWC)

Equipment ID No.: 2E12-B001B

Equipment Class: (21) Tanks and Heat Exchangers

Equipment Description: 2B RHR HEAT EXCH

Photos



LaSalle 8-29-12 225



LaSalle 8-29-12 226



LaSalle 8-29-12 227



LaSalle 8-29-12 228

Status: Y N U

Seismic Walkdown Checklist (SWC)

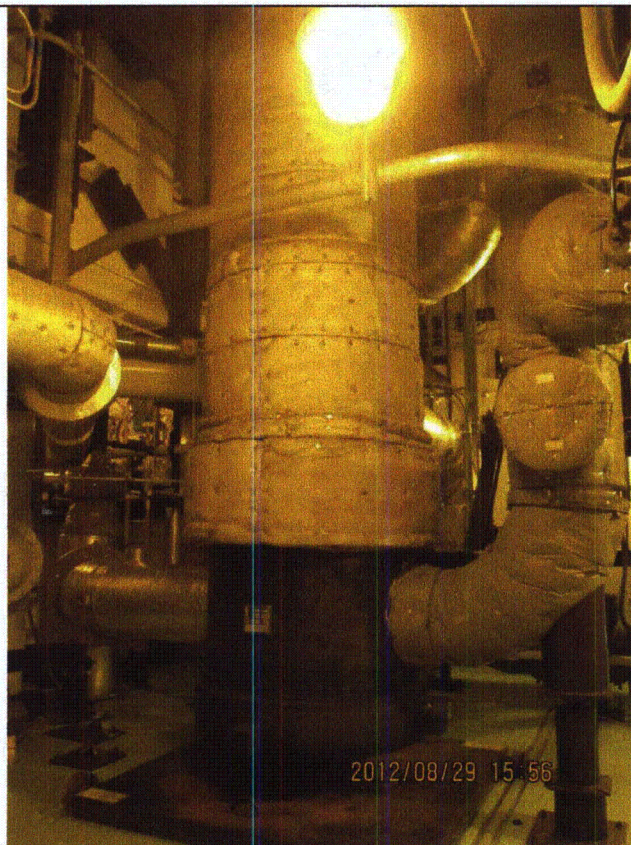
Equipment ID No.: 2E12-B001B

Equipment Class: (21) Tanks and Heat Exchangers

Equipment Description: 2B RHR HEAT EXCH



LaSalle 8-29-12 229



LaSalle 8-29-12 230

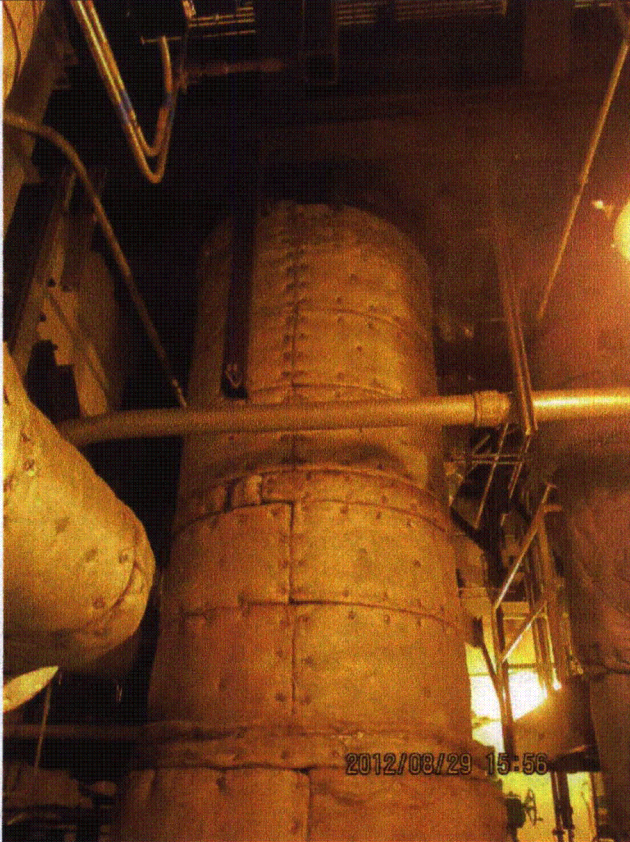
Status: Y N U

Seismic Walkdown Checklist (SWC)

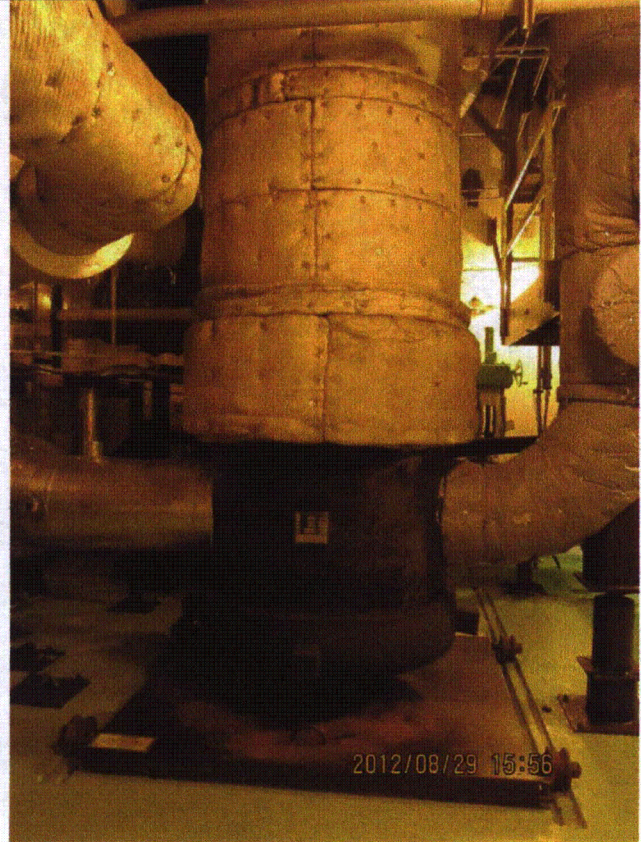
Equipment ID No.: 2E12-B001B

Equipment Class: (21) Tanks and Heat Exchangers

Equipment Description: 2B RHR HEAT EXCH



LaSalle 8-29-12 231



LaSalle 8-29-12 232

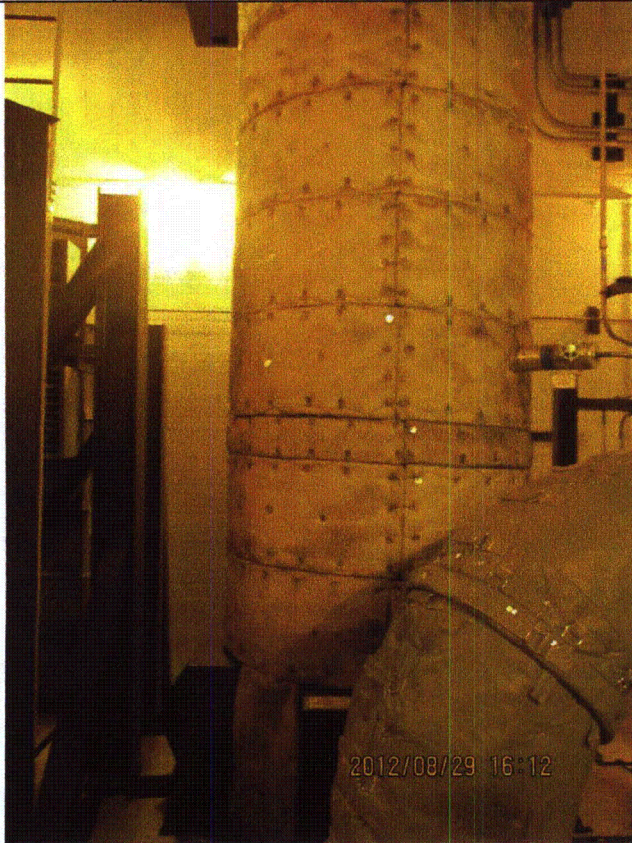
Status: Y N U

Seismic Walkdown Checklist (SWC)

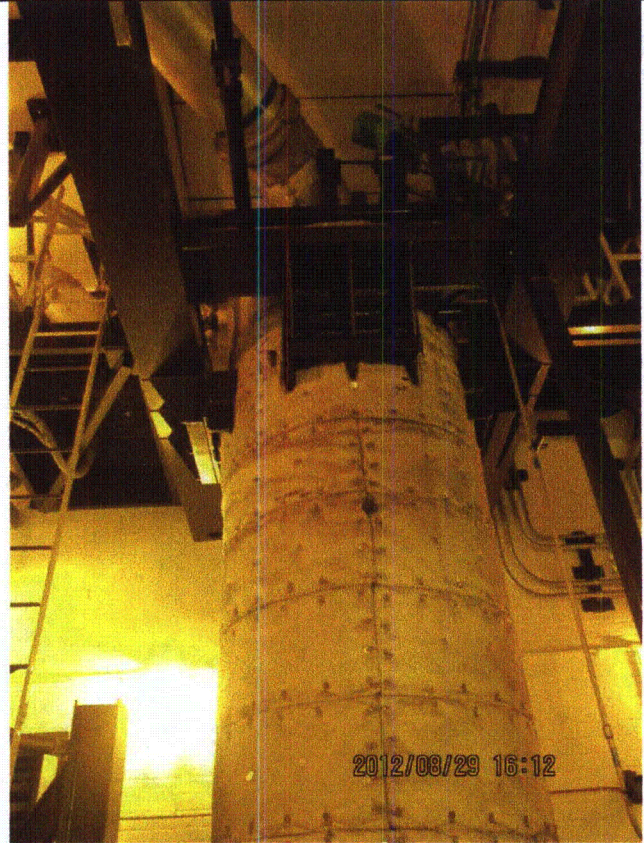
Equipment ID No.: 2E12-B001B

Equipment Class: (21) Tanks and Heat Exchangers

Equipment Description: 2B RHR HEAT EXCH



LaSalle 8-29-12 238



LaSalle 8-29-12 239

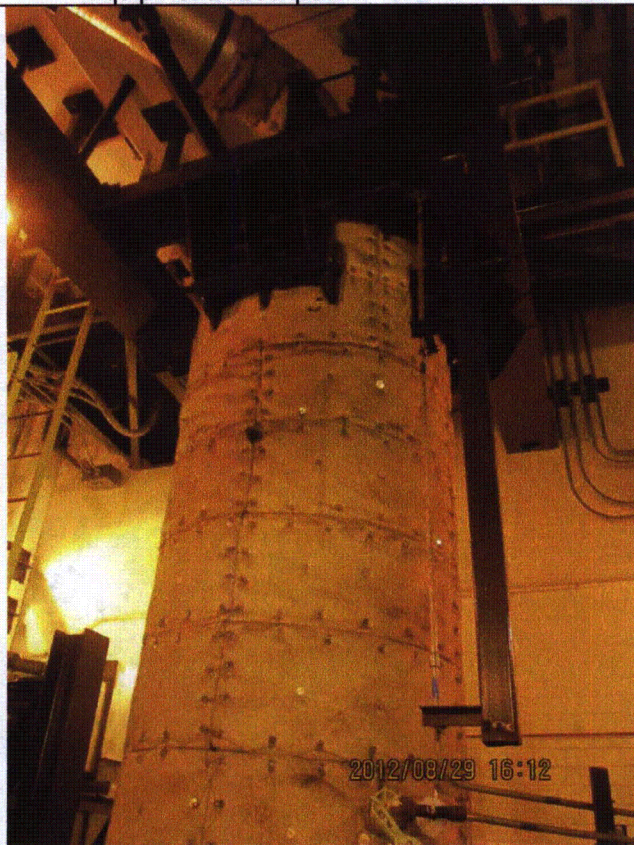
Status: Y N U

Seismic Walkdown Checklist (SWC)

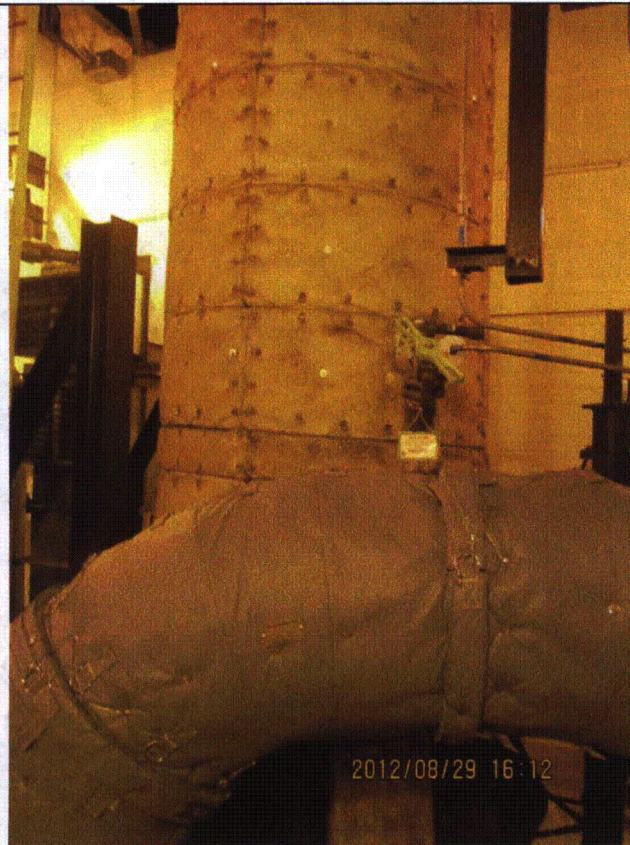
Equipment ID No.: 2E12-B001B

Equipment Class: (21) Tanks and Heat Exchangers

Equipment Description: 2B RHR HEAT EXCH



LaSalle 8-29-12 240



LaSalle 8-29-12 241



LaSalle 8-29-12 242