

Status: Y N U

Seismic Walkdown Checklist (SWC)

Equipment ID No.: 2DC01E

Equipment Class: (15) Batteries on Racks

Equipment Description: ASSY - BATTERY, 250 VDC

Project: LaSalle 2 SWEL

Location (Bldg, Elev,

Room/Area): AB, 710.00 ft, ALL

Manufacturer/Model:

Instructions for Completing Checklist

This checklist may be used to document the results of the Seismic Walkdown of an item of equipment on the SWEL. The space below each of the following questions may be used to record the results of judgments and findings. Additional space is provided at the end of this checklist for documenting other comments.

Anchorage

1. Is anchorage configuration verification required (i.e., is the item one of the 50% of SWEL items requiring such verification)? Yes

2. Is the anchorage free of bent, broken, missing or loose hardware? Yes

3. Is the anchorage free of corrosion that is more than mild surface oxidation? Yes

4. Is the anchorage free of visible cracks in the concrete near the anchors? Yes
Minor shrinkage cracking in floor judged to be acceptable.

5. Is the anchorage configuration consistent with plant documentation? (Note: This question only applies if the item is one of the 50% for which an anchorage configuration verification is required.) Yes
Anchorage shown on drawing 1E-2-3434, Sheet 4, Rev. A.

6. Based on the above anchorage evaluations, is the anchorage free of potentially adverse seismic conditions? Yes

Status: Y N U

Seismic Walkdown Checklist (SWC)

Equipment ID No.: 2DC01E

Equipment Class: (15) Batteries on Racks

Equipment Description: ASSY - BATTERY, 250 VDC

Interaction Effects

7. Are soft targets free from impact by nearby equipment or structures? Yes
8. Are overhead equipment, distribution systems, ceiling tiles and lighting, and masonry block walls not likely to collapse onto the equipment? Yes
Overhead light fixtures judged to be acceptable.
Battery room masonry walls are safety-related per drawing A-185, Rev. BD.
9. Do attached lines have adequate flexibility to avoid damage? Yes
10. Based on the above seismic interaction evaluations, is equipment free of potentially adverse seismic interaction effects? Yes

Other Adverse Conditions

11. Have you looked for and found no adverse seismic conditions that could adversely affect the safety functions of the equipment? Yes

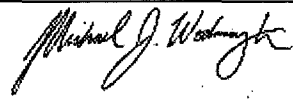
Comments

Seismic Walkdown Team: J. Griffith & M. Wodarcyk - 9/13/2012

Evaluated by:

 James Griffith

Date: 10/19/2012

 Michael Wodarcyk

10/19/2012

Status: Y N U

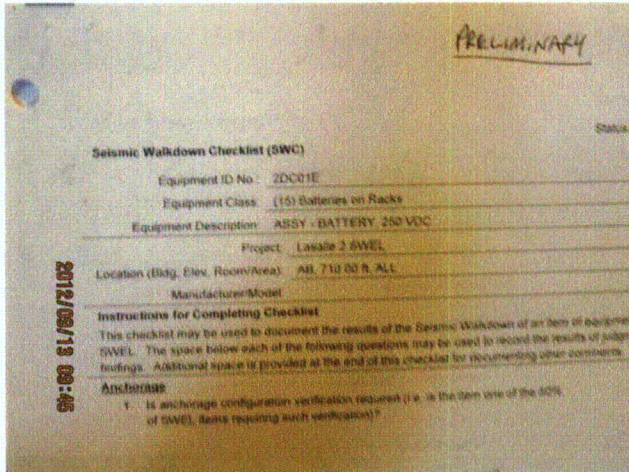
Seismic Walkdown Checklist (SWC)

Equipment ID No.: 2DC01E

Equipment Class: (15) Batteries on Racks

Equipment Description: ASSY - BATTERY, 250 VDC

Photos



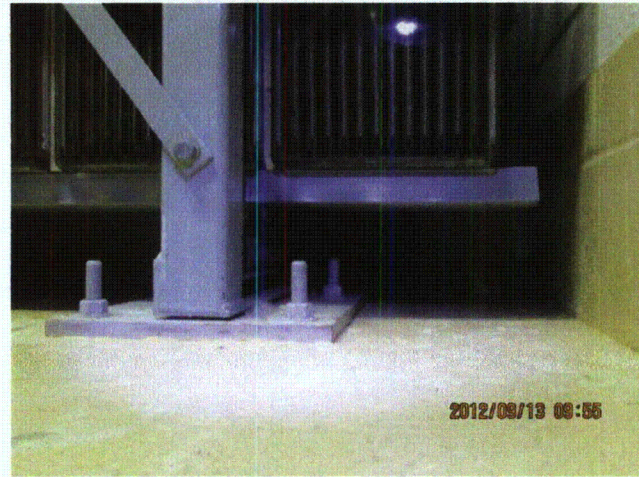
20120913-Lasalle 081



20120913-Lasalle 082



20120913-Lasalle 083



20120913-Lasalle 084

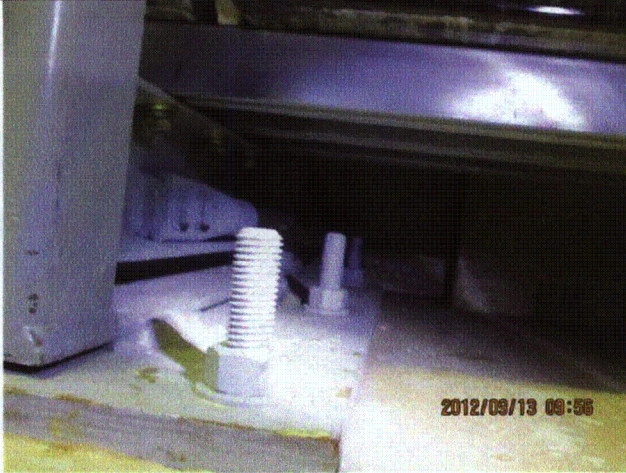
Status: Y N U

Seismic Walkdown Checklist (SWC)

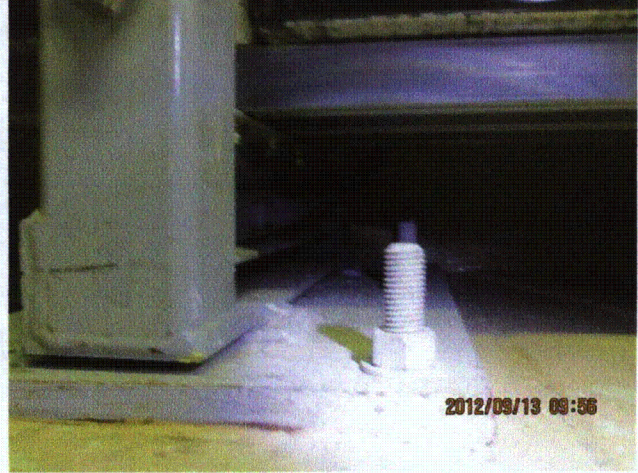
Equipment ID No.: 2DC01E

Equipment Class: (15) Batteries on Racks

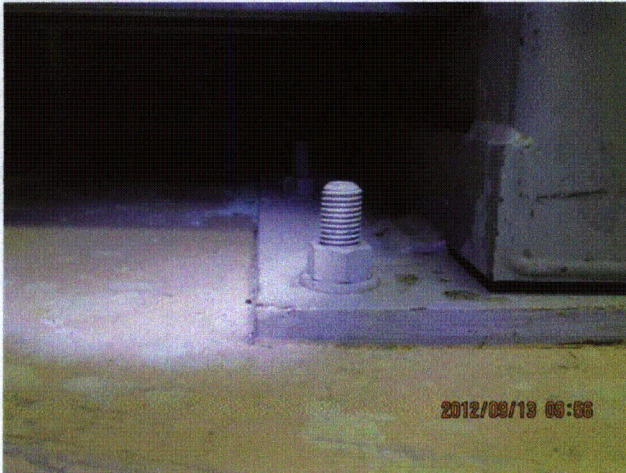
Equipment Description: ASSY - BATTERY, 250 VDC



20120913-Lasalle 085



20120913-Lasalle 086



20120913-Lasalle 087



20120913-Lasalle 088

Status: Y N U

Seismic Walkdown Checklist (SWC)

Equipment ID No.: 2DC01E

Equipment Class: (15) Batteries on Racks

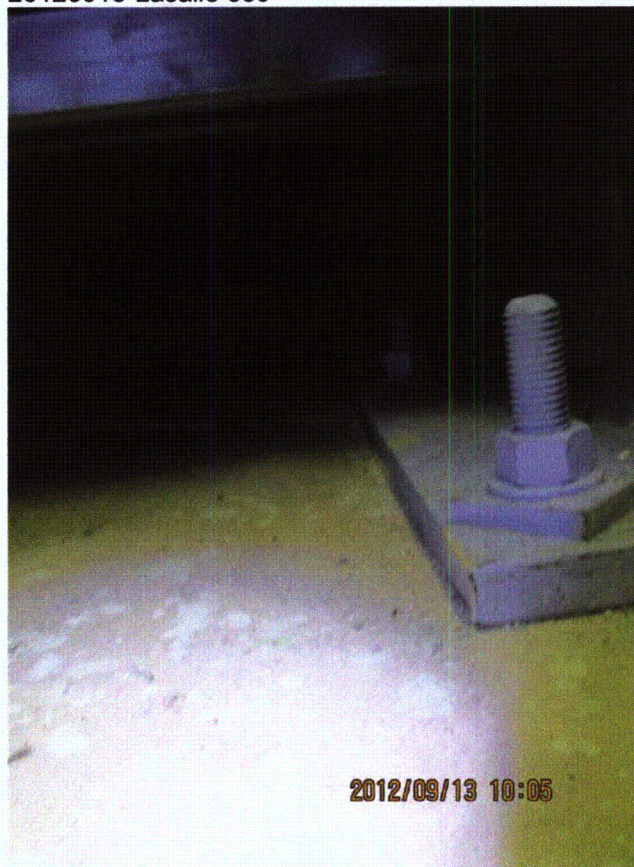
Equipment Description: ASSY - BATTERY, 250 VDC



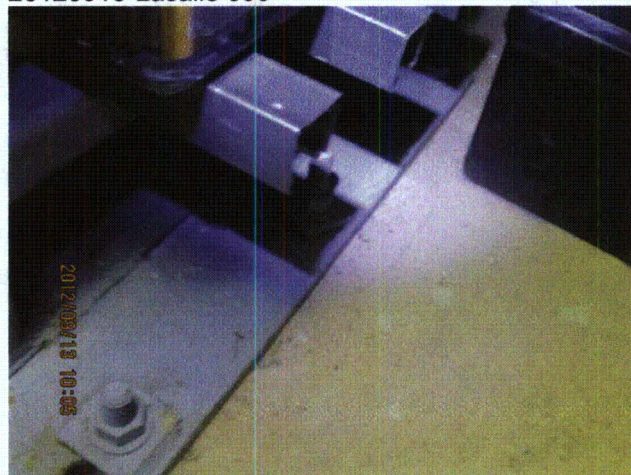
20120913-Lasalle 089



20120913-Lasalle 090



20120913-Lasalle 091



20120913-Lasalle 092

Status: Y N U

Seismic Walkdown Checklist (SWC)

Equipment ID No.: 2DC01E

Equipment Class: (15) Batteries on Racks

Equipment Description: ASSY - BATTERY, 250 VDC



20120913-Lasalle 093



20120913-Lasalle 094



20120913-Lasalle 095



20120913-Lasalle 096

Status: Y N U

Seismic Walkdown Checklist (SWC)

Equipment ID No.: 2DC01E

Equipment Class: (15) Batteries on Racks

Equipment Description: ASSY - BATTERY, 250 VDC



2012/09/13 10:06

20120913-Lasalle 097



2012/09/13 10:07

20120913-Lasalle 098



2012/09/13 10:07

20120913-Lasalle 099



2012/09/13 10:07

20120913-Lasalle 100

Status: Y N U

Seismic Walkdown Checklist (SWC)

Equipment ID No.: 2DC01E

Equipment Class: (15) Batteries on Racks

Equipment Description: ASSY - BATTERY, 250 VDC



20120913-Lasalle 101



20120913-Lasalle 102



20120913-Lasalle 103



20120913-Lasalle 104

Status: Y N U

Seismic Walkdown Checklist (SWC)

Equipment ID No.: 2DC02E

Equipment Class: (14) Distribution Panels

Equipment Description: DIV I 250 VDC DISTRIBUTION BUS 2

Project: Lasalle 2 SWEL

Location (Bldg, Elev,

Room/Area): AB, 710.00 ft, ALL

Manufacturer/Model:

Instructions for Completing Checklist

This checklist may be used to document the results of the Seismic Walkdown of an item of equipment on the SWEL. The space below each of the following questions may be used to record the results of judgments and findings. Additional space is provided at the end of this checklist for documenting other comments.

Anchorage

1. Is anchorage configuration verification required (i.e., is the item one of the 50% of SWEL items requiring such verification)? Yes

2. Is the anchorage free of bent, broken, missing or loose hardware? Yes

3. Is the anchorage free of corrosion that is more than mild surface oxidation? Yes

4. Is the anchorage free of visible cracks in the concrete near the anchors? Yes

5. Is the anchorage configuration consistent with plant documentation? (Note: This question only applies if the item is one of the 50% for which an anchorage configuration verification is required.) Yes
Anchorage shown on drawings 1E-2-3434, Sheet 1, Rev. AY and 1E-2-3434, Sheet 2, Rev. X.

6. Based on the above anchorage evaluations, is the anchorage free of potentially adverse seismic conditions? Yes

Status: Y N U

Seismic Walkdown Checklist (SWC)

Equipment ID No.: 2DC02E

Equipment Class: (14) Distribution Panels

Equipment Description: DIV I 250 VDC DISTRIBUTION BUS 2

Interaction Effects

7. Are soft targets free from impact by nearby equipment or structures? Yes

External welds viewed between 2DC05E and 2DC02E. No gap observed between the MCCs. Judged to be acceptable.

Bottoms of front doors are slightly sprung at full-length hinge side. No seismic interaction concern.

8. Are overhead equipment, distribution systems, ceiling tiles and lighting, and masonry block walls not likely to collapse onto the equipment? Yes

Slight S-hook opening on overhead light fixtures would not allow fixtures to fall during a seismic event. Judged to be acceptable.

Short support chains on overhead light fixtures would not allow fixtures to interact with MCCs via pendulum action during a seismic event. Judged to be acceptable.

Adjacent battery room masonry walls are safety-related per drawing A-185, Rev. BD.

9. Do attached lines have adequate flexibility to avoid damage? Yes

10. Based on the above seismic interaction evaluations, is equipment free of potentially adverse seismic interaction effects? Yes

Other Adverse Conditions

11. Have you looked for and found no adverse seismic conditions that could adversely affect the safety functions of the equipment? Yes

Comments

Seismic Walkdown Team: J. Griffith & M. Wodarcyk - 9/13/2012

No photographs of this item were taken.

Evaluated by:

 James Griffith

Date: 10/19/2012


Michael Wodarcyk

10/19/2012

Photos

Status: Y N U

Seismic Walkdown Checklist (SWC)

Equipment ID No.: 2DC03E

Equipment Class: (16) Inverters

Equipment Description: 250VDC BATTERY CHARGER

Project: LaSalle 2 SWEL

Location (Bldg, Elev,

Room/Area): AB, 710.00 ft, ALL

Manufacturer/Model:

Instructions for Completing Checklist

This checklist may be used to document the results of the Seismic Walkdown of an item of equipment on the SWEL. The space below each of the following questions may be used to record the results of judgments and findings. Additional space is provided at the end of this checklist for documenting other comments.

Anchorage

1. Is anchorage configuration verification required (i.e., is the item one of the 50% of SWEL items requiring such verification)? Yes

2. Is the anchorage free of bent, broken, missing or loose hardware? Yes

3. Is the anchorage free of corrosion that is more than mild surface oxidation? Yes

4. Is the anchorage free of visible cracks in the concrete near the anchors? Yes

5. Is the anchorage configuration consistent with plant documentation? (Note: This question only applies if the item is one of the 50% for which an anchorage configuration verification is required.) Yes
Anchorage shown on drawings
1E-2-3434, Sheet 1, Rev. AY
1E-2-3434, Sheet 2, Rev. X
S-948, Rev. AB.

6. Based on the above anchorage evaluations, is the anchorage free of potentially adverse seismic conditions? Yes

Status: Y N U

Seismic Walkdown Checklist (SWC)

Equipment ID No.: 2DC03E

Equipment Class: (16) Inverters

Equipment Description: 250VDC BATTERY CHARGER

Interaction Effects

7. Are soft targets free from impact by nearby equipment or structures? Yes
Gap between rain hood at top of charger and wall at back of charger is approximately 3/8". Judged to be acceptable.
8. Are overhead equipment, distribution systems, ceiling tiles and lighting, and masonry block walls not likely to collapse onto the equipment? Yes
Overhead light fixtures judged to be acceptable.
Adjacent battery room masonry walls are safety-related per drawing A-185, Rev. BD.
9. Do attached lines have adequate flexibility to avoid damage? Yes
10. Based on the above seismic interaction evaluations, is equipment free of potentially adverse seismic interaction effects? Yes

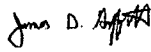
Other Adverse Conditions

11. Have you looked for and found no adverse seismic conditions that could adversely affect the safety functions of the equipment? Yes

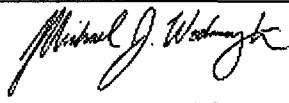
Comments

Seismic Walkdown Team: J. Griffith & M. Wodarczyk - 9/13/2012

Evaluated by:

 James Griffith

Date: 10/19/2012


Michael Wodarczyk

10/19/2012

Status: Y N U

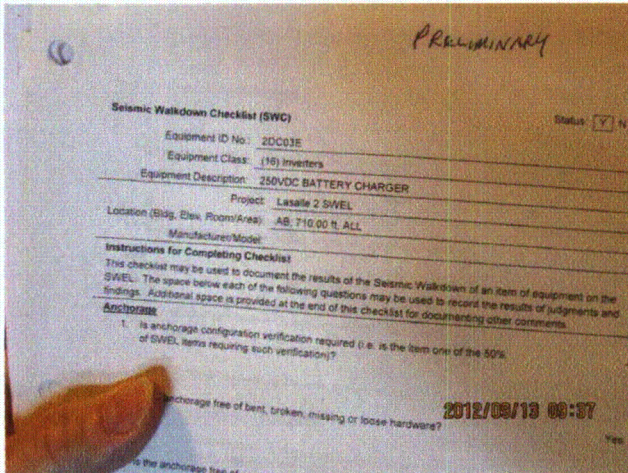
Seismic Walkdown Checklist (SWC)

Equipment ID No.: 2DC03E

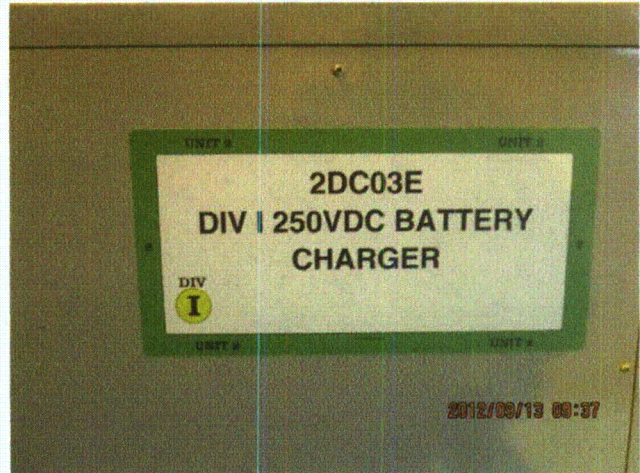
Equipment Class: (16) Inverters

Equipment Description: 250VDC BATTERY CHARGER

Photos



20120913-Lasalle 070



20120913-Lasalle 071



20120913-Lasalle 072



20120913-Lasalle 073

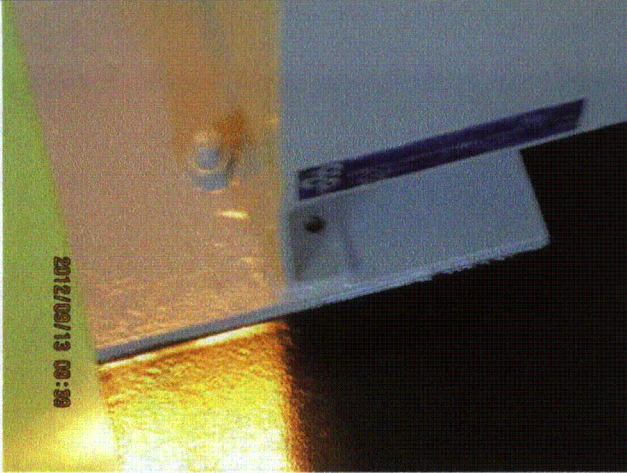
Status: Y N U

Seismic Walkdown Checklist (SWC)

Equipment ID No.: 2DC03E

Equipment Class: (16) Inverters

Equipment Description: 250VDC BATTERY CHARGER



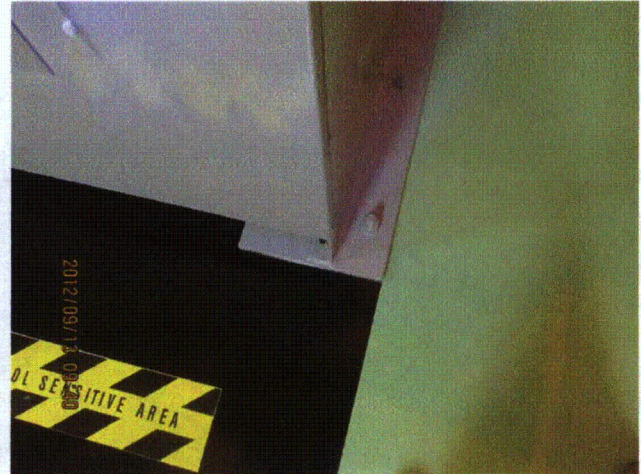
20120913-Lasalle 074



20120913-Lasalle 075



20120913-Lasalle 076



20120913-Lasalle 077

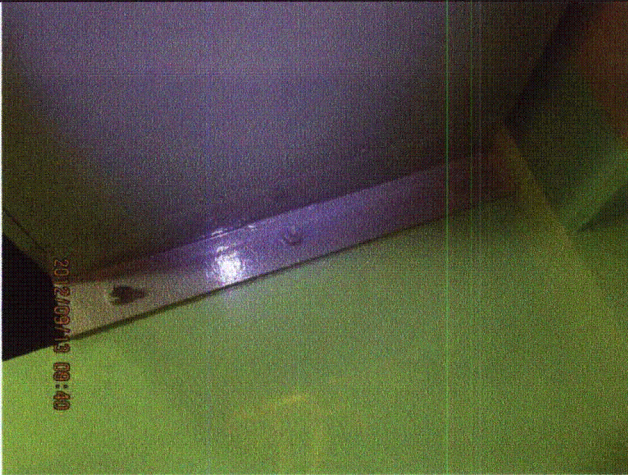
Status: Y N U

Seismic Walkdown Checklist (SWC)

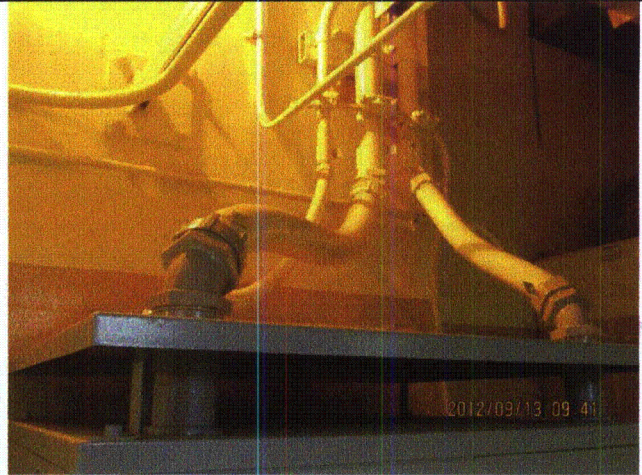
Equipment ID No.: 2DC03E

Equipment Class: (16) Inverters

Equipment Description: 250VDC BATTERY CHARGER



20120913-Lasalle 078



20120913-Lasalle 079



20120913-Lasalle 080

Status: Y N U

Seismic Walkdown Checklist (SWC)

Equipment ID No.: 2DC05E

Equipment Class: (1) Motor Control Centers

Equipment Description: 250VDC MCC 221X

Project: LaSalle 2 SWEL

Location (Bldg, Elev,

Room/Area): AB, 710.00 ft, ALL

Manufacturer/Model:

Instructions for Completing Checklist

This checklist may be used to document the results of the Seismic Walkdown of an item of equipment on the SWEL. The space below each of the following questions may be used to record the results of judgments and findings. Additional space is provided at the end of this checklist for documenting other comments.

Anchorage

1. Is anchorage configuration verification required (i.e., is the item one of the 50% of SWEL items requiring such verification)? Yes

2. Is the anchorage free of bent, broken, missing or loose hardware? Yes

3. Is the anchorage free of corrosion that is more than mild surface oxidation? Yes

4. Is the anchorage free of visible cracks in the concrete near the anchors? Yes

5. Is the anchorage configuration consistent with plant documentation? (Note: This question only applies if the item is one of the 50% for which an anchorage configuration verification is required.) Yes
Anchorage shown on drawings 1E-2-3434, Sheet 1, Rev. AY and 1E-2-3434, Sheet 2, Rev. X.

6. Based on the above anchorage evaluations, is the anchorage free of potentially adverse seismic conditions? Yes

Status: Y N U

Seismic Walkdown Checklist (SWC)

Equipment ID No.: 2DC05E

Equipment Class: (1) Motor Control Centers

Equipment Description: 250VDC MCC 221X

Interaction Effects

7. Are soft targets free from impact by nearby equipment or structures? Yes

External welds viewed between 2DC05E and 2DC02E. No gap observed between the MCCs. Judged to be acceptable.

Bottoms of front doors are slightly sprung at full-length hinge side. No seismic interaction concern.

8. Are overhead equipment, distribution systems, ceiling tiles and lighting, and masonry block walls not likely to collapse onto the equipment? Yes

Slight S-hook opening on overhead light fixtures would not allow fixtures to fall during a seismic event. Judged to be acceptable.

Short support chains on overhead light fixtures would not allow fixtures to interact with MCCs via pendulum action during a seismic event. Judged to be acceptable.

Adjacent battery room masonry walls are safety-related per drawing A-185, Rev. BD.

9. Do attached lines have adequate flexibility to avoid damage? Yes

10. Based on the above seismic interaction evaluations, is equipment free of potentially adverse seismic interaction effects? Yes

Other Adverse Conditions

11. Have you looked for and found no adverse seismic conditions that could adversely affect the safety functions of the equipment? Yes

Comments

Seismic Walkdown Team: J. Griffith & M. Wodarczyk - 9/13/2012

Evaluated by: James D. Griffith James Griffith

Date: 10/19/2012

Michael J. Wodarczyk

Michael Wodarczyk

10/19/2012

Status: Y N U

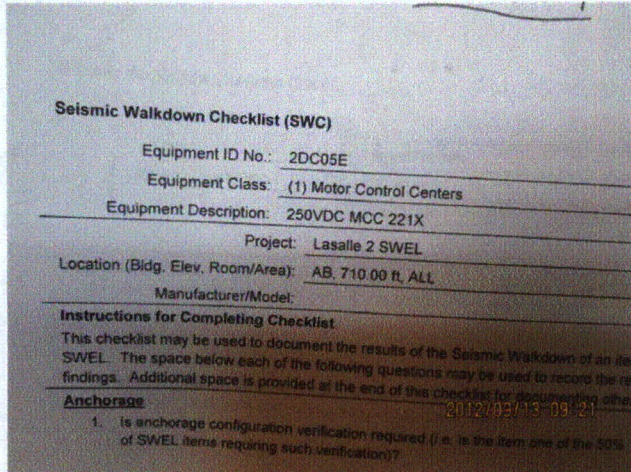
Seismic Walkdown Checklist (SWC)

Equipment ID No.: 2DC05E

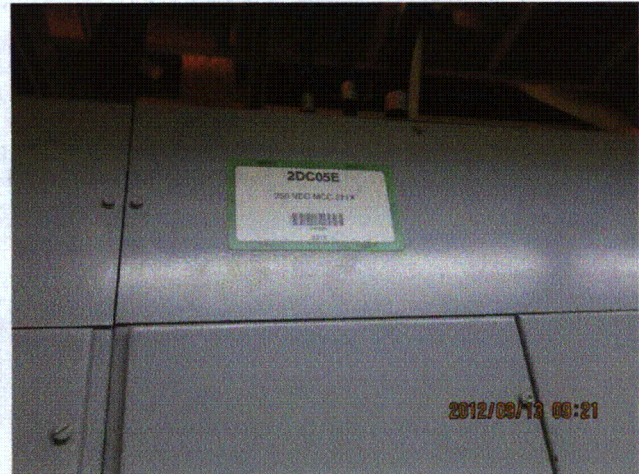
Equipment Class: (1) Motor Control Centers

Equipment Description: 250VDC MCC 221X

Photos



20120913-Lasalle 052



20120913-Lasalle 053



20120913-Lasalle 055

Status: Y N U

Seismic Walkdown Checklist (SWC)

Equipment ID No.: 2DC05E

Equipment Class: (1) Motor Control Centers

Equipment Description: 250VDC MCC 221X

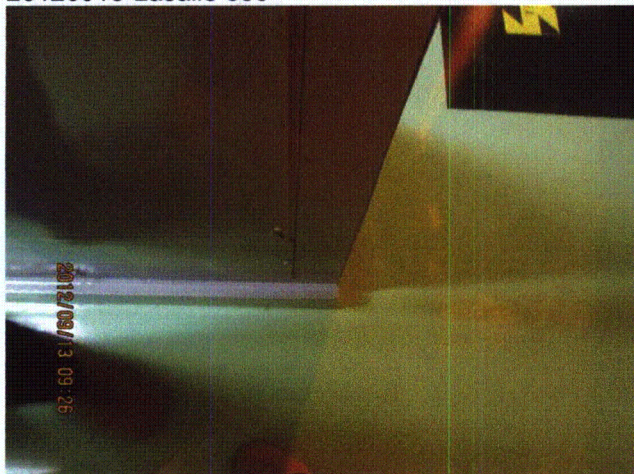
20120913-Lasalle 054



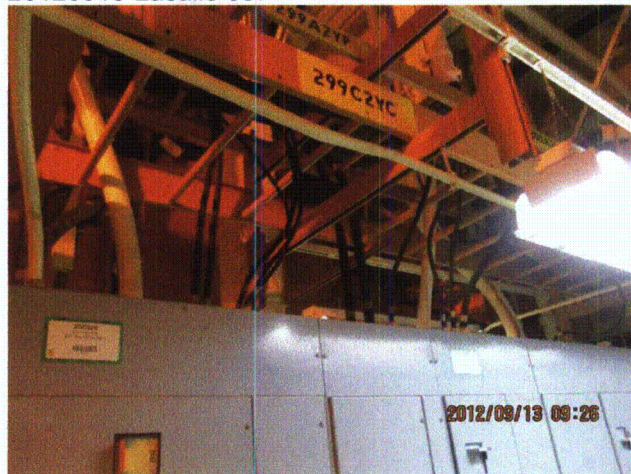
20120913-Lasalle 056



20120913-Lasalle 057



20120913-Lasalle 058



20120913-Lasalle 059

Status: Y N U

Seismic Walkdown Checklist (SWC)

Equipment ID No.: 2DC05E

Equipment Class: (1) Motor Control Centers

Equipment Description: 250VDC MCC 221X



20120913-Lasalle 060



20120913-Lasalle 061

Status: Y N U

Seismic Walkdown Checklist (SWC)

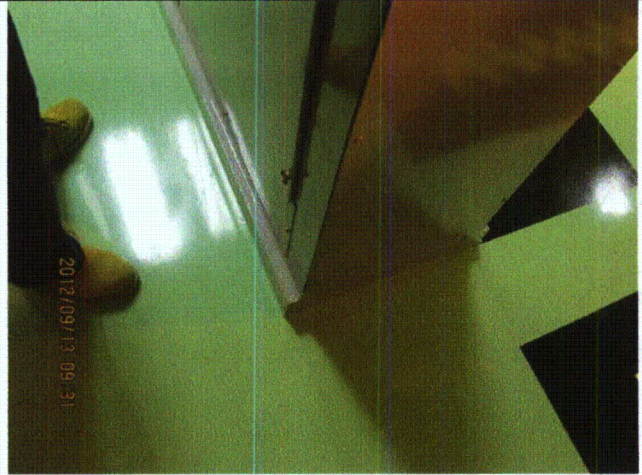
Equipment ID No.: 2DC05E

Equipment Class: (1) Motor Control Centers

Equipment Description: 250VDC MCC 221X



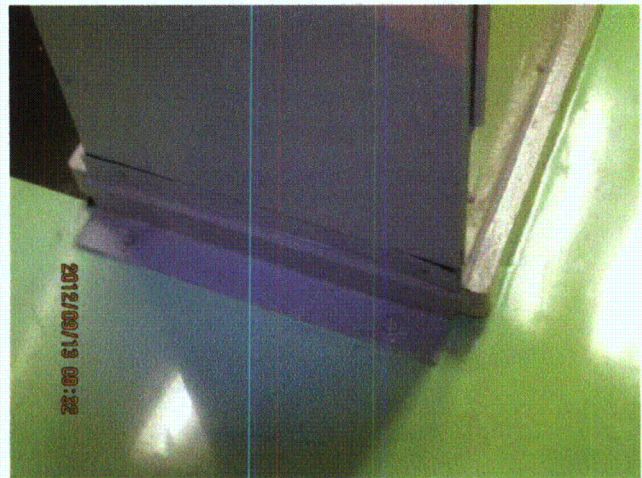
20120913-Lasalle 062



20120913-Lasalle 063



20120913-Lasalle 064



20120913-Lasalle 065

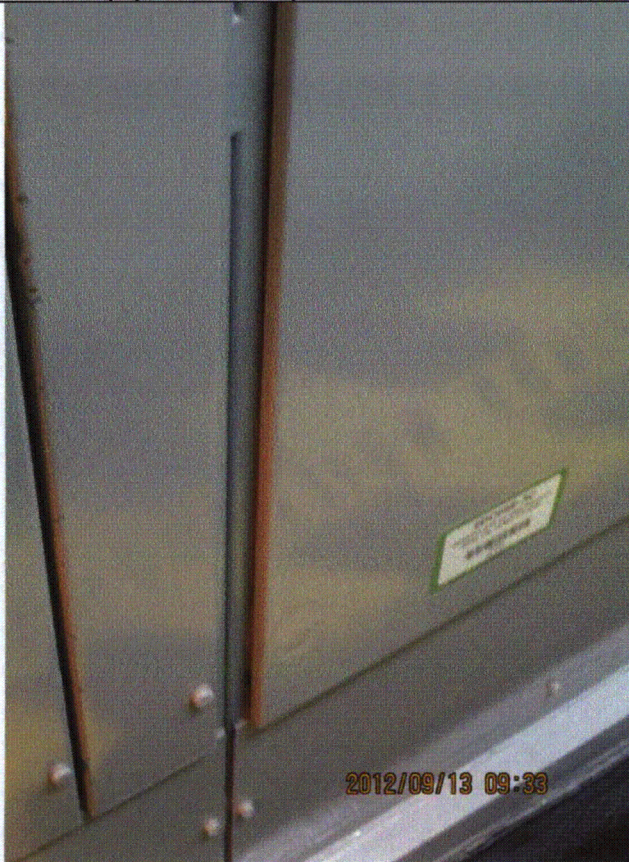
Status: Y N U

Seismic Walkdown Checklist (SWC)

Equipment ID No.: 2DC05E

Equipment Class: (1) Motor Control Centers

Equipment Description: 250VDC MCC 221X



20120913-Lasalle 066



20120913-Lasalle 067

Status: Y N U

Seismic Walkdown Checklist (SWC)

Equipment ID No.: 2DC05E

Equipment Class: (1) Motor Control Centers

Equipment Description: 250VDC MCC 221X



20120913-Lasalle 068



20120913-Lasalle 069

Status: Y N U

Seismic Walkdown Checklist (SWC)

Equipment ID No.: 2DC13E

Equipment Class: (14) Distribution Panels

Equipment Description: DIV II 125VDC DISTRIBUTION PANEL 212Y

Project: Lasalle 2 SWEL

Location (Bldg, Elev, Room/Area): AB, 731.00 ft, ALL

Manufacturer/Model:

Instructions for Completing Checklist

This checklist may be used to document the results of the Seismic Walkdown of an item of equipment on the SWEL. The space below each of the following questions may be used to record the results of judgments and findings. Additional space is provided at the end of this checklist for documenting other comments.

Anchorage

1. Is anchorage configuration verification required (i.e., is the item one of the 50% of SWEL items requiring such verification)? Yes

2. Is the anchorage free of bent, broken, missing or loose hardware? Yes

3. Is the anchorage free of corrosion that is more than mild surface oxidation? Yes

4. Is the anchorage free of visible cracks in the concrete near the anchors? Yes

5. Is the anchorage configuration consistent with plant documentation? (Note: This question only applies if the item is one of the 50% for which an anchorage configuration verification is required.) Yes
Anchorage are shown on drawings 1E-2-3444, Sheet 1, Rev. B and 1E-2-3434, Sheet 2, Rev. X.

6. Based on the above anchorage evaluations, is the anchorage free of potentially adverse seismic conditions? Yes

Status: Y N U

Seismic Walkdown Checklist (SWC)

Equipment ID No.: 2DC13E

Equipment Class: (14) Distribution Panels

Equipment Description: DIV II 125VDC DISTRIBUTION PANEL 212Y

Interaction Effects

7. Are soft targets free from impact by nearby equipment or structures? Yes

The gaps between the panel and adjacent supports near the top of the panel are judged to be acceptable.

Door sprung top and bottom. Door is latched and therefore this is judged to not be a seismic concern.

8. Are overhead equipment, distribution systems, ceiling tiles and lighting, and masonry block walls not likely to collapse onto the equipment? Yes

9. Do attached lines have adequate flexibility to avoid damage? Yes


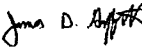
10. Based on the above seismic interaction evaluations, is equipment free of potentially adverse seismic interaction effects? Yes

Other Adverse Conditions

11. Have you looked for and found no adverse seismic conditions that could adversely affect the safety functions of the equipment? Yes

Comments

Seismic Walkdown Team: D. Carter & J. Griffith - 8/27/2012

Evaluated by:  David Carter Date: 10/17/2012
 James D. Griffith 10/17/2012

Status: Y N U

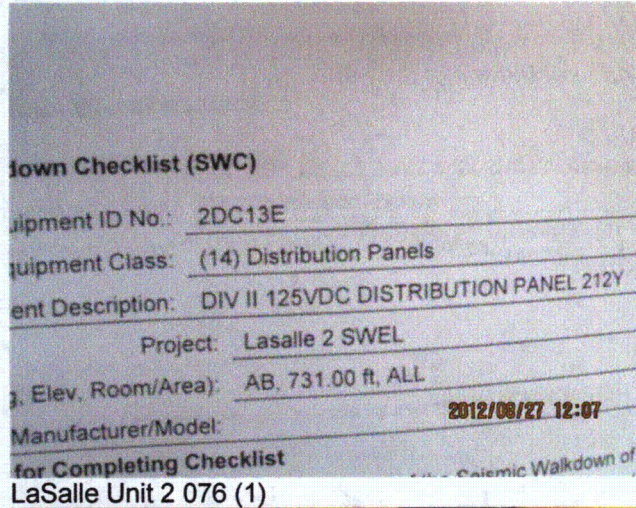
Seismic Walkdown Checklist (SWC)

Equipment ID No.: 2DC13E

Equipment Class: (14) Distribution Panels

Equipment Description: DIV II 125VDC DISTRIBUTION PANEL 212Y

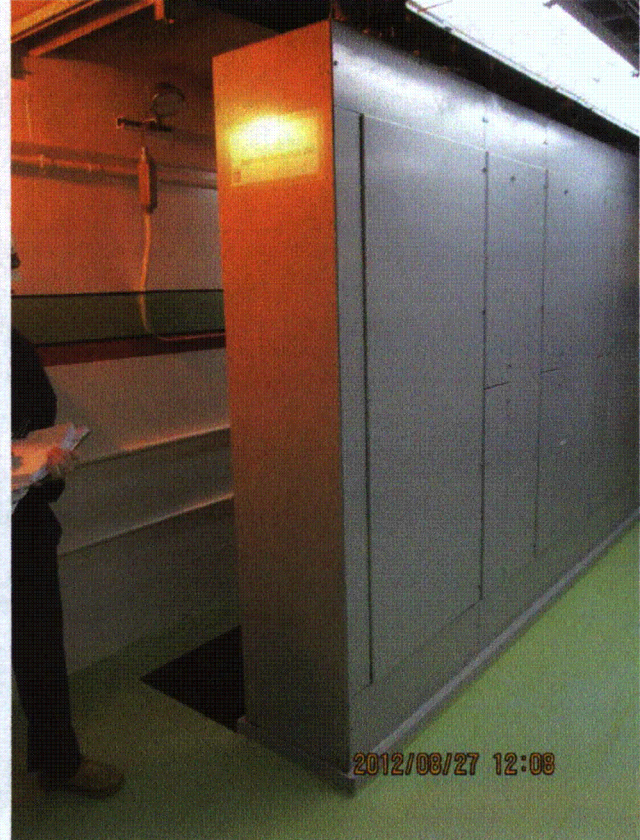
Photos



LaSalle Unit 2 076 (2)



LaSalle Unit 2 076 (3)



LaSalle Unit 2 076 (4)

Status: Y N U

Seismic Walkdown Checklist (SWC)

Equipment ID No.: 2DC14E

Equipment Class: (15) Batteries on Racks

Equipment Description: ASSY - BATTERY, 125 VDC DIV-2

Project: LaSalle 2 SWEL

Location (Bldg, Elev, Room/Area): AB, 731.00 ft, ALL

Manufacturer/Model: _____

Instructions for Completing Checklist

This checklist may be used to document the results of the Seismic Walkdown of an item of equipment on the SWEL. The space below each of the following questions may be used to record the results of judgments and findings. Additional space is provided at the end of this checklist for documenting other comments.

Anchorage

1. Is anchorage configuration verification required (i.e., is the item one of the 50% of SWEL items requiring such verification)? Yes

2. Is the anchorage free of bent, broken, missing or loose hardware? Yes

3. Is the anchorage free of corrosion that is more than mild surface oxidation? Yes

4. Is the anchorage free of visible cracks in the concrete near the anchors? Yes

5. Is the anchorage configuration consistent with plant documentation? (Note: This question only applies if the item is one of the 50% for which an anchorage configuration verification is required.) Yes
Anchorage shown on drawing 1E-2-3447, Rev. E.

6. Based on the above anchorage evaluations, is the anchorage free of potentially adverse seismic conditions? Yes

Status: Y N U

Seismic Walkdown Checklist (SWC)

Equipment ID No.: 2DC14E

Equipment Class: (15) Batteries on Racks

Equipment Description: ASSY - BATTERY, 125 VDC DIV-2

Interaction Effects

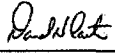
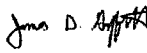
7. Are soft targets free from impact by nearby equipment or structures? Yes
8. Are overhead equipment, distribution systems, ceiling tiles and lighting, and masonry block walls not likely to collapse onto the equipment? Yes
Overhead light fixtures judged to be acceptable.
Battery room masonry walls are safety-related per drawing A-187, Rev. AR.
9. Do attached lines have adequate flexibility to avoid damage? Yes
10. Based on the above seismic interaction evaluations, is equipment free of potentially adverse seismic interaction effects? Yes

Other Adverse Conditions

11. Have you looked for and found no adverse seismic conditions that could adversely affect the safety functions of the equipment? Yes

Comments

Seismic Walkdown Team: D. Carter & J. Griffith - 8/27/2012

Evaluated by:  David Carter Date: 10/17/2012
 James Griffith 10/17/2012

Status: Y N U

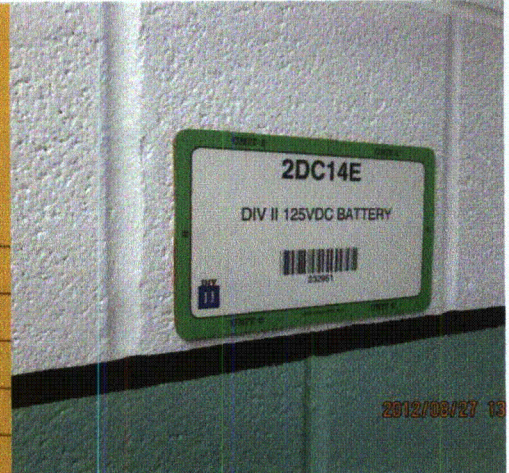
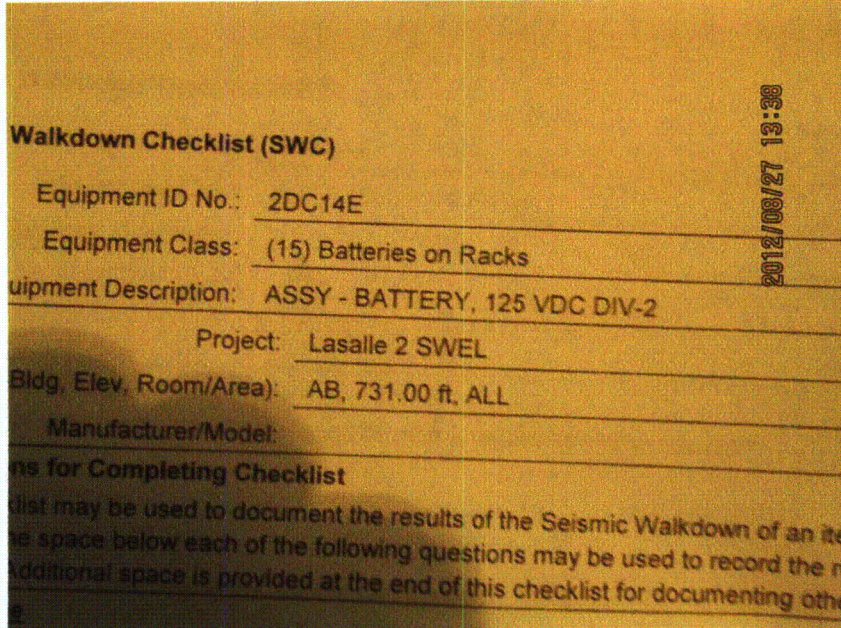
Seismic Walkdown Checklist (SWC)

Equipment ID No.: 2DC14E

Equipment Class: (15) Batteries on Racks

Equipment Description: ASSY - BATTERY, 125 VDC DIV-2

Photos



LaSalle Unit 2 105 (2)

LaSalle Unit 2 105 (1)

Status: Y N U

Seismic Walkdown Checklist (SWC)

Equipment ID No.: 2DC14E

Equipment Class: (15) Batteries on Racks

Equipment Description: ASSY - BATTERY, 125 VDC DIV-2



LaSalle Unit 2 105 (3)



LaSalle Unit 2 105 (4)



LaSalle Unit 2 105 (5)



LaSalle Unit 2 105 (6)

Status: Y N U

Seismic Walkdown Checklist (SWC)

Equipment ID No.: 2DC14E

Equipment Class: (15) Batteries on Racks

Equipment Description: ASSY - BATTERY, 125 VDC DIV-2



LaSalle Unit 2 105 (7)

Status: Y N U

Seismic Walkdown Checklist (SWC)

Equipment ID No.: 2DC15E

Equipment Class: (14) Distribution Panels

Equipment Description: DIV II 125VDC DISTRIBUTION BUS 2B

Project: LaSalle 2 SWEL

Location (Bldg, Elev, Room/Area): AB, 731.00 ft, ALL

Manufacturer/Model:

Instructions for Completing Checklist

This checklist may be used to document the results of the Seismic Walkdown of an item of equipment on the SWEL. The space below each of the following questions may be used to record the results of judgments and findings. Additional space is provided at the end of this checklist for documenting other comments.

Anchorage

1. Is anchorage configuration verification required (i.e., is the item one of the 50% of SWEL items requiring such verification)? Yes

2. Is the anchorage free of bent, broken, missing or loose hardware? Yes

3. Is the anchorage free of corrosion that is more than mild surface oxidation? Yes

4. Is the anchorage free of visible cracks in the concrete near the anchors? Yes

5. Is the anchorage configuration consistent with plant documentation? (Note: This question only applies if the item is one of the 50% for which an anchorage configuration verification is required.) Yes
Anchorage are shown on drawings 1E-2-3444, Sheet 1, Rev. B and 1E-2-3434, Sheet 2, Rev. X.

6. Based on the above anchorage evaluations, is the anchorage free of potentially adverse seismic conditions? Yes

Status: Y N U

Seismic Walkdown Checklist (SWC)

Equipment ID No.: 2DC15E

Equipment Class: (14) Distribution Panels

Equipment Description: DIV II 125VDC DISTRIBUTION BUS 2B

Interaction Effects

7. Are soft targets free from impact by nearby equipment or structures? Yes
The gaps between the panel and adjacent supports near the top of the panel are judged to be acceptable.
8. Are overhead equipment, distribution systems, ceiling tiles and lighting, and masonry block walls not likely to collapse onto the equipment? Yes
9. Do attached lines have adequate flexibility to avoid damage? Yes
10. Based on the above seismic interaction evaluations, is equipment free of potentially adverse seismic interaction effects? Yes

Other Adverse Conditions

11. Have you looked for and found no adverse seismic conditions that could adversely affect the safety functions of the equipment? Yes

Comments

Seismic Walkdown Team: D. Carter & J. Griffith - 8/27/2012

Evaluated by:  David Carter Date: 10/17/2012
 James Griffith 10/17/2012

Status: Y N U

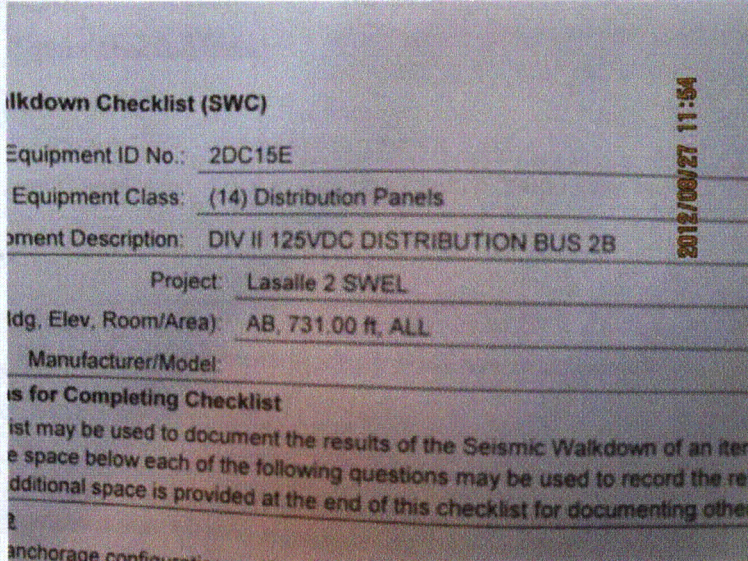
Seismic Walkdown Checklist (SWC)

Equipment ID No.: 2DC15E

Equipment Class: (14) Distribution Panels

Equipment Description: DIV II 125VDC DISTRIBUTION BUS 2B

Photos

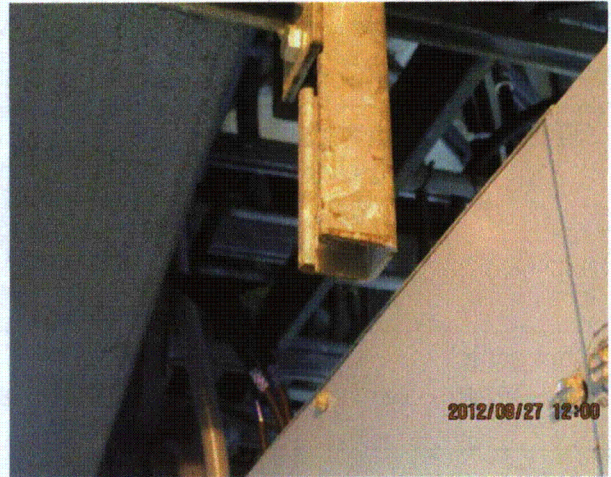


LaSalle Unit 2 062 (10)

LaSalle Unit 2 062 (1)



LaSalle Unit 2 062 (11)



LaSalle Unit 2 062 (12)

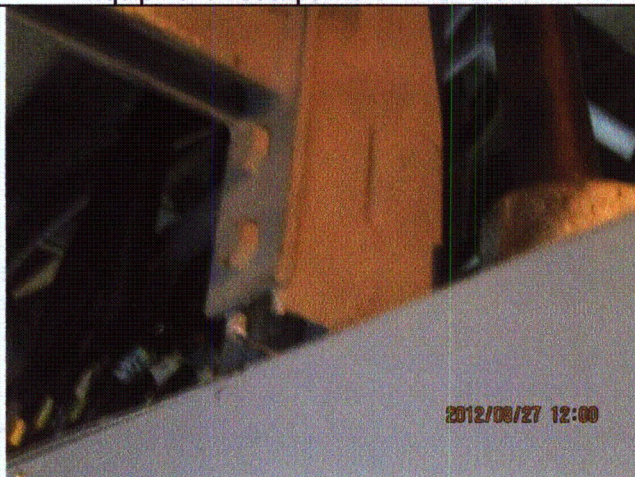
Status: Y N U

Seismic Walkdown Checklist (SWC)

Equipment ID No.: 2DC15E

Equipment Class: (14) Distribution Panels

Equipment Description: DIV II 125VDC DISTRIBUTION BUS 2B



LaSalle Unit 2 062 (13)



LaSalle Unit 2 062 (14)



LaSalle Unit 2 062 (2)



LaSalle Unit 2 062 (3)

Status: Y N U

Seismic Walkdown Checklist (SWC)

Equipment ID No.: 2DC15E

Equipment Class: (14) Distribution Panels

Equipment Description: DIV II 125VDC DISTRIBUTION BUS 2B



LaSalle Unit 2 062 (4)



LaSalle Unit 2 062 (5)

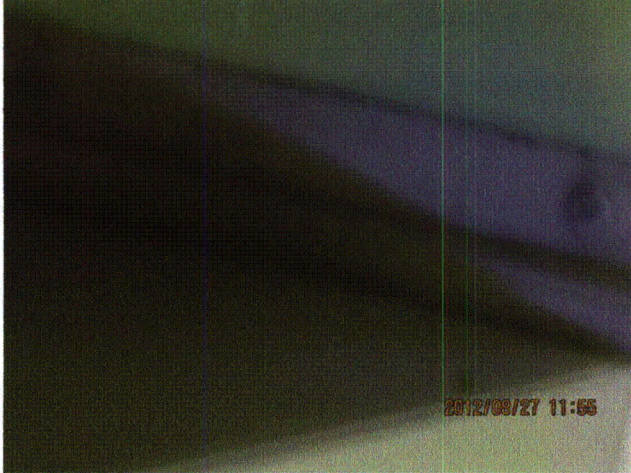
Status: Y N U

Seismic Walkdown Checklist (SWC)

Equipment ID No.: 2DC15E

Equipment Class: (14) Distribution Panels

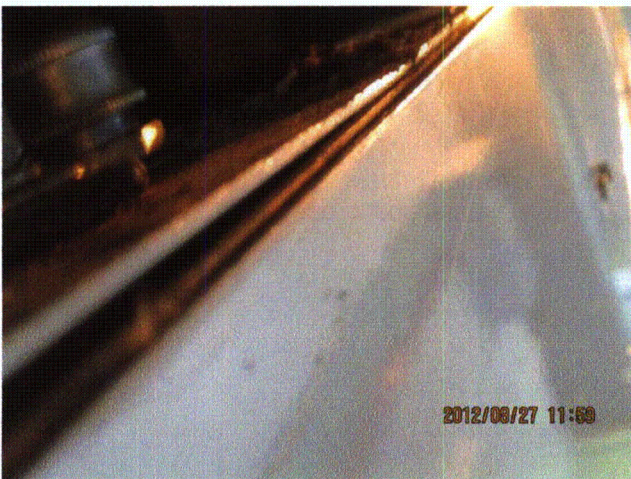
Equipment Description: DIV II 125VDC DISTRIBUTION BUS 2B



LaSalle Unit 2 062 (6)



LaSalle Unit 2 062 (7)



LaSalle Unit 2 062 (9)

Status: Y N U

Seismic Walkdown Checklist (SWC)

Equipment ID No.: 2DC16E

Equipment Class: (16) Inverters

Equipment Description: DIV II 125VDC BATTERY CHARGER 2BB

Project: LaSalle 2 SWEL

Location (Bldg, Elev, Room/Area): AB, 731.00 ft, ALL

Manufacturer/Model:

Instructions for Completing Checklist

This checklist may be used to document the results of the Seismic Walkdown of an item of equipment on the SWEL. The space below each of the following questions may be used to record the results of judgments and findings. Additional space is provided at the end of this checklist for documenting other comments.

Anchorage

1. Is anchorage configuration verification required (i.e., is the item one of the 50% of SWEL items requiring such verification)? Yes

2. Is the anchorage free of bent, broken, missing or loose hardware? Yes

3. Is the anchorage free of corrosion that is more than mild surface oxidation? Yes

4. Is the anchorage free of visible cracks in the concrete near the anchors? Yes

5. Is the anchorage configuration consistent with plant documentation? (Note: This question only applies if the item is one of the 50% for which an anchorage configuration verification is required.) Yes
Anchorage shown on drawing 1E-2-3445, Rev. AD.

6. Based on the above anchorage evaluations, is the anchorage free of potentially adverse seismic conditions? Yes

Status: Y N U

Seismic Walkdown Checklist (SWC)

Equipment ID No.: 2DC16E

Equipment Class: (16) Inverters

Equipment Description: DIV II 125VDC BATTERY CHARGER 2BB

Interaction Effects

- | | |
|---|-----|
| 7. Are soft targets free from impact by nearby equipment or structures? | Yes |
| 8. Are overhead equipment, distribution systems, ceiling tiles and lighting, and masonry block walls not likely to collapse onto the equipment? | Yes |
| 9. Do attached lines have adequate flexibility to avoid damage? | Yes |
| 10. Based on the above seismic interaction evaluations, is equipment free of potentially adverse seismic interaction effects? | Yes |

Other Adverse Conditions

- | | |
|--|-----|
| 11. Have you looked for and found no adverse seismic conditions that could adversely affect the safety functions of the equipment? | Yes |
|--|-----|

Comments

Seismic Walkdown Team: D. Carter & J. Griffith - 8/27/2012

Evaluated by:	<u><i>David Carter</i></u> David Carter	Date:	<u>10/17/2012</u>
	<u><i>James D. Griffith</i></u> James Griffith		<u>10/17/2012</u>

Status: Y N U

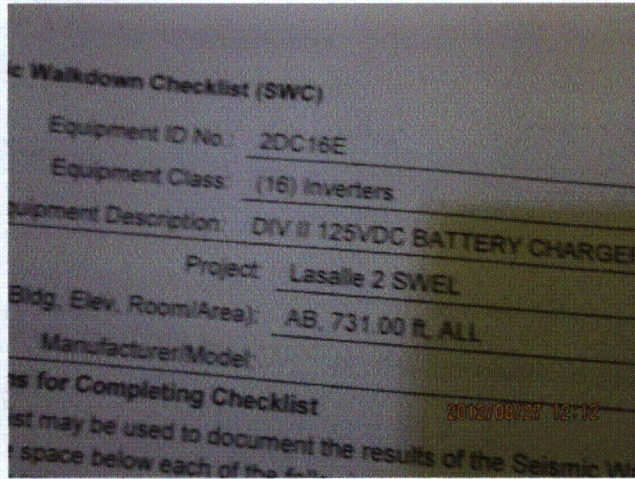
Seismic Walkdown Checklist (SWC)

Equipment ID No.: 2DC16E

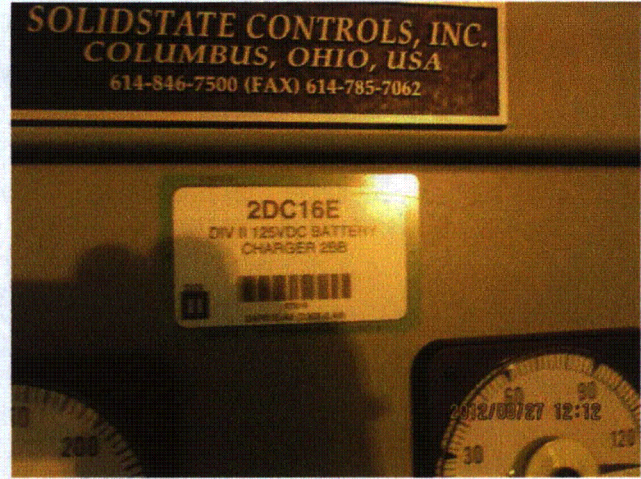
Equipment Class: (16) Inverters

Equipment Description: DIV II 125VDC BATTERY CHARGER 2BB

Photos



LaSalle Unit 2 080 (1)



LaSalle Unit 2 080 (2)



LaSalle Unit 2 080 (3)



LaSalle Unit 2 080 (4)

Status: Y N U

Seismic Walkdown Checklist (SWC)

Equipment ID No.: 2DG011

Equipment Class: (8) Motor-Operated and Solenoid-Operated Valves

Equipment Description: 2A DG COOLING WTR STRNR BACKWASH OTLT

Project: LaSalle 2 SWEL

Location (Bldg, Elev, Room/Area): DG, 674.00 ft, ALL

Manufacturer/Model:

Instructions for Completing Checklist

This checklist may be used to document the results of the Seismic Walkdown of an item of equipment on the SWEL. The space below each of the following questions may be used to record the results of judgments and findings. Additional space is provided at the end of this checklist for documenting other comments.

Anchorage

1. Is anchorage configuration verification required (i.e., is the item one of the 50% of SWEL items requiring such verification)? No

2. Is the anchorage free of bent, broken, missing or loose hardware? Not Applicable

3. Is the anchorage free of corrosion that is more than mild surface oxidation? Not Applicable

4. Is the anchorage free of visible cracks in the concrete near the anchors? Not Applicable

5. Is the anchorage configuration consistent with plant documentation? (Note: This question only applies if the item is one of the 50% for which an anchorage configuration verification is required.) Not Applicable

6. Based on the above anchorage evaluations, is the anchorage free of potentially adverse seismic conditions? Yes

Status: Y N U

Seismic Walkdown Checklist (SWC)

Equipment ID No.: 2DG011

Equipment Class: (8) Motor-Operated and Solenoid-Operated Valves

Equipment Description: 2A DG COOLING WTR STRNR BACKWASH OTLT

Interaction Effects

7. Are soft targets free from impact by nearby equipment or structures? Yes

8. Are overhead equipment, distribution systems, ceiling tiles and lighting, and masonry block walls not likely to collapse onto the equipment? Yes
Overhead light fixtures judged to be acceptable.

9. Do attached lines have adequate flexibility to avoid damage? Yes

10. Based on the above seismic interaction evaluations, is equipment free of potentially adverse seismic interaction effects? Yes

Other Adverse Conditions

11. Have you looked for and found no adverse seismic conditions that could adversely affect the safety functions of the equipment? Yes

Comments

Seismic Walkdown Team: D. Carter & J. Griffith - 8/28/2012

Evaluated by:  David Carter Date: 10/17/2012

 James D. Griffith 10/17/2012

Status: Y N U

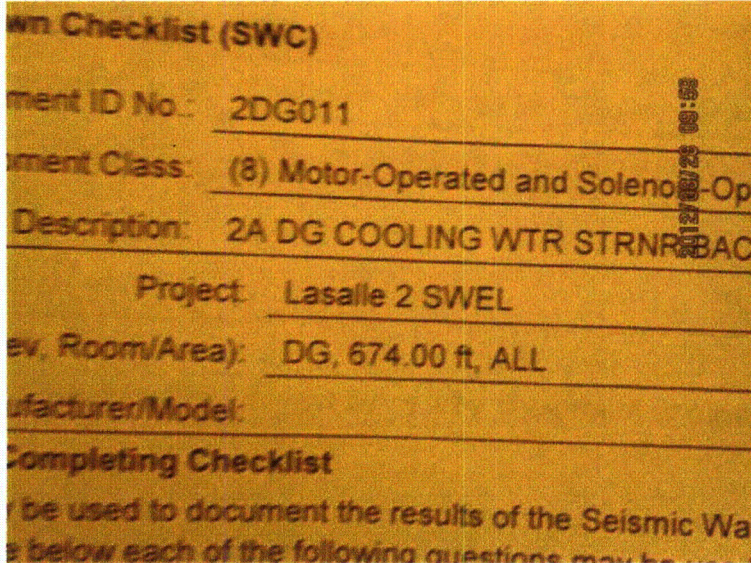
Seismic Walkdown Checklist (SWC)

Equipment ID No.: 2DG011

Equipment Class: (8) Motor-Operated and Solenoid-Operated Valves

Equipment Description: 2A DG COOLING WTR STRNR BACKWASH OTLT

Photos



LaSalle 8-28-12 124 (2)

LaSalle 8-28-12 124 (1)

Status: Y N U

Seismic Walkdown Checklist (SWC)

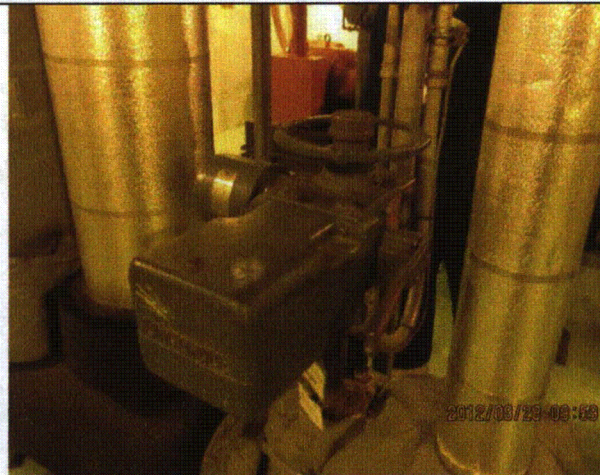
Equipment ID No.: 2DG011

Equipment Class: (8) Motor-Operated and Solenoid-Operated Valves

Equipment Description: 2A DG COOLING WTR STRNR BACKWASH OTLT



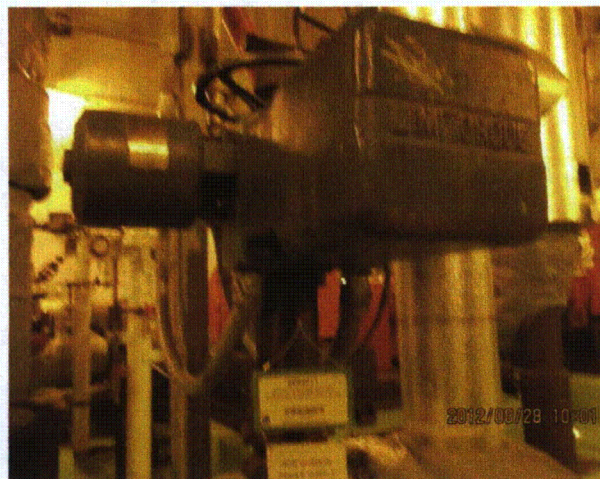
LaSalle 8-28-12 124 (3)



LaSalle 8-28-12 124 (4)



LaSalle 8-28-12 124 (5)



LaSalle 8-28-12 124 (6)

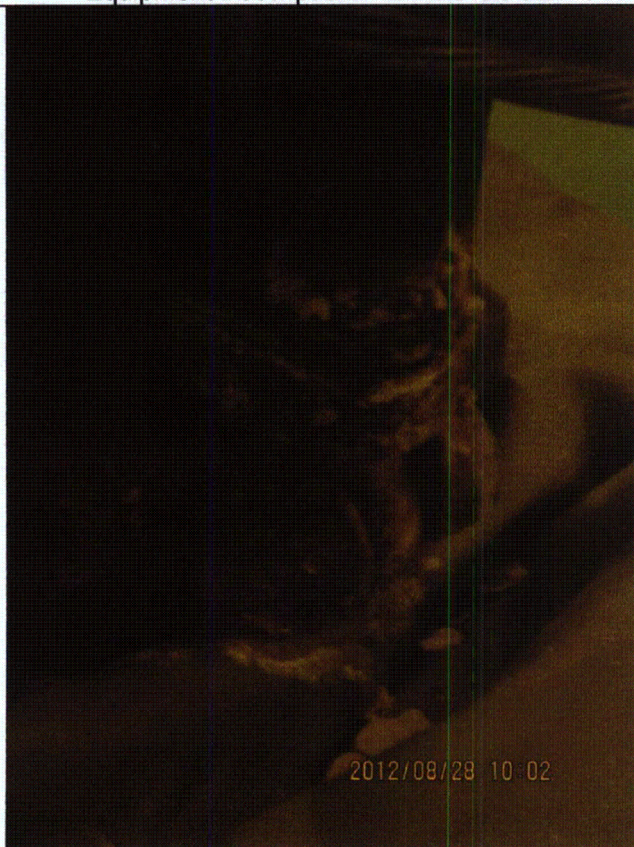
Status: Y N U

Seismic Walkdown Checklist (SWC)

Equipment ID No.: 2DG011

Equipment Class: (8) Motor-Operated and Solenoid-Operated Valves

Equipment Description: 2A DG COOLING WTR STRNR BACKWASH OTLT



LaSalle 8-28-12 124 (7)

Status: Y N U

Seismic Walkdown Checklist (SWC)

Equipment ID No.: 2DG01A

Equipment Class: (21) Tanks and Heat Exchangers

Equipment Description: 2A DG COOLER

Project: LaSalle 2 SWEL

Location (Bldg, Elev, Room/Area): DG, 710.00 ft, ALL

Manufacturer/Model:

Instructions for Completing Checklist

This checklist may be used to document the results of the Seismic Walkdown of an item of equipment on the SWEL. The space below each of the following questions may be used to record the results of judgments and findings. Additional space is provided at the end of this checklist for documenting other comments.

Anchorage

1. Is anchorage configuration verification required (i.e., is the item one of the 50% of SWEL items requiring such verification)? No
2 welded brackets (1 on each end) bolted to DG skid with 2 bolts at each bracket.

2. Is the anchorage free of bent, broken, missing or loose hardware? Yes

3. Is the anchorage free of corrosion that is more than mild surface oxidation? Yes

4. Is the anchorage free of visible cracks in the concrete near the anchors? Not Applicable
Cooler is attached to DG skid.

5. Is the anchorage configuration consistent with plant documentation? (Note: This question only applies if the item is one of the 50% for which an anchorage configuration verification is required.) Not Applicable

6. Based on the above anchorage evaluations, is the anchorage free of potentially adverse seismic conditions? Yes

Status: Y N U

Seismic Walkdown Checklist (SWC)

Equipment ID No.: 2DG01A

Equipment Class: (21) Tanks and Heat Exchangers

Equipment Description: 2A DG COOLER

Interaction Effects

7. Are soft targets free from impact by nearby equipment or structures? Yes
8. Are overhead equipment, distribution systems, ceiling tiles and lighting, and masonry block walls not likely to collapse onto the equipment? Yes
Overhead light fixtures judged to be acceptable.
9. Do attached lines have adequate flexibility to avoid damage? Yes
10. Based on the above seismic interaction evaluations, is equipment free of potentially adverse seismic interaction effects? Yes

Other Adverse Conditions

11. Have you looked for and found no adverse seismic conditions that could adversely affect the safety functions of the equipment? Yes

Comments

Seismic Walkdown Team: D. Carter & J. Griffith - 8/28/2012

Evaluated by: *David Carter* David Carter Date: 10/17/2012
James D. Griffith James Griffith 10/17/2012

Status: Y N U

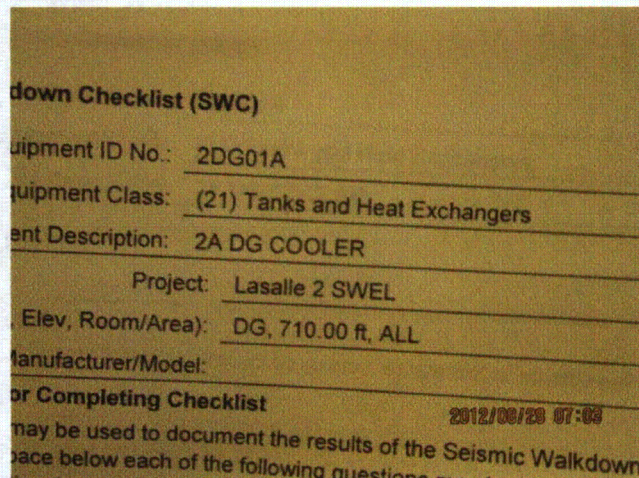
Seismic Walkdown Checklist (SWC)

Equipment ID No.: 2DG01A

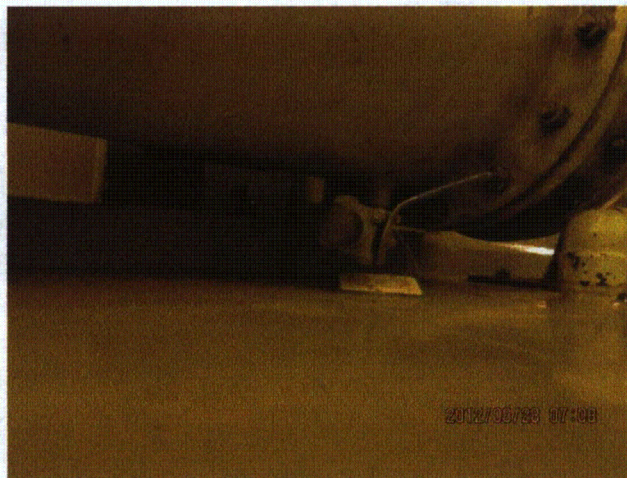
Equipment Class: (21) Tanks and Heat Exchangers

Equipment Description: 2A DG COOLER

Photos



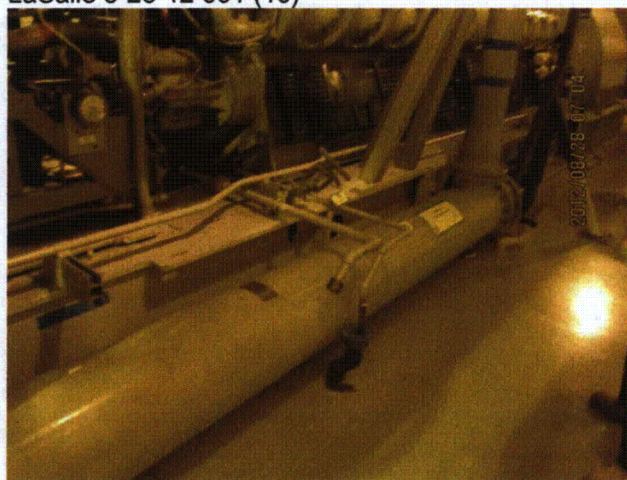
LaSalle 8-28-12 001 (1)



LaSalle 8-28-12 001 (10)



LaSalle 8-28-12 001 (2)



LaSalle 8-28-12 001 (3)

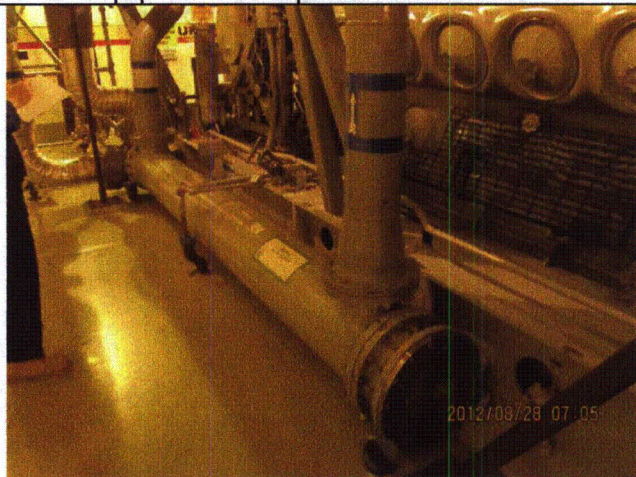
Status: Y N U

Seismic Walkdown Checklist (SWC)

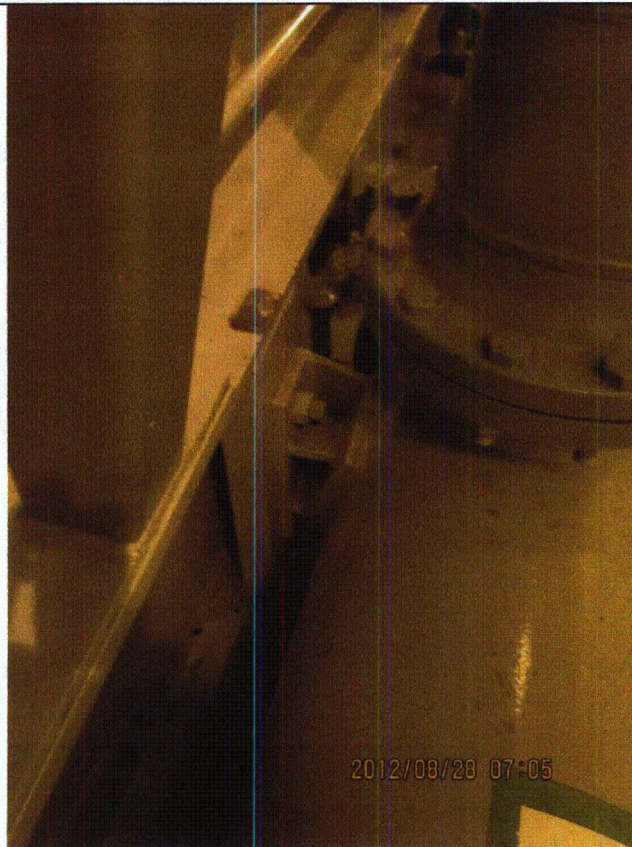
Equipment ID No.: 2DG01A

Equipment Class: (21) Tanks and Heat Exchangers

Equipment Description: 2A DG COOLER



LaSalle 8-28-12 001 (4)



LaSalle 8-28-12 001 (5)

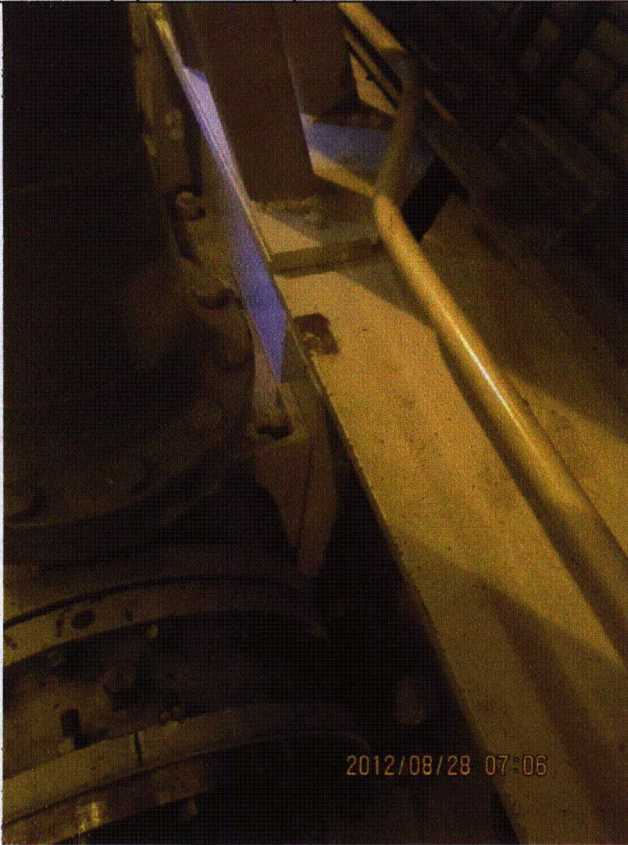
Status: Y N U

Seismic Walkdown Checklist (SWC)

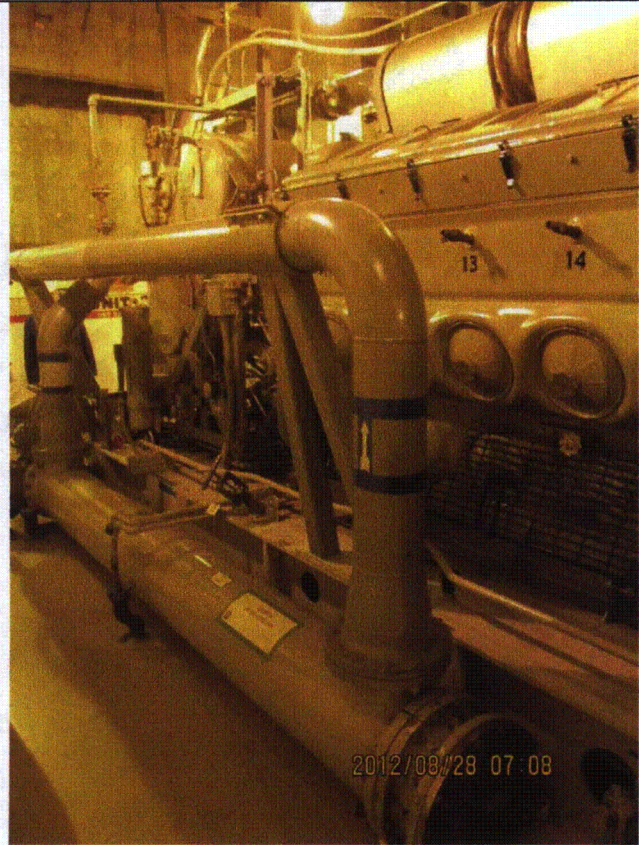
Equipment ID No.: 2DG01A

Equipment Class: (21) Tanks and Heat Exchangers

Equipment Description: 2A DG COOLER



LaSalle 8-28-12 001 (6)



LaSalle 8-28-12 001 (7)

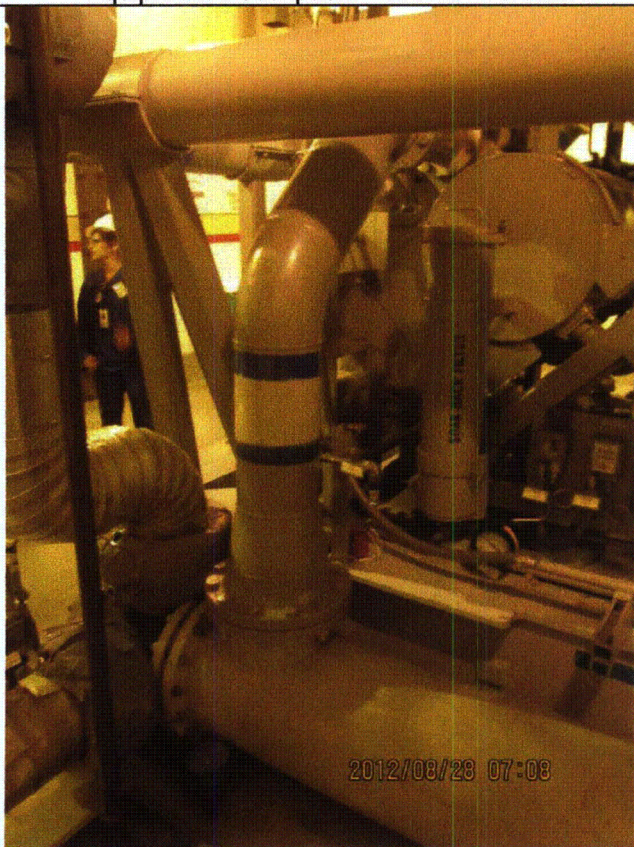
Status: Y N U

Seismic Walkdown Checklist (SWC)

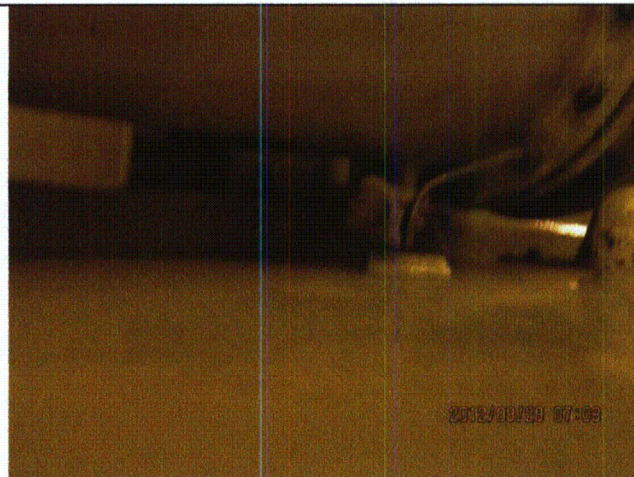
Equipment ID No.: 2DG01A

Equipment Class: (21) Tanks and Heat Exchangers

Equipment Description: 2A DG COOLER



LaSalle 8-28-12 001 (8)



LaSalle 8-28-12 001 (9)

Status: Y N U

Seismic Walkdown Checklist (SWC)

Equipment ID No.: 2DG01F

Equipment Class: (0) Other

Equipment Description: 2A DG COOLING WATER STRAINER

Project: LaSalle 2 SWEL

Location (Bldg, Elev, Room/Area): DG, 674.00 ft, ALL

Manufacturer/Model:

Instructions for Completing Checklist

This checklist may be used to document the results of the Seismic Walkdown of an item of equipment on the SWEL. The space below each of the following questions may be used to record the results of judgments and findings. Additional space is provided at the end of this checklist for documenting other comments.

Anchorage

1. Is anchorage configuration verification required (i.e., is the item one of the 50% of SWEL items requiring such verification)? Yes
Grout pads replaced by large base plates and judged to be acceptable.

2. Is the anchorage free of bent, broken, missing or loose hardware? Yes

3. Is the anchorage free of corrosion that is more than mild surface oxidation? Yes

4. Is the anchorage free of visible cracks in the concrete near the anchors? Yes

5. Is the anchorage configuration consistent with plant documentation? (Note: This question only applies if the item is one of the 50% for which an anchorage configuration verification is required.) Yes
Anchorage shown on drawings M-1573, Rev. G and M-1591, Sheet 11, Rev. E.

6. Based on the above anchorage evaluations, is the anchorage free of potentially adverse seismic conditions? Yes

Status: Y N U

Seismic Walkdown Checklist (SWC)

Equipment ID No.: 2DG01F

Equipment Class: (0) Other

Equipment Description: 2A DG COOLING WATER STRAINER

Interaction Effects

7. Are soft targets free from impact by nearby equipment or structures? Yes

Tubing from gauges in contact with soft insulation on strainer and judged to be acceptable.

8. Are overhead equipment, distribution systems, ceiling tiles and lighting, and masonry block walls not likely to collapse onto the equipment? Yes

*Relocated hanging handwheel during walkdown to avoid contact with motor.
Overhead light fixtures judged to be acceptable.*

9. Do attached lines have adequate flexibility to avoid damage? Yes

10. Based on the above seismic interaction evaluations, is equipment free of potentially adverse seismic interaction effects? Yes

Other Adverse Conditions

11. Have you looked for and found no adverse seismic conditions that could adversely affect the safety functions of the equipment? Yes

Comments

Seismic Walkdown Team: D. Carter & J. Griffith - 8/28/2012

Evaluated by:  David Carter

Date: 10/17/2012

 James Griffith

10/17/2012

Status: Y N U

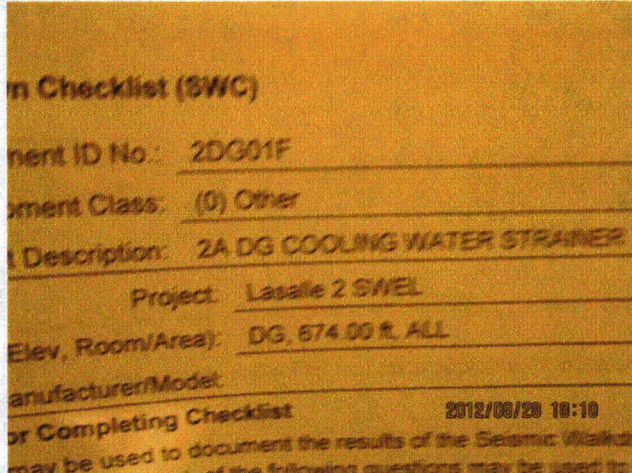
Seismic Walkdown Checklist (SWC)

Equipment ID No.: 2DG01F

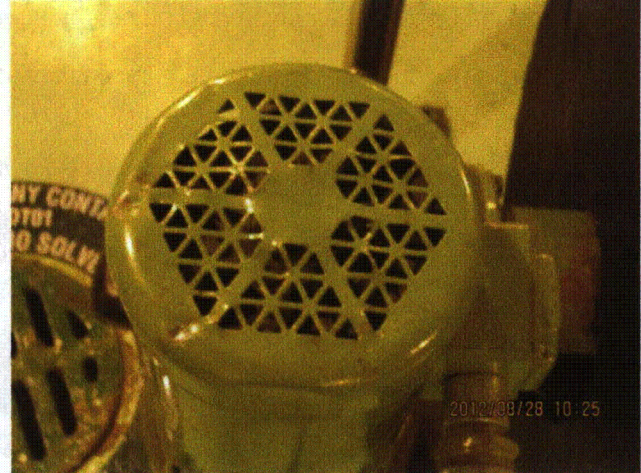
Equipment Class: (0) Other

Equipment Description: 2A DG COOLING WATER STRAINER

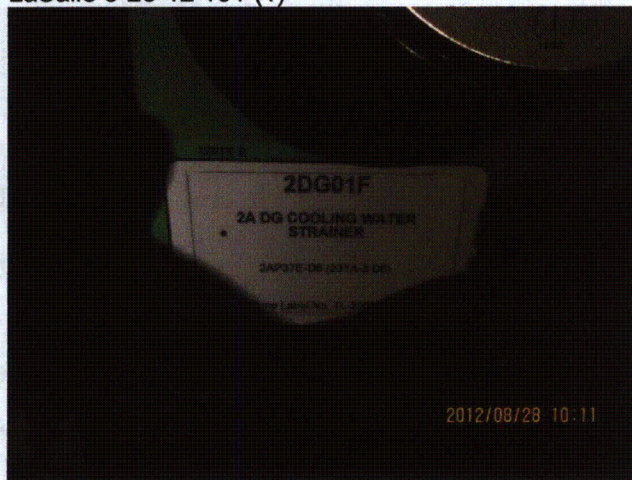
Photos



LaSalle 8-28-12 131 (1)



LaSalle 8-28-12 131 (10)



LaSalle 8-28-12 131 (2)



LaSalle 8-28-12 131 (3)

Status: Y N U

Seismic Walkdown Checklist (SWC)

Equipment ID No.: 2DG01F

Equipment Class: (0) Other

Equipment Description: 2A DG COOLING WATER STRAINER



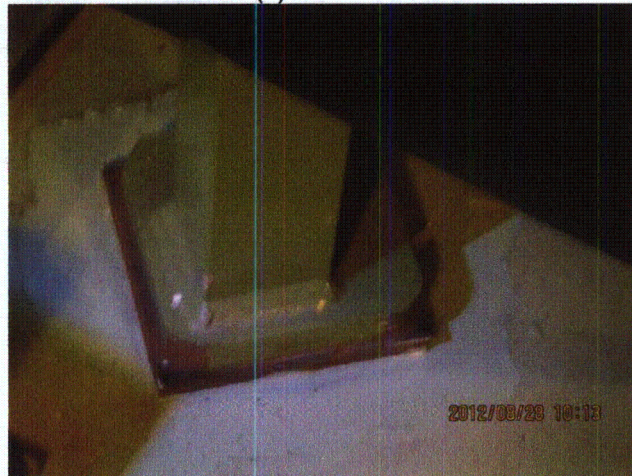
LaSalle 8-28-12 131 (4)



LaSalle 8-28-12 131 (5)



LaSalle 8-28-12 131 (6)



LaSalle 8-28-12 131 (7)

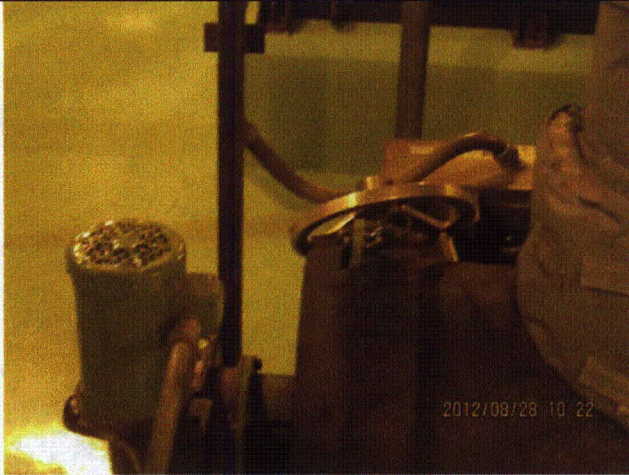
Status: Y N U

Seismic Walkdown Checklist (SWC)

Equipment ID No.: 2DG01F

Equipment Class: (0) Other

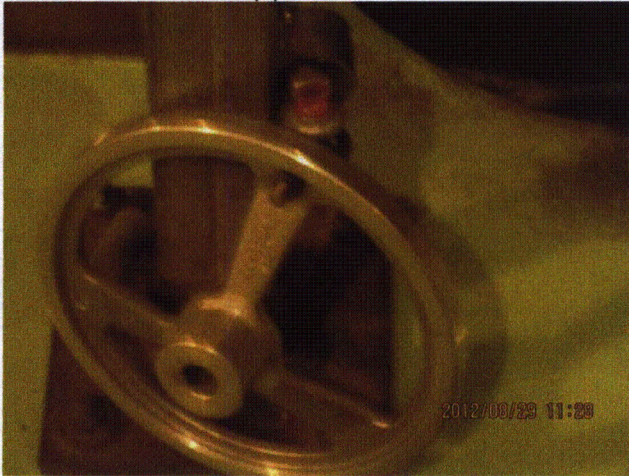
Equipment Description: 2A DG COOLING WATER STRAINER



LaSalle 8-28-12 131 (8)



LaSalle 8-28-12 131 (9)



LaSalle 8-29-12 140

Status: Y N U

Seismic Walkdown Checklist (SWC)

Equipment ID No.: 2DG01K

Equipment Class: (17) Engine-Generators

Equipment Description: 2A DIESEL GENERATOR

Project: LaSalle 2 SWEL

Location (Bldg, Elev, Room/Area): DG, 710.00 ft, ALL

Manufacturer/Model:

Instructions for Completing Checklist

This checklist may be used to document the results of the Seismic Walkdown of an item of equipment on the SWEL. The space below each of the following questions may be used to record the results of judgments and findings. Additional space is provided at the end of this checklist for documenting other comments.

Anchorage

1. Is anchorage configuration verification required (i.e., is the item one of the 50% of SWEL items requiring such verification)? Yes

2. Is the anchorage free of bent, broken, missing or loose hardware? Yes

1 anchor (SE corner anchor at generator end) with missing nut. 33 of 34 anchors have nuts in place. Judged to be acceptable. See IR 1405600 and 1406114.

Minor lack of thread engagement at several other anchors judged to be acceptable.
3. Is the anchorage free of corrosion that is more than mild surface oxidation? Yes

4. Is the anchorage free of visible cracks in the concrete near the anchors? Yes

Minor shrinkage cracking in floor judged to be acceptable.

5. Is the anchorage configuration consistent with plant documentation? (Note: This question only applies if the item is one of the 50% for which an anchorage configuration verification is required.) Yes

Anchorage is shown on drawings M-1569, Rev. J and M-1591, Sheet 4, Rev. J.

6. Based on the above anchorage evaluations, is the anchorage free of potentially adverse seismic conditions? Yes

Status: Y N U

Seismic Walkdown Checklist (SWC)

Equipment ID No.: 2DG01K

Equipment Class: (17) Engine-Generators

Equipment Description: 2A DIESEL GENERATOR

Interaction Effects

7. Are soft targets free from impact by nearby equipment or structures? Yes

Pipe flange has 1/2" gap to DG local control panel mounted on skid. Judged to be acceptable.

Minor contact between conduits and tubes on same DG skid. Judged to be acceptable.

8. Are overhead equipment, distribution systems, ceiling tiles and lighting, and masonry block walls not likely to collapse onto the equipment? Yes

Overhead light fixtures judged to be acceptable.

9. Do attached lines have adequate flexibility to avoid damage? Yes

10. Based on the above seismic interaction evaluations, is equipment free of potentially adverse seismic interaction effects? Yes

Other Adverse Conditions

11. Have you looked for and found no adverse seismic conditions that could adversely affect the safety functions of the equipment? Yes

Comments

Seismic Walkdown Team: D. Carter & J. Griffith - 8/28/2012

Evaluated by:  David Carter Date: 10/25/2012

 James D. Griffith 10/25/2012

Status: Y N U

Seismic Walkdown Checklist (SWC)

Equipment ID No.: 2DG01K

Equipment Class: (17) Engine-Generators

Equipment Description: 2A DIESEL GENERATOR

Photos



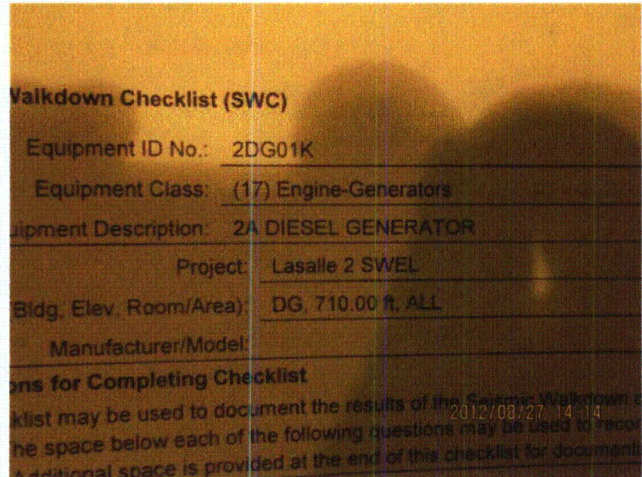
LaSalle 8-29-12 132



LaSalle 8-29-12 133



LaSalle 8-29-12 134



LaSalle Unit 2 130 (1)

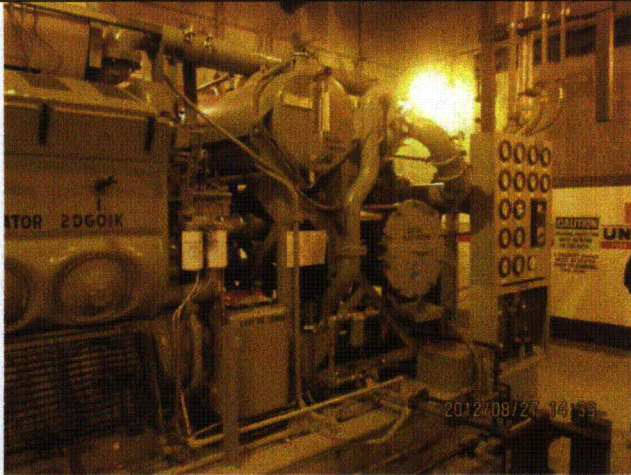
Status: Y N U

Seismic Walkdown Checklist (SWC)

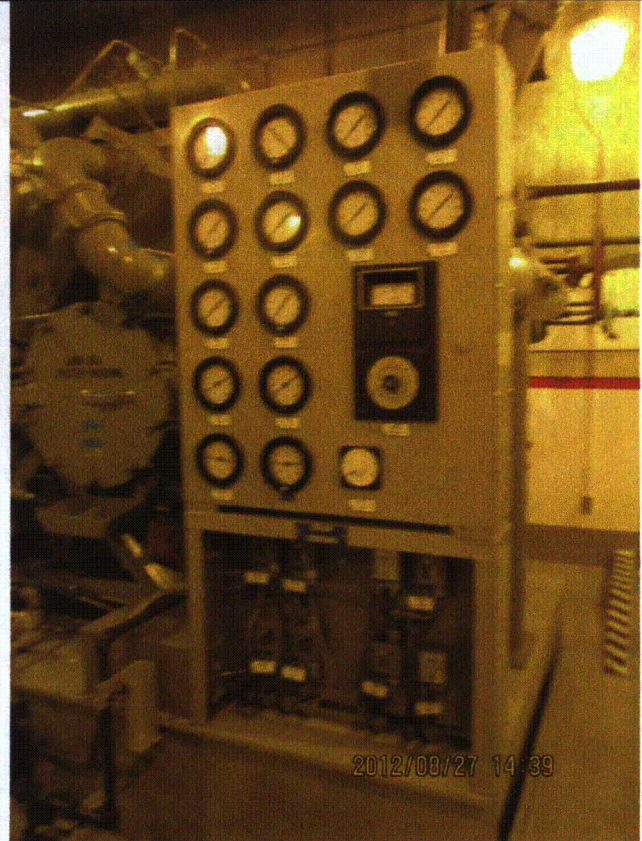
Equipment ID No.: 2DG01K

Equipment Class: (17) Engine-Generators

Equipment Description: 2A DIESEL GENERATOR



LaSalle Unit 2 130 (10)



LaSalle Unit 2 130 (11)

Status: Y N U

Seismic Walkdown Checklist (SWC)

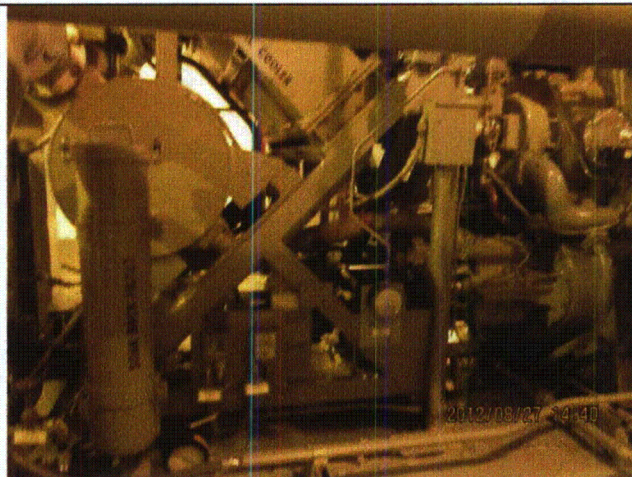
Equipment ID No.: 2DG01K

Equipment Class: (17) Engine-Generators

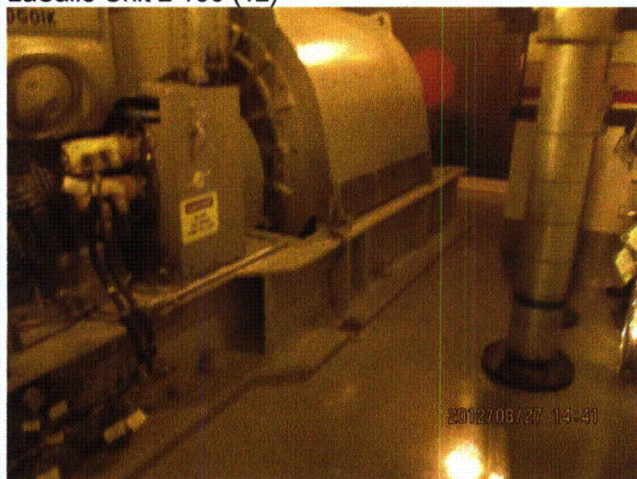
Equipment Description: 2A DIESEL GENERATOR



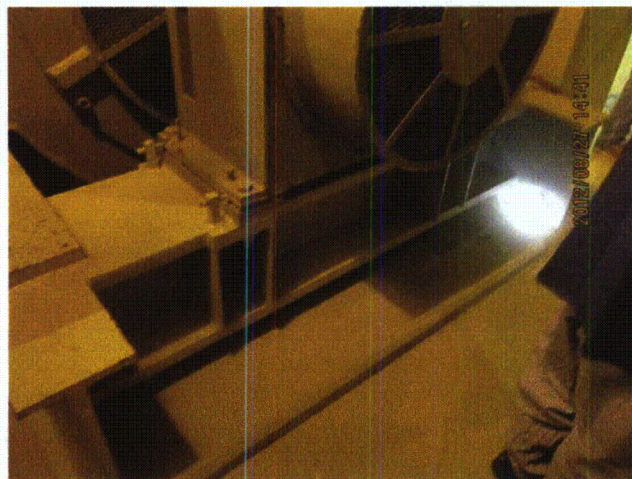
LaSalle Unit 2 130 (12)



LaSalle Unit 2 130 (13)



LaSalle Unit 2 130 (14)



LaSalle Unit 2 130 (15)

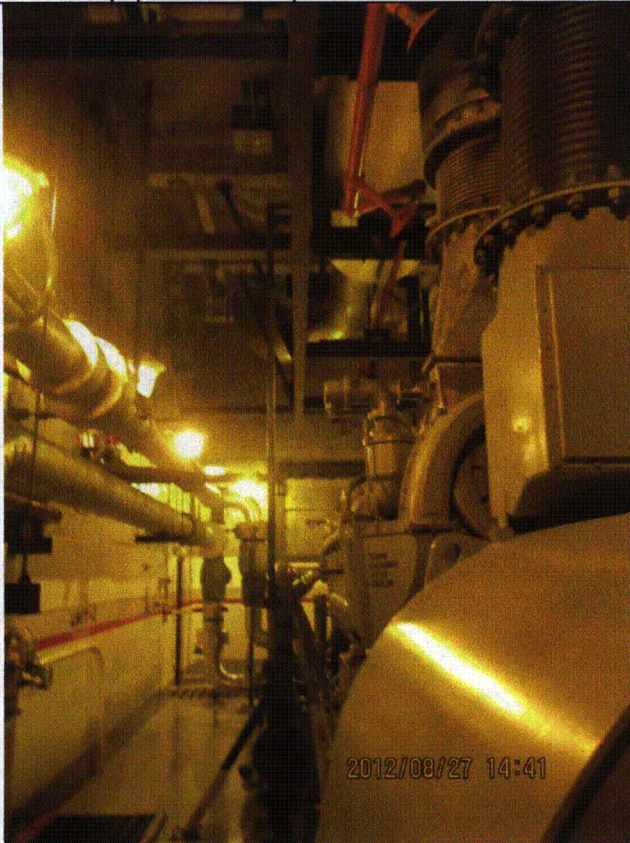
Status: Y N U

Seismic Walkdown Checklist (SWC)

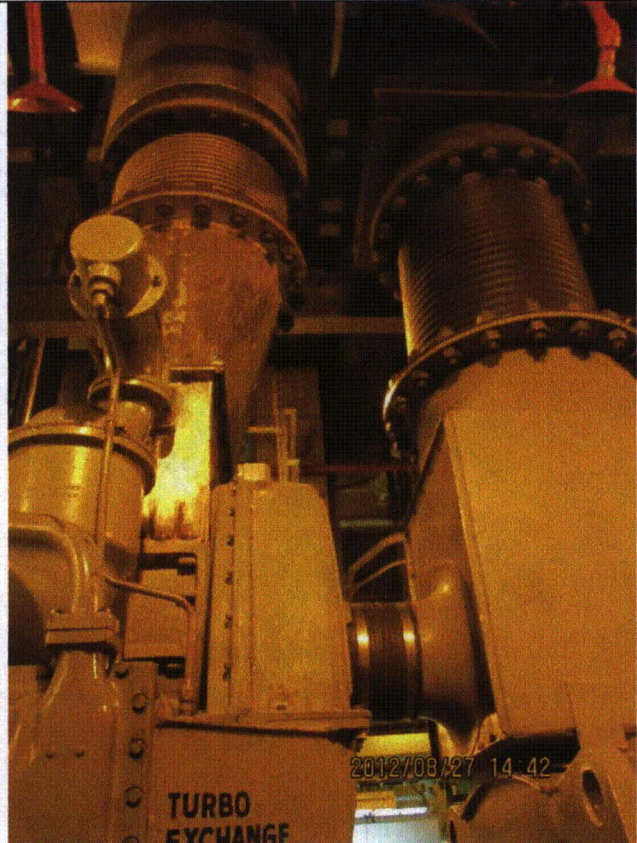
Equipment ID No.: 2DG01K

Equipment Class: (17) Engine-Generators

Equipment Description: 2A DIESEL GENERATOR



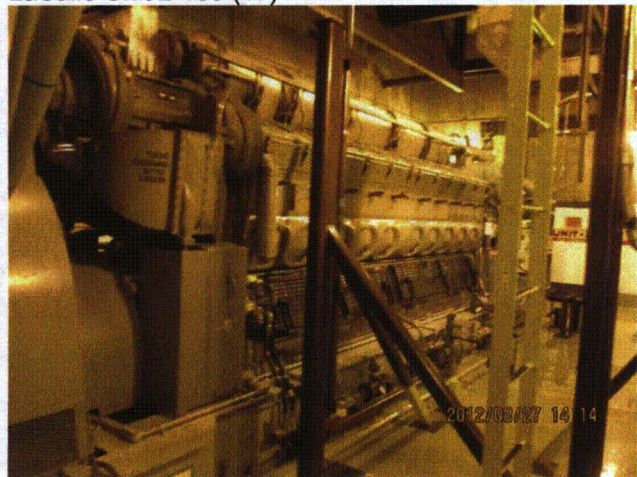
LaSalle Unit 2 130 (16)



LaSalle Unit 2 130 (17)



LaSalle Unit 2 130 (2)



LaSalle Unit 2 130 (3)

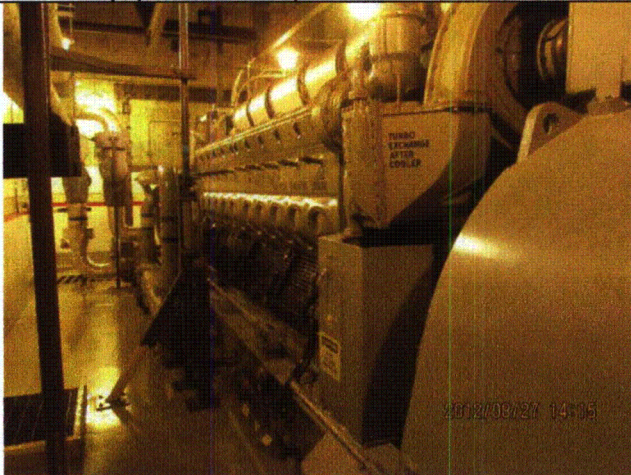
Status: Y N U

Seismic Walkdown Checklist (SWC)

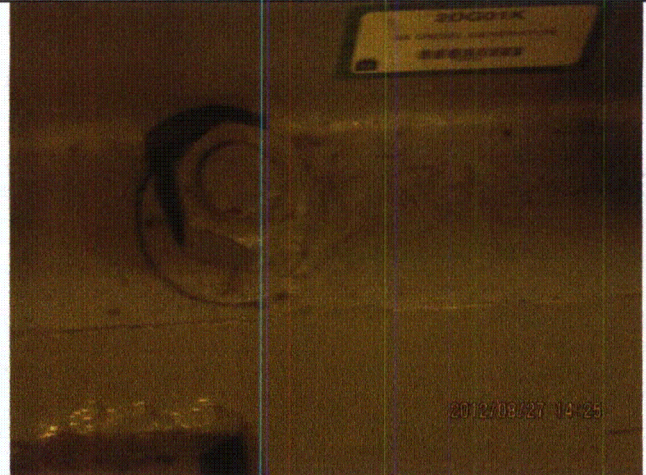
Equipment ID No.: 2DG01K

Equipment Class: (17) Engine-Generators

Equipment Description: 2A DIESEL GENERATOR



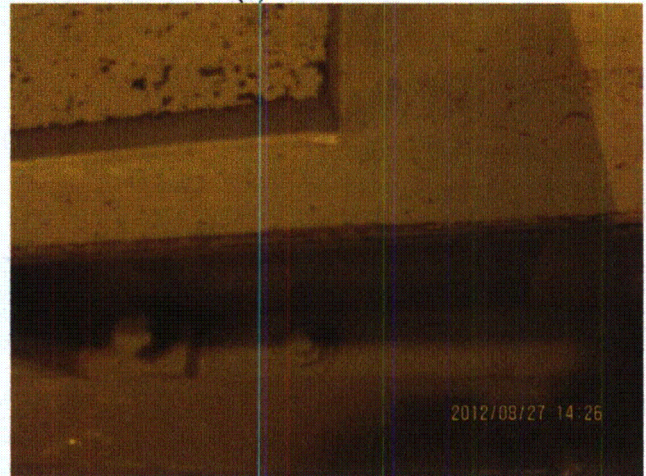
LaSalle Unit 2 130 (4)



LaSalle Unit 2 130 (5)



LaSalle Unit 2 130 (6)



LaSalle Unit 2 130 (7)

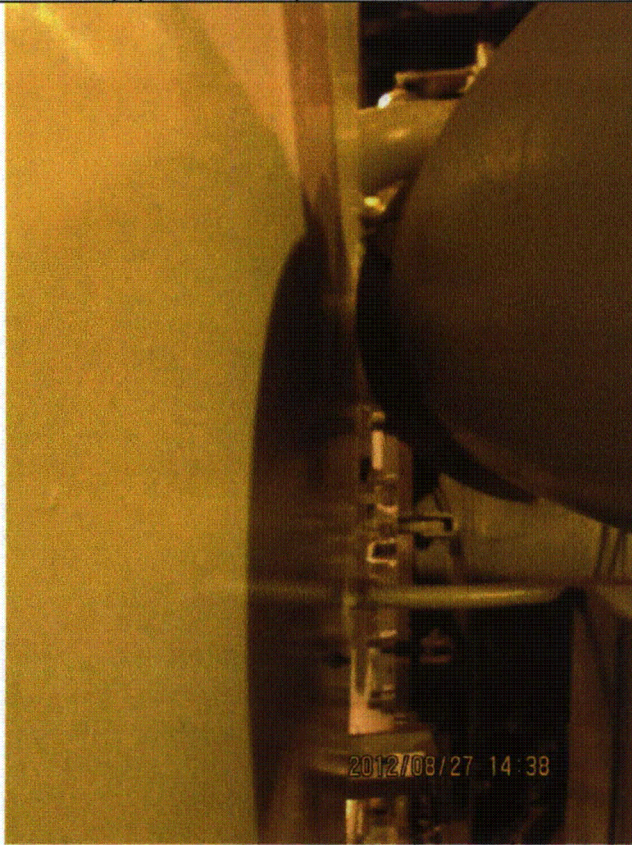
Status: Y N U

Seismic Walkdown Checklist (SWC)

Equipment ID No.: 2DG01K

Equipment Class: (17) Engine-Generators

Equipment Description: 2A DIESEL GENERATOR



LaSalle Unit 2 130 (8)



LaSalle Unit 2 130 (9)