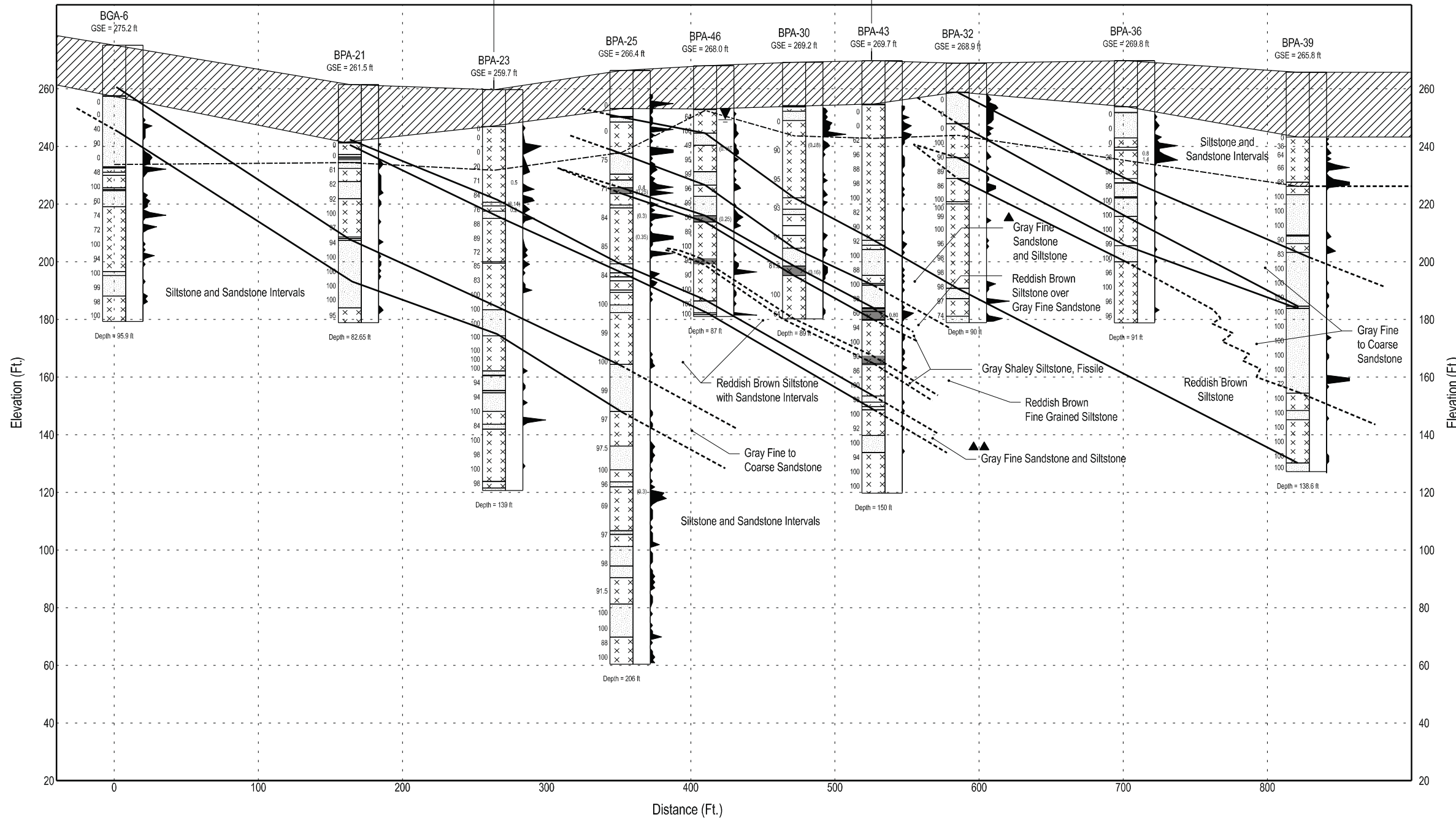


Plant South (S65W)

Plant North (N65E)

Extent of Nuclear Island -
Excavation to 220 Ft.

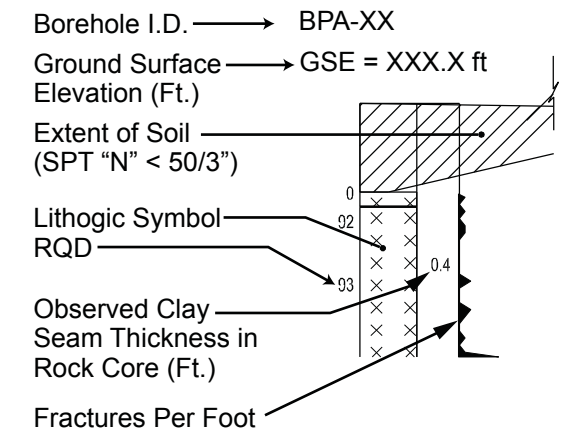


LEGEND

- ▲ HAR 3 Marker Bed A
- ▲▲ HAR 3 Marker Bed B
- ≡ Ground Water Level
- Interpreted Lithology Correlation
- Possible Lithology Correlation
- Top of Sound Rock
(See Table 2.5.4-201 for definition)
- ☐ Conglomerate
- ☐ Sandstone
- ▨ Shale
- ▨ Shaley Siltstone and Sandstone
- ☒ Siltstone
- ▨ Soil (N<50/3")

Vertical Scale: 1" = 40.0'
Horizontal Scale: 1" = 80.0'

DETAIL:



NOTES:

1. Clay seams or fracture zones with total clay thickness >0.1 ft. thick are shown at their approximate observed elevation. Values in parenthesis () indicate total clay thickness within fraction intervals.
2. See Table 2.5.4-201 for depths and descriptions of soil and top of sound rock.
3. See Figure 2.5.4-202 for Cross Section locations.

Progress Energy Carolinas
**Shearon Harris Nuclear Power Plant
 Units 2 and 3**
 Part 2, Final Safety Analysis Report
 New Hill, North Carolina

Stratigraphic Cross Section at HAR 3 -
 Plant South to North

FIGURE 2.5.4-205A Rev. 1