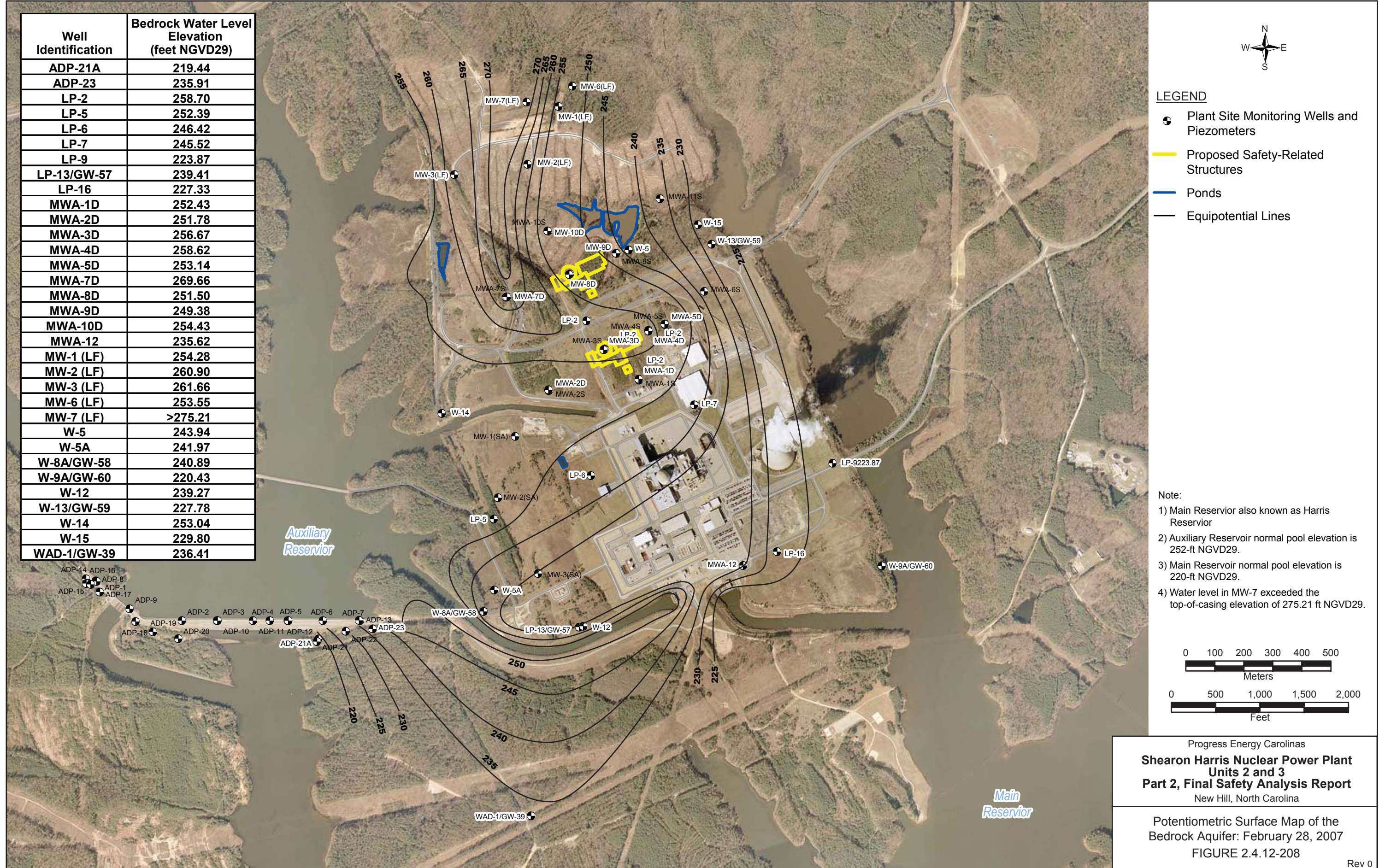


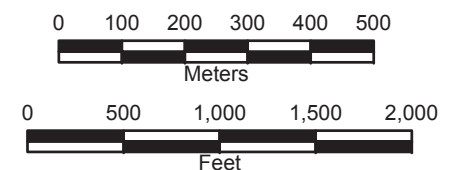
Well Identification	Bedrock Water Level Elevation (feet NGVD29)
ADP-21A	219.44
ADP-23	235.91
LP-2	258.70
LP-5	252.39
LP-6	246.42
LP-7	245.52
LP-9	223.87
LP-13/GW-57	239.41
LP-16	227.33
MWA-1D	252.43
MWA-2D	251.78
MWA-3D	256.67
MWA-4D	258.62
MWA-5D	253.14
MWA-7D	269.66
MWA-8D	251.50
MWA-9D	249.38
MWA-10D	254.43
MWA-12	235.62
MW-1 (LF)	254.28
MW-2 (LF)	260.90
MW-3 (LF)	261.66
MW-6 (LF)	253.55
MW-7 (LF)	>275.21
W-5	243.94
W-5A	241.97
W-8A/GW-58	240.89
W-9A/GW-60	220.43
W-12	239.27
W-13/GW-59	227.78
W-14	253.04
W-15	229.80
WAD-1/GW-39	236.41



- LEGEND**
- Plant Site Monitoring Wells and Piezometers
 - Proposed Safety-Related Structures
 - Ponds
 - Equipotential Lines

Note:

- 1) Main Reservoir also known as Harris Reservoir
- 2) Auxiliary Reservoir normal pool elevation is 252-ft NGVD29.
- 3) Main Reservoir normal pool elevation is 220-ft NGVD29.
- 4) Water level in MW-7 exceeded the top-of-casing elevation of 275.21 ft NGVD29.



Progress Energy Carolinas
**Shearon Harris Nuclear Power Plant
 Units 2 and 3**
Part 2, Final Safety Analysis Report
 New Hill, North Carolina

Potentiometric Surface Map of the
 Bedrock Aquifer: February 28, 2007
 FIGURE 2.4.12-208

Rev 0