

LEGEND

- OPEN WATER (FLAGGED)
- OPEN WATER (NOT FLAGGED)
- WETLAND BOUNDARY
- DATA POINT
- WETLAND FLAG
- PALUSTRINE SCrub-SHRUB (PSS)
- PALUSTRINE EMERGENT (PEM)
- PALUSTRINE FORESTED (PFO)

NOTICE:
 CONSTRUCTION SITE SAFETY IS THE SOLE RESPONSIBILITY OF THE CONTRACTOR. DUCKS UNLIMITED, INC. IS NOT RESPONSIBLE FOR THE SAFETY OF ANY PERSONS OR PROPERTY DURING THE CONSTRUCTION OF THE PROJECT. PERSONS ENGAGED IN THE WORK, NEARBY STRUCTURES OR OTHER PERSONS ON-SITE.
 ALL DATA INCLUDED HEREIN IS THE SOLE PROPERTY OF DUCKS UNLIMITED, INC. AND SHALL REMAIN THE PROPERTY OF DUCKS UNLIMITED, INC. ANY REUSE OR REPRODUCTION OF ANY PART OF THIS DOCUMENT WITHOUT THE WRITTEN PERMISSION OF DUCKS UNLIMITED, INC. IS STRICTLY PROHIBITED.
 DUCKS UNLIMITED, INC. ALL RIGHTS RESERVED. COPYRIGHT 2007 DUCKS UNLIMITED, INC.

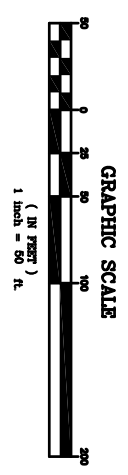
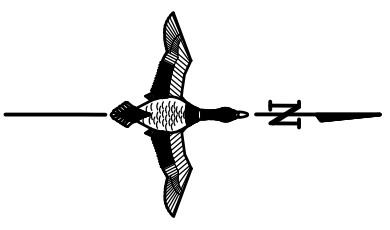
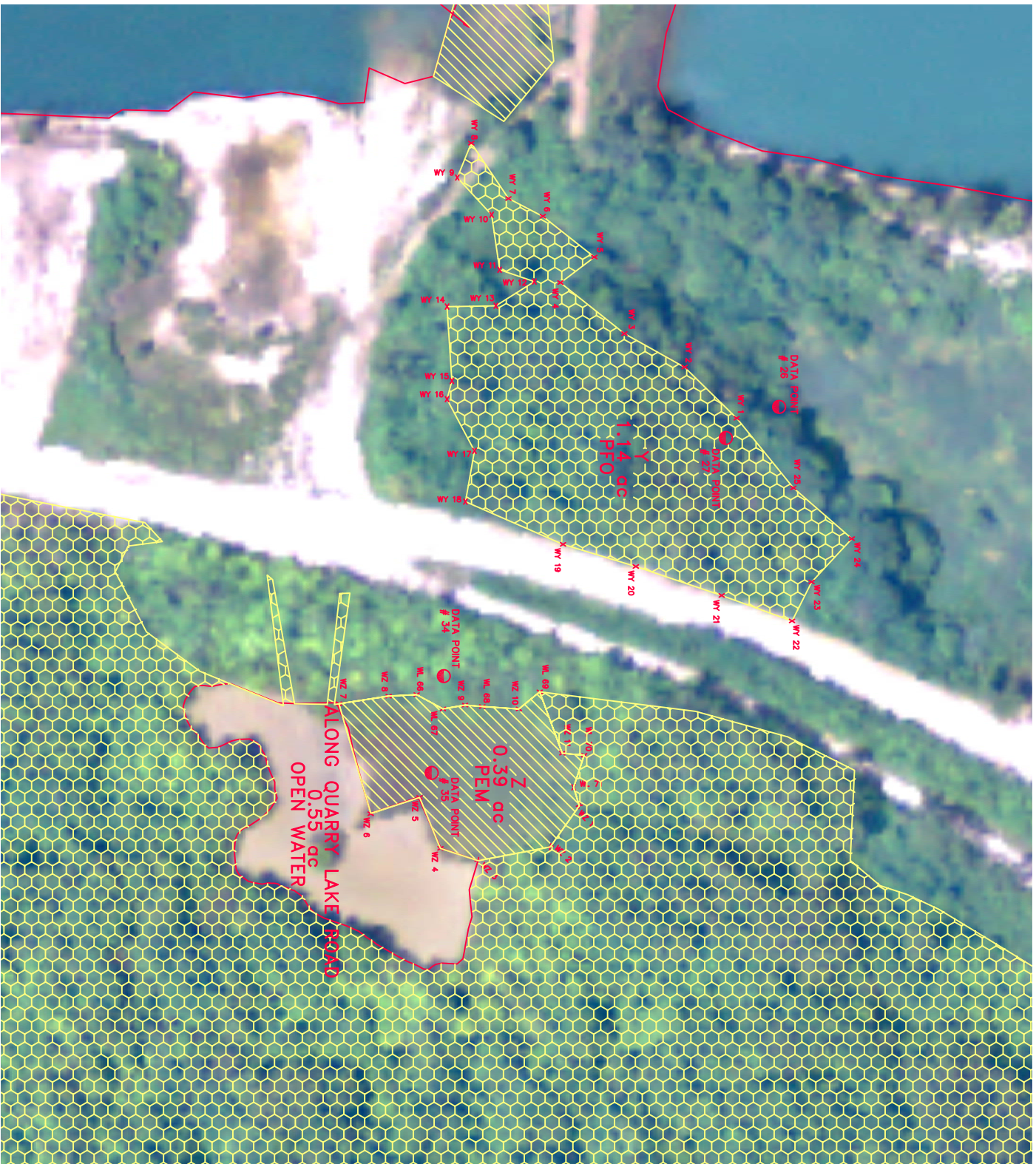
REVISIONS:

NO.	DATE	DESCRIPTION

WETLAND DELINEATION W, X
DTE FERMI II PLANT
MONROE COUNTY, MICHIGAN

Global Leader in Wetlands & Wildlife Conservation
GREAT LAKES/ATLANTIC REGIONAL OFFICE
 ANN ARBOR, MICHIGAN (734) 623-2000

CAD FILE: Wetland Delineation 50
 DESIGNED BY: --
 DRAWN BY: GB, DA
 SUBMITTED BY: GB, MW, PW
 BOOK NO. # 16 PAGE 13-19
 DATE: 7/7/08
 PROJECT NO.: US-MI-188-1
 GLARO-MIS-48-19



- LEGEND**
- OPEN WATER (FLAGGED)
 - OPEN WATER (NOT FLAGGED)
 - WETLAND BOUNDARY
 - DATA POINT
 - WETLAND FLAG
 - PALUSTRINE FORESTED (PFO)
 - PALUSTRINE SCRUB-SHRUB (PSS)
 - PALUSTRINE EMERGENT (PEM)
 - PALUSTRINE FORESTED (PFO)

NOTICE:
 CONSTRUCTION SITE SAFETY IS THE SOLE RESPONSIBILITY OF THE CONTRACTOR. DUCKS UNLIMITED, INC. AND ITS FIELD PERSONNEL ARE NOT TO BE HELD RESPONSIBLE FOR ANY INJURIES, DEATHS, OR DAMAGES, PERSONAL OR PROPERTY, INCURRED BY ANY PERSONS ON-SITE.
 ALL DATA INCLUDED HEREIN IS THE SOLE PROPERTY OF DUCKS UNLIMITED, INC. AND SHALL REMAIN THE SOLE PROPERTY OF DUCKS UNLIMITED, INC. NO PART OF THIS INFORMATION SHALL BE REPRODUCED OR TRANSMITTED IN ANY FORM OR BY ANY MEANS, ELECTRONIC OR MECHANICAL, INCLUDING PHOTOCOPYING, RECORDING, OR BY ANY INFORMATION STORAGE AND RETRIEVAL SYSTEM, WITHOUT THE WRITTEN PERMISSION OF DUCKS UNLIMITED, INC. ALL RIGHTS RESERVED. COPYRIGHT 2001 DUCKS UNLIMITED, INC.

Global Leader in Wetlands & Wildlife Conservation
GREAT LAKES/ATLANTIC REGIONAL OFFICE
 ANN ARBOR, MICHIGAN (734) 623-2000

DUCKS UNLIMITED

WETLAND DELINEATION Y, Z
 DTE FERMI II PLANT
 MONROE COUNTY, MICHIGAN

REVISIONS:	
CAD FILE:	Wetland Delineation 90
DESIGNED BY:	-
DRAWN BY:	GB, DA
SURVEYED BY:	GB, MW, PW
BOOK NO. # 18 PAGE 13-19	
DATE:	7/7/08
PROJECT NO.:	US-MI-188-1
GLARO-MI3-46-20	



NOTICE:
 CONSTRUCTION SITE SAFETY IS THE SOLE RESPONSIBILITY OF THE CONTRACTOR. DUCKS UNLIMITED, INC. AND ITS EMPLOYEES SHALL NOT BE HELD RESPONSIBLE FOR ANY ACCIDENTS, INJURIES, OR DEATHS THAT MAY OCCUR ON-SITE.
 ALL DATA INCLUDED HEREIN IS THE SOLE PROPERTY OF DUCKS UNLIMITED, INC. AND SHALL NOT BE REPRODUCED, COPIED, OR TRANSMITTED IN ANY FORM OR BY ANY MEANS, WITHOUT THE WRITTEN PERMISSION OF DUCKS UNLIMITED, INC. ALL RIGHTS RESERVED. COPYRIGHT 2001 DUCKS UNLIMITED, INC.

LEGEND

- OPEN WATER (FLAGGED)
- OPEN WATER (NOT FLAGGED)
- WETLAND BOUNDARY
- DATA POINT
- WETLAND FLAG
- PAUSTRINE SCRUB-SHRUB (PSS)
- PAUSTRINE EMERGENT (PEM)
- PAUSTRINE FORESTED (PFO)

GRAPHIC SCALE
 (IN FEET)
 1 inch = 50 ft.

REVISIONS:	
WETLAND DELINEATION BB NORTH, FF DTE FERMI II PLANT MONROE COUNTY, MICHIGAN	
CAD FILE:	Wetland Delineation 50
DESIGNED BY:	
DRAWN BY:	GB, DA
SURVEYED BY:	GB, MW, PW
BOOK NO. # 16 PAGE 13-19	
DATE:	7/7/08
PROJECT NO.:	US-MI-188-1
GLAO-MIS-48-22	

Global Leader in Wetlands & Wildlife Conservation
GREAT LAKES/ATLANTIC REGIONAL OFFICE
 ANN ARBOR, MICHIGAN (734) 623-2000

DUCKS UNLIMITED

