










**LEGEND**

-  OPEN WATER (FLAGGED)
-  OPEN WATER (NOT FLAGGED)
-  WETLAND BOUNDARY
-  DATA POINT
-  WETLAND FLAG
-  PALUSTRINE SCRUB-SHRUB (PSS)
-  PALUSTRINE EMERGENT (PEM)
-  PALUSTRINE FORESTED (PFO)

**NOTICE:**  
 CONSTRUCTION SITE SAFETY IS THE SOLE RESPONSIBILITY OF THE CONTRACTOR. DUCKS UNLIMITED, INC. AND ITS EMPLOYEES SHALL NOT BE HELD RESPONSIBLE FOR ANY INJURIES OR DEATHS THAT MAY OCCUR AT THE WORK SITE. ALL DATA AND INFORMATION IS THE SOLE PROPERTY OF DUCKS UNLIMITED, INC. AND SHALL BE KEPT CONFIDENTIAL. NO PART OF THIS INFORMATION SHALL BE REPRODUCED OR TRANSMITTED IN ANY FORM OR BY ANY MEANS, ELECTRONIC OR MECHANICAL, INCLUDING PHOTOCOPYING, RECORDING, OR BY ANY INFORMATION STORAGE AND RETRIEVAL SYSTEM, WITHOUT THE WRITTEN PERMISSION OF DUCKS UNLIMITED, INC. ALL RIGHTS RESERVED. COPYRIGHT 2001 DUCKS UNLIMITED, INC.

Global Leader in Wetlands & Wildlife Conservation  
**GREAT LAKES/ATLANTIC REGIONAL OFFICE**  
 ANN ARBOR, MICHIGAN (734) 623-2000

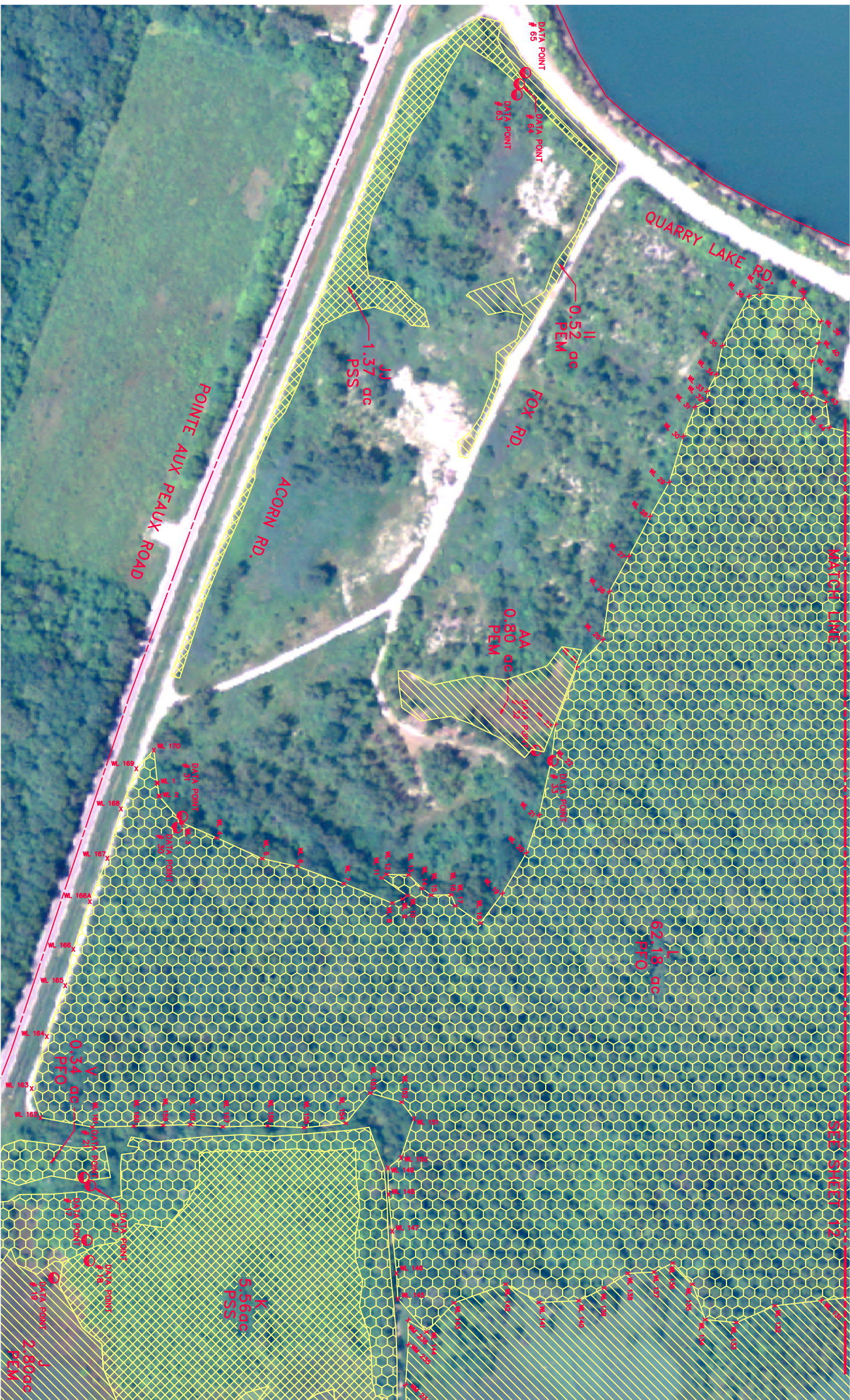


**DUCKS UNLIMITED**

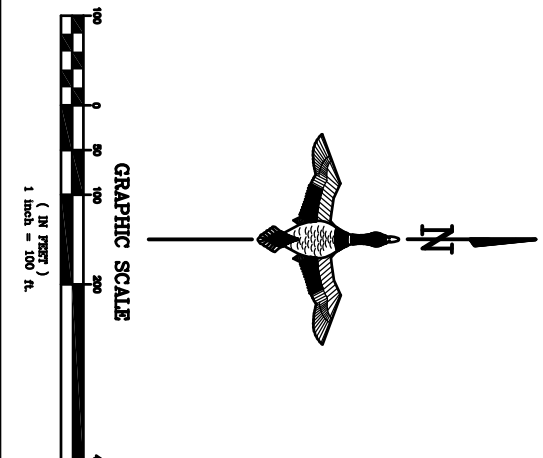
**WETLAND DELINEATION L. NORTH  
 DTE FERMI II PLANT  
 MONROE COUNTY, MICHIGAN**

REVISIONS:					
CAD FILE:	Wetland Delineation 100	DESIGNED BY: -	DRAWN BY: OS, DA	SELECTED BY: OS, MW/PW	BOOK NO. # 18 PAGE 13-19
DATE:	7/7/08	PROJECT NO.:	US-MI-108-1	PROJECT NO.:	GLARO-MI3-46-12
4/19/2011 PER CLIENT REQUEST FOR					





**NOTICE:**  
 CONSTRUCTION SITE SAFETY IS THE SOLE RESPONSIBILITY OF THE CONTRACTOR. DUCKS UNLIMITED, INC. DOES NOT ASSUME ANY LIABILITY FOR THE SAFETY OF PERSONS OR PROPERTY. PERSONS ENGAGED IN THE WORK, HEAVY STRUCTURES OR OF OTHER PERSONS ON-SITE.  
 ALL DATA INCLUDING HEREIN IS THE SOLE PROPERTY OF DUCKS UNLIMITED, INC. AND SHALL REMAIN THE SOLE PROPERTY OF DUCKS UNLIMITED, INC. ANY REUSE OR REPRODUCTION OF THIS INFORMATION FOR ANY OTHER PROJECT WITHOUT THE WRITTEN CONSENT OF DUCKS UNLIMITED, INC. IS STRICTLY PROHIBITED. COPYRIGHT 2001 DUCKS UNLIMITED, INC.



**LEGEND**

	OPEN WATER (FLAGGED)
	OPEN WATER (NOT FLAGGED)
	WETLAND BOUNDARY
	DATA POINT
	WETLAND FLAG
	PALUSTRINE SCRUB-SHRUB (PSS)
	PALUSTRINE EMERGENT (PEM)
	PALUSTRINE FORESTED (PFO)

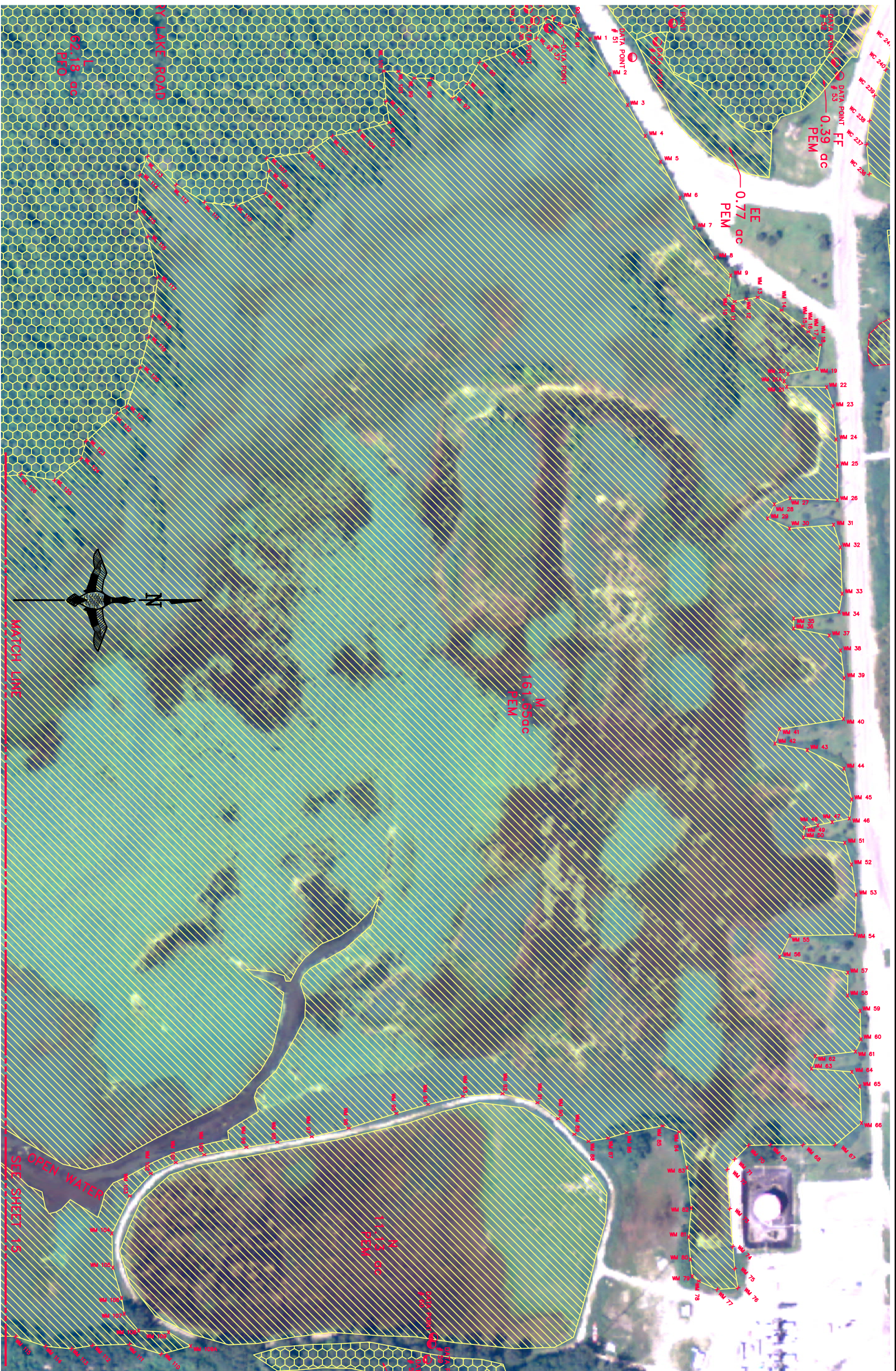
REVISIONS:	
DATE:	7/7/08
PROJECT NO.:	US-MI-188-1
BOOK NO. # 16 PAGE 13-19	
SUBMITTED BY: GRM/WFW	
DRAWN BY: GR, DA	
DESIGNED BY: -	
Wetland Delineation 100	
CAD FILE:	
GLAND-MIS-48-13	

WETLAND DELINEATION L SOUTH  
 DTE FERMI II PLANT  
 MONROE COUNTY, MICHIGAN

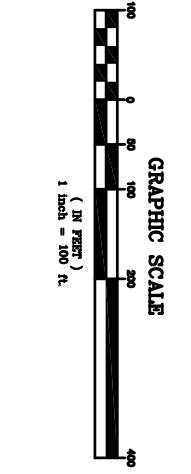
Global Leader in Wetlands & Wildlife Conservation  
**GREAT LAKES/ATLANTIC REGIONAL OFFICE**  
 ANN ARBOR, MICHIGAN (734) 623-2000

**DUCKS UNLIMITED**





**NOTICE:**  
 CONSTRUCTION SITE SAFETY IS THE SOLE RESPONSIBILITY OF THE CONTRACTOR. DUCKS UNLIMITED, INC. IS NOT RESPONSIBLE FOR THE SAFETY OF ANY PERSONS OR PROPERTY IN THE WORK AREA. PERSONS ENGAGED IN THE WORK, NEARBY STRUCTURES OR OF OTHER PERSONS ON-SITE.  
 ALL DATA INCLUDED HEREIN IS THE SOLE PROPERTY OF DUCKS UNLIMITED, INC. AND SHALL REMAIN THE PROPERTY OF DUCKS UNLIMITED, INC. AND SHALL NOT BE REPRODUCED, COPIED, OR TRANSMITTED IN ANY FORM OR BY ANY MEANS, ELECTRONIC OR MECHANICAL, INCLUDING PHOTOCOPYING, RECORDING, OR BY ANY INFORMATION STORAGE AND RETRIEVAL SYSTEM, WITHOUT THE WRITTEN PERMISSION OF DUCKS UNLIMITED, INC. ALL RIGHTS RESERVED. COPYRIGHT 2001 DUCKS UNLIMITED, INC.



- LEGEND**
- OPEN WATER (FLAGGED)
  - OPEN WATER (NOT FLAGGED)
  - WETLAND BOUNDARY
  - DATA POINT
  - WETLAND FLAG
  - PALUSTRINE SCRUB-SHRUB (PSS)
  - PALUSTRINE EMERGENT (PEM)
  - PALUSTRINE FORESTED (PFO)

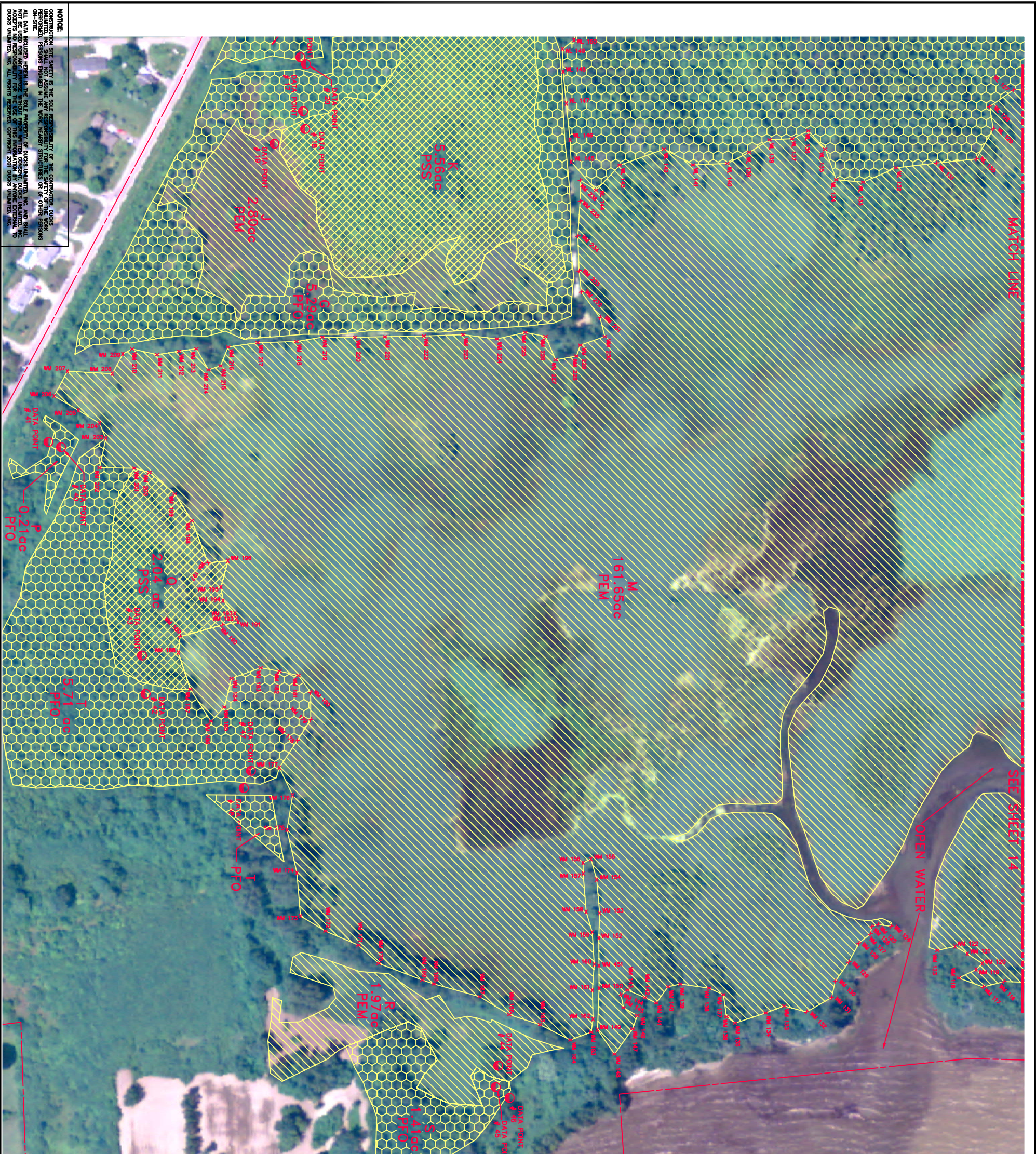
4/19/2011 PER CLIENT REQUEST  
 WETLAND DELINEATION 100  
 DESIGNED BY: --  
 DRAWN BY: GB, DA  
 SUBMITTED BY: GB, MW, W  
 BOOK NO. # 16 PAGE 13-19  
 DATE: 7/7/08  
 PROJECT NO.: US-MI-188-1  
 GLAND-MIS-48-14

REVISIONS:  
 CAD FILE:  
 Wetland Delineation 100  
 WETLAND DELINEATION M NORTH  
 DTE FERMI II PLANT  
 MONROE COUNTY, MICHIGAN

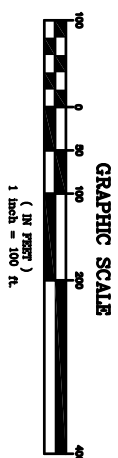
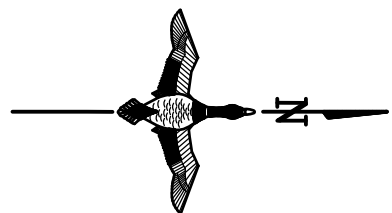
Global Leader in Wetlands & Wildlife Conservation  
**GREAT LAKES/ATLANTIC REGIONAL OFFICE**  
 ANN ARBOR, MICHIGAN (734) 623-2000

**DUCKS UNLIMITED**





**NOTICE:**  
 CONSTRUCTION SITE SAFETY IS THE SOLE RESPONSIBILITY OF THE CONTRACTOR. DUCKS UNLIMITED, INC. AND ITS EMPLOYEES SHALL NOT BE HELD RESPONSIBLE FOR ANY ACCIDENTS OR INJURIES THAT MAY OCCUR ON-SITE. ALL DATA INCLUDED HEREIN IS THE SOLE PROPERTY OF DUCKS UNLIMITED, INC. AND SHALL NOT BE REPRODUCED, COPIED, OR TRANSMITTED IN ANY FORM OR BY ANY MEANS, WITHOUT THE WRITTEN CONSENT OF DUCKS UNLIMITED, INC. ALL RIGHTS RESERVED. COPYRIGHT 2001 DUCKS UNLIMITED, INC.



**LEGEND**

- OPEN WATER (FLAGGED)
- OPEN WATER (NOT FLAGGED)
- WETLAND BOUNDARY
- DATA POINT
- WETLAND FLAG
- PALUSTRINE SCRUB-SHRUB (PSS)
- PALUSTRINE EMERGENT (PEM)
- PALUSTRINE FORESTED (PFO)

Global Leader in Wetlands & Wildlife Conservation  
**GREAT LAKES/ATLANTIC REGIONAL OFFICE**  
 ANN ARBOR, MICHIGAN (734) 623-2000

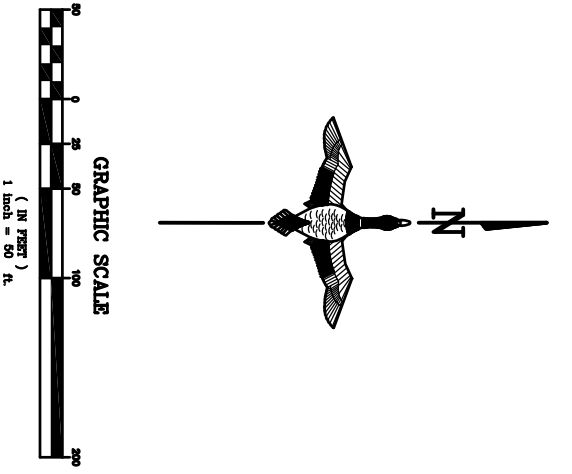
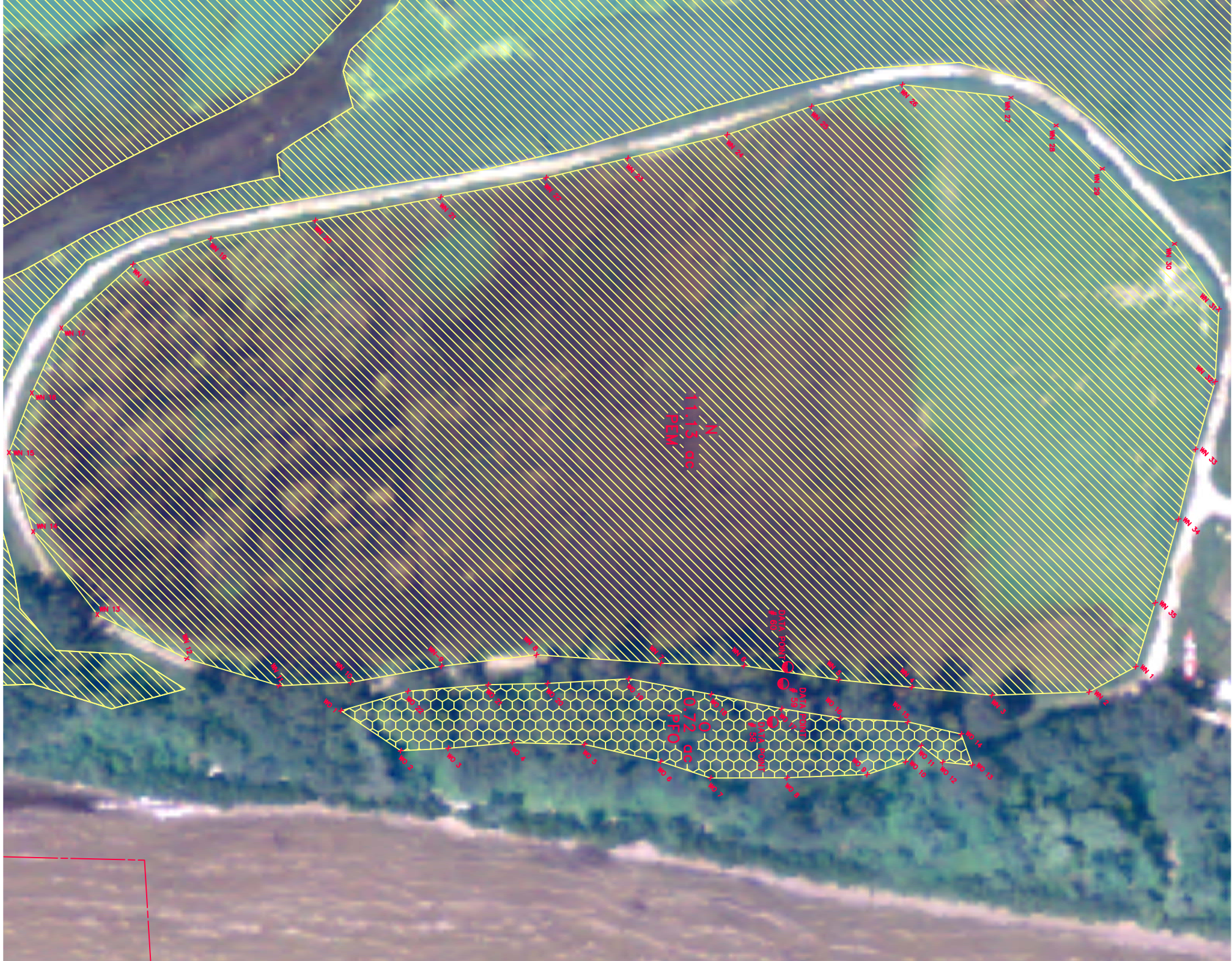
**DUCKS UNLIMITED**

**WETLAND DELINEATION M SOUTH  
 DTE FERMI II PLANT  
 MONROE COUNTY, MICHIGAN**









REVISIONS:					
CAD FILE:	Wetland Delineation 100	DESIGNED BY: -	DRAWN BY: OS, DA	STARTED BY: OS/WJW	BOOK NO. # 18 PAGE 13-19
PROJECT NO.:	US-MI-108-1	DATE:	7/7/08	PROJECT NO.:	GLARO-MIS-46-15
4/15/2011 PER CLIENT REQUEST FOR					



**NOTICE:**  
 CONSTRUCTION SITE SAFETY IS THE SOLE RESPONSIBILITY OF THE CONTRACTOR. DUCKS UNLIMITED, INC. SHALL NOT BE RESPONSIBLE FOR ANY ACCIDENTS OR INJURIES THAT MAY OCCUR ON-SITE.  
 ALL DATA INCLUDING HEREIN IS THE SOLE PROPERTY OF DUCKS UNLIMITED, INC. AND SHALL NOT BE REPRODUCED OR TRANSMITTED IN ANY FORM OR BY ANY MEANS, ELECTRONIC OR MECHANICAL, INCLUDING PHOTOCOPYING, RECORDING, OR BY ANY INFORMATION STORAGE AND RETRIEVAL SYSTEM, WITHOUT THE WRITTEN PERMISSION OF DUCKS UNLIMITED, INC. ALL RIGHTS RESERVED. COPYRIGHT 2001 DUCKS UNLIMITED, INC.



**LEGEND**

-  OPEN WATER (FLAGGED)
-  OPEN WATER (NOT FLAGGED)
-  WETLAND BOUNDARY
-  DATA POINT
-  WETLAND FLAG
-  PALUSTRINE SCRUB-SHRUB (PSS)
-  PALUSTRINE EMERGENT (PEM)
-  PALUSTRINE FORESTED (PFO)

WETLAND DELINEATION N, O  
 DTE FERMI II PLANT  
 MONROE COUNTY, MICHIGAN



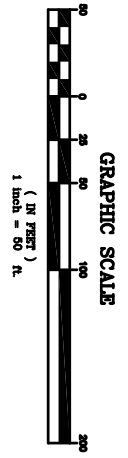
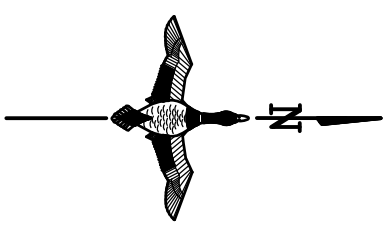
Global Leader in Wetlands & Wildlife Conservation  
**GREAT LAKES/ATLANTIC REGIONAL OFFICE**  
 ANN ARBOR, MICHIGAN (734) 623-2000

REVISIONS:	
CAD FILE:	Wetland Delineation 50
DESIGNED BY:	
DRAWN BY:	OB, DA
SURVEYED BY:	OB, MW, W
BOOK NO. #	16 PAGE 13-19
DATE:	7/7/08
PROJECT NO.:	US-MI-188-1
	GLARO-MIS-48-16





**NOTICE:**  
 CONSTRUCTION SITE SAFETY IS THE SOLE RESPONSIBILITY OF THE CONTRACTOR. DUCKS UNLIMITED, INC. AND ITS EMPLOYEES SHALL NOT BE RESPONSIBLE FOR ANY INJURIES OR DEATHS THAT MAY OCCUR ON-SITE. ALL DATA INCLUDED HEREIN IS THE SOLE PROPERTY OF DUCKS UNLIMITED, INC. AND SHALL NOT BE REPRODUCED, COPIED, OR TRANSMITTED IN ANY MANNER WITHOUT THE WRITTEN CONSENT OF DUCKS UNLIMITED, INC. ALL RIGHTS RESERVED. COPYRIGHT 2001 DUCKS UNLIMITED, INC.



**LEGEND**

	OPEN WATER (FLAGGED)
	OPEN WATER (NOT FLAGGED)
	WETLAND BOUNDARY
	DATA POINT
	WETLAND FLAG
	PALUSTRINE SCRUB-SHRUB (PSS)
	PALUSTRINE EMERGENT (PEM)
	PALUSTRINE FORESTED (PFO)

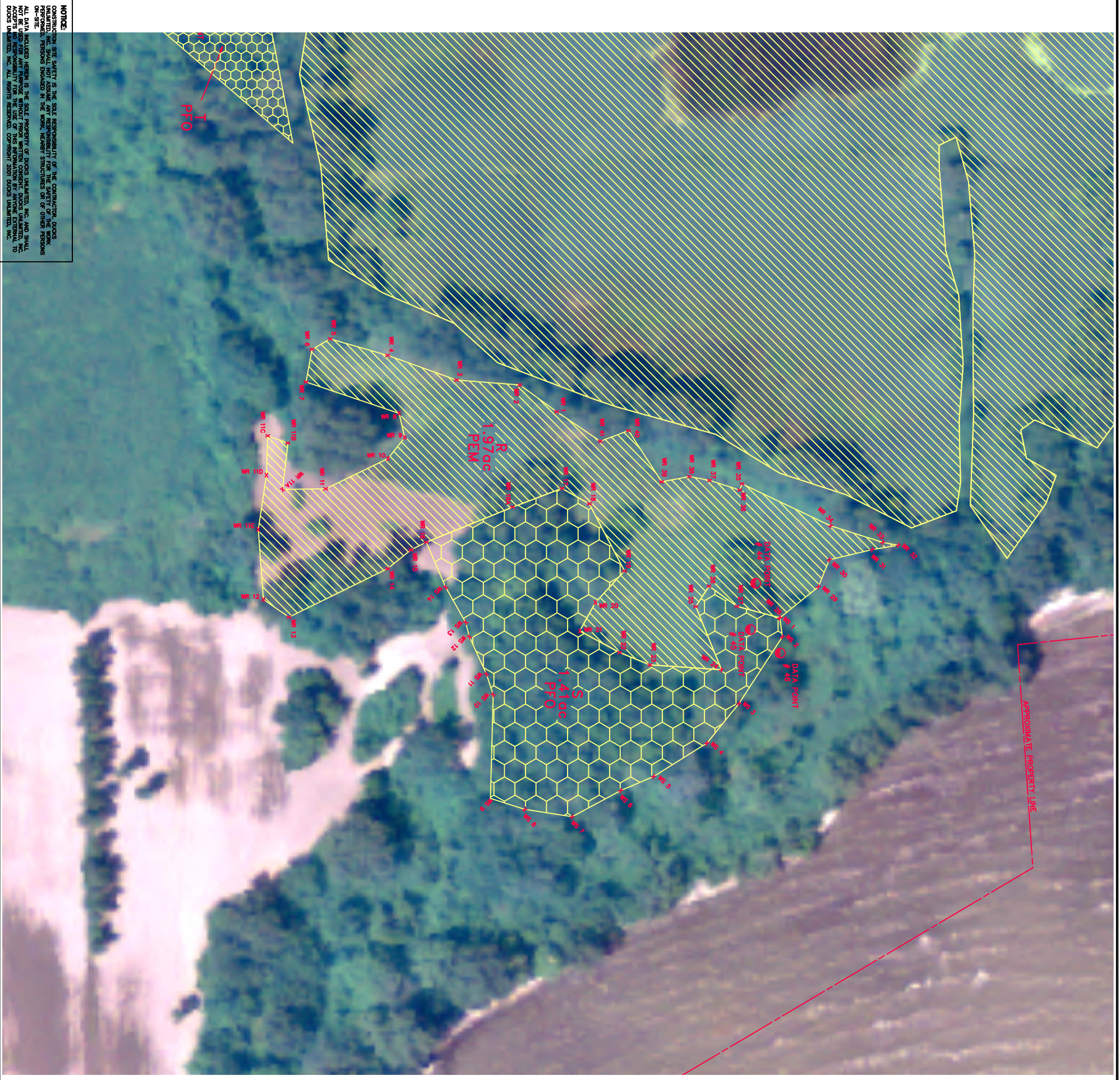
WETLAND DELINEATION P, Q, T  
 DTE FERMII PLANT  
 MONROE COUNTY, MICHIGAN

Global Leader in Wetlands & Wildlife Conservation  
**GREAT LAKES/ATLANTIC REGIONAL OFFICE**  
 ANN ARBOR, MICHIGAN (734) 623-2000

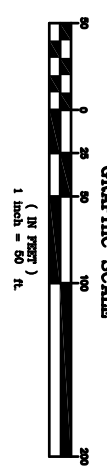
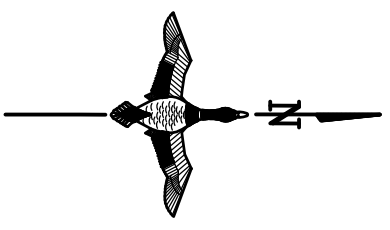
**DUCKS UNLIMITED**

1/14/2001 08:51:00 CAD FILE: Wetland Delineation 90  
 DESIGNED BY: —  
 DRAWN BY: OS, DA  
 SURVEYED BY: OS, MW, PW  
 BOOK NO. # 18 PAGE 13-19  
 DATE: 7/7/08  
 PROJECT NO.: US-MI-108-1  
 GLARO-MI3-46-17





**NOTICE**  
 CONSTRUCTION SITE SAFETY IS THE SOLE RESPONSIBILITY OF THE CONTRACTOR. DUCKS UNLIMITED, INC. AND ITS EMPLOYEES WILL NOT BE RESPONSIBLE FOR THE SAFETY OF THE CONTRACTOR OR OTHER PERSONS WORKING ON-SITE.  
 ALL DATA INCLUDED HEREIN IS THE SOLE PROPERTY OF DUCKS UNLIMITED, INC. AND SHALL REMAIN THE PROPERTY OF DUCKS UNLIMITED, INC. FOR THE LIFE OF THE PROJECT. DUCKS UNLIMITED, INC. ACCEPTS NO RESPONSIBILITY FOR THE USE OF THIS INFORMATION BY ANYONE OTHER THAN THE PERSONS FOR WHOM IT WAS PREPARED. DUCKS UNLIMITED, INC. AND ITS EMPLOYEES SHALL NOT BE HELD LIABLE FOR ANY DAMAGE TO PERSONS OR PROPERTY CAUSED BY THE USE OF THIS INFORMATION. DUCKS UNLIMITED, INC. ALL RIGHTS RESERVED. COPYRIGHT 2001 DUCKS UNLIMITED, INC.



LEGEND	
	OPEN WATER (FLAGGED)
	OPEN WATER (NOT FLAGGED)
	WETLAND BOUNDARY
	DATA POINT
	WETLAND FLAG
	PALUSTRINE SCRUB-SHRUB (PSS)
	PALUSTRINE EMERGENT (PEM)
	PALUSTRINE FORESTED (PFO)

Global Leader in Wetlands & Wildlife Conservation  
**GREAT LAKES/ATLANTIC REGIONAL OFFICE**  
 ANN ARBOR, MICHIGAN (734) 623-2000

**DUCKS UNLIMITED**

WETLAND DELINEATION, R, S  
 DTE FERMI II PLANT  
 MONROE COUNTY, MICHIGAN

REVISIONS:	
DATE:	
PROJECT NO.:	
BOOK NO. # 18 PAGE 13-19	
DESIGNED BY: -	
DRAWN BY: OS, DA	
SURVEYED BY: OS, MW, PW	
DATE:	7/7/08
PROJECT NO.:	US-MI-188-1
BOOK NO. # 18 PAGE 13-18	
4/15/2011 PER CLIENT REQUEST FOR	
Wetland Delineation 50	
CAD FILE:	