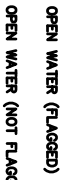
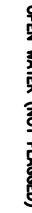

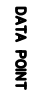






### LEGEND

-  OPEN WATER (FLAGGED)
-  OPEN WATER (NOT FLAGGED)
-  WETLAND BOUNDARY
-  DATA POINT
-  WETLAND FLAG
-  PALUSTRINE SCRUB-SHRUB (PSS)
-  PALUSTRINE EMERGENT (PEM)
-  PALUSTRINE FORESTED (PFO)

**NOTICE:**  
CONSTRUCTION SITE SAFETY IS THE SOLE RESPONSIBILITY OF THE CONTRACTOR. DUCKS UNLIMITED, INC. SHALL NOT BE RESPONSIBLE FOR ANY ACCIDENTS OR INJURIES TO PERSONS OR PROPERTY CAUSED BY OR ARISING OUT OF OR IN CONNECTION WITH THE WORK, NEARBY STRUCTURES OR OTHER PERSONS ON-SITE.  
ALL DATA INCLUDED HEREIN IS THE SOLE PROPERTY OF DUCKS UNLIMITED, INC. AND SHALL BE KEPT CONFIDENTIAL AND NOT BE DISCLOSED OR REPRODUCED FOR THE USE OF ANY OTHER ENTITY, WITHOUT THE WRITTEN CONSENT OF DUCKS UNLIMITED, INC. ALL RIGHTS RESERVED. COPYRIGHT 2001 DUCKS UNLIMITED, INC.

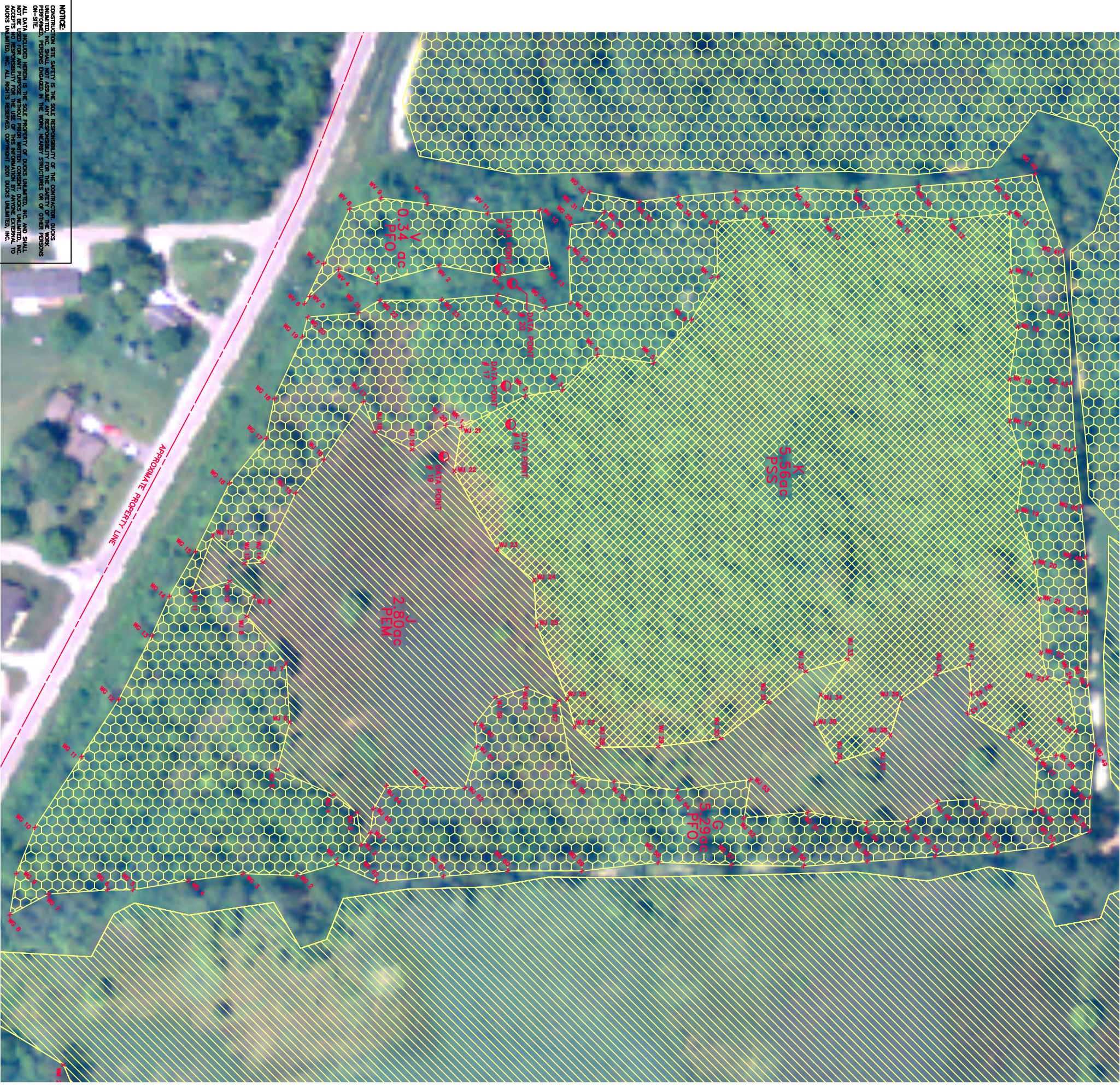
Global Leader in Wetlands & Wildlife Conservation  
**GREAT LAKES/ATLANTIC REGIONAL OFFICE**  
ANN ARBOR, MICHIGAN (734) 623-2000



**DUCKS UNLIMITED**

**WETLAND DELINEATION F SOUTH**  
DTE FERMI II PLANT  
MONROE COUNTY, MICHIGAN

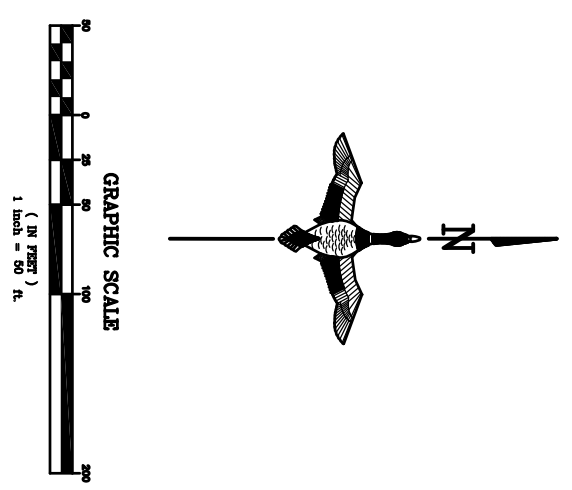
REVISIONS:	
CAD FILE:	Wetland Delineation 50
DESIGNED BY:	
DRAWN BY:	DB, DA
SURVEYED BY:	DB, MW, PW
BOOK NO. #	16 PAGE 13-19
DATE:	7/7/08
PROJECT NO.:	US-MI-188-1
	GLAR0-M13-46-8



**NOTICE:**  
 CONSTRUCTION SITE SAFETY IS THE SOLE RESPONSIBILITY OF THE CONTRACTOR. DUCKS UNLIMITED, INC. SHALL NOT BE RESPONSIBLE FOR THE SAFETY OF ANY PERSONS EMPLOYED BY THE CONTRACTOR. ALL DATA INCLUDED HEREIN IS THE SOLE PROPERTY OF DUCKS UNLIMITED, INC. AND SHALL NOT BE REPRODUCED OR TRANSMITTED IN ANY FORM OR BY ANY MEANS, ELECTRONIC OR MECHANICAL, INCLUDING PHOTOCOPYING, RECORDING, OR BY ANY INFORMATION STORAGE AND RETRIEVAL SYSTEM, WITHOUT THE WRITTEN PERMISSION OF DUCKS UNLIMITED, INC. ALL RIGHTS RESERVED. COPYRIGHT 2001 DUCKS UNLIMITED, INC.

**LEGEND**

	OPEN WATER (FLAGGED)
	OPEN WATER (NOT FLAGGED)
	WETLAND BOUNDARY
	DATA POINT
	WETLAND FLAG
	PAULSTRINE FORESTED (PFO)
	PAULSTRINE EMERGENT (PEM)
	PAULSTRINE SCRUB-SHRUB (PSS)

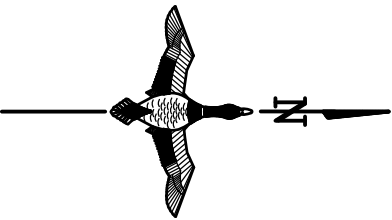
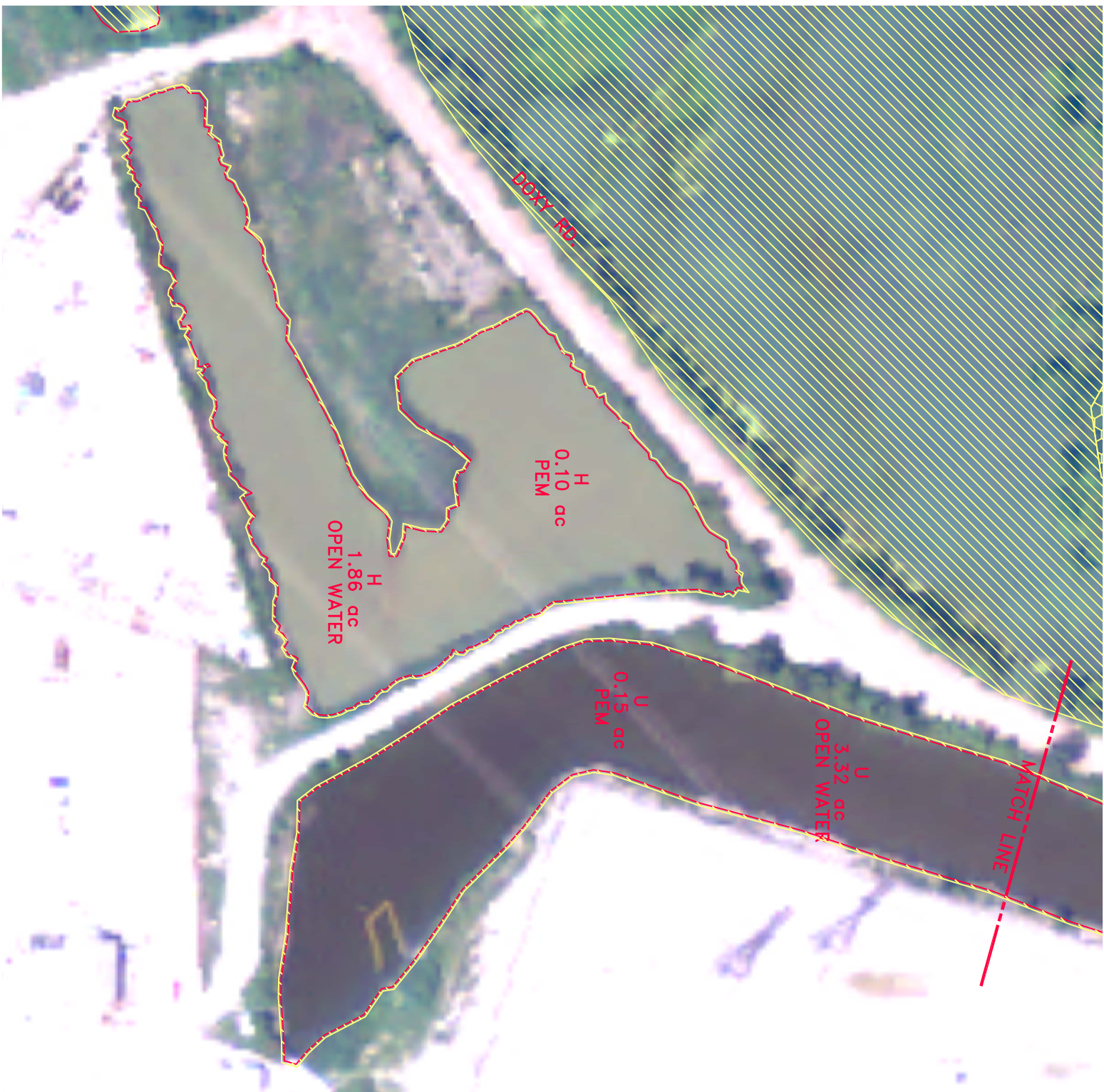


REGIONS:	
4/19/2011 PER CLIENT REQUEST FOR	
CAD FILE:	Wetland Delineation 50
DESIGNED BY:	
DRAWN BY:	GB, DA
SUBMITTED BY:	GB, MW, PW
BOOK NO. #	16 PAGE 13-19
DATE:	7/7/08
PROJECT NO.:	US-MI-188-1
GLARO-MI3-46-9	

**WETLAND DELINEATION G, J, K, V  
 DTE FERMI II PLANT  
 MONROE COUNTY, MICHIGAN**

Global Leader in Wetlands & Wildlife Conservation  
**GREAT LAKES/ATLANTIC REGIONAL OFFICE**  
 ANN ARBOR, MICHIGAN (734) 623-2000

**DUCKS UNLIMITED**



**LEGEND**

OPEN WATER (FLAGGED)

OPEN WATER (NOT FLAGGED)

WETLAND BOUNDARY

DATA POINT

WETLAND FLAG

PAUSTRINE SCRUB-SHRUB (PSS)

PAUSTRINE EMERGENT (PEM)

PAUSTRINE FORESTED (PFO)



CAD FILE:

Wetland Delineation 50

DESIGNED BY: --

DRAWN BY: GB, DA

SUBMITTED BY: GB, MW, PW

BOOK NO. # 16 PAGE 13-19

DATE: 7/7/08

PROJECT NO.: US-MI-188-1

GLARO-MIS-48-10

REVISIONS:

WETLAND DELINEATION H, U  
DTE FERMI II PLANT  
MONROE COUNTY, MICHIGAN

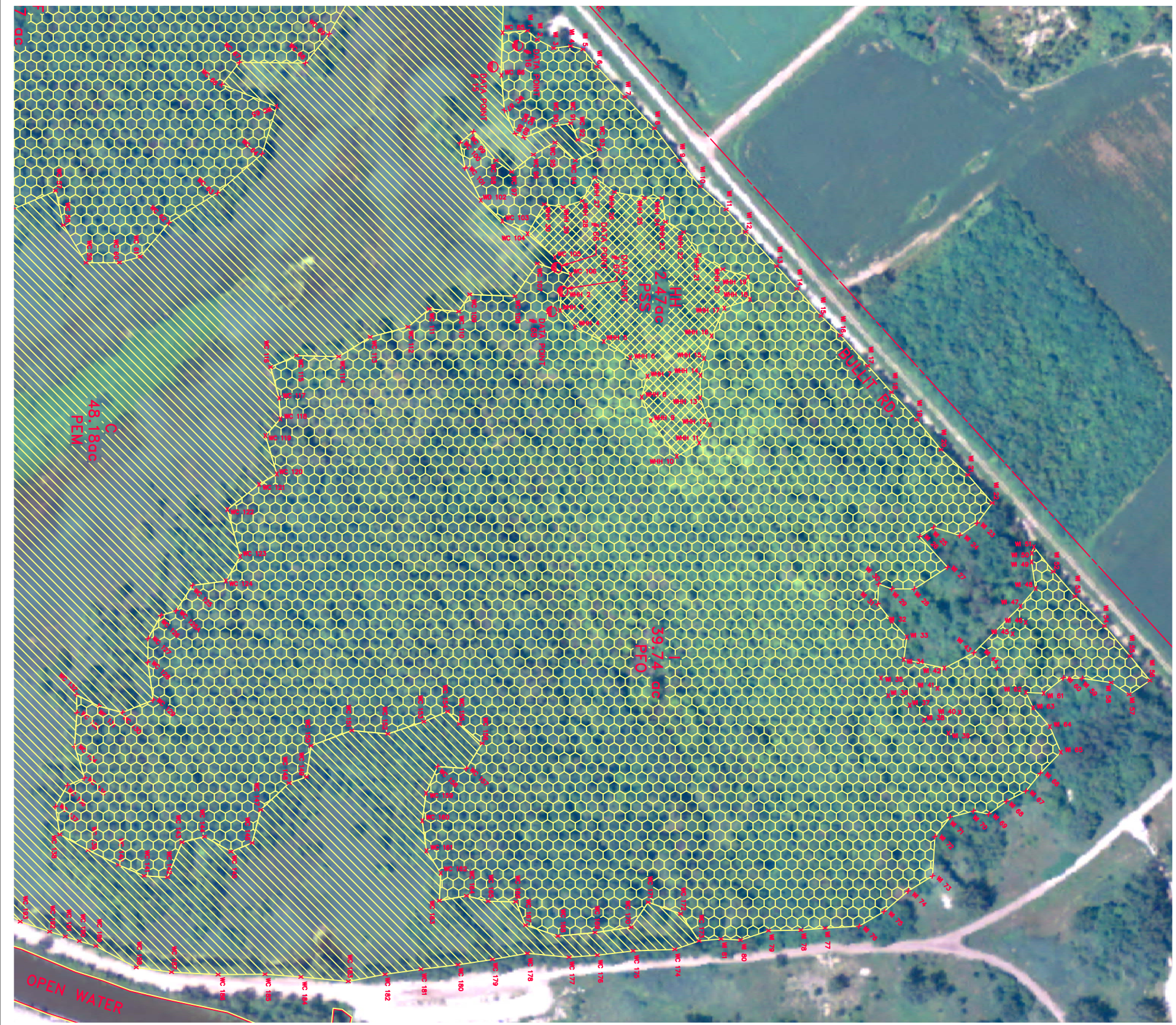


Global Leader in Wetlands & Wildlife Conservation  
**GREAT LAKES/ATLANTIC REGIONAL OFFICE**  
ANN ARBOR, MICHIGAN (734) 623-2000

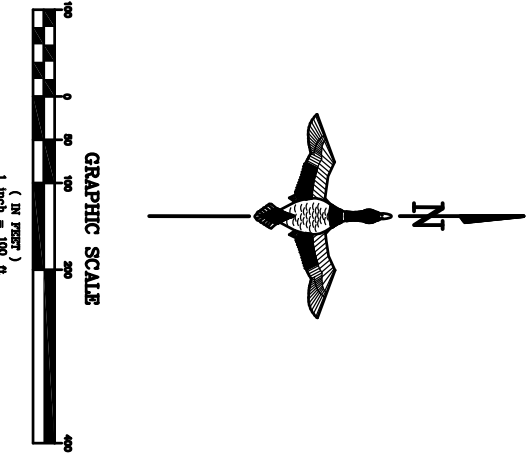
**DUCKS UNLIMITED**

**NOTICE:**  
CONSTRUCTION SITE SAFETY IS THE SOLE RESPONSIBILITY OF THE CONTRACTOR. DUCKS UNLIMITED, INC. DOES NOT PROVIDE SAFETY TRAINING OR EQUIPMENT. PERSONS ENAGED IN THE WORK, HEAVY STRUCTURES OR OF OTHER PERSONS ON-SITE.  
ALL DATA INCLUDED HEREIN IS THE SOLE PROPERTY OF DUCKS UNLIMITED, INC. AND SHALL NOT BE REPRODUCED, COPIED, OR TRANSMITTED IN ANY FORM OR BY ANY MEANS, ELECTRONIC OR MECHANICAL, INCLUDING PHOTOCOPYING, RECORDING, OR BY ANY INFORMATION STORAGE AND RETRIEVAL SYSTEM, WITHOUT THE WRITTEN PERMISSION OF DUCKS UNLIMITED, INC. ALL RIGHTS RESERVED. COPYRIGHT 2007 DUCKS UNLIMITED, INC.

**NOTICE:**  
 CONSTRUCTION SITE SAFETY IS THE SOLE RESPONSIBILITY OF THE CONTRACTOR. DUCKS UNLIMITED, INC. AND ITS EMPLOYEES SHALL NOT BE HELD RESPONSIBLE FOR ANY ACCIDENTS, INJURIES, OR DEATHS THAT MAY OCCUR ON-SITE.  
 ALL DATA INCLUDED HEREIN IS THE SOLE PROPERTY OF DUCKS UNLIMITED, INC. AND SHALL BE KEPT CONFIDENTIAL. NO PART OF THIS INFORMATION IS TO BE REPRODUCED, COPIED, OR TRANSMITTED IN ANY FORM OR BY ANY MEANS, ELECTRONIC OR MECHANICAL, INCLUDING PHOTOCOPYING, RECORDING, OR BY ANY INFORMATION STORAGE AND RETRIEVAL SYSTEM, WITHOUT THE WRITTEN PERMISSION OF DUCKS UNLIMITED, INC. ALL RIGHTS RESERVED. COPYRIGHT 2001 DUCKS UNLIMITED, INC.



- LEGEND**
- OPEN WATER (FLAGGED)
  - OPEN WATER (NOT FLAGGED)
  - WETLAND BOUNDARY
  - DATA POINT
  - WETLAND FLAG
  - PALUSTRINE FORESTED (PFO)
  - PALUSTRINE SCRUB-SHRUB (PSS)
  - PALUSTRINE EMERGENT (PEM)



WETLAND DELINEATION I  
 DTE FERMII PLANT  
 MONROE COUNTY, MICHIGAN

Global Leader in Wetlands & Wildlife Conservation  
**GREAT LAKES/ATLANTIC REGIONAL OFFICE**  
 ANN ARBOR, MICHIGAN (734) 623-2000

**DUCKS UNLIMITED**

REVISIONS:	
CAD FILE:	Wetland Delineation 100
DESIGNED BY:	—
DRAWN BY:	GB, DA
SURVEYED BY:	GB, MW, PW
BOOK NO. #	18 PAGE 13-19
DATE:	7/7/08
PROJECT NO.:	US-MI-188-1
	GLARO-MI3-46-11