

APPENDIX G

Traffic Management

APPENDIX G: TRAFFIC MANAGEMENT

This appendix presents the traffic control and access control tactics implemented in developing evacuation time estimates for the Comanche Peak Nuclear Power Plant. Suggested Traffic Control Points (TCP) and Access Control Points (ACP) are listed, recognizing that existing plans are in place and have been tested. **This Appendix provides information that may be considered in updating the existing plans, but does not supersede them.** TCP and ACP should be manned according to priority, manpower and available equipment resources – not all TCP and ACP need to be activated.

Pages G-2 through G-43 detail the TCP, which are typically within the EPZ or just outside the EPZ. TCP are established to facilitate the flow of evacuating traffic from the Region being evacuated. Figure G-1 presents an overview map of the TCP, while Figures G-2 through G-4 depict the TCP in the more populated areas of the EPZ. Table G-1 summarizes the TCP and the manpower and equipment needed to implement traffic control. The table is sorted by county and by priority.

Pages G-44 through G-61 detail the ACP, which are typically on the periphery of the EPZ; these points are established to divert vehicles from entering the EPZ. Doing so provides all of the available roadway capacity within the EPZ to the evacuees. Table G-2 summarizes the ACP and the manpower and equipment needed to establish access control, while Figure G-5 provides a detailed map of the location of each ACP.

Manpower and equipment shortages are likely to arise; as such, prioritization of TCP and ACP was established to make the most efficient use of manpower and equipment in the event of an emergency. The use of ITS technologies, as outlined in Section 9, can also aid in overcoming resource constraints.

With reference to the discussion of Section 2.3, these TCP serve many useful functions, but are not considered in specifying the inputs to the PC-DYNEV model used to calculate ETE. Consequently, the results presented in Section 7 and in Appendix J do not credit the presence of these TCP.

All transit trips and other responders entering the EPZ to support the evacuation are assumed to be unhindered by personnel manning ACPs.

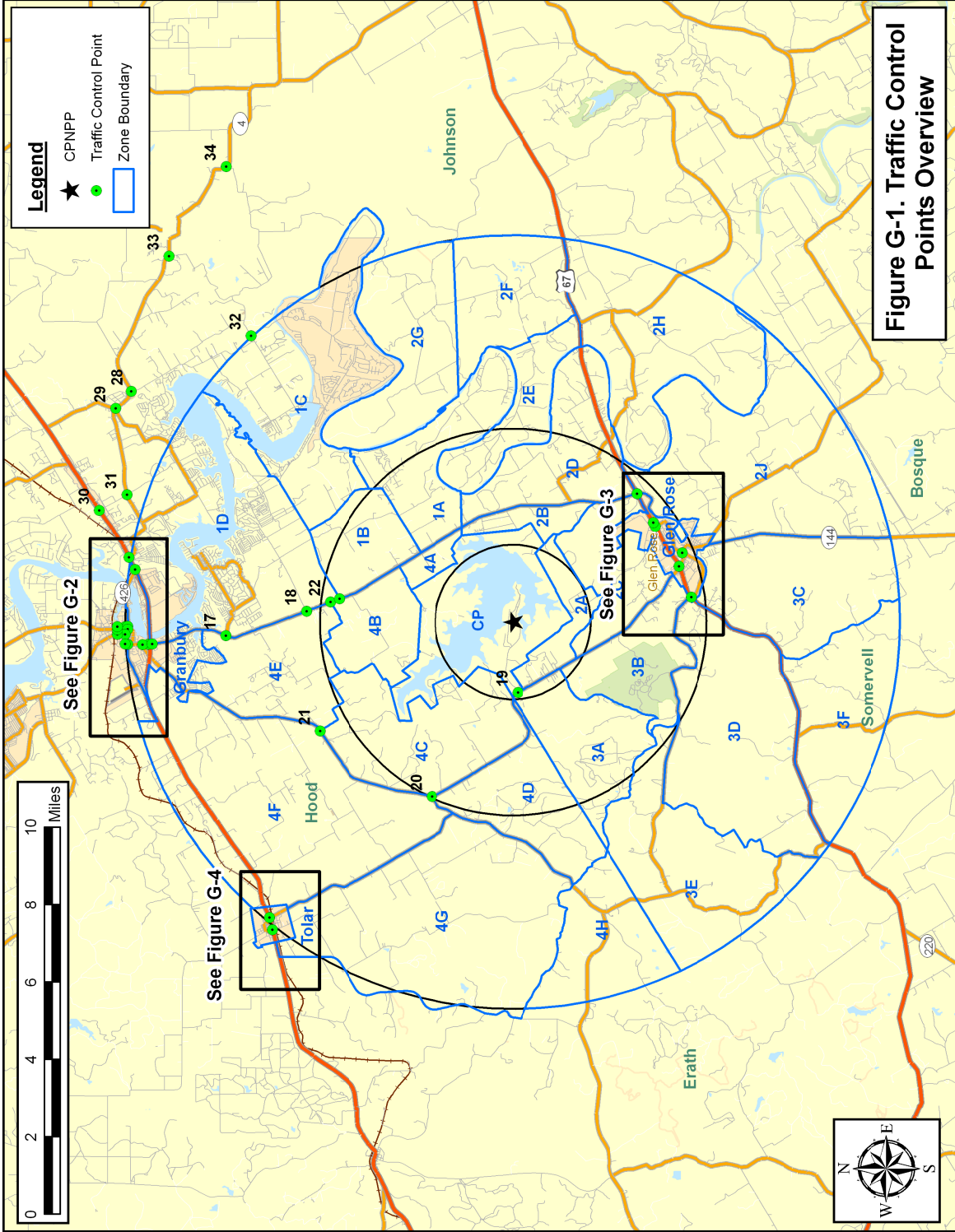


Figure G-1. Traffic Control Points Overview

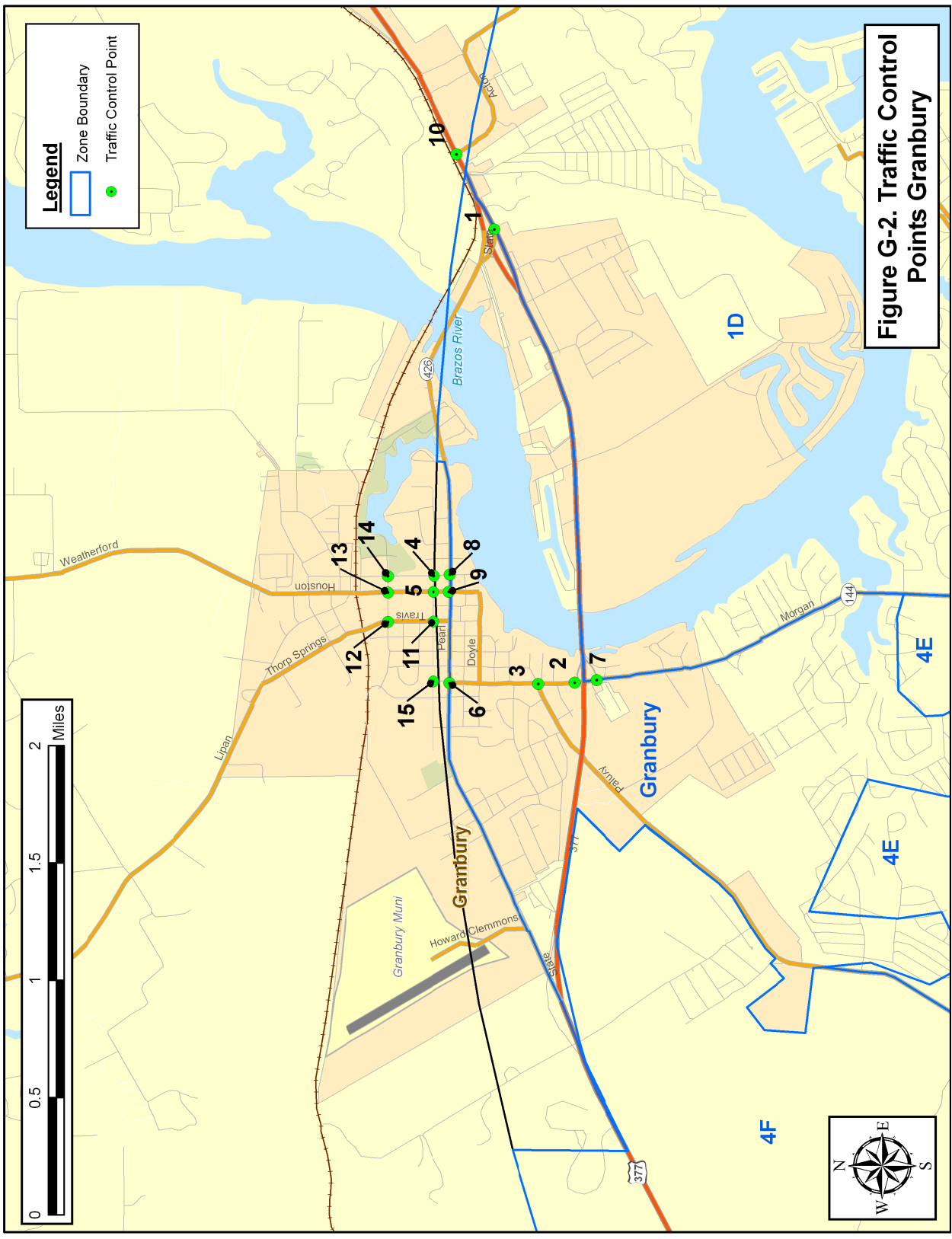


Figure G-2. Traffic Control Points Granbury

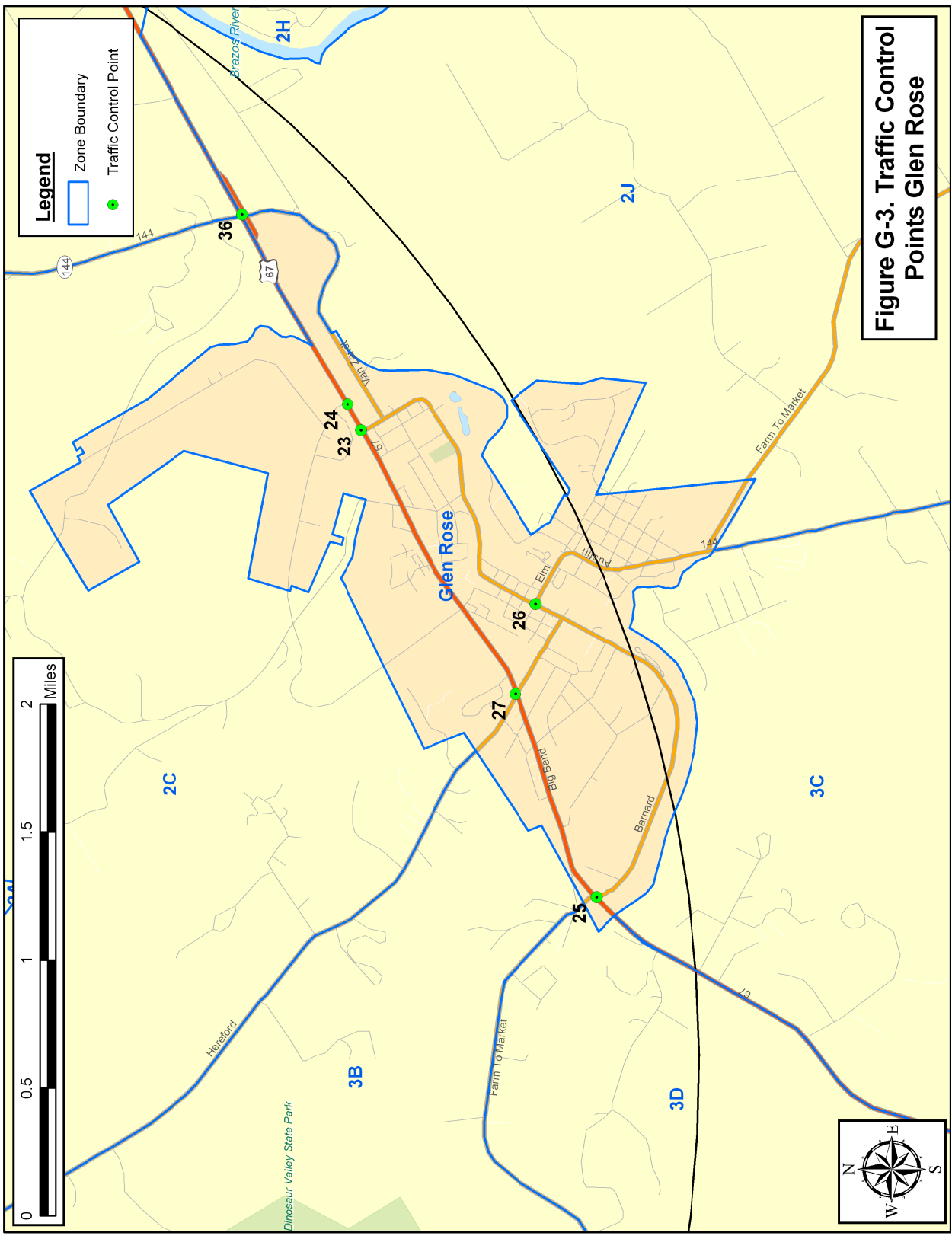


Figure G-3. Traffic Control Points Glen Rose

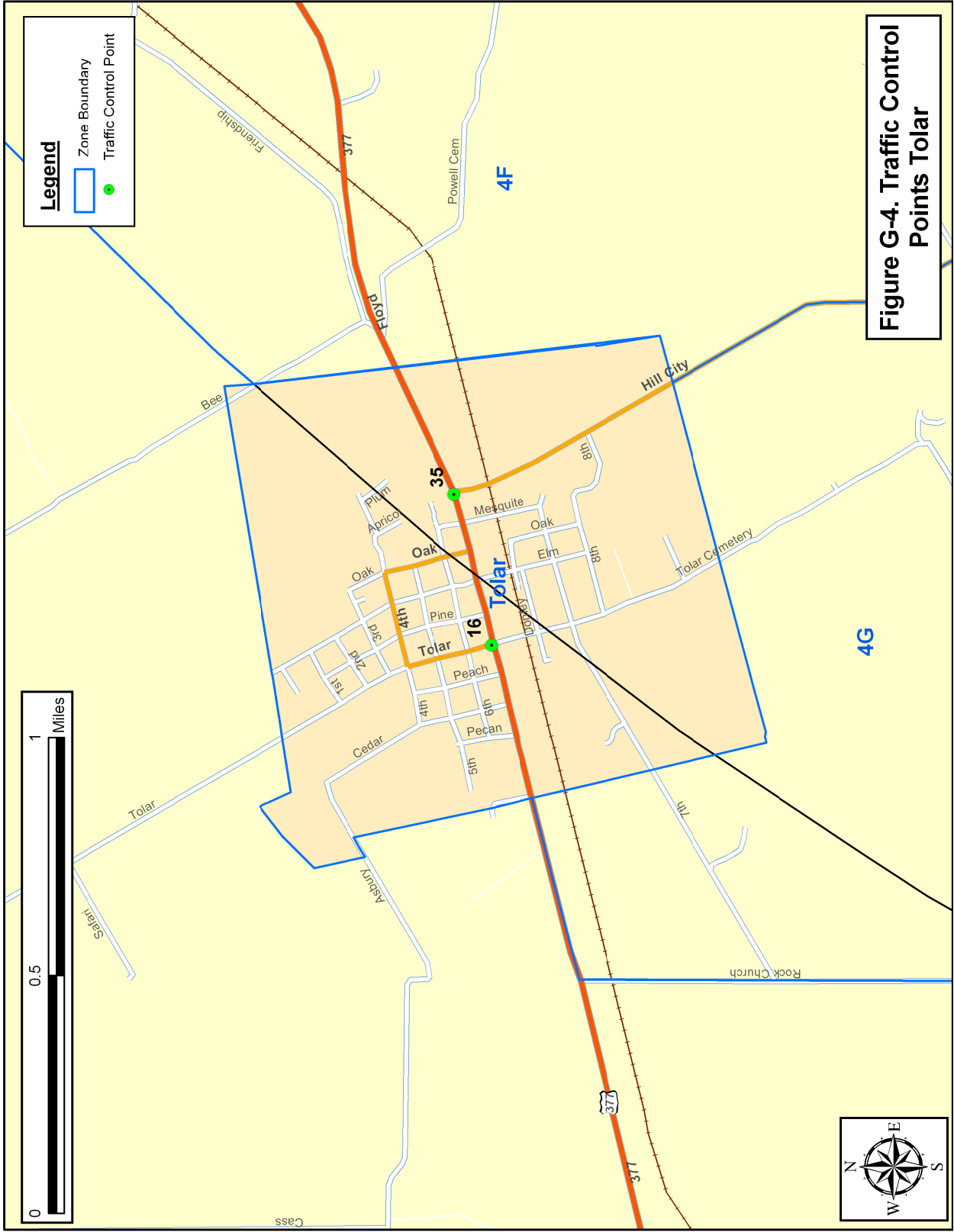


Table G-1. Comanche Peak Traffic Control Point Summary						
Hood County Traffic Control Points						
ZONE	TCP ID	Intersection Location	Municipality	Priority	# of Guides	# of Cones
Granbury	7	STHY 144 - Ramp for US Hwy 377 EB	Granbury	1	2	6
Shadow	10	Acton Hwy (FM 4) & US Hwy 377	Granbury	1	2	12
Tolar	16	US Hwy 377 & FM 201	Tolar	1	1	6
1D	17	Glen Rose Hwy (STHY 144) & Contrary Creek Rd	Granbury	1	2	6
1D	18	Glen Rose Hwy (STHY 144) & Williamson Rd	Granbury	1	1	6
4E	21	Paluxy Hwy (FM 51) & Neri Rd	Granbury	1	1	3
1D	22	Glen Rose Hwy (STHY 144) & Neri Rd	Granbury	1	1	6
Shadow	29	Fall Creek Hwy (FM 167) & Acton Hwy	Granbury	1	1	3
Tolar	35	US Hwy 377 & Hill Hwy (FM 56)	Tolar	1	1	9
Granbury	1	Business US Hwy 377 - Merge With US Hwy 377 EB	Granbury	2	1	0
Granbury	2	STHY 144 - Ramp for US Hwy 377 WB	Granbury	2	2	0
Granbury	3	STHY 144 & FM 51	Granbury	2	2	3
Shadow	5	Houston St (FM 4) & Bridge St	Granbury	2	1	3
Granbury	6	STHY 144 & Pearl St (BUS 377)	Granbury	2	2	6
Granbury	8	E Pearl St (BUS 377) & Crockett St	Granbury	2	1	6
Granbury	9	Pearl St (BUS 377) & Houston St	Granbury	2	1	6
Shadow	11	Travis St & W Bridge St	Granbury	2	1	6
Shadow	28	Cleburne Hwy & Fall Creek Hwy & FM 167	Granbury	2	1	3
Shadow	30	US Hwy 377 & Cleveland Rd (FM 323)	Granbury	2	2	6
Shadow	31	Cleveland Rd (FM 323) & Acton Hwy (FM 4)	Granbury	2	1	6
Shadow	33	Cleburne Hwy & Massey Rd	Granbury	2	1	6
1B	37	Glen Rose Hwy (STHY 144) & Mambrino Hwy	Granbury	2	1	12
Shadow	4	E Bridge St & Crockett St	Granbury	3	1	6
Shadow	12	N Travis St & W Rucker St	Granbury	3	1	6
Shadow	13	N Houston St & Rucker St	Granbury	3	1	6
Shadow	14	E Rucker St & N Crockett St	Granbury	3	1	6
Shadow	15	Morgan St & W Bridge St	Granbury	3	1	6
4C	20	Hill City Hwy (FM 56) & Paluxy Hwy (FM 51)	Tolar	3	2	9
1C	32	Fall Creek Hwy & Monticello Dr & Rollins Rd	Granbury	3	3	9
Hood County Total Manpower/Equipment Needed:					39	168
Somervell County Traffic Control Points						
Glen Rose	36	US Hwy 67 & STHY 144	Glen Rose	1	3	9
CP	19	CPNPP Access Rd & FM 56	Glen Rose	2	1	0
Glen Rose	23	Barnard St & US Hwy 67	Glen Rose	2	2	6
Glen Rose	25	US Hwy 67 & Barnard St (FM 205)	Glen Rose	2	1	6
Glen Rose	26	STHY 144 & FM 56 & FM 205	Glen Rose	2	1	6
Glen Rose	27	US Hwy 67 & FM 56	Glen Rose	2	2	15
Glen Rose	24	Gibbs Blvd & US Hwy 67	Glen Rose	3*	1	0
Somervell County Total Manpower/Equipment Needed:					11	42
Johnson County Traffic Control Points						
Shadow	34	Cleburne Hwy (FM 4) & FM 1131	Godley	2	1	3
Johnson County Total Manpower/Equipment Needed:					1	3
EPZ Total Manpower/Equipment Needed:					51	213

*TCP 24 is a Priority 1 intersection when there is an event at the Amphitheatre, Priority 3 when there is no event.

TCP

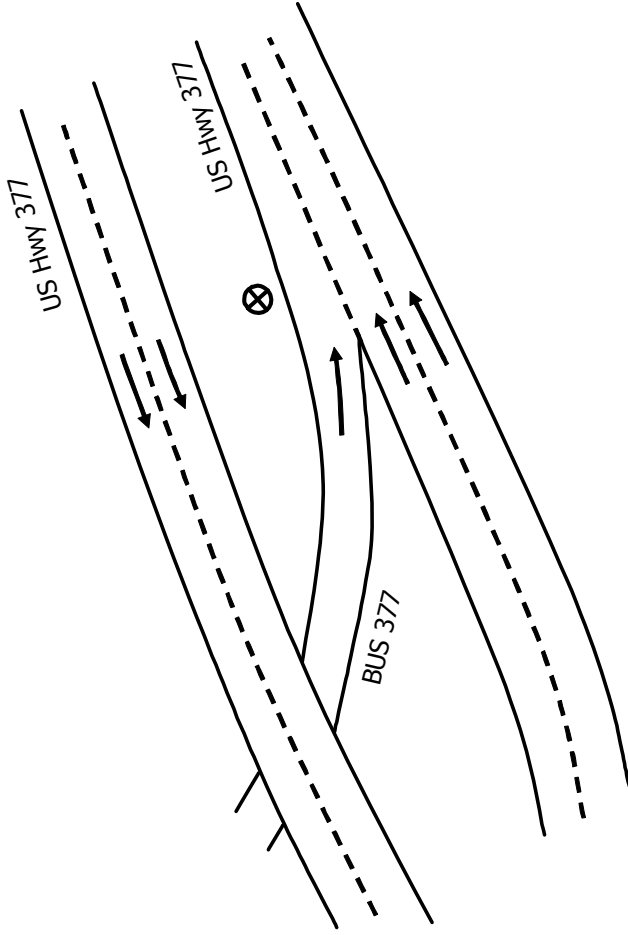
MUNICIPALITY: GRANBURY

LOCATION: BUSINESS US HWY 377 - MERGE WITH US HWY 377 EB

TCP ID: 1

ZONE: GRANBURY

COUNTY: HOOD



****Traffic Guide should position himself safely.**

Key

- MOVEMENT FACILITATED
- MOVEMENT DISCOURAGED/DIVERTED
- ⊗ TRAFFIC GUIDE
- ⊘ STOP SIGN
- ⊗ TRAFFIC BARRICADE
- 2 PER LANE (LOCAL ROADS AND RAMPS)
- 4 PER LANE (FREEWAY AND RAMPS)
- TRAFFIC SIGNAL
- TRAFFIC CONES SPACED TO DISCOURAGE TRAFFIC BUT ALLOW PASSAGE (3 PER LANE):
- ● ● 8 ft

DESCRIPTION

1. Facilitate the merge of traffic from Business US 377. Park patrol car in the shoulder with lights flashing.

MANPOWER/EQUIPMENT

- 1 Traffic Guide(s)

LOCATION PRIORITY

- 2

TCP

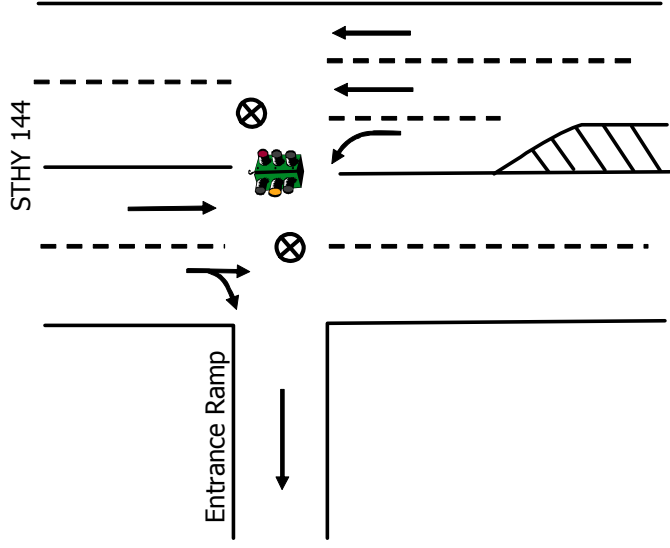
MUNICIPALITY: GRANBURY

LOCATION: STHY 144 – Ramp for US Hwy 377 WB

TCP ID: 2

ZONE: GRANBURY

COUNTY: HOOD



****Traffic Guide should position himself safely.**

- Key
- MOVEMENT FACILITATED
 - MOVEMENT DISCOURAGED/DIVERTED
 - ⊗ TRAFFIC GUIDE
 - ⊘ STOP SIGN
 - ⊗ TRAFFIC BARRICADE
 - 2 PER LANE (LOCAL ROADS AND RAMPS)
 - 4 PER LANE (FREEWAY AND RAMPS)
 - TRAFFIC SIGNAL
 - TRAFFIC CONES SPACED TO DISCOURAGE TRAFFIC BUT ALLOW PASSAGE (3 PER LANE):
 - ● ● 8 ft

DESCRIPTION

1. Facilitate flow of traffic onto entrance ramp for US 377.

MANPOWER/EQUIPMENT

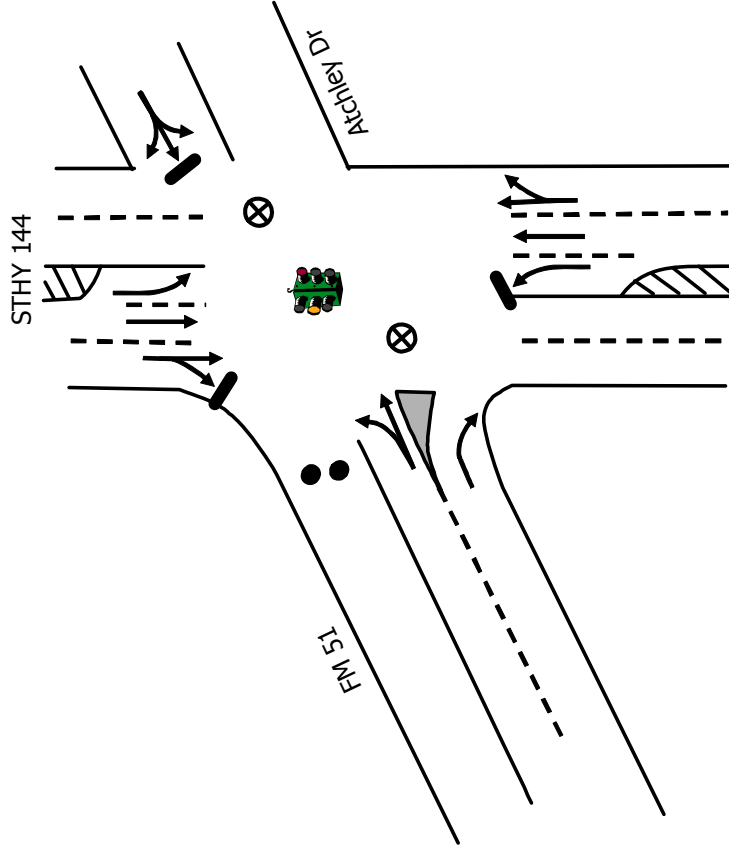
2. Traffic Guide(s)

LOCATION PRIORITY

- 2

TCP

MUNICIPALITY: GRANBURY
LOCATION: STHY 144 & FM 51
TCP ID: 3
ZONE: GRANBURY
COUNTY: HOOD



****Traffic Guide should position himself safely.**

Key

- MOVEMENT FACILITATED
- MOVEMENT DISCOURAGED/DIVERTED
- ⊗ TRAFFIC GUIDE
- ⊘ STOP SIGN
- ⊗ TRAFFIC BARRICADE
- 2 PER LANE (LOCAL ROADS AND RAMPS)
- 4 PER LANE (FREEWAY AND RAMPS)
- TRAFFIC SIGNAL
- TRAFFIC CONES SPACED TO DISCOURAGE TRAFFIC BUT ALLOW PASSAGE (3 PER LANE):

DESCRIPTION

1. Discourage westbound movement along FM 51

MANPOWER/EQUIPMENT

2. Traffic Guide(s)
3. Traffic Cones

LOCATION PRIORITY

- 2

TCP

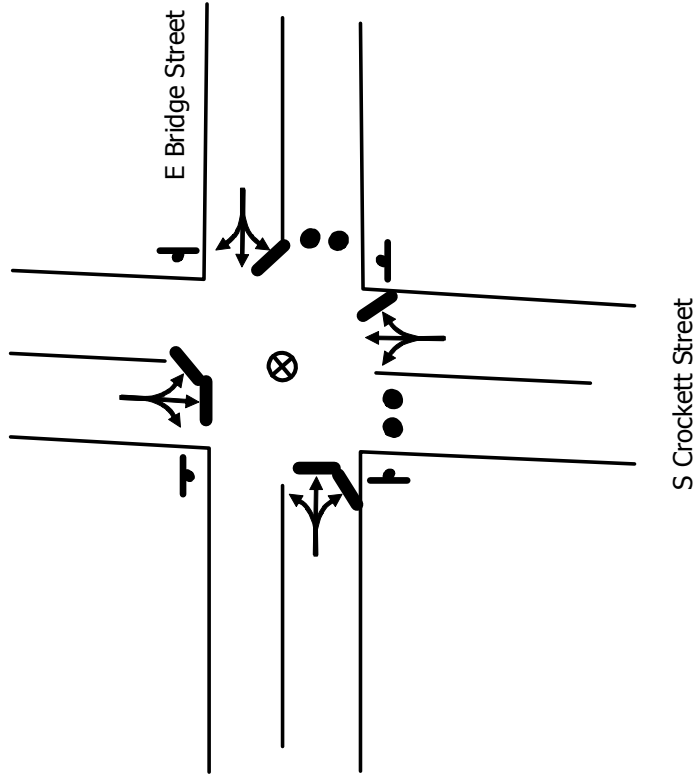
MUNICIPALITY: GRANBURY

LOCATION: E BRIDGE ST & CROCKETT ST

TCP ID: 4

ZONE: SHADOW

COUNTY: HOOD



****Traffic Guide should position himself safely.**

Key

- MOVEMENT FACILITATED
- MOVEMENT DISCOURAGED/DIVERTED
- ⊗ TRAFFIC GUIDE
- ⊘ STOP SIGN
- ⊗ TRAFFIC BARRICADE
- 2 PER LANE (LOCAL ROADS AND RAMPS)
- 4 PER LANE (FREEWAY AND RAMPS)
- TRAFFIC SIGNAL
- TRAFFIC CONES SPACED TO DISCOURAGE TRAFFIC BUT ALLOW PASSAGE (3 PER LANE):
- ● ● 8 ft

DESCRIPTION

1. Discourage eastbound movement along E. Bridge St.
2. Discourage southbound movement along S. Crockett St.

MANPOWER/EQUIPMENT

1. Traffic Guide(s)
6. Traffic Cones

LOCATION PRIORITY

3

TCP

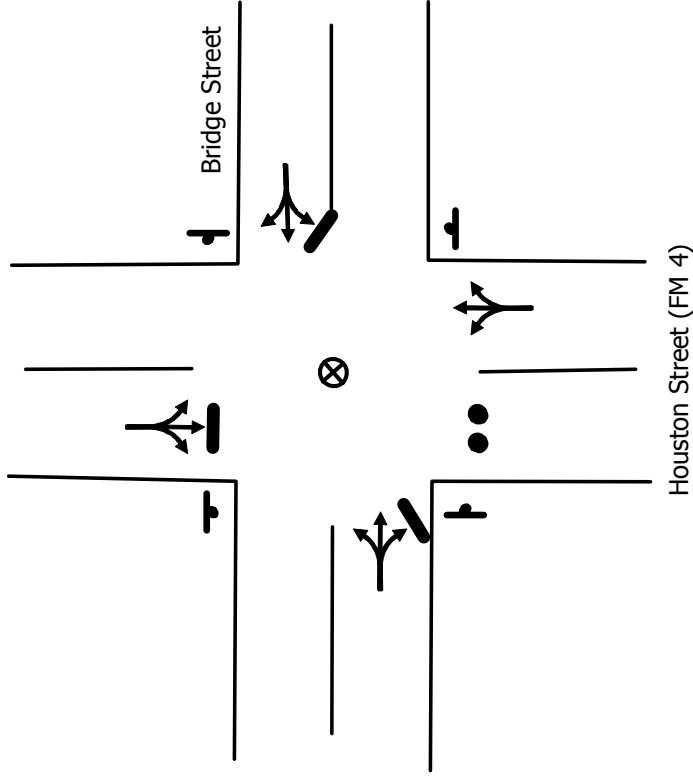
MUNICIPALITY: GRANBURY

LOCATION: HOUSTON ST (FM 4) & BRIDGE ST

TCP ID: 5

ZONE: SHADOW

COUNTY: HOOD



****Traffic Guide should position himself safely.**

Key

- MOVEMENT FACILITATED
- MOVEMENT DISCOURAGED/DIVERTED
- ⊗ TRAFFIC GUIDE
- ⊘ STOP SIGN
- ⊗ TRAFFIC BARRICADE
- 2 PER LANE (LOCAL ROADS AND RAMPS)
- 4 PER LANE (FREEWAY AND RAMPS)
- TRAFFIC SIGNAL
- TRAFFIC CONES SPACED TO DISCOURAGE TRAFFIC BUT ALLOW PASSAGE (3 PER LANE):

2 ft
3 ft
8 ft

DESCRIPTION

1. Discourage southbound movement along Houston St.
2. Facilitate flow of traffic northbound on Houston St.

MANPOWER/EQUIPMENT

1. Traffic Guide(s)
3. Traffic Cones

LOCATION PRIORITY

- 2

TCP

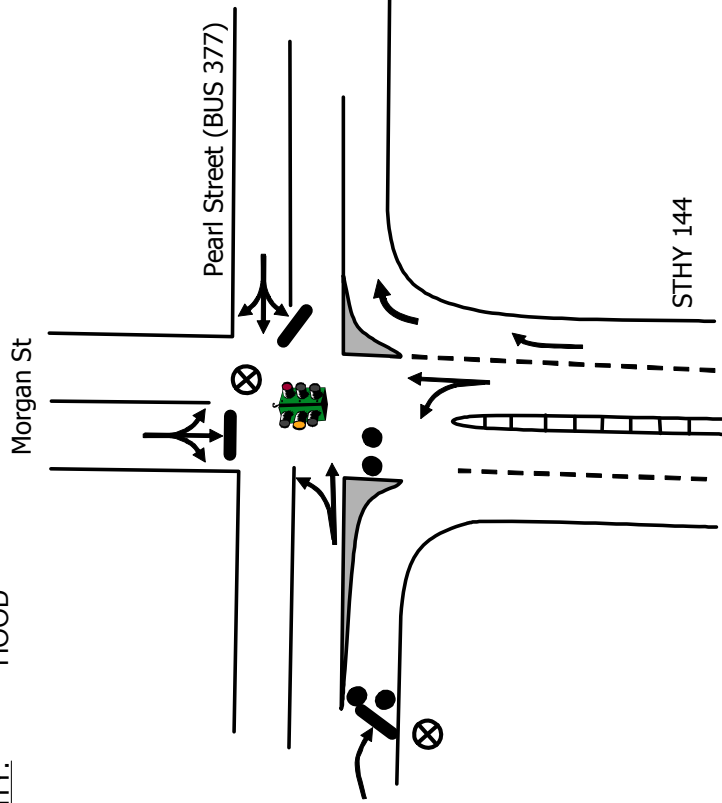
MUNICIPALITY: GRANBURY

LOCATION: STHY 144 & PEARL ST (BUS 377)

TCP ID: 6

ZONE: GRANBURY

COUNTY: HOOD



****Traffic Guide should position himself safely.**

Key

- MOVEMENT FACILITATED
- MOVEMENT DISCOURAGED/DIVERTED
- ⊗ TRAFFIC GUIDE
- ⊘ STOP SIGN
- ⊗ TRAFFIC BARRICADE
- 2 PER LANE (LOCAL ROADS AND RAMPS)
- 4 PER LANE (FREEWAY AND RAMPS)
- TRAFFIC SIGNAL
- TRAFFIC CONES SPACED TO DISCOURAGE TRAFFIC BUT ALLOW PASSAGE (3 PER LANE):

DESCRIPTION

1. Discourage southbound movement along STHY 144.

MANPOWER/EQUIPMENT

- 2 Traffic Guide(s)
- 6 Traffic Cones

LOCATION PRIORITY

- 2

TCP

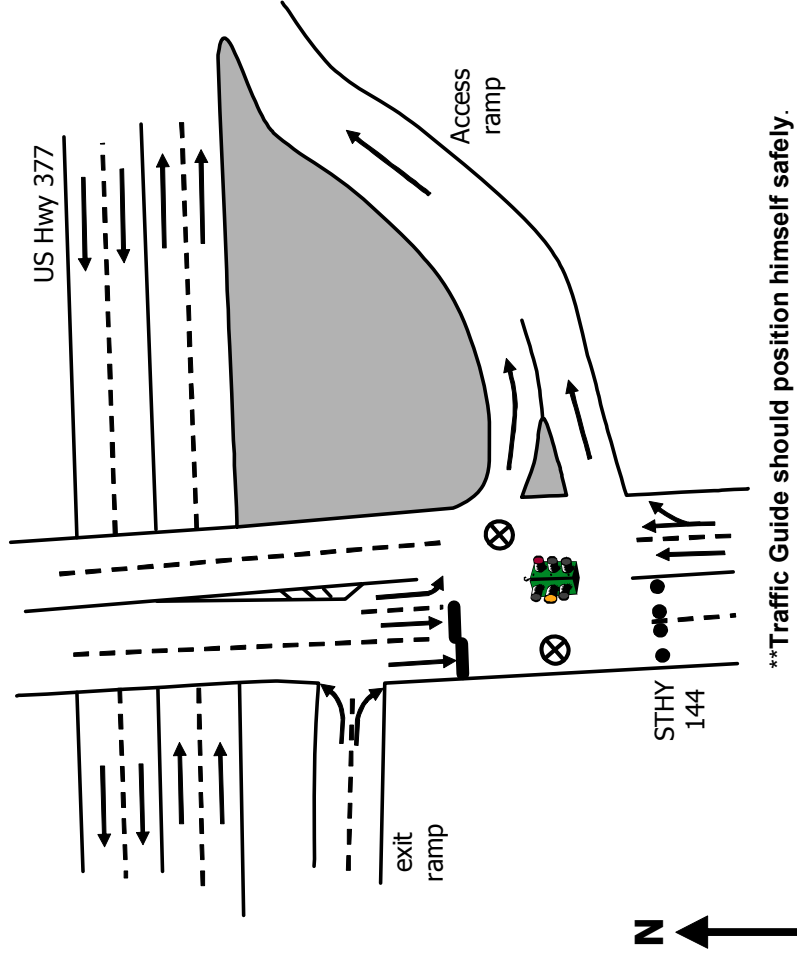
MUNICIPALITY: GRANBURY

LOCATION: STHY 144 – Ramp for US Hwy 377 EB

TCP ID: 7

ZONE: GRANBURY

COUNTY: HOOD



****Traffic Guide should position himself safely.**

Key

- MOVEMENT FACILITATED
- MOVEMENT DISCOURAGED/DIVERTED
- ⊗ TRAFFIC GUIDE
- ⊘ STOP SIGN
- ⊗ TRAFFIC BARRICADE
- 2 PER LANE (LOCAL ROADS AND RAMPS)
- 4 PER LANE (FREEWAY AND RAMPS)
- TRAFFIC SIGNAL
- TRAFFIC CONES SPACED TO DISCOURAGE TRAFFIC BUT ALLOW PASSAGE (3 PER LANE):
- ● ● 8 ft

DESCRIPTION

1. Discourage southbound movement along STHY 144.
2. Facilitate access to US Hwy 377 eastbound.

MANPOWER/EQUIPMENT

- 2 Traffic Guide(s)
- 6 Traffic Cones

LOCATION PRIORITY

- 1

TCP

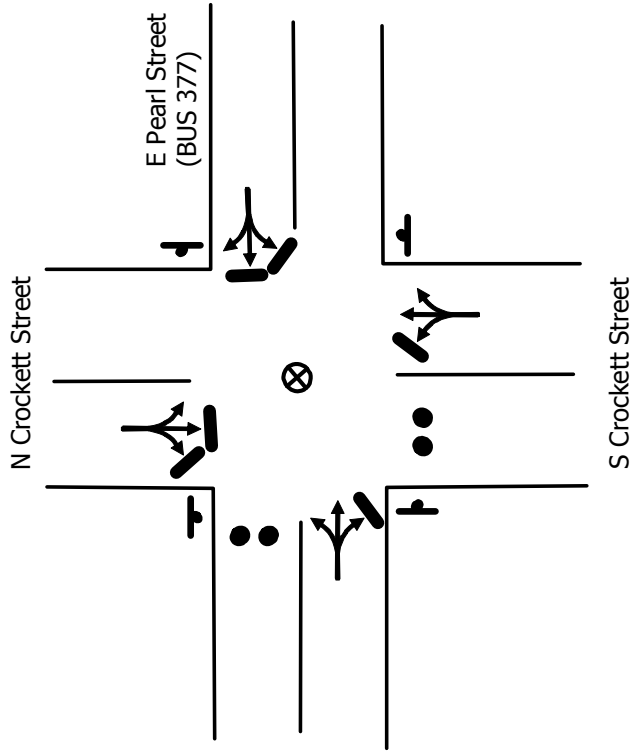
MUNICIPALITY: GRANBURY

LOCATION: E PEARL ST (BUS 377) & CROCKETT ST

TCP ID: 8

ZONE: GRANBURY

COUNTY: HOOD



****Traffic Guide should position himself safely.**

Key

- MOVEMENT FACILITATED
- MOVEMENT DISCOURAGED/DIVERTED
- ⊗ TRAFFIC GUIDE
- ⊘ STOP SIGN
- ⊗ TRAFFIC BARRICADE
- 2 PER LANE (LOCAL ROADS AND RAMPS)
- 4 PER LANE (FREEWAY AND RAMPS)
- TRAFFIC SIGNAL
- TRAFFIC CONES SPACED TO DISCOURAGE TRAFFIC BUT ALLOW PASSAGE (3 PER LANE):

2 ft

3 ft

8 ft

DESCRIPTION

1. Discourage westbound movement along BUS 377.
2. Discourage southbound movement along Crockett St.

MANPOWER/EQUIPMENT

1. Traffic Guide(s)
6. Traffic Cones

LOCATION PRIORITY

2

TCP

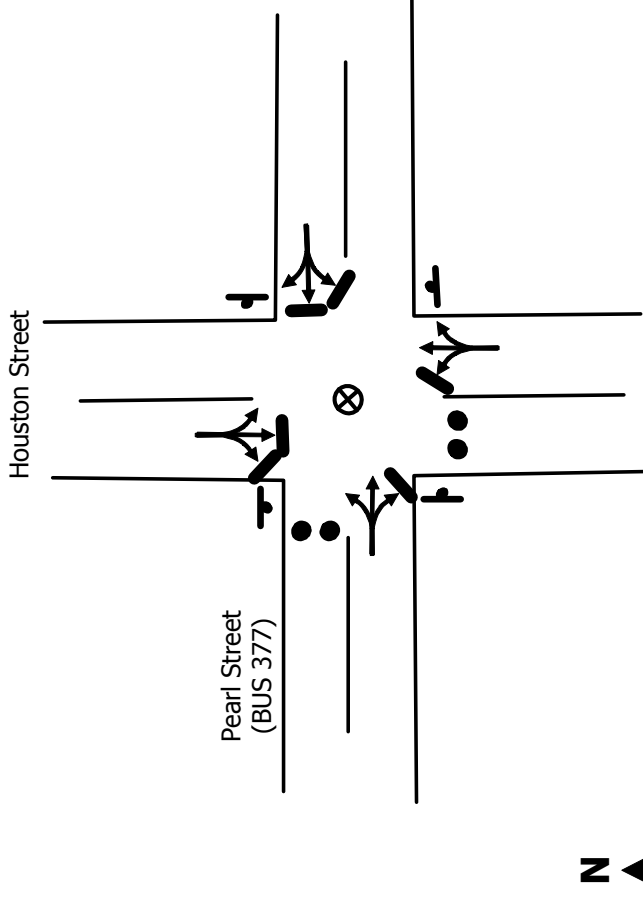
MUNICIPALITY: GRANBURY

LOCATION: PEARL ST (BUS 377) & HOUSTON ST

TCP ID: 9

ZONE: GRANBURY

COUNTY: HOOD



Key

- MOVEMENT FACILITATED
- MOVEMENT DISCOURAGED/DIVERTED
- ⊗ TRAFFIC GUIDE
- ⬮ STOP SIGN
- ⊗ TRAFFIC BARRICADE
- 2 PER LANE (LOCAL ROADS AND RAMPS)
- 4 PER LANE (FREEWAY AND RAMPS)
- TRAFFIC SIGNAL
- TRAFFIC CONES SPACED TO DISCOURAGE TRAFFIC BUT ALLOW PASSAGE (3 PER LANE):

2 ft
3 ft
8 ft

DESCRIPTION

1. Discourage westbound movement along BUS 377.
2. Discourage southbound movement along Houston St.

MANPOWER/EQUIPMENT

- 1 Traffic Guide(s)
- 6 Traffic Cones

LOCATION PRIORITY

2

****Traffic Guide should position himself safely.**

TCP

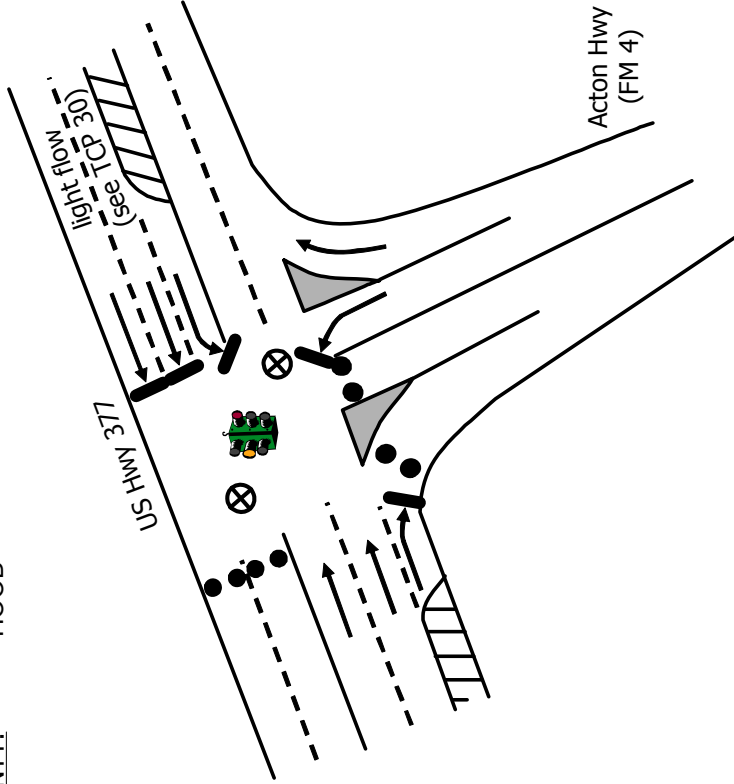
MUNICIPALITY: GRANBURY

LOCATION: ACTON HWY (FM 4) & US HWY 377

TCP ID: 10

ZONE: SHADOW

COUNTY: HOOD



Key

- MOVEMENT FACILITATED
- MOVEMENT DISCOURAGED/DIVERTED
- ⊗ TRAFFIC GUIDE
- ⊘ STOP SIGN
- ⊗ TRAFFIC BARRICADE
- 2 PER LANE (LOCAL ROADS AND RAMPS)
- 4 PER LANE (FREEWAY AND RAMPS)
- TRAFFIC SIGNAL
- TRAFFIC CONES SPACED TO DISCOURAGE TRAFFIC BUT ALLOW PASSAGE (3 PER LANE):

2 ft
3 ft
8 ft

DESCRIPTION

1. Discourage westbound movement along US Hwy 377.
2. Discourage southbound movement along FM 4.

MANPOWER/EQUIPMENT

- 2 Traffic Guide(s)
- 12 Traffic Cones

LOCATION PRIORITY

1

****Traffic Guide should position himself safely.**

TCP

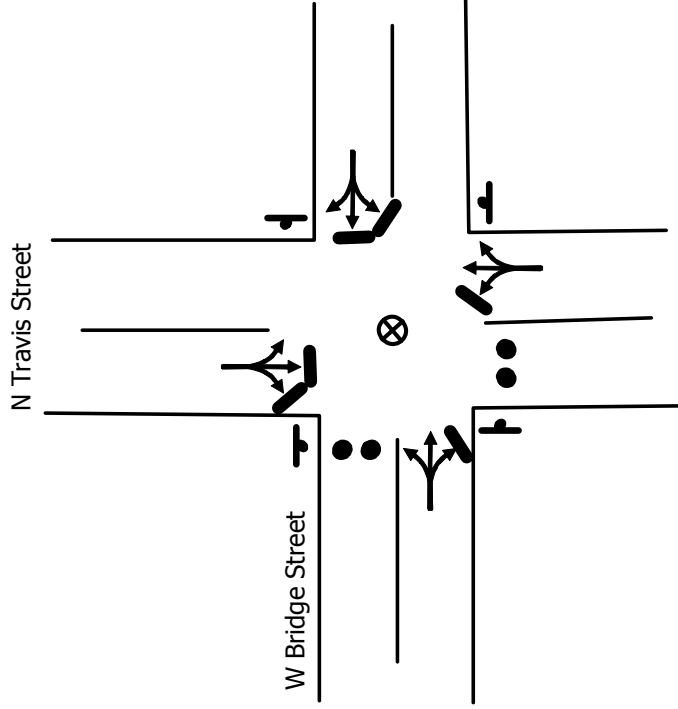
MUNICIPALITY: GRANBURY

LOCATION: TRAVIS ST & W BRIDGE ST

TCP ID: 11

ZONE: SHADOW

COUNTY: HOOD



****Traffic Guide should position himself safely.**

Key

- MOVEMENT FACILITATED
- MOVEMENT DISCOURAGED/DIVERTED
- ⊗ TRAFFIC GUIDE
- ⊘ STOP SIGN
- ⊗ TRAFFIC BARRICADE
- 2 PER LANE (LOCAL ROADS AND RAMPS)
- 4 PER LANE (FREEWAY AND RAMPS)
- TRAFFIC SIGNAL
- TRAFFIC CONES SPACED TO DISCOURAGE TRAFFIC BUT ALLOW PASSAGE (3 PER LANE):
- ● ● 8 ft

DESCRIPTION

1. Discourage southbound movement along Travis St.
2. Discourage westbound movement along Bridge St.

MANPOWER/EQUIPMENT

- 1 Traffic Guide(s)
- 6 Traffic Cones

LOCATION PRIORITY

- 2

TCP

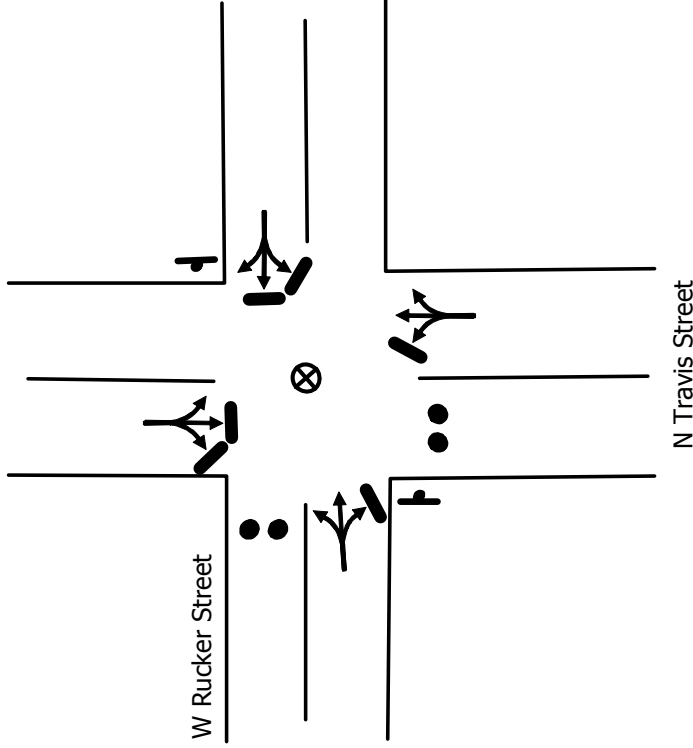
MUNICIPALITY: GRANBURY

LOCATION: N TRAVIS ST & W RUCKER ST

TCP ID: 12

ZONE: SHADOW

COUNTY: HOOD



****Traffic Guide should position himself safely.**

Key

- MOVEMENT FACILITATED
- MOVEMENT DISCOURAGED/DIVERTED
- ⊗ TRAFFIC GUIDE
- ⊘ STOP SIGN
- ⊗ TRAFFIC BARRICADE
- 2 PER LANE (LOCAL ROADS AND RAMPS)
- 4 PER LANE (FREEWAY AND RAMPS)
- TRAFFIC SIGNAL
- TRAFFIC CONES SPACED TO DISCOURAGE TRAFFIC BUT ALLOW PASSAGE (3 PER LANE):
- ● ● 8 ft

DESCRIPTION

1. Discourage westbound movement along Rucker St.
2. Discourage southbound movement along Travis St.

MANPOWER/EQUIPMENT

1. Traffic Guide(s)
6. Traffic Cones

LOCATION PRIORITY

3

TCP

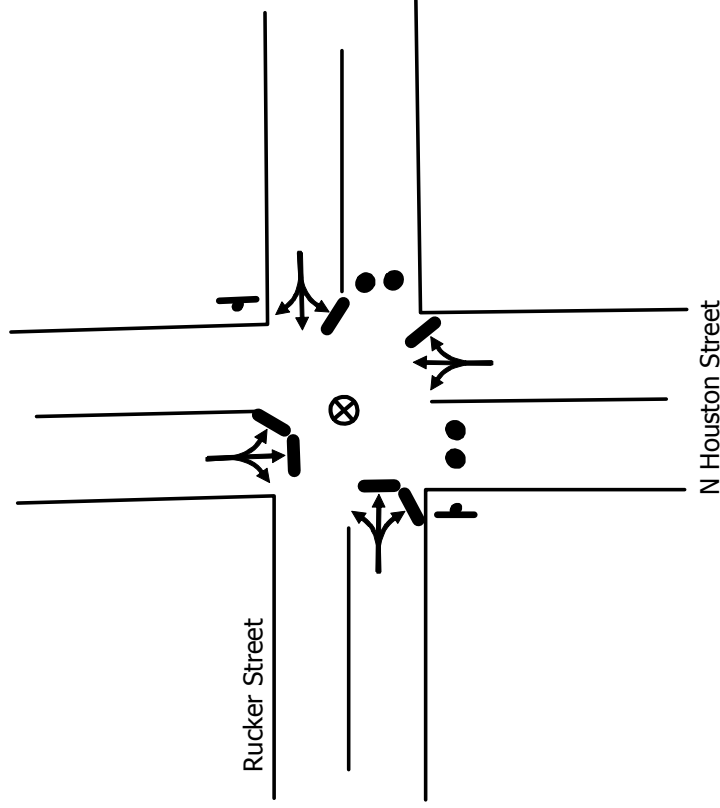
MUNICIPALITY: GRANBURY

LOCATION: N HOUSTON ST & RUCKER ST

TCP ID: 13

ZONE: SHADOW

COUNTY: HOOD



****Traffic Guide should position himself safely.**

Key

- MOVEMENT FACILITATED
- MOVEMENT DISCOURAGED/DIVERTED
- ⊗ TRAFFIC GUIDE
- ⊙ STOP SIGN
- ⊗ TRAFFIC BARRICADE
- 2 PER LANE (LOCAL ROADS AND RAMPS)
- 4 PER LANE (FREEWAY AND RAMPS)
- TRAFFIC SIGNAL
- TRAFFIC CONES SPACED TO DISCOURAGE TRAFFIC BUT ALLOW PASSAGE (3 PER LANE):
- ● ● 8 ft

DESCRIPTION

1. Discourage eastbound movement along Rucker St.
2. Discourage southbound movement along Houston St.

MANPOWER/EQUIPMENT

- 1 Traffic Guide(s)
- 6 Traffic Cones

LOCATION PRIORITY

3

TCP

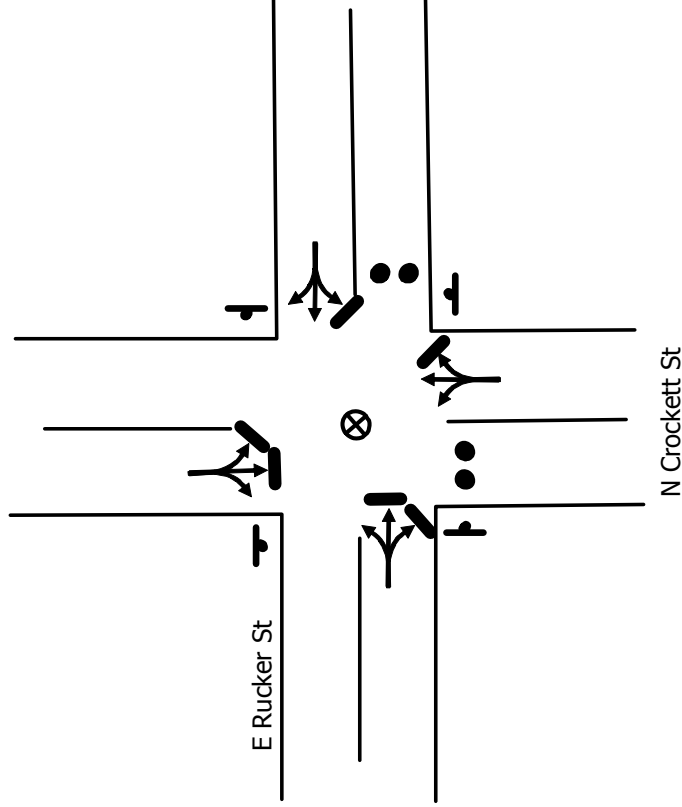
MUNICIPALITY: GRANBURY

LOCATION: E RUCKER STREET & N CROCKETT STREET

TCP ID: 14

ZONE: SHADOW

COUNTY: HOOD



****Traffic Guide should position himself safely.**

Key

- MOVEMENT FACILITATED
- MOVEMENT DISCOURAGED/DIVERTED
- ⊗ TRAFFIC GUIDE
- ⊘ STOP SIGN
- ⊗ TRAFFIC BARRICADE
- 2 PER LANE (LOCAL ROADS AND RAMPS)
- 4 PER LANE (FREEWAY AND RAMPS)
- TRAFFIC SIGNAL
- TRAFFIC CONES SPACED TO DISCOURAGE TRAFFIC BUT ALLOW PASSAGE (3 PER LANE):

2 ft

3 ft

8 ft

DESCRIPTION

1. Discourage eastbound movement along Rucker St.
2. Discourage southbound movement along Crockett St.

MANPOWER/EQUIPMENT

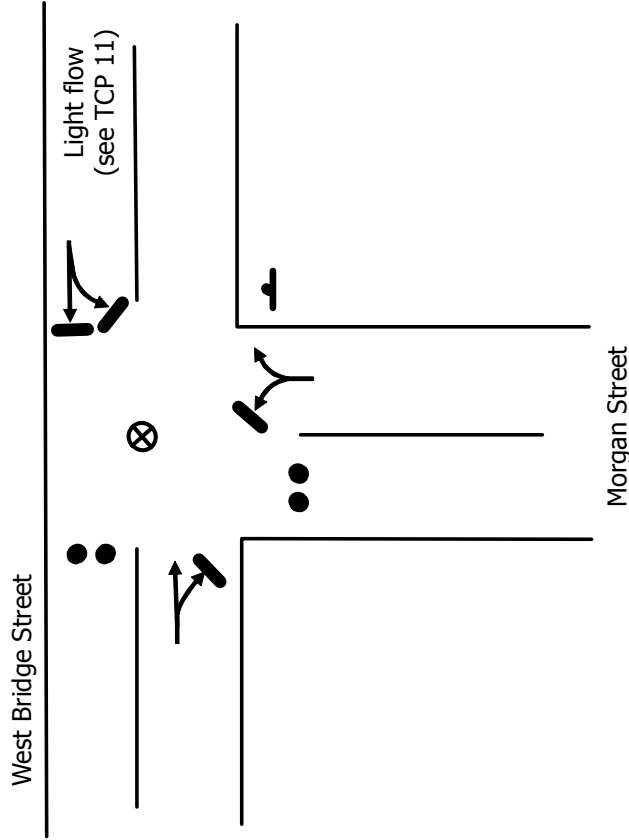
- 1 Traffic Guide(s)
- 6 Traffic Cones

LOCATION PRIORITY

3

TCP

MUNICIPALITY: GRANBURY
LOCATION: MORGAN ST & W BRIDGE ST
TCP ID: 15
ZONE: SHADOW
COUNTY: HOOD



Key

- MOVEMENT FACILITATED
- MOVEMENT DISCOURAGED/DIVERTED
- ⊗ TRAFFIC GUIDE
- ⊘ STOP SIGN
- ⊗ TRAFFIC BARRICADE
- 2 PER LANE (LOCAL ROADS AND RAMPS)
- 4 PER LANE (FREEWAY AND RAMPS)
- TRAFFIC SIGNAL
- TRAFFIC CONES SPACED TO DISCOURAGE TRAFFIC BUT ALLOW PASSAGE (3 PER LANE):

2 ft
3 ft
8 ft

DESCRIPTION

1. Discourage westbound movement along West Bridge St.
2. Discourage southbound movement along Morgan St.

MANPOWER/EQUIPMENT

- 1 Traffic Guide(s)
- 6 Traffic Cones

LOCATION PRIORITY

3

****Traffic Guide should position himself safely.**

TCP

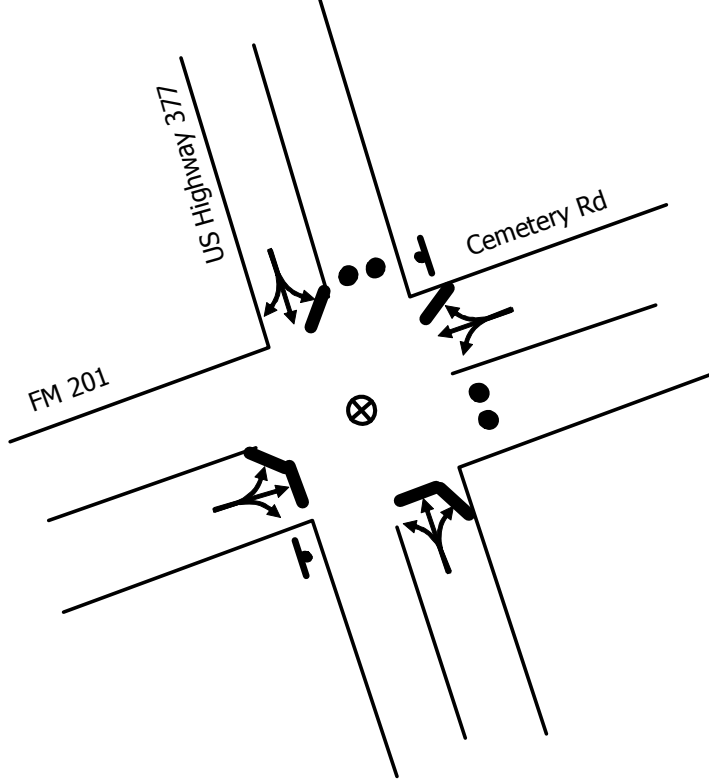
MUNICIPALITY: TOLAR

LOCATION: US HWY 377 & FM 201

TCP ID: 16

ZONE: TOLAR

COUNTY: HOOD



Key

- MOVEMENT FACILITATED
- MOVEMENT DISCOURAGED/DIVERTED
- ⊗ TRAFFIC GUIDE
- ⊘ STOP SIGN
- ⊗ TRAFFIC BARRICADE
- 2 PER LANE (LOCAL ROADS AND RAMPS)
- 4 PER LANE (FREEWAY AND RAMPS)
- TRAFFIC SIGNAL
- TRAFFIC CONES SPACED TO DISCOURAGE TRAFFIC BUT ALLOW PASSAGE (3 PER LANE):
- ● ● 8 ft

DESCRIPTION

1. Discourage eastbound movement along US 377.
2. Facilitate westbound movement along US 377.
3. Discourage southbound movement along Cemetery Rd.

MANPOWER/EQUIPMENT

- 1 Traffic Guide(s)
- 6 Traffic Cones

LOCATION PRIORITY

1

****Traffic Guide should position himself safely.**

TCP

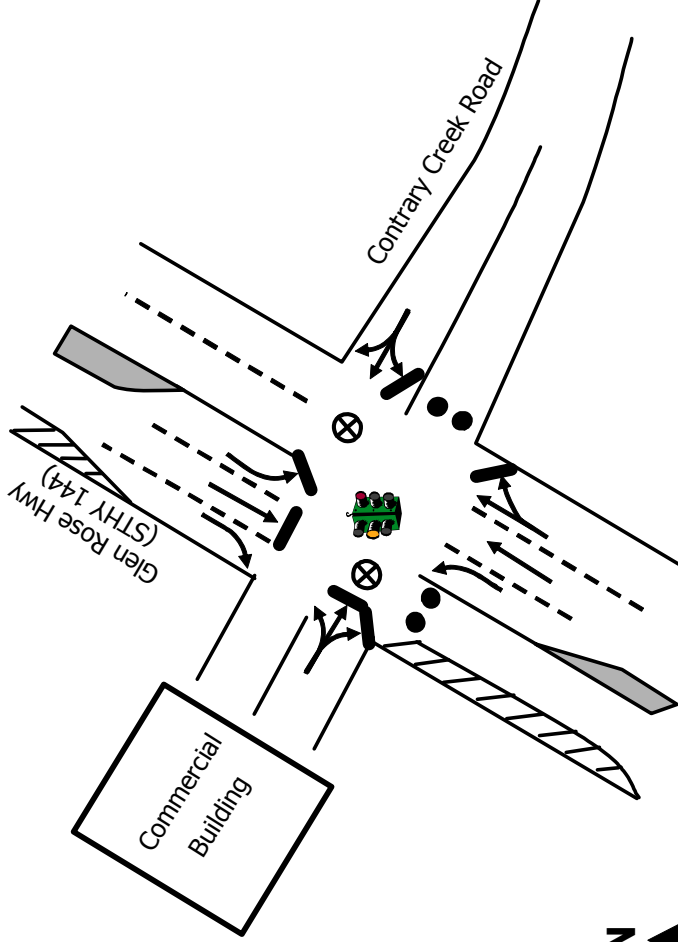
MUNICIPALITY: GRANBURY

LOCATION: GLEN ROSE HWY (STHY 144) & CONTRARY CREEK RD

TCP ID: 17

ZONE: 1D

COUNTY: HOOD



****Traffic Guide should position himself safely.**

Key

- MOVEMENT FACILITATED
- MOVEMENT DISCOURAGED/DIVERTED
- ⊗ TRAFFIC GUIDE
- ⊘ STOP SIGN
- ⊗ TRAFFIC BARRICADE
- 2 PER LANE (LOCAL ROADS AND RAMPS)
- 4 PER LANE (FREEWAY AND RAMPS)
- TRAFFIC SIGNAL
- TRAFFIC CONES SPACED TO DISCOURAGE TRAFFIC BUT ALLOW PASSAGE (3 PER LANE):

2 ft
3 ft
8 ft

DESCRIPTION

1. Discourage southbound movement along STHY 144.
2. Discourage eastbound movement along Contrary Creek Rd.

MANPOWER/EQUIPMENT

- 2 Traffic Guide(s)
- 6 Traffic Cones

LOCATION PRIORITY

1

TCP

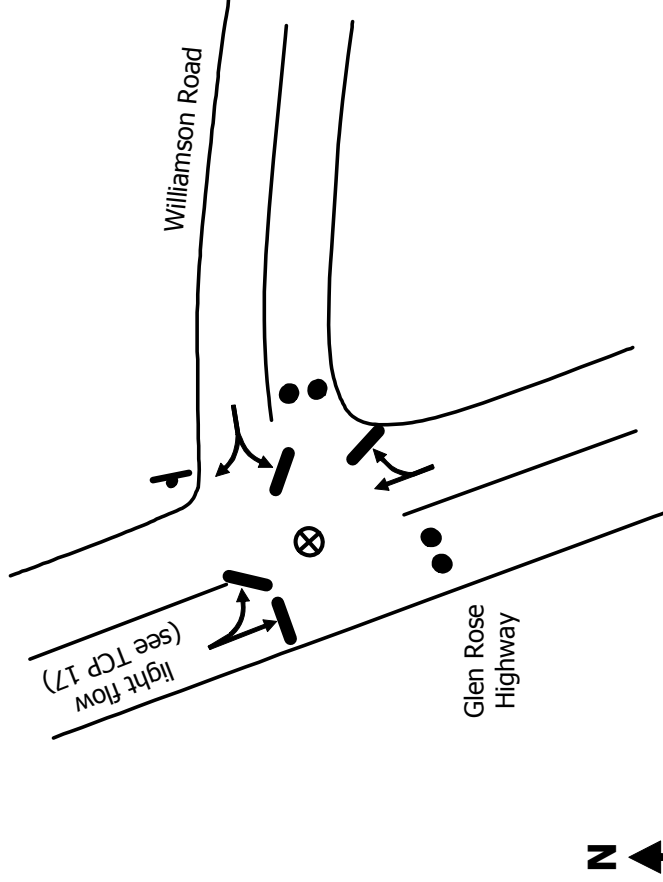
MUNICIPALITY: GRANBURY

LOCATION: GLEN ROSE HWY (STHY 144) & WILLIAMSON RD

TCP ID: 18

ZONE: 1D

COUNTY: HOOD



****Traffic Guide should position himself safely.**

<u>Key</u>	
→	MOVEMENT FACILITATED
→	MOVEMENT DISCOURAGED/DIVERTED
⊗	TRAFFIC GUIDE
⊘	STOP SIGN
⊗	TRAFFIC BARRICADE
	2 PER LANE (LOCAL ROADS AND RAMPS)
	4 PER LANE (FREEWAY AND RAMPS)
🚦	TRAFFIC SIGNAL
●	TRAFFIC CONES SPACED TO DISCOURAGE TRAFFIC BUT ALLOW PASSAGE (3 PER LANE):
● ● ●	8 ft

DESCRIPTION

1. Discourage southbound movement along STHY 144.
2. Discourage eastbound movement along Williamson Rd.

MANPOWER/EQUIPMENT

- | | |
|---|------------------|
| 1 | Traffic Guide(s) |
| 6 | Traffic Cones |

LOCATION PRIORITY

- | |
|---|
| 1 |
|---|

TCP

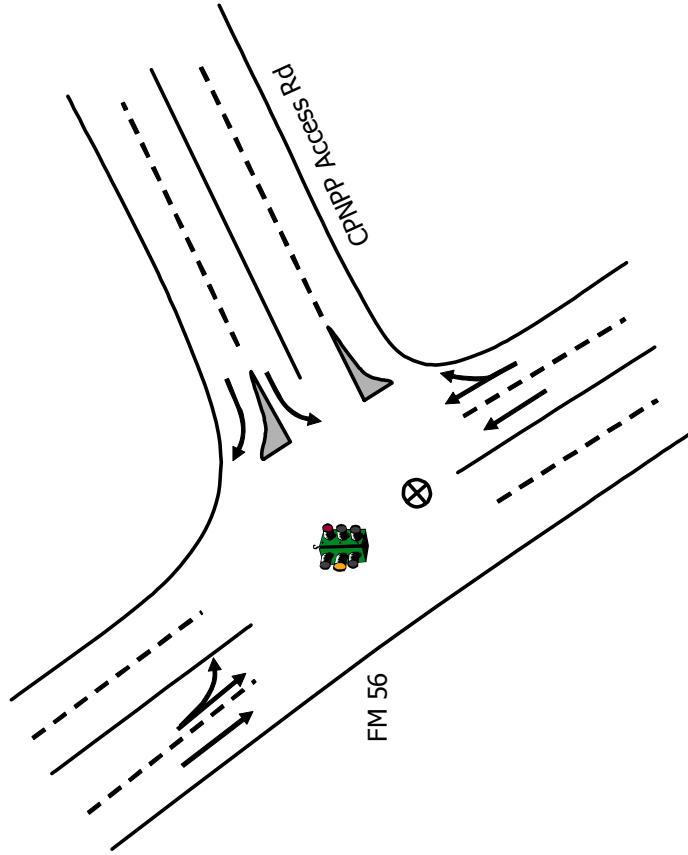
MUNICIPALITY: GLEN ROSE

LOCATION: CPNPP ACCESS RD & FM 56

TCP ID: 19

ZONE: CP

COUNTY: SOMERVELL



****Traffic Guide should position himself safely.**

Key

- MOVEMENT FACILITATED
- MOVEMENT DISCOURAGED/DIVERTED
- ⊗ TRAFFIC GUIDE
- ⊙ STOP SIGN
- ⊗ TRAFFIC BARRICADE
- 2 PER LANE (LOCAL ROADS AND RAMPS)
- 4 PER LANE (FREEWAY AND RAMPS)
- TRAFFIC SIGNAL
- TRAFFIC CONES SPACED TO DISCOURAGE TRAFFIC BUT ALLOW PASSAGE (3 PER LANE):
- ● ● 8 ft

DESCRIPTION

1. Facilitate flow of traffic coming from CPNPP.

MANPOWER/EQUIPMENT

- 1 Traffic Guide(s)

LOCATION PRIORITY

- 2

TCP

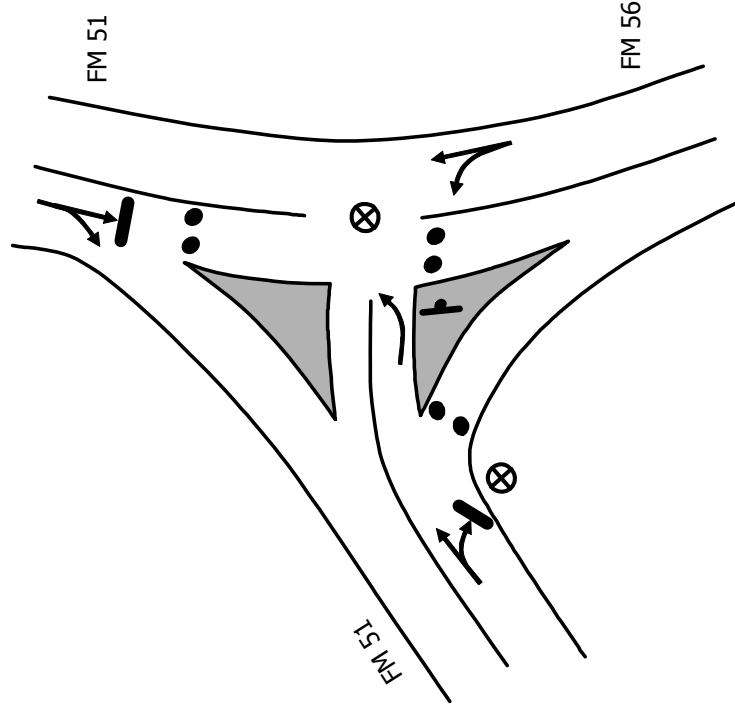
MUNICIPALITY: TOLAR

LOCATION: HILL CITY HWY (FM 56) & PALUXY HWY (FM 51)

TCP ID: 20

ZONE: 4C

COUNTY: HOOD



****Traffic Guide should position himself safely.**

Key

- MOVEMENT FACILITATED
- MOVEMENT DISCOURAGED/DIVERTED
- ⊗ TRAFFIC GUIDE
- ⊘ STOP SIGN
- ⊗ TRAFFIC BARRICADE
- 2 PER LANE (LOCAL ROADS AND RAMPS)
- 4 PER LANE (FREEWAY AND RAMPS)
- TRAFFIC SIGNAL
- TRAFFIC CONES SPACED TO DISCOURAGE TRAFFIC BUT ALLOW PASSAGE (3 PER LANE):
- ● ● 8 ft

DESCRIPTION

1. Discourage southbound movement along FM 56.

MANPOWER/EQUIPMENT

- 2 Traffic Guide(s)
- 9 Traffic Cones

LOCATION PRIORITY

3

TCP

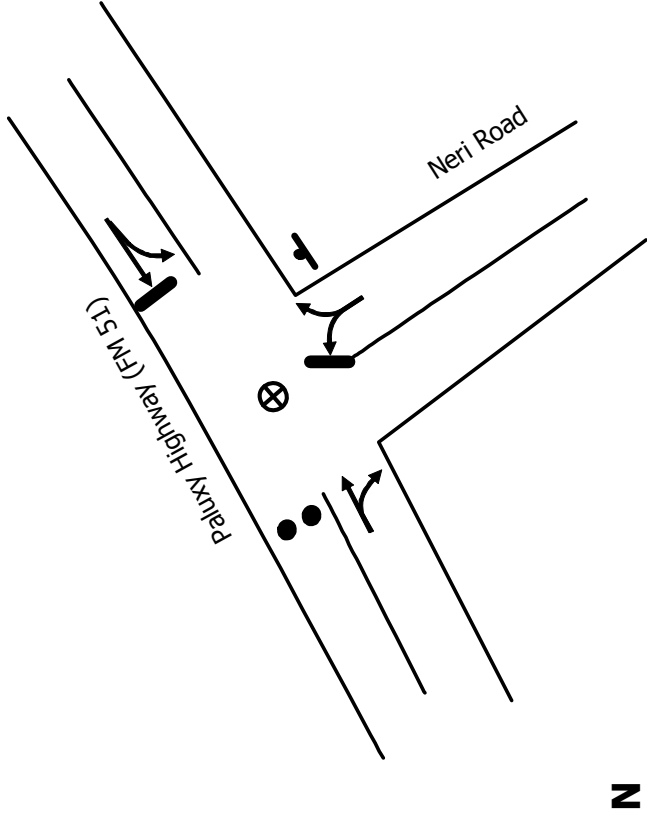
MUNICIPALITY: GRANBURY

LOCATION: PALUXY HWY (FM 51) & NERI RD

TCP ID: 21

ZONE: 4E

COUNTY: HOOD



Key

- MOVEMENT FACILITATED
- MOVEMENT DISCOURAGED/DIVERTED
- ⊗ TRAFFIC GUIDE
- ⊙ STOP SIGN
- ⊗ TRAFFIC BARRICADE
- 2 PER LANE (LOCAL ROADS AND RAMPS)
- 4 PER LANE (FREEWAY AND RAMPS)
- TRAFFIC SIGNAL
- TRAFFIC CONES SPACED TO DISCOURAGE TRAFFIC BUT ALLOW PASSAGE (3 PER LANE):
- ● ● 8 ft

DESCRIPTION

1. Discourage southbound movement along FM 51.

MANPOWER/EQUIPMENT

- 1 Traffic Guide(s)
- 3 Traffic Cones

LOCATION PRIORITY

- 1

****Traffic Guide should position himself safely.**

TCP

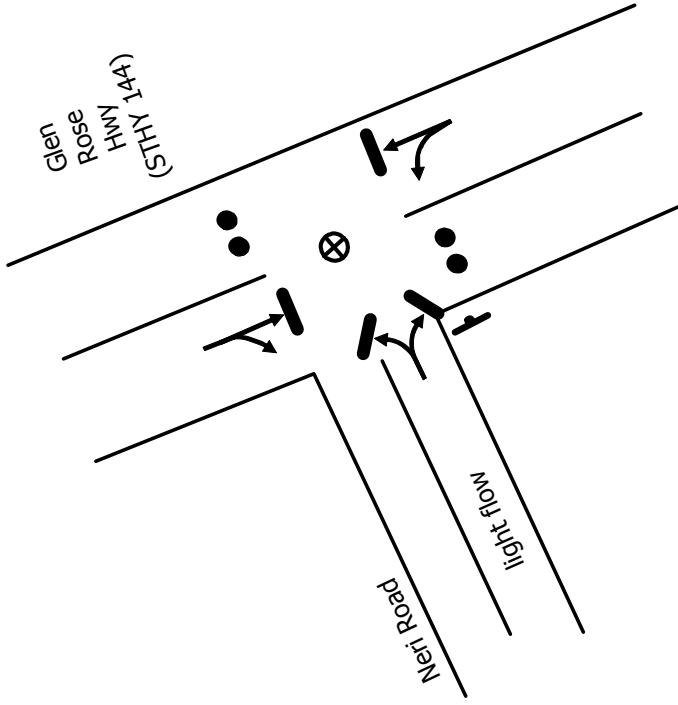
MUNICIPALITY: GRANBURY

LOCATION: GLEN ROSE HWY (STHY 144) & NERI RD

TCP ID: 22

ZONE: 1D

COUNTY: HOOD



****Traffic Guide should position himself safely.**

Key

- MOVEMENT FACILITATED
- MOVEMENT DISCOURAGED/DIVERTED
- ⊗ TRAFFIC GUIDE
- ⊘ STOP SIGN
- ⊗ TRAFFIC BARRICADE
- 2 PER LANE (LOCAL ROADS AND RAMPS)
- 4 PER LANE (FREEWAY AND RAMPS)
- TRAFFIC SIGNAL
- TRAFFIC CONES SPACED TO DISCOURAGE TRAFFIC BUT ALLOW PASSAGE (3 PER LANE):

DESCRIPTION

1. Discourage northbound movement along STHY 144. Re-route northbound traffic to FM 51 via Neri Rd.
2. Discourage southbound movement along STHY 144.

MANPOWER/EQUIPMENT

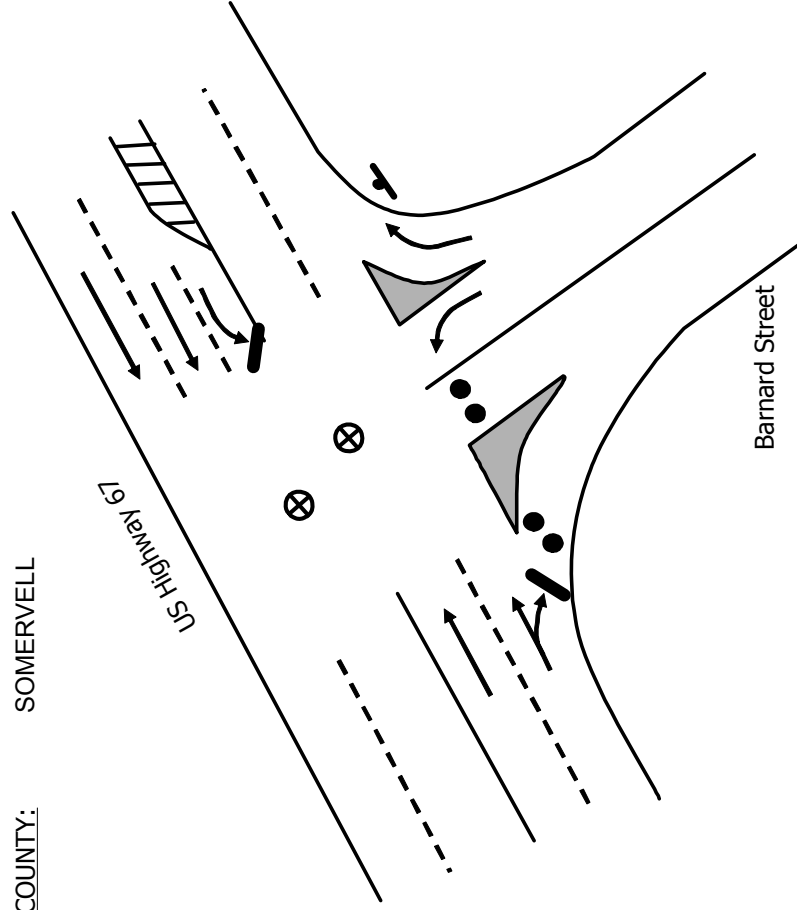
- 1 Traffic Guide(s)
- 6 Traffic Cones

LOCATION PRIORITY

1

TCP

MUNICIPALITY: GLEN ROSE
LOCATION: BARNARD ST & US HWY 67
TCP ID: 23
ZONE: GLEN ROSE
COUNTY: SOMERVELL



****Traffic Guide should position himself safely.**

Key

- MOVEMENT FACILITATED
- MOVEMENT DISCOURAGED/DIVERTED
- ⊗ TRAFFIC GUIDE
- ⊘ STOP SIGN
- ⊗ TRAFFIC BARRICADE
- 2 PER LANE (LOCAL ROADS AND RAMPS)
- 4 PER LANE (FREEWAY AND RAMPS)
- TRAFFIC SIGNAL
- TRAFFIC CONES SPACED TO DISCOURAGE TRAFFIC BUT ALLOW PASSAGE (3 PER LANE):

2 ft
3 ft
8 ft

DESCRIPTION

1. Discourage southbound movement along Barnard St.

MANPOWER/EQUIPMENT

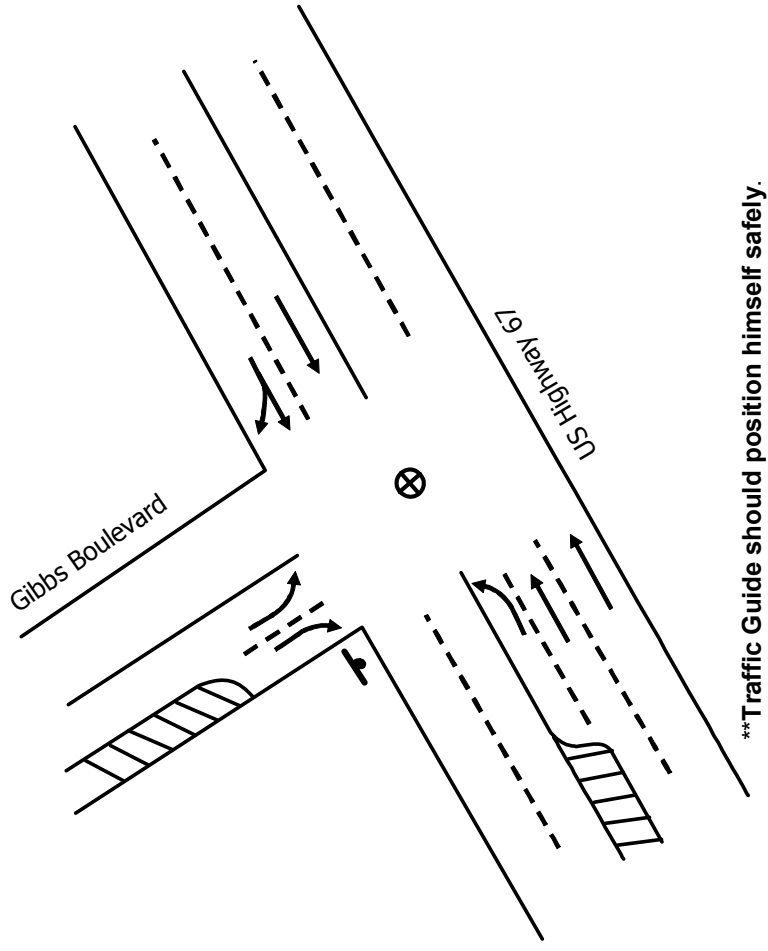
- 2 Traffic Guide(s)
- 6 Traffic Cones

LOCATION PRIORITY

- 2

TCP

MUNICIPALITY: GLEN ROSE
LOCATION: GIBBS BLVD & US HWY 67
TCP ID: 24
ZONE: GLEN ROSE
COUNTY: SOMERVELL



****Traffic Guide should position himself safely.**

- Key
- MOVEMENT FACILITATED
 - MOVEMENT DISCOURAGED/DIVERTED
 - ⊗ TRAFFIC GUIDE
 - ⊘ STOP SIGN
 - ⊗ TRAFFIC BARRICADE
 - 2 PER LANE (LOCAL ROADS AND RAMPS)
 - 4 PER LANE (FREEWAY AND RAMPS)
 - TRAFFIC SIGNAL
 - TRAFFIC CONES SPACED TO DISCOURAGE TRAFFIC BUT ALLOW PASSAGE (3 PER LANE):
 - ● ● 8 ft

DESCRIPTION

1. Facilitate the flow of traffic out of the amphitheatre.

MANPOWER/EQUIPMENT

- 1 Traffic Guide(s)

LOCATION PRIORITY

- 1 (if there is an event at amphitheatre)
- 3 (Otherwise)

TCP

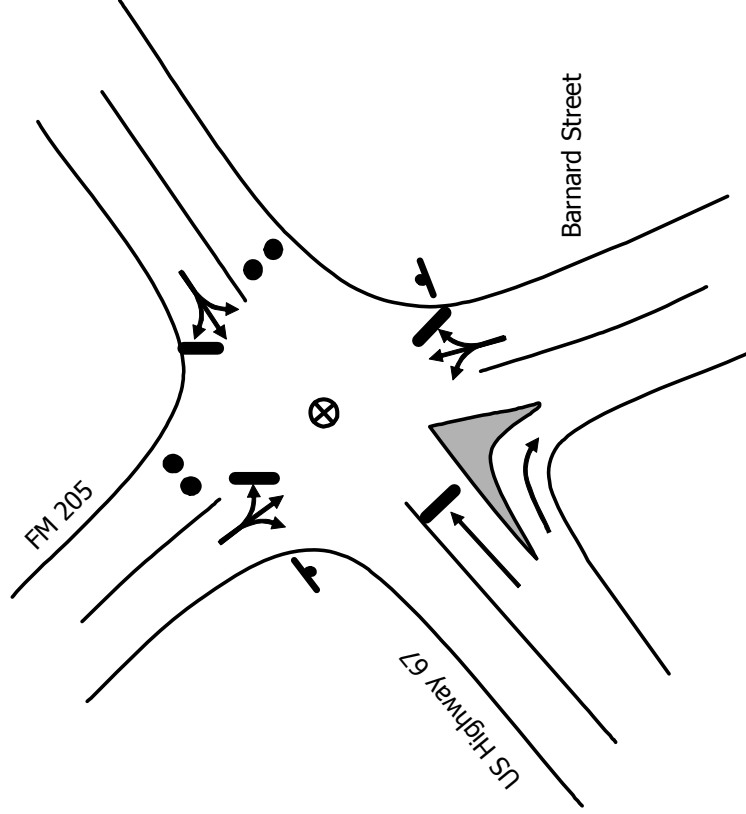
MUNICIPALITY: GLEN ROSE

LOCATION: US HWY 67 & BARNARD ST (FM 205)

TCP ID: 25

ZONE: GLEN ROSE

COUNTY: SOMERVELL



****Traffic Guide should position himself safely.**

Key

- MOVEMENT FACILITATED
- MOVEMENT DISCOURAGED/DIVERTED
- ⊗ TRAFFIC GUIDE
- ⊘ STOP SIGN
- ⊗ TRAFFIC BARRICADE
- 2 PER LANE (LOCAL ROADS AND RAMPS)
- 4 PER LANE (FREEWAY AND RAMPS)
- TRAFFIC SIGNAL
- TRAFFIC CONES SPACED TO DISCOURAGE TRAFFIC BUT ALLOW PASSAGE (3 PER LANE):

2 ft
3 ft
8 ft

DESCRIPTION

1. Discourage eastbound movement along US Hwy 67
2. Discourage northbound movement along FM 205

MANPOWER/EQUIPMENT

- 1 Traffic Guide(s)
- 6 Traffic Cones

LOCATION PRIORITY

2

TCP

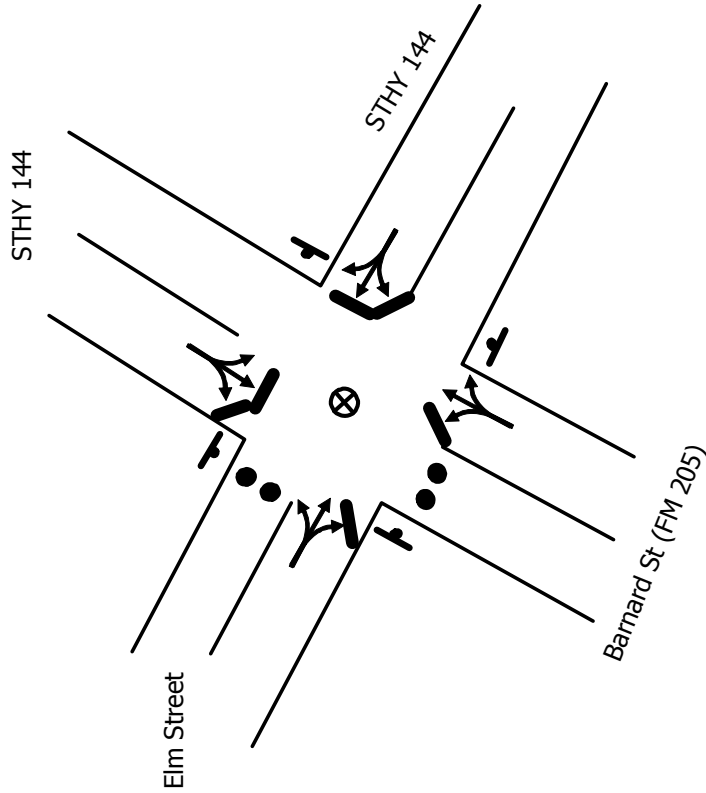
MUNICIPALITY: GLEN ROSE

LOCATION: STHY 144 & FM 56 & FM 205

TCP ID: 26

ZONE: GLEN ROSE

COUNTY: SOMERVELL



****Traffic Guide should position himself safely.**

- Key
- MOVEMENT FACILITATED
 - MOVEMENT DISCOURAGED/DIVERTED
 - ⊗ TRAFFIC GUIDE
 - ⊙ STOP SIGN
 - ⊗ TRAFFIC BARRICADE
 - 2 PER LANE (LOCAL ROADS AND RAMPS)
 - 4 PER LANE (FREEWAY AND RAMPS)
 - TRAFFIC SIGNAL
 - TRAFFIC CONES SPACED TO DISCOURAGE TRAFFIC BUT ALLOW PASSAGE (3 PER LANE):
 - ● ● 8 ft

DESCRIPTION

1. Discourage westbound movement on Elm St.
2. Discourage westbound movement on FM 205

MANPOWER/EQUIPMENT

- 1 Traffic Guide(s)
- 6 Traffic Cones

LOCATION PRIORITY

2

TCP

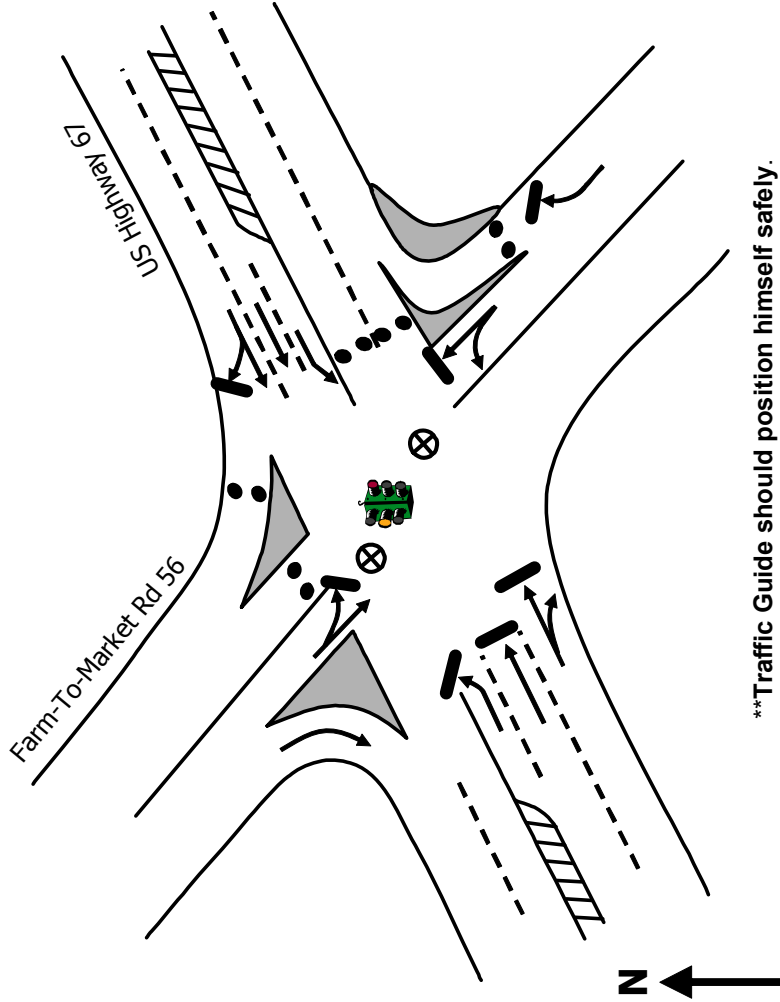
MUNICIPALITY: GLEN ROSE

LOCATION: US HWY 67 & FM 56

TCP ID: 27

ZONE: GLEN ROSE

COUNTY: SOMERVELL



****Traffic Guide should position himself safely.**

Key

- MOVEMENT FACILITATED
- MOVEMENT DISCOURAGED/DIVERTED
- ⊗ TRAFFIC GUIDE
- ⊘ STOP SIGN
- ⊗ TRAFFIC BARRICADE
- 2 PER LANE (LOCAL ROADS AND RAMPS)
- 4 PER LANE (FREEWAY AND RAMPS)
- TRAFFIC SIGNAL
- TRAFFIC CONES SPACED TO DISCOURAGE TRAFFIC BUT ALLOW PASSAGE (3 PER LANE):
- ● ● 8 ft

DESCRIPTION

1. Discourage northbound movement along FM 56.
2. Discourage eastbound movement along US Hwy 67.

MANPOWER/EQUIPMENT

- 2 Traffic Guide(s)
- 15 Traffic Cones

LOCATION PRIORITY

2

TCP

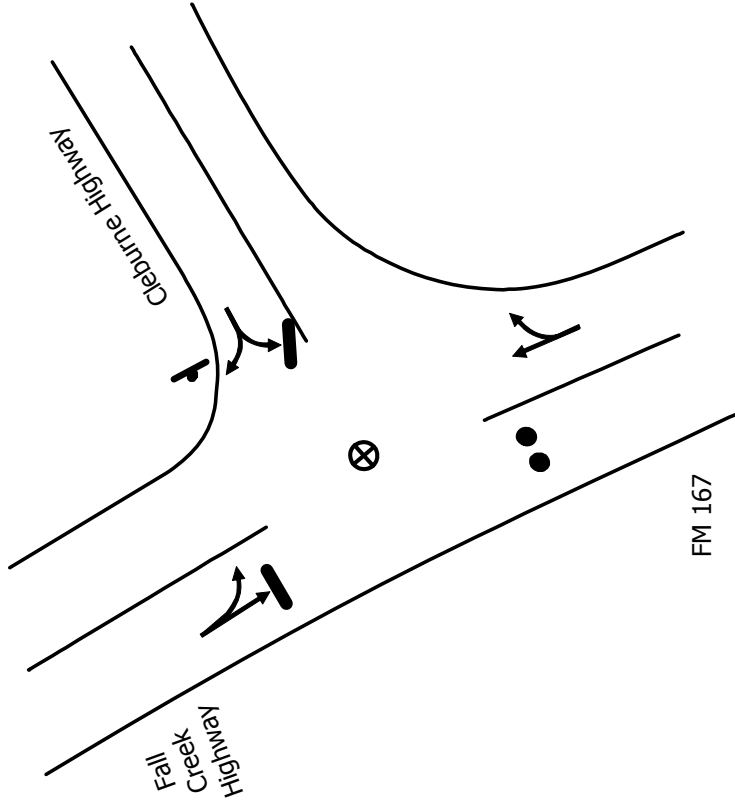
MUNICIPALITY: GRANBURY

LOCATION: CLEBURNE HWY & FALL CREEK HWY & FM 167

TCP ID: 28

ZONE: SHADOW

COUNTY: HOOD



****Traffic Guide should position himself safely.**

Key

- MOVEMENT FACILITATED
- MOVEMENT DISCOURAGED/DIVERTED
- ⊗ TRAFFIC GUIDE
- ⊙ STOP SIGN
- ⊗ TRAFFIC BARRICADE
- 2 PER LANE (LOCAL ROADS AND RAMPS)
- 4 PER LANE (FREEWAY AND RAMPS)
- TRAFFIC SIGNAL
- TRAFFIC CONES SPACED TO DISCOURAGE TRAFFIC BUT ALLOW PASSAGE (3 PER LANE):

2 ft

3 ft

8 ft

DESCRIPTION

1. Discourage southbound movement along FM 167.

MANPOWER/EQUIPMENT

- 1 Traffic Guide(s)
- 3 Traffic Cones

LOCATION PRIORITY

- 2

TCP

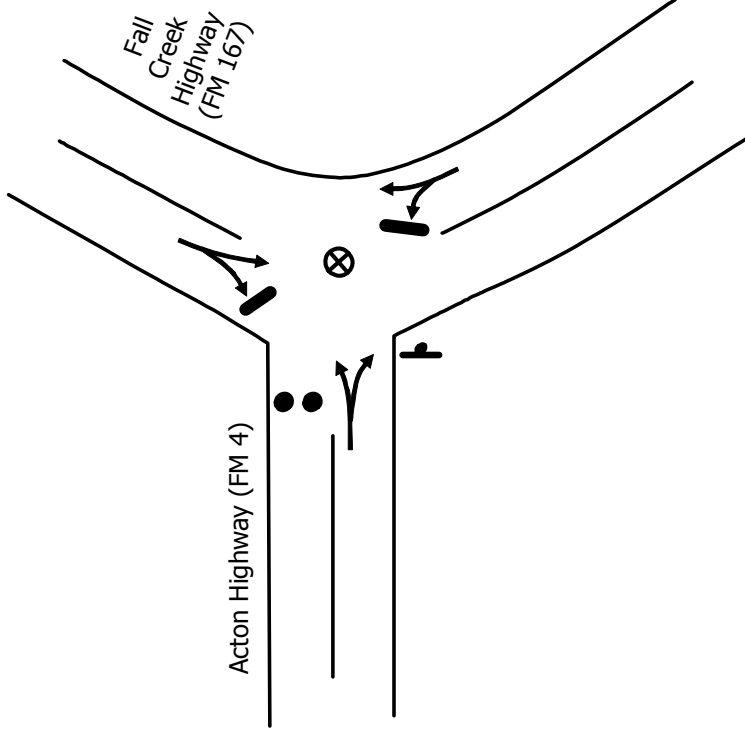
MUNICIPALITY: GRANBURY

LOCATION: FALL CREEK HWY (FM 167) & ACTON HWY

TCP ID: 29

ZONE: SHADOW

COUNTY: HOOD



Key

- MOVEMENT FACILITATED
- MOVEMENT DISCOURAGED/DIVERTED
- ⊗ TRAFFIC GUIDE
- ⊘ STOP SIGN
- ⊗ TRAFFIC BARRICADE
- 2 PER LANE (LOCAL ROADS AND RAMPS)
- 4 PER LANE (FREEWAY AND RAMPS)
- TRAFFIC SIGNAL
- TRAFFIC CONES SPACED TO DISCOURAGE TRAFFIC BUT ALLOW PASSAGE (3 PER LANE):
- ● ● 8 ft

DESCRIPTION

1. Discourage westbound movement along FM 4.

MANPOWER/EQUIPMENT

- 1 Traffic Guide(s)
- 3 Traffic Cones

LOCATION PRIORITY

- 1

****Traffic Guide should position himself safely.**

TCP

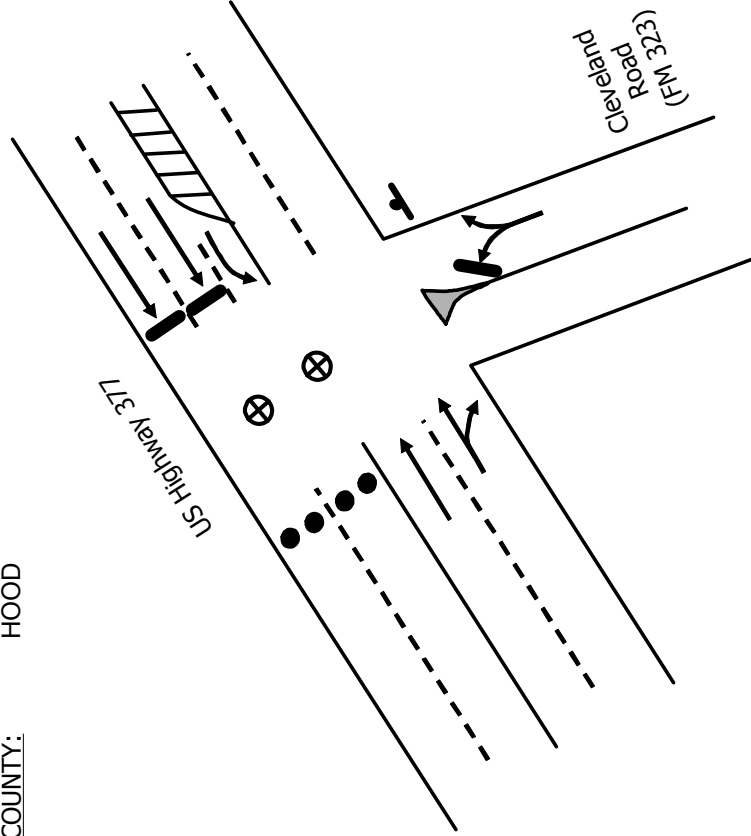
MUNICIPALITY: GRANBURY

LOCATION: US HWY 377 & CLEVELAND RD (FM 323)

TCP ID: 30

ZONE: SHADOW

COUNTY: HOOD



****Traffic Guide should position himself safely.**

Key

- MOVEMENT FACILITATED
- MOVEMENT DISCOURAGED/DIVERTED
- ⊗ TRAFFIC GUIDE
- ⊘ STOP SIGN
- ⊗ TRAFFIC BARRICADE
- 2 PER LANE (LOCAL ROADS AND RAMPS)
- 4 PER LANE (FREEWAY AND RAMPS)
- TRAFFIC SIGNAL
- TRAFFIC CONES SPACED TO DISCOURAGE TRAFFIC BUT ALLOW PASSAGE (3 PER LANE):
- ● ● 8 ft

DESCRIPTION

1. Discourage westbound movement along US Hwy 377.

MANPOWER/EQUIPMENT

- 2 Traffic Guide(s)
- 6 Traffic Cones

LOCATION PRIORITY

- 2

TCP

MUNICIPALITY: GRANBURY

LOCATION: CLEVELAND RD (FM 323) & ACTON HWY (FM 4)

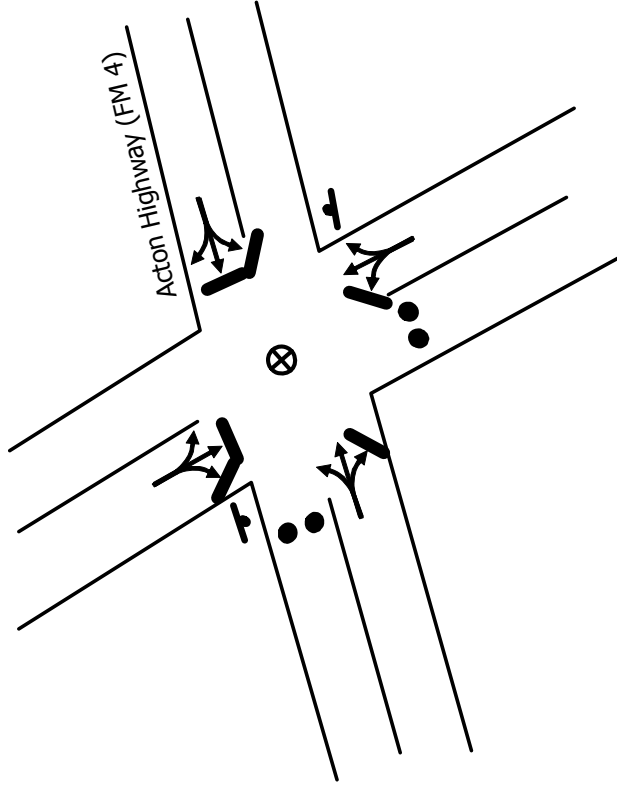
TCP ID: 31

ZONE: SHADOW

COUNTY: HOOD

Cleveland Rd
(FM 323)

Acton Highway (FM 4)



****Traffic Guide should position himself safely.**

Key

- MOVEMENT FACILITATED
- MOVEMENT DISCOURAGED/DIVERTED
- ⊗ TRAFFIC GUIDE
- ⊘ STOP SIGN
- ⊗ TRAFFIC BARRICADE
- 2 PER LANE (LOCAL ROADS AND RAMP)
- 4 PER LANE (FREEWAY AND RAMP)
- TRAFFIC SIGNAL
- TRAFFIC CONES SPACED TO DISCOURAGE TRAFFIC BUT ALLOW PASSAGE (3 PER LANE):

2 ft

3 ft

8 ft

DESCRIPTION

1. Discourage westbound movement along FM 4.
2. Discourage southbound movement along FM 323.

MANPOWER/EQUIPMENT

1. Traffic Guide(s)
6. Traffic Cones

LOCATION PRIORITY

- 2

TCP

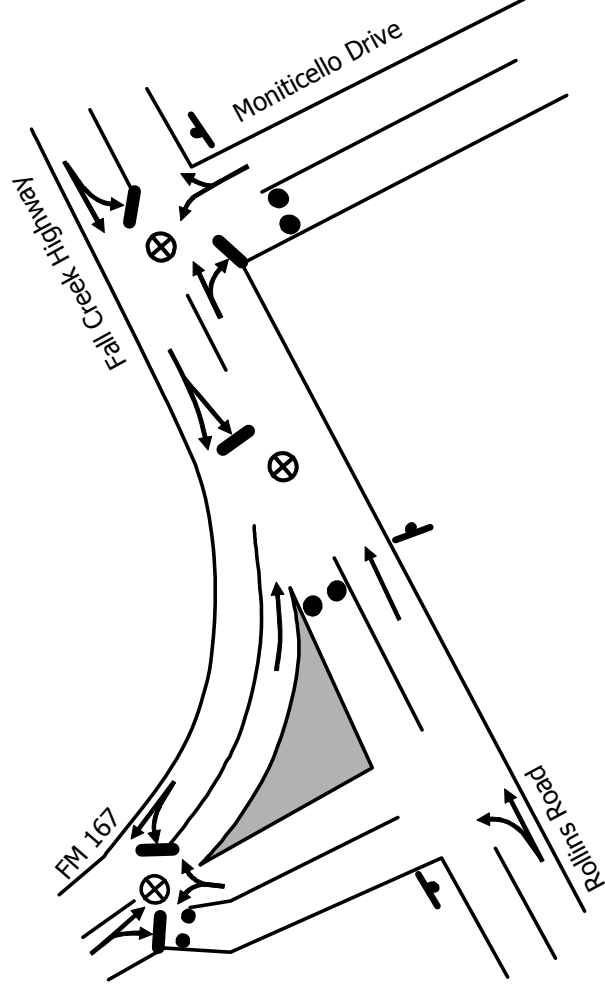
MUNICIPALITY: GRANBURY

LOCATION: FALL CREEK HWY & MONTICELLO DR & ROLLINS RD

TCP ID: 32

ZONE: 1C

COUNTY: HOOD



Key

- MOVEMENT FACILITATED
- MOVEMENT DISCOURAGED/DIVERTED
- ⊗ TRAFFIC GUIDE
- ⊘ STOP SIGN
- ⊗ TRAFFIC BARRICADE
- 2 PER LANE (LOCAL ROADS AND RAMPS)
- 4 PER LANE (FREEWAY AND RAMPS)
- TRAFFIC SIGNAL
- TRAFFIC CONES SPACED TO DISCOURAGE TRAFFIC BUT ALLOW PASSAGE (3 PER LANE):

DESCRIPTION

1. Discourage westbound movement along Rollins Rd.
2. Discourage southbound movement along Monticello Dr.
3. Facilitate the flow of traffic on FM 167.

MANPOWER/EQUIPMENT

- 3 Traffic Guides
- 9 Traffic Cones

LOCATION PRIORITY

3

****Traffic Guide should position himself safely.**

TCP

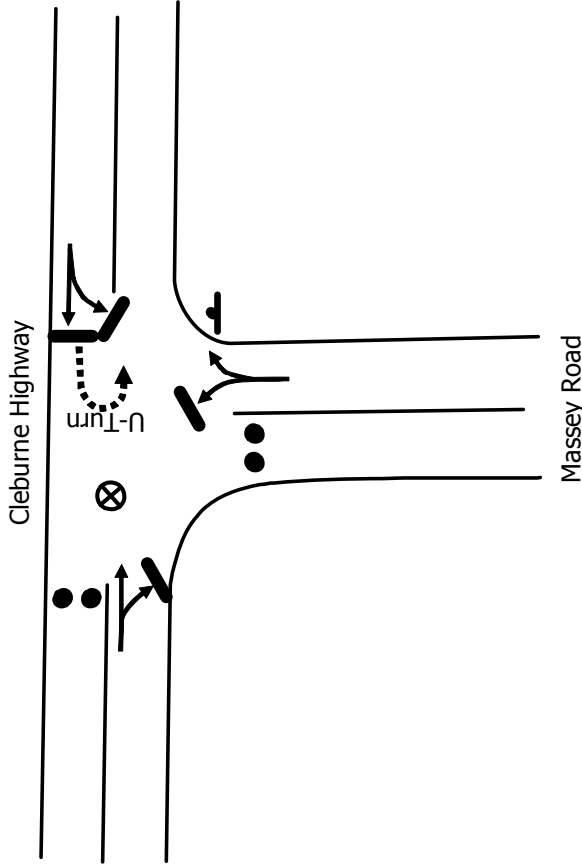
MUNICIPALITY: GRANBURY

LOCATION: CLEBURNE HWY & MASSEY RD

TCP ID: 33

ZONE: SHADOW

COUNTY: HOOD



Key

- MOVEMENT FACILITATED
- MOVEMENT DISCOURAGED/DIVERTED
- ⊗ TRAFFIC GUIDE
- ⊘ STOP SIGN
- ⊗ TRAFFIC BARRICADE
- 2 PER LANE (LOCAL ROADS AND RAMPS)
- 4 PER LANE (FREEWAY AND RAMPS)
- TRAFFIC SIGNAL
- TRAFFIC CONES SPACED TO DISCOURAGE TRAFFIC BUT ALLOW PASSAGE (3 PER LANE):

2 ft
3 ft
8 ft

DESCRIPTION

1. Discourage westbound movement along Cleburne Hwy.
2. Discourage southbound movement along Massey Rd.

MANPOWER/EQUIPMENT

- 1 Traffic Guide(s)
- 6 Traffic Cones

LOCATION PRIORITY

2

****Traffic Guide should position himself safely.**

TCP

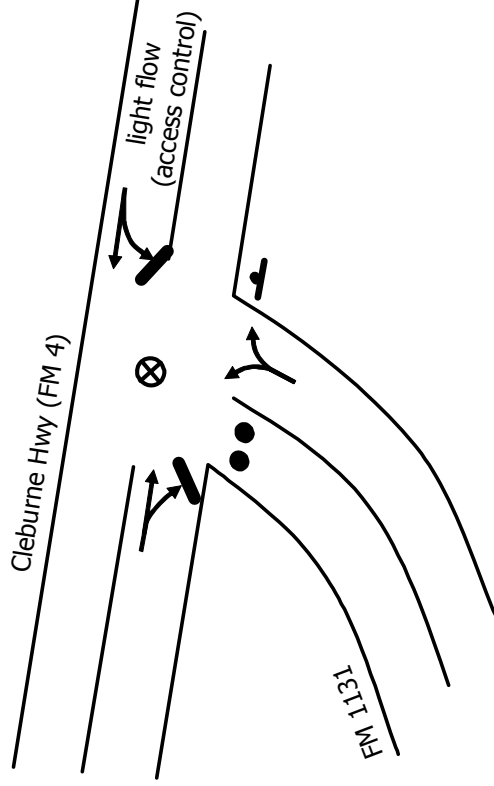
MUNICIPALITY: GODLEY

LOCATION: CLEBURNE HWY (FM 4) & FM 1131

TCP ID: 34

ZONE: SHADOW

COUNTY: JOHNSON



****Traffic Guide should position himself safely.**

Key

- MOVEMENT FACILITATED
- MOVEMENT DISCOURAGED/DIVERTED
- ⊗ TRAFFIC GUIDE
- ⊘ STOP SIGN
- ⊗ TRAFFIC BARRICADE
- 2 PER LANE (LOCAL ROADS AND RAMPS)
- 4 PER LANE (FREEWAY AND RAMPS)
- TRAFFIC SIGNAL
- TRAFFIC CONES SPACED TO DISCOURAGE TRAFFIC BUT ALLOW PASSAGE (3 PER LANE):
- ● ● 8 ft

DESCRIPTION

1. Discourage westbound movement along FM 1131.
2. Facilitate the flow of traffic from FM 1131 onto FM 4

MANPOWER/EQUIPMENT

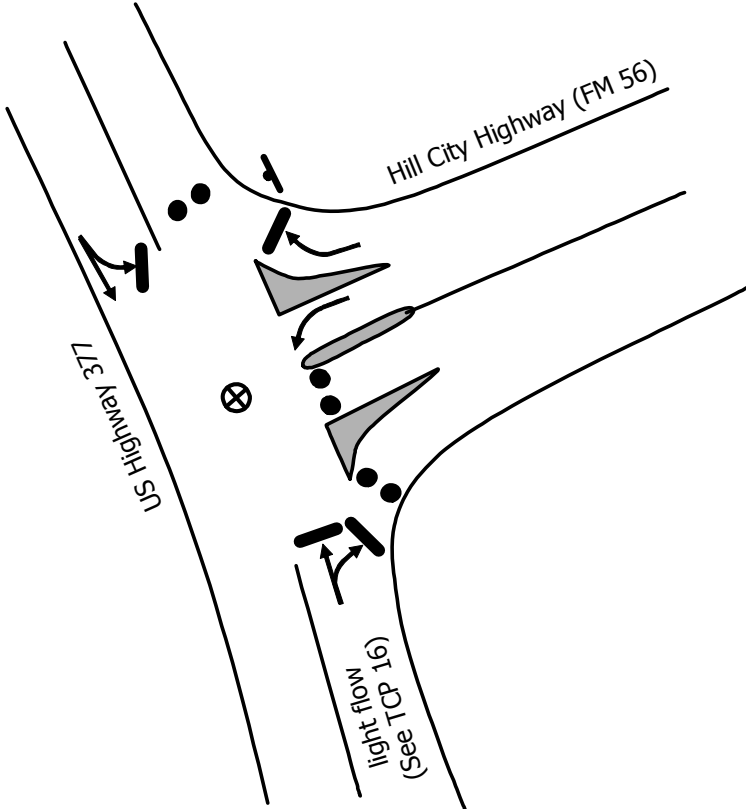
1. Traffic Guide(s)
3. Traffic Cones

LOCATION PRIORITY

- 2

TCP

MUNICIPALITY: TOLAR
LOCATION: US HWY 377 & HILL HWY (FM 56)
TCP ID: 35
ZONE: TOLAR
COUNTY: HOOD



****Traffic Guide should position himself safely.**

Key

- MOVEMENT FACILITATED
- MOVEMENT DISCOURAGED/DIVERTED
- ⊗ TRAFFIC GUIDE
- ⊘ STOP SIGN
- ⊗ TRAFFIC BARRICADE
- 2 PER LANE (LOCAL ROADS AND RAMPS)
- 4 PER LANE (FREEWAY AND RAMPS)
- TRAFFIC SIGNAL
- TRAFFIC CONES SPACED TO DISCOURAGE TRAFFIC BUT ALLOW PASSAGE (3 PER LANE):

2 ft
3 ft
8 ft

DESCRIPTION

1. Discourage eastbound movement along US 377.
2. Discourage southbound movement along FM 56
3. Facilitate westbound movement along US 377

MANPOWER/EQUIPMENT

- 1 Traffic Guide(s)
- 9 Traffic Cones

LOCATION PRIORITY

1

TCP

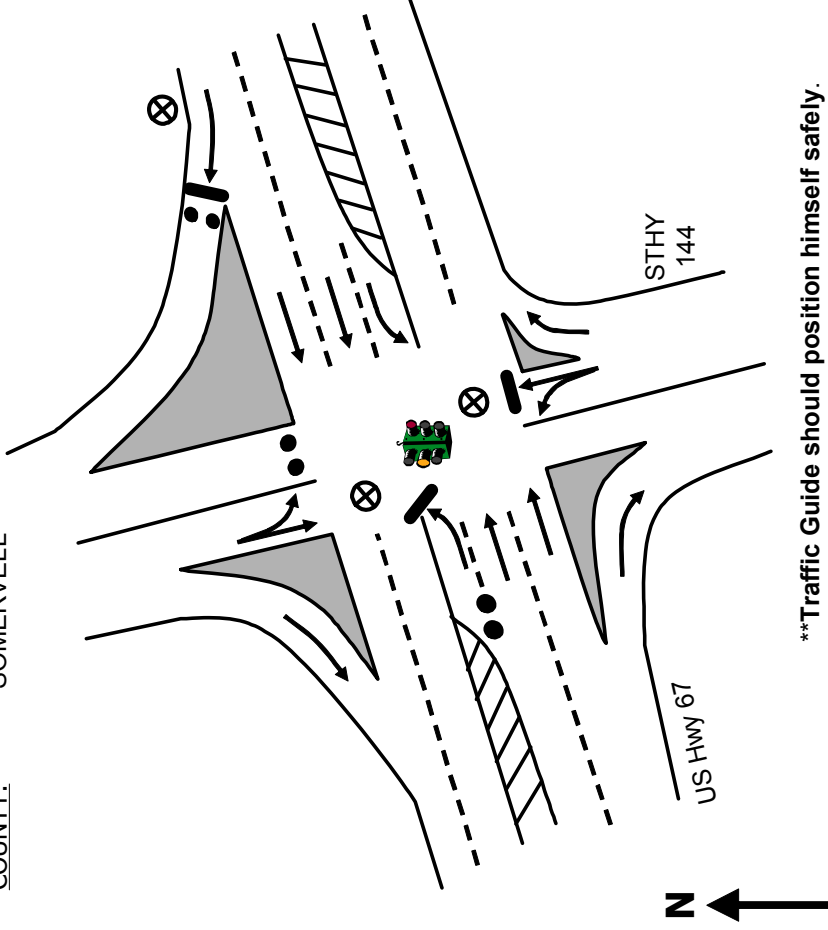
MUNICIPALITY: GLEN ROSE

LOCATION: US HWY 67 & STATE HWY 144

TCP ID: 36

ZONE: GLEN ROSE

COUNTY: SOMERVELL



****Traffic Guide should position himself safely.**

Key

- MOVEMENT FACILITATED
- MOVEMENT DISCOURAGED/DIVERTED
- ⊗ TRAFFIC GUIDE
- ⊘ STOP SIGN
- ⊗ TRAFFIC BARRICADE
- 2 PER LANE (LOCAL ROADS AND RAMPS)
- 4 PER LANE (FREEWAY AND RAMPS)
- TRAFFIC SIGNAL
- TRAFFIC CONES SPACED TO DISCOURAGE TRAFFIC BUT ALLOW PASSAGE (3 PER LANE):
- ● ● 8 ft

DESCRIPTION

1. Discourage northbound movement along STHY 144.

MANPOWER/EQUIPMENT

- 3 Traffic Guide(s)
- 9 Traffic Cones

LOCATION PRIORITY

- 1

TCP

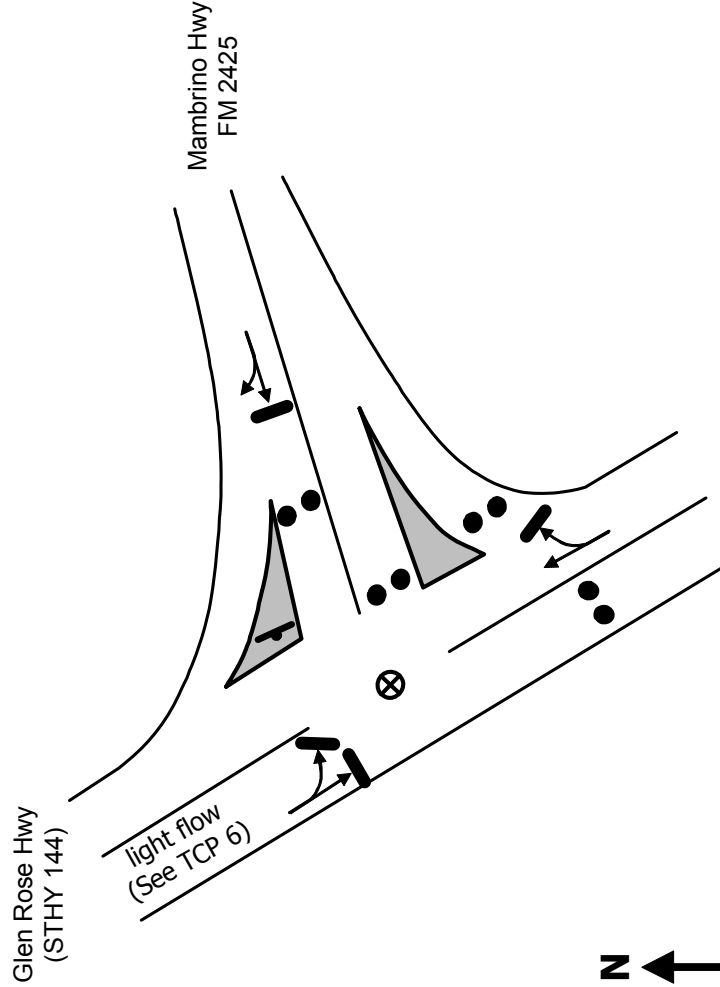
MUNICIPALITY: GRANBURY

LOCATION: GLEN ROSE HWY (STHY 144) & MAMBRINO HWY

TCP ID: 37

ZONE: 1B

COUNTY: HOOD



Key

- MOVEMENT FACILITATED
- MOVEMENT DISCOURAGED/DIVERTED
- ⊗ TRAFFIC GUIDE
- ⊘ STOP SIGN
- ⊗ TRAFFIC BARRICADE
- 2 PER LANE (LOCAL ROADS AND RAMPS)
- 4 PER LANE (FREEWAY AND RAMPS)
- TRAFFIC SIGNAL
- TRAFFIC CONES SPACED TO DISCOURAGE TRAFFIC BUT ALLOW PASSAGE (3 PER LANE):

2 ft
3 ft
8 ft

DESCRIPTION

1. Discourage southbound movement along STHY 144.
2. Discourage eastbound movement along FM2425.
3. Facilitate northbound movement along STHY 144.

MANPOWER/EQUIPMENT

1. Traffic Guide(s)
- 12 Traffic Cones

LOCATION PRIORITY

2

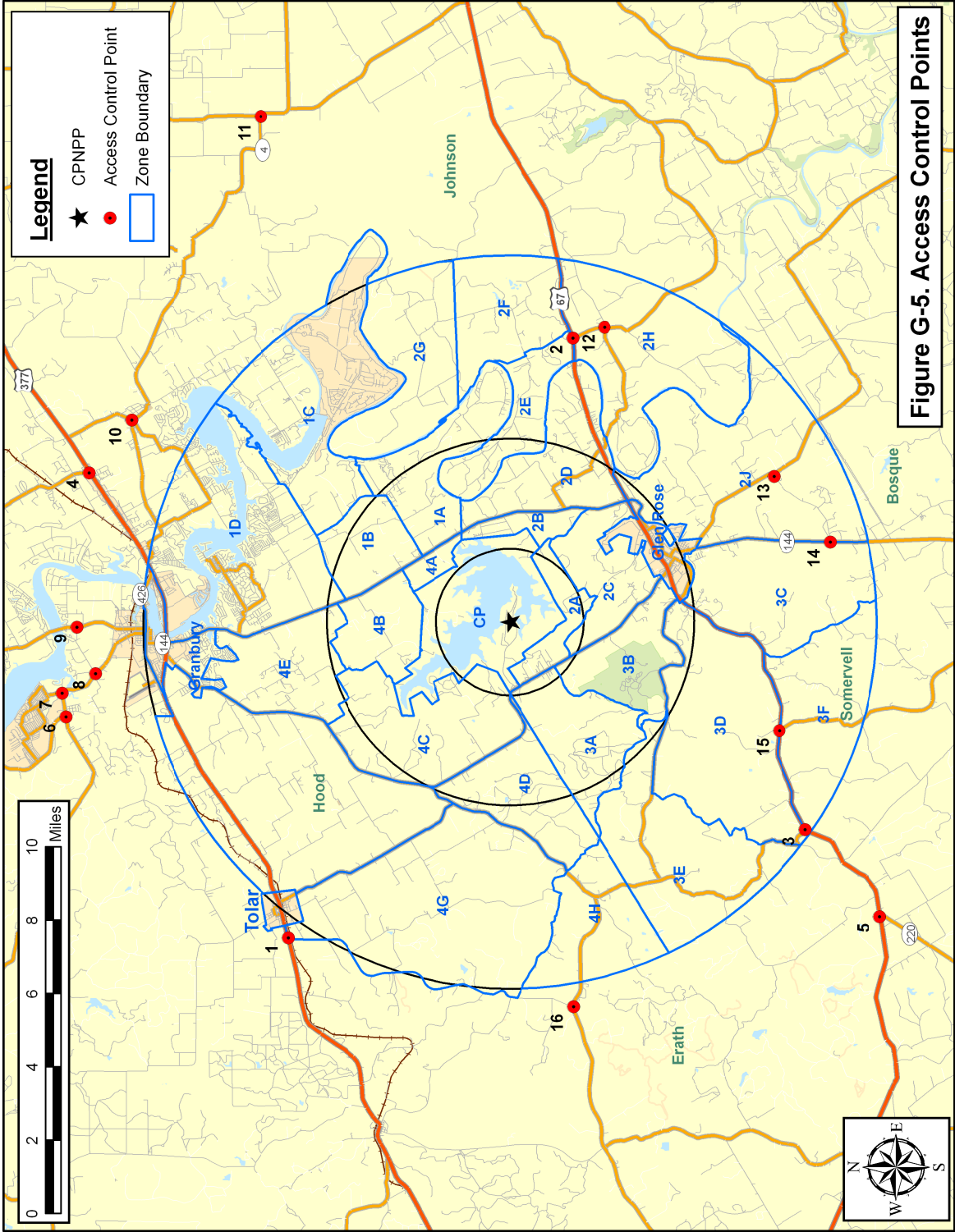


Table G-2. Comanche Peak Access Control Point Summary						
Hood County Access Control Points						
ZONE	ACP ID	Location	Municipality	Priority	No. of Guides	No. of Barricades
4G	1	US Hwy 377 & Rock Church Hwy (FM 2870)	Tolar	1	1	2
Shadow	4	US Hwy 377 & Temple Hall Hwy (FM 167)	Granbury	1	2	8
Shadow	6	Lipan Hwy (FM 4) & Tin Top Hwy (FM 2580)	Thorp Spring	1	1	2
Shadow	8	Lipan Hwy (FM 4) & Avery Rd	Granbury	1	2	4
Shadow	9	Weatherford Hwy (FM 51) & Avery Rd	Granbury	1	2	2
Shadow	10	Acton Hwy (FM 4) & Fall Creek Hwy (FM 167)	Granbury	1	1	2
Shadow	7	Lipan Hwy (FM 4) & Oak Trail Dr	Thorp Spring	2	1	2
Hood County Total Manpower/Equipment Needed:					10	22
Somervell County Access Control Points						
2H	2	US Hwy 67 & FM 199	Nemo	2	1	2
3D	3	US Hwy 67 & FM 51	Chalk Mountain	2	1	4
2J	14	State Hwy 144 & FM 202	Glen Rose	2	1	2
3F	15	US Hwy 67 & FM 203	Glass	2	1	2
2H	12	FM 199 & FM 200	Nemo	3	1	2
2J	13	FM 202 & FM 56	Glen Rose	3	1	2
Somervell County Total Manpower/Equipment Needed:					6	14
Erath County Access Control Points						
Shadow	5	US Hwy 67 & State Hwy 220	Chalk Mountain	2	2	4
Shadow	16	FM 205 & FM 2870	Stephenville	3	1	2
Erath County Total Manpower/Equipment Needed:					3	6
Johnson County Access Control Points						
Shadow	11	FM 4 & FM 2331	Godley	2	1	4
Johnson County Total Manpower/Equipment Needed:					1	4
EPZ Total Manpower/Equipment Needed:					20	46

ACP

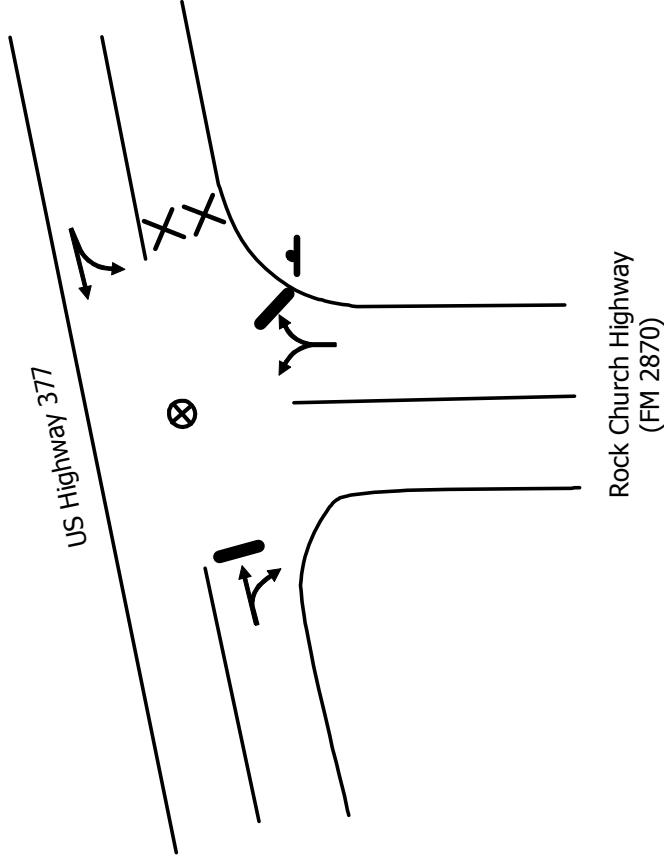
MUNICIPALITY: TOLAR

LOCATION: US HWY 377 & ROCK CHURCH HWY (FM 2870)

ACP ID: 1

ZONE: 4G

COUNTY: HOOD



****Traffic Guide should position himself safely.**

Key

- MOVEMENT FACILITATED
- MOVEMENT DISCOURAGED/DIVERTED
- ⊗ TRAFFIC GUIDE
- ⊘ STOP SIGN
- ⊗ TRAFFIC BARRICADE
- 2 PER LANE (LOCAL ROADS AND RAMPS)
- 4 PER LANE (FREEWAY AND RAMPS)
- TRAFFIC SIGNAL
- TRAFFIC CONES SPACED TO DISCOURAGE TRAFFIC BUT ALLOW PASSAGE (3 PER LANE):
- ● ● 8 ft

DESCRIPTION

1. Interdict and Divert eastbound movement along US Highway 377.

MANPOWER/EQUIPMENT

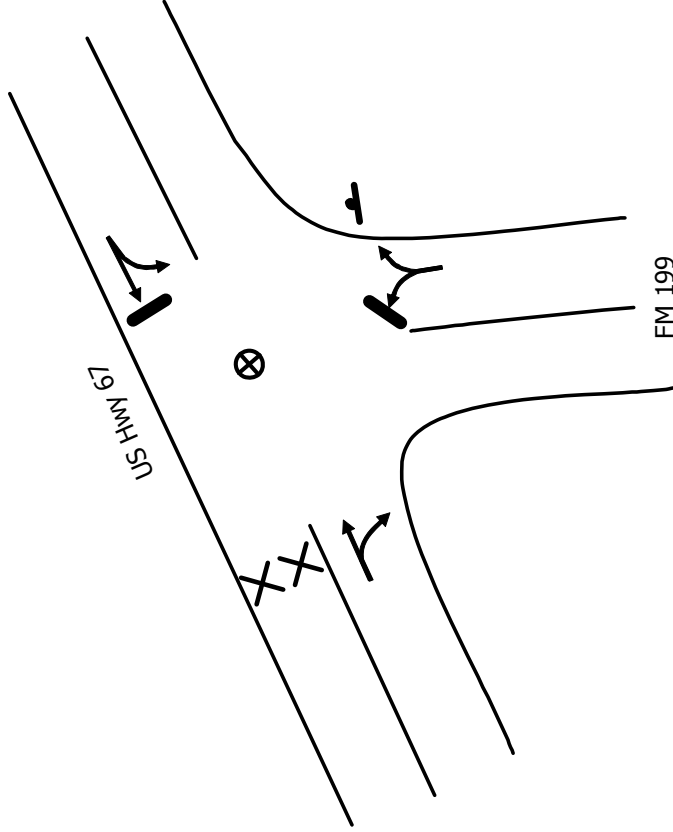
- 1 Traffic Guide(s)
- 2 Traffic Barricades

LOCATION PRIORITY

- 1

ACP

MUNICIPALITY: NEMO
LOCATION: US HWY 67 & FM 199
ACP ID: 2
ZONE: 2H
COUNTY: SOMERVELL



****Traffic Guide should position himself safely.**

Key

- MOVEMENT FACILITATED
- MOVEMENT DISCOURAGED/DIVERTED
- ⊗ TRAFFIC GUIDE
- ⊘ STOP SIGN
- ⊗ TRAFFIC BARRICADE
- 2 PER LANE (LOCAL ROADS AND RAMPS)
- 4 PER LANE (FREEWAY AND RAMPS)
- TRAFFIC SIGNAL
- TRAFFIC CONES SPACED TO DISCOURAGE TRAFFIC BUT ALLOW PASSAGE (3 PER LANE):

2 ft
3 ft
8 ft

DESCRIPTION

1. Interdict and Divert westbound movement along US Hwy 67.

MANPOWER/EQUIPMENT

- 1 Traffic Guide(s)
- 2 Traffic Barricades

LOCATION PRIORITY

- 2

ACP

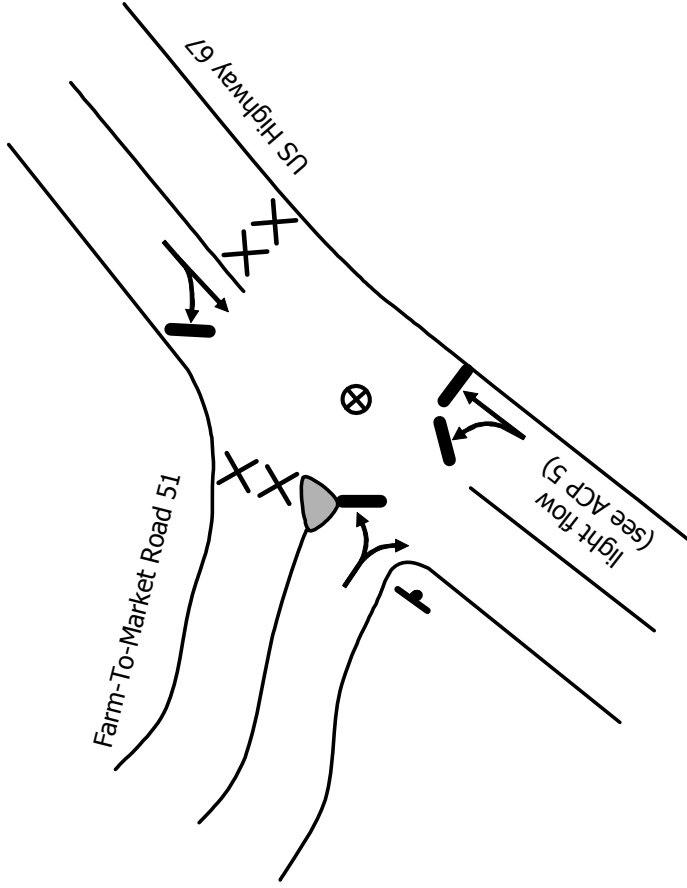
MUNICIPALITY: CHALK MOUNTAIN

LOCATION: US HWY 67 & FM 51

ACP ID: 3

ZONE: 3D

COUNTY: SOMERVELL



****Traffic Guide should position himself safely.**

Key

- MOVEMENT FACILITATED
- MOVEMENT DISCOURAGED/DIVERTED
- ⊗ TRAFFIC GUIDE
- ⊘ STOP SIGN
- ⊗ TRAFFIC BARRICADE
- 2 PER LANE (LOCAL ROADS AND RAMPS)
- 4 PER LANE (FREEWAY AND RAMPS)
- TRAFFIC SIGNAL
- TRAFFIC CONES SPACED TO DISCOURAGE TRAFFIC BUT ALLOW PASSAGE (3 PER LANE):
- ● ● 8 ft

DESCRIPTION

1. Interdict and Divert eastbound movement along US Hwy 67.
2. Interdict and Divert northbound movement along FM 51.

MANPOWER/EQUIPMENT

- 1 Traffic Guide(s)
- 4 Traffic Barricades

LOCATION PRIORITY

- 2

ACP

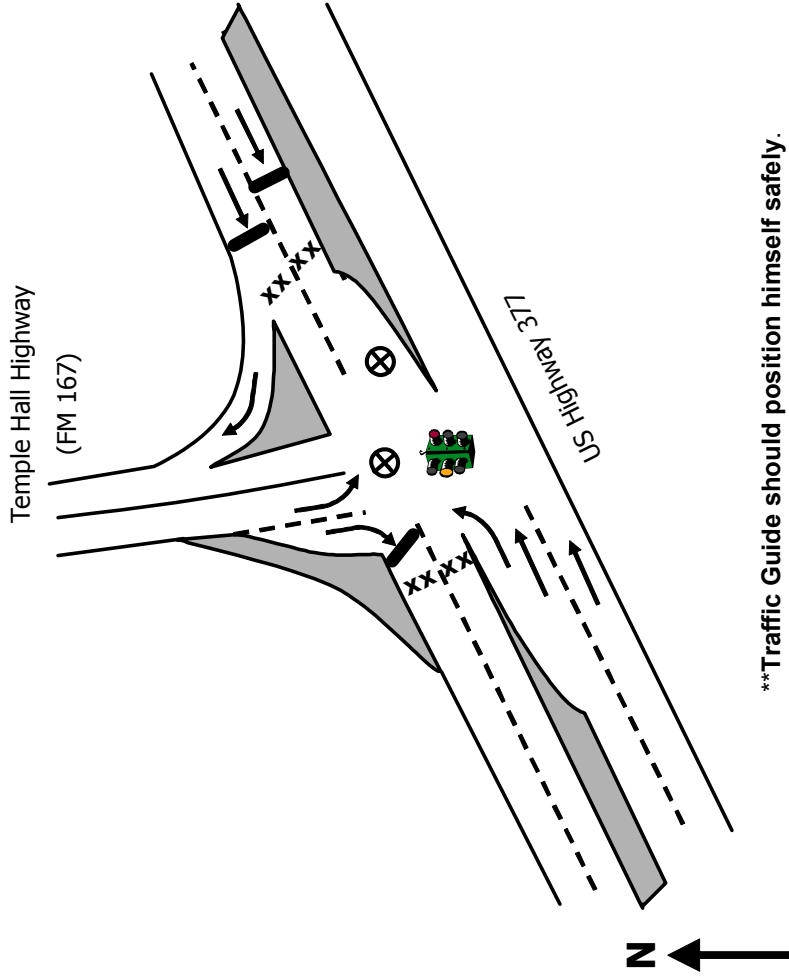
MUNICIPALITY: GRANBURY

LOCATION: US HWY 377 & TEMPLE HALL HWY (FM 167)

ACP ID: 4

ZONE: SHADOW

COUNTY: HOOD



****Traffic Guide should position himself safely.**

Key

- MOVEMENT FACILITATED
- MOVEMENT DISCOURAGED/DIVERTED
- ⊗ TRAFFIC GUIDE
- ⊘ STOP SIGN
- ⊗ TRAFFIC BARRICADE
- 2 PER LANE (LOCAL ROADS AND RAMPS)
- 4 PER LANE (FREEWAY AND RAMPS)
- TRAFFIC SIGNAL
- TRAFFIC CONES SPACED TO DISCOURAGE TRAFFIC BUT ALLOW PASSAGE (3 PER LANE):
- ● ● 8 ft

DESCRIPTION

1. Interdict and Divert westbound movement along US Hwy 377.

MANPOWER/EQUIPMENT

- 2 Traffic Guide(s)
- 8 Traffic Barricades

LOCATION PRIORITY

- 1

ACP

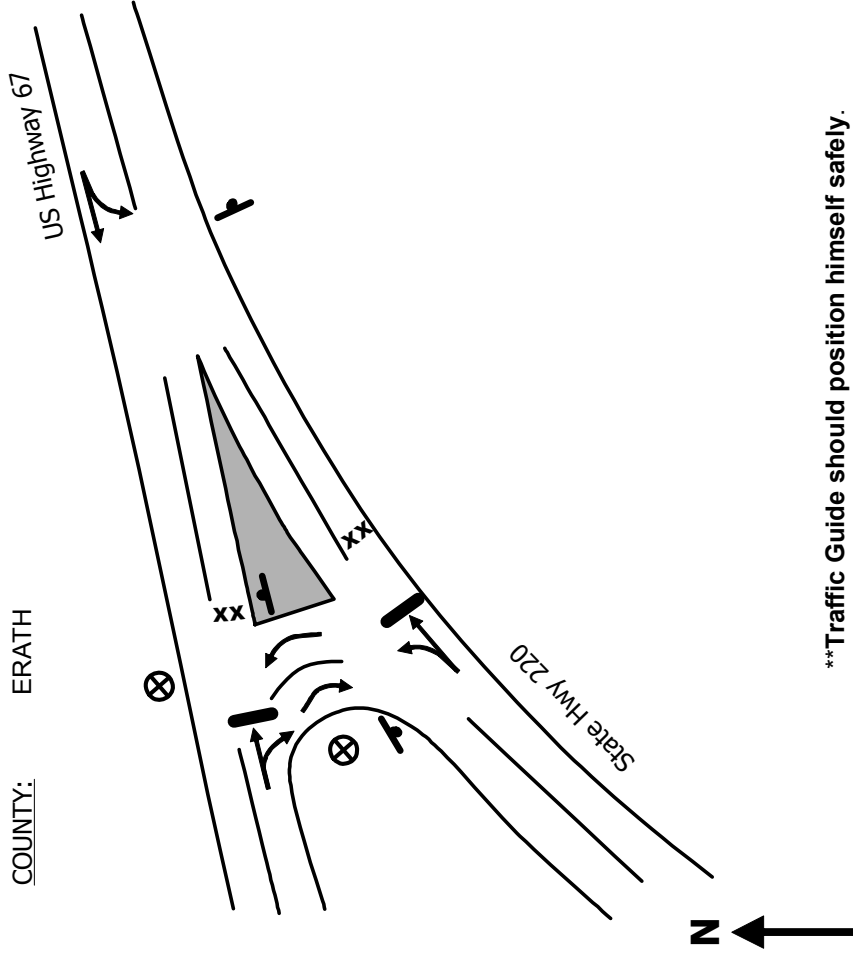
MUNICIPALITY: CHALK MOUNTAIN

LOCATION: US HWY 67 & STATE HWY 220

ACP ID: 5

ZONE: SHADOW

COUNTY: ERATH



****Traffic Guide should position himself safely.**

- Key
- MOVEMENT FACILITATED
 - MOVEMENT DISCOURAGED/DIVERTED
 - ⊗ TRAFFIC GUIDE
 - ⊘ STOP SIGN
 - ⊗ TRAFFIC BARRICADE
 - 2 PER LANE (LOCAL ROADS AND RAMPS)
 - 4 PER LANE (FREEWAY AND RAMPS)
 - TRAFFIC SIGNAL
 - TRAFFIC CONES SPACED TO DISCOURAGE TRAFFIC BUT ALLOW PASSAGE (3 PER LANE):
 - ● ● 8 ft

DESCRIPTION

1. Interdict and Divert eastbound movement along US Hwy 67.

MANPOWER/EQUIPMENT

- 2 Traffic Guide(s)
- 4 Traffic Barricades

LOCATION PRIORITY

- 2

ACP

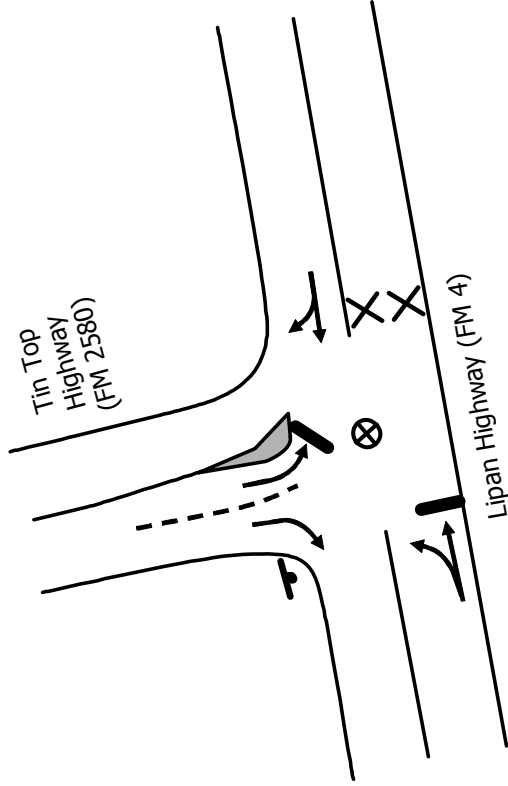
MUNICIPALITY: THORP SPRING

LOCATION: LIPAN HWY (FM 4) & TIN TOP HWY (FM 2580)

ACP ID: 6

ZONE: SHADOW

COUNTY: HOOD



****Traffic Guide should position himself safely.**

Key

- MOVEMENT FACILITATED
- MOVEMENT DISCOURAGED/DIVERTED
- ⊗ TRAFFIC GUIDE
- ⊘ STOP SIGN
- ⊗ TRAFFIC BARRICADE
- 2 PER LANE (LOCAL ROADS AND RAMPS)
- 4 PER LANE (FREEWAY AND RAMPS)
- TRAFFIC SIGNAL
- TRAFFIC CONES SPACED TO DISCOURAGE TRAFFIC BUT ALLOW PASSAGE (3 PER LANE):
- ● ● 8 ft

DESCRIPTION

1. Interdict and Divert eastbound movement along Lipan Highway.

MANPOWER/EQUIPMENT

- 1 Traffic Guide(s)
- 2 Traffic Barricades

LOCATION PRIORITY

- 1

ACP

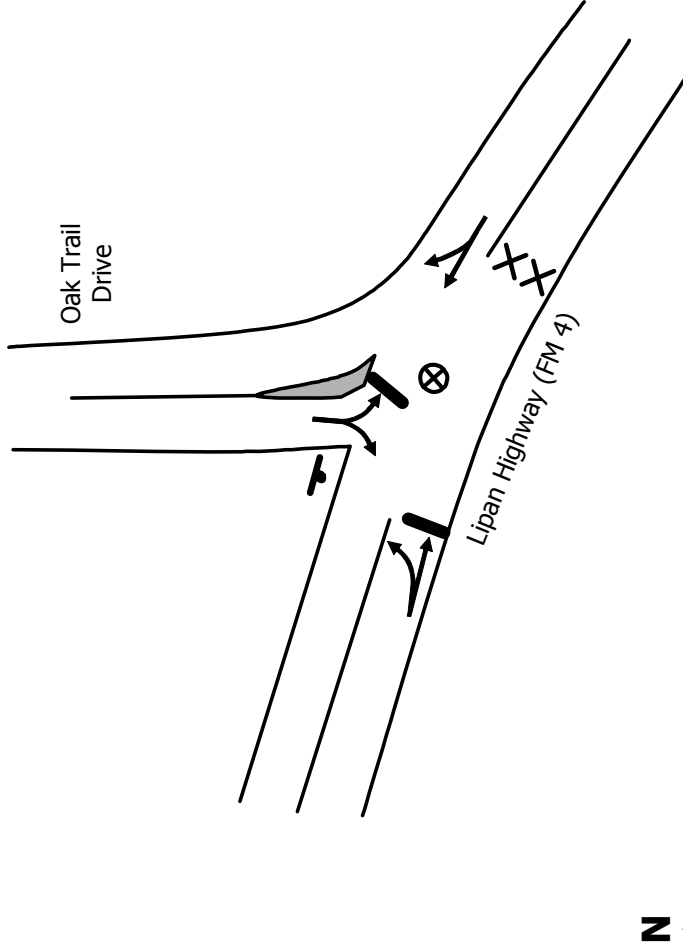
MUNICIPALITY: THORP SPRING

LOCATION: LIPAN HWY (FM 4) & OAK TRAIL DR

ACP ID: 7

ZONE: SHADOW

COUNTY: HOOD



****Traffic Guide should position himself safely.**

Key

- MOVEMENT FACILITATED
- MOVEMENT DISCOURAGED/DIVERTED
- ⊗ TRAFFIC GUIDE
- ⊘ STOP SIGN
- ⊗ TRAFFIC BARRICADE
- 2 PER LANE (LOCAL ROADS AND RAMPS)
- 4 PER LANE (FREEWAY AND RAMPS)
- TRAFFIC SIGNAL
- TRAFFIC CONES SPACED TO DISCOURAGE TRAFFIC BUT ALLOW PASSAGE (3 PER LANE):
- ● ● 8 ft

DESCRIPTION

1. Interdict and Divert eastbound movement along Lipan Highway.

MANPOWER/EQUIPMENT

- 1 Traffic Guide(s)
- 2 Traffic Barricades

LOCATION PRIORITY

- 2

ACP

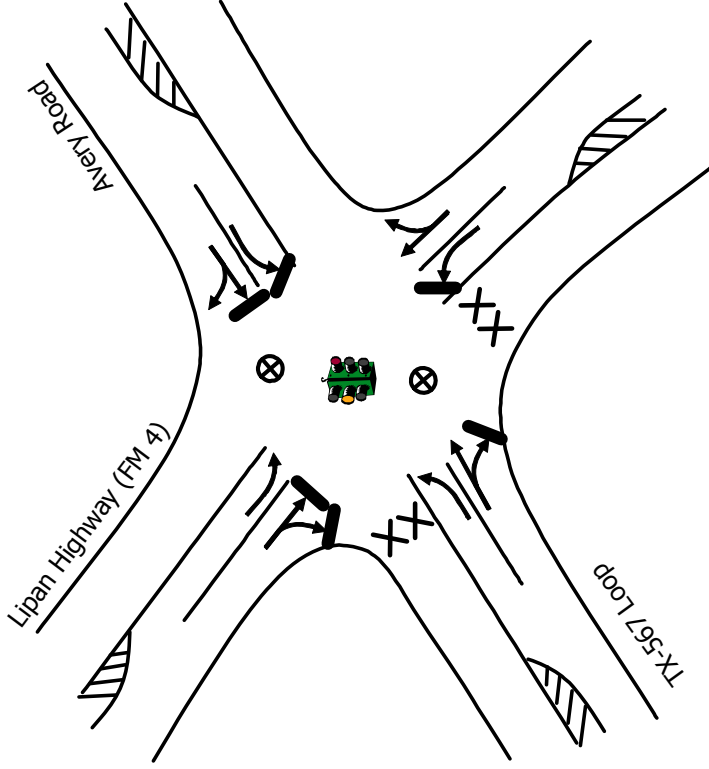
MUNICIPALITY: GRANBURY

LOCATION: LIPAN HWY (FM 4) & AVERY RD

ACP ID: 8

ZONE: SHADOW

COUNTY: HOOD



****Traffic Guide should position himself safely.**

Key

- MOVEMENT FACILITATED
- MOVEMENT DISCOURAGED/DIVERTED
- ⊗ TRAFFIC GUIDE
- ⊘ STOP SIGN
- ⊗ TRAFFIC BARRICADE
- 2 PER LANE (LOCAL ROADS AND RAMPS)
- 4 PER LANE (FREEWAY AND RAMPS)
- TRAFFIC SIGNAL
- TRAFFIC CONES SPACED TO DISCOURAGE TRAFFIC BUT ALLOW PASSAGE (3 PER LANE):
- ● ● 8 ft

DESCRIPTION

1. Interdict and Divert eastbound movement along Lipan Highway.
2. Interdict and Divert westbound movement along TX-567 Loop.

MANPOWER/EQUIPMENT

- 2 Traffic Guide(s)
- 4 Traffic Barricades

LOCATION PRIORITY

- 1

ACP

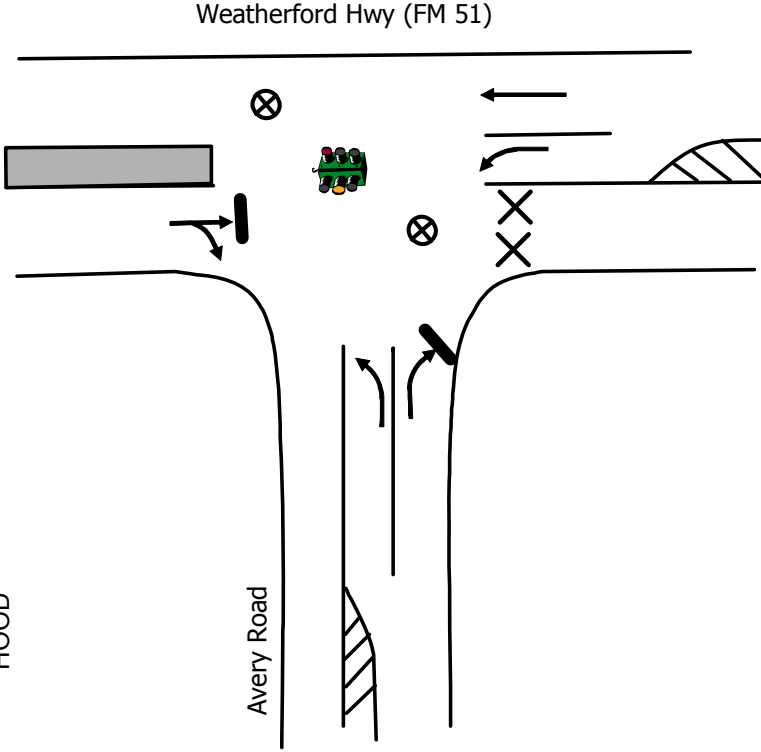
MUNICIPALITY: GRANBURY

LOCATION: WEATHERFORD HWY (FM 51) & AVERY RD

ACP ID: 9

ZONE: SHADOW

COUNTY: HOOD



****Traffic Guide should position himself safely.**

Key

- MOVEMENT FACILITATED
- MOVEMENT DISCOURAGED/DIVERTED
- ⊗ TRAFFIC GUIDE
- ⊘ STOP SIGN
- ⊗ TRAFFIC BARRICADE
- 2 PER LANE (LOCAL ROADS AND RAMPS)
- 4 PER LANE (FREEWAY AND RAMPS)
- TRAFFIC SIGNAL
- TRAFFIC CONES SPACED TO DISCOURAGE TRAFFIC BUT ALLOW PASSAGE (3 PER LANE):

DESCRIPTION

1. Interdict and Divert southbound movement along FM 51.

MANPOWER/EQUIPMENT

- 2 Traffic Guide(s)
- 2 Traffic Barricades

LOCATION PRIORITY

- 1



ACP

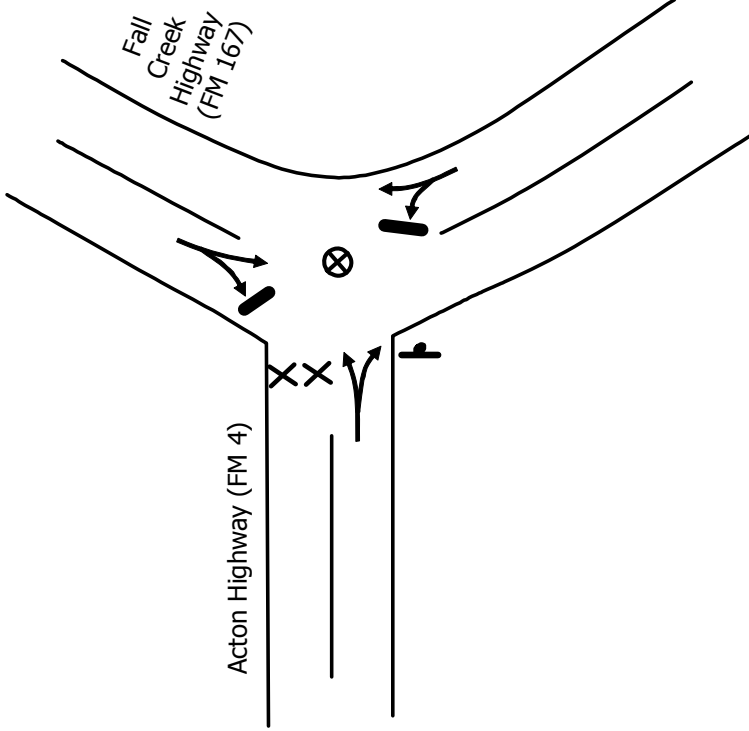
MUNICIPALITY: GRANBURY

LOCATION: FALL CREEK HWY (FM 167) & ACTON HWY

ACP ID: 10

ZONE: SHADOW

COUNTY: HOOD



****Traffic Guide should position himself safely.**

Key

- MOVEMENT FACILITATED
- MOVEMENT DISCOURAGED/DIVERTED
- ⊗ TRAFFIC GUIDE
- ⊘ STOP SIGN
- ⊗ TRAFFIC BARRICADE
- 2 PER LANE (LOCAL ROADS AND RAMPS)
- 4 PER LANE (FREEWAY AND RAMPS)
- TRAFFIC SIGNAL
- TRAFFIC CONES SPACED TO DISCOURAGE TRAFFIC BUT ALLOW PASSAGE (3 PER LANE):

8 ft

DESCRIPTION

1. Interdict and Divert westbound movement along FM 4.
2. Facilitate flow of traffic on Fall Creek Hwy.

MANPOWER/EQUIPMENT

1. Traffic Guide(s)
2. Traffic Barricades

LOCATION PRIORITY

- 1

ACP

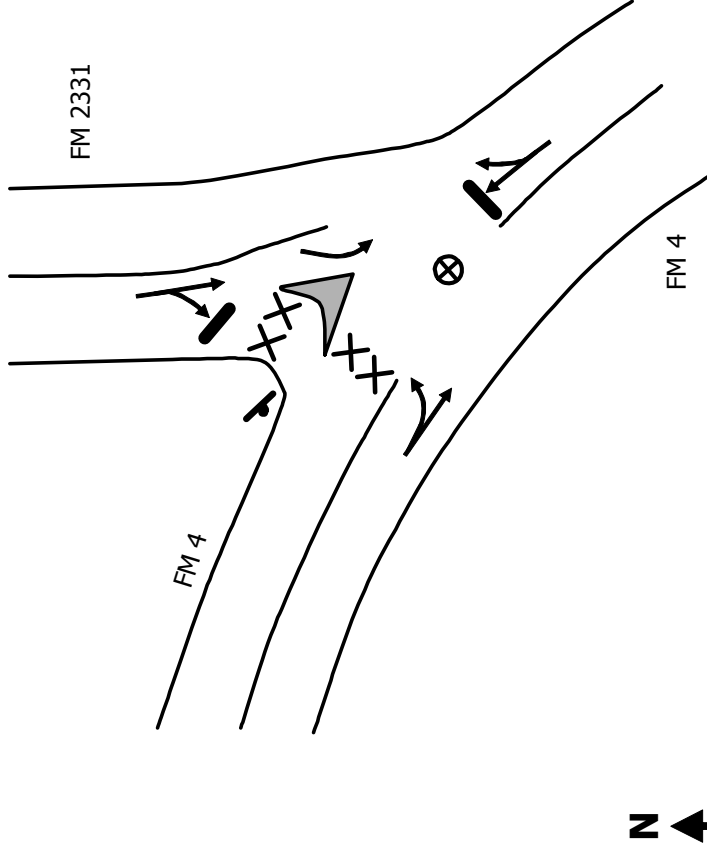
MUNICIPALITY: GODLEY

LOCATION: FM 4 & FM 2331

ACP ID: 11

ZONE: SHADOW

COUNTY: JOHNSON



****Traffic Guide should position himself safely.**

- Key
- MOVEMENT FACILITATED
 - MOVEMENT DISCOURAGED/DIVERTED
 - ⊗ TRAFFIC GUIDE
 - ⊘ STOP SIGN
 - ⊗ TRAFFIC BARRICADE
 - 2 PER LANE (LOCAL ROADS AND RAMPS)
 - 4 PER LANE (FREEWAY AND RAMPS)
 - TRAFFIC SIGNAL
 - TRAFFIC CONES SPACED TO DISCOURAGE TRAFFIC BUT ALLOW PASSAGE (3 PER LANE):
 - ● ● 8 ft

DESCRIPTION

1. Interdict and Divert westbound movement along FM 4.

MANPOWER/EQUIPMENT

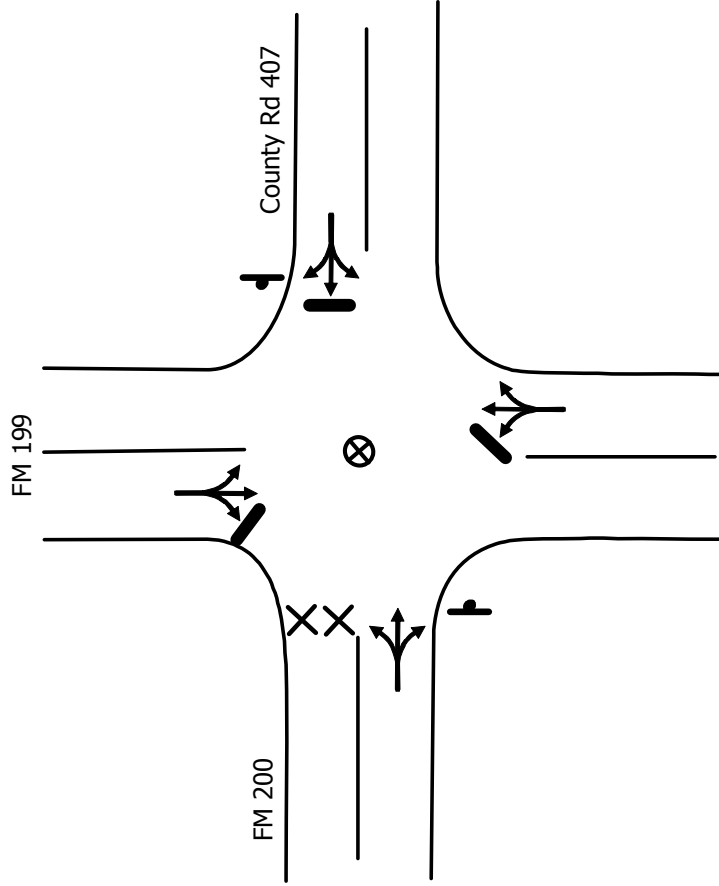
- 1 Traffic Guide(s)
- 4 Traffic Barricades

LOCATION PRIORITY

- 2

ACP

MUNICIPALITY: NEMO
LOCATION: FM 199 & FM 200
ACP ID: 12
ZONE: 2H
COUNTY: SOMERVELL



****Traffic Guide should position himself safely.**

Key

- MOVEMENT FACILITATED
- MOVEMENT DISCOURAGED/DIVERTED
- ⊗ TRAFFIC GUIDE
- ⊙ STOP SIGN
- ⊗ TRAFFIC BARRICADE
- 2 PER LANE (LOCAL ROADS AND RAMPS)
- 4 PER LANE (FREEWAY AND RAMPS)
- TRAFFIC SIGNAL
- TRAFFIC CONES SPACED TO DISCOURAGE TRAFFIC BUT ALLOW PASSAGE (3 PER LANE):
- ● ● 8 ft

DESCRIPTION

1. Interdict and Divert westbound traffic along FM 200.

MANPOWER/EQUIPMENT

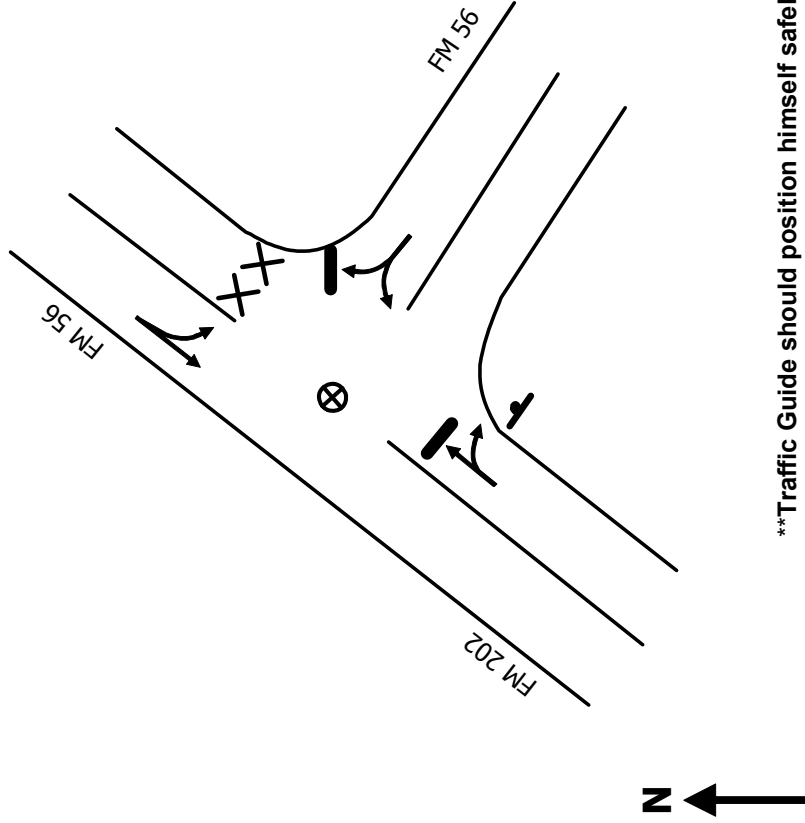
- 1 Traffic Guide(s)
- 2 Traffic Barricades

LOCATION PRIORITY

- 3

ACP

MUNICIPALITY: GLEN ROSE
LOCATION: FM 202 & FM 56
ACP ID: 13
ZONE: 2J
COUNTY: SOMERVELL



****Traffic Guide should position himself safely.**

Key

- MOVEMENT FACILITATED
- MOVEMENT DISCOURAGED/DIVERTED
- ⊗ TRAFFIC GUIDE
- ⊘ STOP SIGN
- ⊗ TRAFFIC BARRICADE
- 2 PER LANE (LOCAL ROADS AND RAMPS)
- 4 PER LANE (FREEWAY AND RAMPS)
- TRAFFIC SIGNAL
- TRAFFIC CONES SPACED TO DISCOURAGE TRAFFIC BUT ALLOW PASSAGE (3 PER LANE):

DESCRIPTION

1. Interdict and Divert northbound movement along FM 56.

MANPOWER/EQUIPMENT

- 1 Traffic Guide(s)
- 2 Traffic Barricades

LOCATION PRIORITY

- 3

ACP

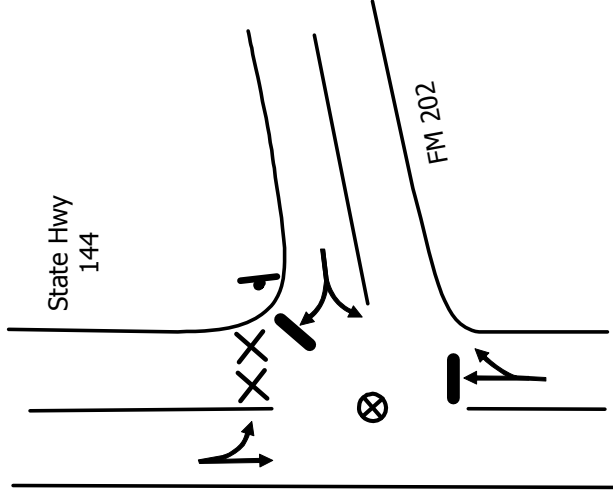
MUNICIPALITY: GLEN ROSE

LOCATION: STATE HWY 144 & FM 202

ACP ID: 14

ZONE: 2J

COUNTY: SOMERVELL



Key

- MOVEMENT FACILITATED
- MOVEMENT DISCOURAGED/DIVERTED
- ⊗ TRAFFIC GUIDE
- ⊘ STOP SIGN
- ⊗ TRAFFIC BARRICADE
- 2 PER LANE (LOCAL ROADS AND RAMPS)
- 4 PER LANE (FREEWAY AND RAMPS)
- TRAFFIC SIGNAL
- TRAFFIC CONES SPACED TO DISCOURAGE TRAFFIC BUT ALLOW PASSAGE (3 PER LANE):
- ● ● 8 ft

DESCRIPTION

1. Interdict and Divert northbound movement along State Hwy 144.

MANPOWER/EQUIPMENT

- 1 Traffic Guide(s)
- 2 Traffic Barricades

LOCATION PRIORITY

- 2

****Traffic Guide should position himself safely.**

ACP

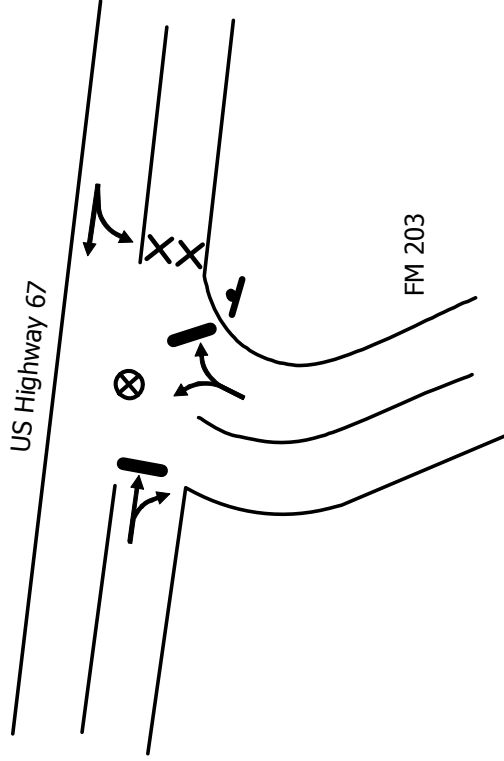
MUNICIPALITY: GLASS

LOCATION: US HWY 67 & FM 203

ACP ID: 15

ZONE: 3F

COUNTY: SOMERVELL



****Traffic Guide should position himself safely.**

Key

- MOVEMENT FACILITATED
- MOVEMENT DISCOURAGED/DIVERTED
- ⊗ TRAFFIC GUIDE
- ⊘ STOP SIGN
- ⊗ TRAFFIC BARRICADE
- 2 PER LANE (LOCAL ROADS AND RAMPS)
- 4 PER LANE (FREEWAY AND RAMPS)
- TRAFFIC SIGNAL
- TRAFFIC CONES SPACED TO DISCOURAGE TRAFFIC BUT ALLOW PASSAGE (3 PER LANE):

2 ft

3 ft

8 ft

DESCRIPTION

1. Interdict and Divert eastbound movement along US Hwy 67.

MANPOWER/EQUIPMENT

- 1 Traffic Guide(s)
- 2 Traffic Barricades

LOCATION PRIORITY

- 2

ACP

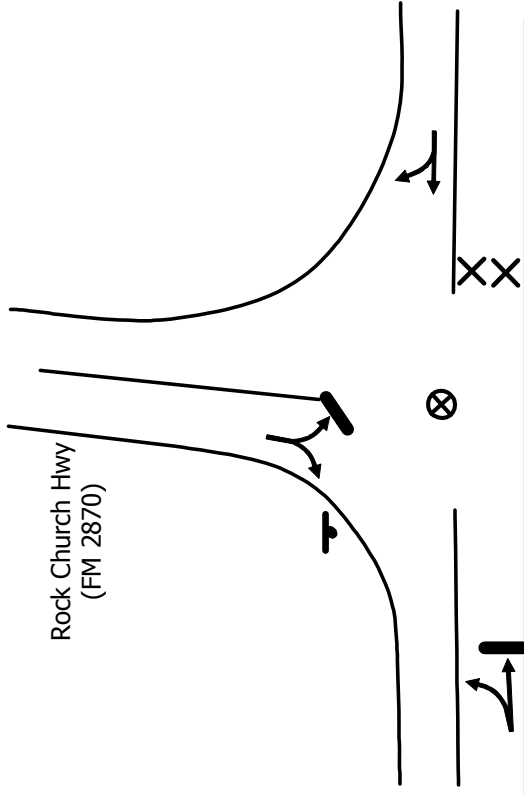
MUNICIPALITY: STEPHENVILLE

LOCATION: FM 205 & FM 2870

ACP ID: 16

ZONE: SHADOW

COUNTY: ERATH



Chalk Mountain Hwy (FM 205)

****Traffic Guide should position himself safely.**

- Key
- MOVEMENT FACILITATED
 - | MOVEMENT DISCOURAGED/DIVERTED
 - ⊗ TRAFFIC GUIDE
 - ⊘ STOP SIGN
 - ⊗ TRAFFIC BARRICADE
 - 2 PER LANE (LOCAL ROADS AND RAMPS)
 - 4 PER LANE (FREEWAY AND RAMPS)
 - TRAFFIC SIGNAL
 - TRAFFIC CONES SPACED TO DISCOURAGE TRAFFIC BUT ALLOW PASSAGE (3 PER LANE):
 - ● ● 8 ft

DESCRIPTION

1. Interdict and Divert eastbound movement along FM 205

MANPOWER/EQUIPMENT

- 1 Traffic Guide(s)
- 2 Traffic Barricades

LOCATION PRIORITY

- 3