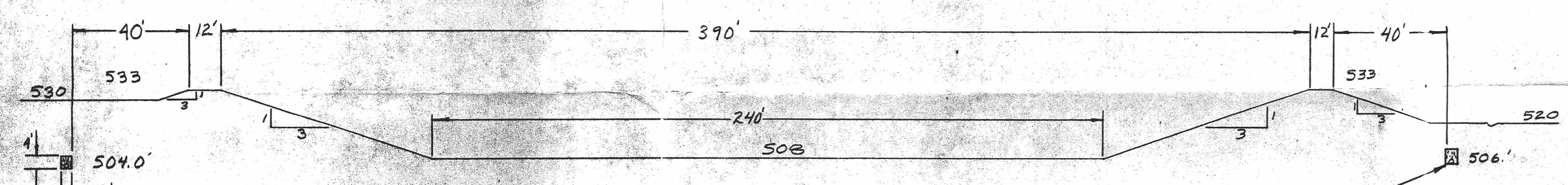
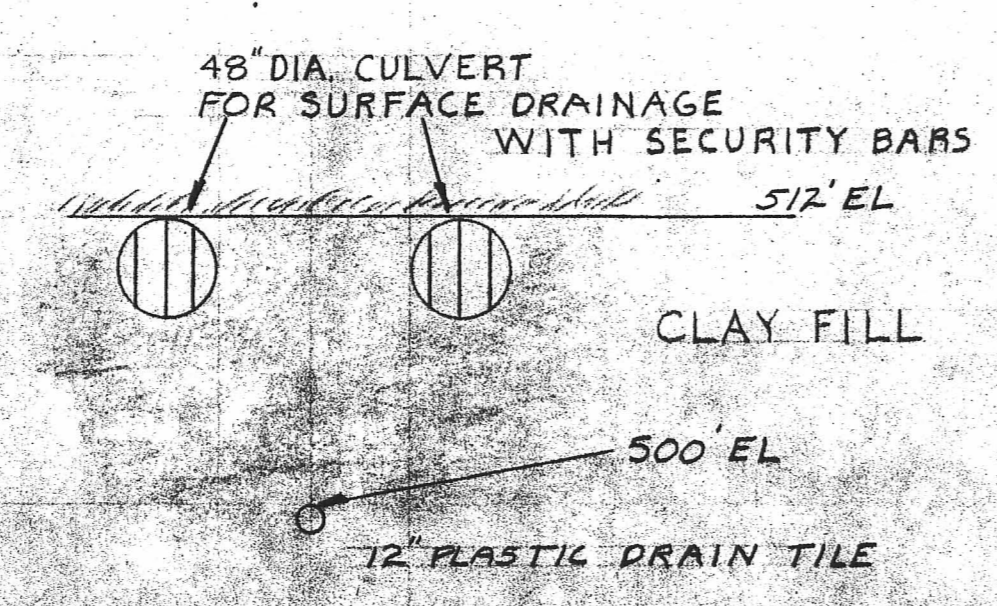


SECTION B-B



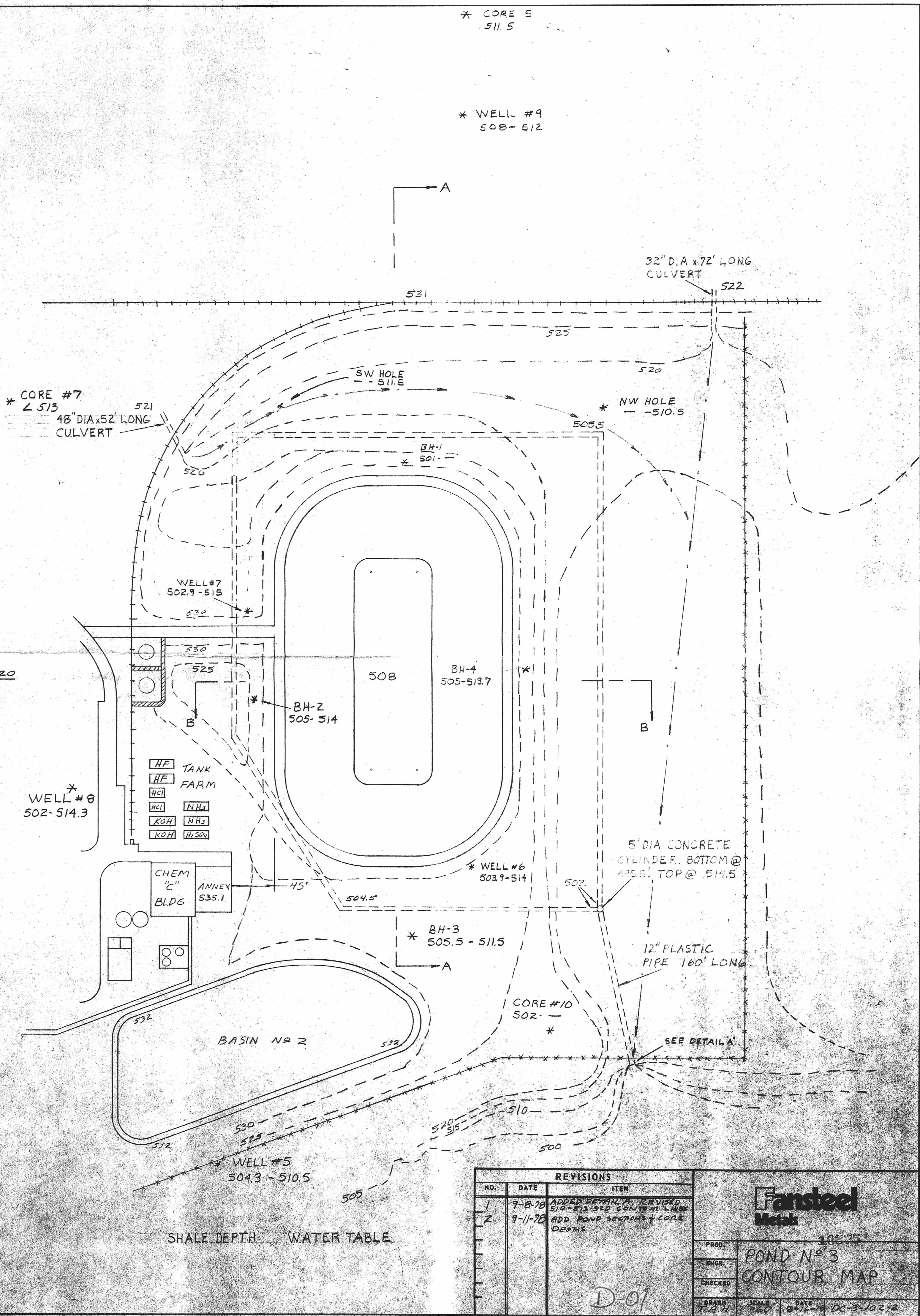
SECTION A-A

SCALE; 1"=30'



DETAIL "A"

6" PERFORATED CORRUGATED GALVANIZED METAL PIPE, COVERED WITH STONE, AND FELT COVERING



\* CORE 5  
511.5

\* WELL #9  
508-512

\* CORE #7  
48" DIA x 52' LONG  
CULVERT

\* NW HOLE  
-510.5

\* WELL #8  
502-514.3

\* WELL #6  
502.9-514

\* BH-3  
505.5-511.5

\* WELL #5  
504.3-510.5

REVISIONS		
NO.	DATE	ITEM
1	9-8-78	ADDED DETAIL A, REVISED 510-513.520 CONTOUR LINES
2	9-11-78	ADD PUMP SECTIONS & CORE DRAINS

**Fansteel Metals**

PROD. BY: J. H. H.

ENGR. BY: J. H. H.

CHECKED: J. H. H.

DRAWN: J. H. H.

SCALE: 1"=30'

DATE: 8-16-78

DC-3-102-2

**POND N° 3  
CONTOUR MAP**

D-01